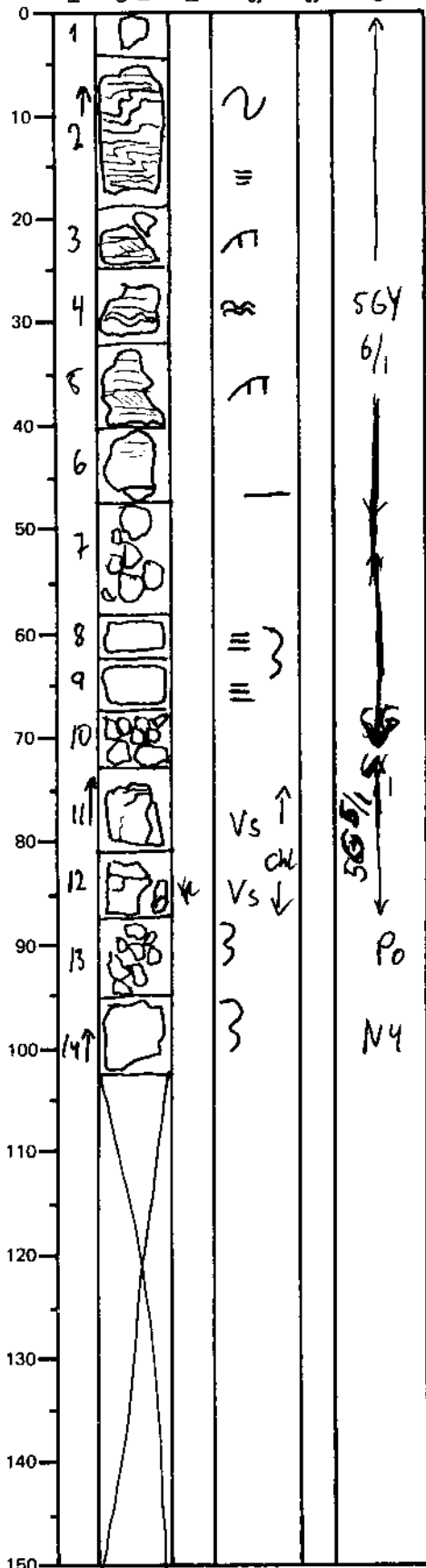


| LEG      | SUB | SITE  | HOLE | CORE | TYPE | SEC |
|----------|-----|-------|------|------|------|-----|
| 169      |     | 1035H |      | 11R  |      | 1   |
| OBSERVER |     |       |      |      |      |     |
| BJE      |     |       |      |      |      |     |

ODP  
VISUAL CORE DESCRIPTION

SEDIMENTS / SEDIMENTARY ROCKS

SECTION DESCRIPTION



Summary:  
 Upperpart (0-46cm) is fine to medium grained sandstone, with local slump-folding and cross bedding. Some parallel and wavy lamination. Color SGY 6/1 - greenish gray. Sharp contact to silty claystone at 46 cm.  
 47-73 cm is siltstone, parallel-laminated with abundant chondrites.  
 73-87 cm. is greenish gray (SG 5/1) weakly laminated siltstone with 1-2 mm thin veins of pyrrhotite. Green color probably due to chlorite alteration. About 10% pyrrhotite.  
 87-103 cm - Gray (N4/-) heavily bioturbated siltstone. Weak pyrrhotite-in-pregnation (~5%) in piece 13.