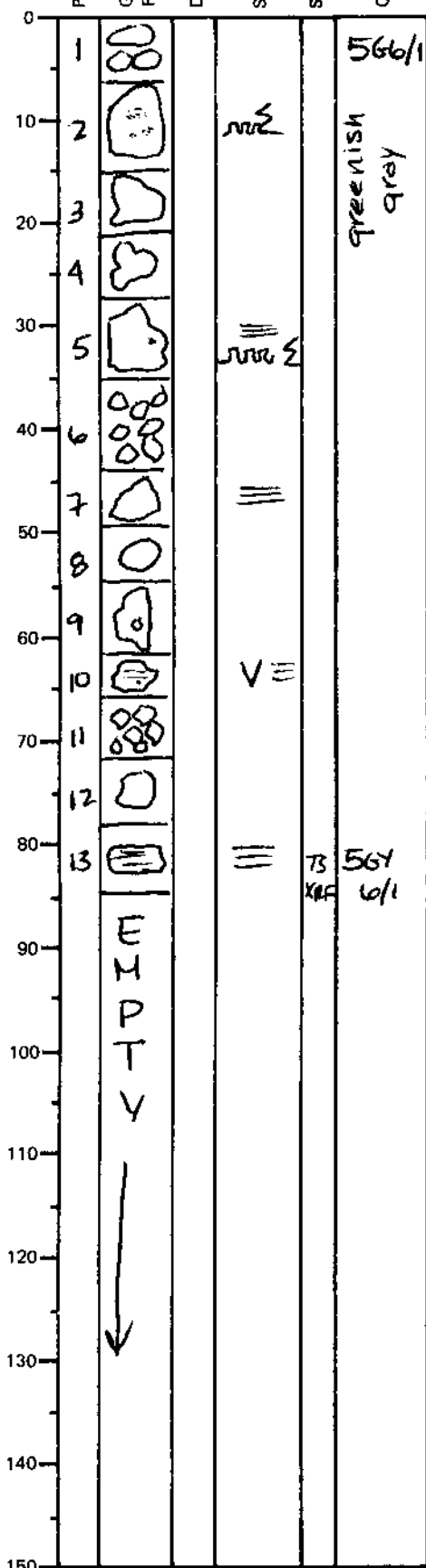


| | | | | | | |
|----------|-----|-------|------|------|------|-----|
| LEG | SUB | SITE | HOLE | CORE | TYPE | SEC |
| 169 | | 1035H | | 1 | 2 | RO1 |
| OBSERVER | | | | | | |
| MAR | | | | | | |

ODP
VISUAL CORE DESCRIPTION

SEDIMENTS / SEDIMENTARY ROCKS

SECTION DESCRIPTION



1. - Fine sandstone
 2. - Fine sandstone w/ qtz vugs
 3. - Fine sandstone minor qb vugs
 4. "
 5. fine sandstone vug filled w/ Pb Coy soft sed deformation
- Entire section fine sandstone

9. vug filled w/ clay min + qtz
10. prehnite veins < 1mm (?)

Color pale green epidote likely

Summary:

Fine grained sandstone locally bioturbated. Parallel laminations occur in pieces 5, 7, 10 & 13. Ball and pillow soft sediment deformation in piece 5. Distinct greenish color indicates the probable presence of epidote in bottom of section. < 2% Sulfate