

# SULFIDE VISUAL CORE DESCRIPTION

169- 1035H-22E-01  
SITE/HOLE/CORE/SECTION

BARREL SHEET SUMMARY:

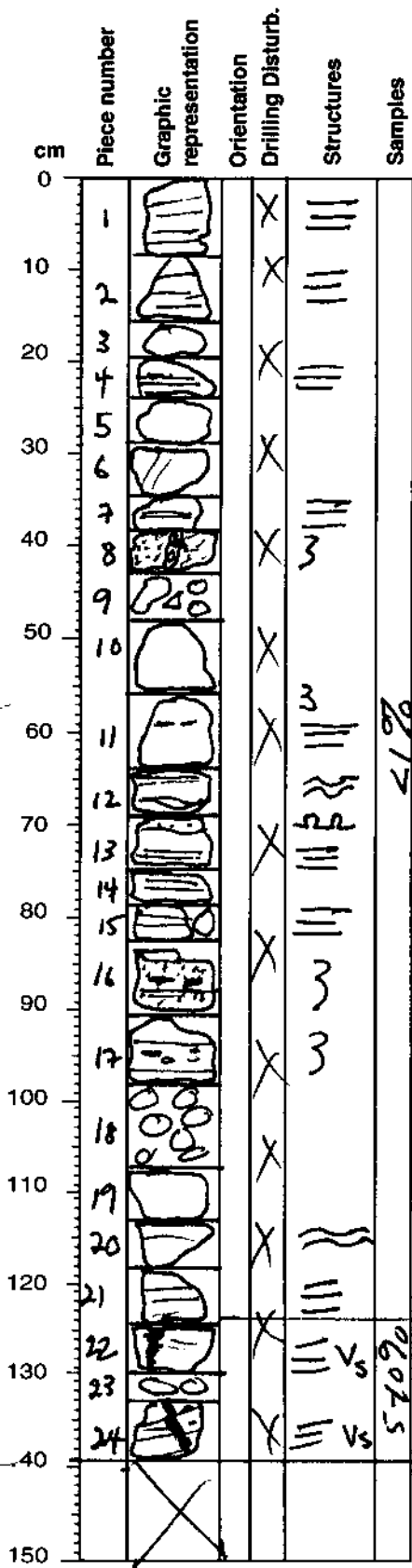
Observer: WRG

lith name Turbiditic Siltstone, Sandstone, mudstone;  
Minor Cu-Fe sulfide veins

Major Lithology:

Hydrothermally altered siltstone, sandstone + mudstone with voids lined by quartz crystals, and incipient silicification.

Minor: Sulfide veined Sediment



Bluish gray (5B6/1) interbedded silty claystone, silt<sup>stone</sup> and parallel-/cross-laminated sandstone with ~1% disseminated sulfides except for pieces 22-24 which are cut by Cu-Fe-sulfide veins. Incipient silicification along worm burrows and other areas of presumably higher porosity/permeability. Some sample (e.g. piece 14, 13) have rectangular voids lined with quartz crystals. Silicification has a dark gray (N5) colour.

Greenish gray (5G4/1) parallel-laminated siltstone cut by veins of Cu-Fe-Sulfides that also partly follow bedding planes. Silicification selvages at sulfide veins.

