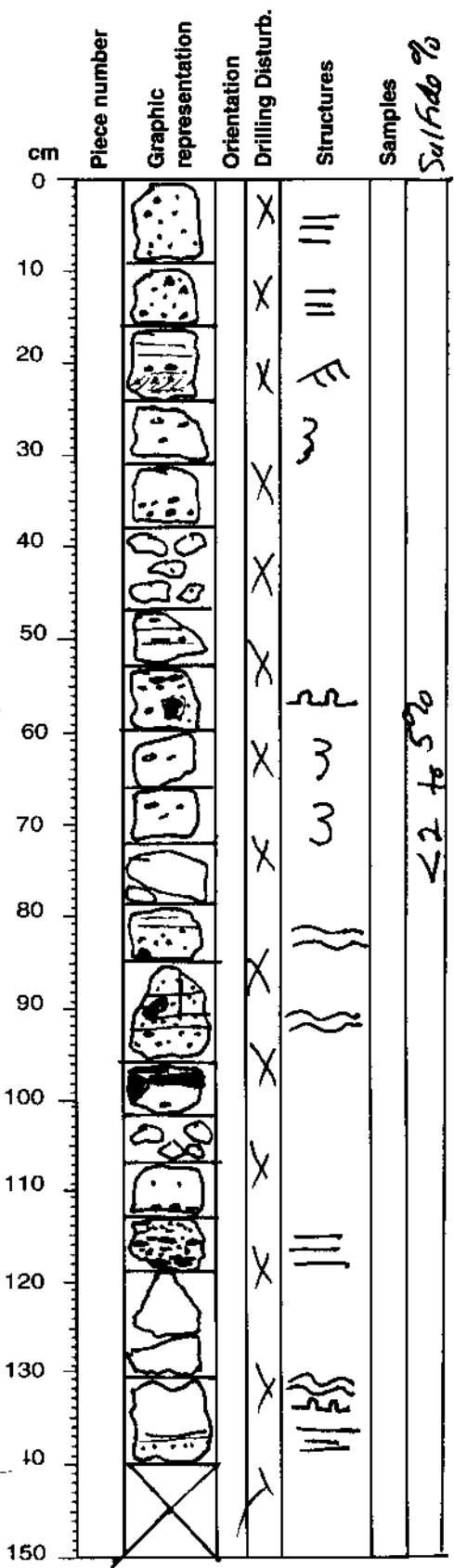


SULFIDE VISUAL CORE DESCRIPTION

169-10354-24R-01
SITE/HOLE/CORE/SECTION

24R-01

BARREL SHEET SUMMARY: Observer: WDC
 weakly + locally
 lith name Silicified interbedded turbiditic siltstone, Sandstone and hemipelagic mudstone
 Major Lithology:
 - Turbiditic siltstone and sandstone
 - Hemipelagic mudstone
 Minor Lithology:
 - silicified with blebs/disseminations of Cu-Fe-sulfides



(5647/1)
 Light greenish gray siltstone and sandstone interbedded with pale gray (N6) mudstone and containing disseminated and bleby Cu-Fe-sulfides. Sandstone is cross-laminated in places and the mudstone is commonly bioturbated. Disseminated/bleby Cu-Fe-sulfide commonly have medium gray silicified halos that are very narrow (< 1 mm). This interval is also characterized by voids (rectangular) that are lined by euhedral quartz. The sulfide content is highly variable but on average for the core < 2%. Piece 11 contains Cu-Fe-sulfide filling in porosity within a soft-sediment deformed silty/sandy bed (Sulfides = 20%)