

SULFIDE VISUAL CORE DESCRIPTION

169- 1035H-25R-01
SITE/HOLE/CORE/SECTION

25R-01

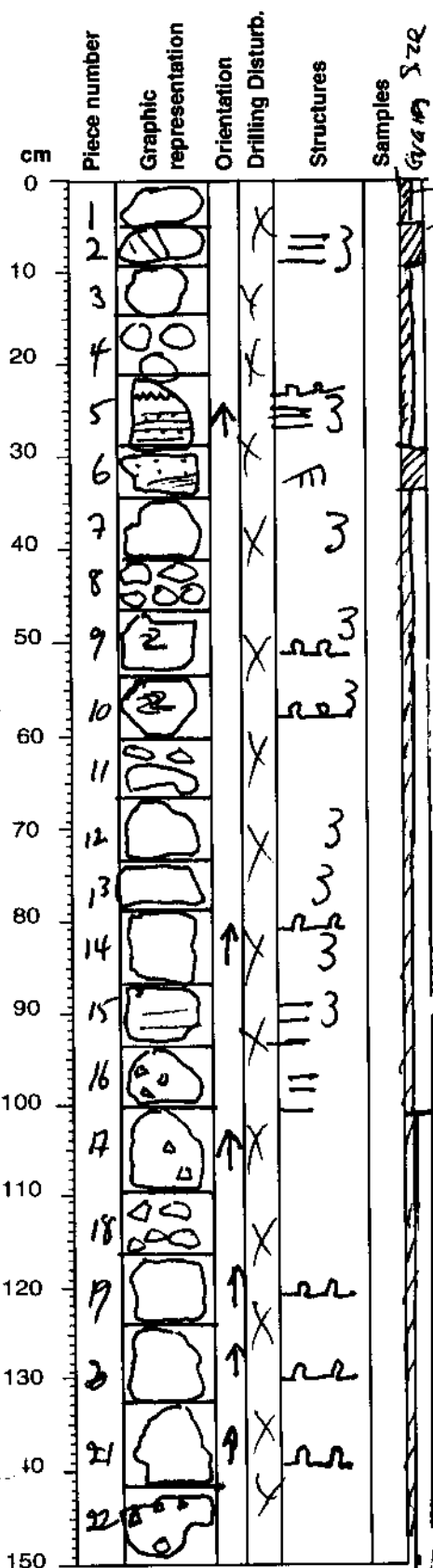
BARREL SHEET SUMMARY:

Observer: LEP

lith name Interbedded siltstone, ^{Fine} sandstone + mudstone

Major Lithology:

Greenish gray siltstone + fine sandstone
Gray mudstone



ss. siltstone
Greenish gray (56Y 6/1) siltstone and Fine Sandstone, locally parallel-laminated, interbedded with gray (M6) bioturbated mudstone. Greenish colour may be due to hydrothermal alteration to chlorite. Siltstones are highly disturbed in places by soft-sediment deformation and bioturbation. Molds of what was probably anhydrite occur in Pieces 16, 17 and 22. Sulfides are rare, <1%.