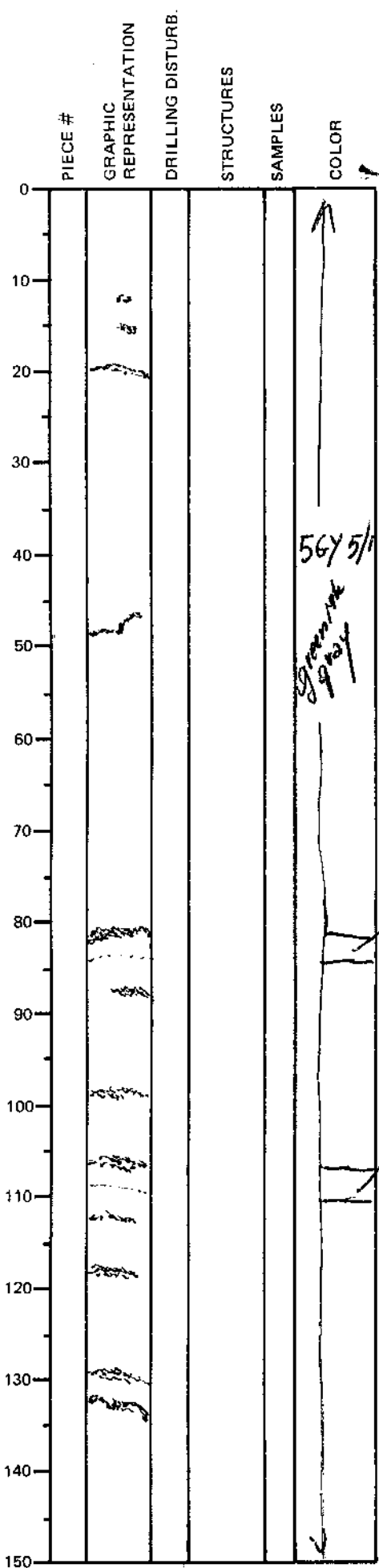


LEG	SUB	SITE	HOLE	CORE	TYPE	SEC
169		1036A		01H06		
OBSERVER						
GZ						

ODP
VISUAL CORE DESCRIPTION

SEDIMENTS / SEDIMENTARY ROCKS

SECTION DESCRIPTION



from 0 to 150 cm
 Homogeneous SILTY CLAY
 containing several thin (2-5 mm)
 silt beds and lenses.
 silt beds are made up of quartz, feldspars
 and heavy minerals (transparent); well
 sorted

Two intervals (80-85 and 107-111) appear
 a 5y 5/2 color: possible hemipelagic beds?

no induration
 no alteration
 no mineralisation.

DESCRIPTION FOR BS

MUD with very thin interbedded
 layers of silt (silt)