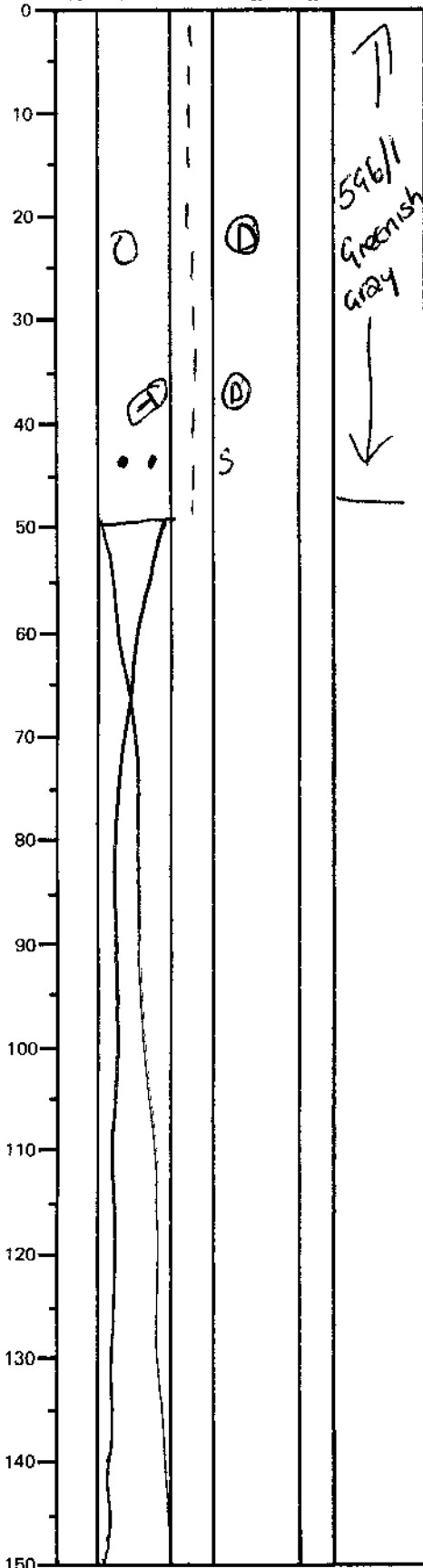


LEG	SUB	SITE	HOLE	CORE	TYPE	SEC
169		1036	A	01	1107	
OBSERVER						ZAF/DNC

ODP
VISUAL CORE DESCRIPTION

SEDIMENTS / SEDIMENTARY ROCKS

SECTION DESCRIPTION



0-49cm: homogeneous clay

24cm: concretion 1.5cm across → ~~burrow~~ dolomitic

37cm ~~2.2~~ 2cm across concretion → burrow dolomitic

NB: mud is bluish greenish gray: slightly diff to other sections of this core — may reflect some alteration?

no obvious induration

sulfidic "clast" at 45cm = clst of unconsolidated

Fe oxides + a wee bit of pyrite

BARREL SHEET SUMMARY
MUD with 2 dolomitised burrows + has a slightly blue tinge