

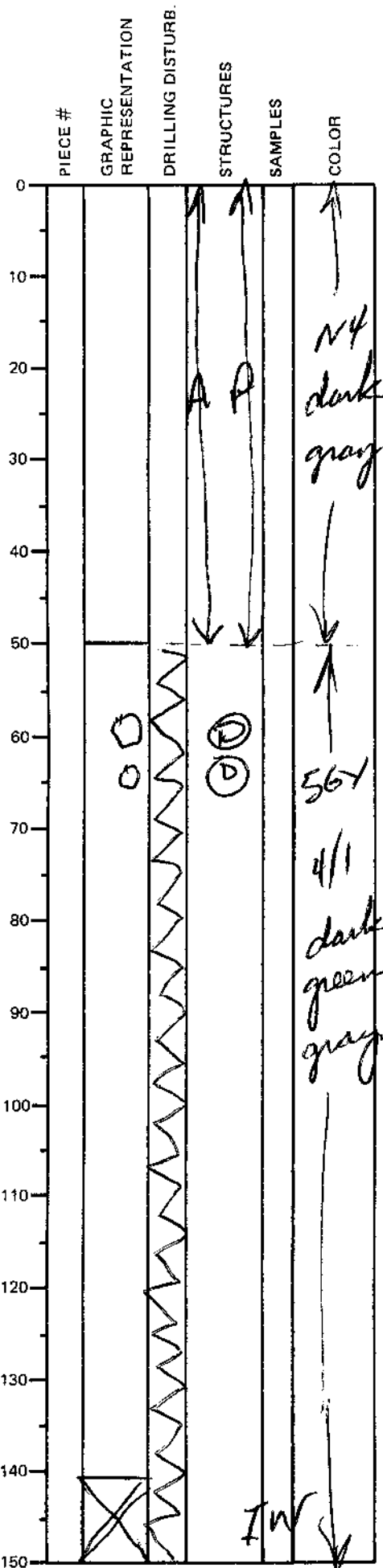
LEG	SUB	SITE	HOLE	CORE	TYPE	SEC
169		1036A		02H02		

ODP
VISUAL CORE DESCRIPTION

SEDIMENTS / SEDIMENTARY ROCKS

OBSERVER
ZVF/PST

SECTION DESCRIPTION



0-50 cm: homogeneous
SILTY CLAY same as section 01 above.

50 to 150 cm: MUD CLAST BRECCIA
dark greenish gray, angular mud clasts
up to 1 cm; moderately sorted, clay
matrix (scarce); clasts slightly indurated.

several 1-3 cm white dolomite
modules between 57 and 66 cm.

BARREL SHEET:

top: MVD

bottom: SEDIMENTARY BRECCIA