

LEG	SUB	SITE	HOLE	CORE	TYPE	SEC
169		1036A		3H		4

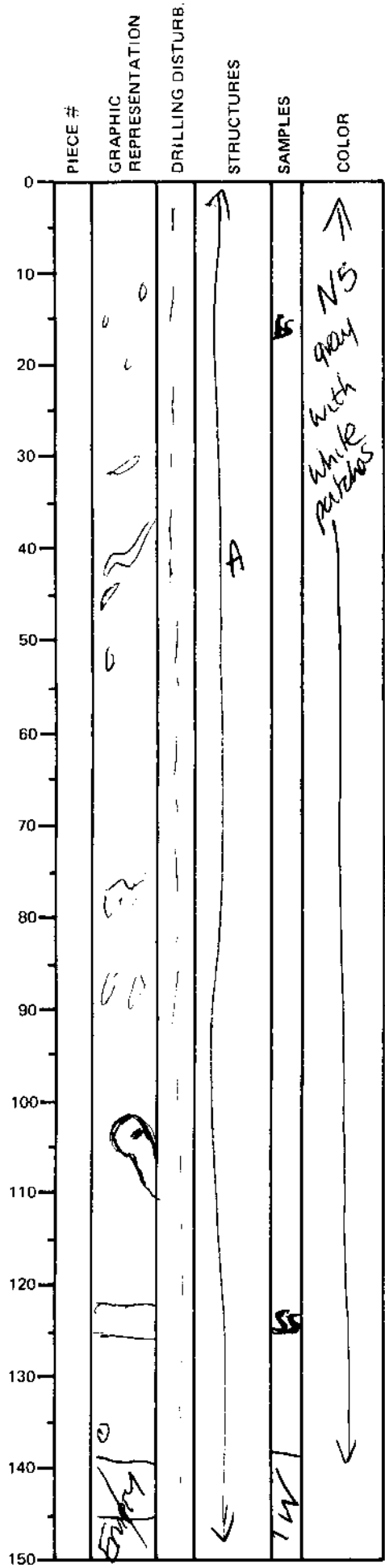
ODP
VISUAL CORE DESCRIPTION

SEDIMENTS / SEDIMENTARY ROCKS

SECTION DESCRIPTION

OBSERVER

DNC et al.



Silty clay 0 - 140cm with abundant (5-7%) anhydrite disseminations + clusters of crystals. also some gypsumification of anhydrite (hydro-anhydrite).

105-110cm: bulbous secondary oxidation area with brown waxy selvage ~0.5mm thick. Central brown area is anhydrite nodule - alt A around this nodule

anhydrite
↓
gypsum
↓
clay

122-125cm: gypsum layer (possibly after anhydrite) pale gray color.

(also at 111-113cm)