

LEG	SUB	SITE	HOLE	CORE	TYPE	SEC
169		1036	B	01	H	05

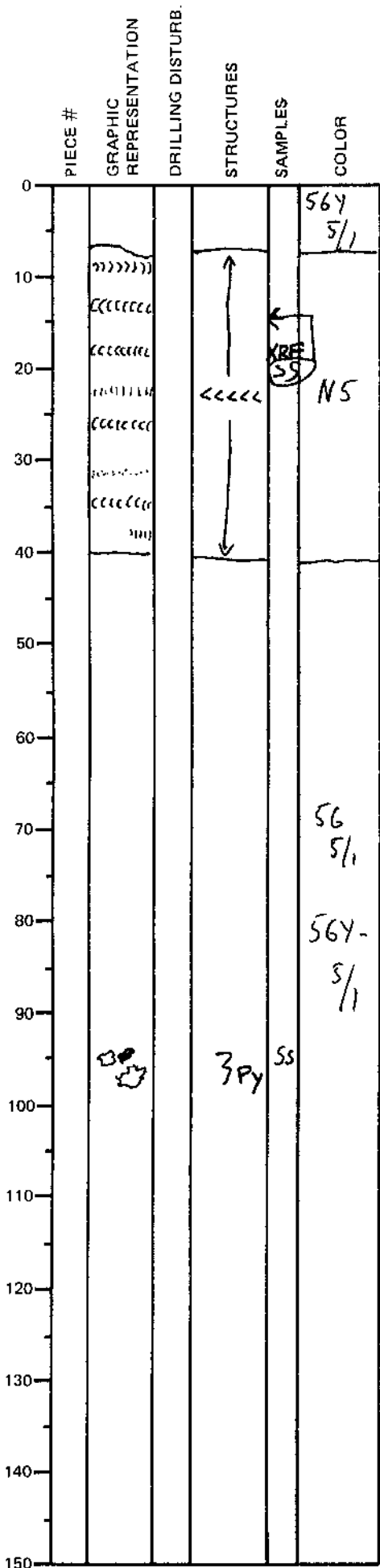
ODP
VISUAL CORE DESCRIPTION

SEDIMENTS / SEDIMENTARY ROCKS

OBSERVER

SECTION DESCRIPTION

BJE



SILTY CLAY throughout the section.

Abundant zoophycus between 7 and 40 cm.

Color: N5 - Gray in the zoophycus layer and 5G-5/1 - gray to 56Y-5/1 - greenish gray elsewhere, subtle color variations.

Sediments are non-indurated to weakly indurated

silt blebs w/ pyrite