

LEG	SUB	SITE	HOLE	CORE	TYPE	SEC
169		1036B			3H04	

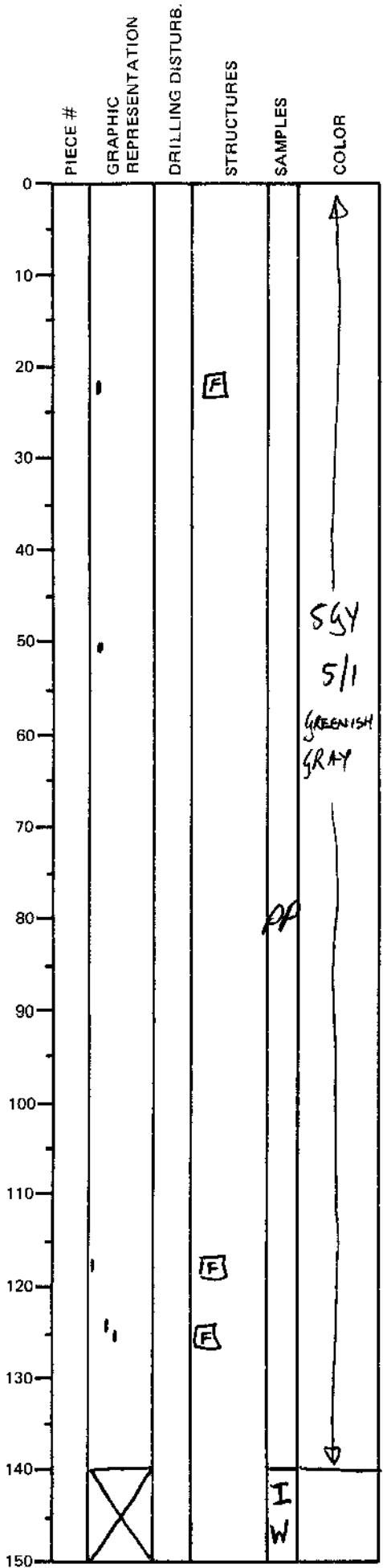
ODP
VISUAL CORE DESCRIPTION

SEDIMENTS / SEDIMENTARY ROCKS

SECTION DESCRIPTION

OBSERVER

ZUF/TEA



HOMOGENOUS SILTY CLAY
MINOR
WITH DISSEMINATED ANHYDRITE (<<1%)
AS CLUSTERS & GRAINS

4 FOSSIL SERPULID WORM
(5-8mm LONG)
TUBES AT INTS 23cm, 117cm, & 122cm.

(NO FOSSIL SYMBOL)

PROPOSE [F] - BUT of course
open for discussion & change

NON-INDURATED

BARREL SHEET

HOMOGENOUS MUD WITH
RARE SERPULID WORM TUBE
FOSSILS