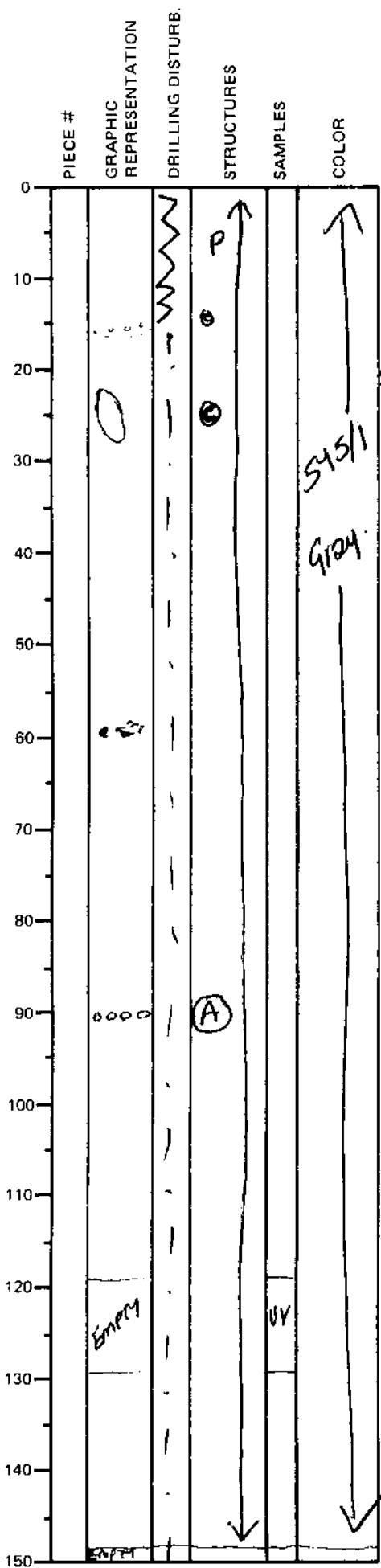


LEG	SUB	SITE	HOLE	CORE	TYPE	SEC
169		1036B			HX	1
OBSERVER						
DUC						TEA

ODP
VISUAL CORE DESCRIPTION

SEDIMENTS / SEDIMENTARY ROCKS

SECTION DESCRIPTION



SILTY CLAY 0 - 149 cm.

large caliche nodule (4 cm) at ~25 cm.
(concretion)

58-60 cm: slightly more indurated
? mud clasts.

90-93 cm: layer of subrounded
anhydrite concretions 1-8 mm
in diameter.

disseminated pyrite - less than 1%
v. minor → negligible, ^{disseminated} anhydrite ≪≪ 1%

non indurated, non altered

BARREL SHEET SUMMARY
Mud with caliche concretions
+ disseminated pyrite
+ anhydrite concretions