

LEG	SUB	SITE	HOLE	CORE	TYPE	SEC
169		1036B		06A01		

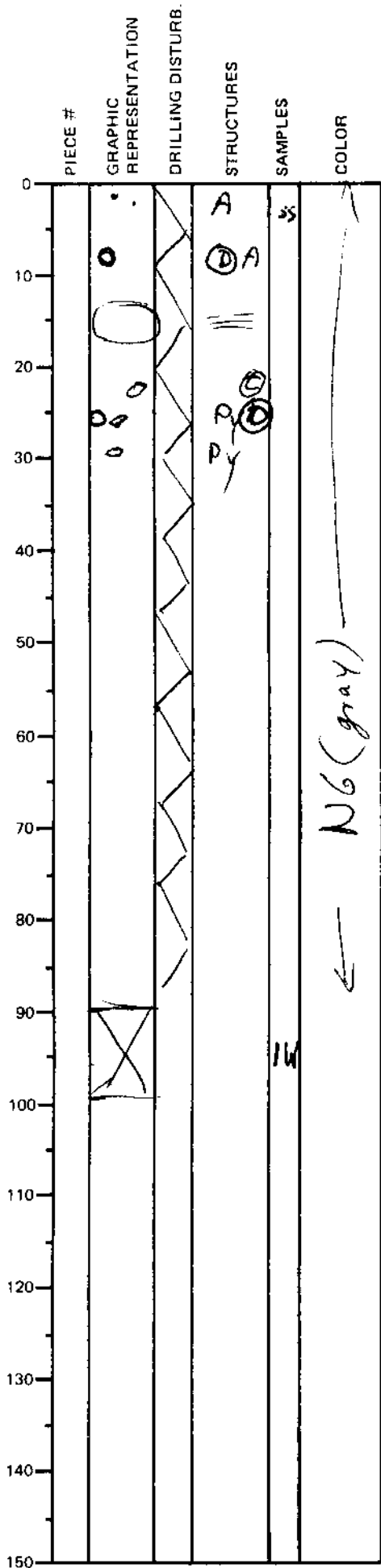
ODP  
VISUAL CORE DESCRIPTION

SEDIMENTS / SEDIMENTARY ROCKS

SECTION DESCRIPTION

OBSERVER

LAC/PET



0 - 90cm Silty Clay, slightly indurated  
 13-16cm well-indurated silt bed  
 26-29cm trace pyrite as several 0.5-1cm euhedral crystals  
 at 8cm: 1.5cm diameter nodular dolomite nodule with anhydrite core  
 at 25cm: 1cm diameter calcite nodule

Barrel Sheet  
 mud with minor dolomite and calcite nodules