

LEG	SUB	SITE	HOLE	CORE	TYPE	SEC
169		1036C		44		2

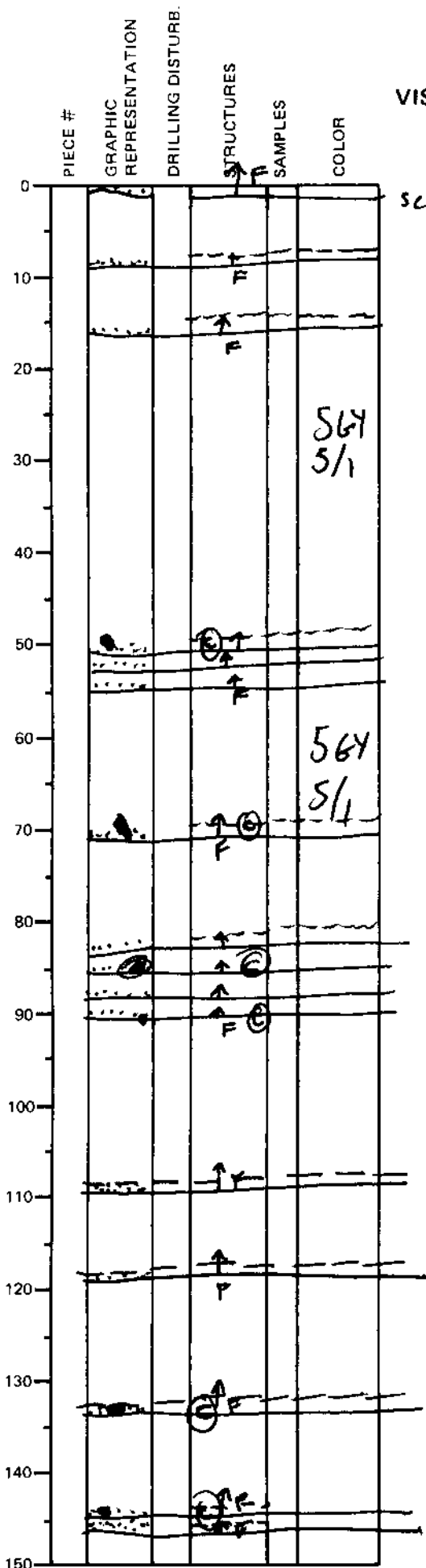
ODP
VISUAL CORE DESCRIPTION

SEDIMENTS / SEDIMENTARY ROCKS

OBSERVER

SECTION DESCRIPTION

PAB



scored basal
contact of
large turbidite

greenish gray (56Y 5/1)

nearly homogeneous silty clay
with v. fine sand laminae

abundant calcite nodules

the calcite nodules/cements
preferentially occur in sands

non indurated except in sands

Sands are "salt and pepper"
color, approximately
(56Y 4/1) dark greenish gray