

LEG	SUB	SITE	HOLE	CORE	TYPE	SEC
169		1036	C	05	X	04

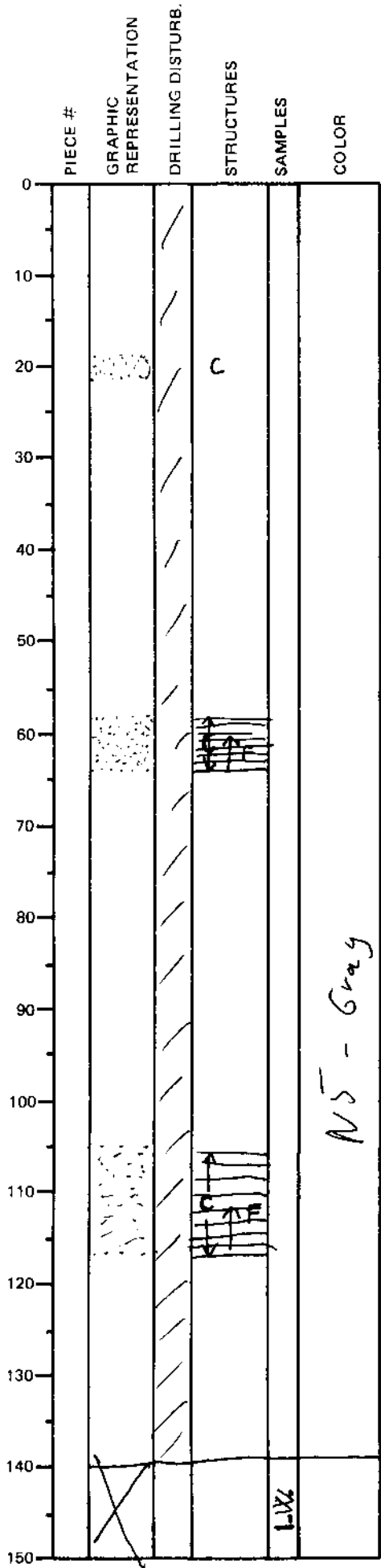
ODP  
VISUAL CORE DESCRIPTION

SEDIMENTS / SEDIMENTARY ROCKS

OBSERVER

SECTION DESCRIPTION

BJE



Summary: Gray (NS/) silty clay with minor sandbeds. The sandbeds show fining upward sequences and planar laminae, and are rich in calcite.

Weakly indurated clay and moderately (calcite-semented) sand.