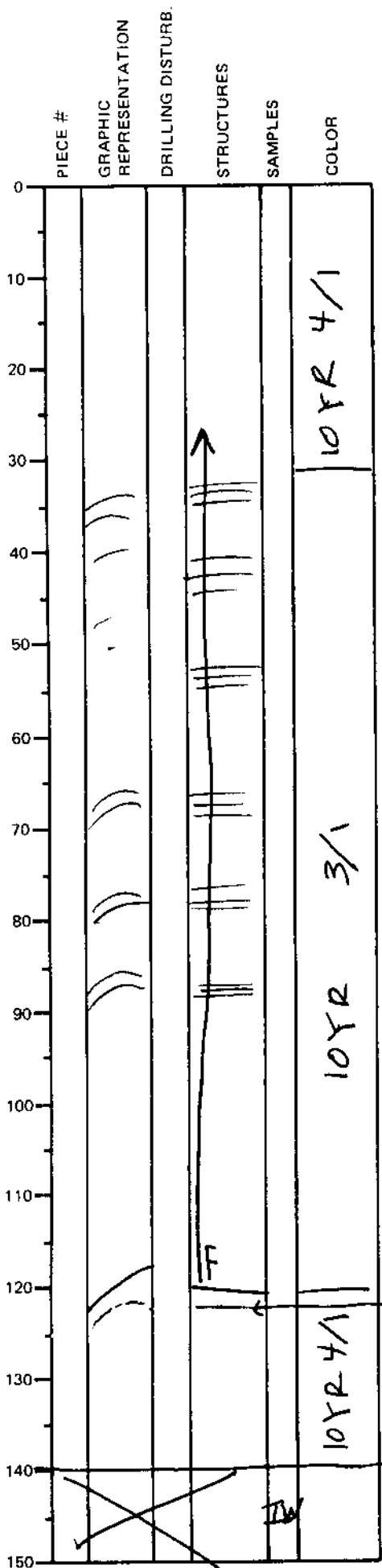


LEG	SUB	SITE	HOLE	CORE	TYPE	SEC
109		1037B	02	102		
SEDIMENTS / SEDIMENTARY ROCKS						OBSERVER
SECTION DESCRIPTION						CAR

ODP  
VISUAL CORE DESCRIPTION

SEDIMENTS / SEDIMENTARY ROCKS

SECTION DESCRIPTION



Major Lithologies:

Dark greenish gray (10YR 4/1) CLAY  
and Very dark greenish gray  
SILT.

0-32 cm: dark greenish gray CLAY;  
homogeneous & unconsolidated

32-120 cm: very dark greenish  
gray <sup>sandy</sup> SILT turbidite w/ very  
sharp base; fines upward over  
the interval; becomes parallel  
laminated (SILT + silty clay)  
in the upper 2/3rds

120-140: dark greenish gray CLAY,  
as at 0-32 cm, with one  
pale green lamina at 123 cm.

pale green lamina (5G 6/2)

65% SILT + SAND