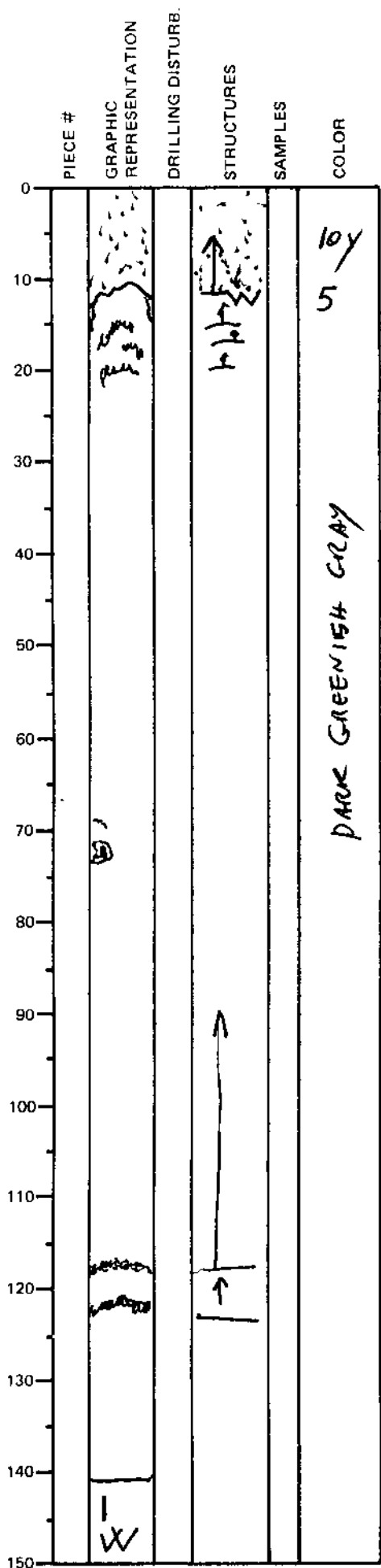


LEG	SUB	SITE	HOLE	CORE	TYPE	SEC
169		1037B		06	H05	
						OBSERVER
						G2

ODP
VISUAL CORE DESCRIPTION

SEDIMENTS / SEDIMENTARY ROCKS

SECTION DESCRIPTION



15% SAND + SILT

0-10 cm medium to fine grained
SAND

Base of turbidite bed: scoured
(but some drilling disturbance is
present)

10-140 cm CLAY

At 118 and 122 two black strips
of silty clay sulfide rich a
percent which can be interpreted
as bases of ~~the~~ clay turbidite
beds - MAGN. SUSCEPTIBILITY confirm
the presence of Fe magnetic
mineral in the dark layers

Other 2 or 3 black holes are present
at 20-18-13 cm (3 small turbidite
beds!)

(M. susceptibility at 10 increases)