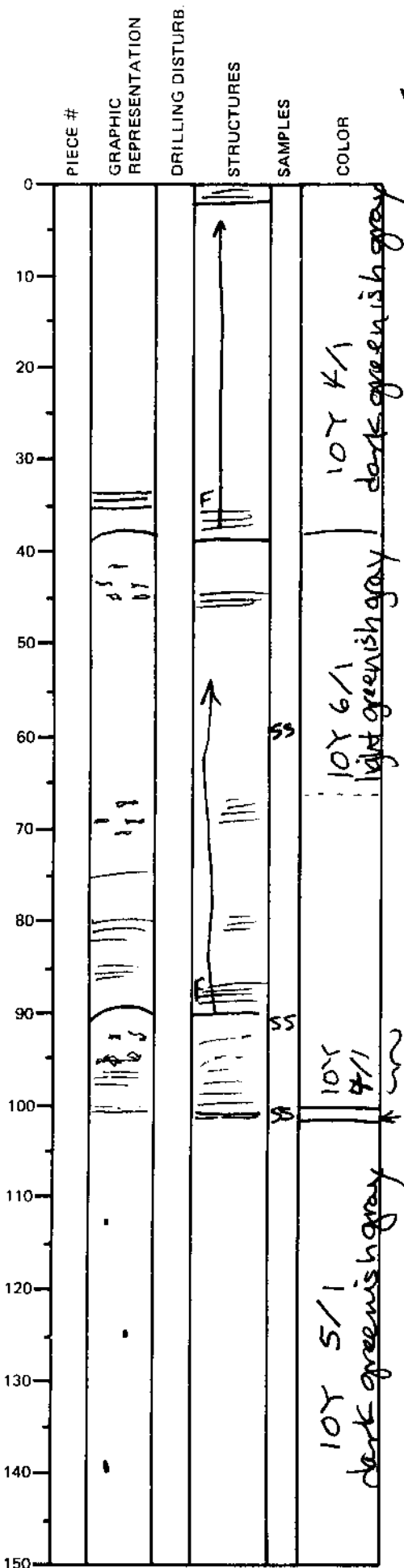


LEG	SUB	SITE	HOLE	CORE	TYPE	SEC
169		1037B		14H01		

ODP VISUAL CORE DESCRIPTION	OBSERVER
SEDIMENTS / SEDIMENTARY ROCKS	CAR
SECTION DESCRIPTION	



0-2 VERY FINE SAND + SILT

2-38 VERY FINE SAND & SILT
 turbidite; fining-upward;
 parallel laminated at the base;
 fines up to SILTY CLAY & then
 CLAY.

90-38 VERY FINE SAND (basal 3cm)
 fining upward to SILT → SILTY CLAY →
 and finally CLAY; parallel laminated
 throughout; color change (becomes
 lighter) at 62 cm = change to clay;
 Black (2.5YR) mottled, discontinuous
 laminations in top 1/2 of interval.
 → soft, charcoal-like,
 Fe-sulfide (possibly greigite)

90-103 pale green lamina
 overlain by CLAY
 w/ mottled (discontinuous)
 organic material (v. fine
 grained).

103-150 homogeneous dark greenish gray
 (10Y 5/1) CLAY. Small blebs
 of black (2.5YR)
 Fe-mono-sulfide
 is present

~29% SAND + SILT