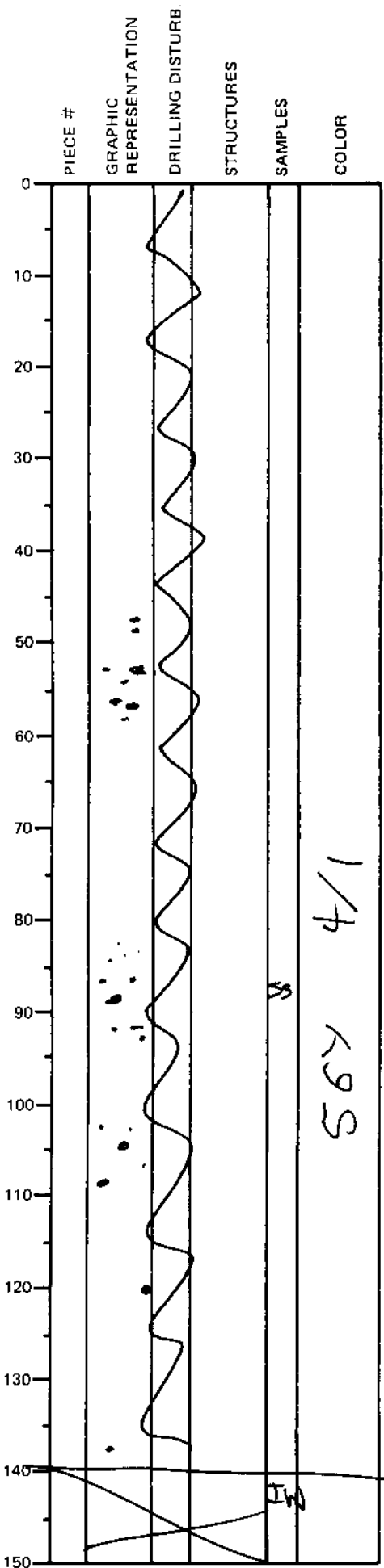


LEG	SUB	SITE	HOLE	CORE	TYPE	SEC
169		1037B		35X04		
OBSERVER				CAR		

ODP  
VISUAL CORE DESCRIPTION

SEDIMENTS / SEDIMENTARY ROCKS

SECTION DESCRIPTION



Dark greenish gray (5 or 4/1),  
moderately indurated,  
calcareous SILTY  
CLAYSTONE with  
small (up to 1cm in diameter)  
blebs (mostly round) of  
Black (N 2.5) Fe monosulfide  
(greigite?).

0% SILT + SAND

IN