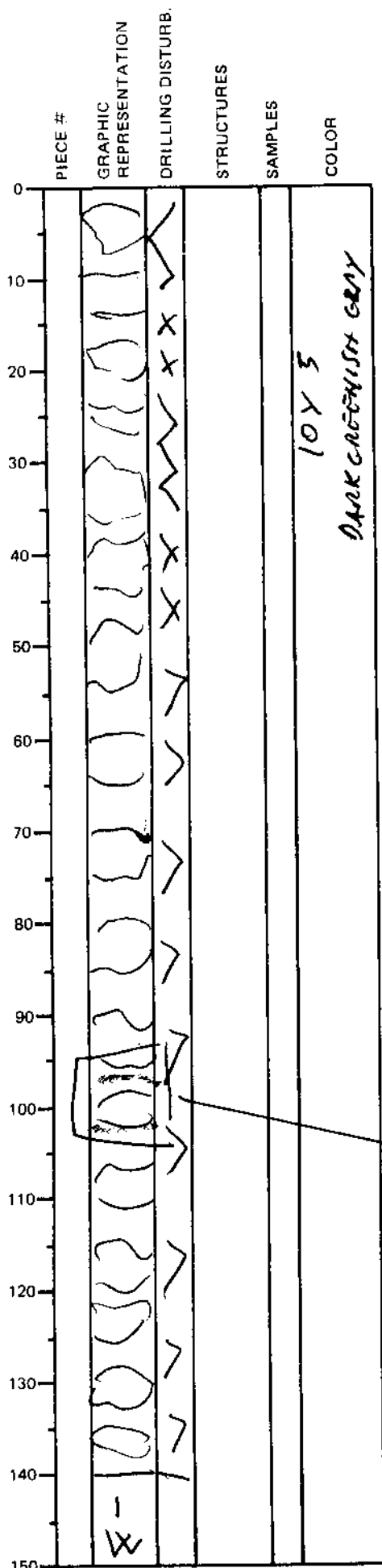


LEG	SUB	SITE	HOLE	CORE	TYPE	SEC
169		1038	B	38	X04	
OBSERVER						G2

ODP  
VISUAL CORE DESCRIPTION

SEDIMENTS / SEDIMENTARY ROCKS

SECTION DESCRIPTION

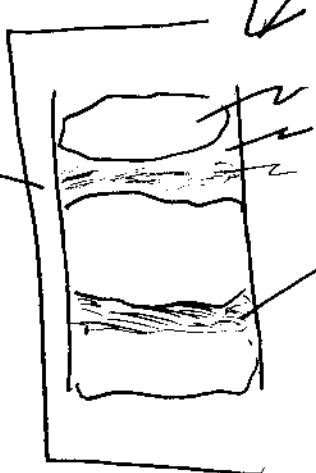


0% SAND + SILT

Slightly indurated  
spaced biscuits of  
structureless calcareous (see former  
sections) CLAYSTONE

between biscuits, 2-15 mm  
bands of blackish clays are present.  
the interpretation is that they  
are artifacts of drilling which  
concentrates soil fines dissimulated  
among biscuits

AND NOT  
A PRIMARY  
DEPOSITIONAL  
FEATURE



biscuit 10Y 5  
gray NS clay  
blackish band