

| LEG      | SUB | SITE  | HOLE | CORE  | TYPE | SEC |
|----------|-----|-------|------|-------|------|-----|
| 169      |     | 1037B |      | 39X06 |      |     |
| OBSERVER |     |       |      |       |      |     |
| GZ       |     |       |      |       |      |     |

ODP  
VISUAL CORE DESCRIPTION

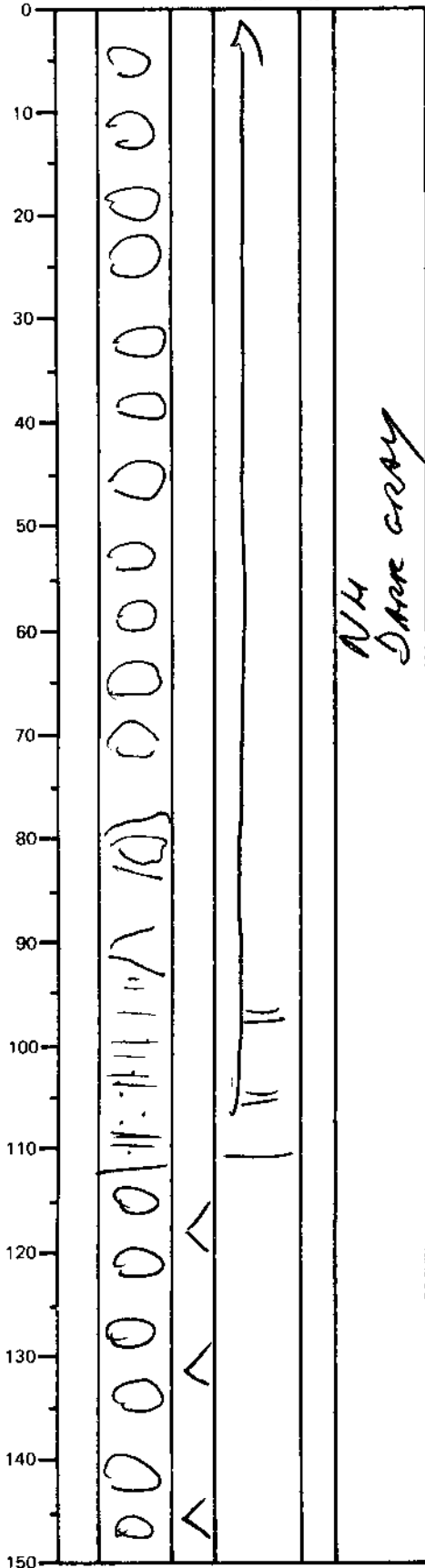
SEDIMENTS / SEDIMENTARY ROCKS

SECTION DESCRIPTION

10% SILT + SANDS

From 0 to 112  
SILT turbidite fining upward to  
SILTY CLAY and CLAYSTONE

2cm. Lithology SILTY CLAYSTONE



From 112  
↓  
To  
150

biscuits of  
homogeneous slightly indurated  
claystone