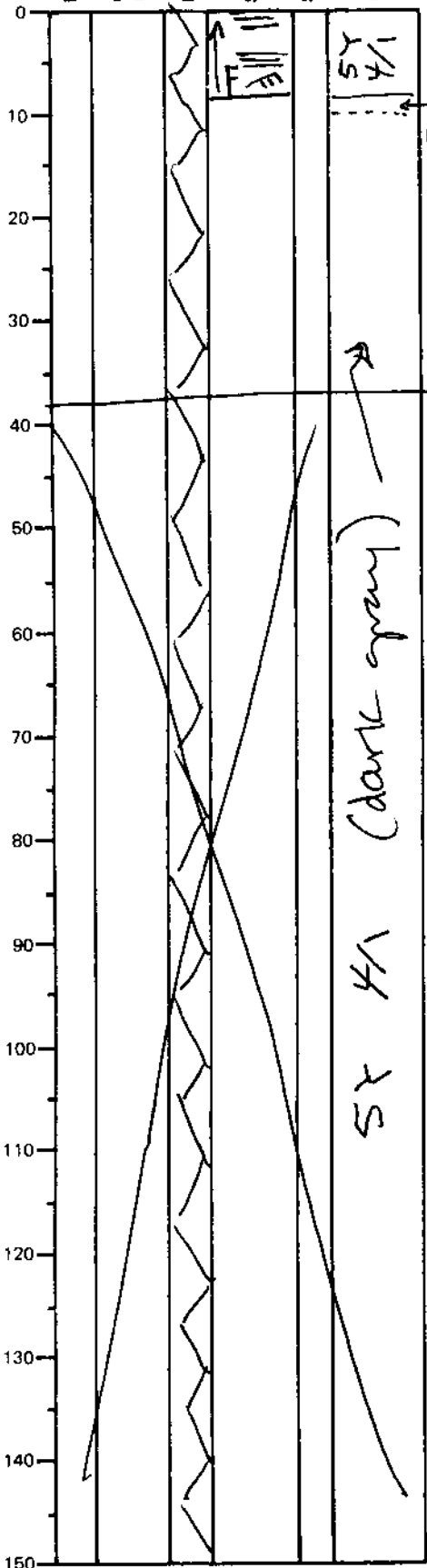


LEG	SUB	SITE	HOLE	CORE	TYPE	SEC
169	1037A			49	X07	
ODP VISUAL CORE DESCRIPTION						OBSERVER
SEDIMENTS / SEDIMENTARY ROCKS						CAR
SECTION DESCRIPTION						



ODP VISUAL CORE DESCRIPTION

SEDIMENTS / SEDIMENTARY ROCKS

SECTION DESCRIPTION

OBSERVER

CAR

0-9 cm: SILTSTONE, cross-? parallel-laminated. This is the base of the turbidite that ~~begin~~ has its "top" in section 6. Calcareous.

9-36 cm: SILTY CLAYSTONE, mostly massive but faintly laminated in the upper few cm. Also, the upper 2 cm (9-11) are a slighter ~~the~~ browner color (very dark grayish brown, 10Y 3/2) than the surrounding lithologies and the upper 1/2 cm of this brown interval has small (sub-mm) "pits" in it. Calcareous

~ 7% SILT + SAND