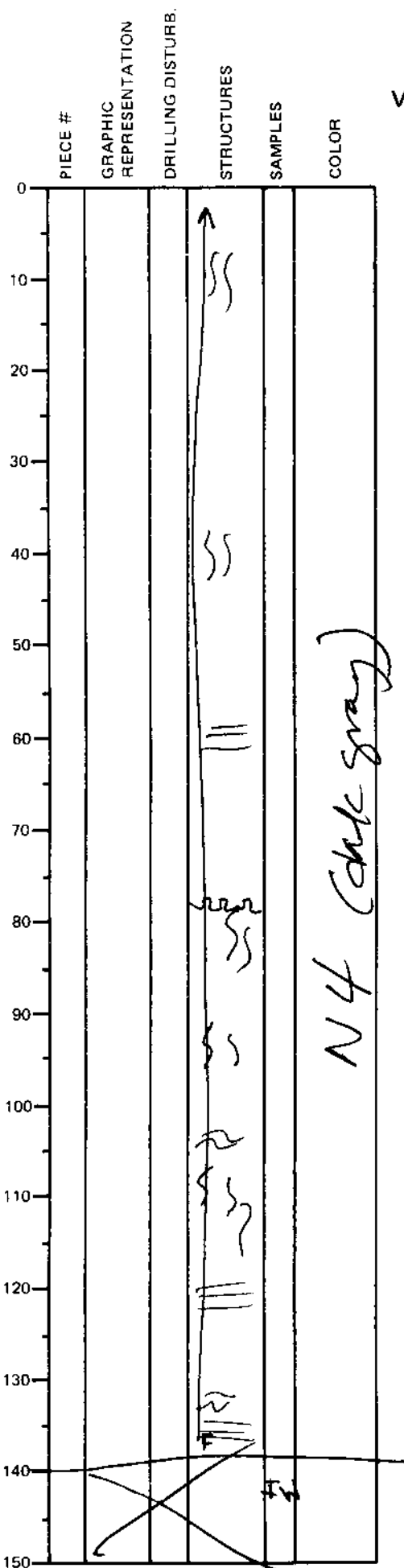


LEG	SUB	SITE	FLOW	CORE	TYPE	SEC
169		1037B		52	X04	
OBSERVER						
CAR						

ODP  
VISUAL CORE DESCRIPTION

SEDIMENTS / SEDIMENTARY ROCKS

SECTION DESCRIPTION



SILTY CLAYSTONE,  
very calcareous,  
dark gray (N4);

parallel to wavy laminated  
& intensely bioturbated;  
local soft sediment  
deformation (all of these  
structures are more  
common down-section).

this section is  
slightly siltier than  
the previous section

0% SILT + SAND