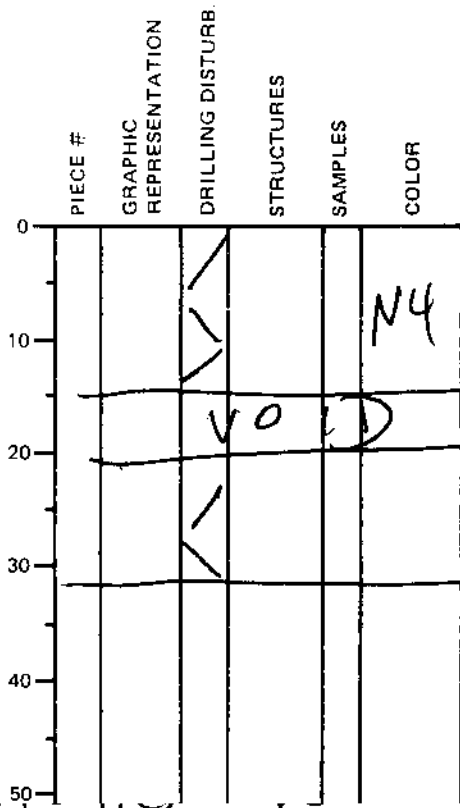


LEG	SUB	SITE	FLOW	CORE	TYPE	SEC
169	1037B			SSXCC		
				OBSERVER		
				PAB		

ODP  
VISUAL CORE DESCRIPTION

SEDIMENTS / SEDIMENTARY ROCKS

SECTION DESCRIPTION



dark gray (N4)  
homogeneous

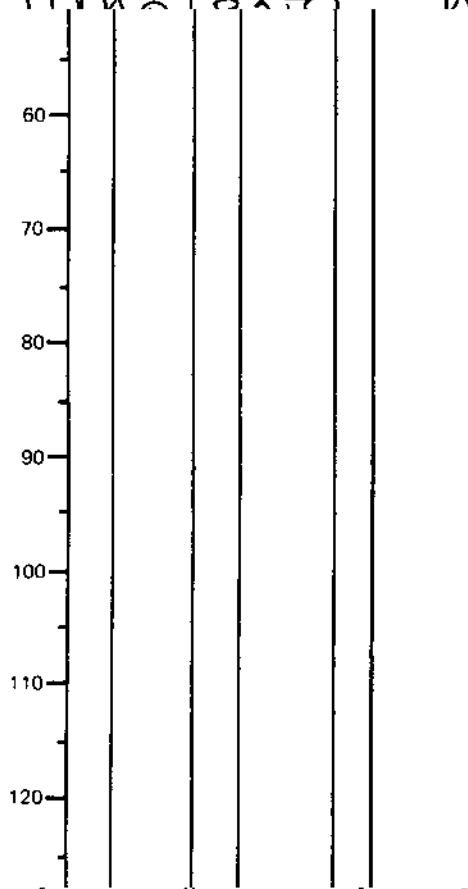
calcareous, silicified, claystone

two different  
lithologies here

and less  
silicified stuff)

shattered by drilling

Sand + Silt



your sample was retrieved with  
an air hammer. Drill bit  
was found in CC. Pipe trip &  
change to RCB follows this cor

