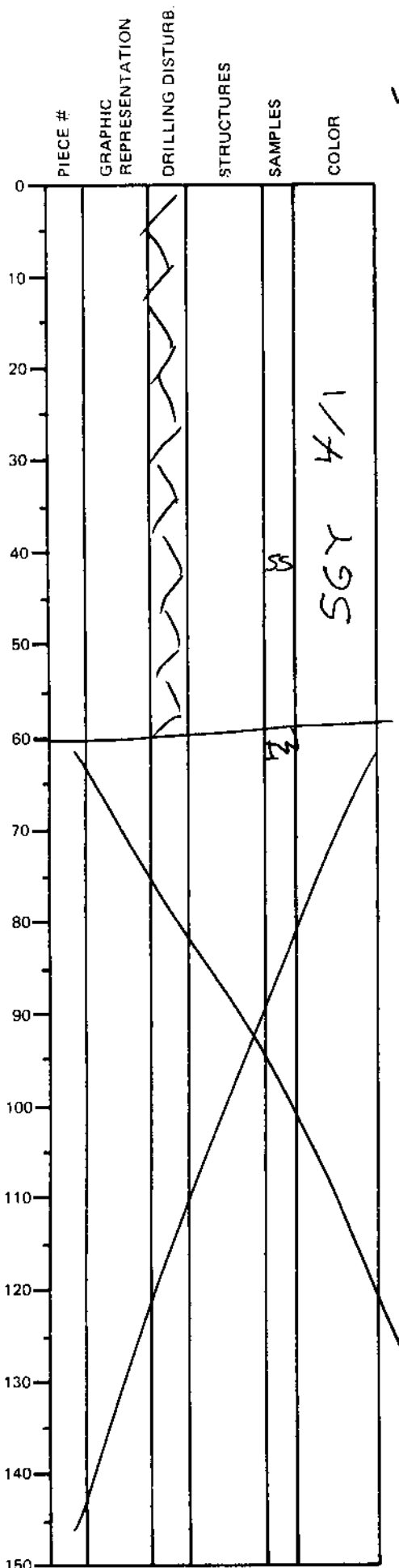


LEG	SUB	SITE	HOLE	CORE	TYPE	SEC
169		1038B		13	201	
OBSERVER						
CAR						

ODP
VISUAL CORE DESCRIPTION

SEDIMENTS / SEDIMENTARY ROCKS

SECTION DESCRIPTION



Dark greenish gray (SGY 4/1)
MEDIUM SANDSTONE. Moderately
indurated, massive, non-
calcareous.

Small (2-4 cm), round to elliptical,
white patches are present
locally in this section & in
section 2 (below); the white
mineral may be anhydrite (?).

Greenish color seems to be
impure by a green
clino-
amphibole
= actinolite
?

100% SAND + SILT