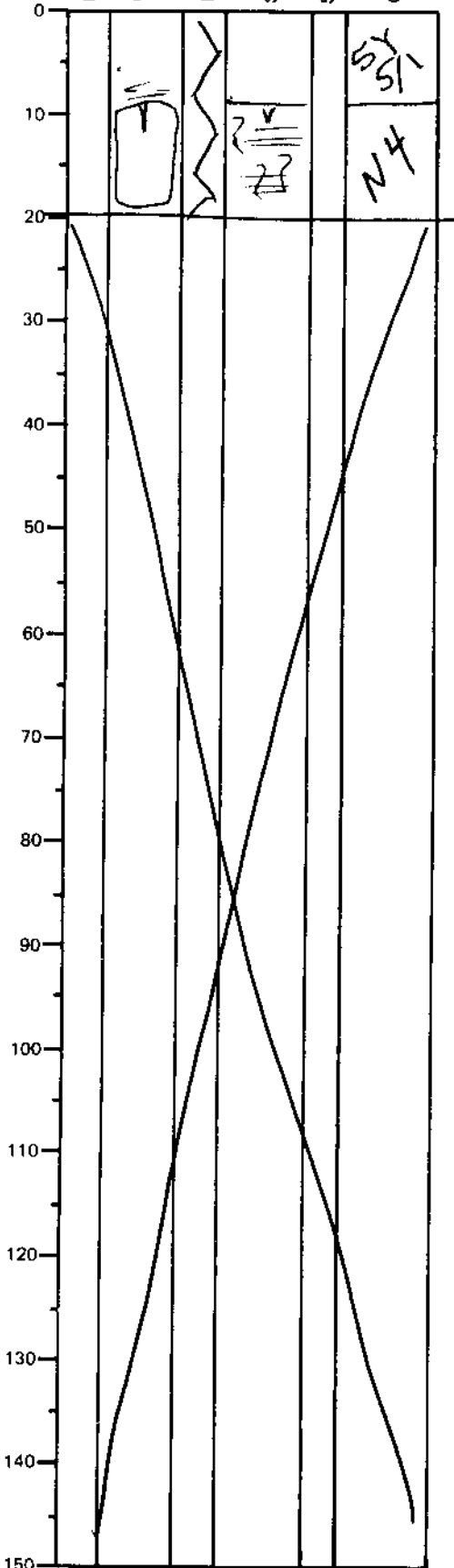


LEG	SUB	SITE	HOLE	CORE	TYPE	SEC
169		1038	B	13R	CC	
OBSERVER						
CAR						

ODP
VISUAL CORE DESCRIPTION

SEDIMENTS / SEDIMENTARY ROCKS

SECTION DESCRIPTION



0-7 cm: Gray (54 5/1),

MEDIUM SANDSTONE; as in sections 1 & 2, but not as green.

Parallel & wavy laminations + bioturbation are present in the CLAYSTONE

7-19 cm: Dark gray (N4)

Indurated CLAYSTONE

with a 2 cm long vein (crack) filled with

~~anhydrite or barite (?)~~

and quartz (?) and

anhydrite or barite