

LEG	SUB	SITE	HOLE	CORE	TYPE	SEC
169		1038C		01R01		

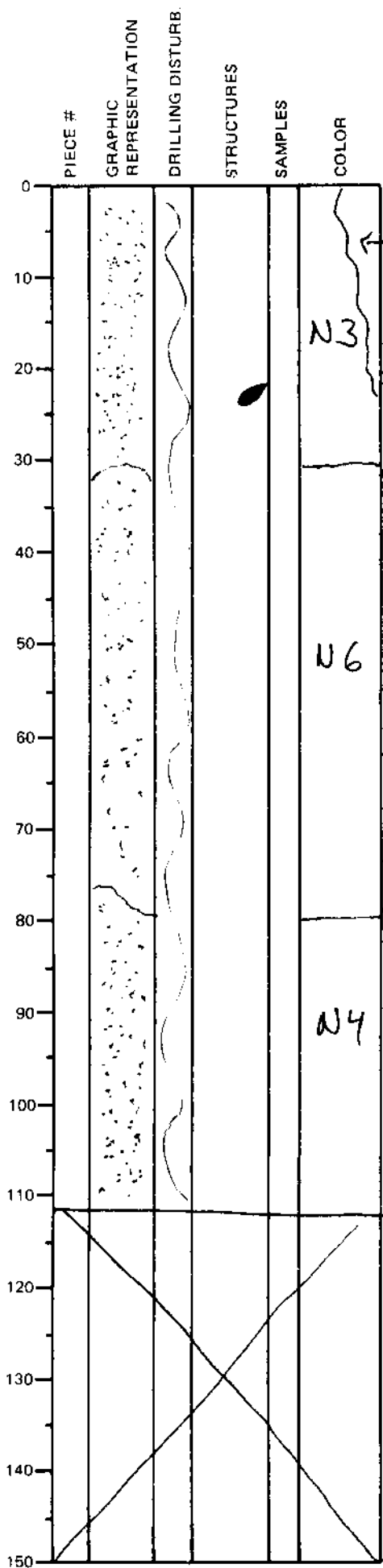
ODP
VISUAL CORE DESCRIPTION

SEDIMENTS / SEDIMENTARY ROCKS

OBSERVER

SECTION DESCRIPTION

LAC



7.5 YR 3/2
(dark brown)
Sulfidation oxidation (?)

alters quickly to 5Y 6/3
(pale olive)

0-32cm: Dark gray, poorly sorted, silty to medium sand with sulfides (10%), silty and clayey aggregates, quartz, feldspar and mica. Volcanic glass occur as minor component. (70% sand, 30% silt)

32-78cm: Light gray, silty clay with mainly sand-sized sulfides (10-30%) and silt-sized quartz. (20% sand, 30% silt, 60% clay)

78-112cm: Gray, silty to fine sand with sulfides (40-50%), quartz, feldspar and mica. Sulfides commonly shows a rough, jagged rim. (20% sand, 30% silt)
Sulfides are pyrite, spinelike, pyrobitic and minor chalcopyrite

Major lithology: Fine to medium sand with sulfides, quartz, feldspar and mica.

The first 20cm contains oil!