

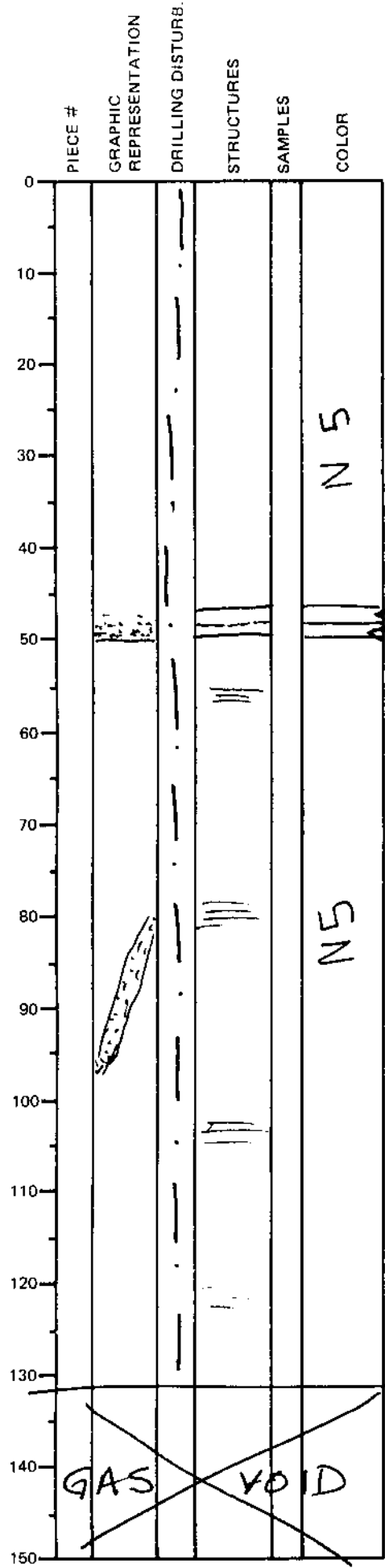
LEG	SUB	SITE	HOLE	CORE	TYPE	SEC
169		10386		BH03		

ODP  
VISUAL CORE DESCRIPTION

SEDIMENTS / SEDIMENTARY ROCKS

SECTION DESCRIPTION

OBSERVER  
CAR



Gray (NS), calcareous SILTY CLAY, as in Section 2 with <sup>local</sup> faint siltier laminations from 50 to 132 cm.

A 2cm-thick interval of <sup>silty</sup> very fine sand is present from 48-50 cm. The sand is very light gray (N7) in the top 1cm and very dark gray (N4) ~~at~~ in the lower 1cm.

A steeply (~30°) dipping very fine sand layer is present, cutting the silty clay, at 80-95 cm. (Sand dila... fluid escape...?)

2% SILT + SAND

GAS VOID