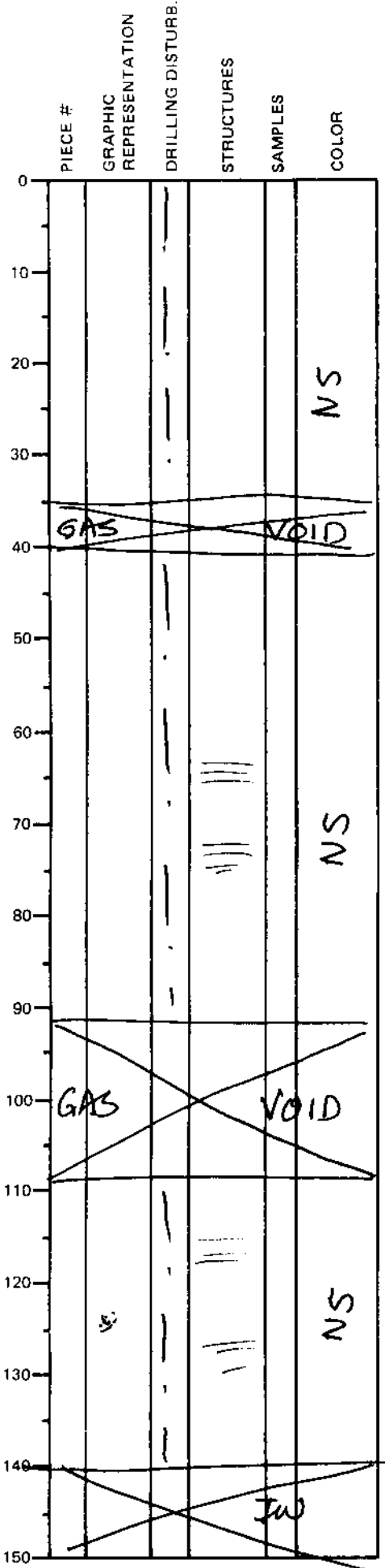


LEG	SUB	SITE	FLOW	CORE	TYPE	SEC
169		10389		3	A05	
OBSERVER						CAR

ODP  
VISUAL CORE DESCRIPTION

SEDIMENTS / SEDIMENTARY ROCKS

SECTION DESCRIPTION



gray (NS),  
CLAYEY SILT & SILTY CLAY,  
 as in the previous  
 section; CLAY SILT is  
 dominant here; calcareous;  
 mostly massive, but faint  
 parallel laminations are  
 locally visible.

90% SILT + SAND

"Bleb" of black, sand-size ~~sediment~~ wood + authigenic ~~at 124-125 cm.~~