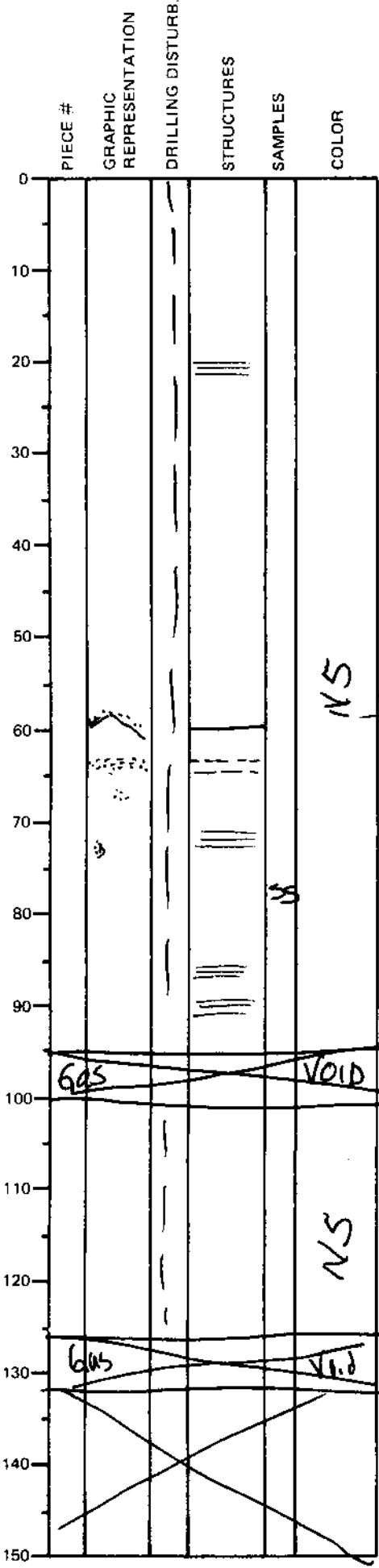


LEG	SUB	SITE	ROW	CORE	TYPE	SEC
169		10386			4H04	
OBSERVER						
CAR						

ODP  
VISUAL CORE DESCRIPTION  
SEDIMENTS / SEDIMENTARY ROCKS  
SECTION DESCRIPTION



Gray (NS), very calcareous,  
SILTY CLAY, weakly  
indurated.

Local, faint parallel laminated  
intervals of slightly siltier  
SILTY CLAY.

One sharp contact; at 62 cm; 1/2 cm-  
thick CHAMEY SILT laminae

63-67 cm → a FINE SAND lamina;  
light gray (N7); micaceous,  
calcareous.

The interval below this SILT/SAND laminae  
zone is very calcareous & contains many  
brans & nannos... It may be hemipelagic.

1% SILT + SAND