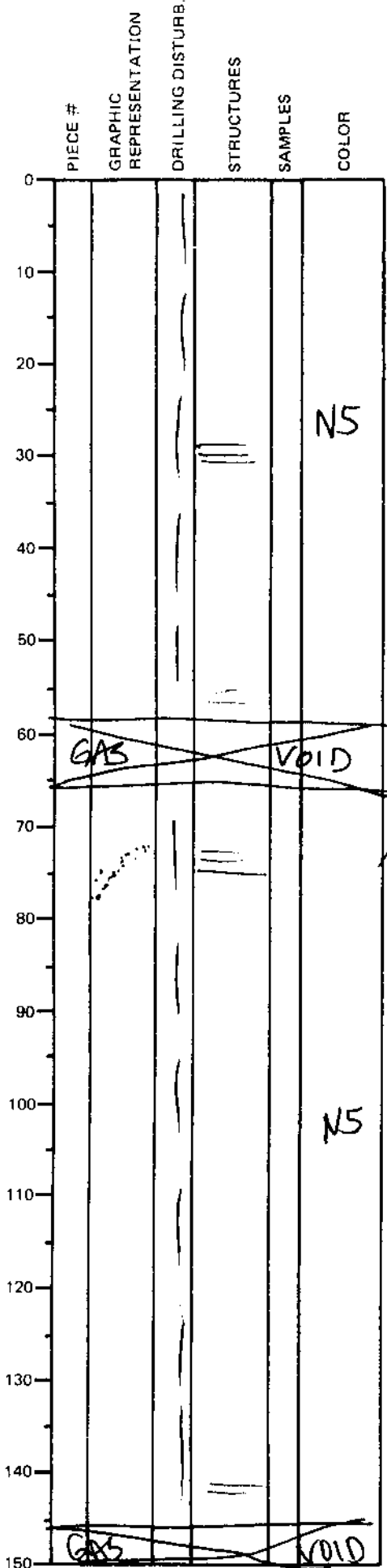


LEG	SUB	SITE	HOLE	CORE	TYPE	SEC
169		10386		4H07		
ODP VISUAL CORE DESCRIPTION				OBSERVER		
SEDIMENTS / SEDIMENTARY ROCKS				CAR		
SECTION DESCRIPTION						



Dominantly SILTY CLAY,
 very calcareous, gray (N5).

Minor interval of SILTY
VERY FINE SAND + SILT
 (disturbed) at 48-81 cm.

48-81 cm
 sandy interval

A few faint parallel
 laminations

~3% SAND + SILT