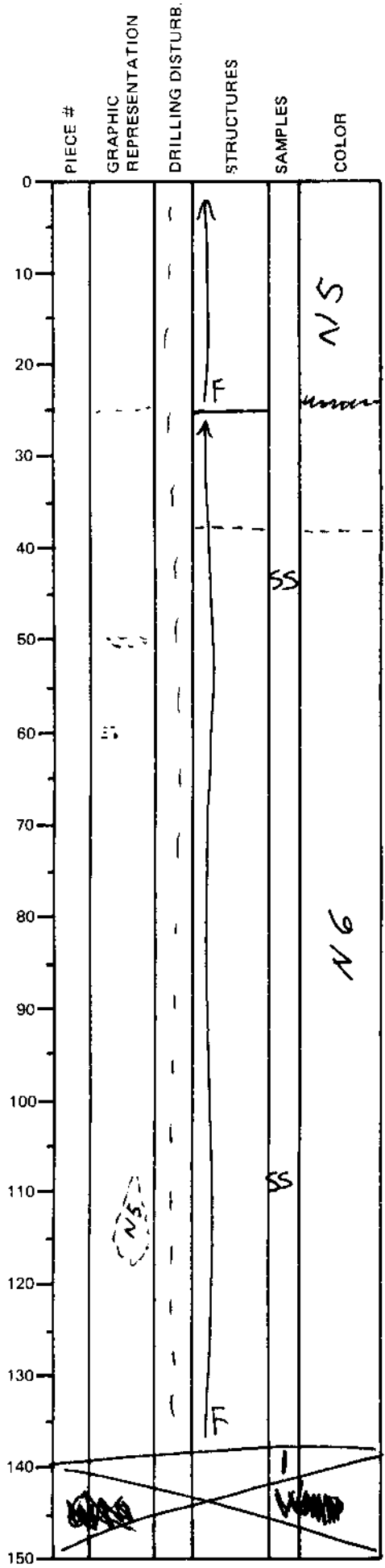


LEG	SUB	SITE	HOLE	CORE	TYPE	SEC
169		10389			S#02	
OBSERVER						
CAZ						

ODP
VISUAL CORE DESCRIPTION

SEDIMENTS / SEDIMENTARY ROCKS

SECTION DESCRIPTION



0-~~27~~₂₆ cm - gray (NS) med. sand, v. calcereous, micaceous, locally well indurated (in part) small micro nodules

26-37 cm - gray (NS) silty clay, v. calcereous, micaceous

37-140 cm - gray (NG) v. fine sand, v. calcereous micaceous,
- patches of dark staining, possibly hydrocarbons; 49-51 cm
61-62 cm
~~104-114 cm~~

104-114 cm - gray (NS) clay patch (disturbed) in middle of f. sand.

93% sand + silt.