

LEG	SUB	SITE	HOLE	CORE	TYPE	SEC
169		10386		6X		2

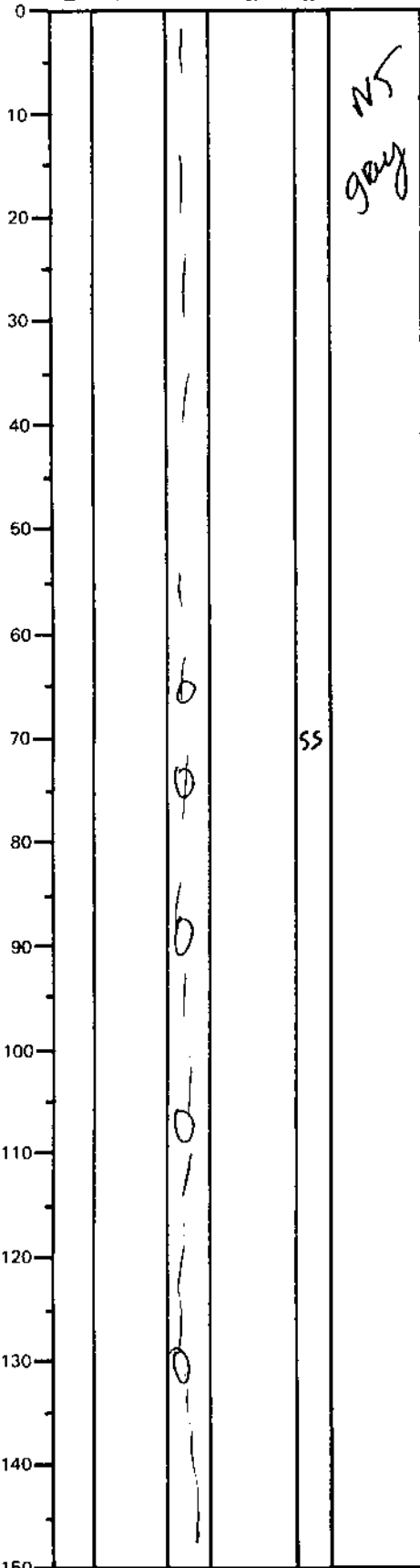
ODP
VISUAL CORE DESCRIPTION

SEDIMENTS / SEDIMENTARY ROCKS

OBSERVER

Fluid + G

SECTION DESCRIPTION



0-58cm silty clay
~~clayey silt~~ described
slightly indurated
- flaky chunks of slightly indurated sed.

58-151cm chunks are more indurated, more disturbed + probably dolimitiz
- local concentrations of (<1%)
pyrite crystals
- fine grained sulphides (disseminated)
- slightly more 'soupy' than 0-58cm.

(hexagonal pyrrhotite)
SS → ~10% sulfides/disseminated in the silty clay at this interval

gas-rich; smells like 1/2 S when crushed

0% SILT + SAND

~~80% silt + clay sand~~