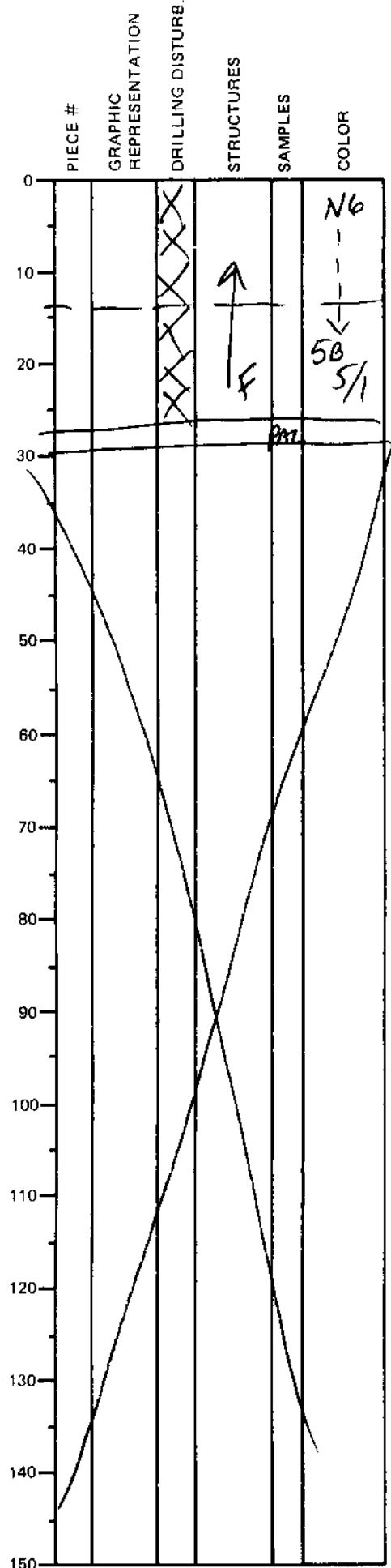


LEG	SUB	SITE	COL	CORE	TYPE	SEC
169		1038H		02X	CC	
OBSERVER						CAR

ODP
VISUAL CORE DESCRIPTION

SEDIMENTS / SEDIMENTARY ROCKS

SECTION DESCRIPTION



Gray (N6) to bluish gray
(5B 5/1) CLAYSTONE. Badly
brecciated by coring.
Slight mottled texture apparent
at 20-24 cm, otherwise no
obvious structures.

bl. greenish 5B 5/1 silt, dolomite-~~altered~~
altered at base (24-27cm)

10% SILT + SAND