

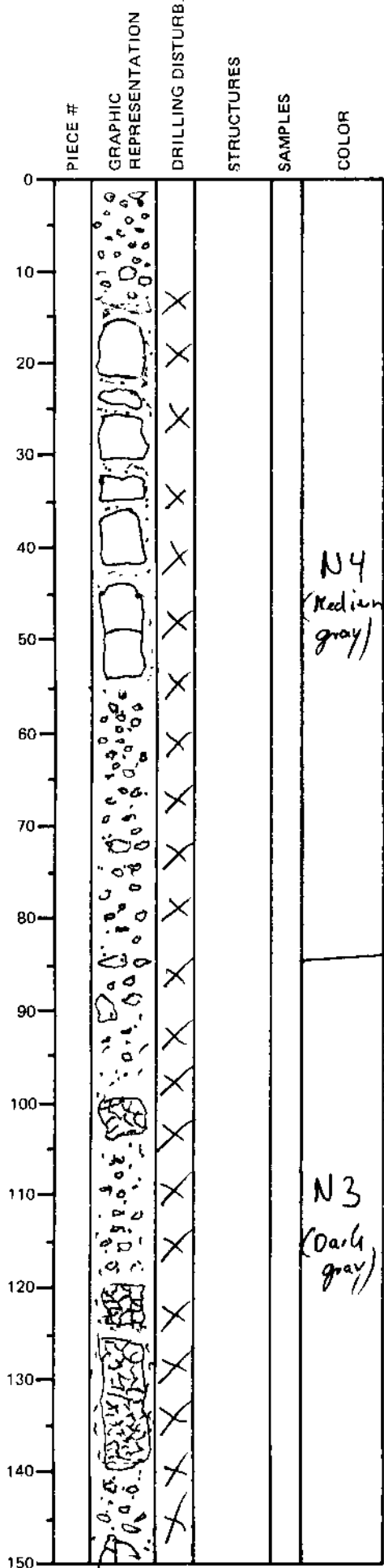
LEG	SUB	SITE	HOLE	CORE	TYPE	SEC
169		1038H		05X61		

ODP
VISUAL CORE DESCRIPTION

SEDIMENTS / SEDIMENTARY ROCKS

SECTION DESCRIPTION

OBSERVER
LAL



12-85cm: Bisquits and drilling breccia
of Medium-grained Sandstone
(100% Silt & Sand)

85-150cm: ~~Sandstone~~ ^{Clay} drilling Breccia
(0% Silt & Sand)

0-12cm: Rubble of a mixture of
Mudstone, Siltstone and Sandstone
(upto 1cm in diameter)

Also some pieces of up to 2cm - sized
sulfides - larger ones are massive fine grained
pyrrhotite intergrown with white muddy barite ^{sulfide}
Also some v. small more exotic gravel bits CuFe₂ + arsenopyrite
(Bornite?)

Major lithology: Medium Sandstone and
Claystone

claystone is calcareous