

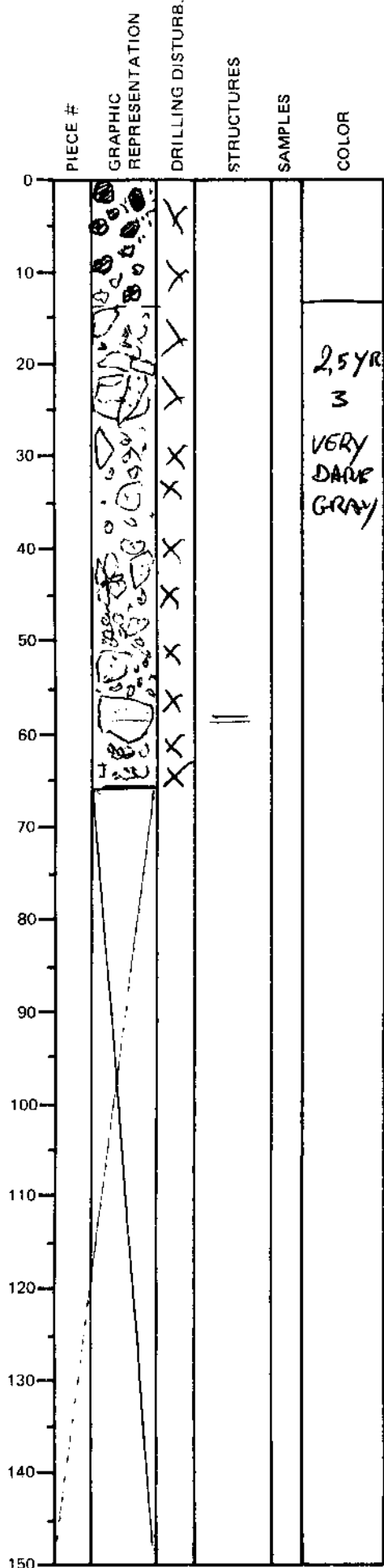
LEG	SUB	SITE	COL	CORE	TYPE	SEC
169		1038H		06X	01	

ODP  
VISUAL CORE DESCRIPTION

SEDIMENTS / SEDIMENTARY ROCKS

OBSERVER  
PET/ZUF

SECTION DESCRIPTION



0 to 13cm: drill-induced rubble  
of massive sulfide (fall in from  
further uphole (top));  
contains ~ 10 pieces of angular to  
subrounded 0.3 to 2 cm diameter clasts  
of ① dense, compact, f. gr. pyroxhote  
(massive); ② ~~coarse~~ coarse-grained  
(to 3mm) hexagonal pyroxhote plates  
with a preferred orientation (massive).  
③ one piece of bluishgrey (B 5/1)  
clay-sulfite altered claystone  
w ~ 3% v.f. gr. disseminated pyrite  
15- to 66 cm

Drill-induced breccia of  
slightly indurated very dark gray  
coarse grained SILTSTONE (parallel laminae)  
Very rich (w.?) in wood fragments  
up to 2 mm diameter  
disseminated lamellar crystals  
of white mica (medium sized size)  
- carbonate absent  
90% SAND + SILT

calcareous in bulk sample