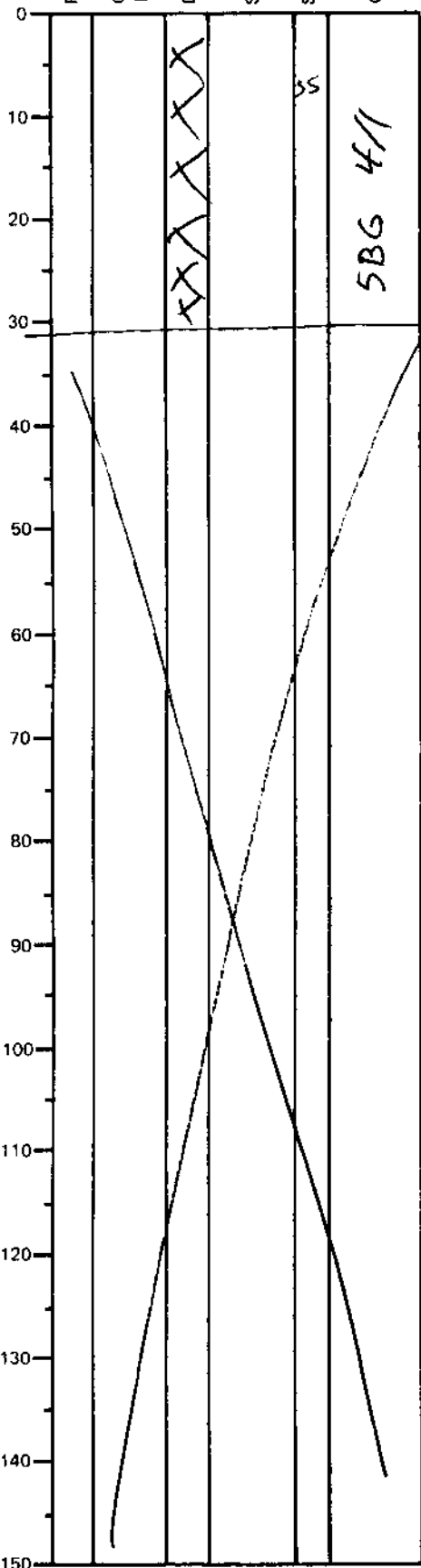


| | | | | | | |
|--------------------------------|-----|-------|------|----------|------|-----|
| LEG | SUB | SITE | HOLE | CORE | TYPE | SEC |
| 169 | | 1038I | | 16X | CC | |
| ODP VISUAL CORE DESCRIPTION | | | | OBSERVER | | |
| SEDIMENTS / SEDIMENTARY ROCKS | | | | CARC | | |
| SECTION DESCRIPTION | | | | | | |



Dark greenish gray (SBG 4/1)
MEDIUM SANDSTONE, calcareous,
 massive, moderately
 indurated.

Color is very different (darker) than
 than sand in the (last core (12X))
 and similar to that at the
 base of the turbidite in core 9X-2.

100% SILT + SAND

high magnetic susceptibility
 compared to 12X sandstone
 main difference compared to
 12X is chlorite content
 is ~~not~~ higher in 16X