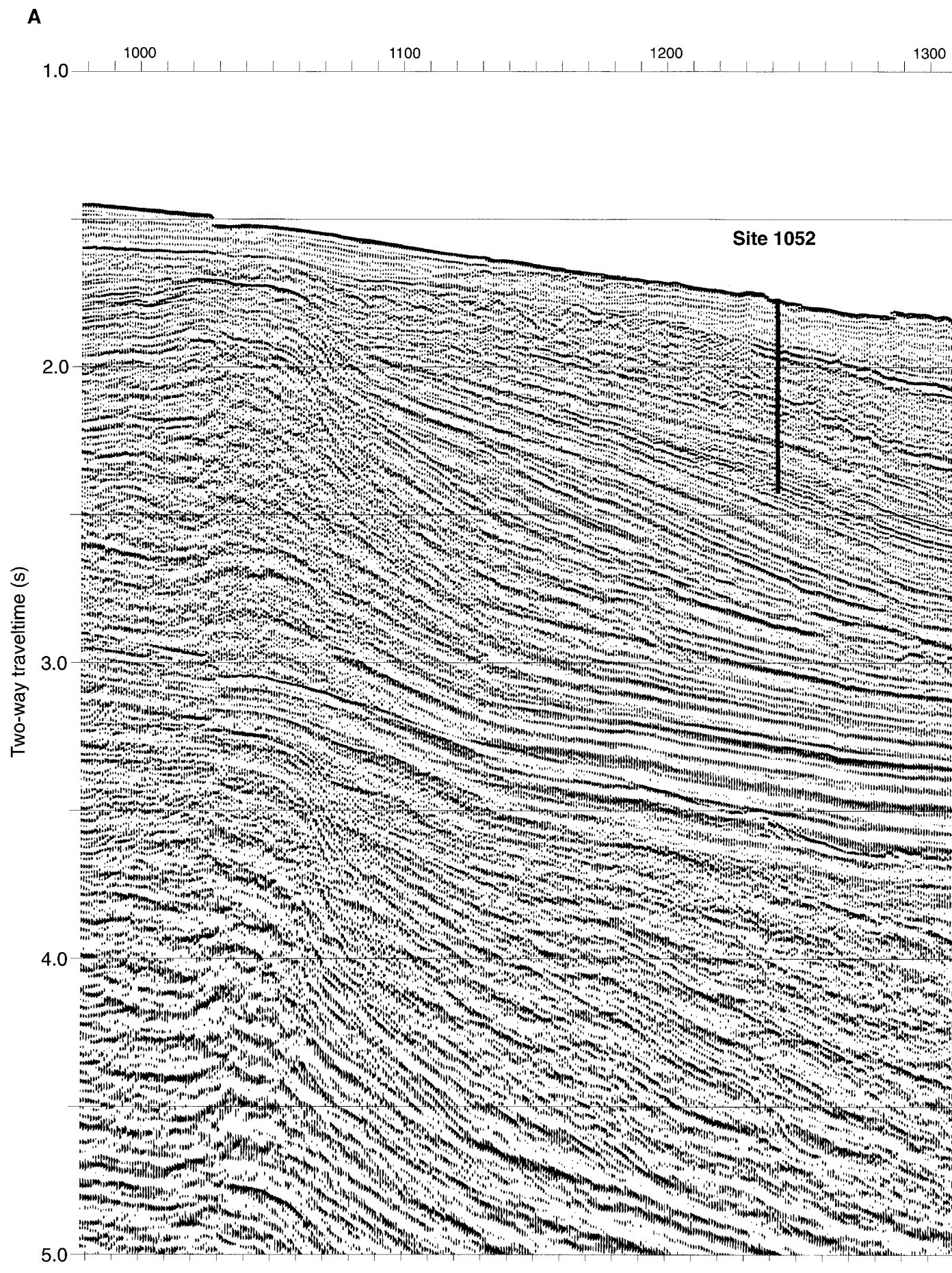
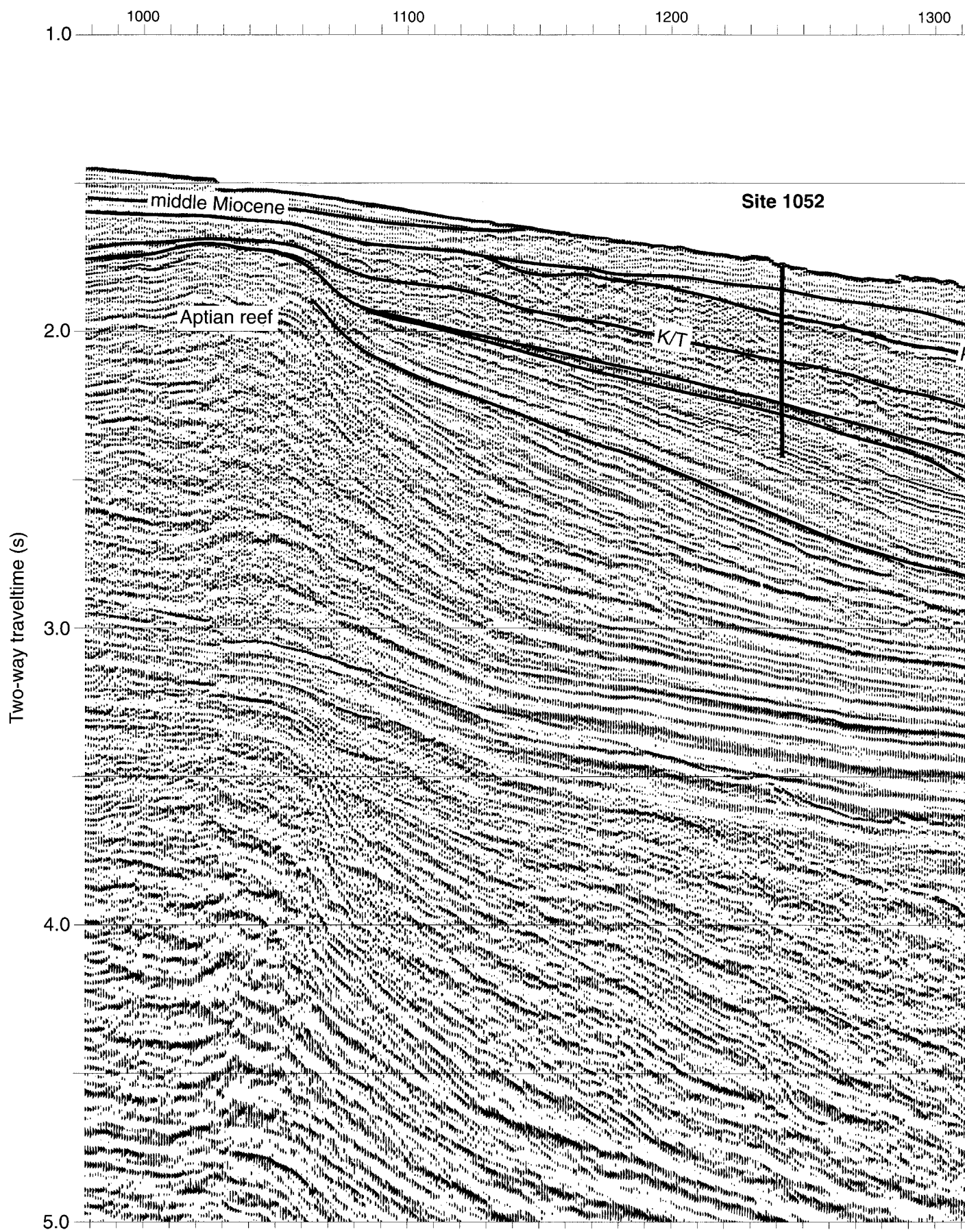


ODP Proceedings, Initial Reports, Volume 171B: Chapter 1: Figure 3. A. Multichannel seismic (MCS) Line TD-5 showing locations and depths of penetration of Leg 171B sites. B. Seismic interpretation showing the major reflectors, their interpreted ages, and the locations of Leg 171B sites.



B

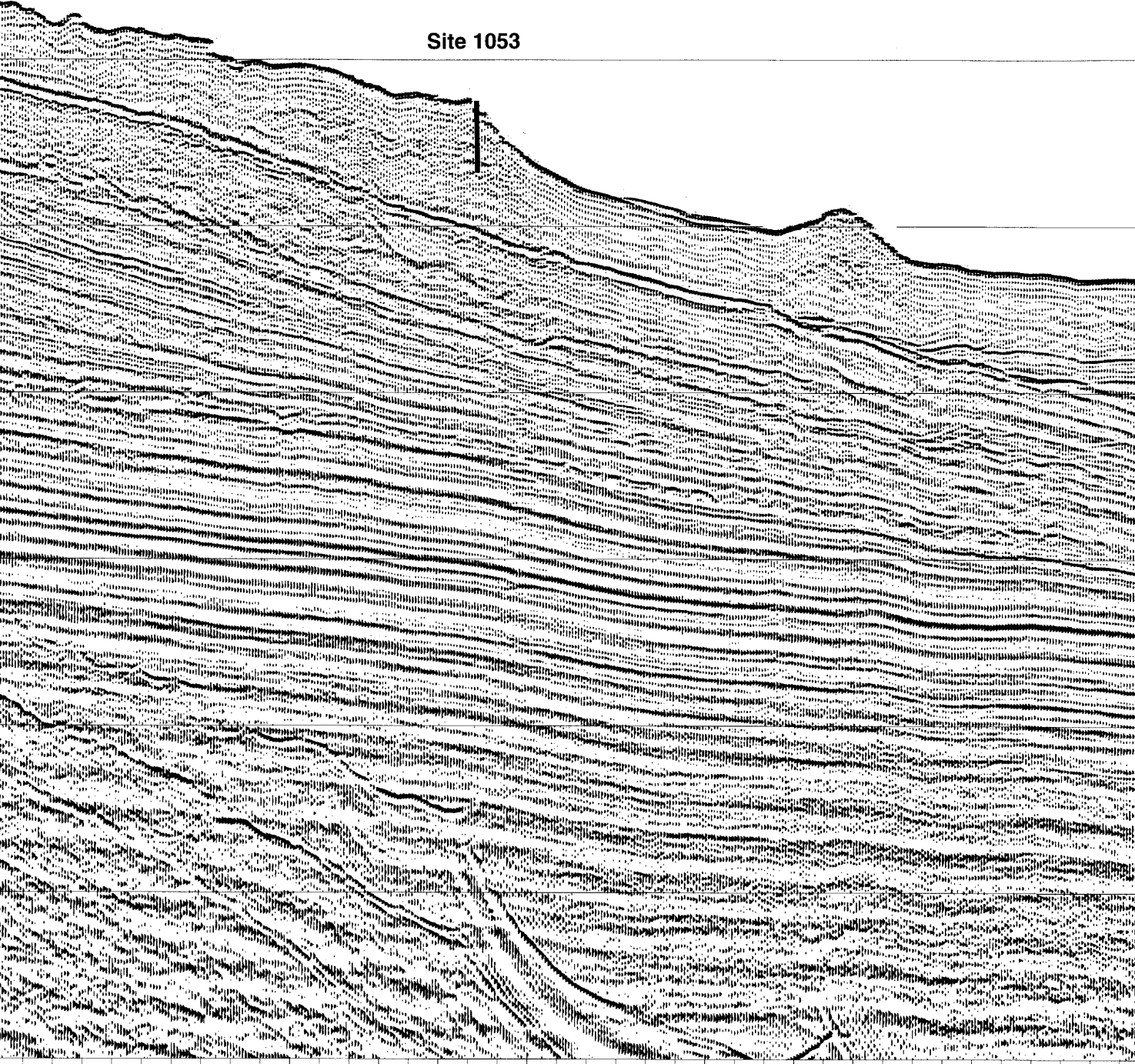
00

1400

1500

1600

Site 1053

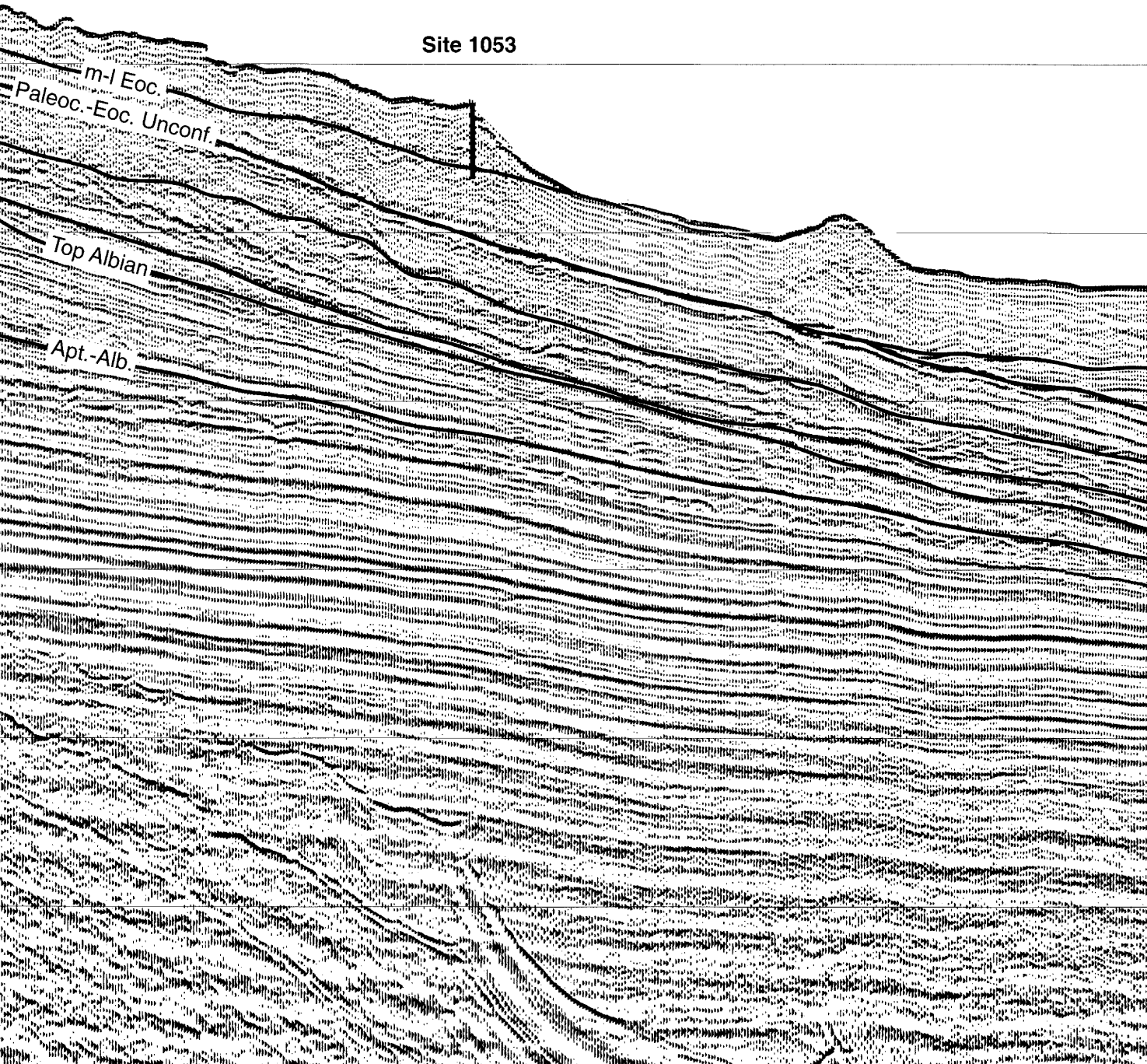


1400

1500

1600

Site 1053

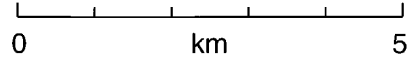


1700

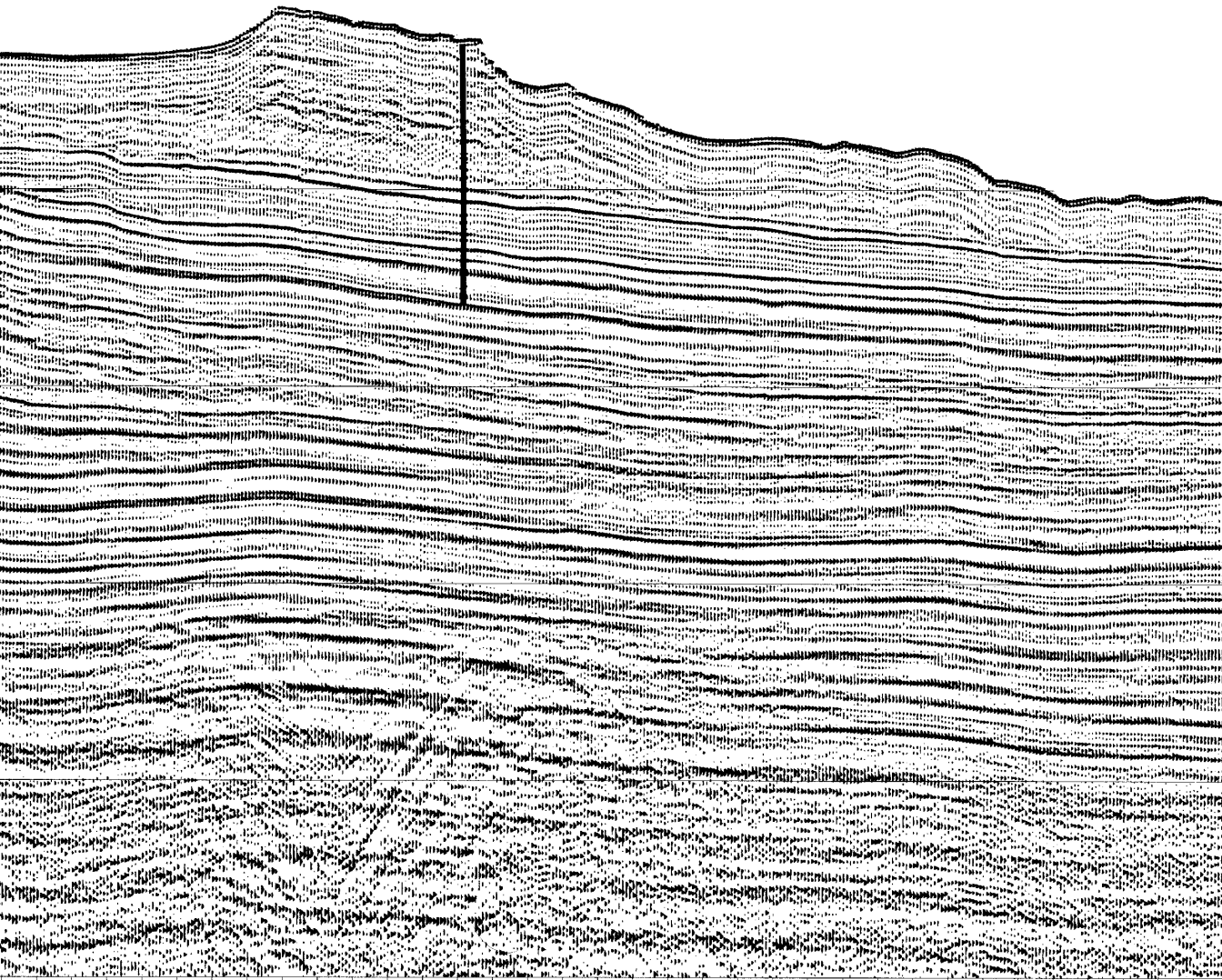
1800

1900

2000



Site 1051

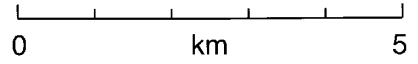


1700

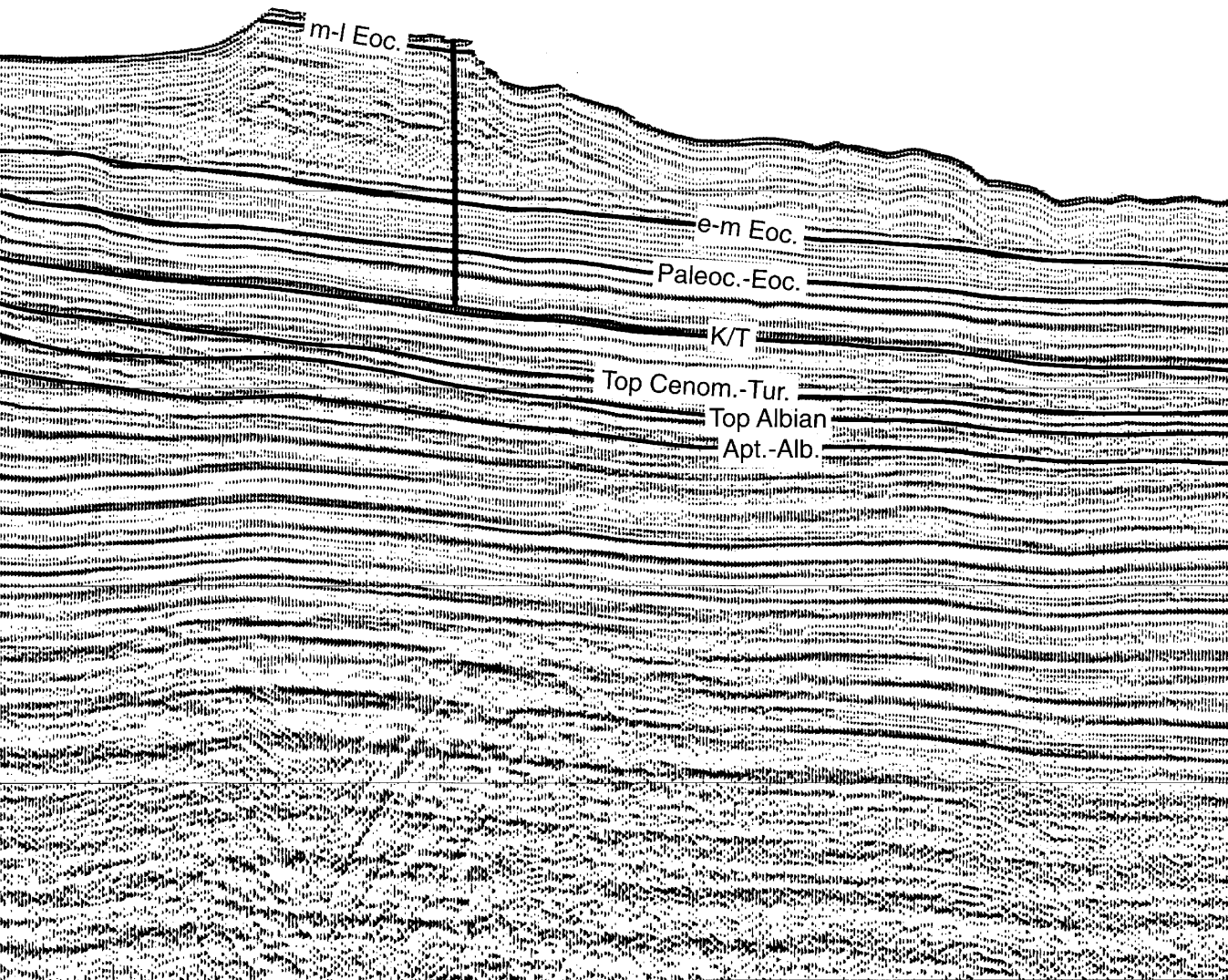
1800

1900

2000



Site 1051



2100

2200

2300

1.0

2.0

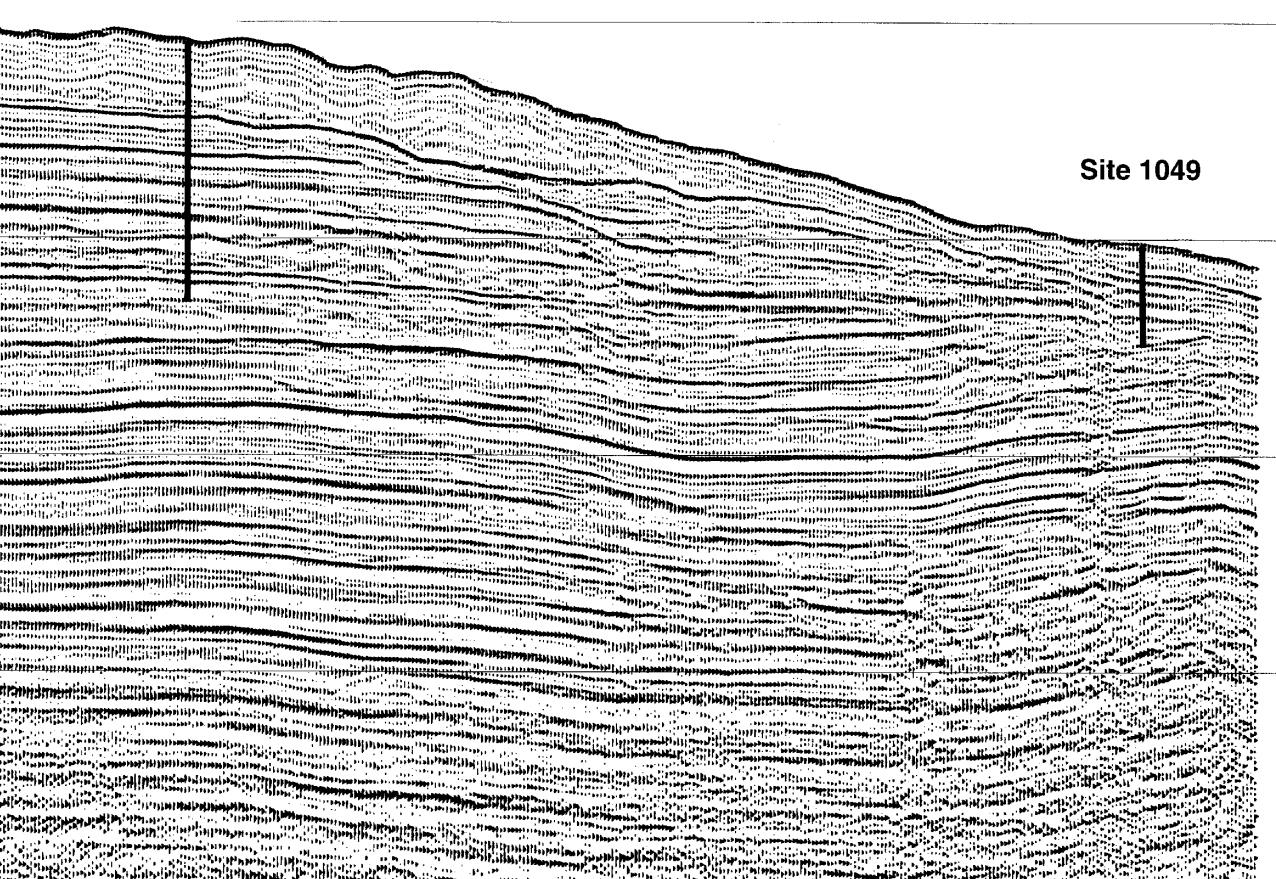
3.0

4.0

5.0

Site 1050

Site 1049



2100

2200

2300

1.0

2.0

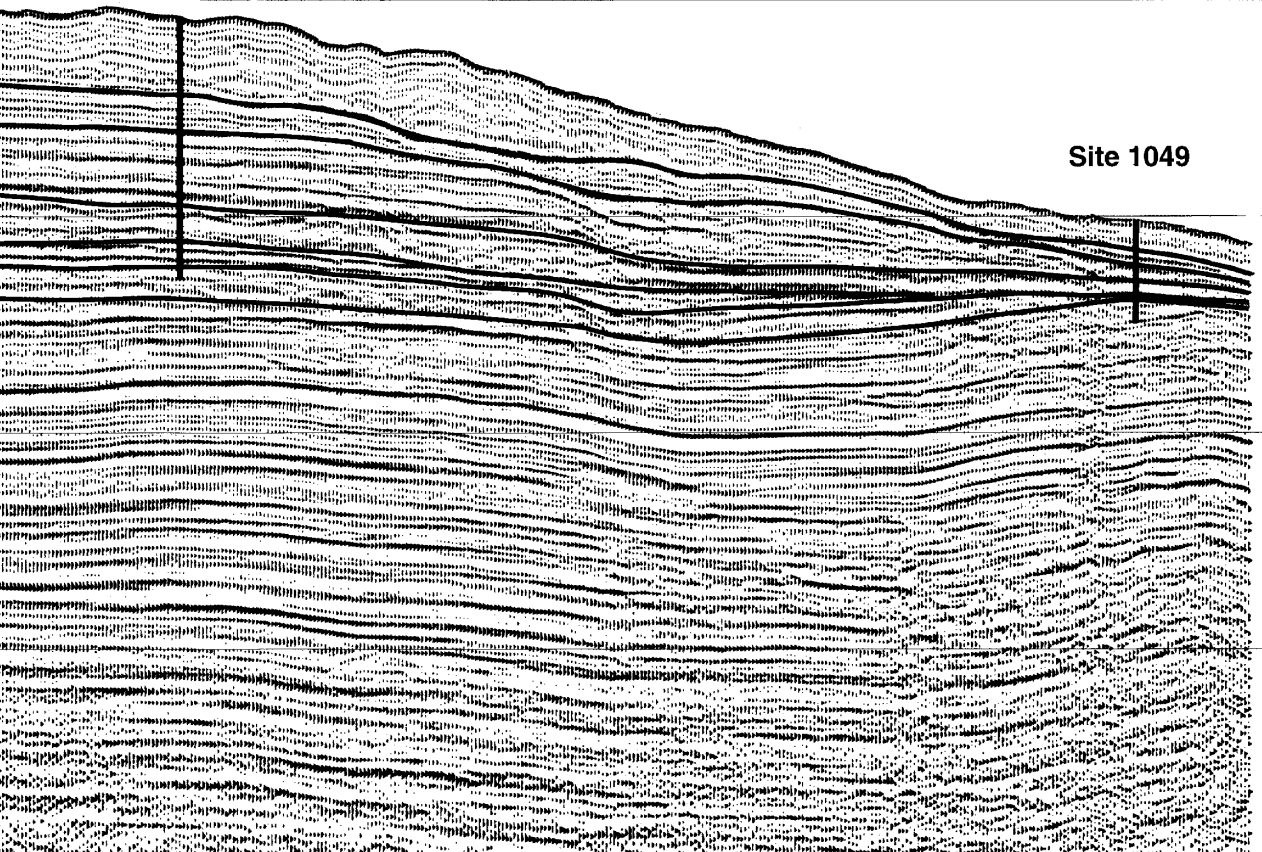
Site 1050

3.0

Site 1049

4.0

5.0



2100

2200

2300

1.0

2.0

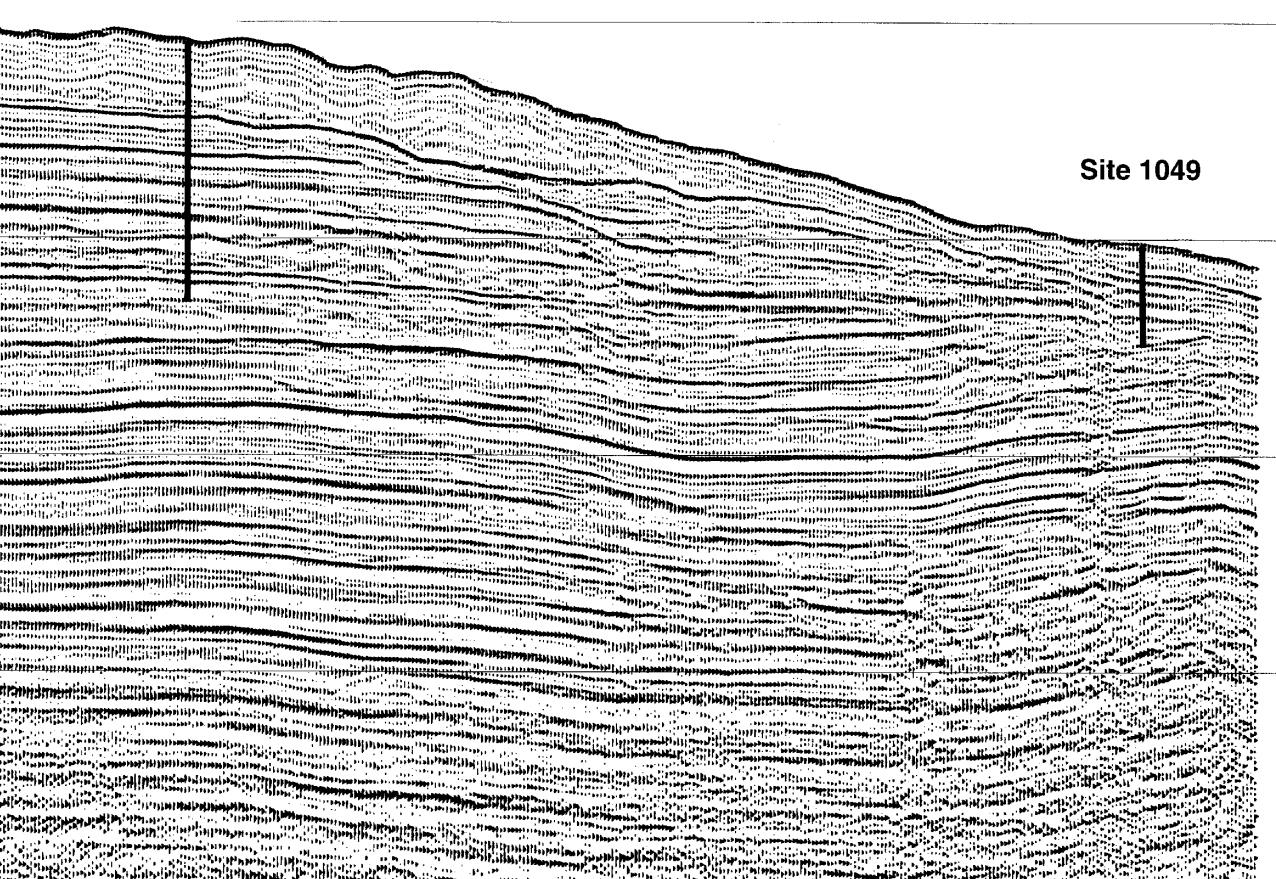
3.0

4.0

5.0

Site 1050

Site 1049



2100

2200

2300

1.0

2.0

Site 1050

3.0

Site 1049

4.0

5.0

