

Site 1059 Hole A Core 1H

Cored 0.0-3.8 mbsf

1059A-1H

METERS	CORE AND SECTION	LITHOLOGY	BIOTURBATION INTENSITY	PHYSICAL STRUCTURES	ACCESSORIES	CORE DISTURBANCE	SAMPLES	COLOR	REMARKS
0.0 1 2 3 3.8							SS IW IW XRD SS PAL	lt gn GY med gn GY mdk gn GY	<p>NANNOFOSSIL CLAY and CLAY WITH SILT</p> <p>General Description: This core contains light greenish gray (5GY 7/1) NANNOFOSSIL CLAY, and greenish gray (5GY 6/1) CLAY WITH SILT. Upper 10 cm is soupy.</p> <p>SS: Nannofossil clay</p> <p>SS: Clay with silt</p>



Site 1059 Hole A Core 2H

Cored 3.8-13.3 mbsf

1059A-2H

METERS	CORE AND SECTION	LITHOLOGY	BIOTURBATION INTENSITY	PHYSICAL STRUCTURES	ACCESSORIES	CORE DISTURBANCE	SAMPLES	COLOR	REMARKS
0	1								<p>CLAY WITH NANNOFOSSILS AND SILT and CLAY WITH SILT</p> <p>General Description: This core contains brownish gray (5YR 4/1) CLAY WITH NANNOFOSSIL AND SILT, and olive gray (5Y 5/1) CLAY WITH SILT. A few silt layers are scattered in the lower section of the core.</p> <p>Sections 1-3 contain several black pyrite patches, but no nodules.</p> <p>Red lutite</p> <p>SS: Clay with nannofossils and silt</p> <p>SS: Clay with silt</p> <p>Burrows filled with coarser material</p> <p>SS: quartz silt (with algal spores)</p>
1	2						IW		
2	3						SS		
3	4						IW	lt br GY	
4	5						IW		
5	6						XRD		
6	7						IW		
7	8						SS	med gn GY	
8	9						IW	lt br GY	
9	10						SS	med ol GY	
10	11						IW		
11	12						SS		
12	13						PAL		

Site 1059 Hole A Core 3H

Cored 13.3-22.8 mbsf

1059A-3H

METERS	CORE AND SECTION	LITHOLOGY	BIOTURBATION INTENSITY	PHYSICAL STRUCTURES	ACCESSORIES	CORE DISTURBANCE	SAMPLES	COLOR	REMARKS
1									<p>CLAY WITH SILT</p> <p>General Description: This core contains olive gray (5Y 4/1) CLAY WITH SILT. Fracturing of the soft sediment, caused by gas expansion, begins in this core and is present in subsequent cores downhole.</p> <p>SS: Clay with silt</p> <p>Biosiliceous-filled burrow</p> <p>XRD-analysis on black concreted material</p>
2							IW med ol GY		
3							SS mlt ol GY		
4							IW		
5							IW		
6							IW		
7							IW med ol GY		
8							XRD		
9							IW		
10							PAL		

Site 1059 Hole A Core 4H

Cored 22.8-32.3 mbsf

1059A-4H

METERS	CORE AND SECTION	LITHOLOGY	BIOTURBATION INTENSITY	PHYSICAL STRUCTURES	ACCESSORIES	CORE DISTURBANCE	SAMPLES	COLOR	REMARKS
0	1	med gn GY							<p>NANNOFOSSIL CLAY WITH DIATOMS</p> <p>General Description: The dominant lithology in this core is a greenish gray (5GY 6/1) NANNOFOSSIL CLAY WITH DIATOMS. Dark green CLAY WITH SILT occurs as a minor lithology in Section 1. In the bottom of the core, the sediments get coarser.</p> <p>SS: Nannofossil clay with diatoms</p> <p>SS: Clay with nannofossil, diatoms, and foraminifers</p> <p>Color banding occurs throughout Section 8</p>
0.2	2	mtl gn GY							
0.4	3								
0.6	4								
0.8	5	mtl ol GY							
1.0	6								
1.2	7	mtl ol GY							
1.4	8	med gn GY							
1.6	9								
1.8	10								

Site 1059 Hole A Core 5H

Cored 32.3-41.8 mbsf

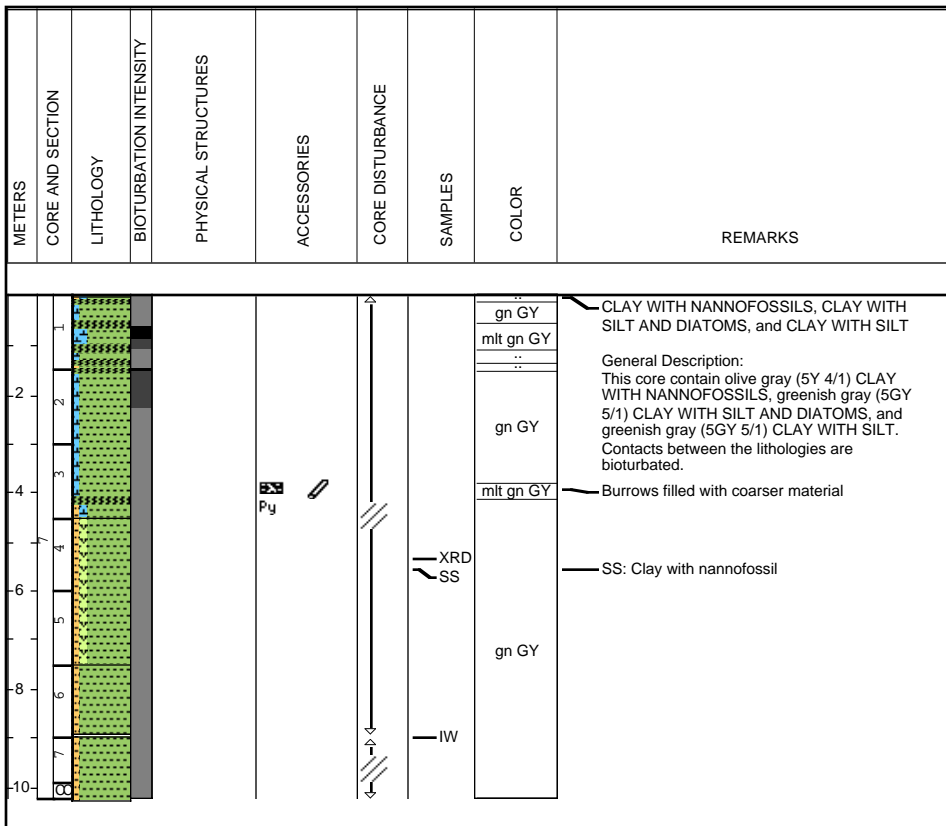
1059A-5H

METERS	CORE AND SECTION	LITHOLOGY	BIOTURBATION INTENSITY	PHYSICAL STRUCTURES	ACCESSORIES	CORE DISTURBANCE	SAMPLES	COLOR	REMARKS
1									<p>CLAY WITH SILT AND NANNOFOSSILS and CLAY WITH SILT</p> <p>General Description: This core contains greenish gray (5GY 5/1) CLAY WITH SILT AND NANNOFOSSIL, and greenish gray (5GY 6/1) CLAY WITH SILT.</p> <p>SS: Clay with silt and nannofossils SS: Clay with silt</p> <p>Red lutite</p>
2							med gn GY		
3							SS		
4							SS XRD		
5							med ol GY		
6									
7							med gn GY		
8							IW		
9							med gn GY		
10							mdk ol GY		
							med gn GY		
							PAL		

Site 1059 Hole A Core 7H

Cored 51.3-60.8 mbsf

1059A-7H

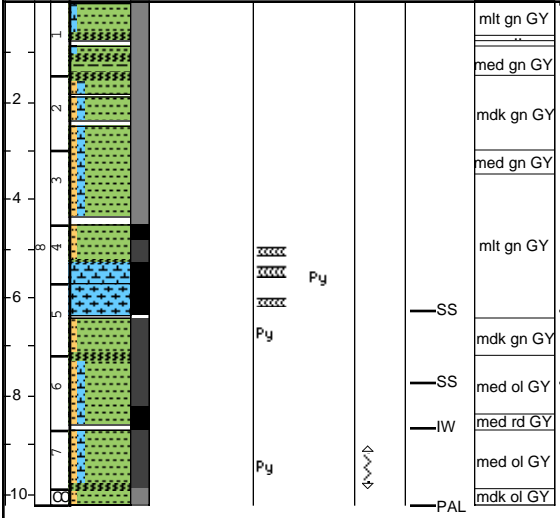


Site 1059 Hole A Core 8H

Cored 60.8-70.3 mbsf

1059A-8H

METERS	CORE AND SECTION	LITHOLOGY	BIOTURBATION INTENSITY	PHYSICAL STRUCTURES	ACCESSORIES	CORE DISTURBANCE	SAMPLES	COLOR	REMARKS
1								mlt gn GY	CLAY WITH NANNOFOSSILS AND SILT and NANNOFOSSIL OOZE
2								med gn GY	General Description: This core contains greenish gray (5GY 5/1) CLAY WITH SILT and CLAY WITH NANNOFOSSILS AND SILT interbedded with a light greenish gray (5GY 8/1) NANNOFOSSIL OOZE in Sections 4 and 5.
3							mdk gn GY		
4							med gn GY		
5							mlt gn GY		
6					Py		SS	SS: Nannofossil ooze	
7					Py		mdk gn GY		
8							SS	SS: Clay with nannofossils and silt	
9							IW		
10					Py		med ol GY		
							med ol GY		
							PAL		



CLAY WITH NANNOFOSSILS AND SILT and NANNOFOSSIL OOZE

General Description:
 This core contains greenish gray (5GY 5/1) CLAY WITH SILT and CLAY WITH NANNOFOSSILS AND SILT interbedded with a light greenish gray (5GY 8/1) NANNOFOSSIL OOZE in Sections 4 and 5.

SS: Nannofossil ooze

SS: Clay with nannofossils and silt

Site 1059 Hole A Core 9H

Cored 70.3-79.8 mbsf

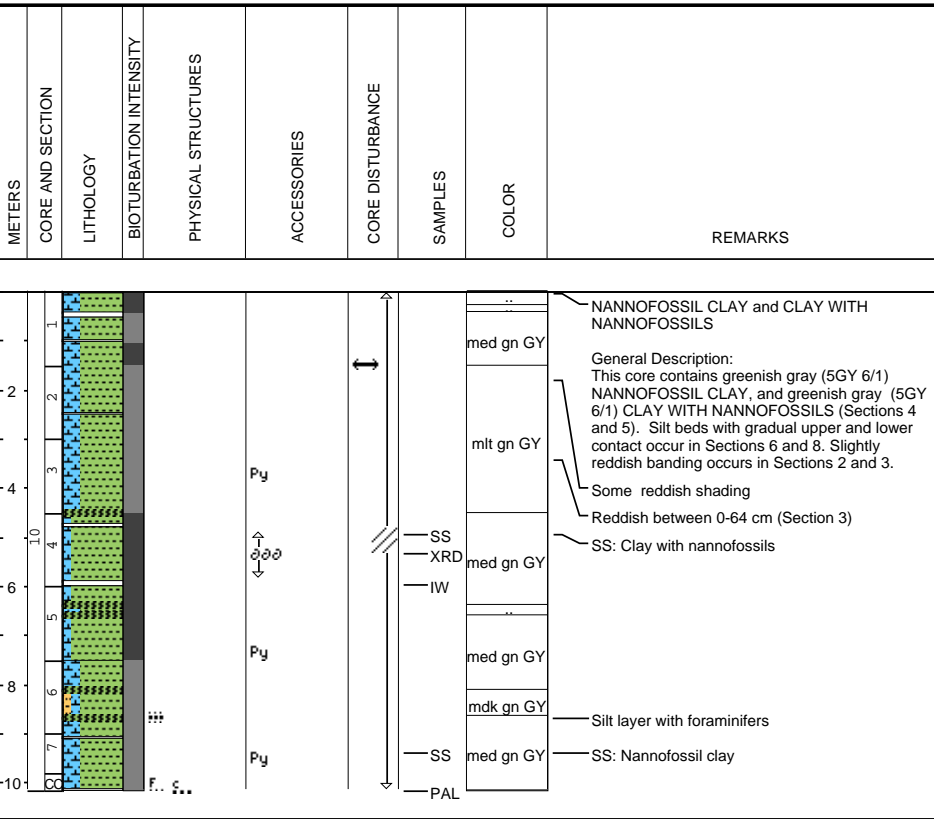
1059A-9H

METERS	CORE AND SECTION	LITHOLOGY	BIOTURBATION INTENSITY	PHYSICAL STRUCTURES	ACCESSORIES	CORE DISTURBANCE	SAMPLES	COLOR	REMARKS
1									<p>CLAY WITH NANNOFOSSILS and NANNOFOSSIL OOZE</p> <p>General Description: This core contains dark greenish gray (5GY 4/1) CLAY WITH NANNOFOSSILS that grades down core into a light greenish gray (5GY 8/1) NANNOFOSSIL OOZE. Two beds with increased content of silt occurs in Sections 4 and 5.</p> <p>SS: Clay with nannofossils and silt</p> <p>SS: Nannofossil clay</p> <p>SS: Nannofossil ooze</p>
2								mdk gn GY	
3									
4								med gn GY	
5								mlt ol GN	
6								med ol GN	
7								mlt ol GN	
8								mlt gn GY	
9									
10									

Site 1059 Hole A Core 10H

Cored 79.8-89.3 mbsf

1059A-10H



Site 1059 Hole A Core 11H

Cored 89.3-98.8 mbsf

1059A-11H

METERS	CORE AND SECTION	LITHOLOGY	BIOTURBATION INTENSITY	PHYSICAL STRUCTURES	ACCESSORIES	CORE DISTURBANCE	SAMPLES	COLOR	REMARKS
0									<p>NANNOFOSSIL OOZE and NANNOFOSSIL CLAY</p> <p>General Description: This core contains light greenish gray (5GY 8/1) NANNOFOSSIL OOZE, and greenish gray (5GY 6/1) NANNOFOSSIL CLAY. Black stains (pyrite) and slight core disturbance occur throughout the core.</p> <p>SS: Nannofossil ooze</p> <p>Section 1, 100-110 cm Red lutite</p>
1								SS lt gn GY	
2								mit gn GY	
3									
4									
5									
6								XRD med gn GY	
7								IW	
8									
9									
10								PAL	

Site 1059 Hole B Core 1H

Cored 0.0-6.7 mbsf

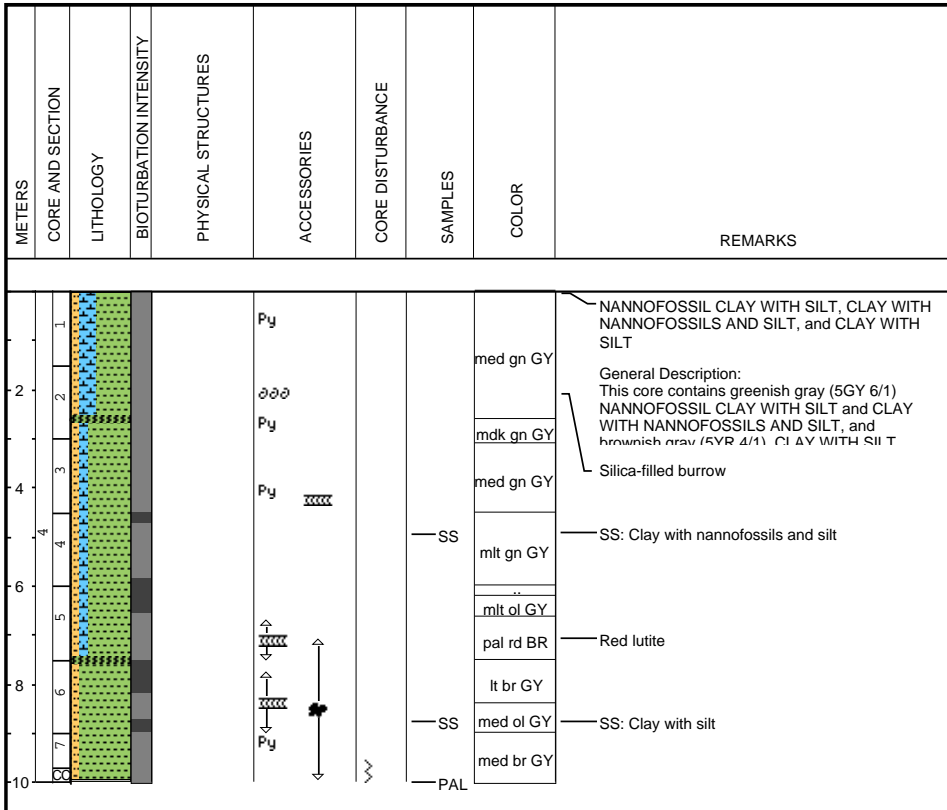
1059B-1H

METERS	CORE AND SECTION	LITHOLOGY	BIOTURBATION INTENSITY	PHYSICAL STRUCTURES	ACCESSORIES	CORE DISTURBANCE	SAMPLES	COLOR	REMARKS
0									<p>NANNOFOSSIL CLAY and CLAY WITH NANNOFOSSILS AND SILT</p> <p>General Description: This core contains light olive gray (5Y 6/1) NANNOFOSSIL CLAY and olive gray (slightly pale red) (5Y 5/1) CLAY WITH NANNOFOSSILS AND SILT. From the base of the core up to Section 3, 80 cm, the sediments are colored dark by hydrotrolite.</p> <p>SS: Nannofossil clay</p> <p>SS: Clay with nannofossils and silt</p> <p>Red lutite</p>
1							lt gn GY		
2							lt ol GY		
3							mdk gn GY		
4							mlt br GY		
5							mlt br GY		

Site 1059 Hole B Core 4H

Cored 25.7-35.2 mbsf

1059B-4H



Site 1059 Hole B Core 5H

Cored 35.2-44.7 mbsf

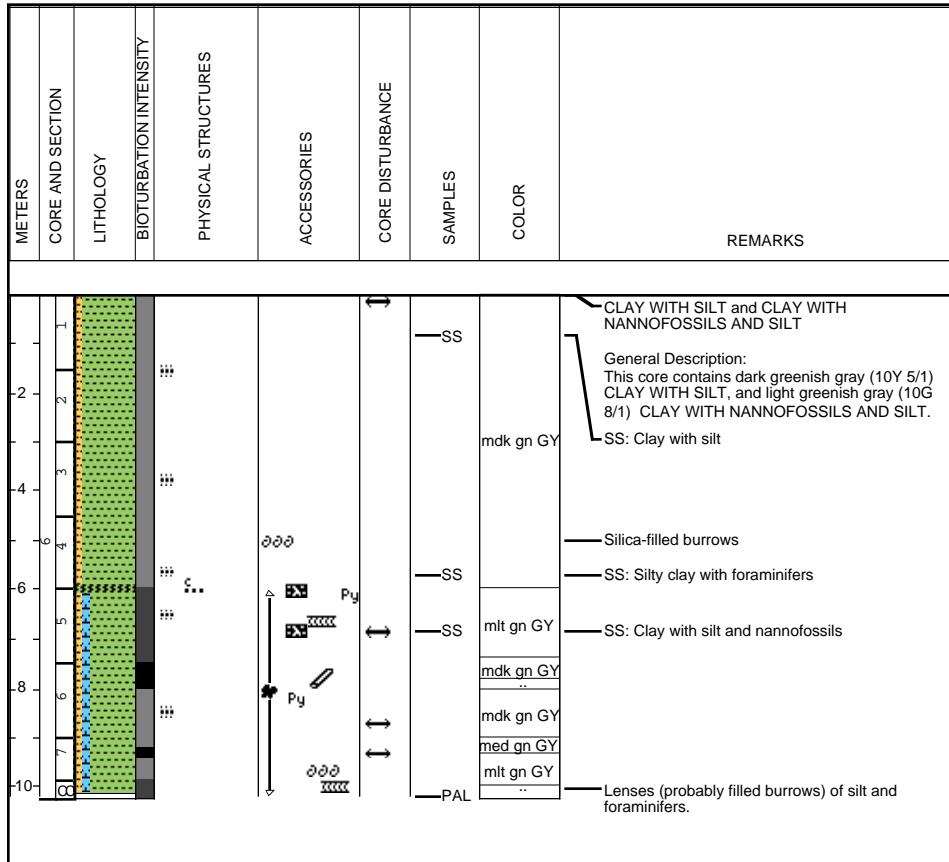
1059B-5H

METERS	CORE AND SECTION	LITHOLOGY	BIOTURBATION INTENSITY	PHYSICAL STRUCTURES	ACCESSORIES	CORE DISTURBANCE	SAMPLES	COLOR	REMARKS
1									<p>CLAY WITH SILT and CLAY WITH NANNOFOSSILS AND SILT</p> <p>General Description: The core contains dark brownish gray (5YR 4/1) CLAY WITH SILT, and dark greenish gray (10Y 5/1) CLAY WITH NANNOFOSSILS AND SILT.</p> <p>Red Lutite Clay with silt</p> <p>SS: Clay with nannofossils and silt</p>
2							mdk rd BR		
3							SS		
4							mt ol GY		
5									
6							mdk gn GY		
7							SS		
8									
9									
10							PAL		

Site 1059 Hole B Core 6H

Cored 44.7-54.2 mbsf

1059B-6H



Site 1059 Hole B Core 8H

Cored 63.7-73.2 mbsf

1059B-8H

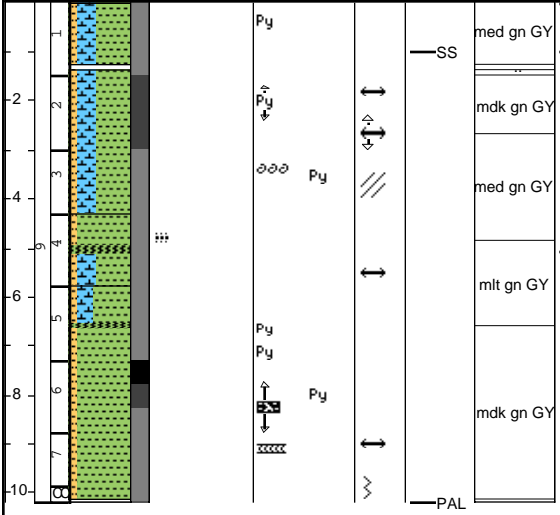
METERS	CORE AND SECTION	LITHOLOGY	BIOTURBATION INTENSITY	PHYSICAL STRUCTURES	ACCESSORIES	CORE DISTURBANCE	SAMPLES	COLOR	REMARKS
1									<p>CLAY WITH NANNOFOSSILS AND SILT, and NANNOFOSSIL CLAY</p> <p>General Description: This core contains greenish gray (5GY 6/1) CLAY WITH NANNOFOSSILS AND SILT, and light greenish gray (5GY 7/1) NANNOFOSSIL CLAY.</p> <p>Burrow-filled with coarser material</p> <p>SS: Nannofossil clay</p> <p>Red lutite</p> <p>SS: Nannofossil clay with silt</p> <p>SS: Clay with silt and nannofossils</p>
2								med gn GY	
3								SS	
4								mdk gn GY	
5								med ol GY	
6								SS	
7								SS	
8								med gn GY	
9									
10								PAL	

Site 1059 Hole B Core 9H

Cored 73.2-82.7 mbsf

1059B-9H

METERS	CORE AND SECTION	LITHOLOGY	BIOTURBATION INTENSITY	PHYSICAL STRUCTURES	ACCESSORIES	CORE DISTURBANCE	SAMPLES	COLOR	REMARKS
1									<p>NANNOFOSSIL CLAY WITH SILT and CLAY WITH SILT</p> <p>General Description: This core contains light greenish gray (5GY 6-7/1) NANNOFOSSIL CLAY WITH SILT, and dark greenish gray (10Y 5/1) CLAY WITH SILT. A siltier layer occurs in Section 4.</p> <p>SS: Nannofossil clay with silt</p> <p>Silt layer</p>
2							med gn GY		
3							mdk gn GY		
4							med gn GY		
5							mit gn GY		
6							mdk gn GY		
7									
8									
9									
10									



NANNOFOSSIL CLAY WITH SILT and CLAY WITH SILT

General Description:
This core contains light greenish gray (5GY 6-7/1) NANNOFOSSIL CLAY WITH SILT, and dark greenish gray (10Y 5/1) CLAY WITH SILT. A siltier layer occurs in Section 4.

SS: Nannofossil clay with silt

Silt layer

Site 1059 Hole B Core 10H

Cored 82.7-92.2 mbsf

1059B-10H

METERS	CORE AND SECTION	LITHOLOGY	BIOTURBATION INTENSITY	PHYSICAL STRUCTURES	ACCESSORIES	CORE DISTURBANCE	SAMPLES	COLOR	REMARKS
0									
1									
2									
3									
4									
5									
6									
7									
8									

CLAY WITH NANNOFOSSILS AND SILT, and NANNOFOSSIL OOZE

General Description:
 This core contains dark greenish gray (10Y 5/1) CLAY WITH NANNOFOSSILS AND SILT, and dark greenish gray (10Y 5/1) NANNOFOSSIL CLAY WITH SILT. Some siltier layers are scattered throughout, and in Section 5 at 139 cm, a laminated silt-clay bed occurs.

SS: Clay with silt and nannofossils

SS: Nannofossil clay

SS: Clay with silt

Silt and clay lamina (ca. 1 mm), sharp base and gradational contact to region above

Slightly reddish

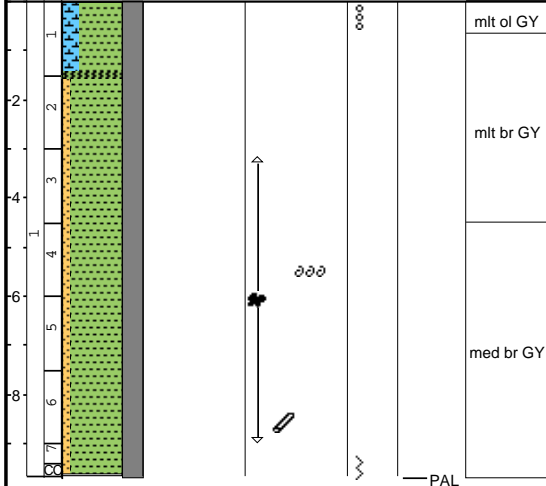
SS: Nannofossil clay with silt

Site 1059 Hole C Core 1H

Cored 0.0-9.5 mbsf

1059C-1H

METERS	CORE AND SECTION	LITHOLOGY	BIOTURBATION INTENSITY	PHYSICAL STRUCTURES	ACCESSORIES	CORE DISTURBANCE	SAMPLES	COLOR	REMARKS
0.0									<p>NANNOFOSSIL CLAY and CLAY WITH SILT</p> <p>General Description: This core contains a medium light olive green (5Y 6/1) NANNOFOSSIL CLAY, and a medium brownish gray (7.5YR 5/2) CLAY WITH SILT. Black-stained bands from pyritized burrows are common in the lower half of the core.</p>
0.1								mt ol GY	
1.0									<p>Burrow filled with silty clay with foraminifers</p>
2.0								mt br GY	
3.0									<p>PAL</p>
4.0								med br GY	
5.0									
6.0									
7.0									
8.0									
9.5									

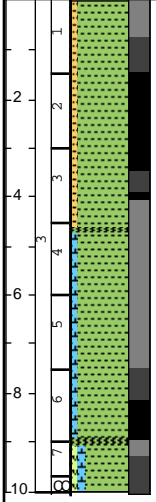


Site 1059 Hole C Core 3H

Cored 19.0-28.5 mbsf

1059C-3H

METERS	CORE AND SECTION	LITHOLOGY	BIOTURBATION INTENSITY	PHYSICAL STRUCTURES	ACCESSORIES	CORE DISTURBANCE	SAMPLES	COLOR	REMARKS
1									<p>CLAY WITH SILT and CLAY WITH NANNOFOSSILS</p> <p>General Description: This core contains dark greenish gray (10Y 5/1) CLAY WITH SILT, and a medium greenish gray (5GY 6/1) CLAY WITH NANNOFOSSILS, and in Section 7 CLAY WITH NANNOFOSSILS AND DIATOMS.</p> <p>SS: Clay with nannofossils and diatoms</p>
2							mdk gn GY		
3									
4							med gn GY		
5									
6							mt gn GY		
7									
8									
9									
10									



SS
PAL

Site 1059 Hole C Core 4H

Cored 28.5-38.0 mbsf

1059C-4H

METERS	CORE AND SECTION	LITHOLOGY	BIOTURBATION INTENSITY	PHYSICAL STRUCTURES	ACCESSORIES	CORE DISTURBANCE	SAMPLES	COLOR	REMARKS
1									<p>NANNOFOSSIL CLAY and CLAY WITH SILT</p> <p>General Description: This core contains greenish gray (5GY 6/1) NANNOFOSSIL CLAY, and reddish brown (10R 4/6) CLAY WITH SILT. Black stains from pyritized burrows are common throughout the core, except Section 3 and 4.</p> <p>Red lutite</p>
2							mt gn GY		
3							med gn GY		
4							mt gn GY		
5							med gn GY		
6							gn GY rd BR		
7							rd BR		
8									
9									
10									

Site 1059 Hole C Core 6H

Cored 47.5-57.0 mbsf

1059C-6H

METERS	CORE AND SECTION	LITHOLOGY	BIOTURBATION INTENSITY	PHYSICAL STRUCTURES	ACCESSORIES	CORE DISTURBANCE	SAMPLES	COLOR	REMARKS
1									<p>CLAY WITH NANNOFOSSILS, CLAY WITH NANNOFOSSILS AND SILT, and CLAY WITH SILT</p> <p>General Description: This core contains greenish gray (5GY 6/1) CLAY WITH NANNOFOSSILS and greenish gray (5GY 5/1) CLAY WITH NANNOFOSSILS AND SILT and CLAY WITH SILT.</p>
2							lt gn GY		
3							gn GY		
4							mt gn GY		
5							gn GY		
6							mt gn GY		
7							gn GY		
8							gn GY		
9							gn GY		
10							gn GY		
							SS	SS: Clay with silt	
							PAL		

Site 1059 Hole C Core 7H

Cored 57.0-66.5 mbsf

1059C-7H

METERS	CORE AND SECTION	LITHOLOGY	BIOTURBATION INTENSITY	PHYSICAL STRUCTURES	ACCESSORIES	CORE DISTURBANCE	SAMPLES	COLOR	REMARKS
1									CLAY, CLAY WITH SILT, and NANNOFOSSIL CLAY
2									General Description: This core contains greenish gray (5GY 5/1) CLAY WITH SILT CLAY, and CLAY WITH SILT AND NANNOFOSSILS, and light greenish gray (5GY 8/1) NANNOFOSSIL CLAY
3								mdk gn GY	Slight reddish banding
4									
5									Green and red diagenetic bands
6								mlt ol GY	
7								mlt gn GY	
8								gn GY	Light bluish gray clay alternating with gray silt
9									
10									

Py

Site 1059 Hole C Core 8H

Cored 66.5-76.0 mbsf

1059C-8H

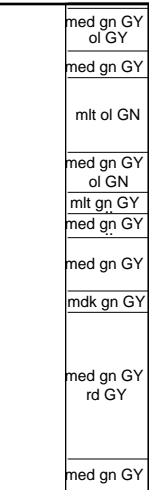
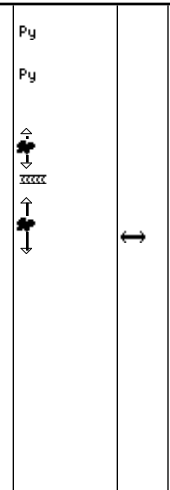
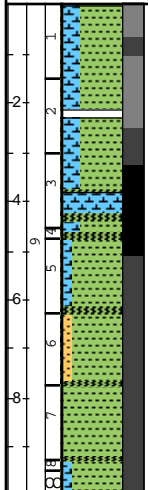
METERS	CORE AND SECTION	LITHOLOGY	BIOTURBATION INTENSITY	PHYSICAL STRUCTURES	ACCESSORIES	CORE DISTURBANCE	SAMPLES	COLOR	REMARKS
1									<p>NANNOFOSSIL CLAY and CLAY</p> <p>General Description: This core contains greenish gray and medium light greenish gray (5G 6-8/1) NANNOFOSSIL CLAY, and dark greenish gray (5G 4/1) CLAY. In addition, in Sections 3 and 4, reddish brown clay with silt is observed.</p> <p>Red lutite</p> <p>PAL</p>
2							mlt gn GY		
3							gn GY		
4							rd BR		
5							mlt rd BR		
6							med gn GY		
7							mdk gn GY		
8									
9									
10							med gn GY		

Site 1059 Hole C Core 9H

Cored 76.0-85.5 mbsf

1059C-9H

METERS	CORE AND SECTION	LITHOLOGY	BIOTURBATION INTENSITY	PHYSICAL STRUCTURES	ACCESSORIES	CORE DISTURBANCE	SAMPLES	COLOR	REMARKS
0									<p>NANNOFOSSIL CLAY and CLAY</p> <p>General Description: This core contains greenish gray (5G 6/1) NANNOFOSSIL CLAY, CLAY WITH NANNOFOSSILS and CLAY WITH SILT, and dark greenish gray (5G 5/1) CLAY. Some reddish colored beds occur in Sections 6 and 7.</p> <p>Red lutite</p> <p>Green and red banding</p>
1								med gn GY ol GY	
2								med gn GY	
3								mlt ol GN	
4								med gn GY ol GN	
5								mlt gn GY	
6								med gn GY	
7								mdk gn GY	
8								med gn GY rd GY	
9								med gn GY	



med gn GY
ol GY

med gn GY

mlt ol GN

med gn GY
ol GN

mlt gn GY

med gn GY

med gn GY

mdk gn GY

med gn GY
rd GY

med gn GY

Site 1059 Hole C Core 10H

Cored 85.5-95.0 mbsf

1059C-10H

METERS	CORE AND SECTION	LITHOLOGY	BIOTURBATION INTENSITY	PHYSICAL STRUCTURES	ACCESSORIES	CORE DISTURBANCE	SAMPLES	COLOR	REMARKS
1									<p>CLAY WITH SILT and NANNOFOSSIL CLAY</p> <p>General Description: This core contains dark greenish gray (5GY 4/1) CLAY WITH SILT, and greenish gray (5GY 6/1) NANNOFOSSIL CLAY, olive gray CLAY, and CLAY WITH NANNOFOSSILS.</p> <p>Subtle red and green banding</p> <p>Green and red banding</p> <p>Red lutite</p> <p>Biosilica-lined burrows</p>
2							mdk gn GY		
3							med ol GY		
4							med gn GY		
5							mt gn GY		
6							mt gn GY of GY		
7							mt gn GY of GN		
8									
9									
10									