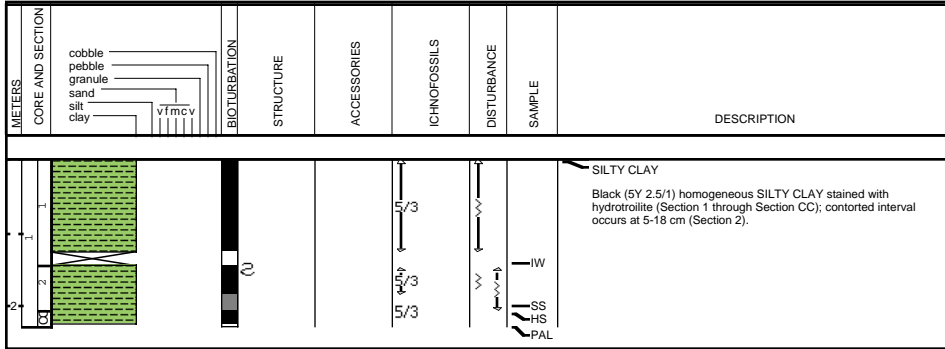


Site 1072 Hole A Core 1R

Cored 0.0-7.5 mbsf

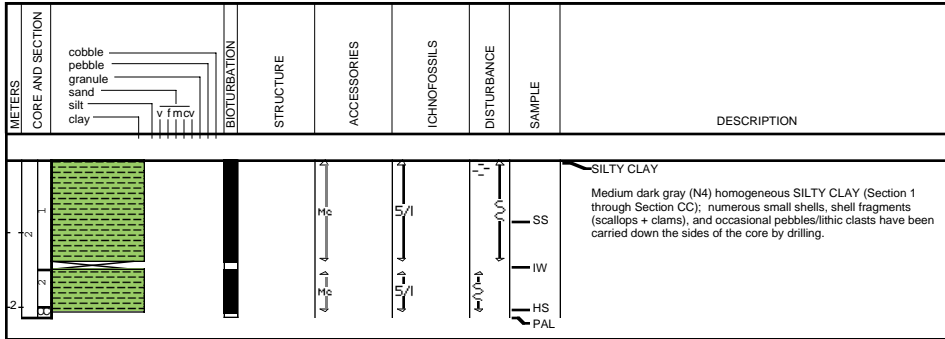
1072A-1R

1072A-2R



Site 1072 Hole A Core 2R

Cored 7.5-17.0 mbsf

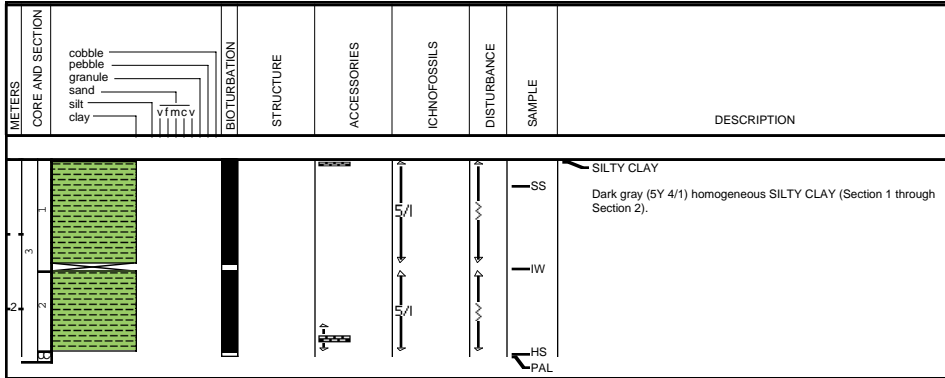


Site 1072 Hole A Core 3R

Cored 17.0-26.7 mbsf

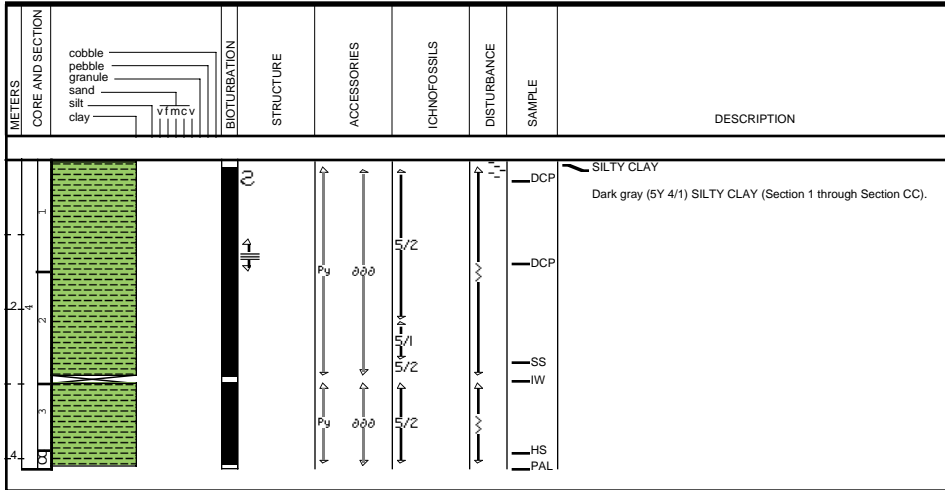
1072A-3R

1072A-4R



Site 1072 Hole A Core 4R

Cored 26.7-36.3 mbsf



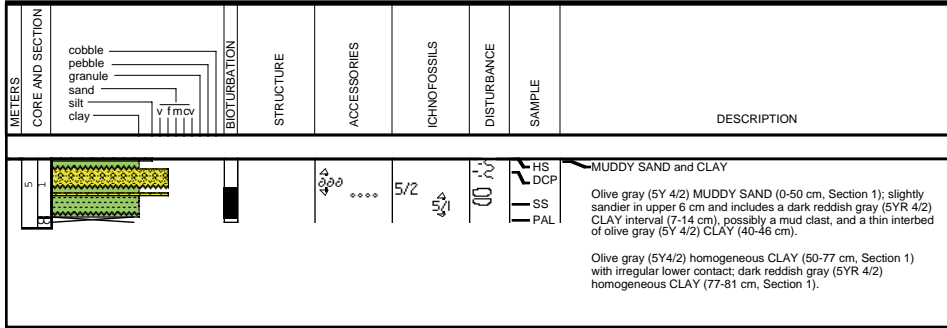
Site 1072 Hole A Core 5R

Cored 36.3-46.0 mbsf

1072A-5R

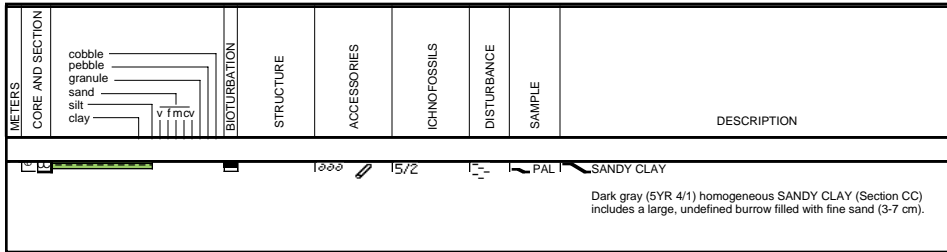
1072A-6R

1072A-7R



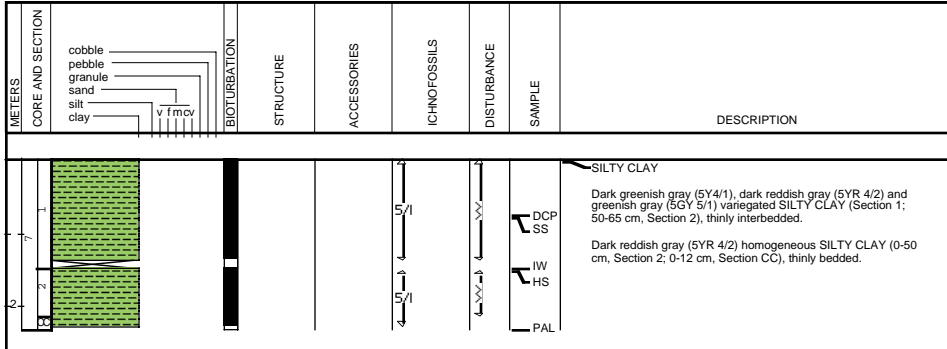
Site 1072 Hole A Core 6R

Cored 46.0-51.0 mbsf



Site 1072 Hole A Core 7R

Cored 51.0-56.0 mbsf

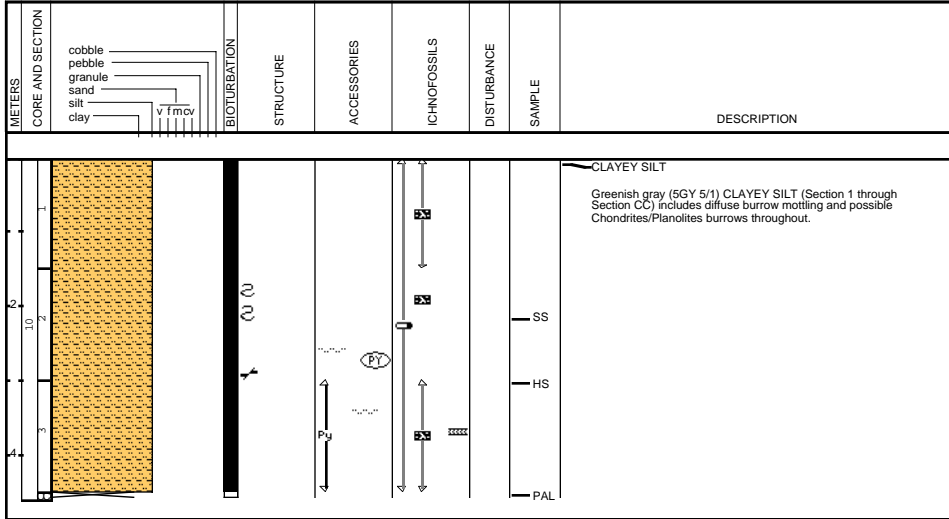


Site 1072 Hole A Core 10R

Cored 65.7-70.7 mbsf

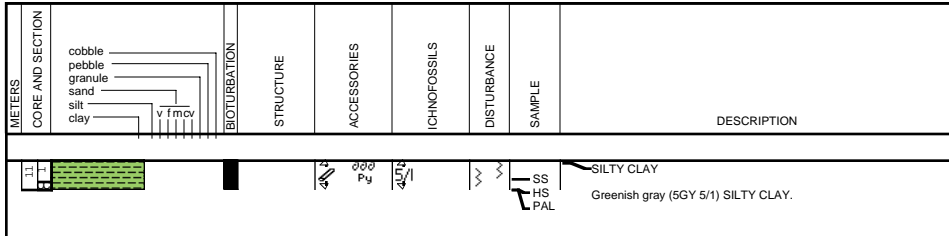
1072A-10R

1072A-11R



Site 1072 Hole A Core 11R

Cored 70.7-75.2 mbsf



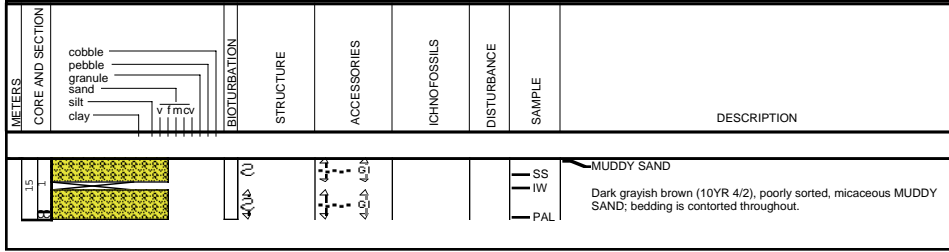
1072A-12R NO RECOVERY

1072A-13R NO RECOVERY

1072A-14R NO RECOVERY

Site 1072 Hole A Core 15R

Cored 89.7-94.0 mbsf



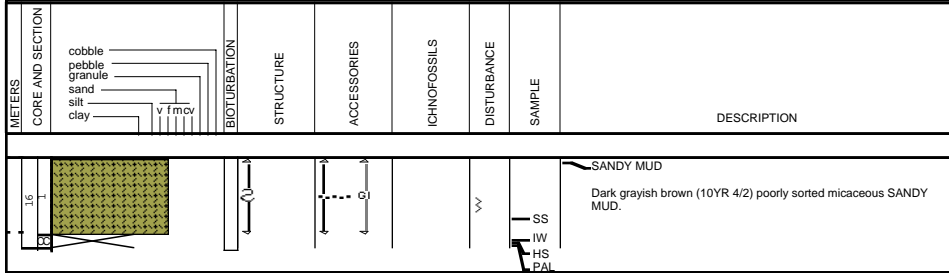
1072A-15R

1072A-16R

1072A-17R

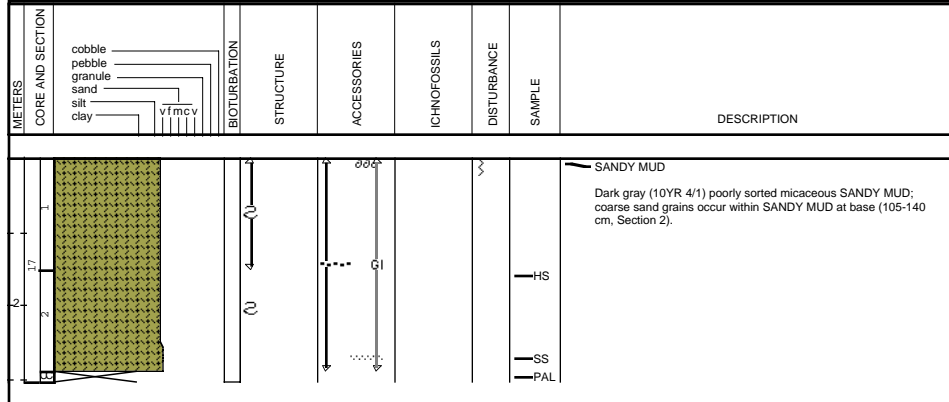
Site 1072 Hole A Core 16R

Cored 94.0-99.0 mbsf



Site 1072 Hole A Core 17R

Cored 99.0-103.4 mbsf

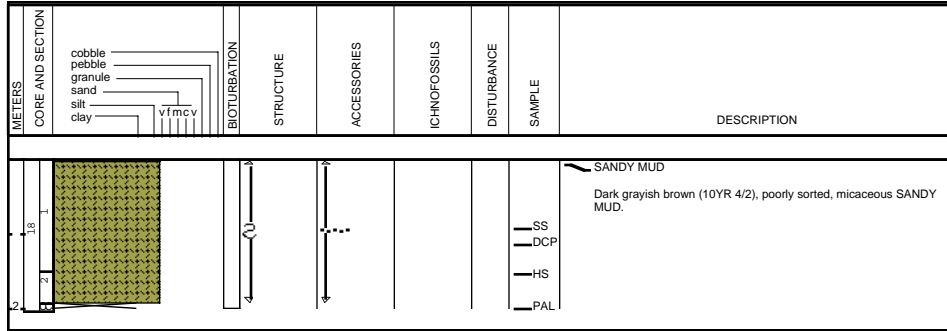


Site 1072 Hole A Core 18R

Cored 103.4-108.4 mbsf

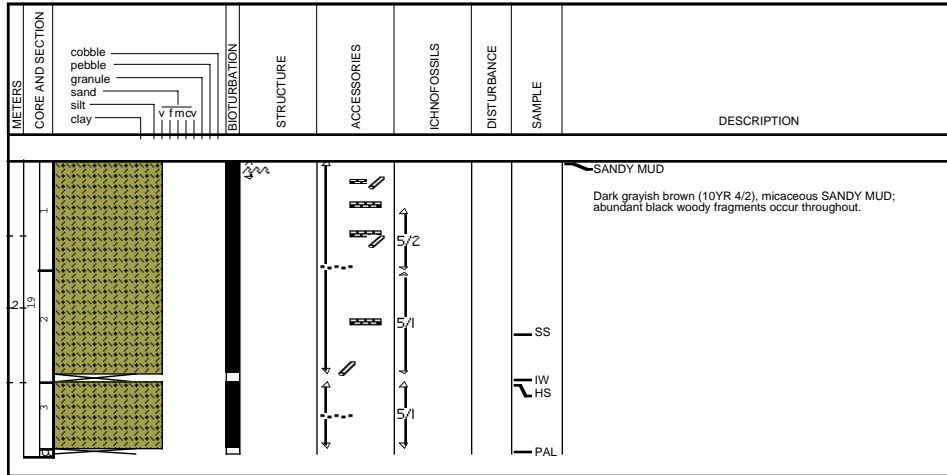
1072A-18R

1072A-19R



Site 1072 Hole A Core 19R

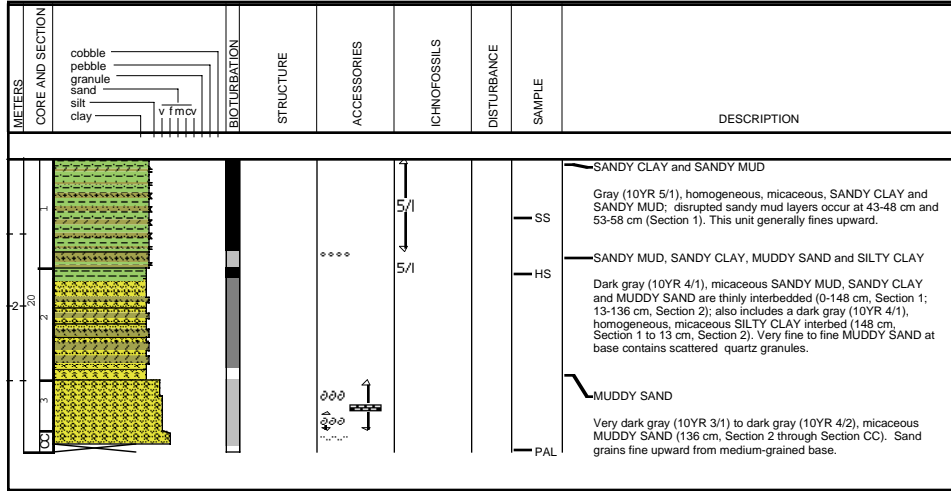
Cored 108.4-112.9 mbsf



Site 1072 Hole A Core 20R

Cored 112.9-122.4 mbsf

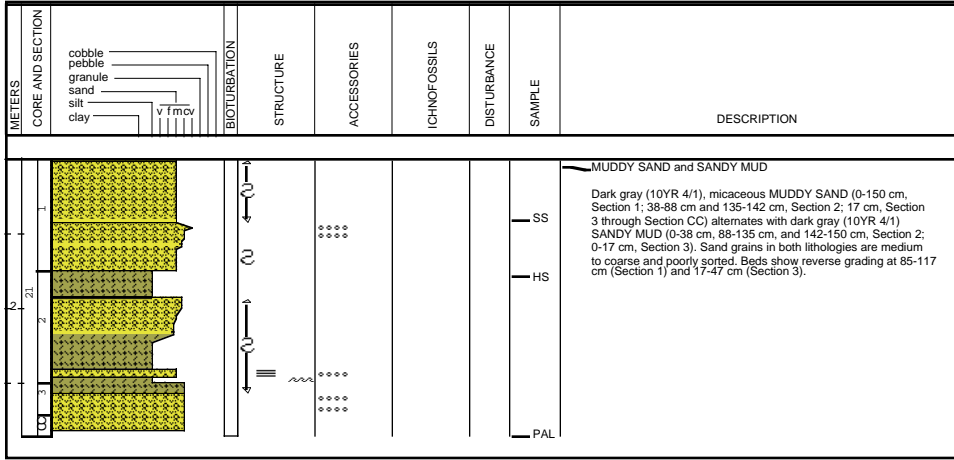
1072A-20R



Site 1072 Hole A Core 21R

Cored 122.4-127.4 mbsf

1072A-21R

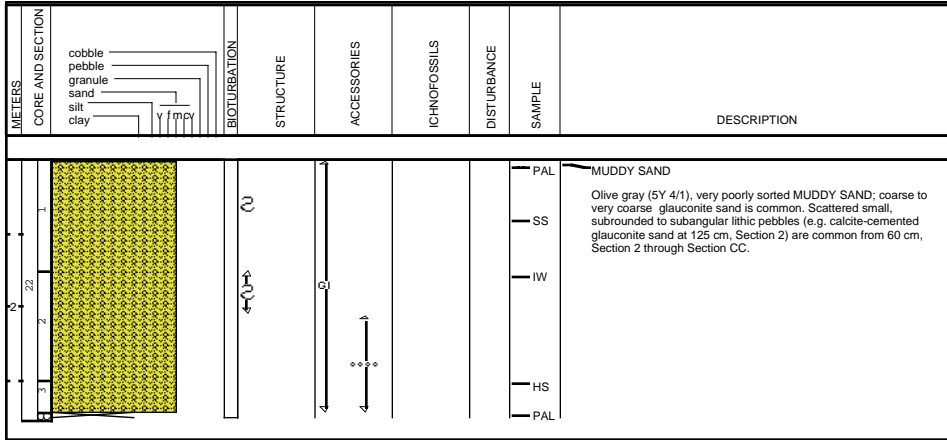


Site 1072 Hole A Core 22R

Cored 127.4-131.9 mbsf

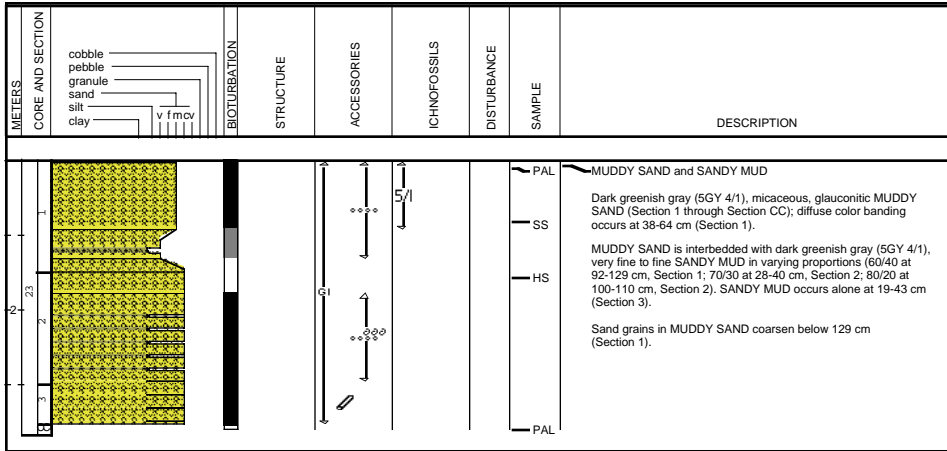
1072A-22R

1072A-23R



Site 1072 Hole A Core 23R

Cored 131.9-136.9 mbsf

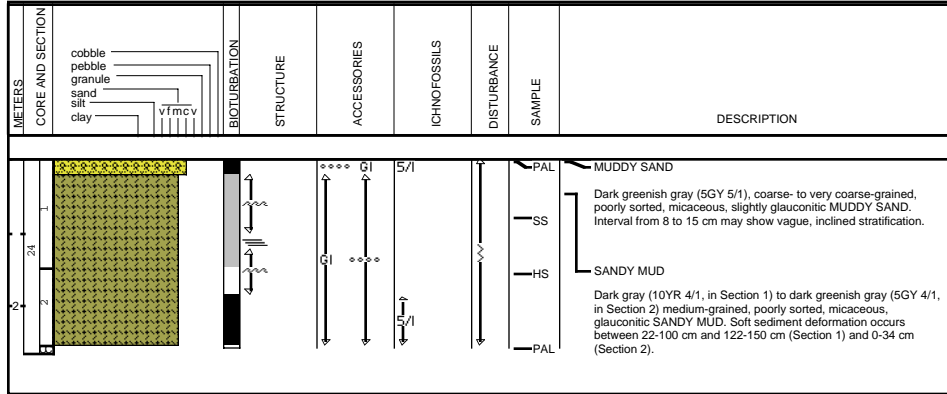


Site 1072 Hole A Core 24R

Cored 136.9-141.3 mbsf

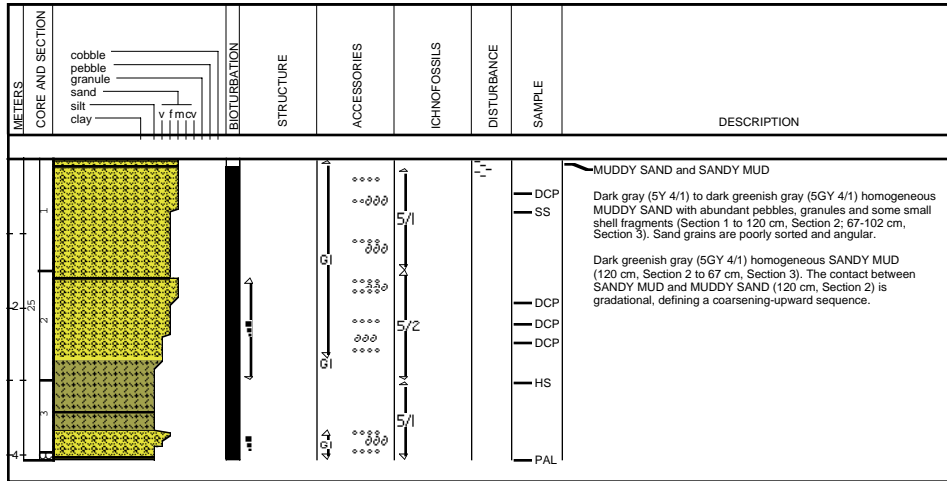
1072A-24R

1072A-25R



Site 1072 Hole A Core 25R

Cored 141.3-146.3 mbsf

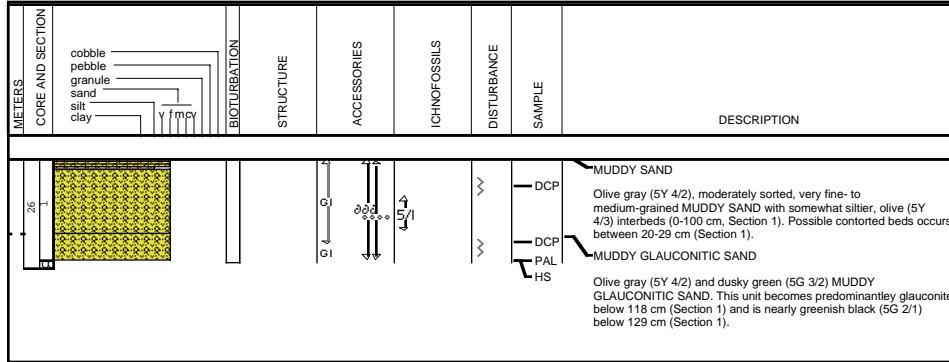


Site 1072 Hole A Core 26R

Cored 146.3-150.9 mbsf

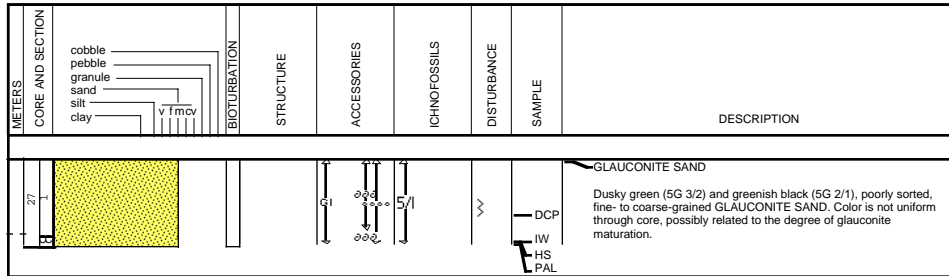
1072A-26R

1072A-27R



Site 1072 Hole A Core 27R

Cored 150.9-155.9 mbsf



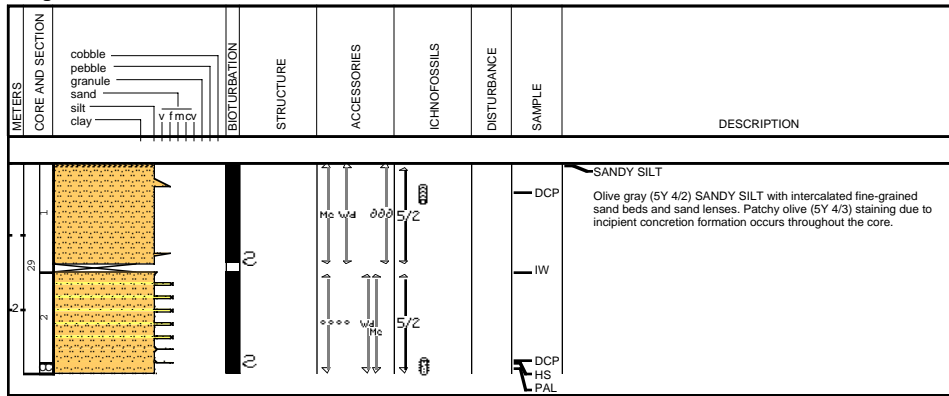
1072A-28R NO RECOVERY

1072A-29R

1072A-30R

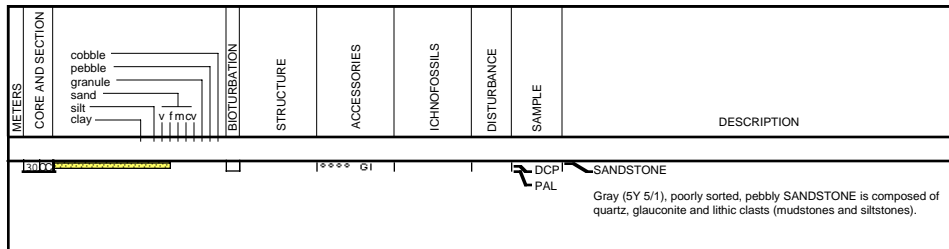
Leg 174 Site 1072 Hole A Core 29R

Cored 160.3-165.3 mbsf



Site 1072 Hole A Core 30R

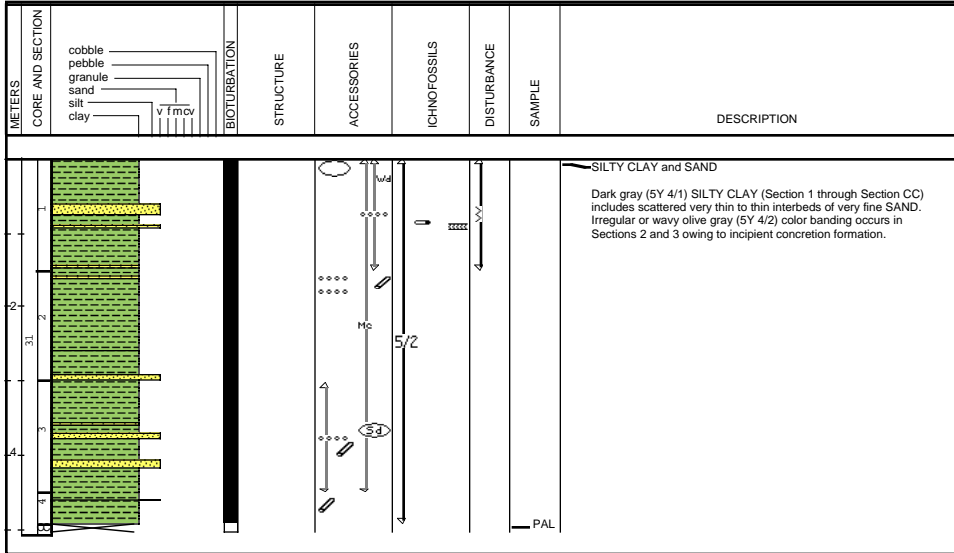
Cored 165.3-169.8 mbsf



Site 1072 Hole A Core 31R

Cored 169.8-174.8 mbsf

1072A-31R



Site 1072 Hole A Core 32R

Cored 174.8-179.3 mbsf

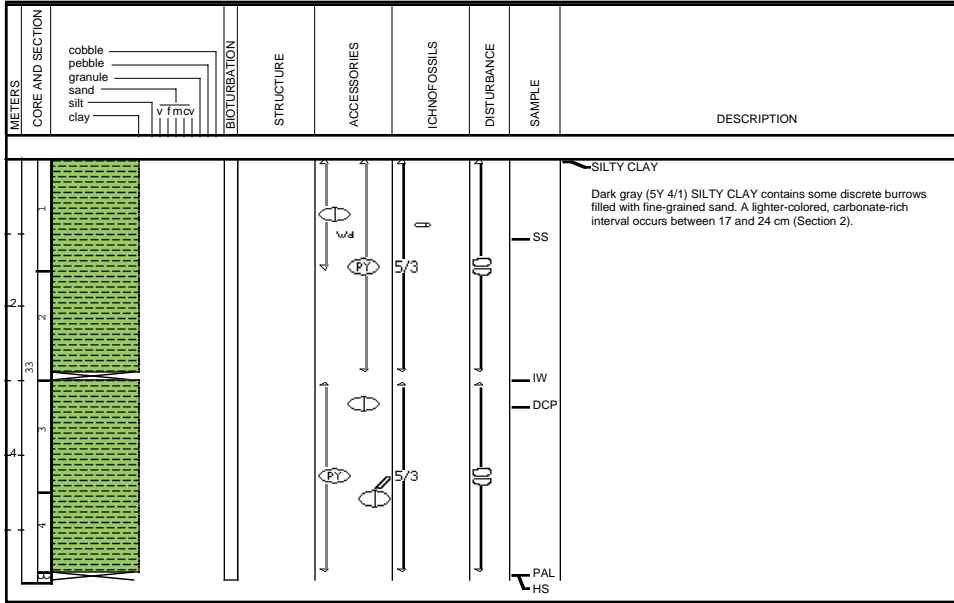
1072A-32R

METERS	CORE AND SECTION	PICTURE	STRUCTURE	ACCESSORIES	ICHNOFOSSILS	DISTURBANCE	SAMPLE	DESCRIPTION
0								
1								<p>SILTY CLAY and SANDY SILT</p> <p>Variegated (dark gray, 5Y 4/1; olive, 5Y 5/3; black, 5Y 2.5/2)</p> <p>SILTY CLAY with scattered thin interbeds of SANDY SILT (Sections 1 and 2). Lighter olive color could be due to incipient concretion formation.</p> <p>Variegated (dark gray, 5Y 4/1; olive, 5Y 5/3; black, 5Y 2.5/2)</p> <p>SANDY SILT occurs alone in Section 3.</p>
2								
3								
4								
5								
6								
7								
8								
9								
10								
11								
12								
13								
14								
15								
16								
17								
18								
19								
20								
21								
22								
23								
24								
25								
26								
27								
28								
29								
30								
31								
32								
33								
34								
35								
36								
37								
38								
39								
40								
41								
42								
43								
44								
45								
46								
47								
48								
49								
50								
51								
52								
53								
54								
55								
56								
57								
58								
59								
60								
61								
62								
63								
64								
65								
66								
67								
68								
69								
70								
71								
72								
73								
74								
75								
76								
77								
78								
79								
80								
81								
82								
83								
84								
85								
86								
87								
88								
89								
90								
91								
92								
93								
94								
95								
96								
97								
98								
99								
100								

Site 1072 Hole A Core 33R

Cored 179.3-184.3 mbsf

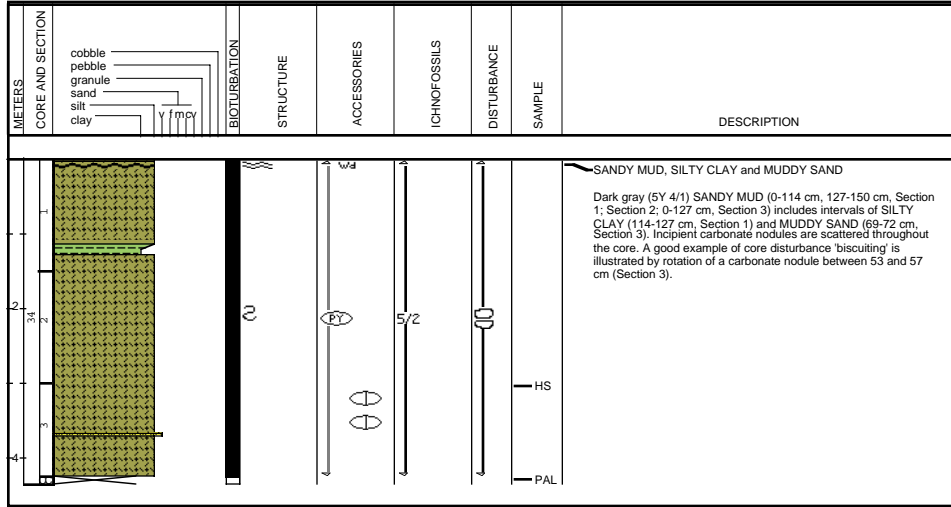
1072A-33R



Site 1072 Hole A Core 34R

Cored 184.3-188.6 mbsf

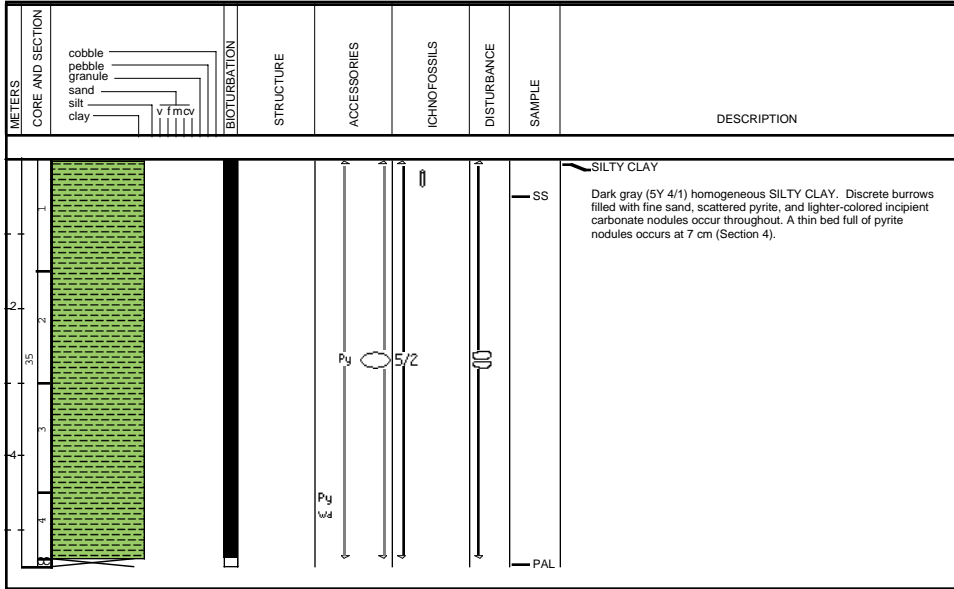
1072A-34R



Site 1072 Hole A Core 35R

Cored 188.6-193.6 mbsf

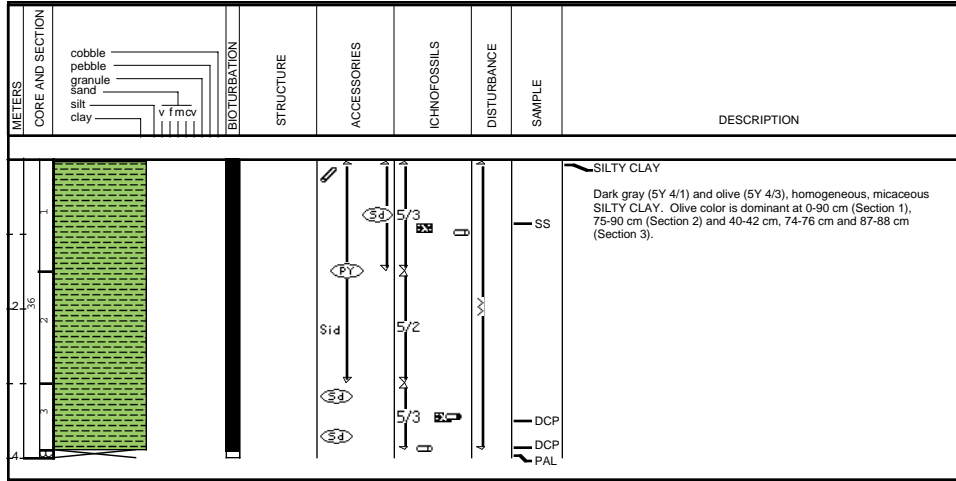
1072A-35R



Site 1072 Hole A Core 36R

Cored 193.6-197.9 mbsf

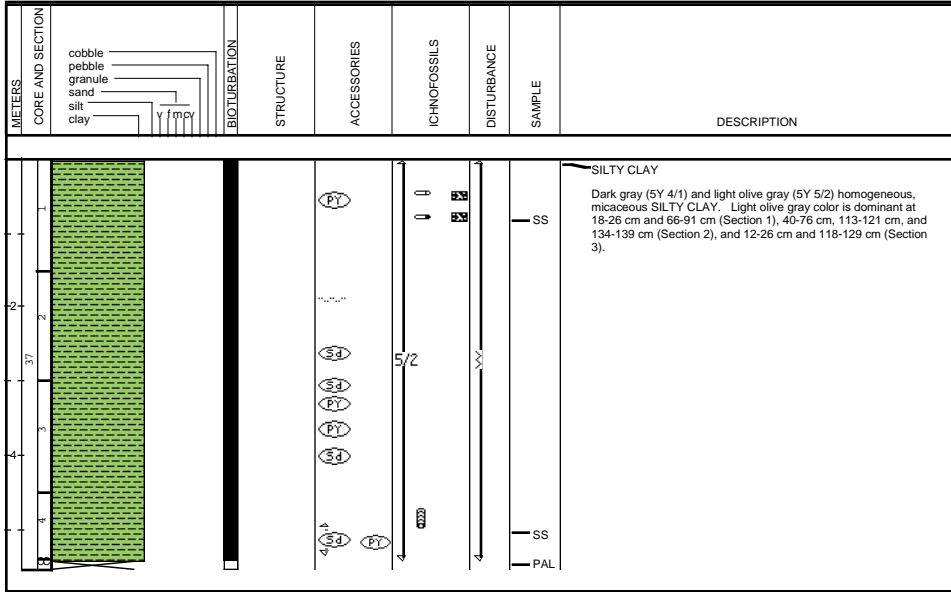
1072A-36R



Site 1072 Hole A Core 37R

Cored 197.9-202.9 mbsf

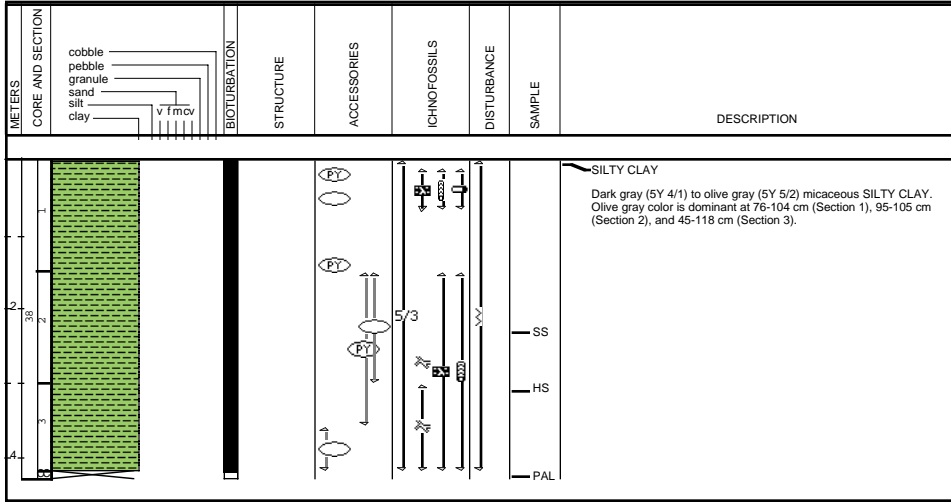
1072A-37R



Site 1072 Hole A Core 38R

Cored 202.9-207.3 mbsf

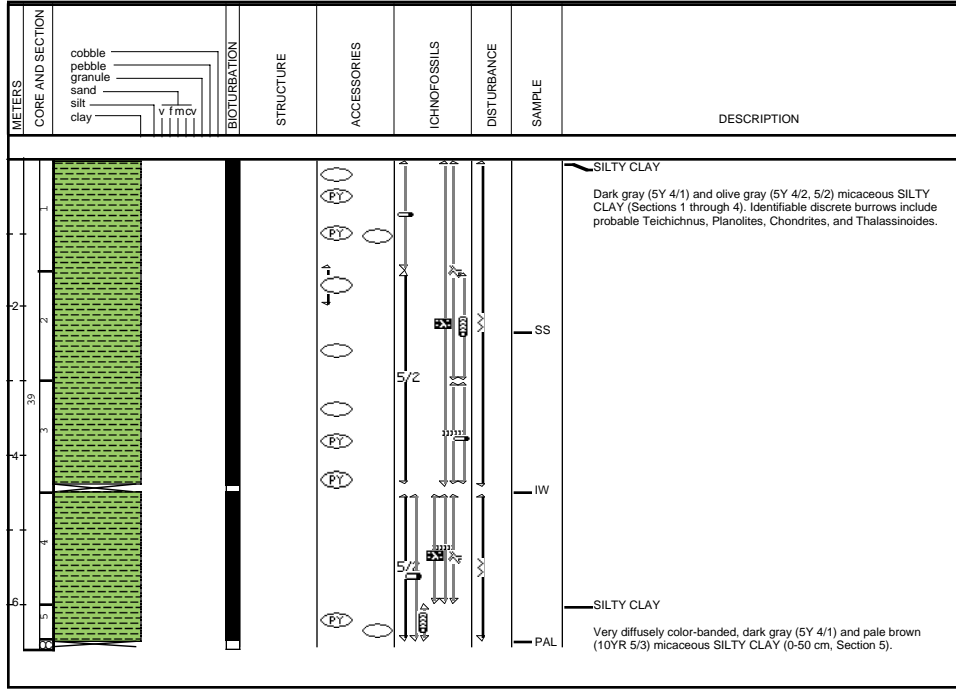
1072A-38R



Site 1072 Hole A Core 39R

Cored 207.3-212.3 mbsf

1072A-39R



Site 1072 Hole A Core 40R

Cored 212.3-216.7 mbsf

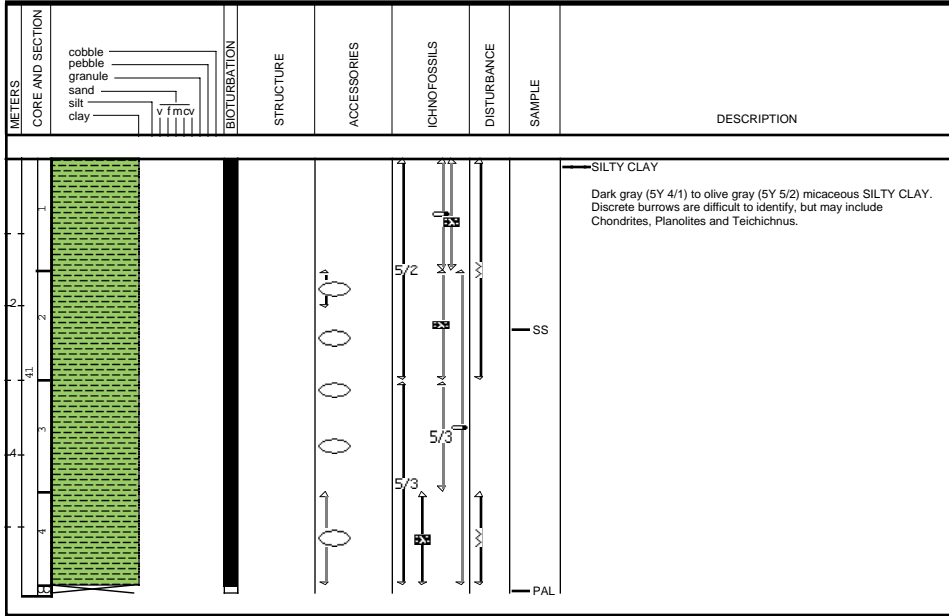
1072A-40R

METERS	CORE AND SECTION	BIOTURBATION	STRUCTURE	ACCESSORIES	ICHNOFOSSILS	DISTURBANCE	SAMPLE	DESCRIPTION
							<p>SS HS PAL</p>	<p>SILTY CLAY</p> <p>Dark gray (5Y 4/1) SILTY CLAY with rare quartz pebbles. Lighter colored zones (greenish brown, 10YR 5/2) throughout the core are caused by carbonate layers and incipient nodules.</p>

Site 1072 Hole A Core 41R

Cored 216.7-221.7 mbsf

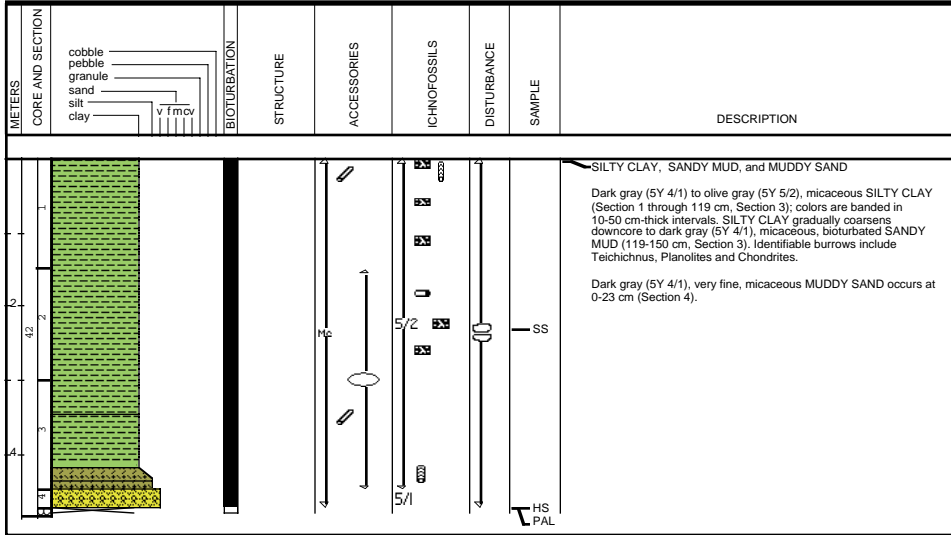
1072A-41R



Site 1072 Hole A Core 42R

Cored 221.7-226.1 mbsf

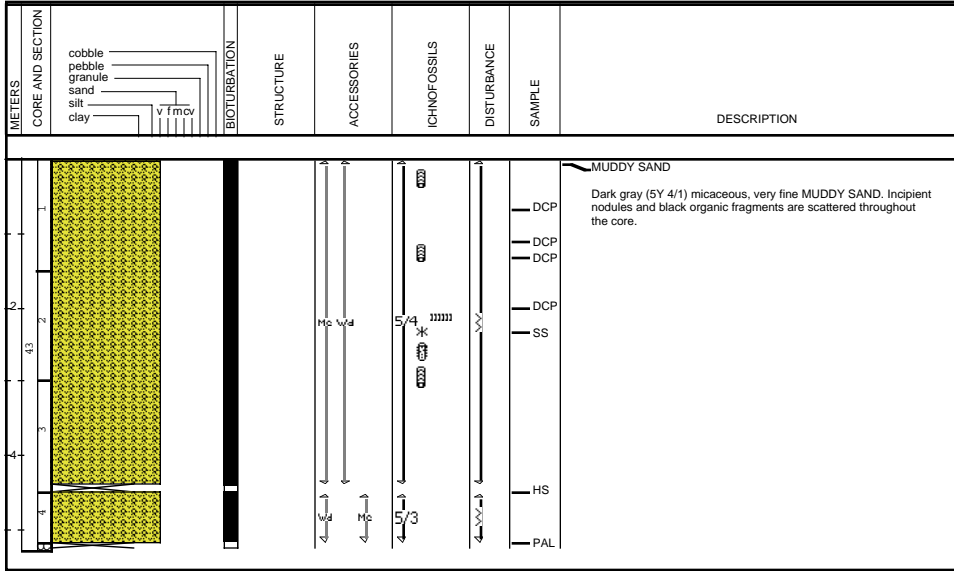
1072A-42R



Site 1072 Hole A Core 43R

Cored 226.1-231.1 mbsf

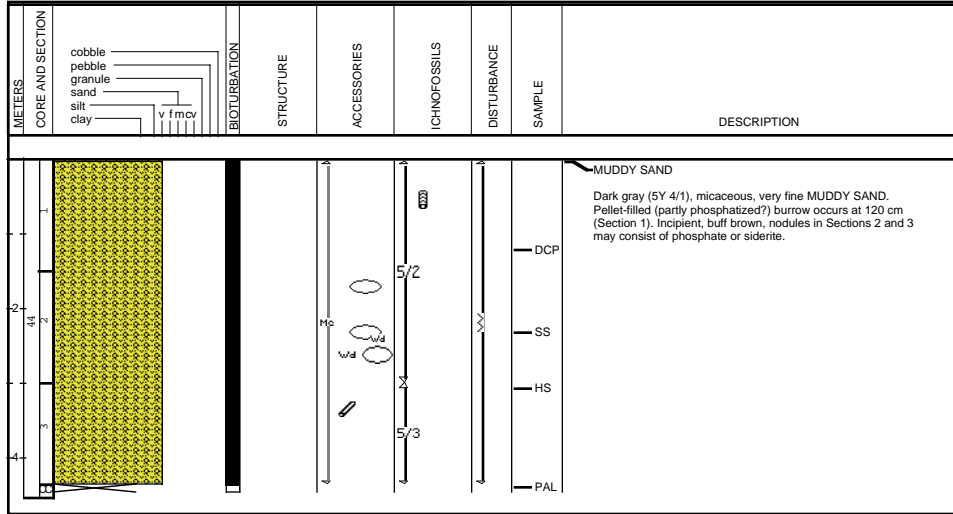
1072A-43R



Site 1072 Hole A Core 44R

Cored 231.1-235.5 mbsf

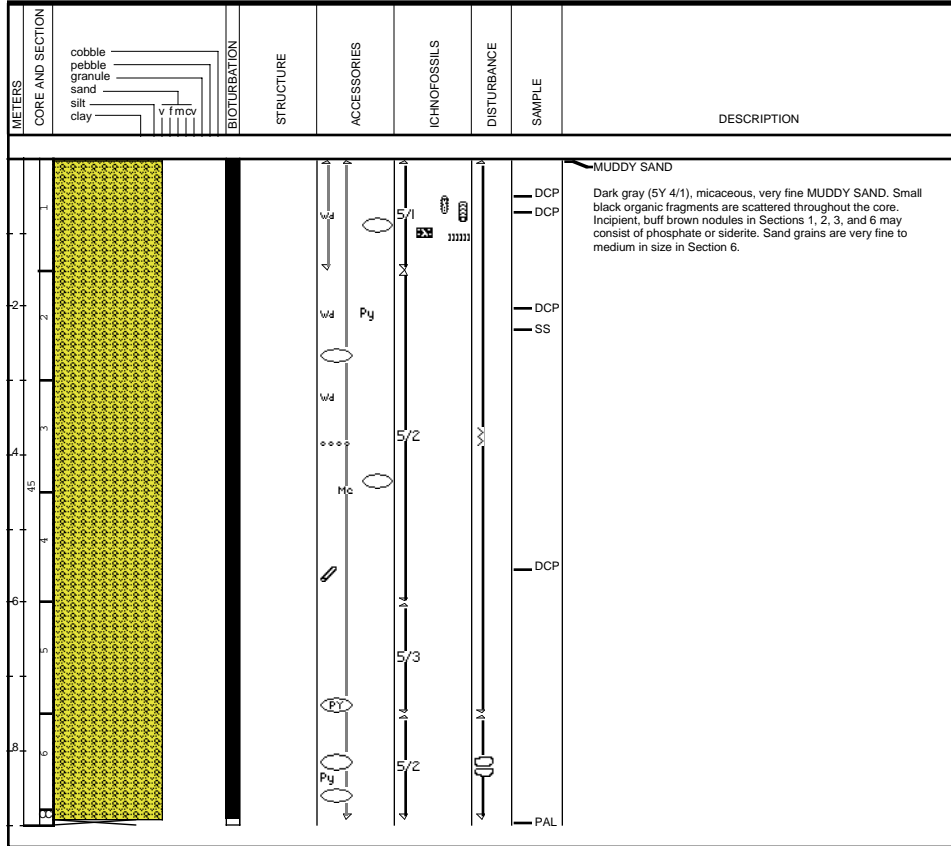
1072A-44R

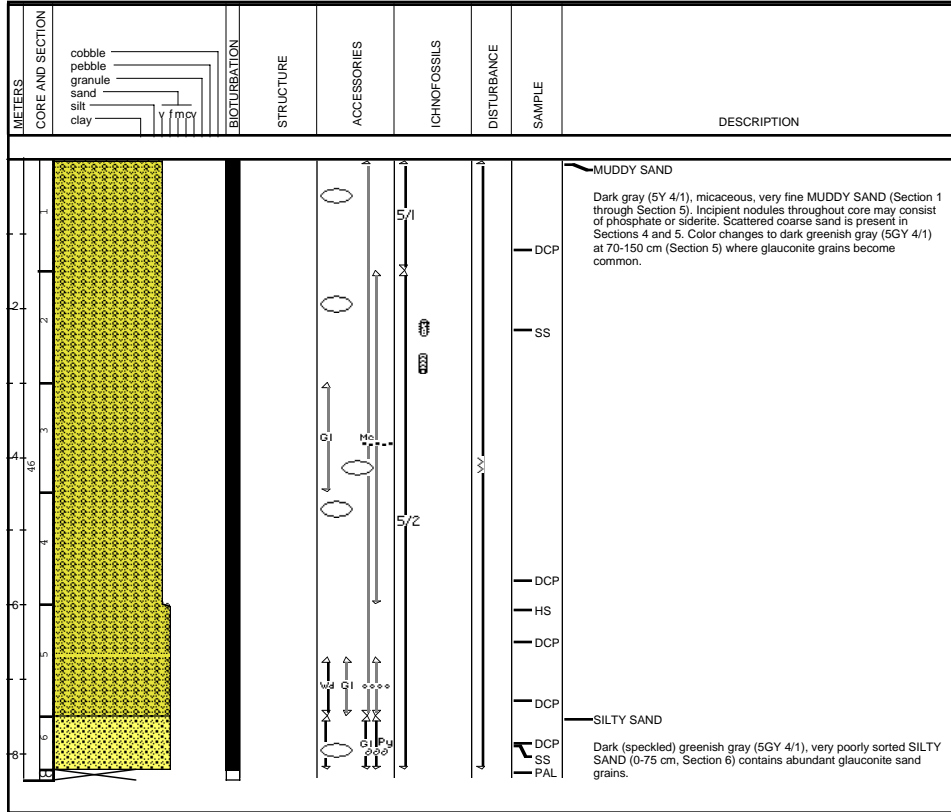


Site 1072 Hole A Core 45R

Cored 235.5-244.7 mbsf

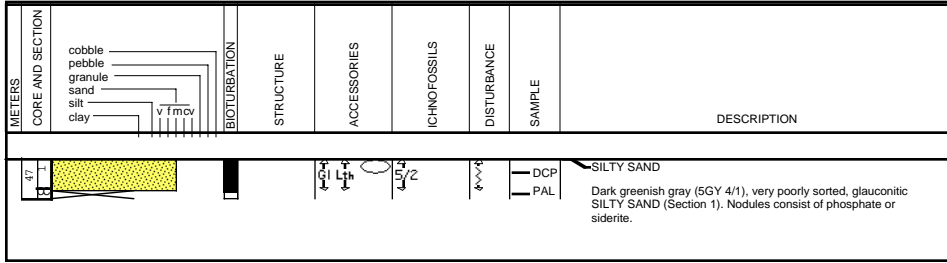
1072A-45R





Site 1072 Hole A Core 47R

Cored 254.2-263.7 mbsf



1072A-47R

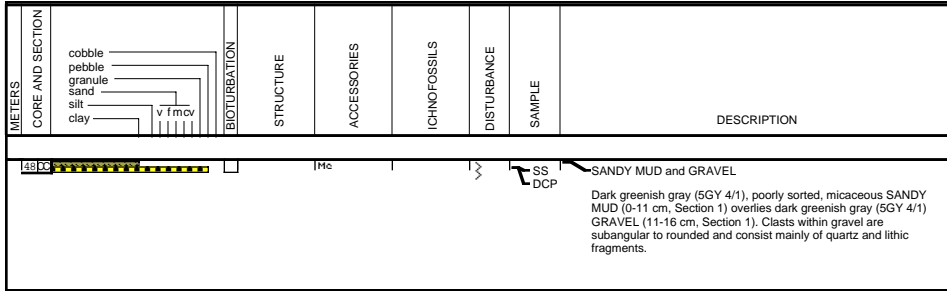
1072A-48R

1072A-49R

1072A-50R

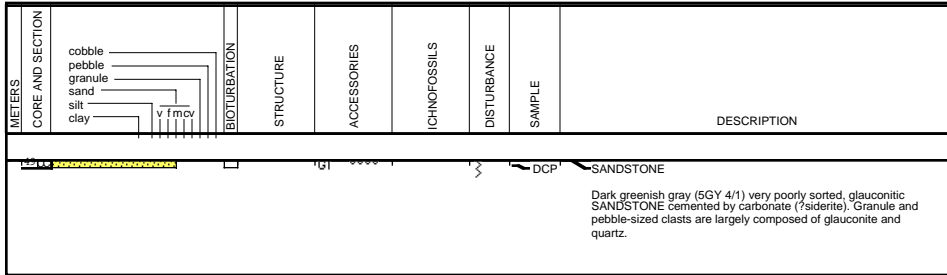
Site 1072 Hole A Core 48R

Cored 263.7-268.7 mbsf



Site 1072 Hole A Core 49R

Cored 268.7-273.3 mbsf



Site 1072 Hole A Core 50R

Cored 273.3-278.3 mbsf

