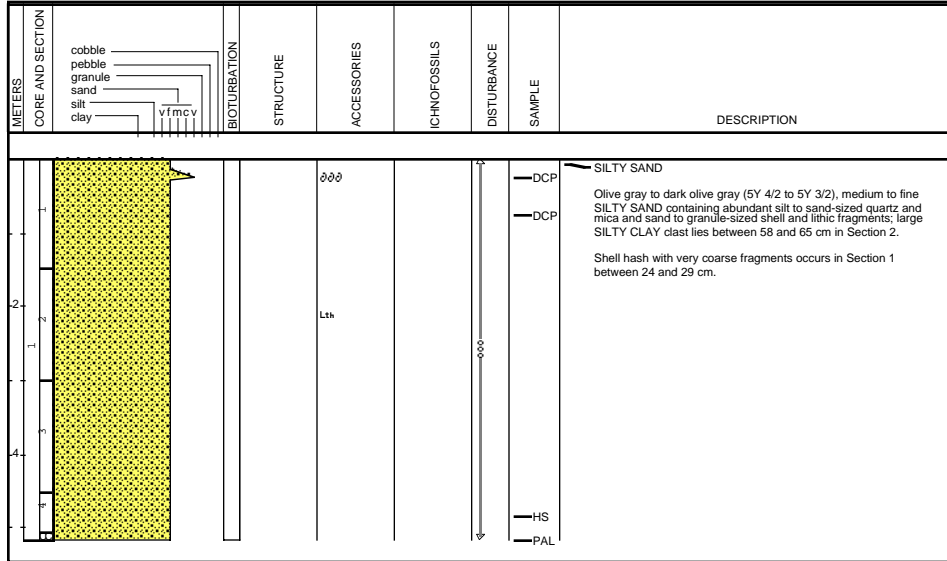


Site 1071 Hole A Core 1H

Cored 0.0-5.1 mbsf

1071A-1H

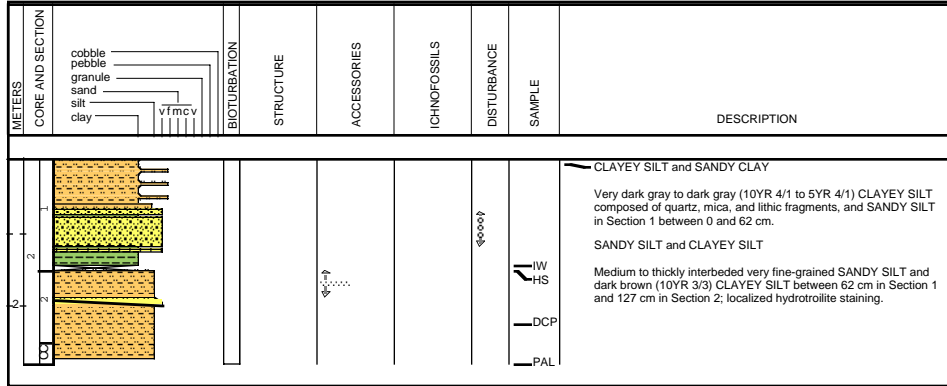


Site 1071 Hole A Core 2H

Cored 5.1-7.9 mbsf

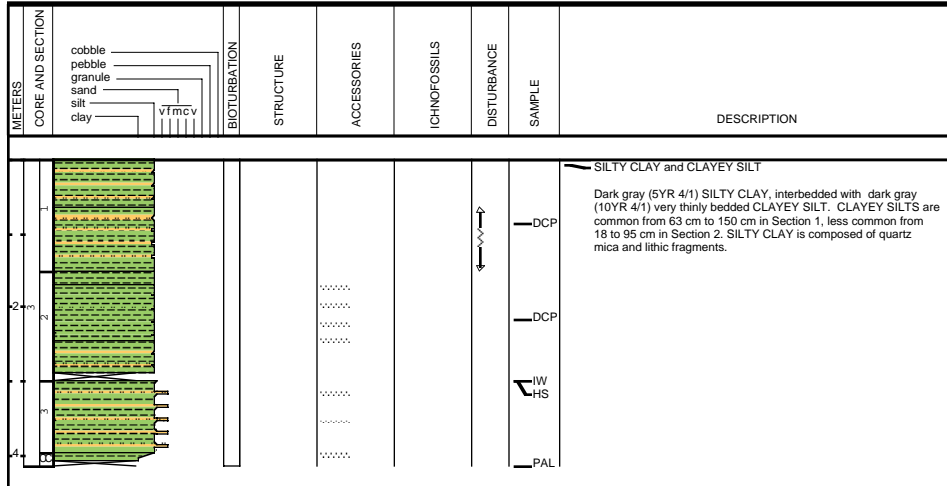
1071A-2H

1071A-3H



Site 1071 Hole A Core 3H

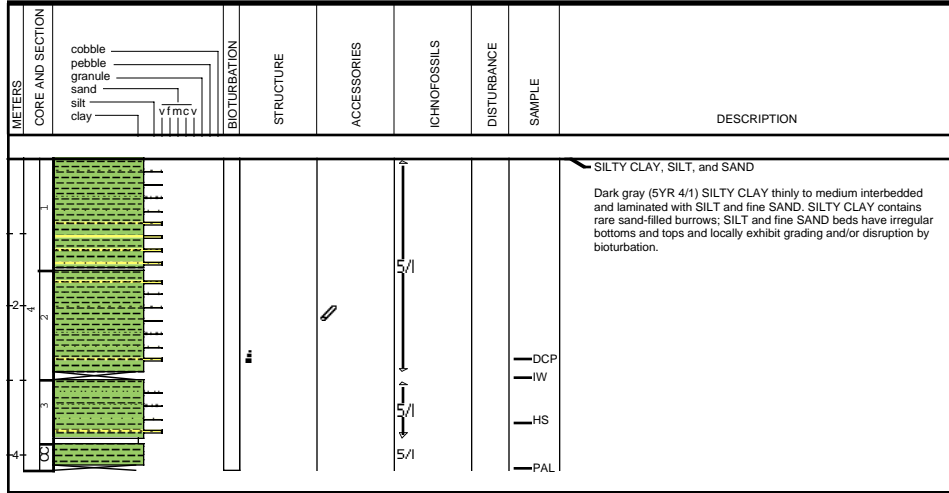
Cored 7.9-12.0 mbsf



Site 1071 Hole A Core 4H

Cored 12.0-16.2 mbsf

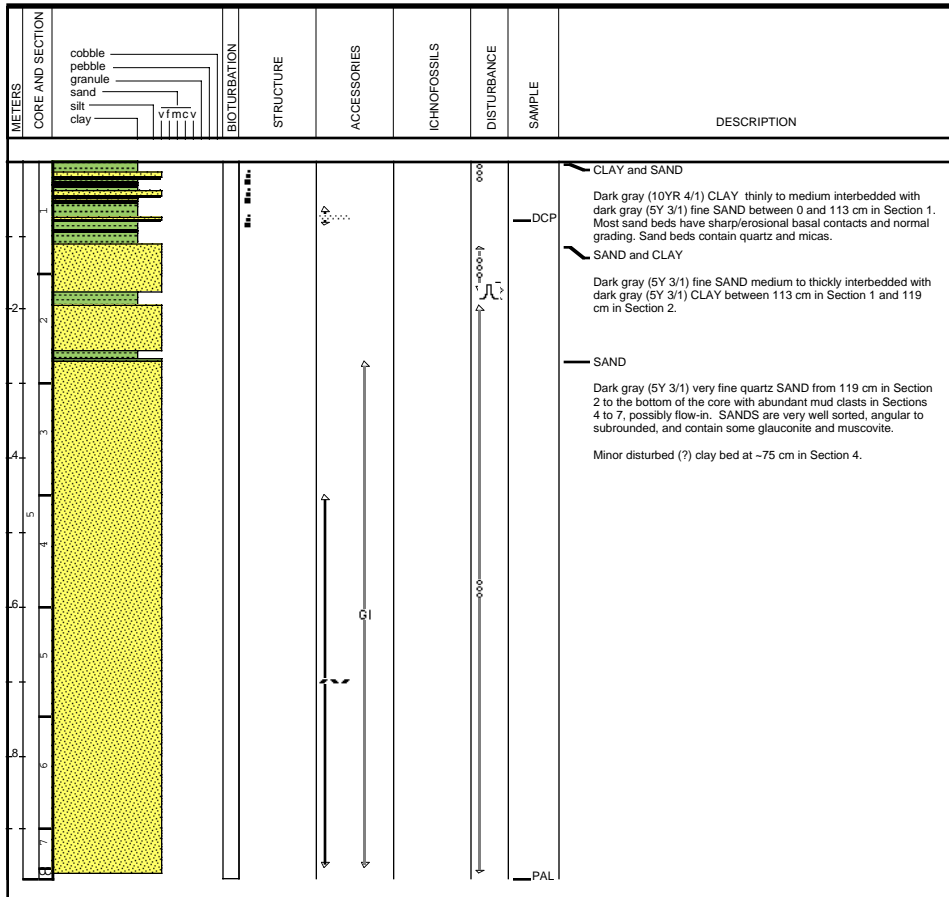
1071A-4H



Site 1071 Hole A Core 5H

Cored 16.2-25.7 mbsf

1071A-5H



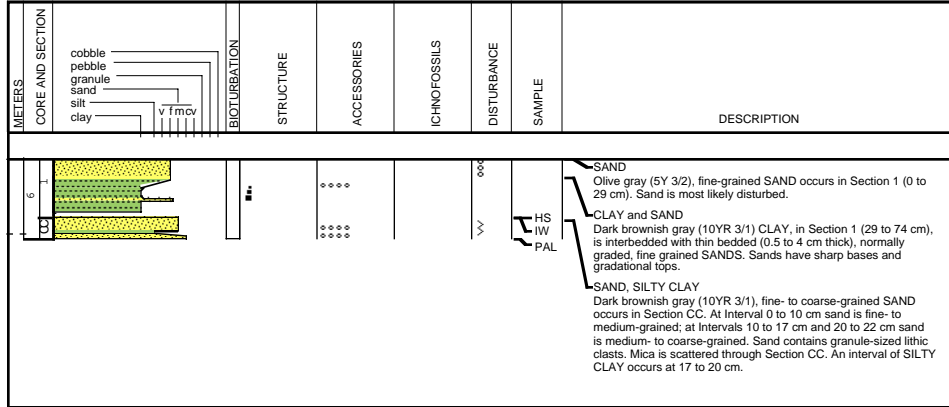
Site 1071 Hole A Core 6H

Cored 25.7-26.8 mbsf

1071A-6H

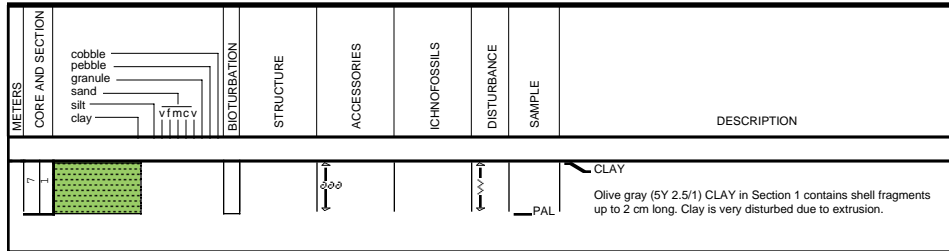
1071A-7H

1071A-8X



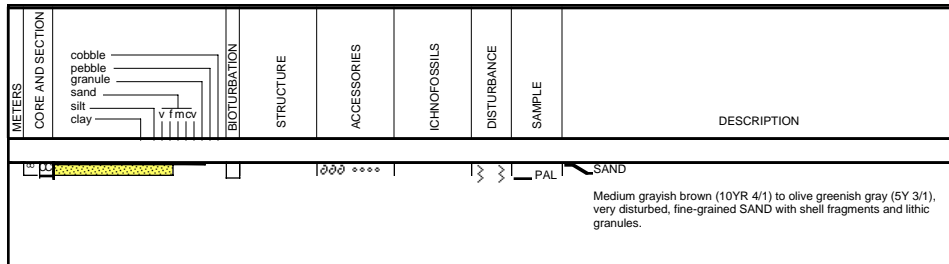
Site 1071 Hole A Core 7H

Cored 26.8-36.3 mbsf



Site 1071 Hole A Core 8X

Cored 36.3-39.9 mbsf



1071A-9X NO RECOVERY

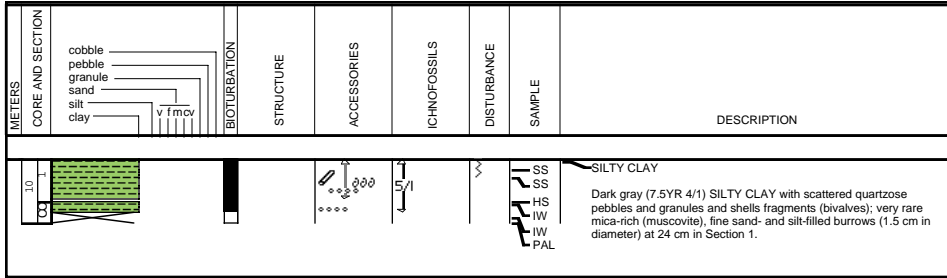
1071A-10X

1071B-2X

1071B-3X

Site 1071 Hole A Core 10X

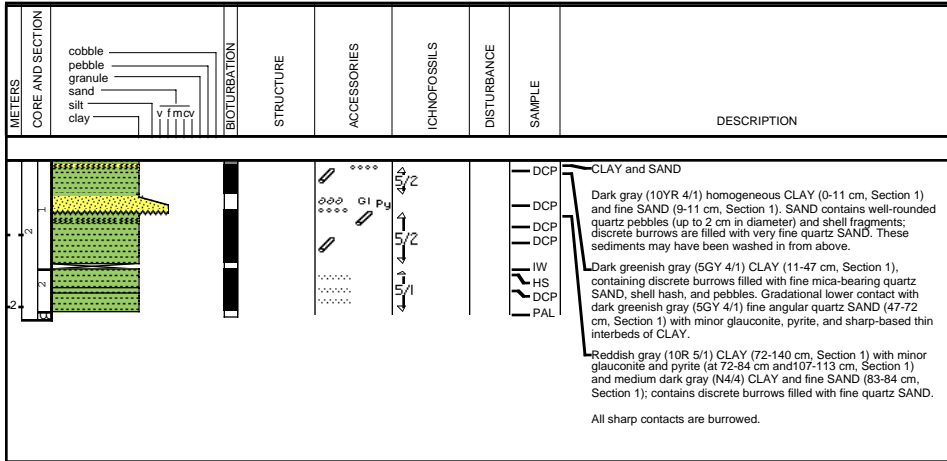
Cored 49.3-51.9 mbsf



1071B-1W WASH CORE; undescribed

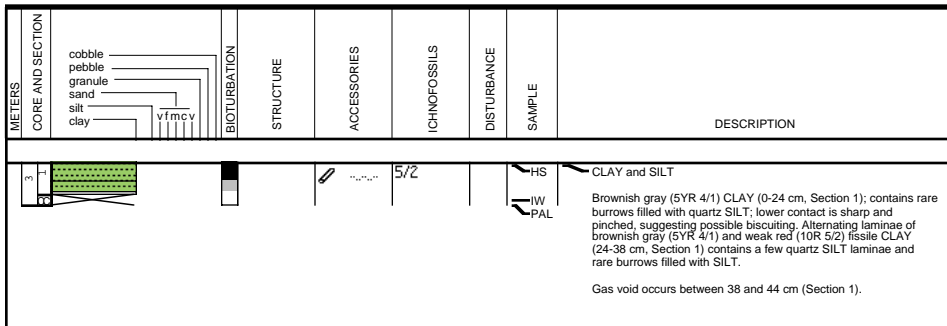
Site 1071 Hole B Core 2X

Cored 39.8-49.2 mbsf



Site 1071 Hole B Core 3X

Cored 49.2-52.9 mbsf

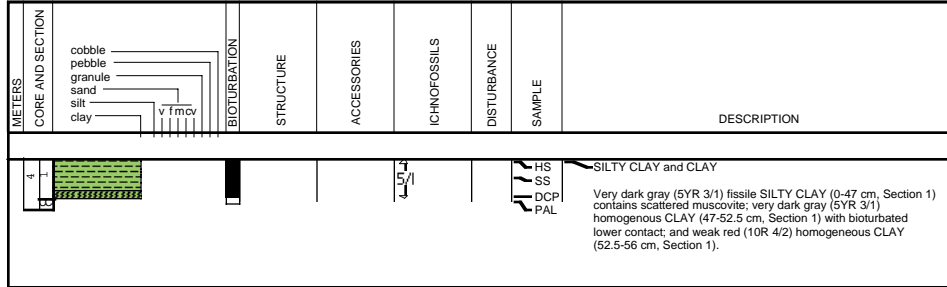


Site 1071 Hole B Core 4X

Cored 52.9-58.4 mbsf

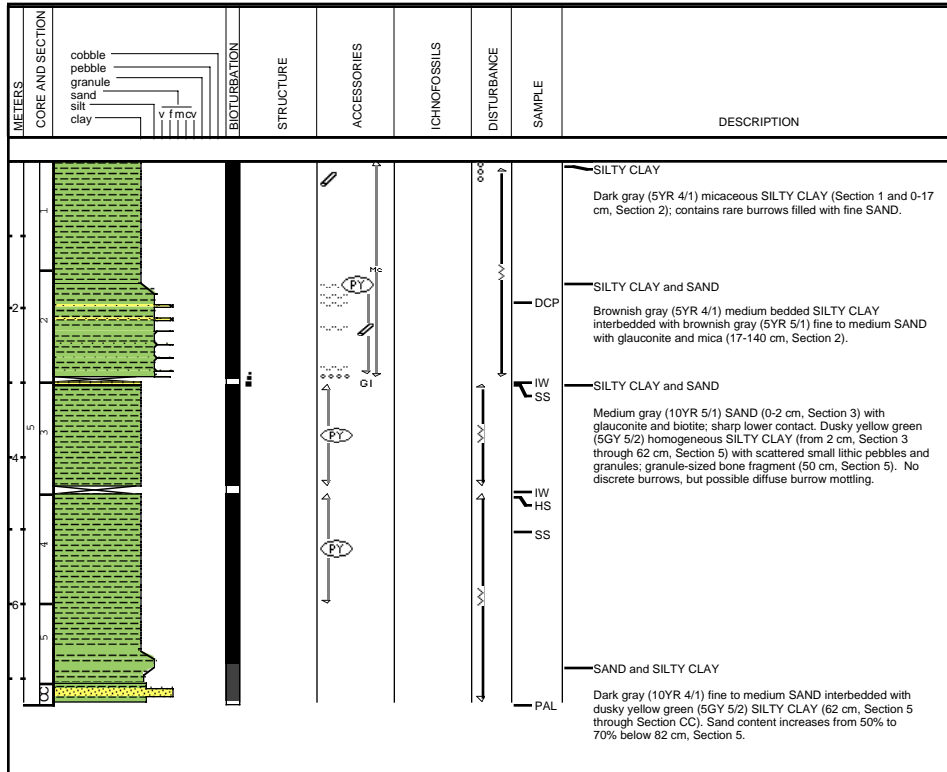
1071B-4X

1071B-5X



Site 1071 Hole B Core 5X

Cored 58.4-67.8 mbsf

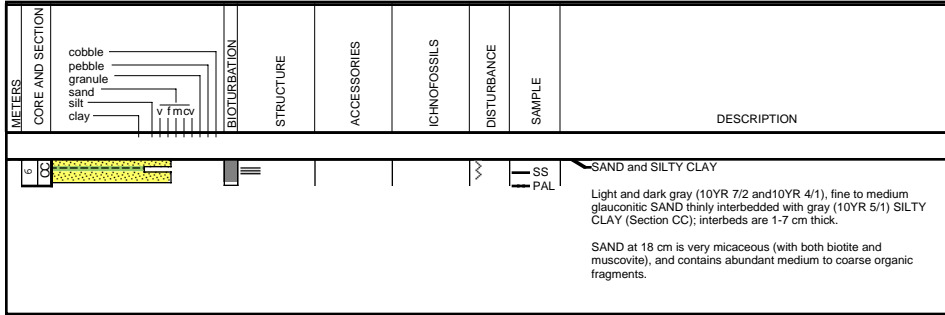


Site 1071 Hole B Core 6X

Cored 67.8-77.4 mbsf

1071B-6X

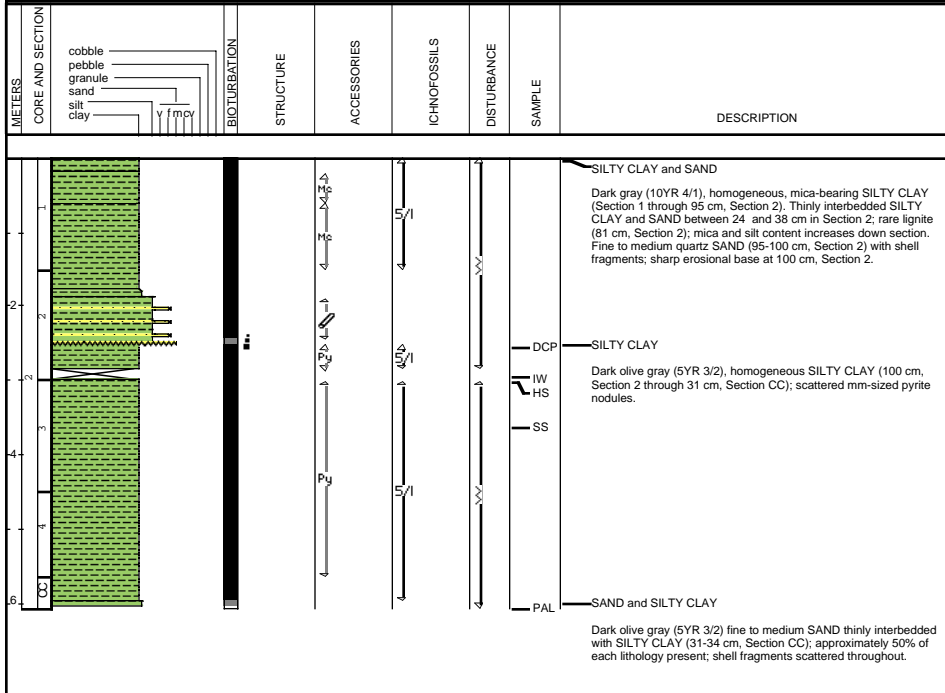
1071C-2X



1071C-1X NO RECOVERY

Site 1071 Hole C Core 2X

Cored 58.4-67.8 mbsf





Site 1071 Hole C Core 3X

Cored 67.8-77.4 mbsf

1071C-3X

1071C-6X

1071C-7X

METERS	CORE AND SECTION	BIOTURBATION	STRUCTURE	ACCESSORIES	ICHOFOSSILS	DISTURBANCE	SAMPLE	DESCRIPTION
3							DCP PAL	SANDY CLAY and SAND Dark grayish brown to weak red (10YR 4/2 - 2.5 YR 4/2) SANDY CLAY (65 - 80%) interbedded with light gray (10YR 6/1) fine SAND (35 - 20%) (Section 1 through 16 cm, Section CC). Greenish gray (5Y 6/1) medium to coarse glauconitic quartz SAND (16-20 cm, Section CC).

1071C-4X NO RECOVERY

1071C-5X NO RECOVERY

Site 1071 Hole C Core 6X

Cored 96.2-105.6 mbsf

METERS	CORE AND SECTION	BIOTURBATION	STRUCTURE	ACCESSORIES	ICHOFOSSILS	DISTURBANCE	SAMPLE	DESCRIPTION
6							HS SS IW PAL	SANDY CLAY and SAND Dark gray (5Y 4/1) SANDY CLAY (65%) interbedded with greenish to dark gray (5GY 6/1 - 5Y 4/1) fine micaceous and glauconitic SAND (35%); well-rounded quartz pebbles 5-6 mm in diameter (52.57 cm, Section 1).

Site 1071 Hole C Core 7X

Cored 105.6-114.9 mbsf

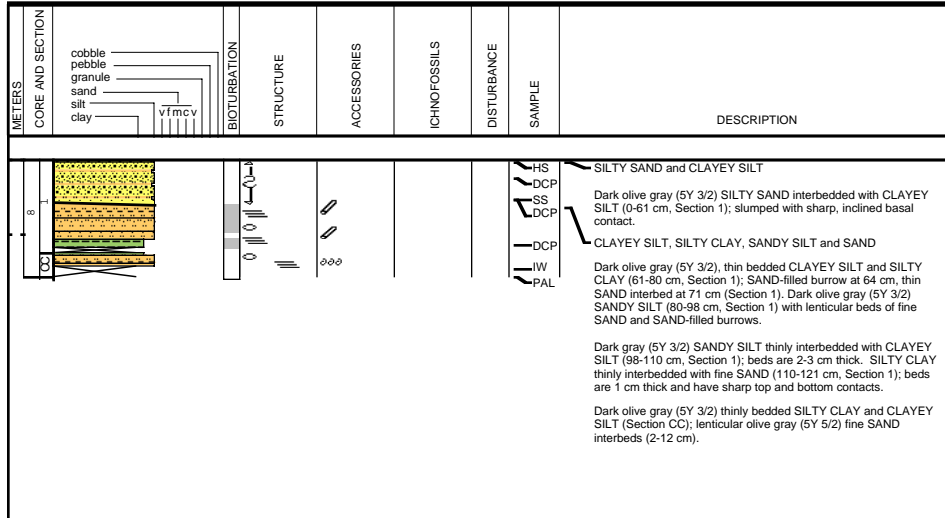
METERS	CORE AND SECTION	BIOTURBATION	STRUCTURE	ACCESSORIES	ICHOFOSSILS	DISTURBANCE	SAMPLE	DESCRIPTION
7							IW PAL	SANDY CLAY and SAND Dark greenish gray (5GY 4/1) SAND (35%) interbedded with dark gray (5Y 4/1) fine micaceous and glauconitic SANDY CLAY (65%) throughout Section CC; basal contacts of sand layers are disrupted. Discrete sand-filled burrows occur between 0-12 cm.

Site 1071 Hole C Core 8X

Cored 114.9-124.5 mbsf

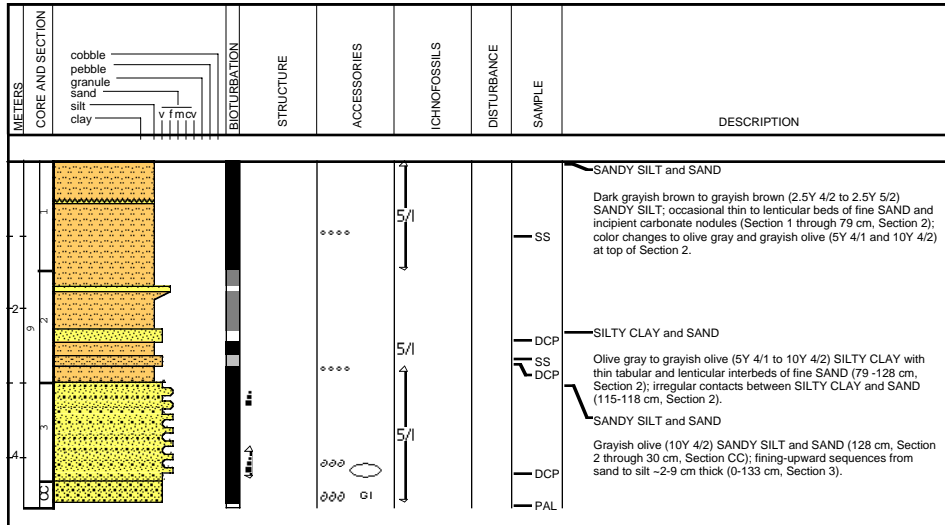
1071C-8X

1071C-9X



Site 1071 Hole C Core 9X

Cored 124.5-134.0 mbsf

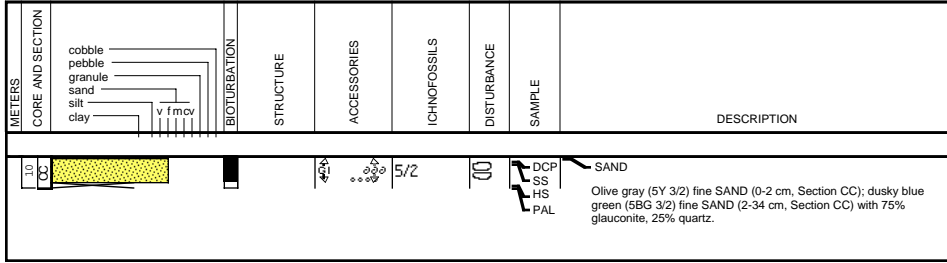


Site 1071 Hole C Core 10X

Cored 134.0-143.5 mbsf

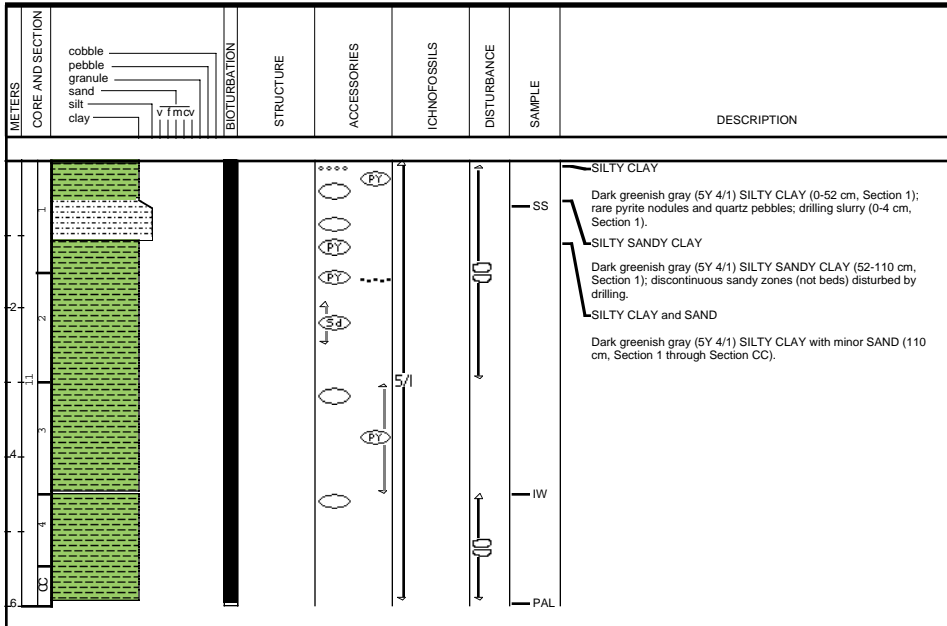
1071C-10X

1071C-11X



Site 1071 Hole C Core 11X

Cored 143.5-148.5 mbsf



Site 1071 Hole C Core 12X

Cored 148.5-152.9 mbsf

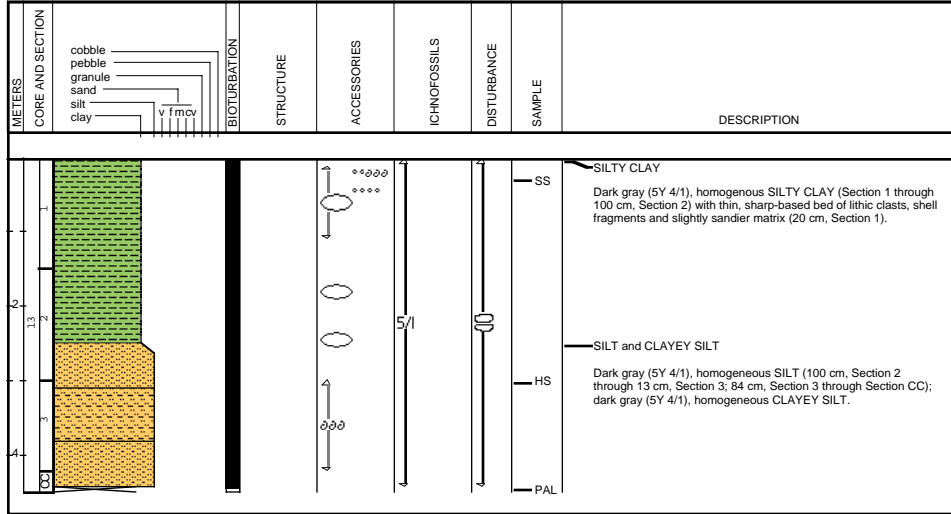
1071C-12X

METERS	CORE AND SECTION	TEXTURE	STRUCTURE	ACCESSORIES	FOSSELS	DISTURBANCE	SAMPLE	DESCRIPTION
1 2 3 4								<p>SILTY CLAY and SANDY SILT</p> <p>Drilling slurry (0-5cm, Section 1)</p> <p>Dark greenish gray (5Y 4/1), homogeneous SILTY CLAY (25 cm, Section 1 through Section CC) with scattered olive (5Y 5/4) pyrite nodules; SANDY SILT (5-25 cm, Section 1).</p> <p>SS</p> <p>IW HS</p>

Site 1071 Hole C Core 13X

Cored 152.9-157.9 mbsf

1071C-13X

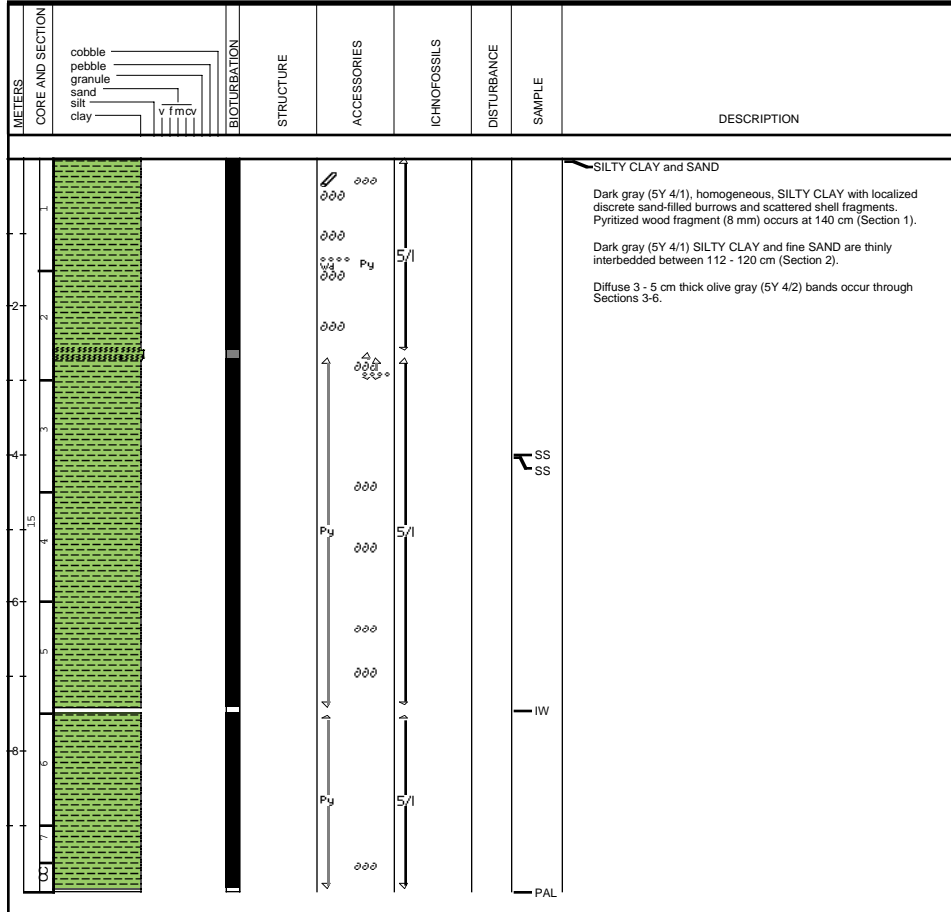




Site 1071 Hole C Core 15X

Cored 162.4-171.8 mbsf

1071C-15X

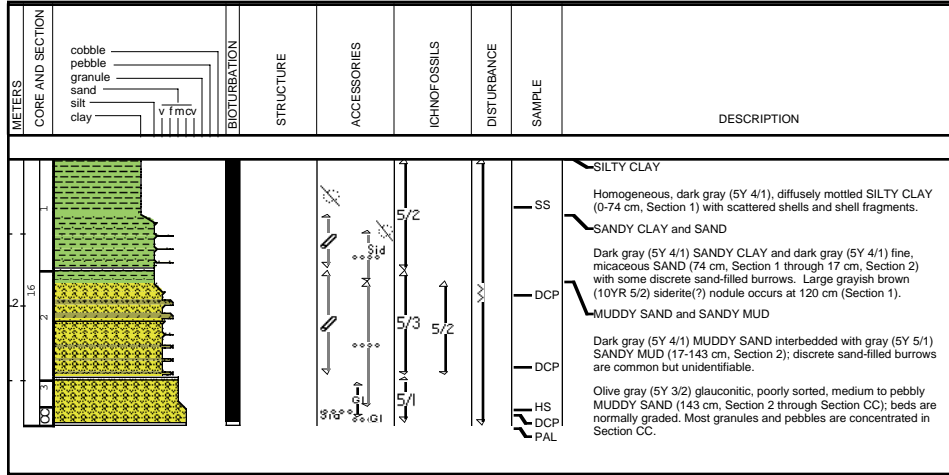


Site 1071 Hole C Core 16X

Cored 171.8-181.3 mbsf

1071C-16X

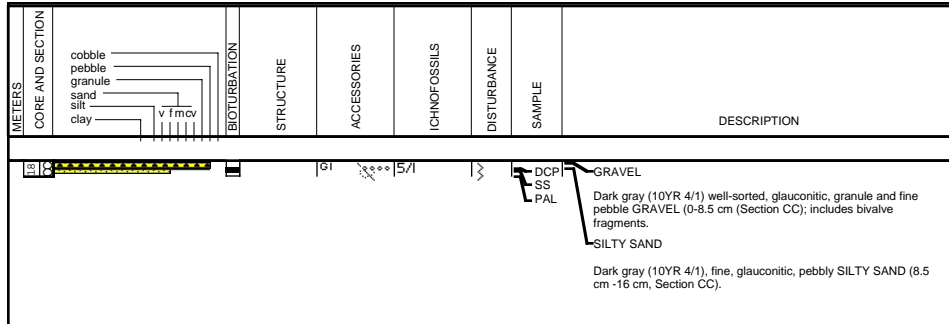
1071C-18X



1071C-17X NO RECOVERY

Site 1071 Hole C Core 18X

Cored 190.8-200.1 mbsf



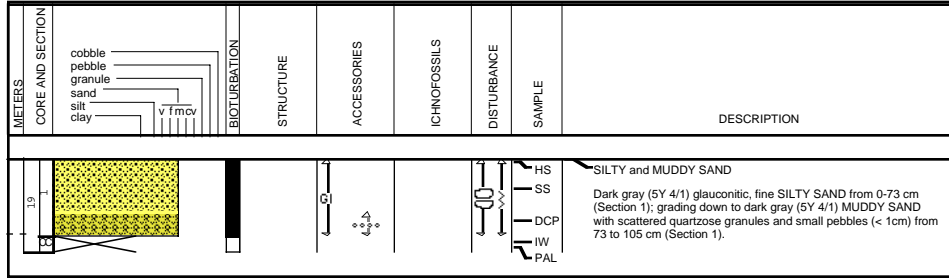


Site 1071 Hole C Core 19X

Cored 200.1-209.5 mbsf

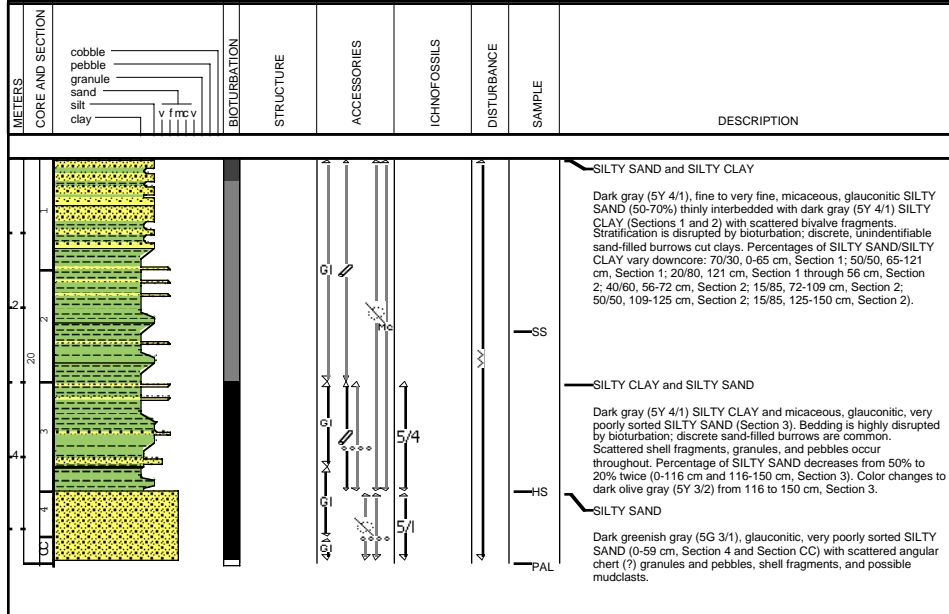
1071C-19X

1071C-20X



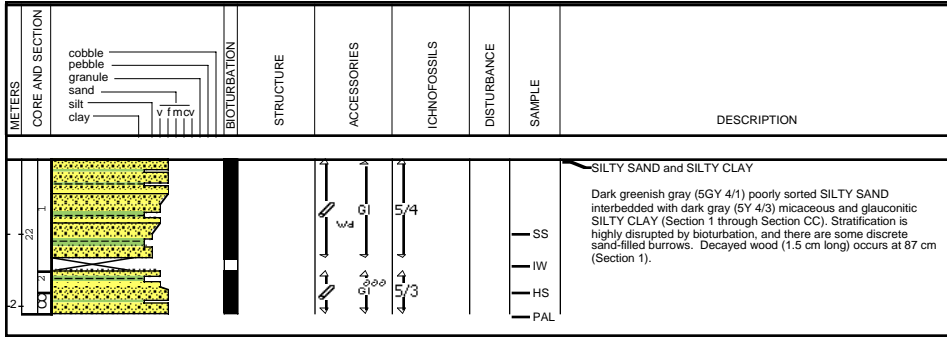
Site 1071 Hole C Core 20X

Cored 209.5-219.0 mbsf



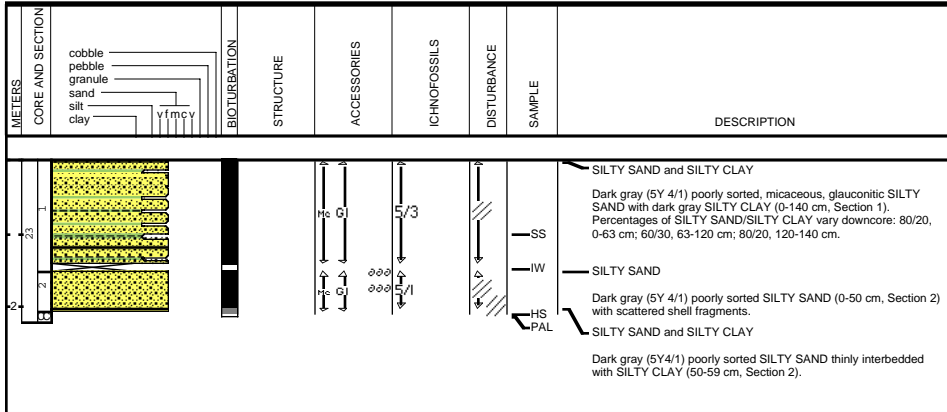
Site 1071 Hole C Core 22X

Cored 228.4-237.7 mbsf



Site 1071 Hole C Core 23X

Cored 237.7-247.0 mbsf

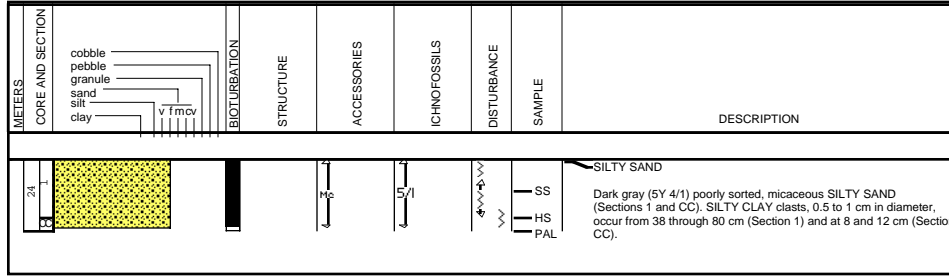


Site 1071 Hole C Core 24X

Cored 247.0-251.6 mbsf

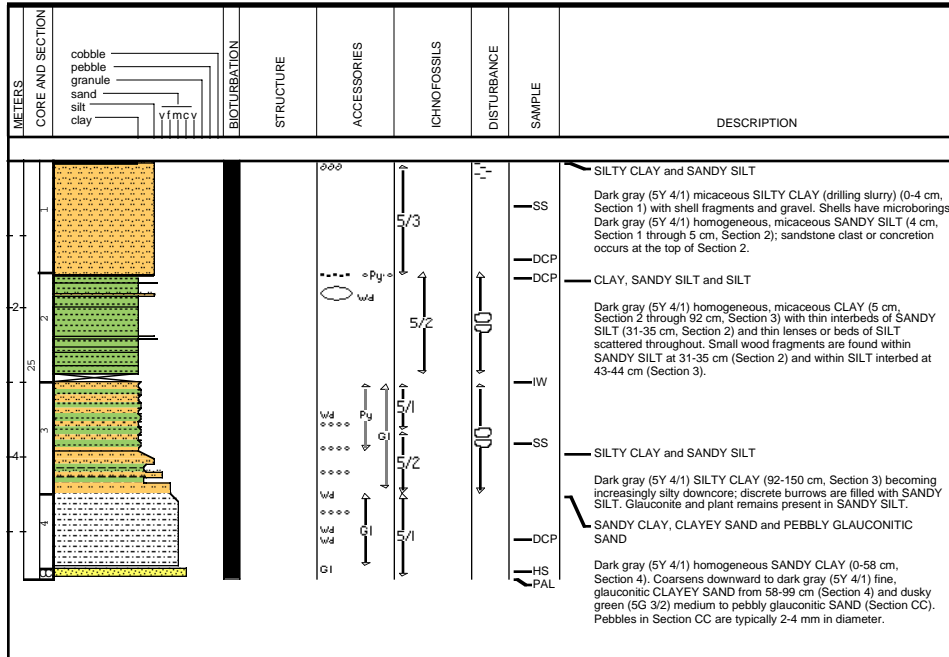
1071C-24X

1071C-25X



Site 1071 Hole C Core 25X

Cored 251.6-256.4 mbsf



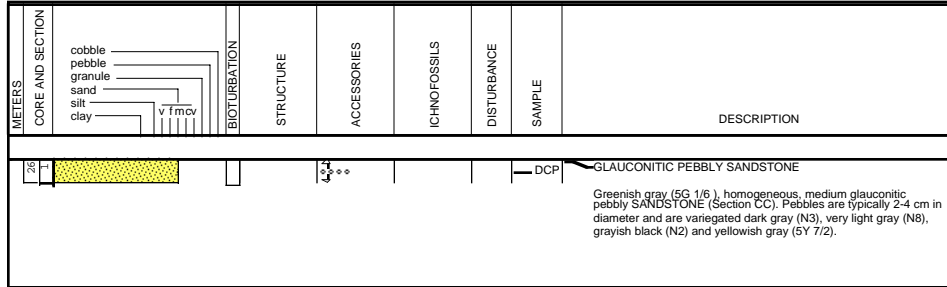
Site 1071 Hole C Core 26X

Cored 256.4-256.9 mbsf

1071C-26X

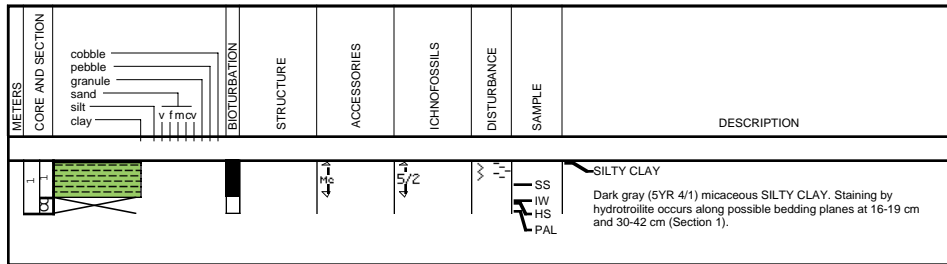
1071D-1R

1071D-5R



Site 1071 Hole D Core 1R

Cored 0.0-9.1 mbsf



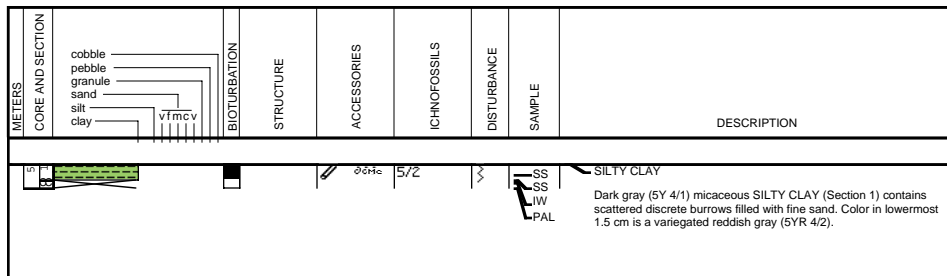
1071D-2R NO RECOVERY

1071D-3R NO RECOVERY

1071D-4R NO RECOVERY

Site 1071 Hole D Core 5R

Cored 38.0-47.7 mbsf



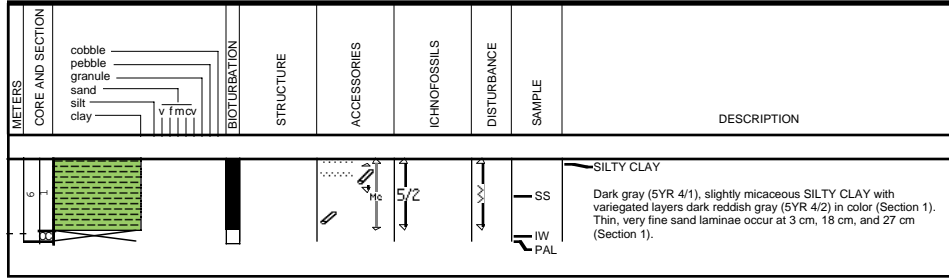
Site 1071 Hole D Core 6R

Cored 47.7-57.4 mbsf

1071D-6R

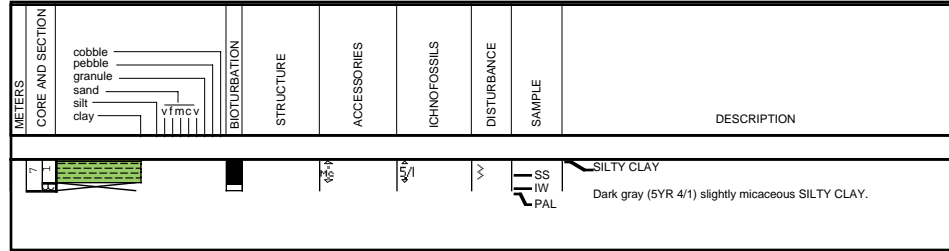
1071D-7R

1071D-8R



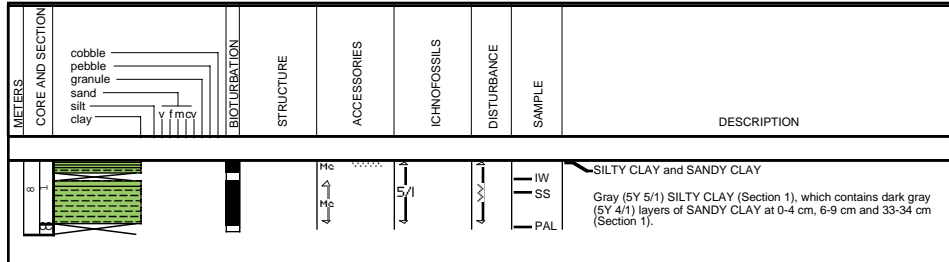
Site 1071 Hole D Core 7R

Cored 57.4-62.4 mbsf



Site 1071 Hole D Core 8R

Cored 62.4-66.9 mbsf



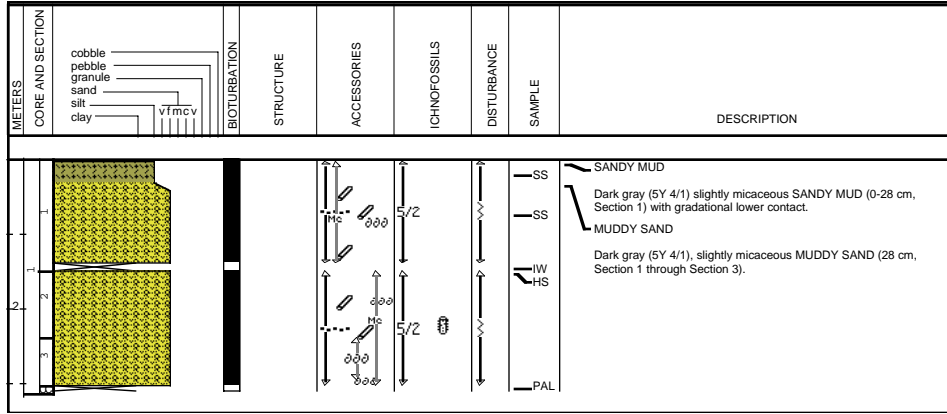
Site 1071 Hole F Core 1R

Cored 252.0-261.4 mbsf

1071F-1R

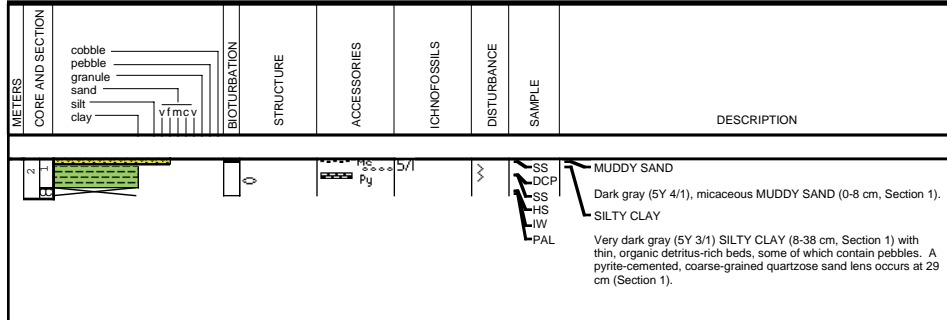
1071F-2R

SITE 1071



Site 1071 Hole F Core 2R

Cored 261.4-270.7 mbsf



1071F-3R NO RECOVERY

1071F-4R NO RECOVERY

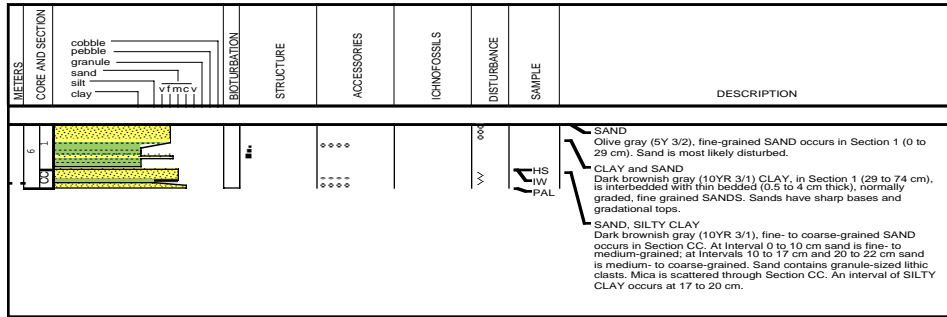
1071F-5R NO RECOVERY

1071F-6R

1071F-7R

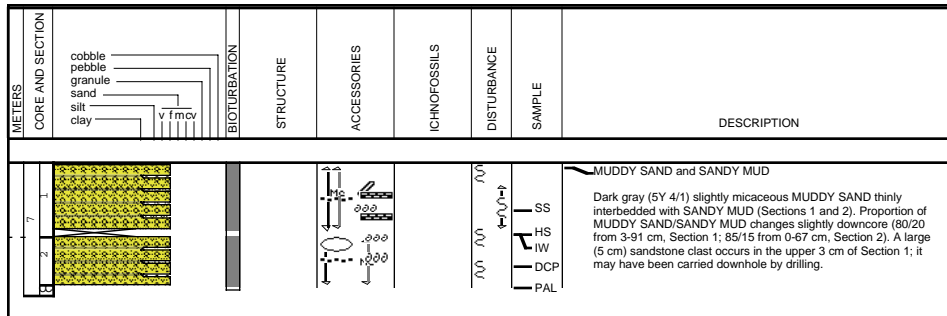
Site 1071 Hole A Core 6H

Cored 25.7-26.8 mbsf



Site 1071 Hole F Core 7R

Cored 329.6-339.0 mbsf

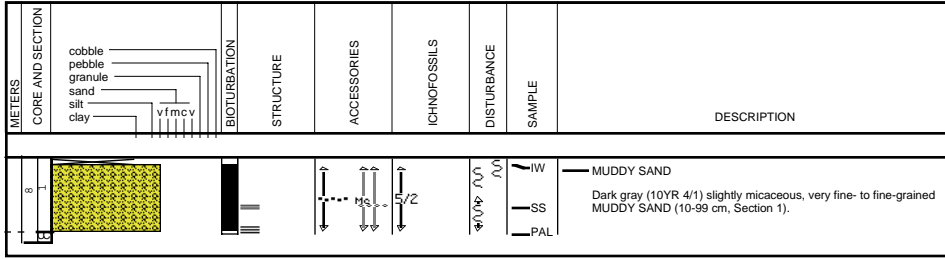


Site 1071 Hole F Core 8R

Cored 339.0-348.5 mbsf

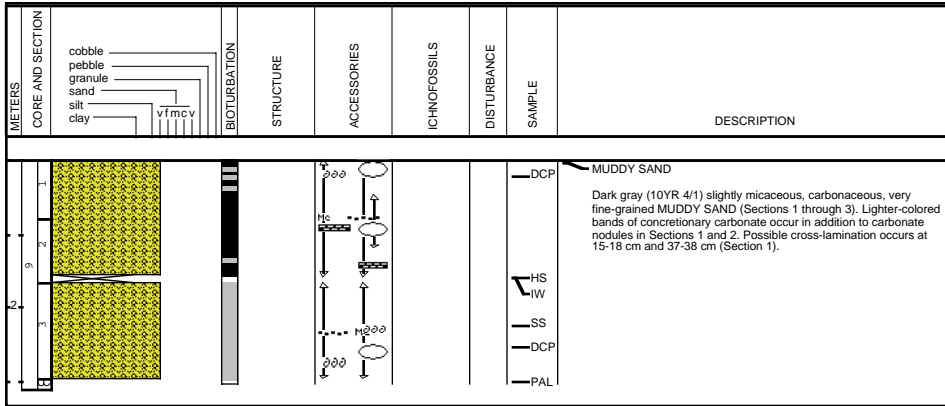
1071F-8R

1071F-9R



Site 1071 Hole F Core 9R

Cored 348.5-357.9 mbsf

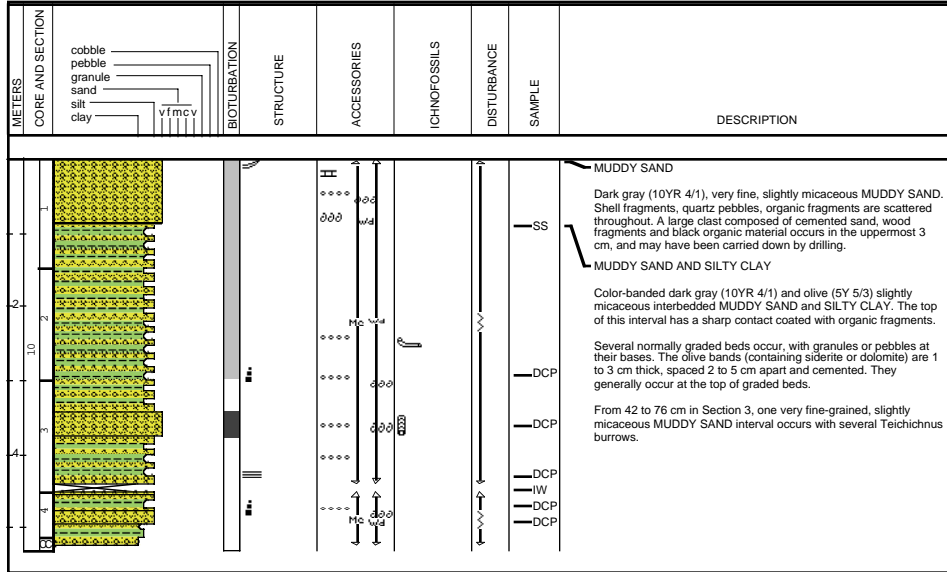




Site 1071 Hole F Core 10R

Cored 357.9-367.4 mbsf

1071F-10R



Site 1071 Hole F Core 11R

Cored 367.4-376.9 mbsf

1071F-11R

1071F-12R

METERS	CORE AND SECTION	BIOTURBATION	STRUCTURE	ACCESSORIES	ICHOFOSSILS	DISTURBANCE	SAMPLE	DESCRIPTION
1 2 3							<p>SS</p> <p>HS</p> <p>IW</p> <p>PAL</p>	<p>SILTY CLAY and SANDY MUD</p> <p>Olive (5Y 4/3) SILTY CLAY (50%) and SANDY MUD (50%) with scattered coarse grains and granules of quartz (0-14 cm, 147-150 cm, Section 1). Both intervals have been highly disturbed by drilling.</p> <p>SILTY CLAY</p> <p>Olive (5Y 4/3) SILTY CLAY (14-147 cm, Section 1), commonly cemented by carbonate. Lighter-colored carbonate-rich bands (~1 cm thick) occur throughout. Cemented intervals have faint laminae and thin (~1 cm) graded beds. Rare discrete burrows may be Teichichnus. Black organic matter is common throughout the core, but is concentrated at several intervals.</p> <p>MUDDY SAND</p> <p>Olive (5Y 4/3) MUDDY SAND (Section 2); sand is very fine to fine-grained. Black organic fragments are common throughout the section.</p> <p>SILTY CLAY and SANDY MUD</p> <p>Olive (5Y 4/3), slightly micaceous SILTY CLAY (80%) and SANDY MUD (20%) (Section 3). Black organic fragments are common throughout the section. Possible cross laminae occur between 11-14 cm (Section 3).</p>

Site 1071 Hole F Core 12R

Cored 376.9-386.3 mbsf

METERS	CORE AND SECTION	BIOTURBATION	STRUCTURE	ACCESSORIES	ICHOFOSSILS	DISTURBANCE	SAMPLE	DESCRIPTION
14							<p>SS</p> <p>PAL</p>	<p>SILTY CLAY</p> <p>Dark gray (5Y 4/1) slightly micaceous SILTY CLAY (Section 1).</p>

Site 1071 Hole F Core 13R

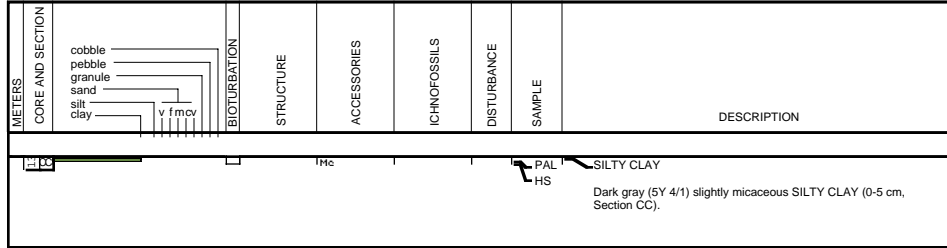
Cored 386.3-395.8 mbsf

1071F-13R

1071F-14R

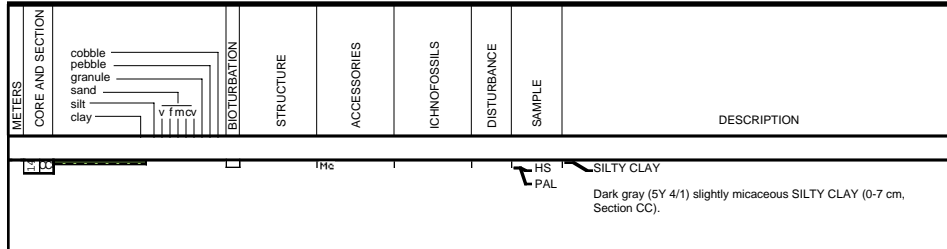
1071F-15R

1071F-16R



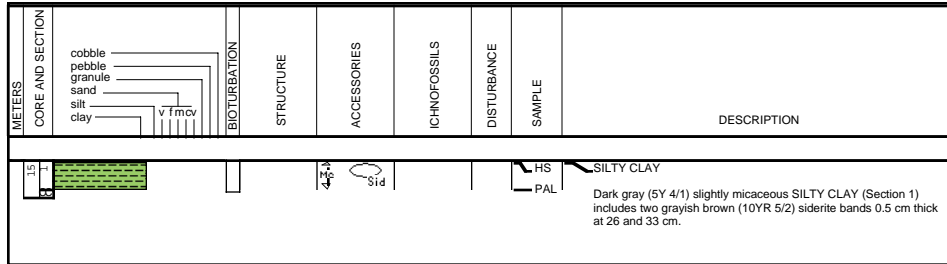
Site 1071 Hole F Core 14R

Cored 395.8-405.2 mbsf



Site 1071 Hole F Core 15R

Cored 405.2-414.8 mbsf



Site 1071 Hole F Core 16R

Cored 414.8-424.2 mbsf

