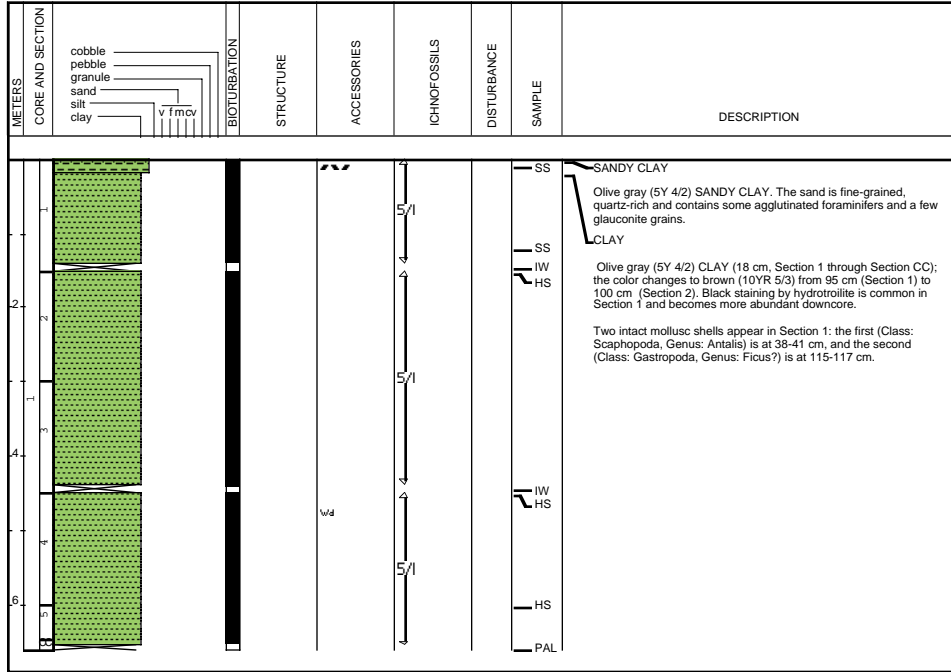


Site 1073 Hole A Core 1H

Cored 0.0-6.6 mbsf

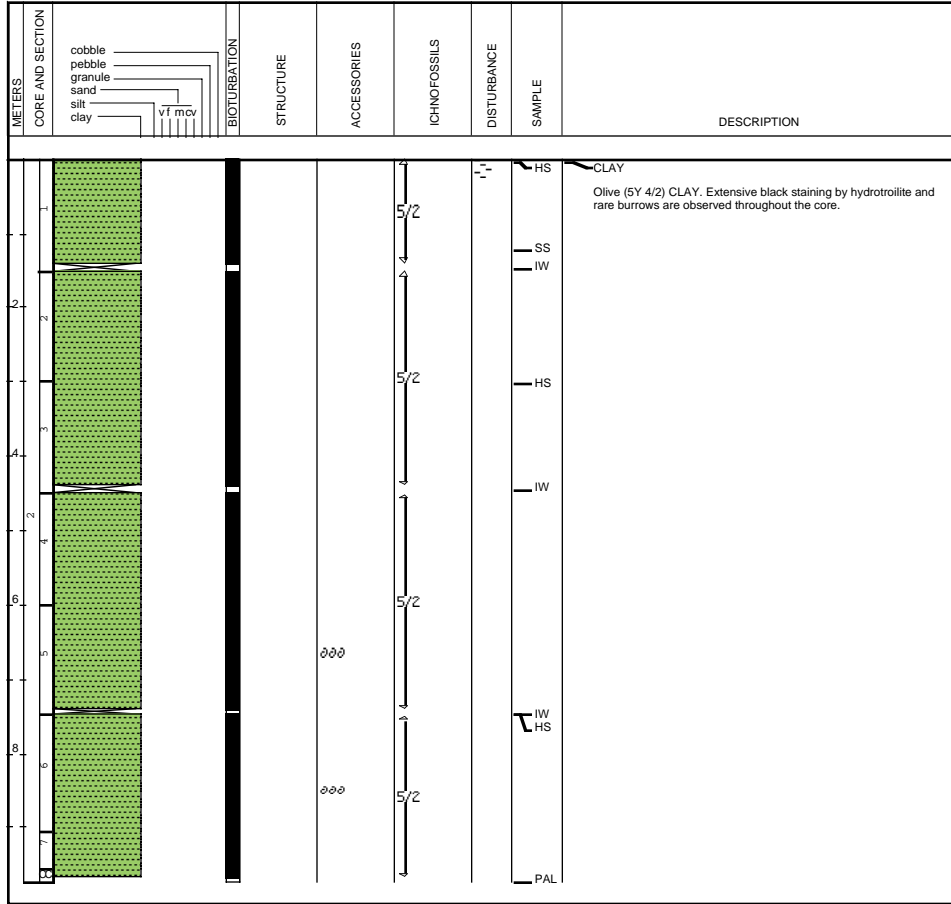
1073A-1H



Site 1073 Hole A Core 2H

Cored 6.6-16.1 mbsf

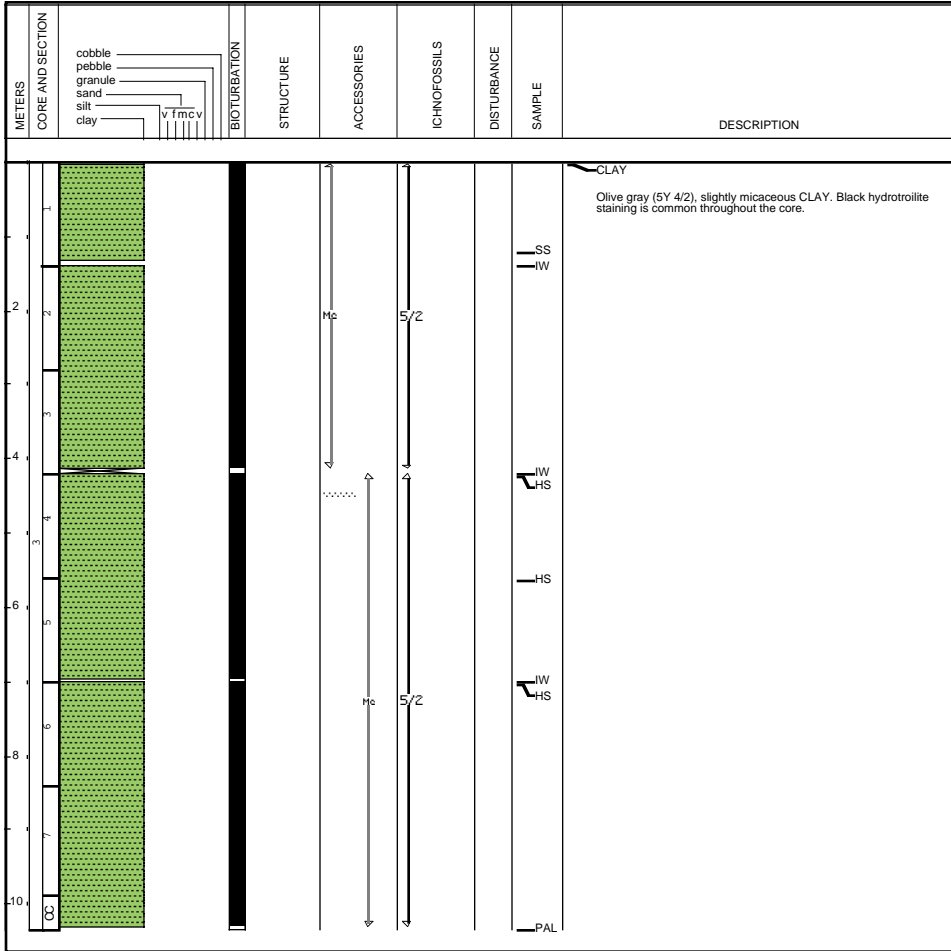
1073A-2H



Site 1073 Hole A Core 3H

Cored 16.1-25.6 mbsf

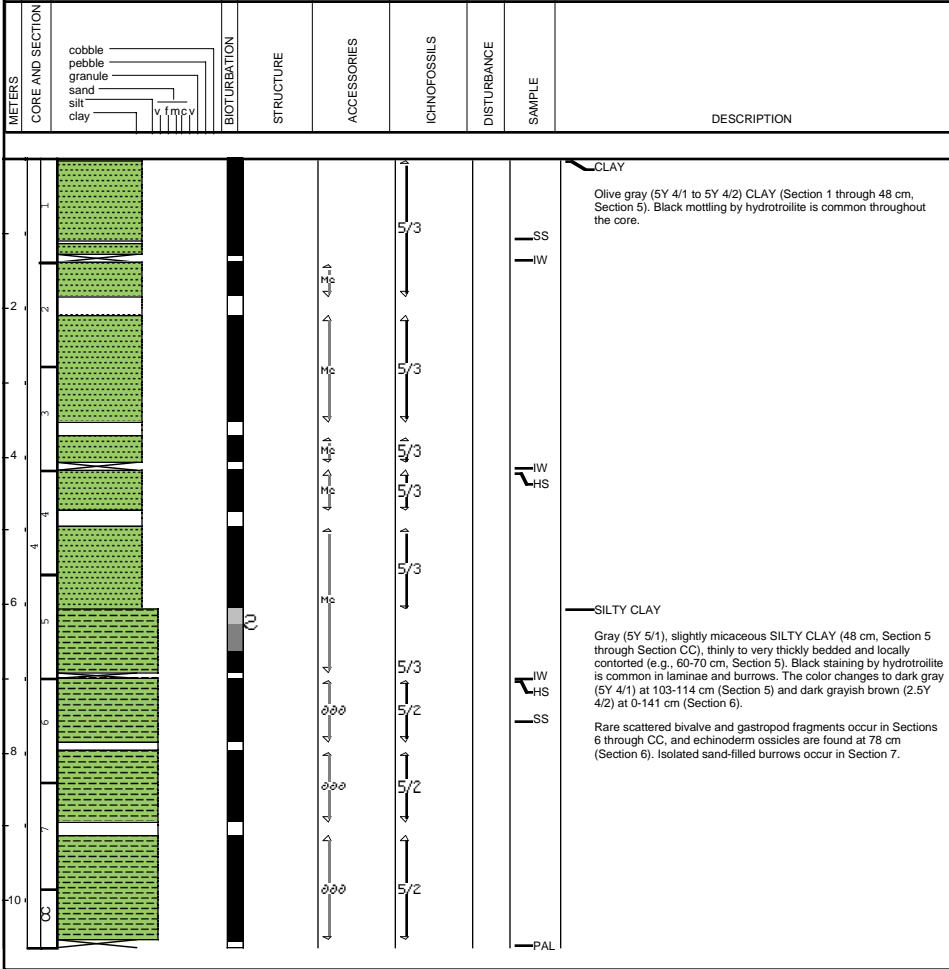
1073A-3H



Site 1073 Hole A Core 4H

Cored 25.6-35.1 mbsf

1073A-4H



SILTY CLAY

Gray (5Y 5/1), slightly micaceous SILTY CLAY (48 cm, Section 5 through Section CC), thinly to very thickly bedded and locally contorted (e.g., 60-70 cm, Section 5). Black staining by hydrotrolite is common in laminae and burrows. The color changes to dark gray (5Y 4/1) at 103-114 cm (Section 5) and dark grayish brown (2.5Y 4/2) at 0-141 cm (Section 6).

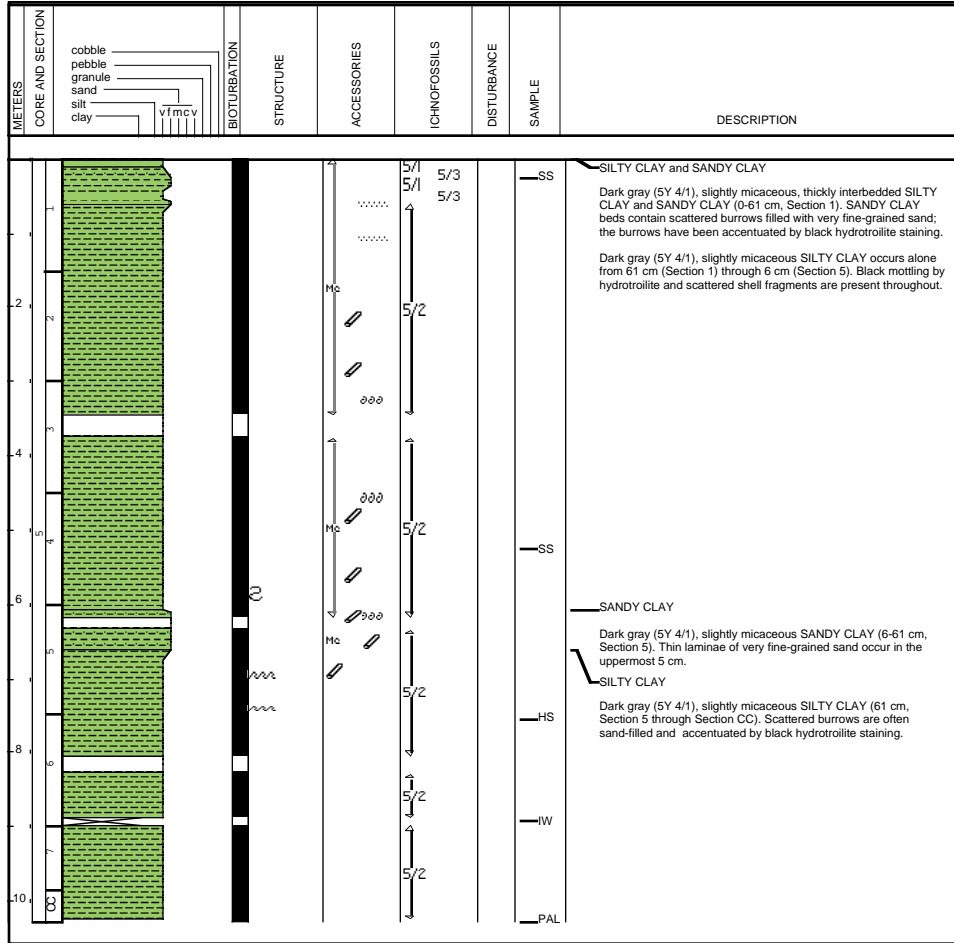
Rare scattered bivalve and gastropod fragments occur in Sections 6 through CC, and echinoderm ossicles are found at 78 cm (Section 6). Isolated sand-filled burrows occur in Section 7.

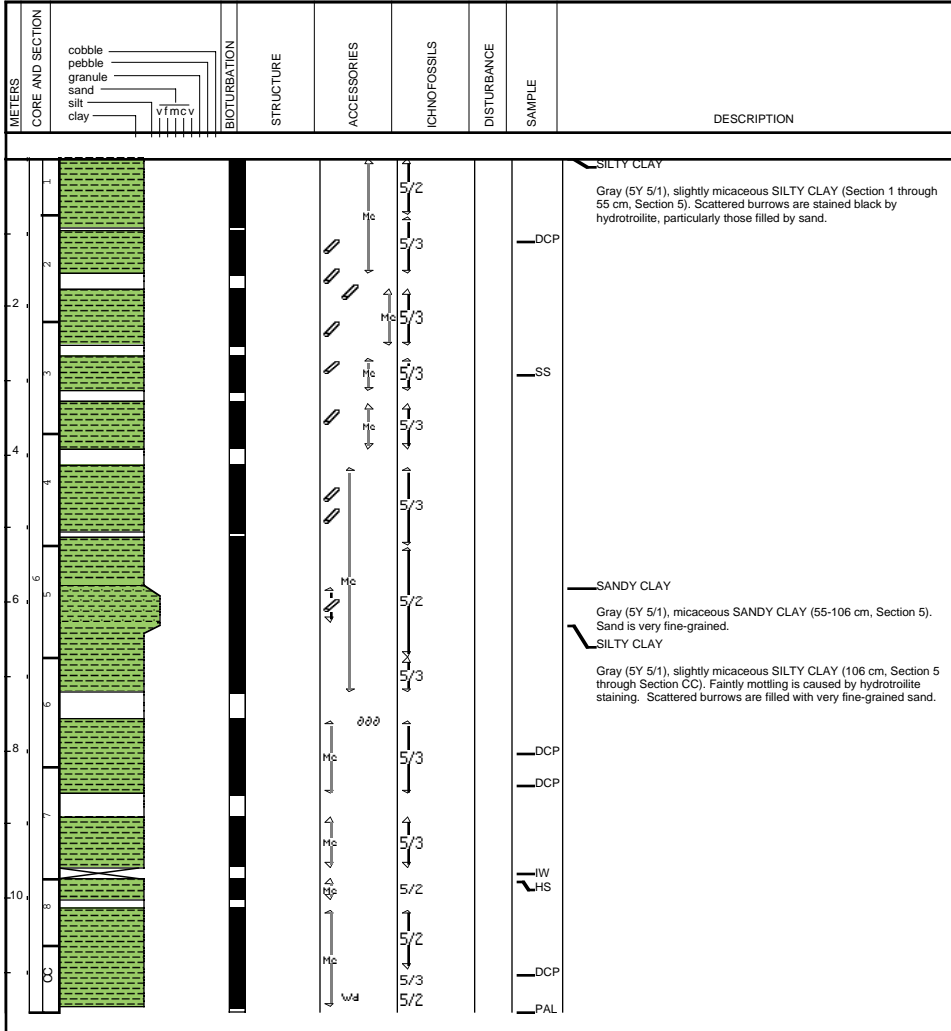
PAL

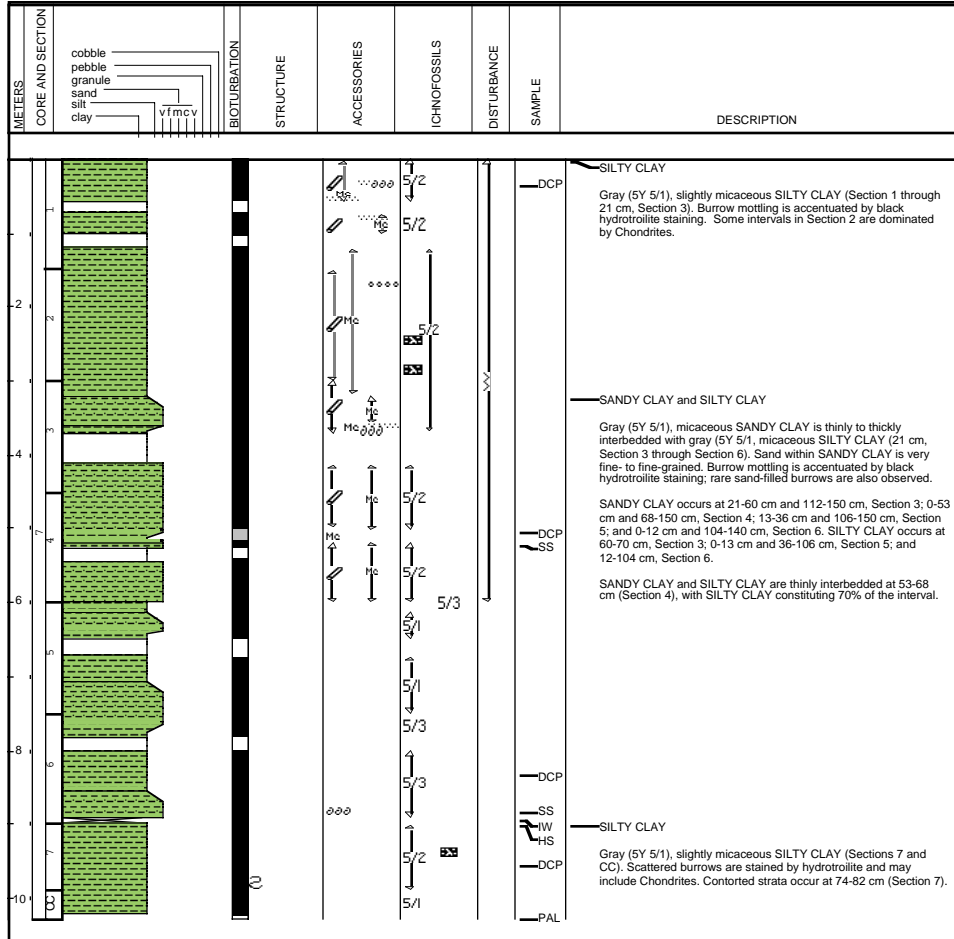
Site 1073 Hole A Core 5H

Cored 35.1-44.6 mbsf

1073A-5H



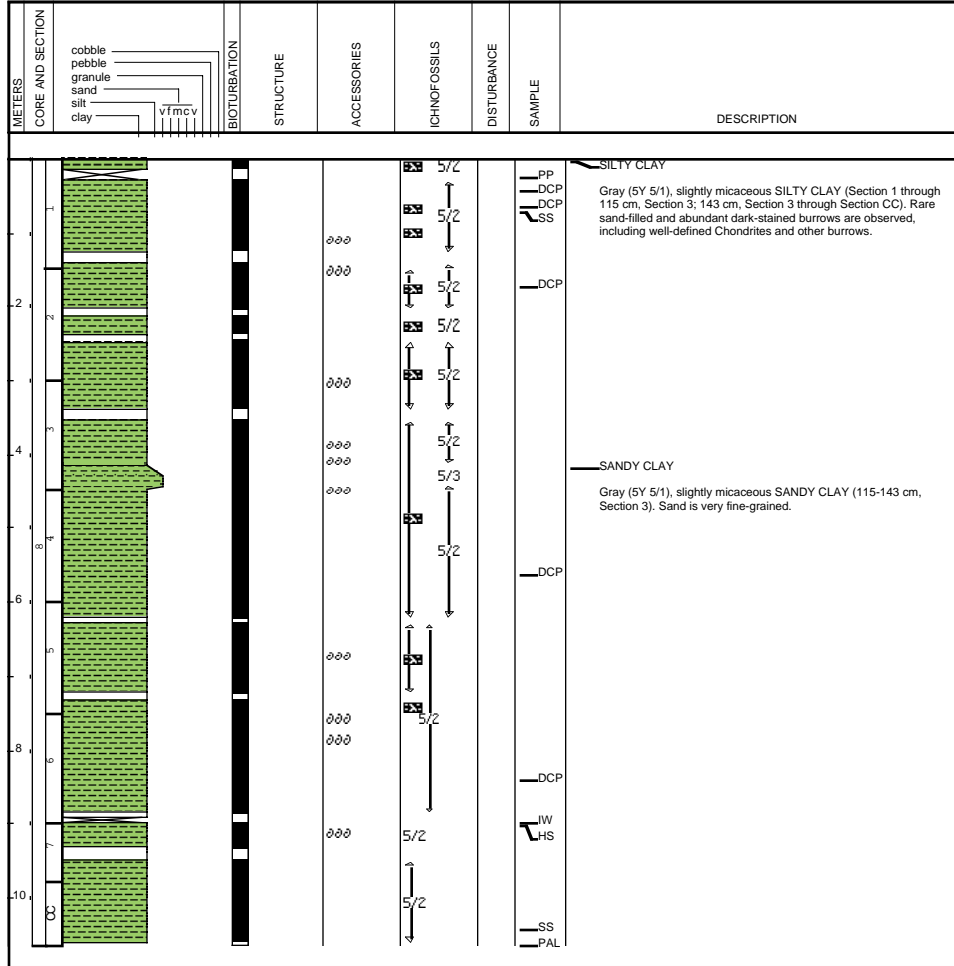




Site 1073 Hole A Core 8H

Cored 63.6-73.1 mbsf

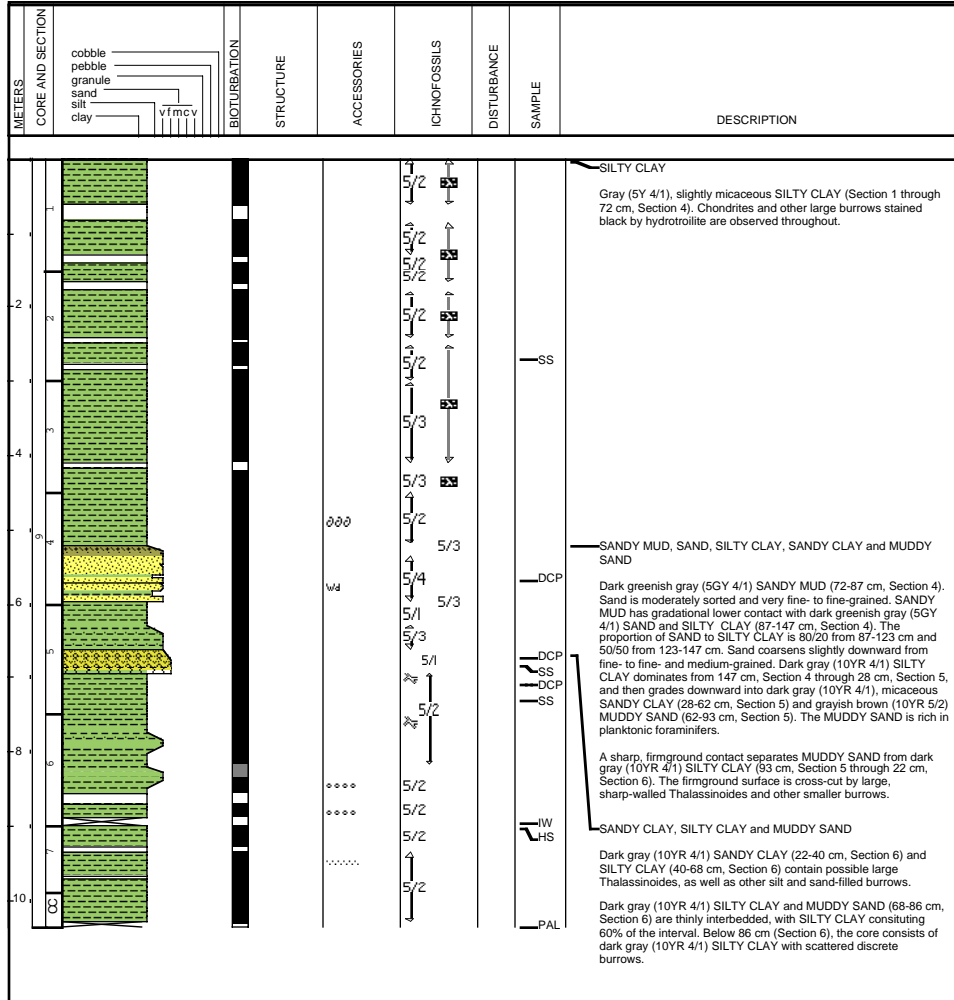
1073A-8H



Site 1073 Hole A Core 9H

Cored 73.1-82.6 mbsf

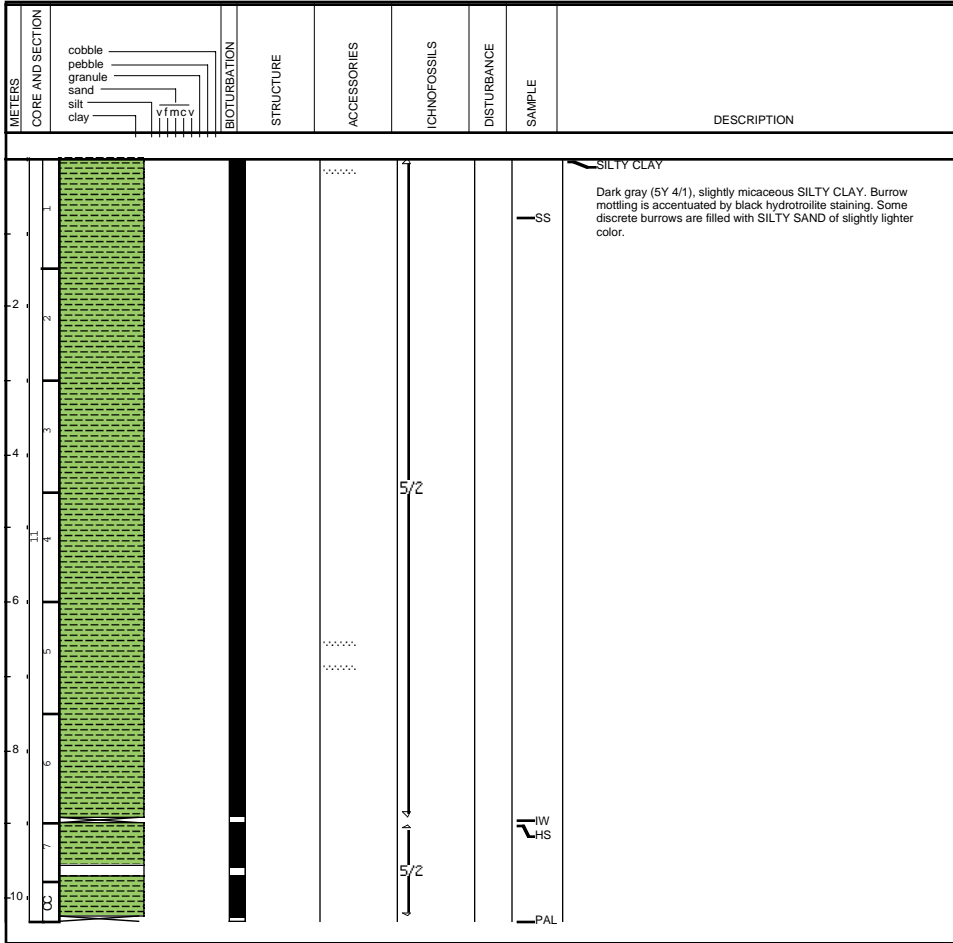
1073A-9H



Site 1073 Hole A Core 11H

Cored 92.1-101.6 mbsf

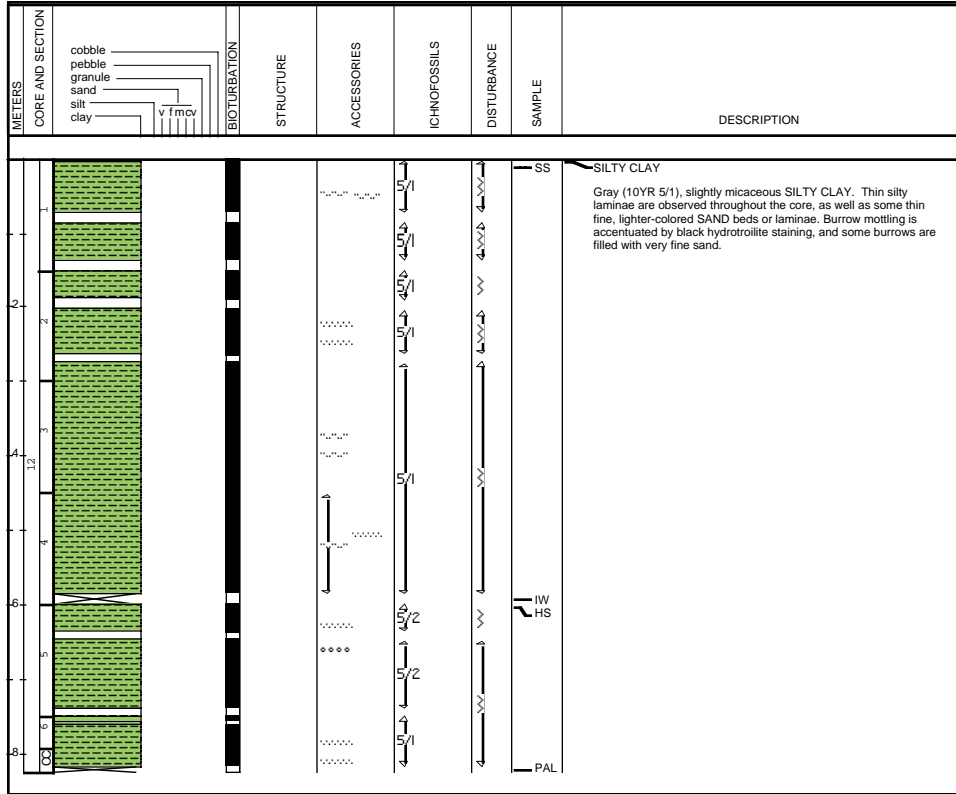
1073A-11H



Site 1073 Hole A Core 12H

Cored 101.6-111.1 mbsf

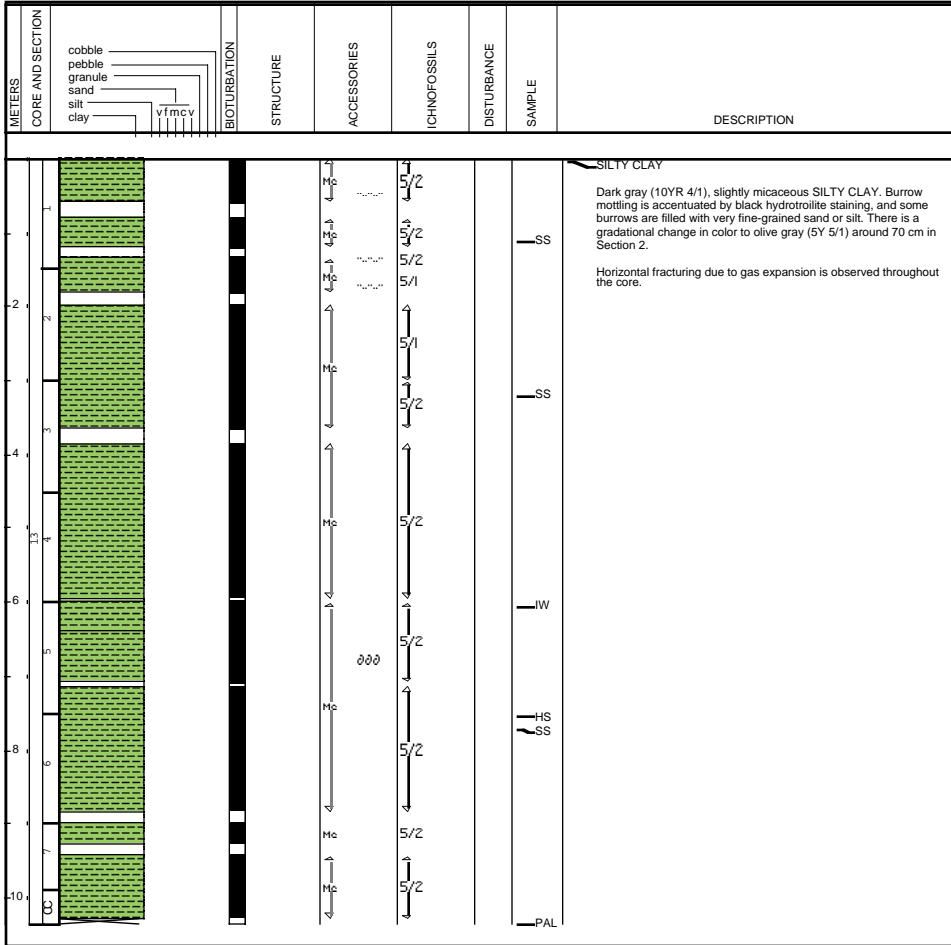
1073A-12H



Site 1073 Hole A Core 13H

Cored 111.1-120.6 mbsf

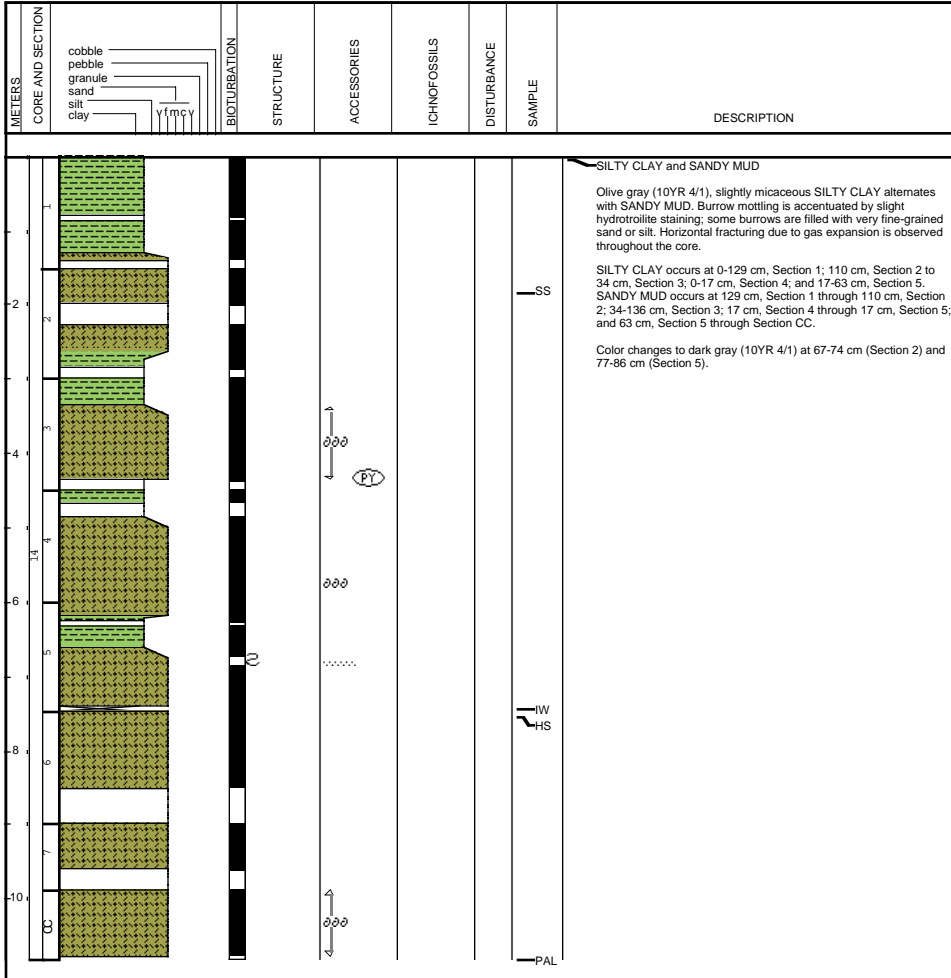
1073A-13H



Site 1073 Hole A Core 14H

Cored 120.6-130.1 mbsf

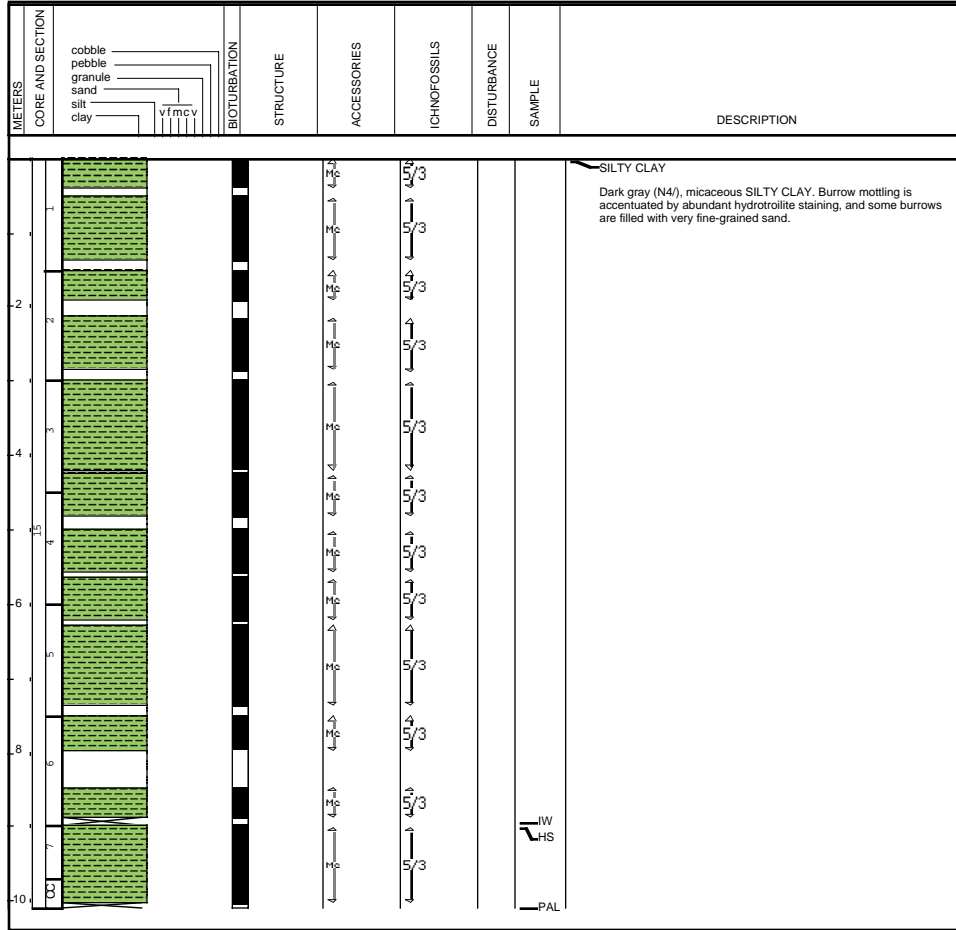
1073A-14H



Site 1073 Hole A Core 15H

Cored 130.1-139.6 mbsf

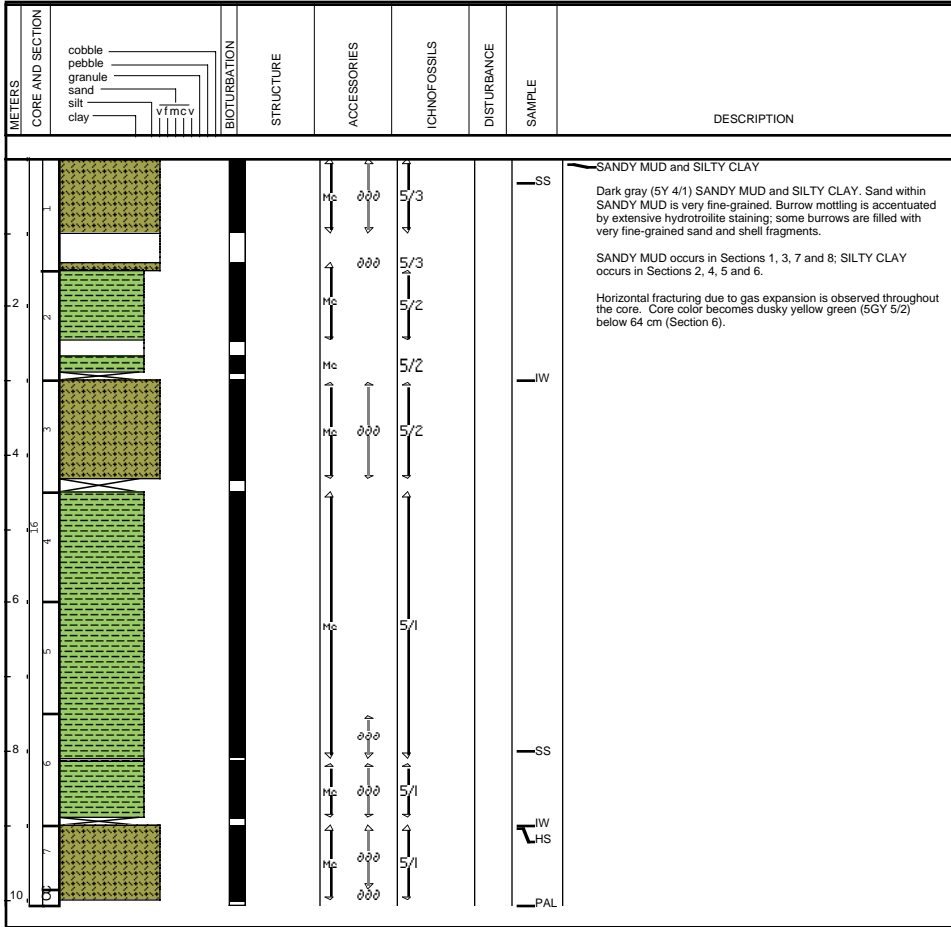
1073A-15H



Site 1073 Hole A Core 16H

Cored 139.6-149.1 mbsf

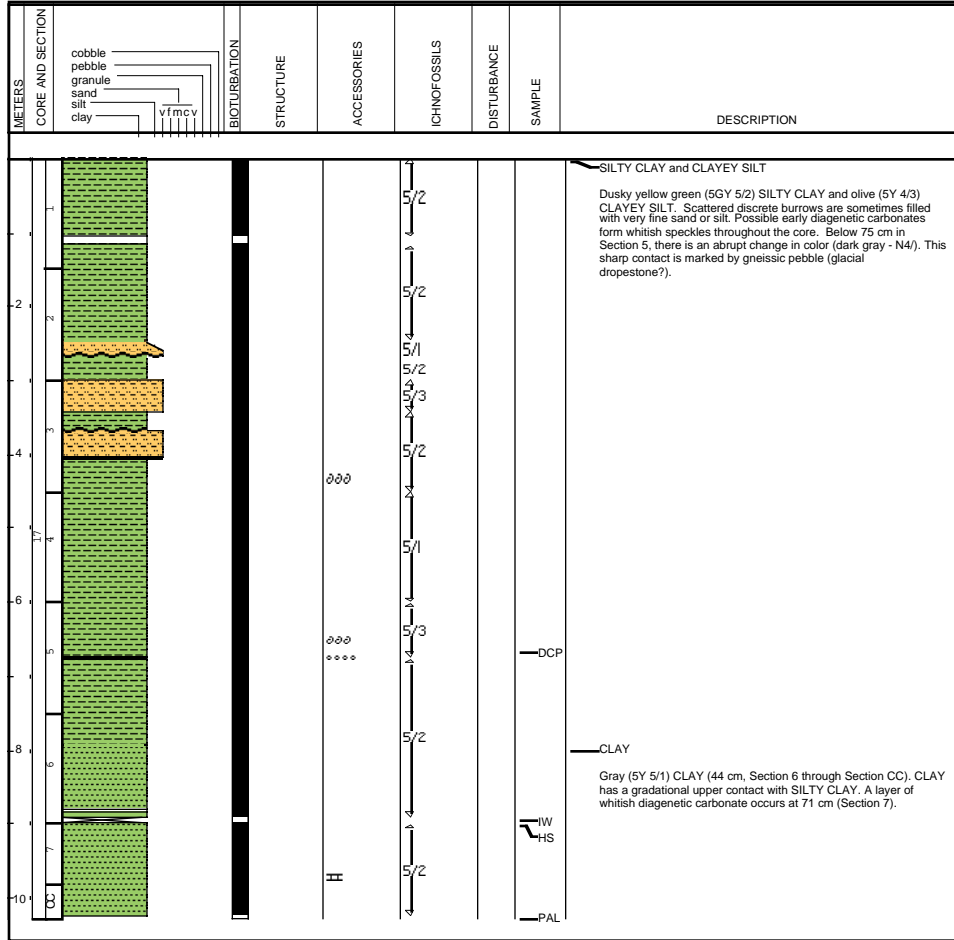
1073A-16H



Site 1073 Hole A Core 17H

Cored 149.1-158.6 mbsf

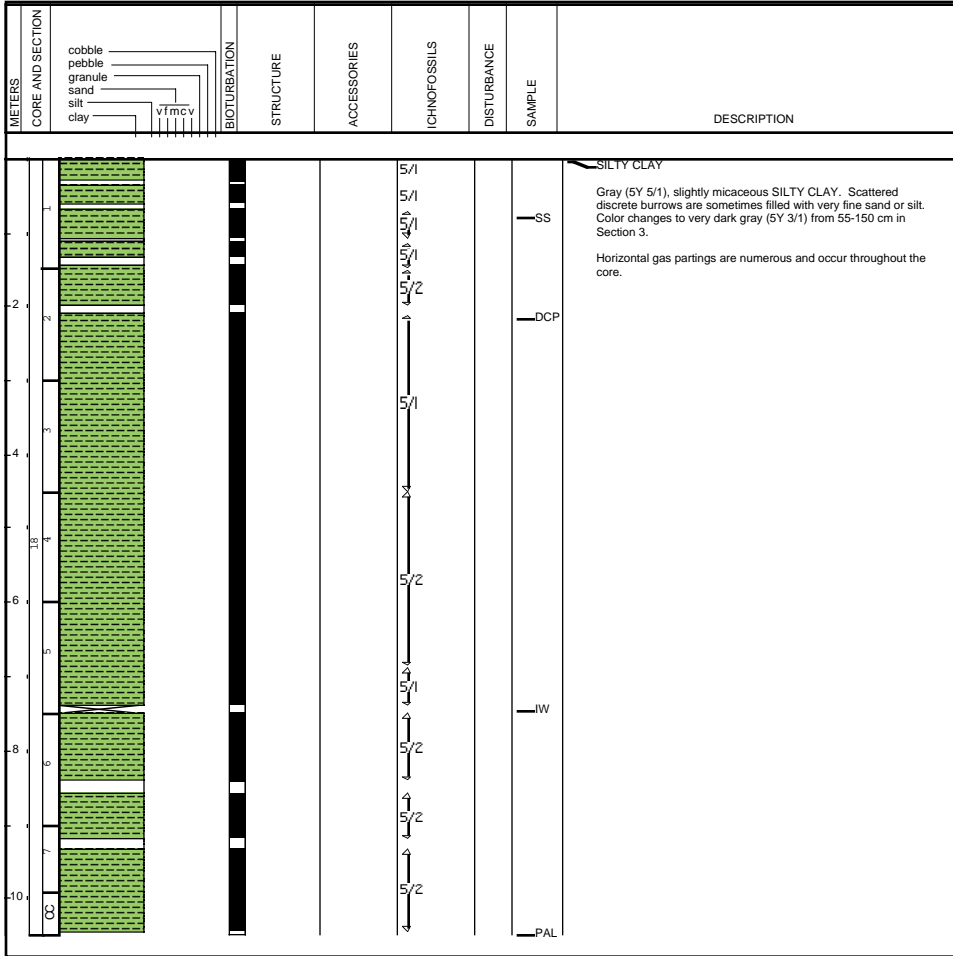
1073A-17H



Site 1073 Hole A Core 18H

Cored 158.6-168.1 mbsf

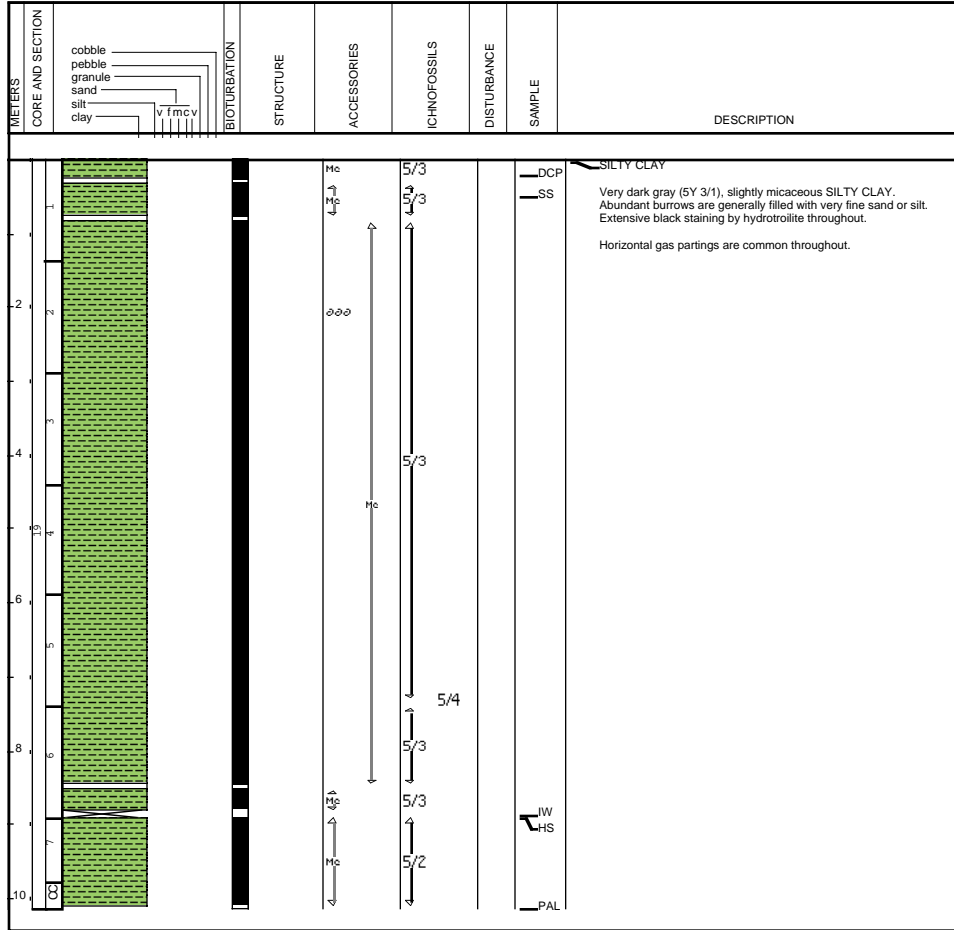
1073A-18H



Site 1073 Hole A Core 19H

Cored 168.1-177.6 mbsf

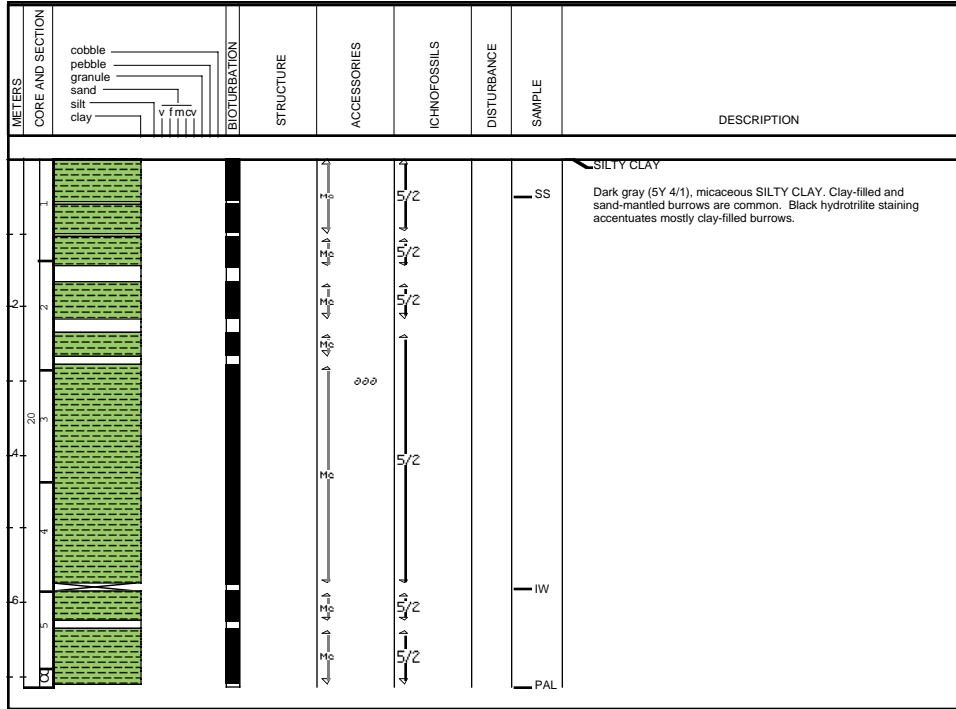
1073A-19H



Site 1073 Hole A Core 20H

Cored 177.6-185.1 mbsf

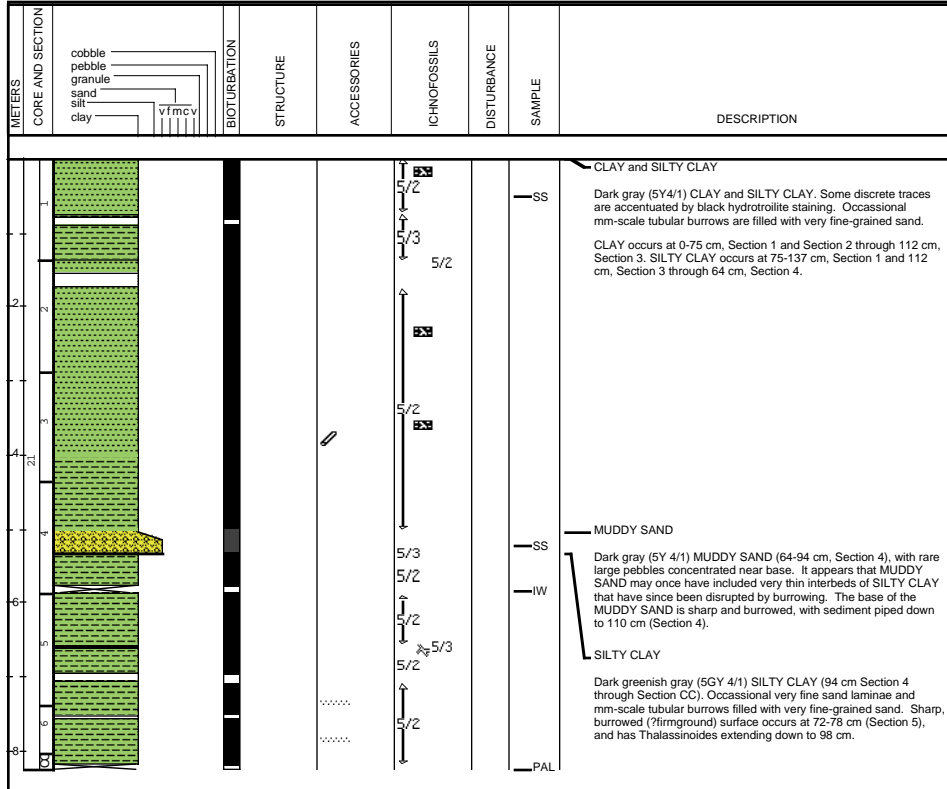
1073A-20H



Site 1073 Hole A Core 21H

Cored 185.1-194.6 mbsf

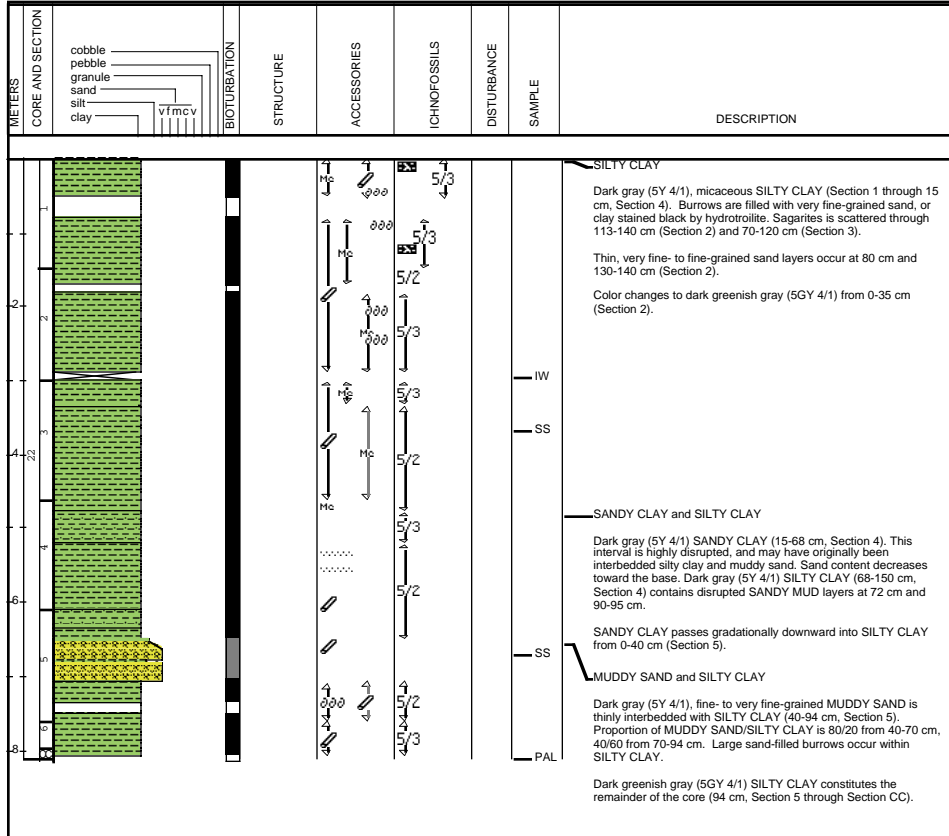
1073A-21H



Site 1073 Hole A Core 22H

Cored 194.6-202.8 mbsf

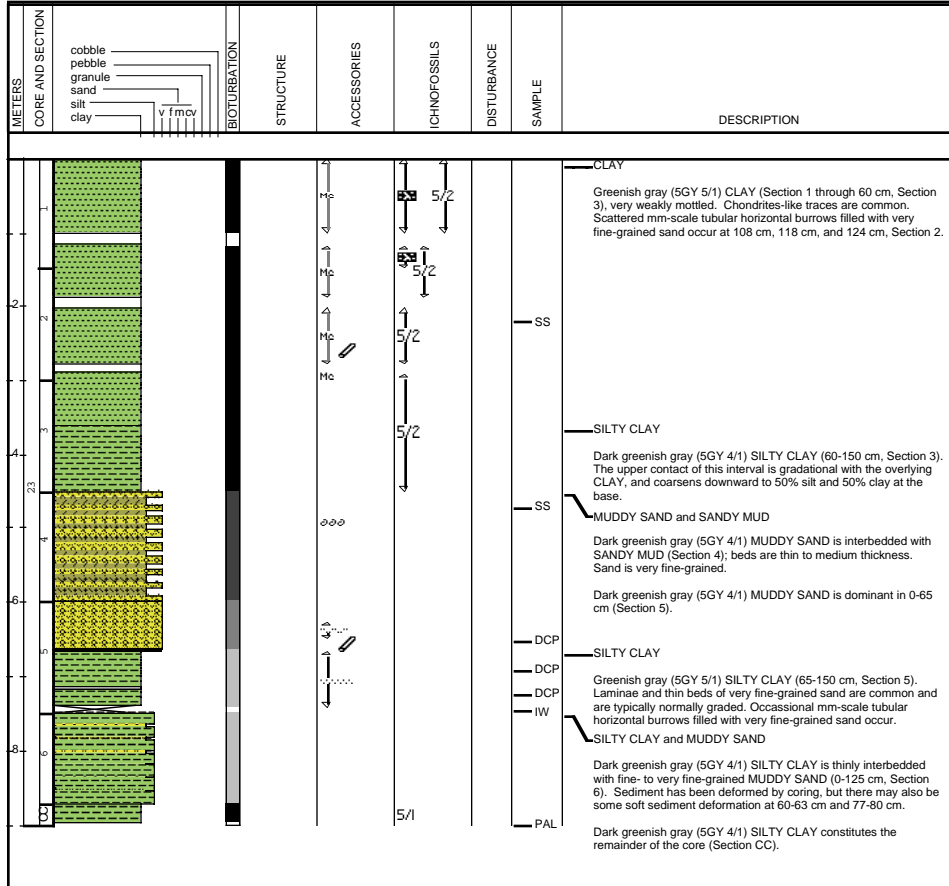
1073A-22H



Site 1073 Hole A Core 23H

Cored 202.8-211.8 mbsf

1073A-23H



Site 1073 Hole A Core 24H

Cored 211.8-215.7 mbsf

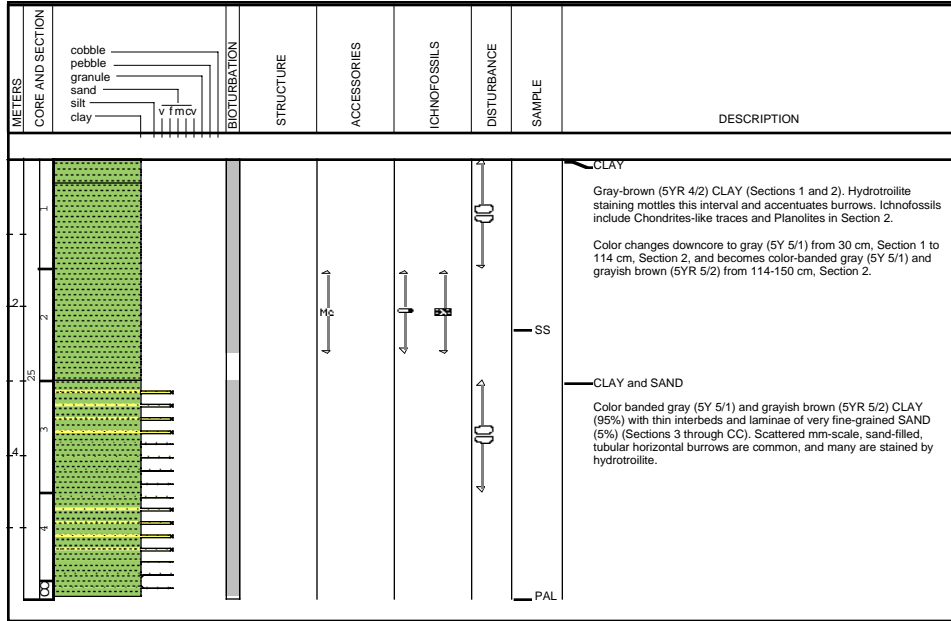
1073A-24H

METERS	CORE AND SECTION	BIOTURBATION	STRUCTURE	ACCESSORIES	ICHTHOFOSSILS	DISTURBANCE	SAMPLE	DESCRIPTION
							<p>IW</p> <p>SS</p> <p>PAL</p>	<p>SILTY CLAY and SAND</p> <p>Gray (5Y 5/1) SILTY CLAY with thin, very fine-grained SAND interbeds. Sand layers have shape bases. Hydrotroilite picks out 0.5 cm thick beds below 40 cm (Section 1); each bed is spaced about 0.5 cm apart. This interval consists of 90% SILTY CLAY and 10% SAND.</p>

Site 1073 Hole A Core 25X

Cored 215.7-224.4 mbsf

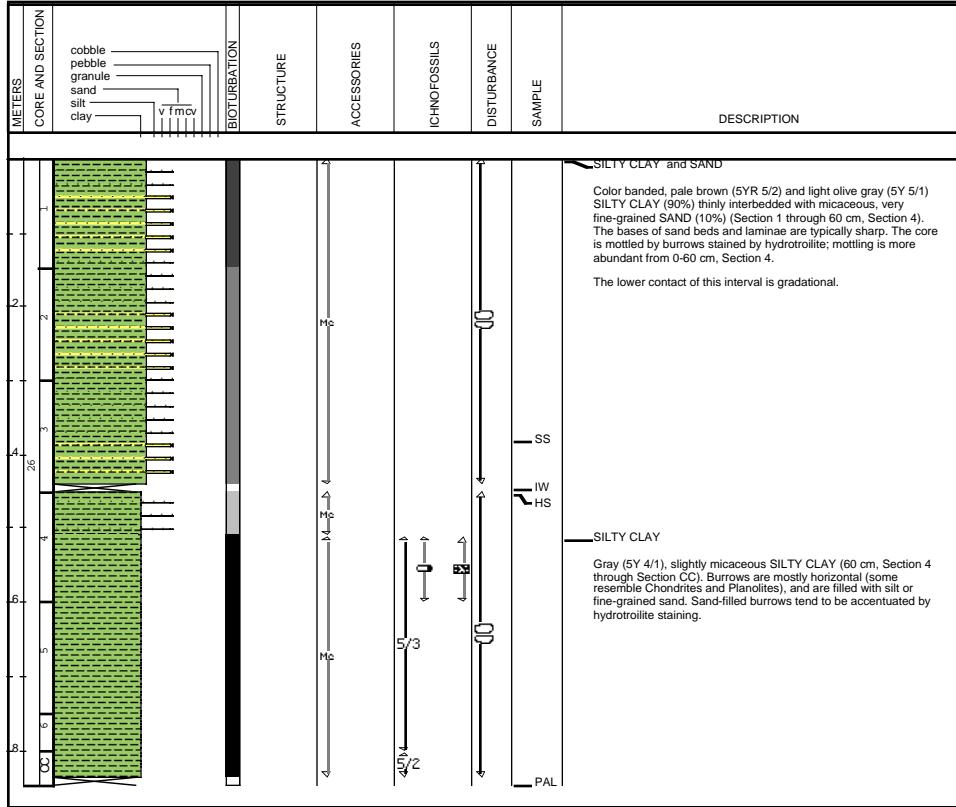
1073A-25X



Site 1073 Hole A Core 26X

Cored 224.4-233.9 mbsf

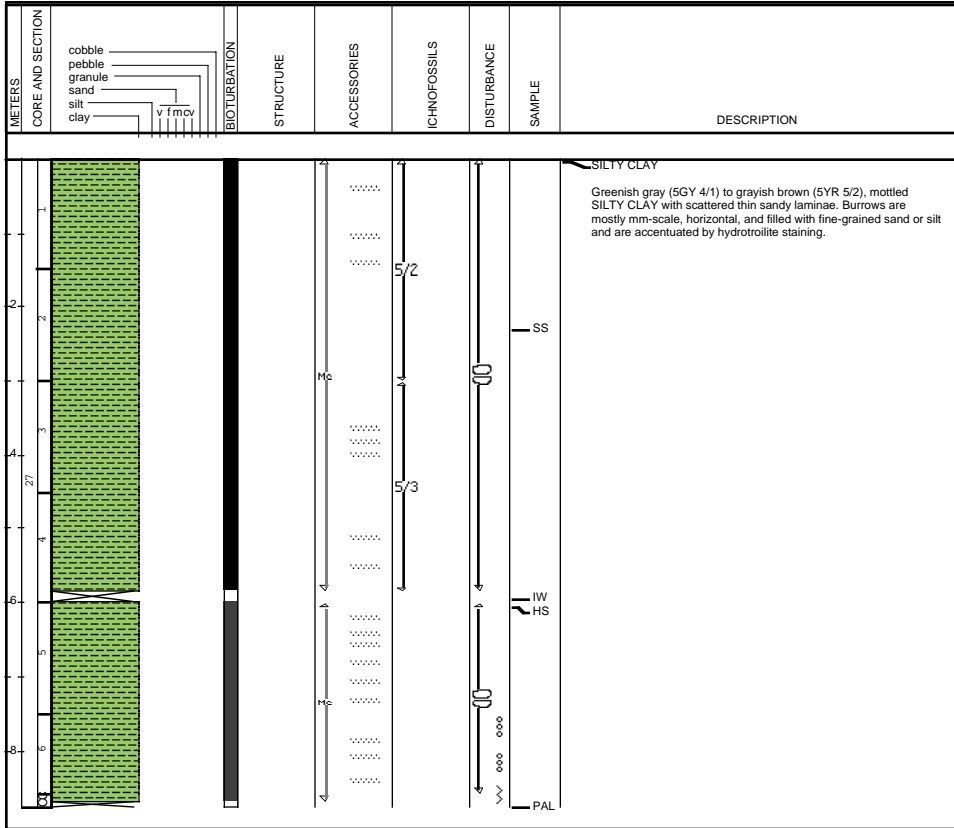
1073A-26X



Site 1073 Hole A Core 27X

Cored 233.9-243.5 mbsf

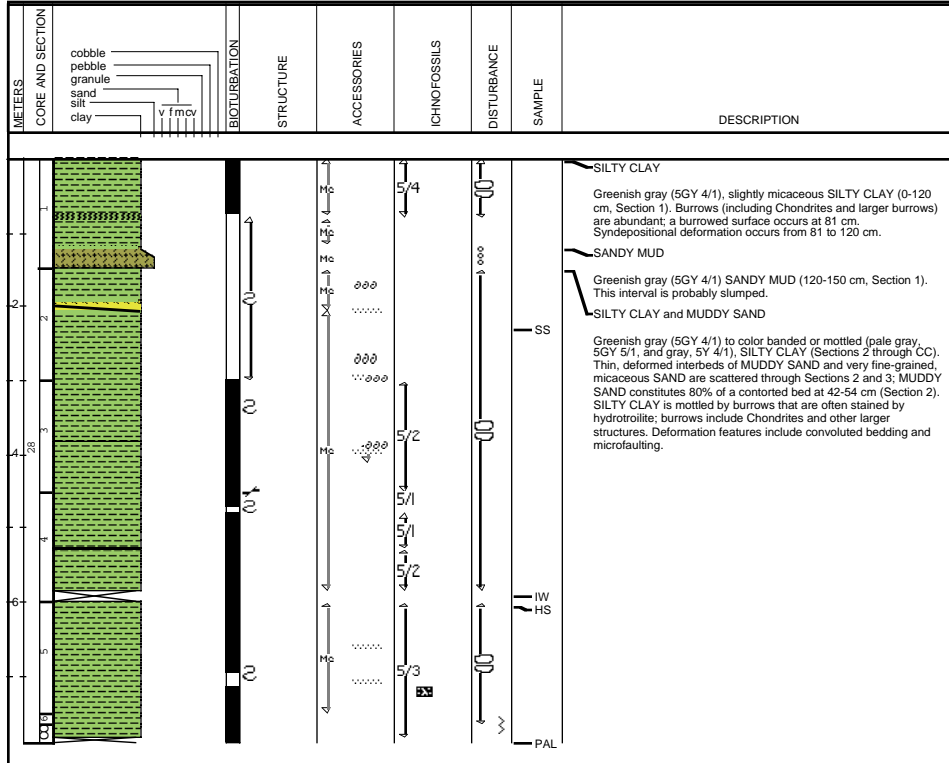
1073A-27X



Site 1073 Hole A Core 28X

Cored 243.5-253.0 mbsf

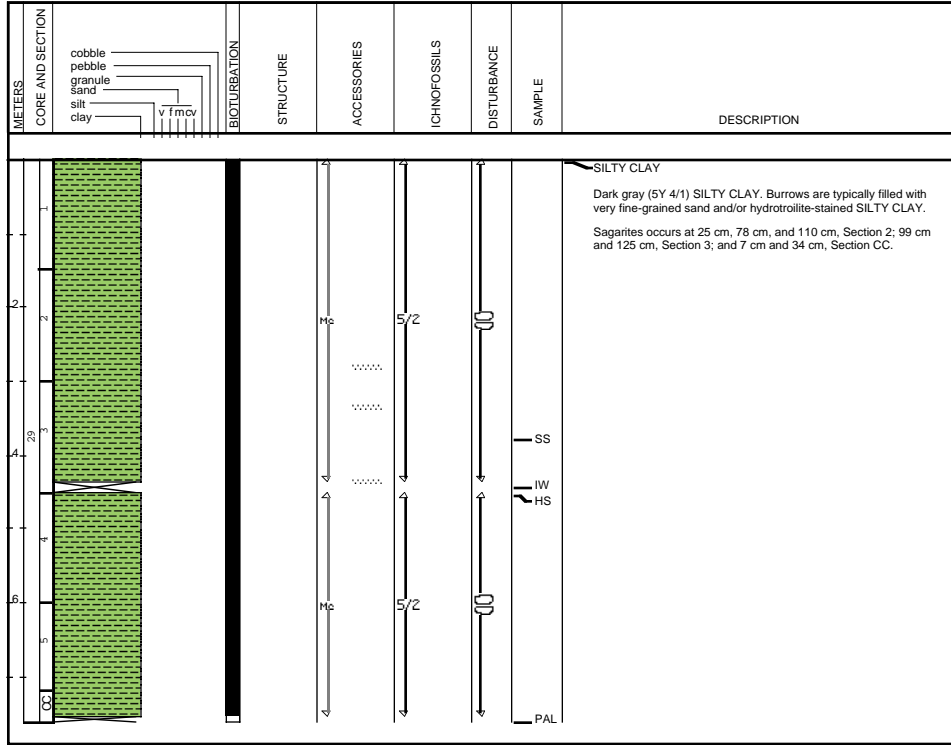
1073A-28X



Site 1073 Hole A Core 29X

Cored 253.0-262.5 mbsf

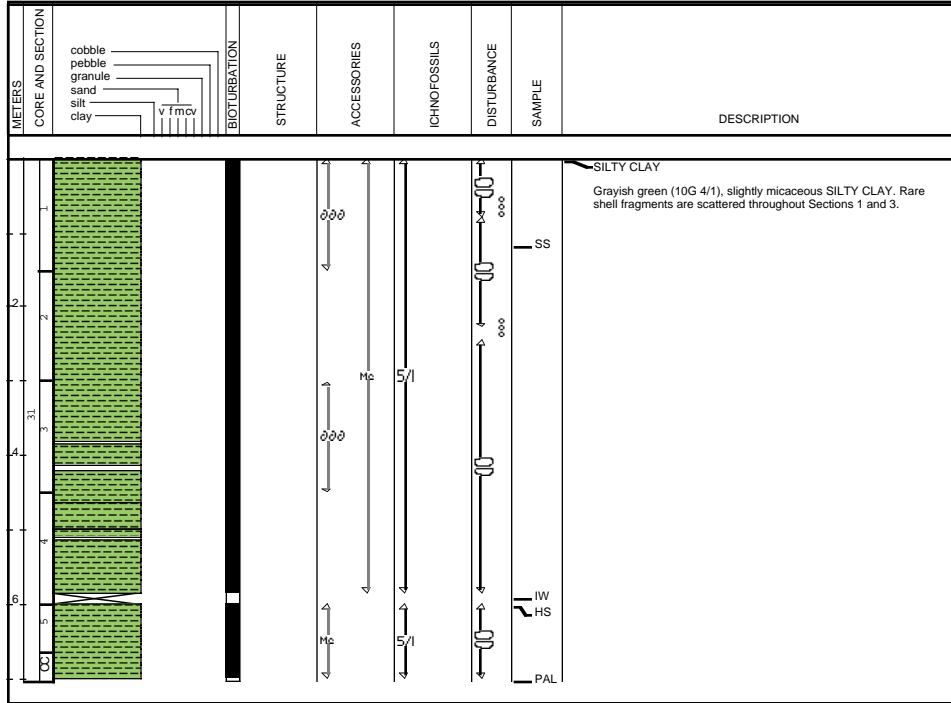
1073A-29X



Site 1073 Hole A Core 31X

Cored 272.0-281.4 mbsf

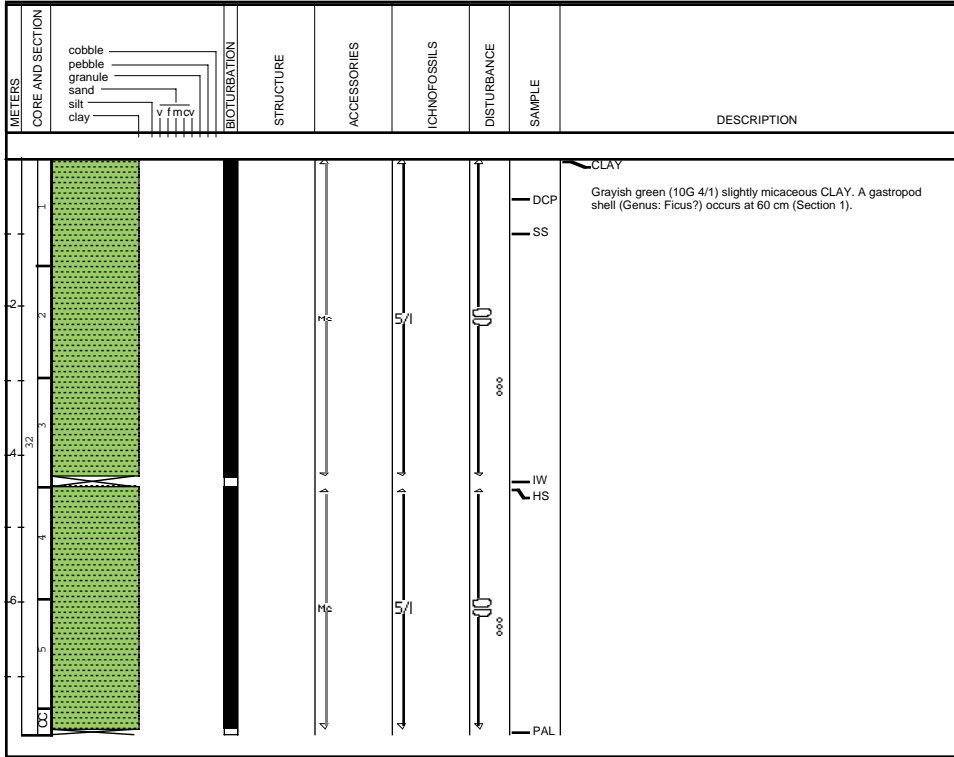
1073A-31X



Site 1073 Hole A Core 32X

Cored 281.4-290.7 mbsf

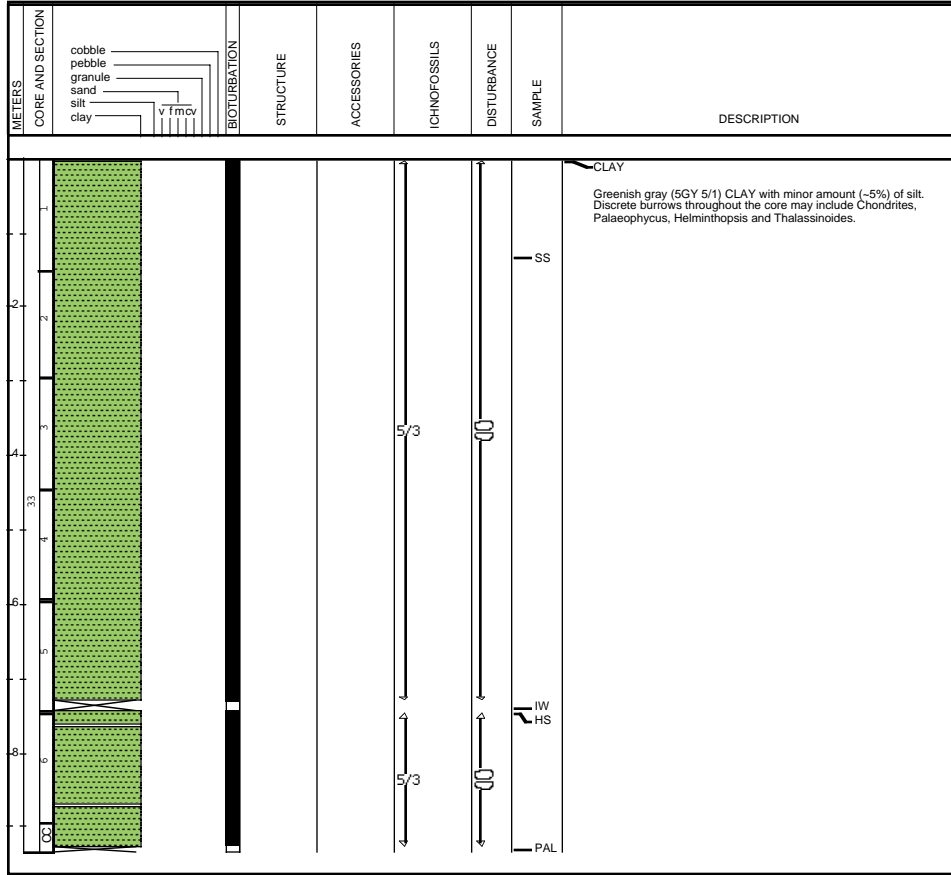
1073A-32X



Site 1073 Hole A Core 33X

Cored 290.7-300.1 mbsf

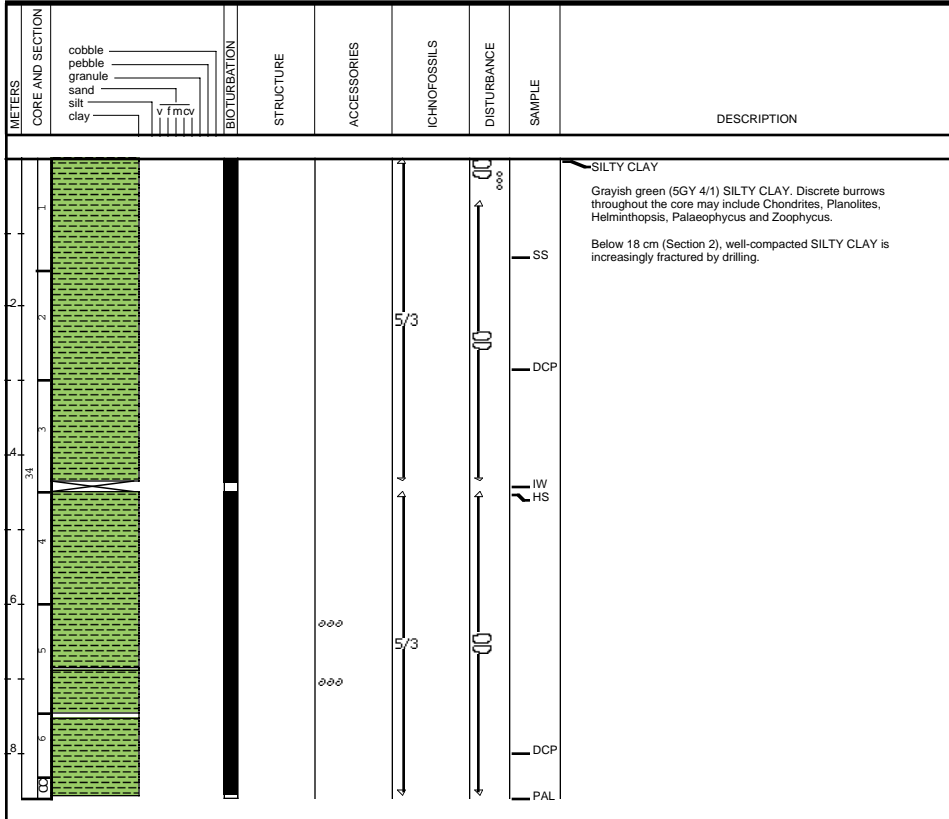
1073A-33X



Site 1073 Hole A Core 34X

Cored 300.1-309.5 mbsf

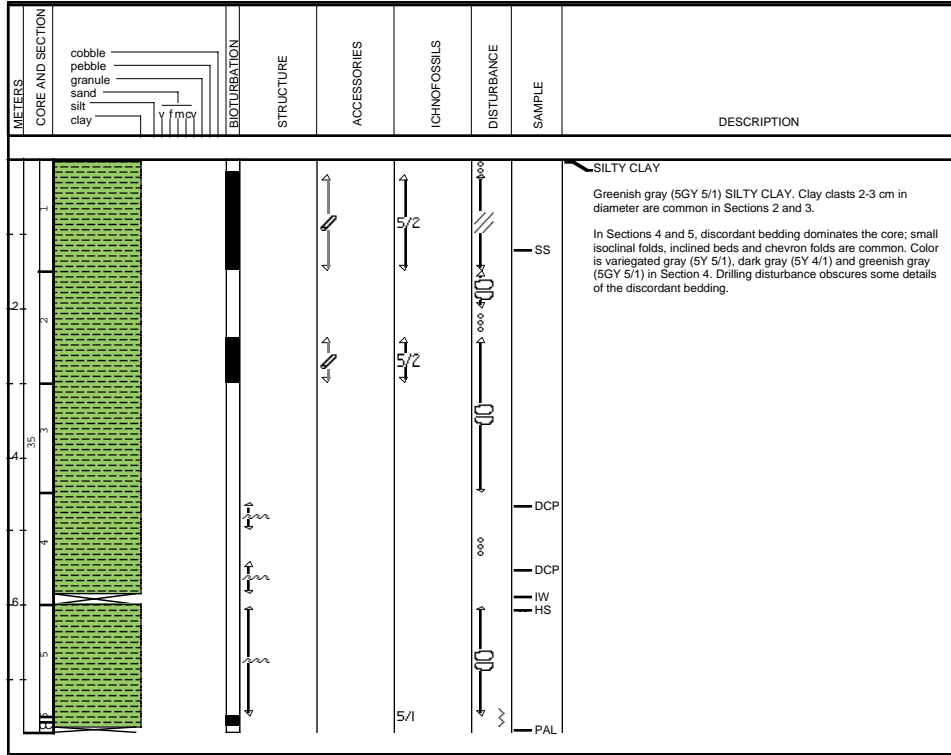
1073A-34X



Site 1073 Hole A Core 35X

Cored 309.5-318.4 mbsf

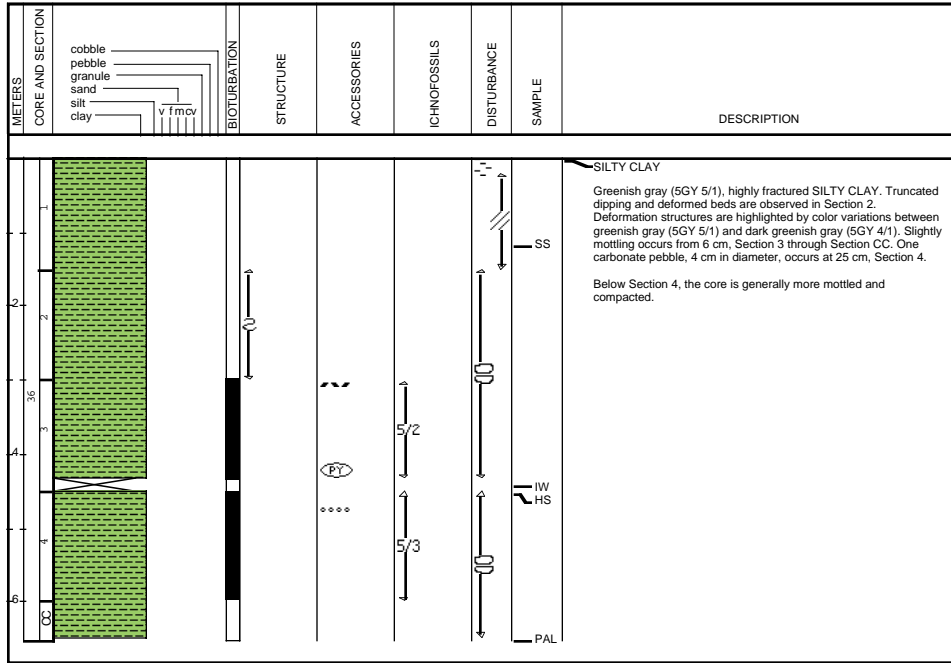
1073A-35X



Site 1073 Hole A Core 36X

Cored 318.4-327.8 mbsf

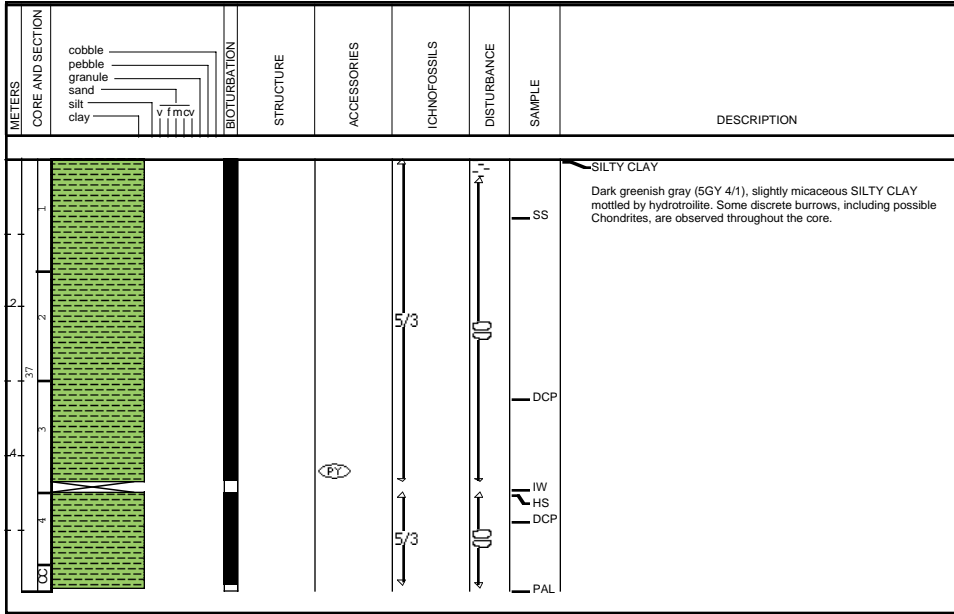
1073A-36X



Site 1073 Hole A Core 37X

Cored 327.8-337.2 mbsf

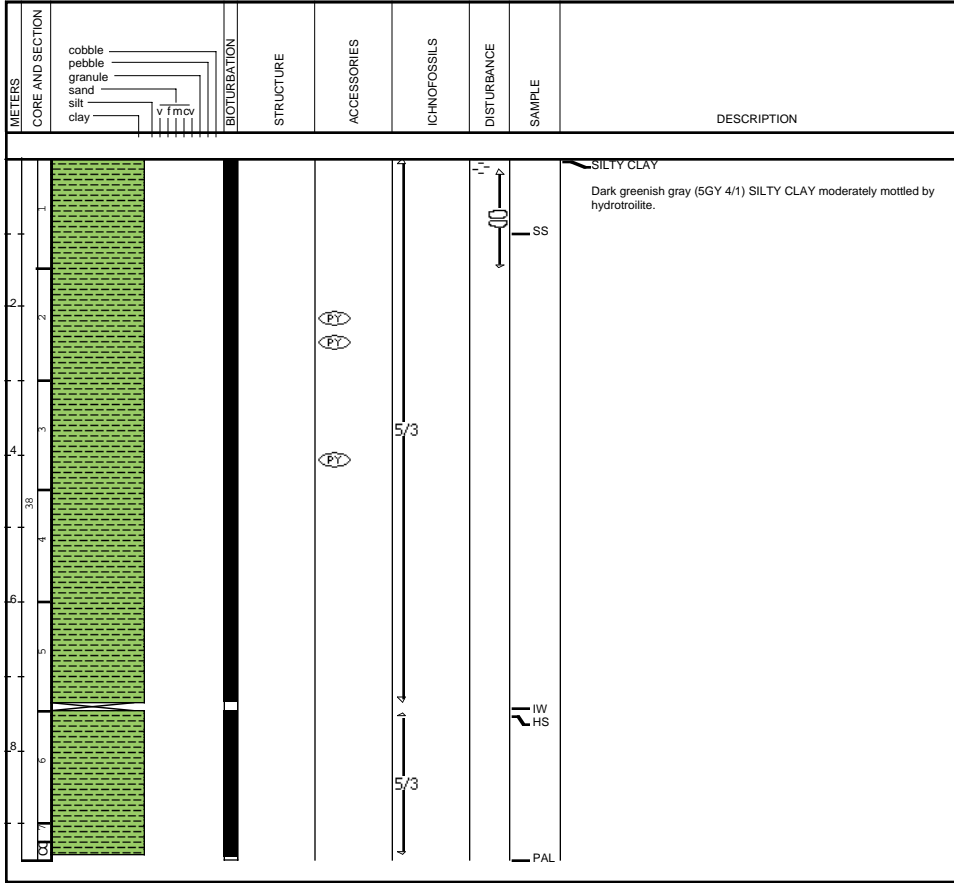
1073A-37X



Site 1073 Hole A Core 38X

Cored 337.2-346.6 mbsf

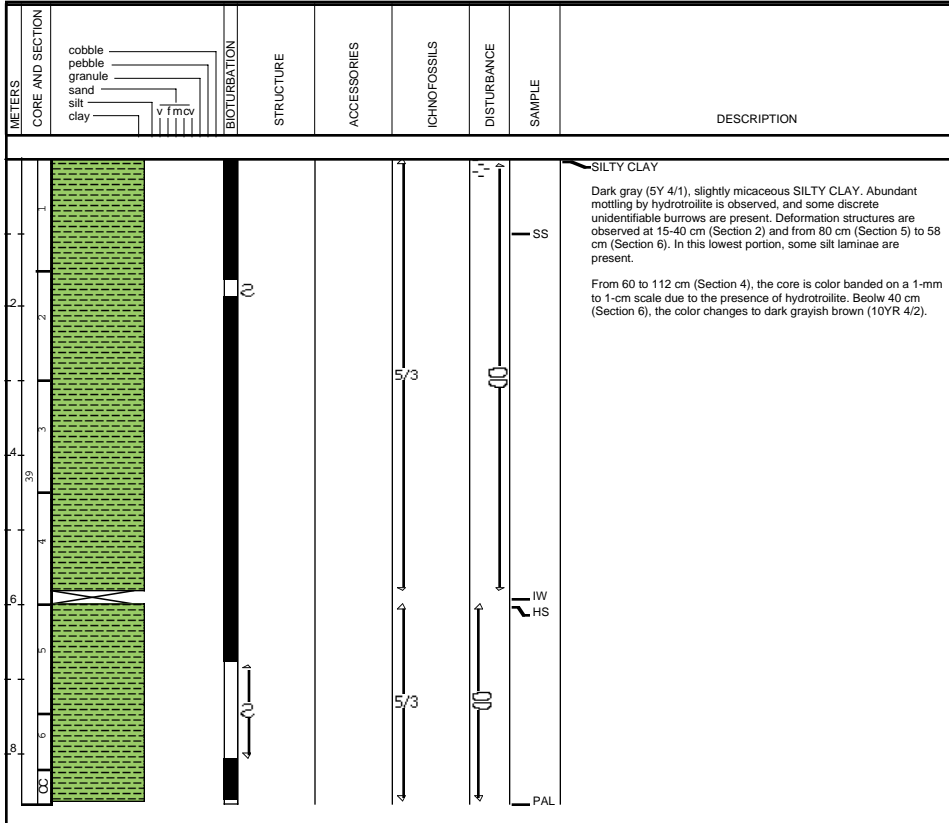
1073A-38X



Site 1073 Hole A Core 39X

Cored 346.6-356.0 mbsf

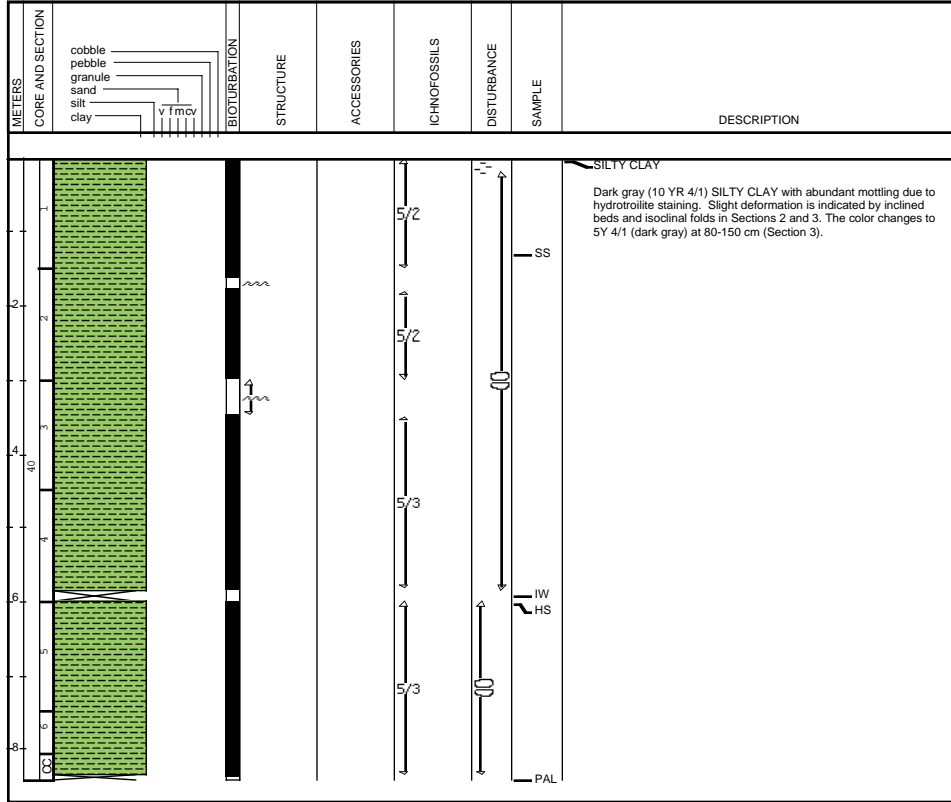
1073A-39X



Site 1073 Hole A Core 40X

Cored 356.0-365.4 mbsf

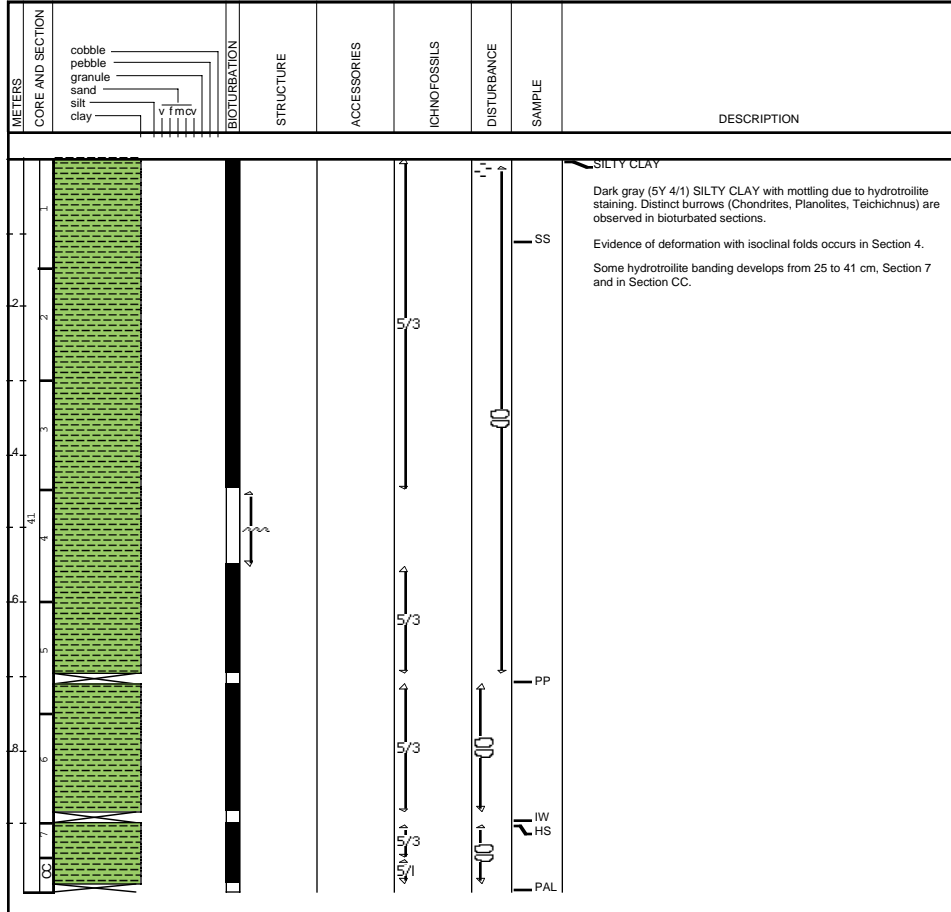
1073A-40X



Site 1073 Hole A Core 41X

Cored 365.4-374.9 mbsf

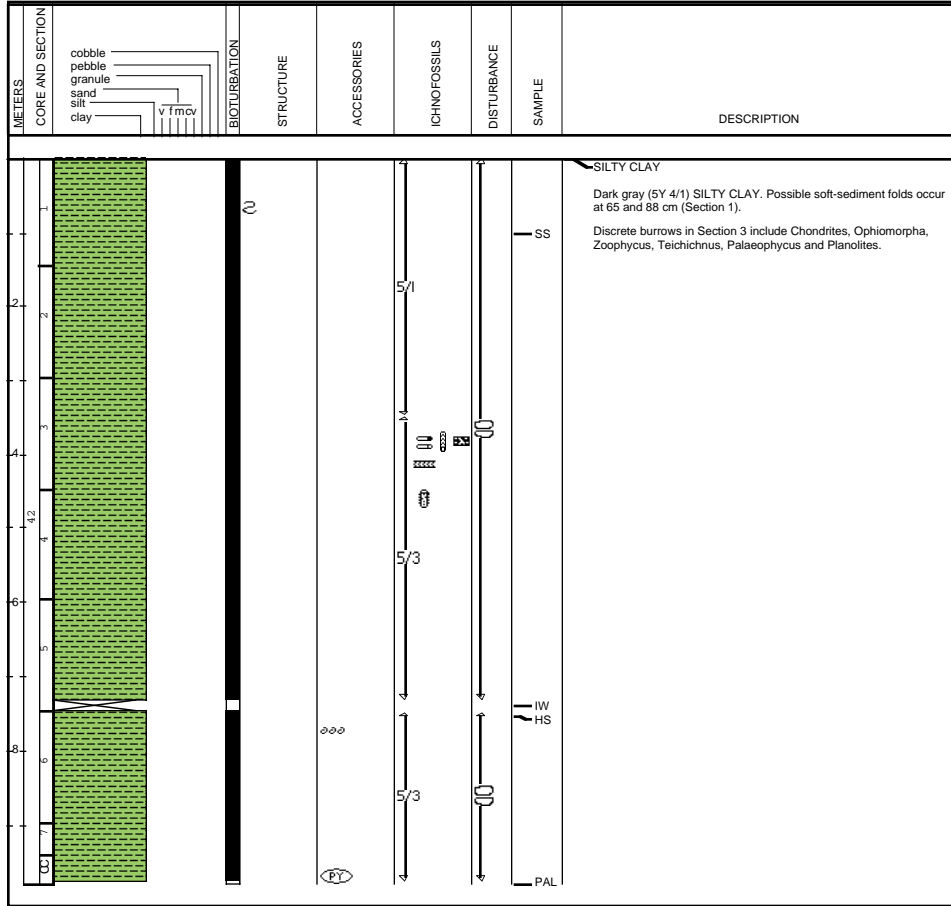
1073A-41X



Site 1073 Hole A Core 42X

Cored 374.9-384.3 mbsf

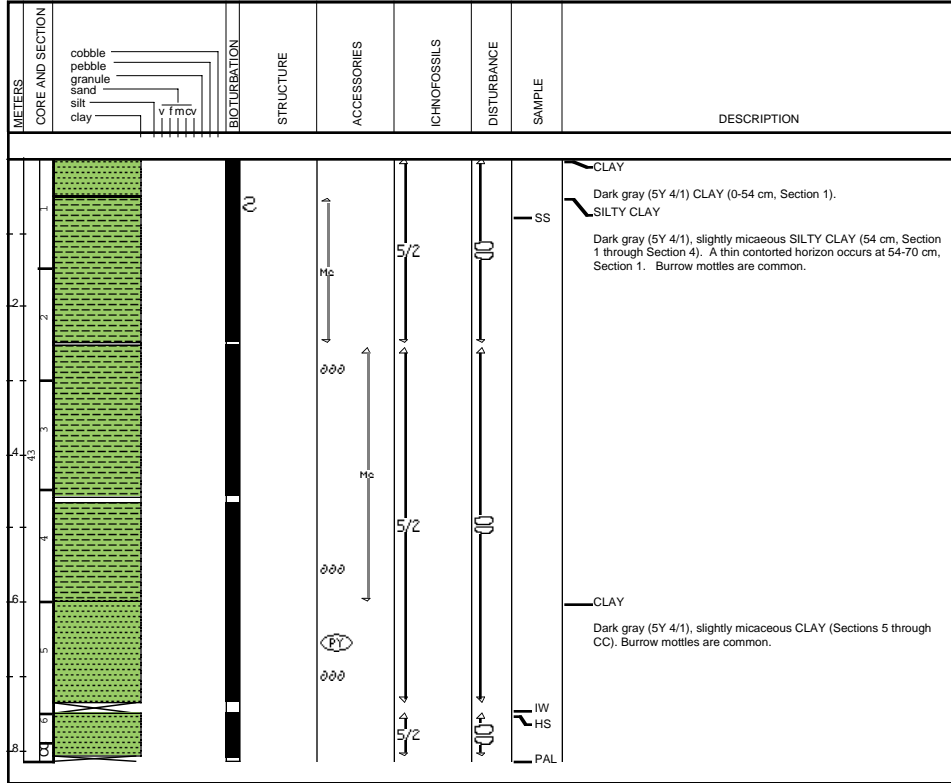
1073A-42X



Site 1073 Hole A Core 43X

384.3-393.6 mbsf

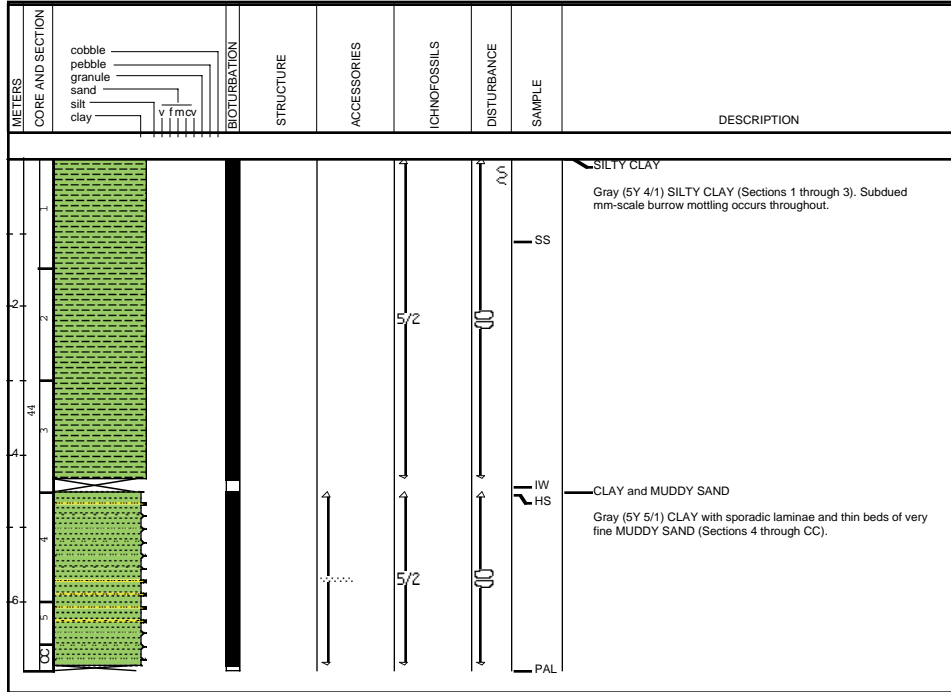
1073A-43X



Site 1073 Hole A Core 44X

Cored 393.6-402.5 mbsf

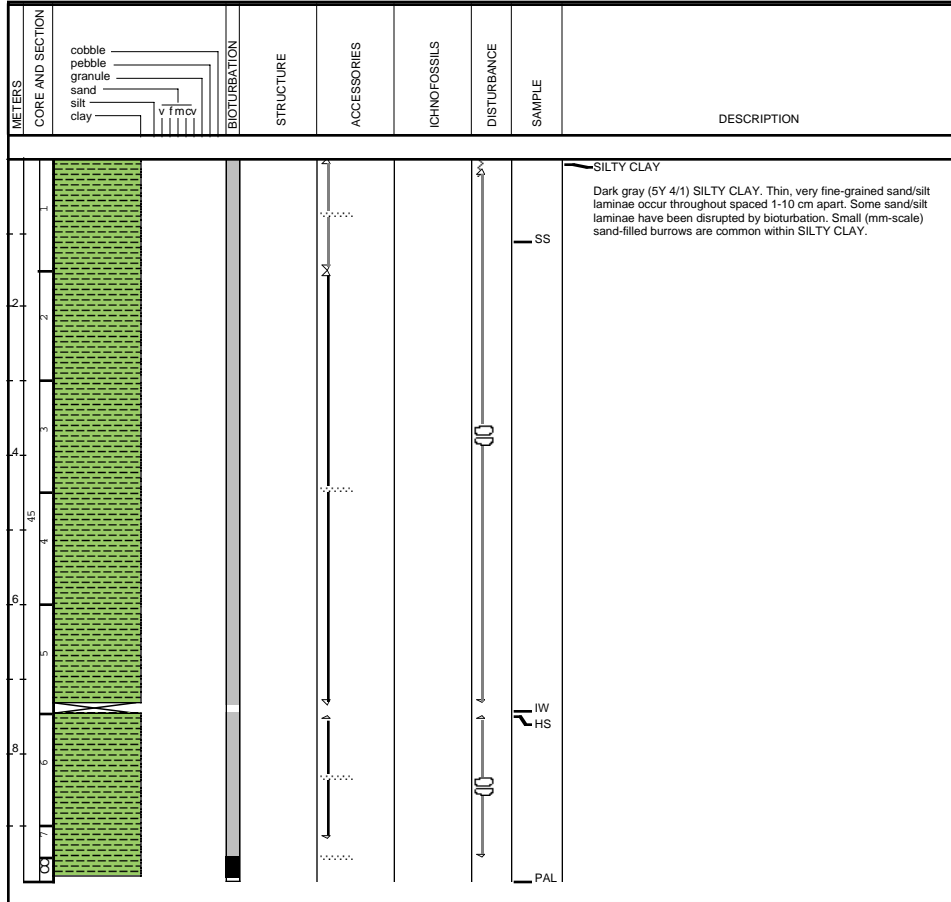
1073A-44X



Site 1073 Hole A Core 45X

Cored 402.5-411.9 mbsf

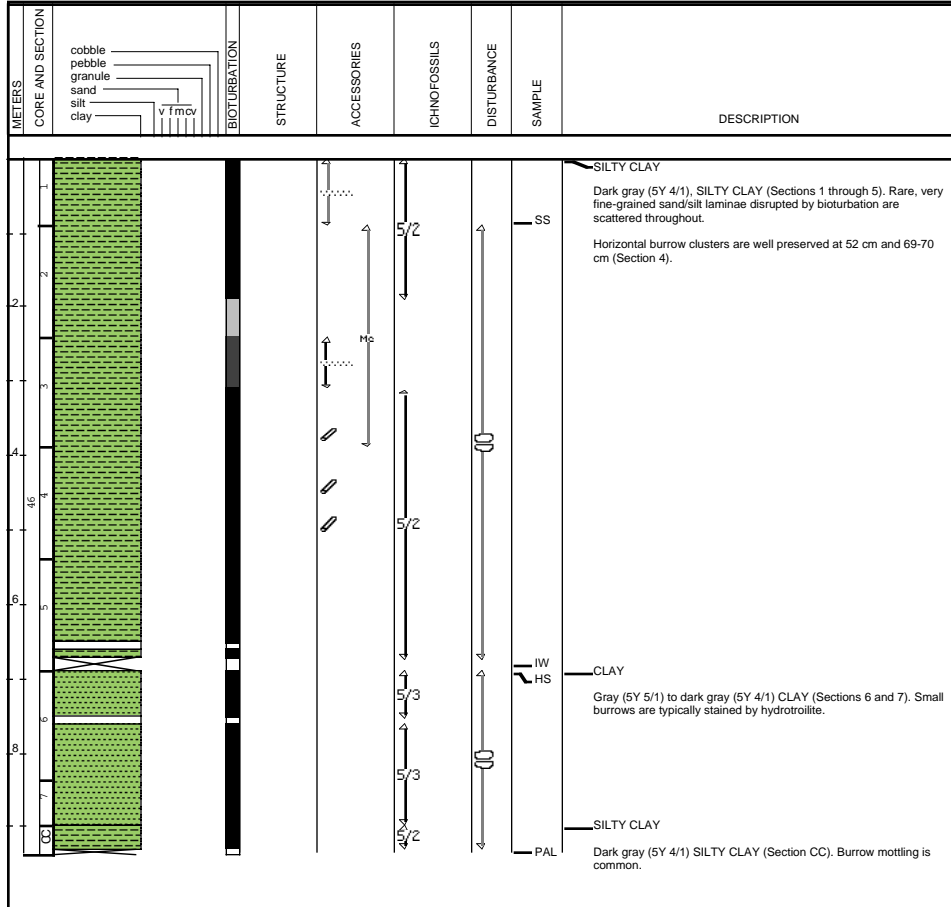
1073A-45X



Site 1073 Hole A Core 46X

Cored 411.9-421.5 mbsf

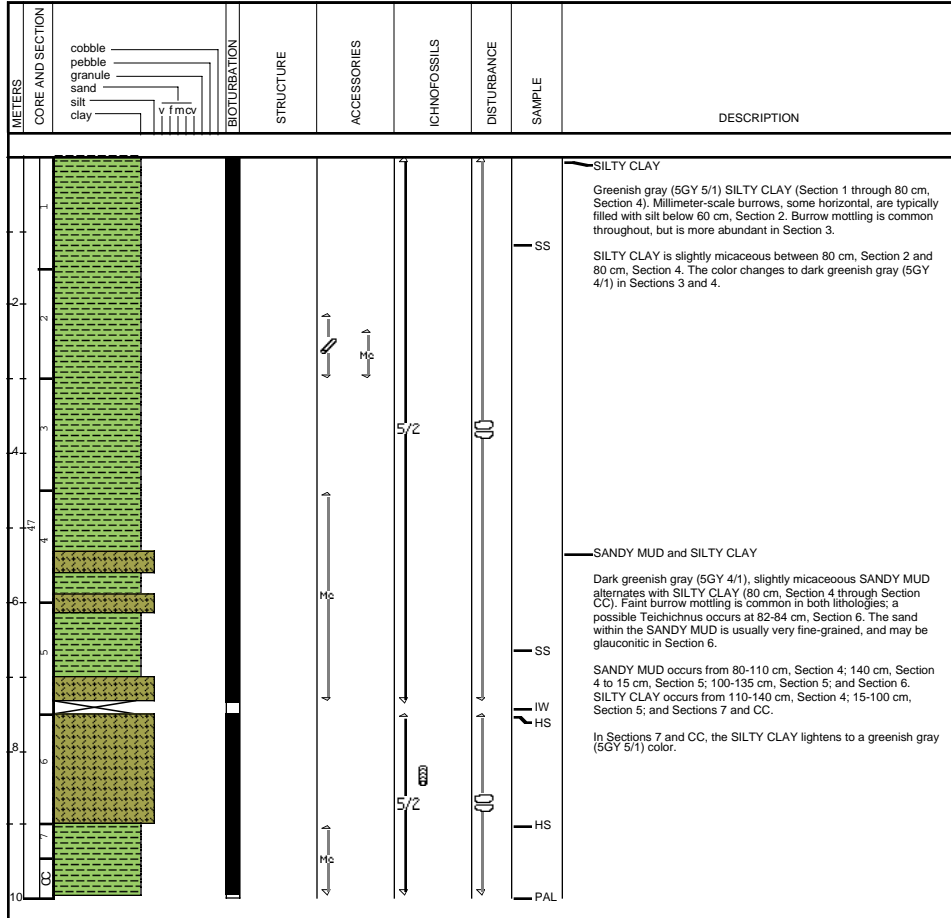
1073A-46X



Site 1073 Hole A Core 47X

Cored 421.5-430.9 mbsf

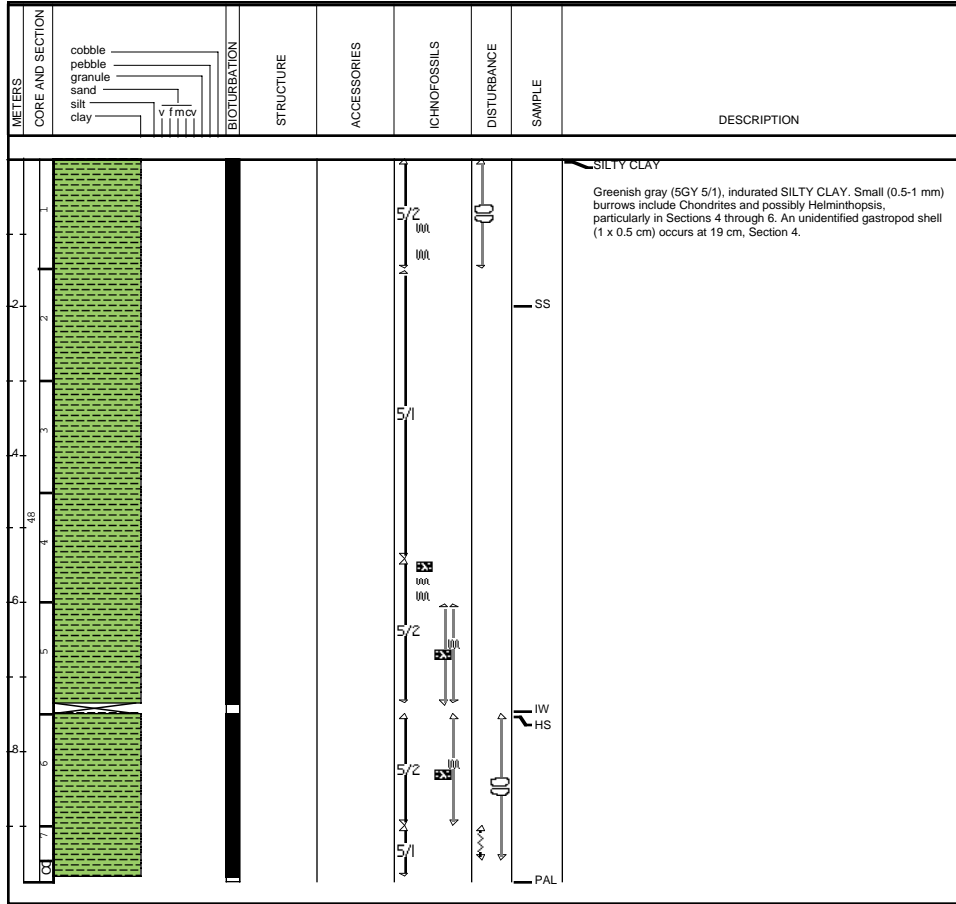
1073A-47X



Site 1073 Hole A Core 48X

Cored 430.9-440.4 mbsf

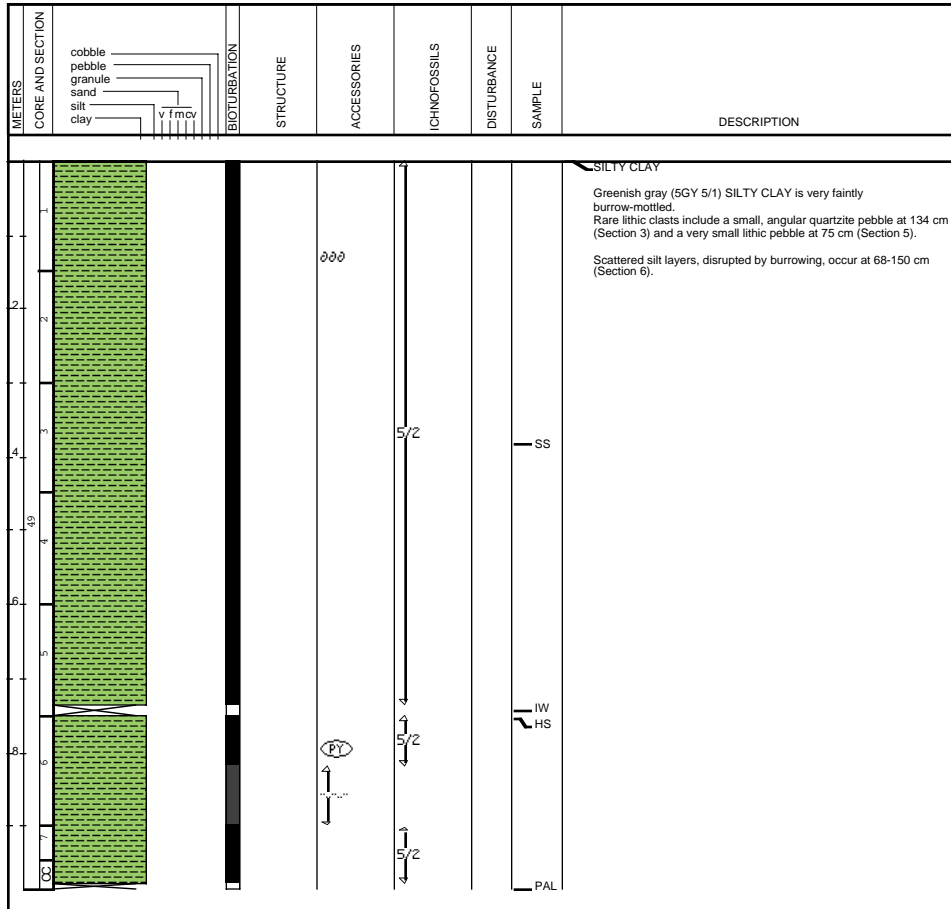
1073A-48X



Site 1073 Hole A Core 49X

Cored 440.4-449.9 mbsf

1073A-49X



SILTY CLAY
 Greenish gray (5GY 5/1) SILTY CLAY is very faintly burrow-mottled.
 Rare lithic clasts include a small, angular quartzite pebble at 134 cm (Section 3) and a very small lithic pebble at 75 cm (Section 5).
 Scattered silt layers, disrupted by burrowing, occur at 68-150 cm (Section 6).

∅∅∅

5/2

SS

RY

5/2

IW
HS

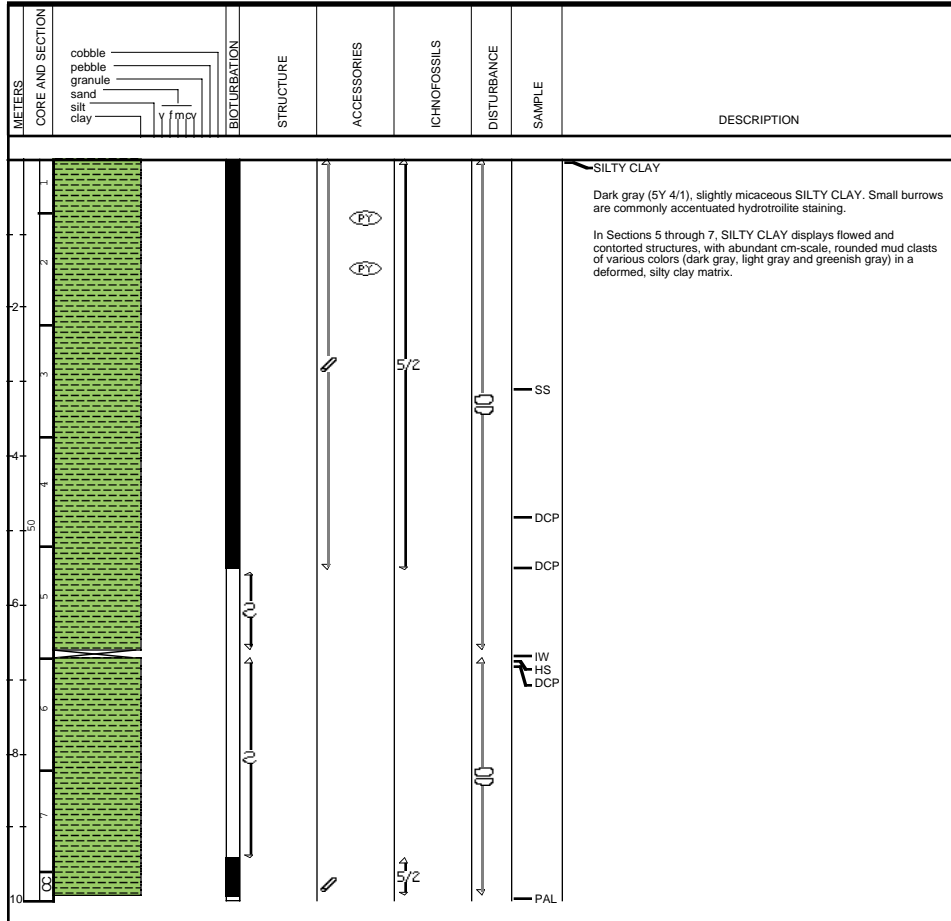
5/2

PAL

Site 1073 Hole A Core 50X

Cored 449.9-459.3 mbsf

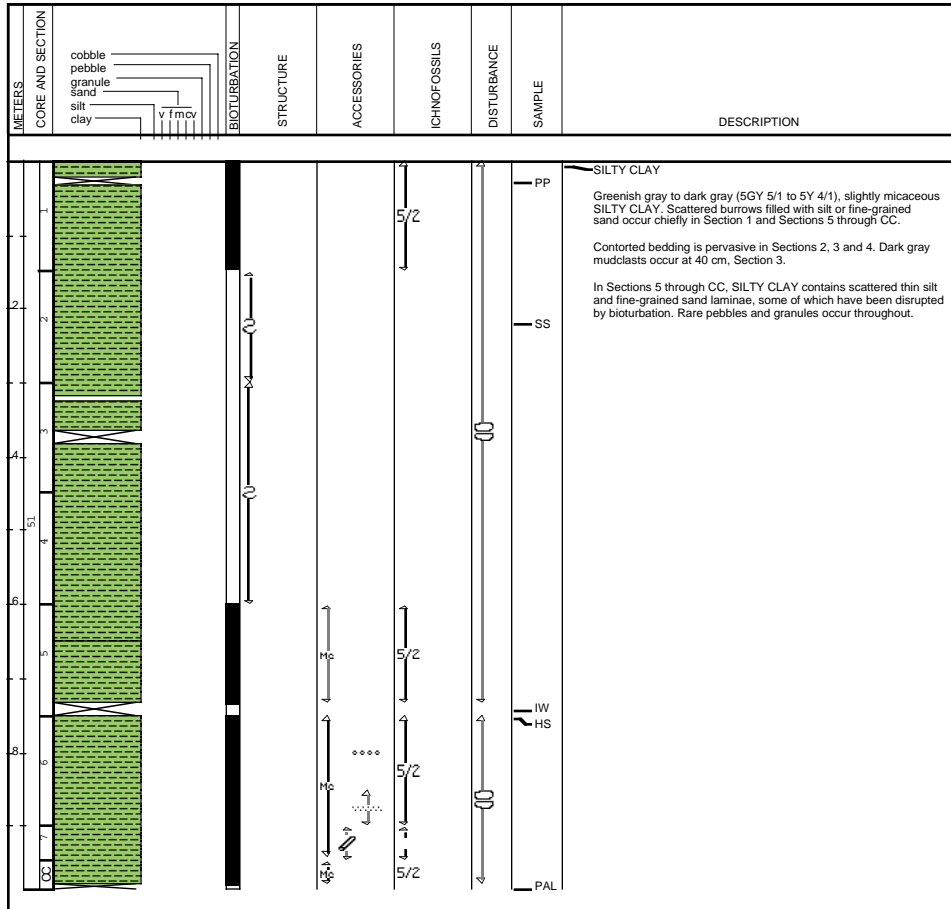
1073A-50X



Site 1073 Hole A Core 51X

Cored 459.3-468.2 mbsf

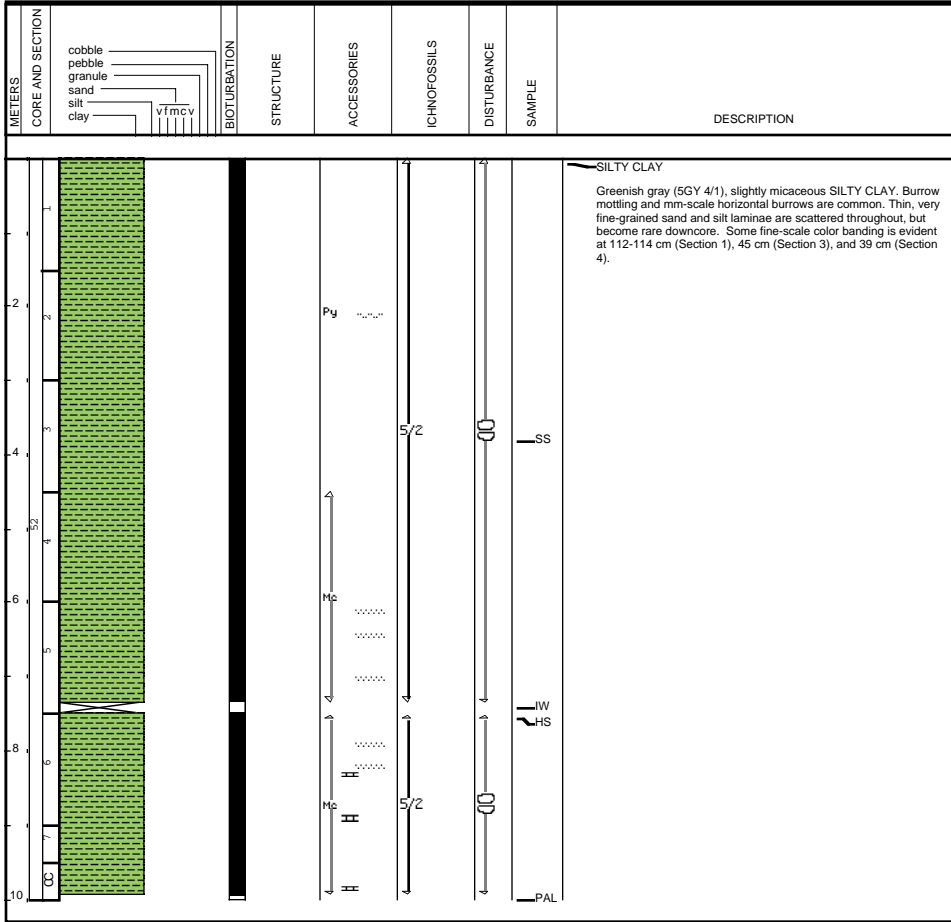
1073A-51X



Site 1073 Hole A Core 52X

Cored 468.2-477.6 mbsf

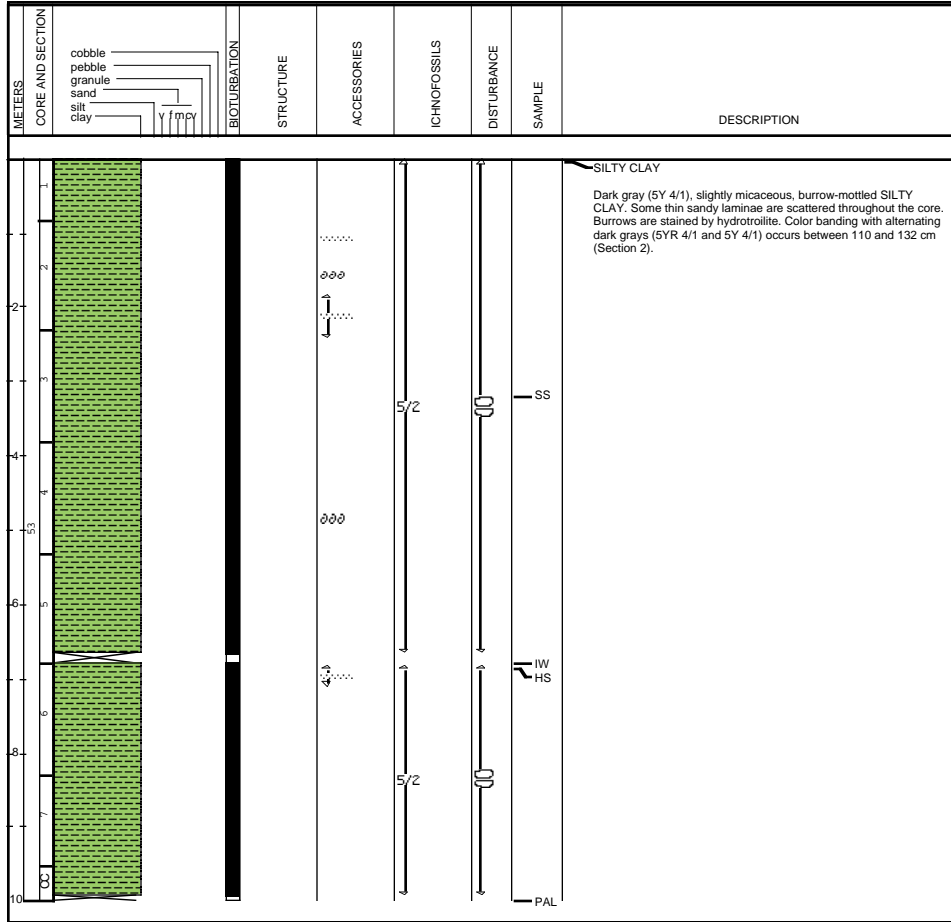
1073A-52X



Site 1073 Hole A Core 53X

Cored 477.6-487.2 mbsf

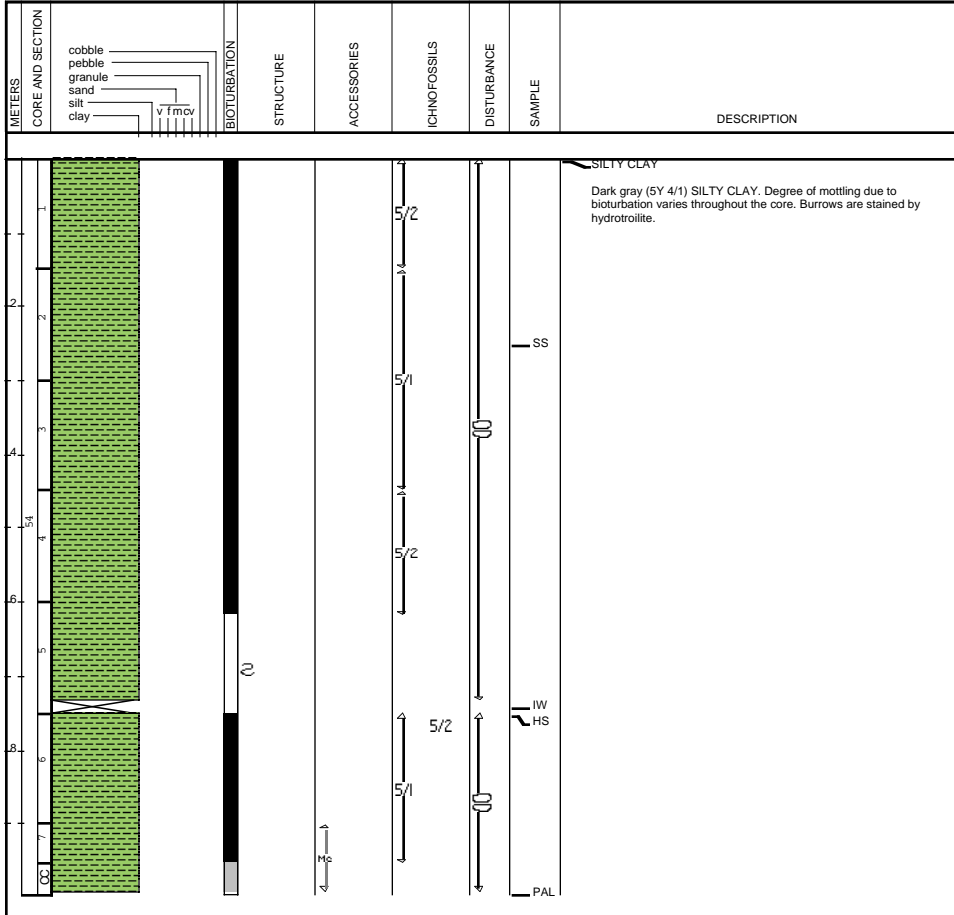
1073A-53X



Site 1073 Hole A Core 54X

Cored 487.2-496.6 mbsf

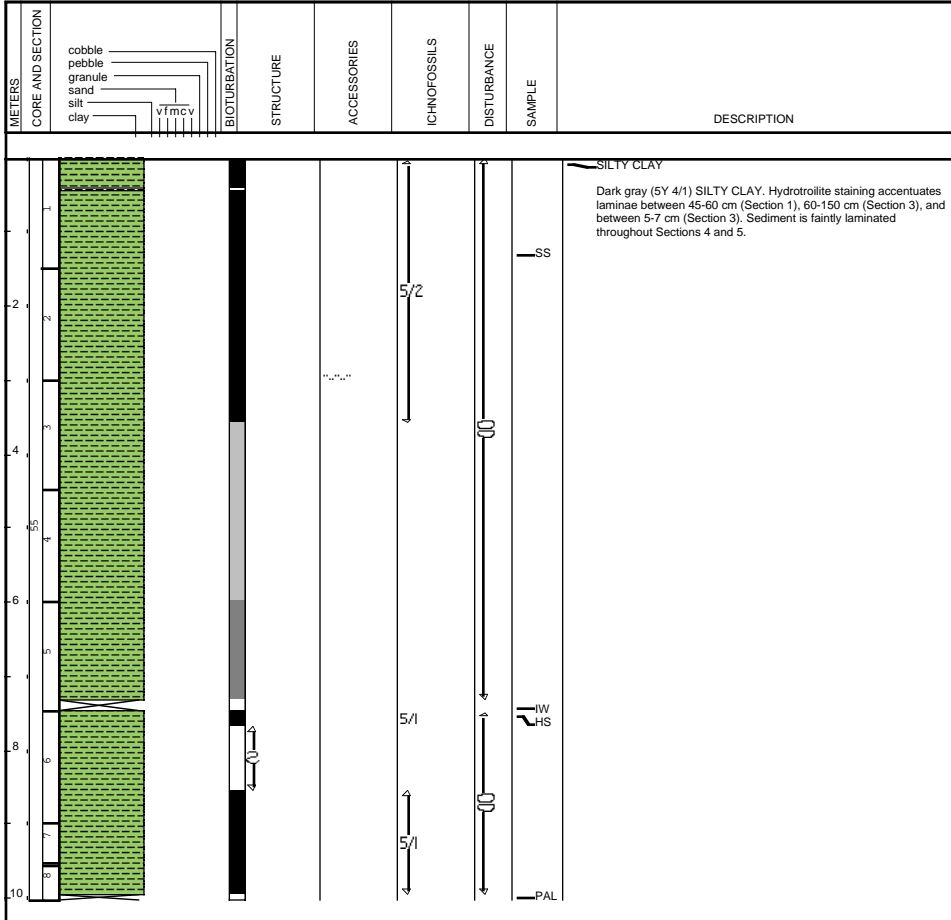
1073A-54X



Site 1073 Hole A Core 55X

Cored 496.6-506.0 mbsf

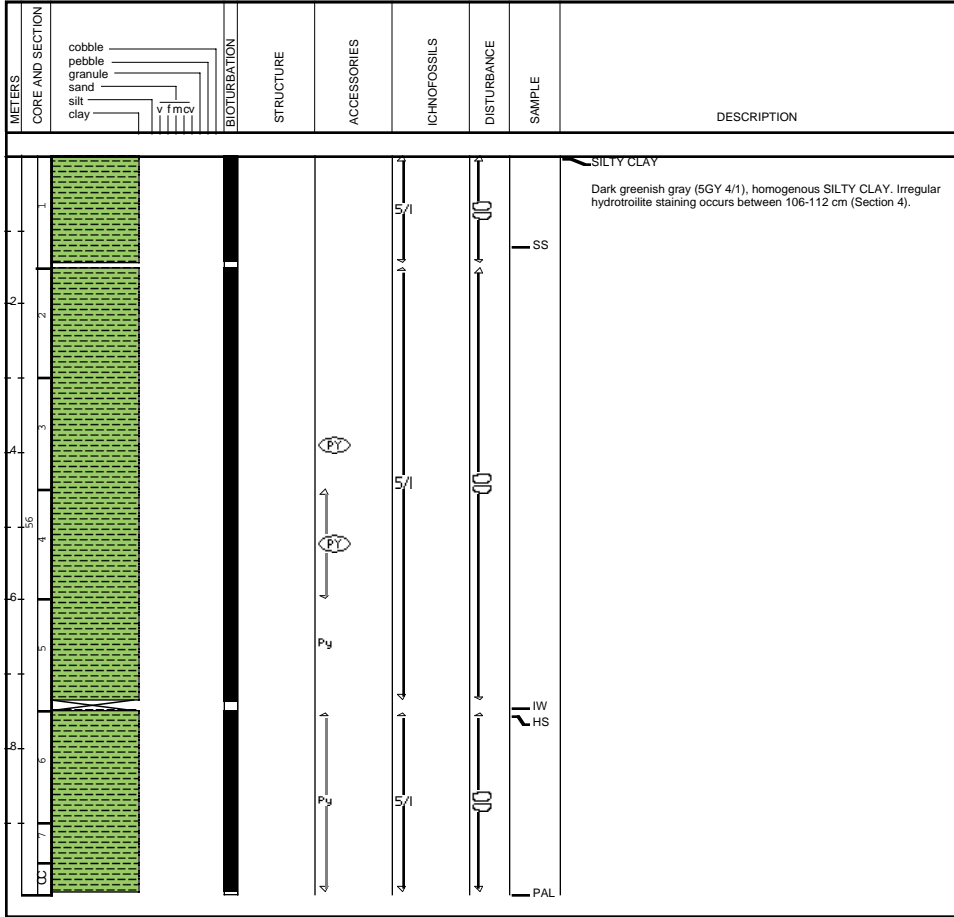
1073A-55X



Site 1073 Hole A Core 56X

Cored 506.0-515.3 mbsf

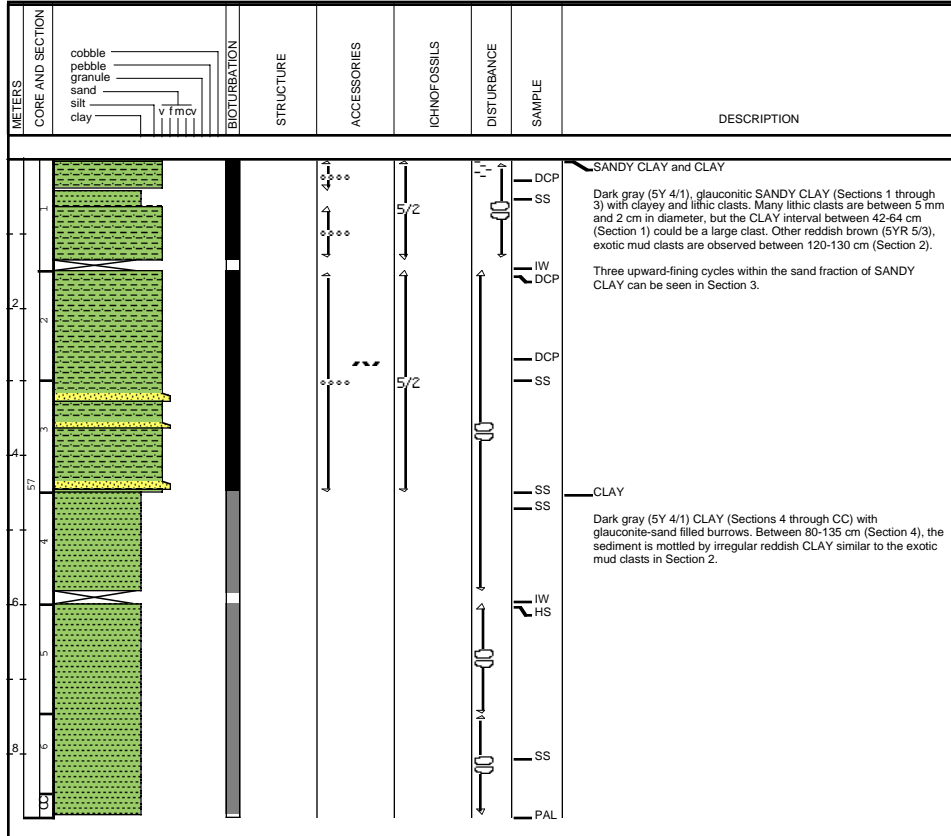
1073A-56X



Site 1073 Hole A Core 57X

Cored 515.3-524.8 mbsf

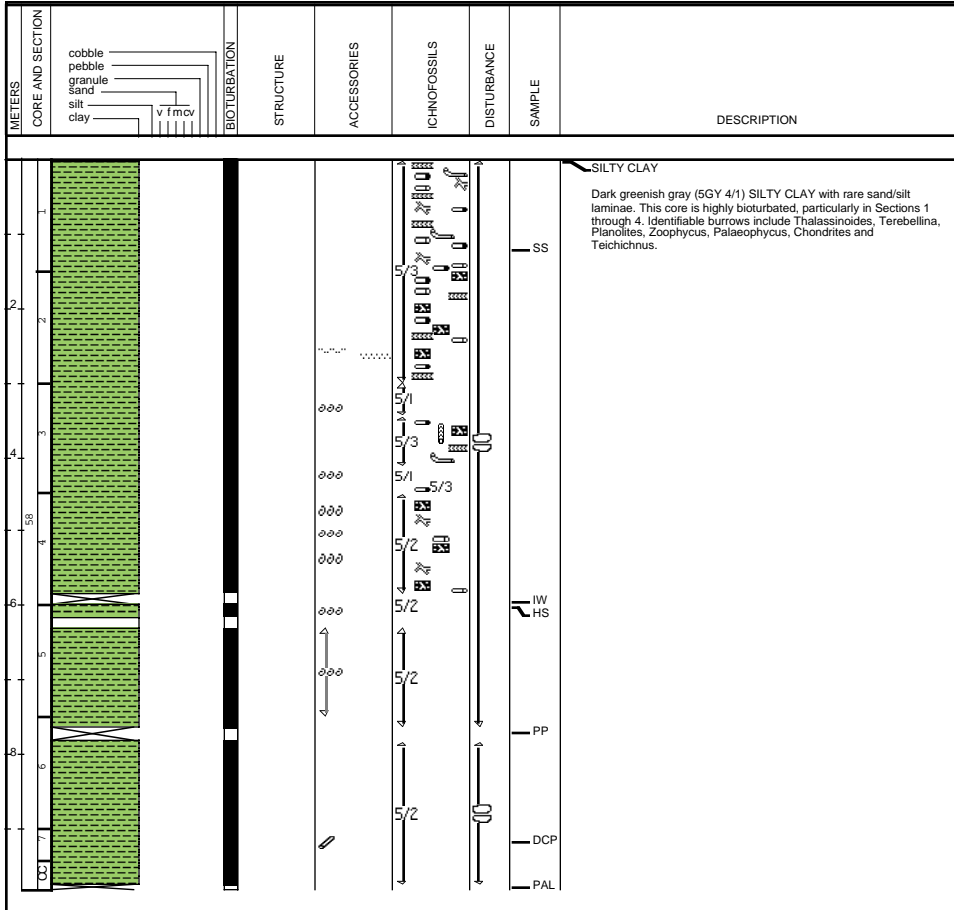
1073A-57X



Site 1073 Hole A Core 58X

Cored 524.8-534.3 mbsf

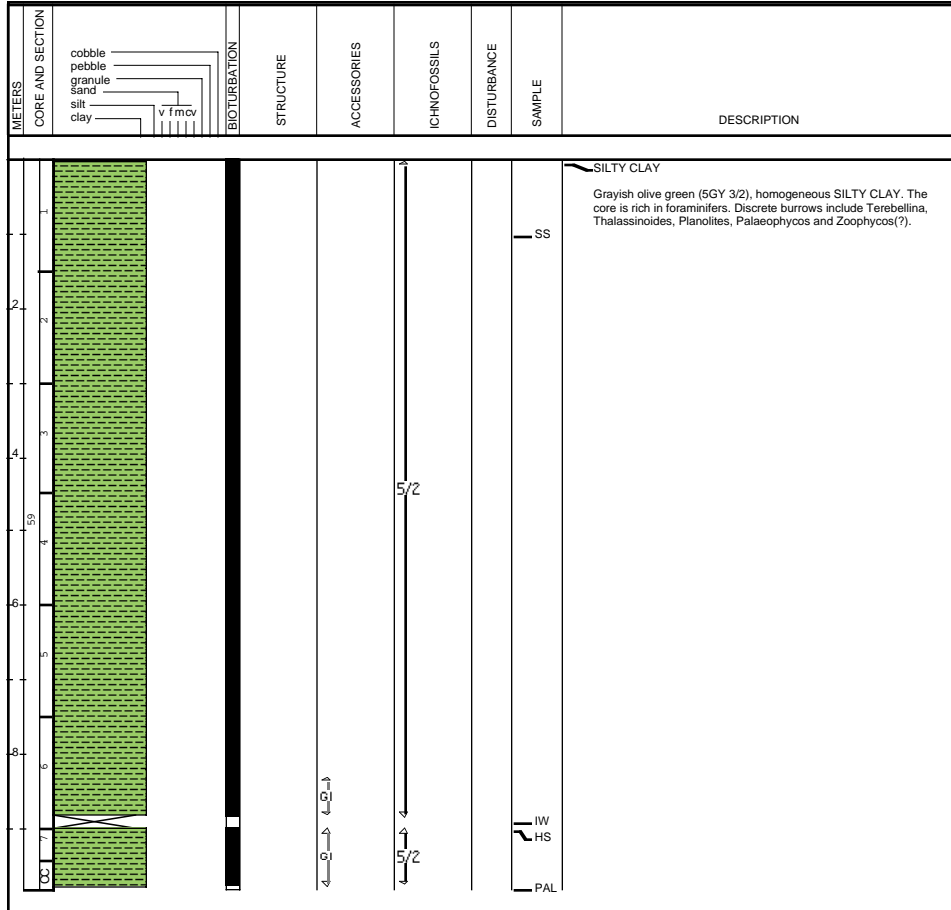
1073A-58X



Site 1073 Hole A Core 59X

Cored 534.3-541.8 mbsf

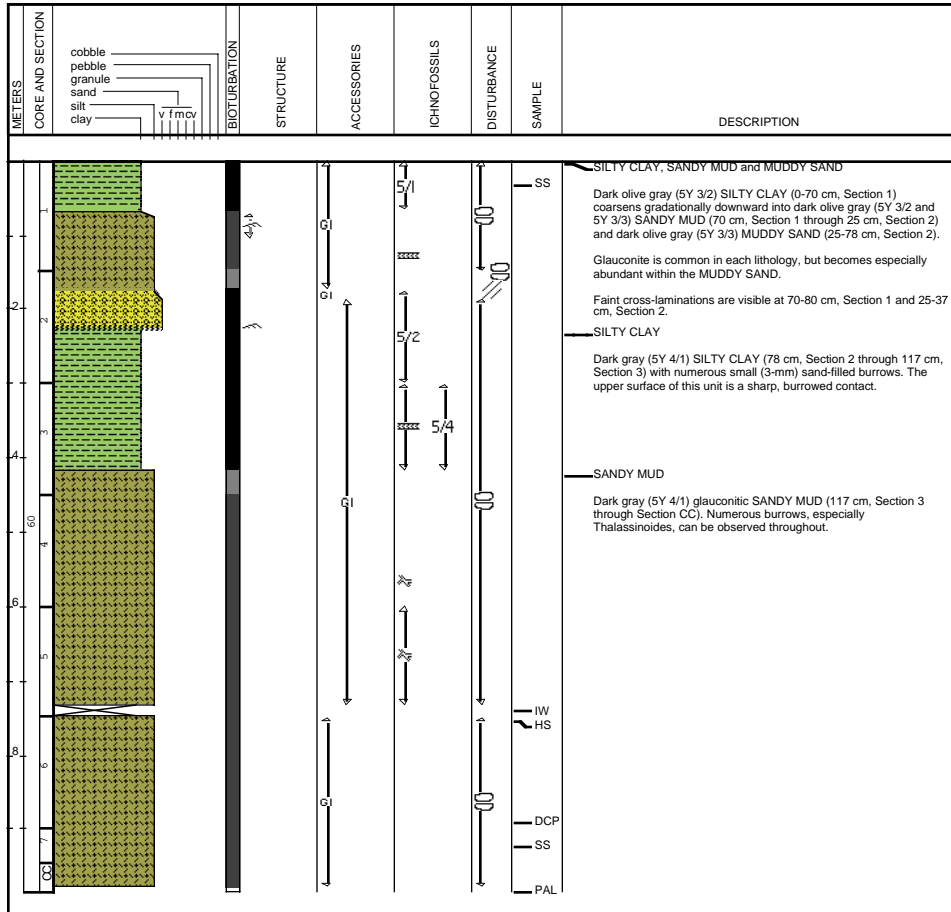
1073A-59X



Site 1073 Hole A Core 60X

Cored 541.8-551.2 mbsf

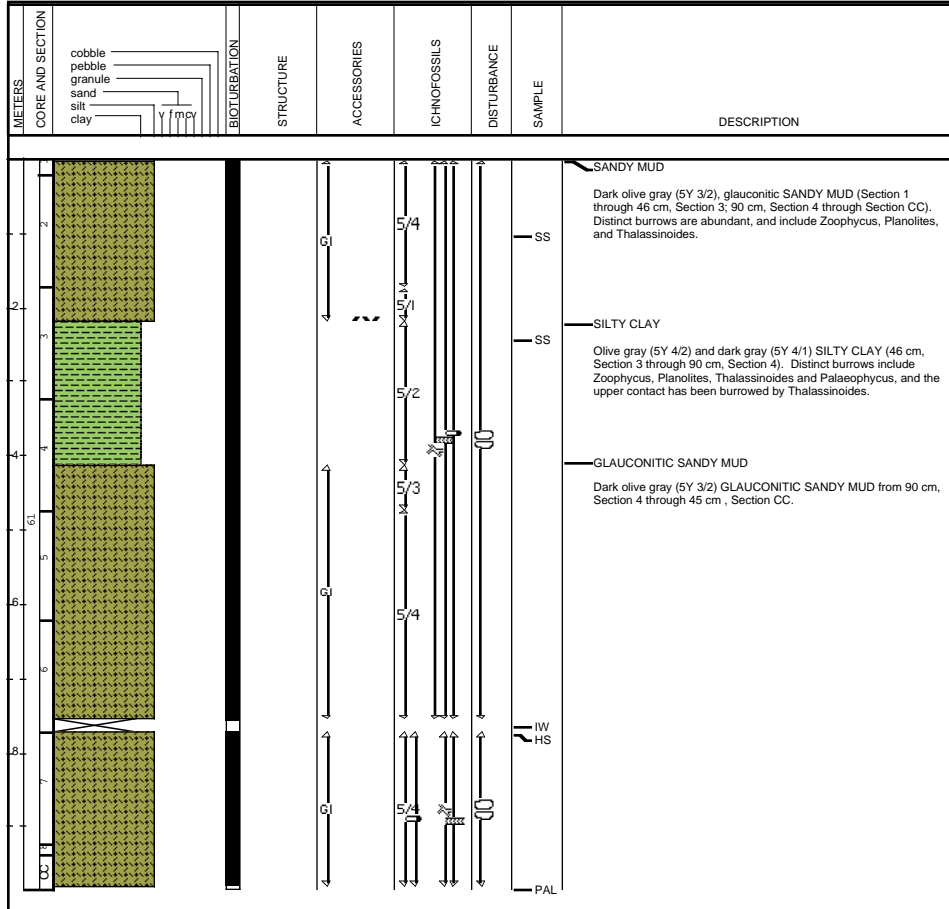
1073A-60X



Site 1073 Hole A Core 61X

Cored 551.2-560.1 mbsf

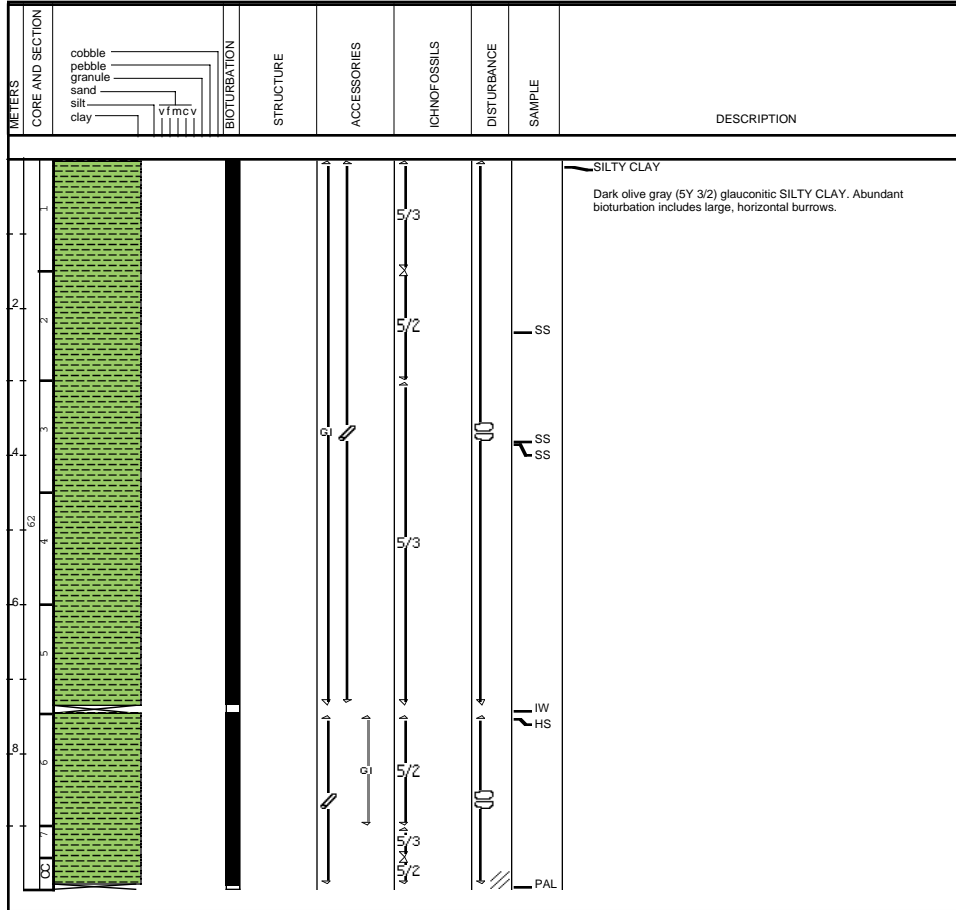
1073A-61X



Site 1073 Hole A Core 62X

Cored 560.1-569.4 mbsf

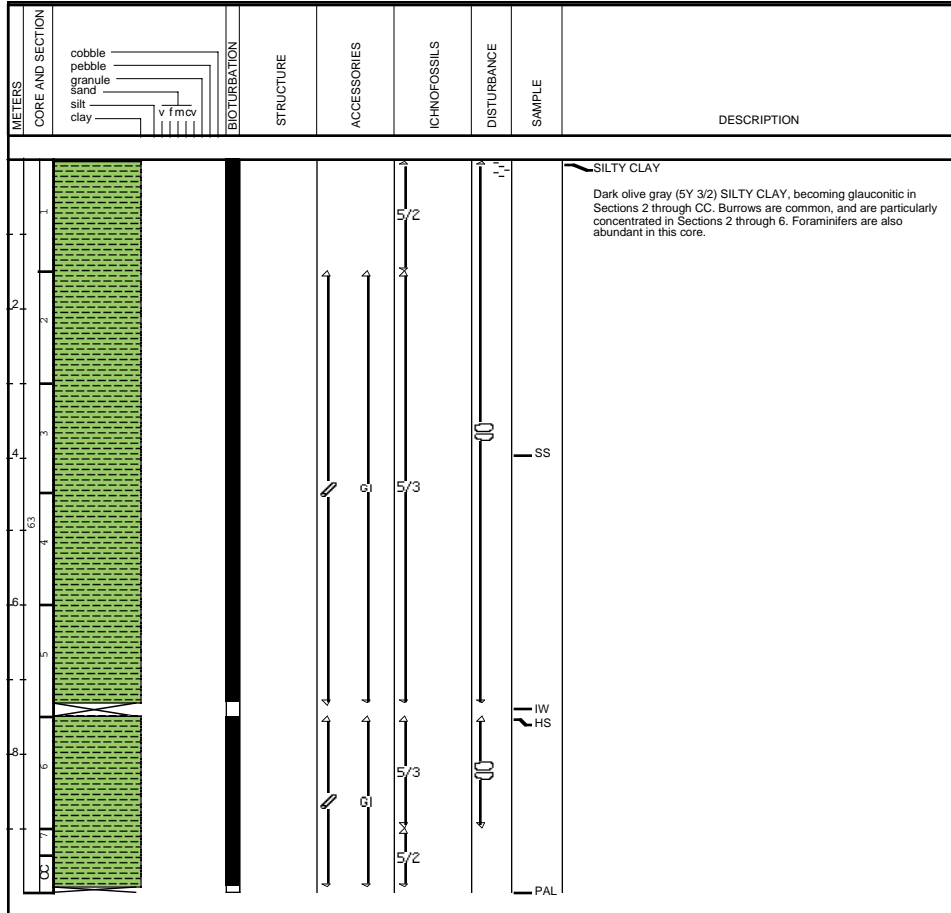
1073A-62X



Site 1073 Hole A Core 63X

Cored 569.4-578.8 mbsf

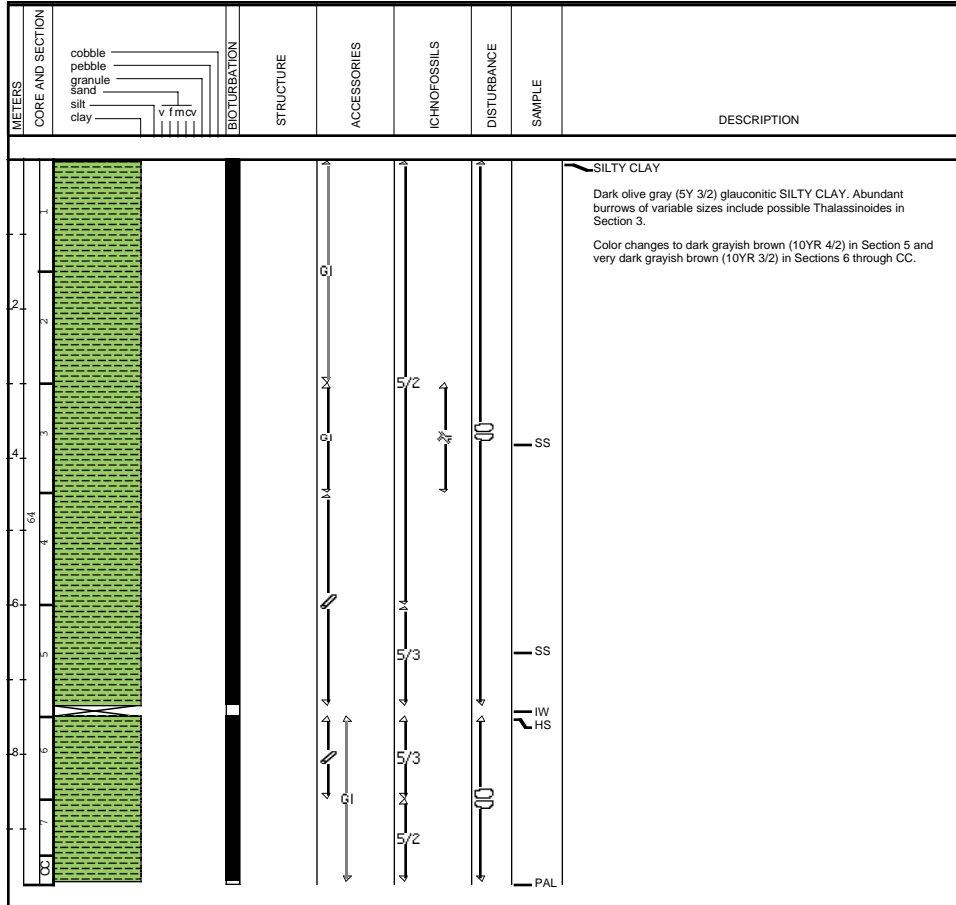
1073A-63X

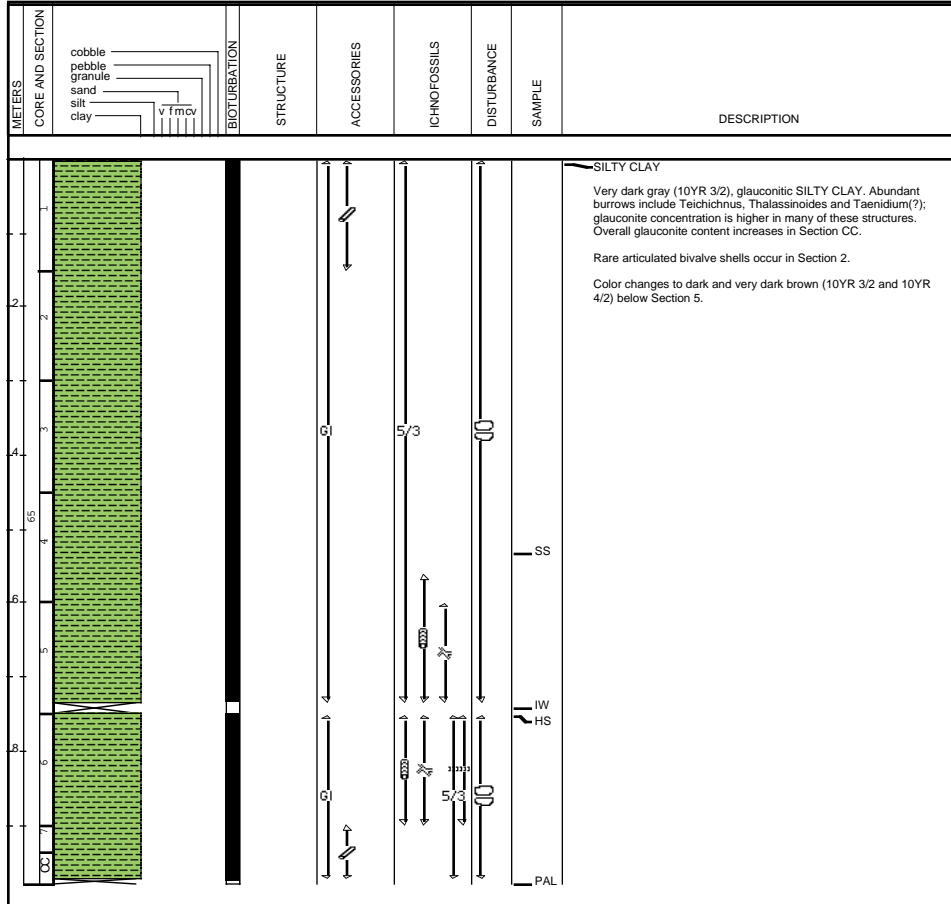


Site 1073 Hole A Core 64X

Cored 578.8-588.2 mbsf

1073A-64X





SILTY CLAY

Very dark gray (10YR 3/2), glauconitic SILTY CLAY. Abundant burrows include Teichichnus, Thalassinoides and Taenidium(?); glauconite concentration is higher in many of these structures. Overall glauconite content increases in Section CC.

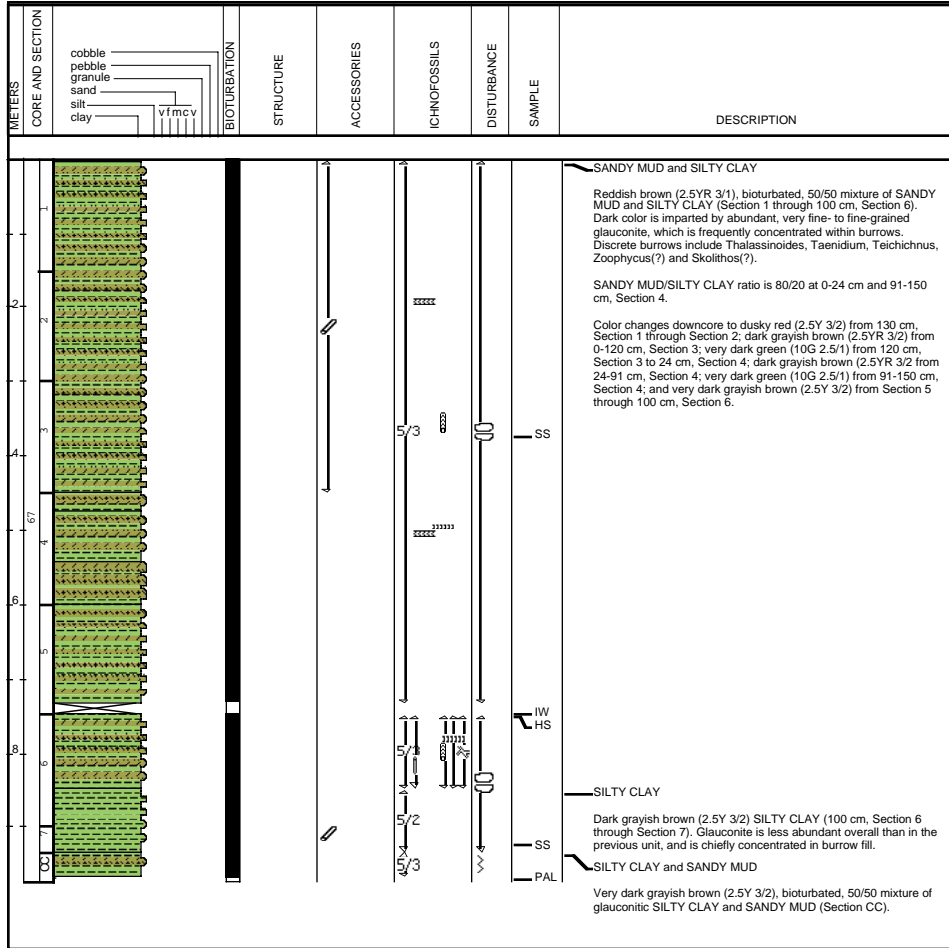
Rare articulated bivalve shells occur in Section 2.

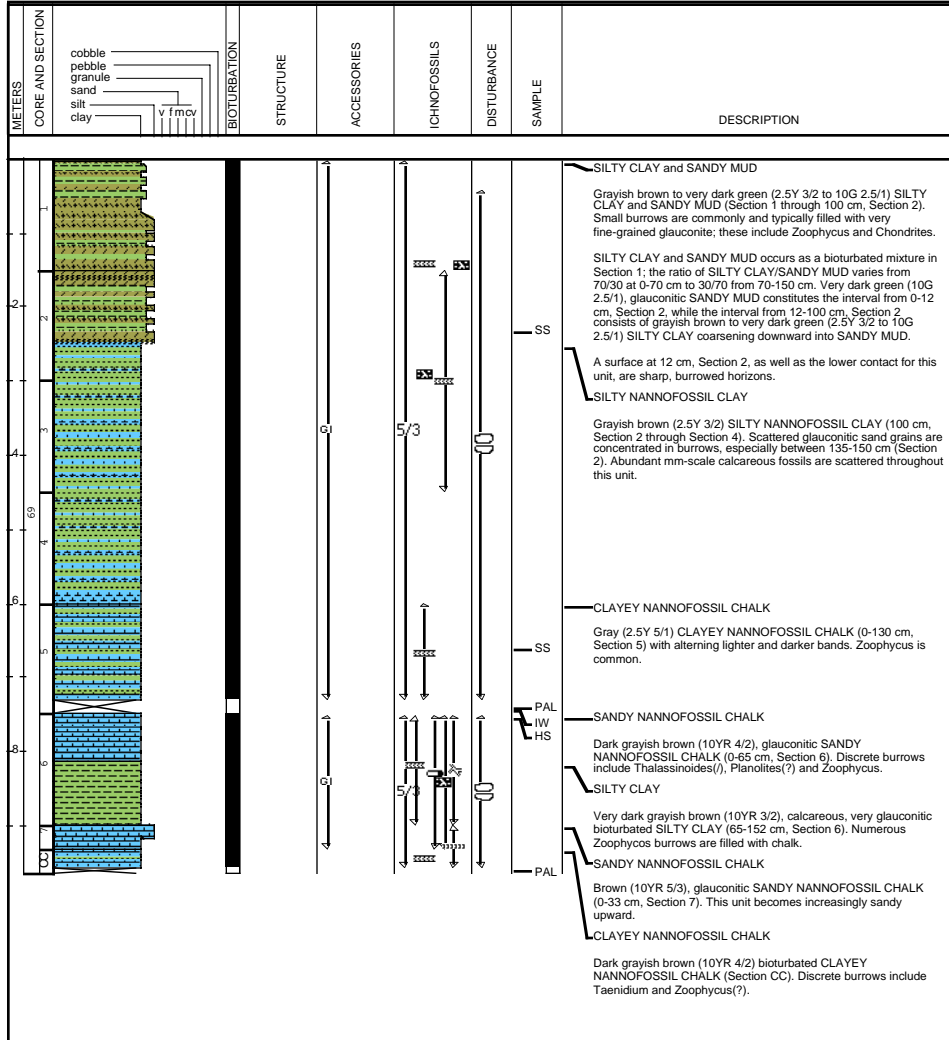
Color changes to dark and very dark brown (10YR 3/2 and 10YR 4/2) below Section 5.

SS

IW
HS

PAL





Site 1073 Hole A Core 70X

Cored 635.8-644.7 mbsf

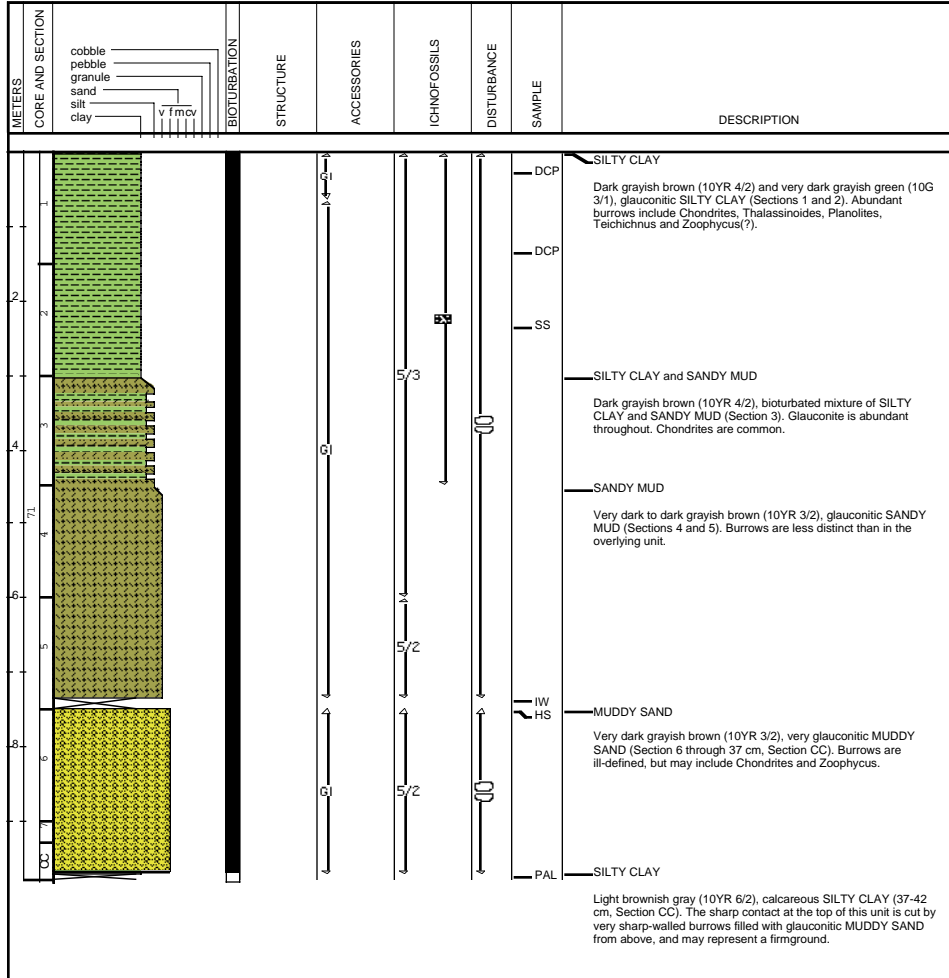
1073A-70X

METERS	CORE AND SECTION	BIOTURBATION	STRUCTURE	ACCESSORIES	ICHI NO FOSSILS	DISTURBANCE	SAMPLE	DESCRIPTION
<p>0 2 4 6 8 10</p>					<p>5/3 5/4 5/3 5/2 5/3 5/3 5/2</p>	<p>IW HS PAL</p>	<p>SILTY CLAY and SANDY MUD Very dark grayish brown (10YR 3/2), bioturbated 70/30 mixture of SILTY CLAY and SANDY MUD (0-35 cm, Section 1). Discrete burrows include Teichichnus.</p> <p>SANDY MUD Dusky green (10G 3/2), very glauconitic, very fine- to fine-grained SANDY MUD (35-80 cm, Section 1).</p> <p>SILTY CLAY Dark grayish brown (2.5Y 4/2) SILTY CLAY (80 cm, Section 1 through Section 4). Very fine- to fine-grained glauconite sand is abundant throughout. Discrete burrows include Chondrites, Thalassinoides, Planolites, Taenidium and Zoophycus(?).</p> <p>SILTY CLAY and SANDY MUD Very dark grayish brown (10YR 3/2), bioturbated 50/50 mixture of SILTY CLAY and SANDY MUD (Sections 5 and 6). Discrete burrows include Planolites, Taenidium, Chondrites and Zoophycus(?). Glauconite is abundant throughout.</p> <p>SANDY MUD Very dark gray (10YR 3/1), very glauconitic SANDY MUD (Sections 7 and CC). Zoophycus burrows are common.</p>	

Site 1073 Hole A Core 71X

Core 644.7-654.1 mbsf

1073A-71X



Site 1073 Hole A Core 72X

Cored 654.1-663.6 mbsf

1073A-72X

