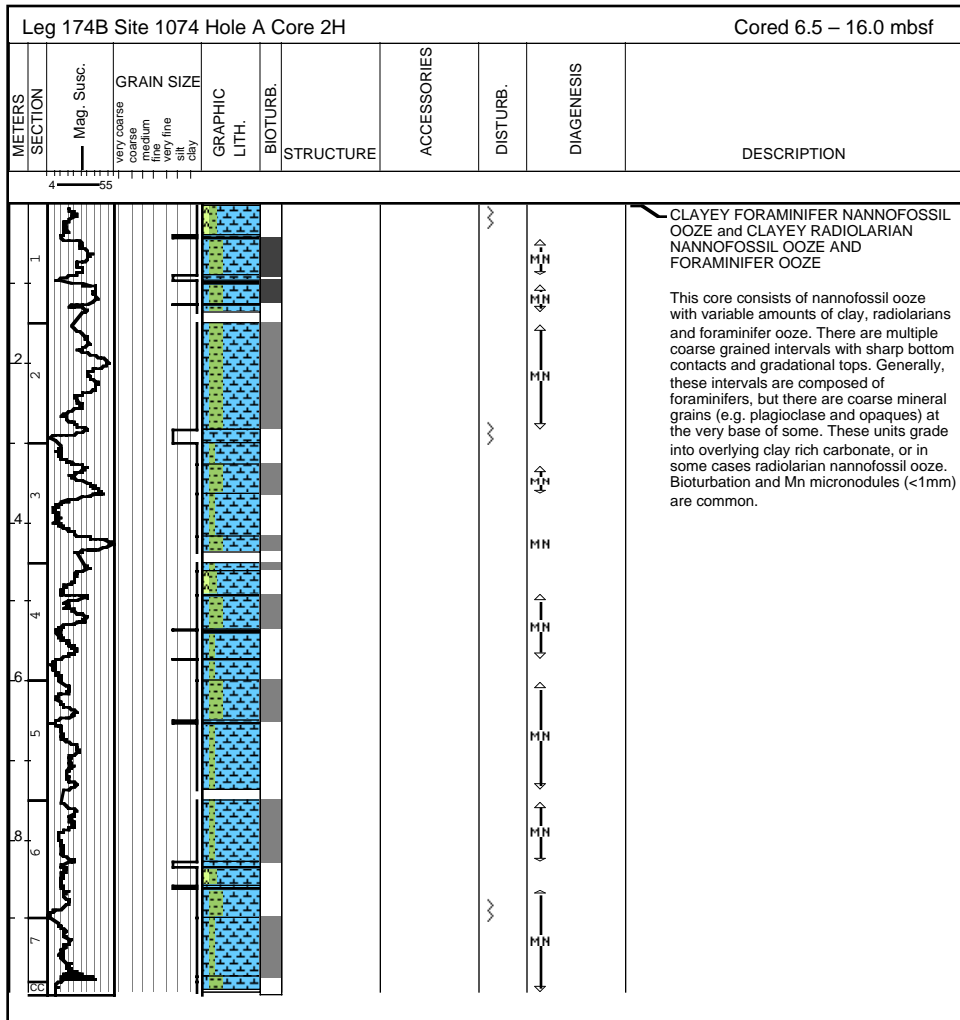
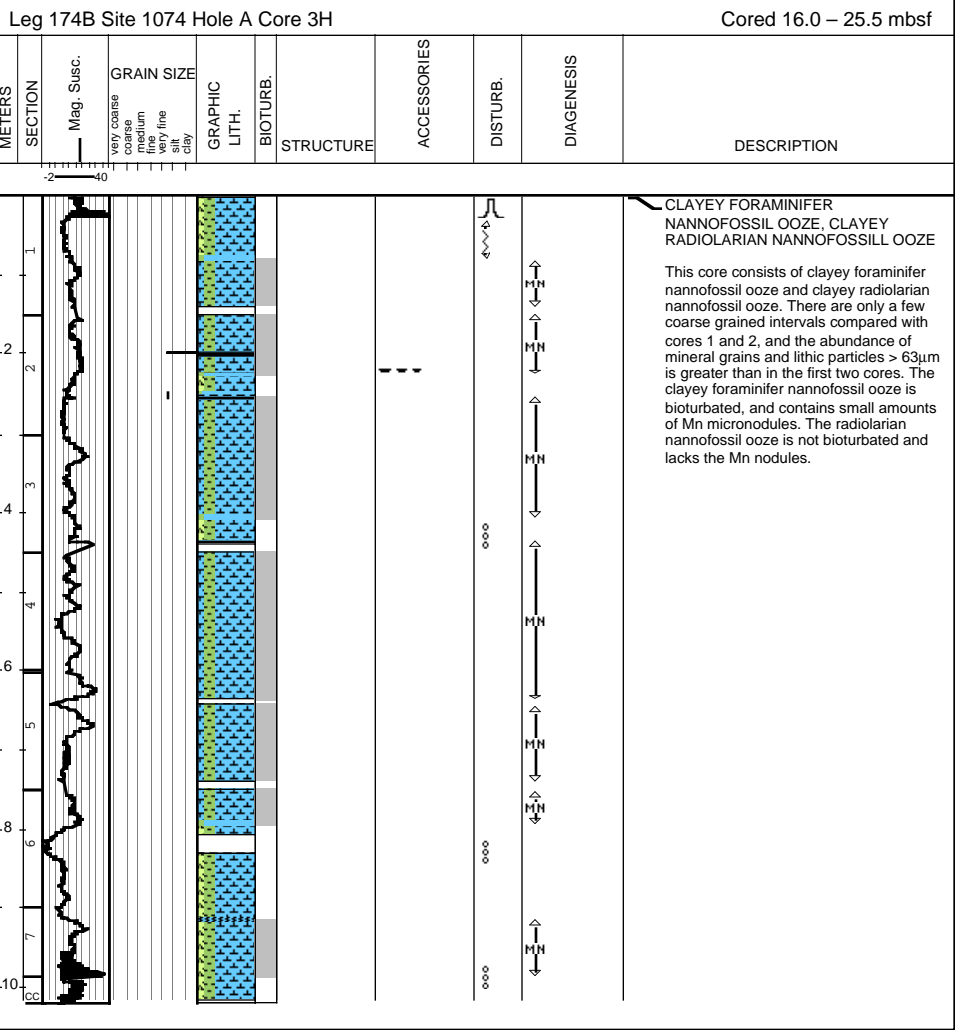


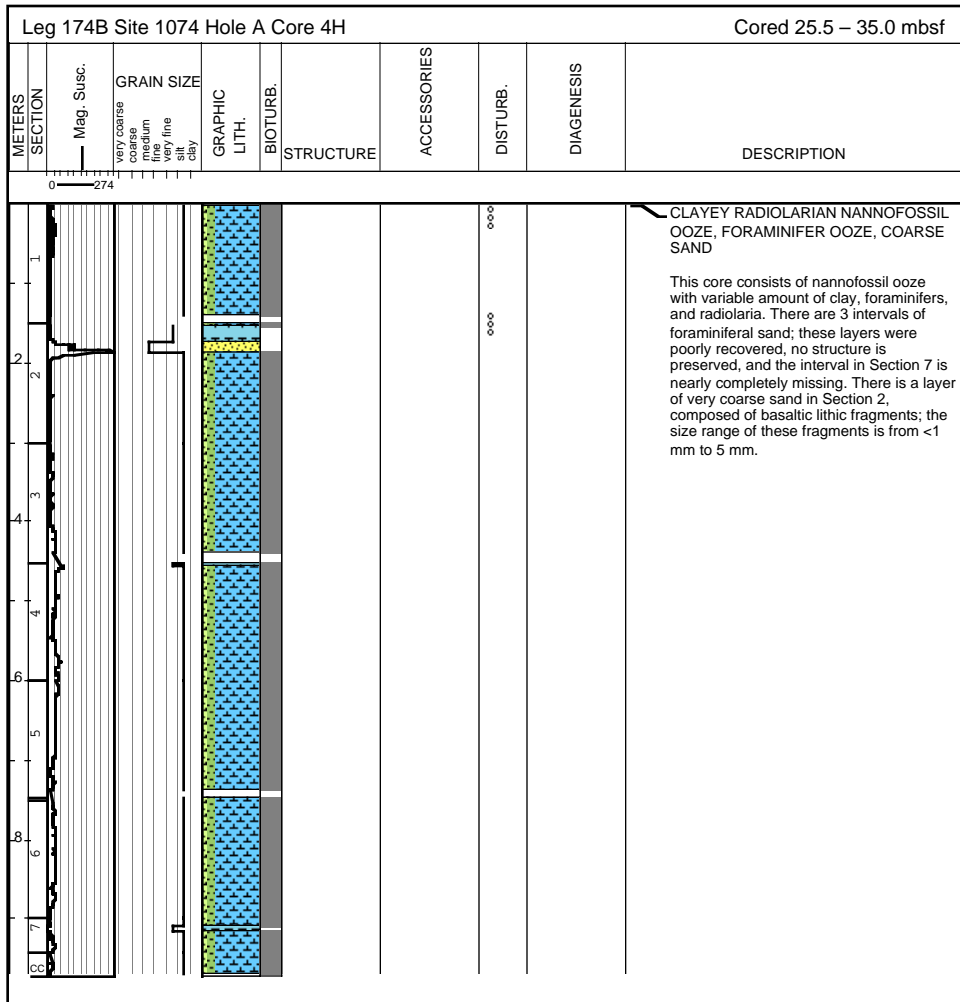
1074A-1H



1074A-2H

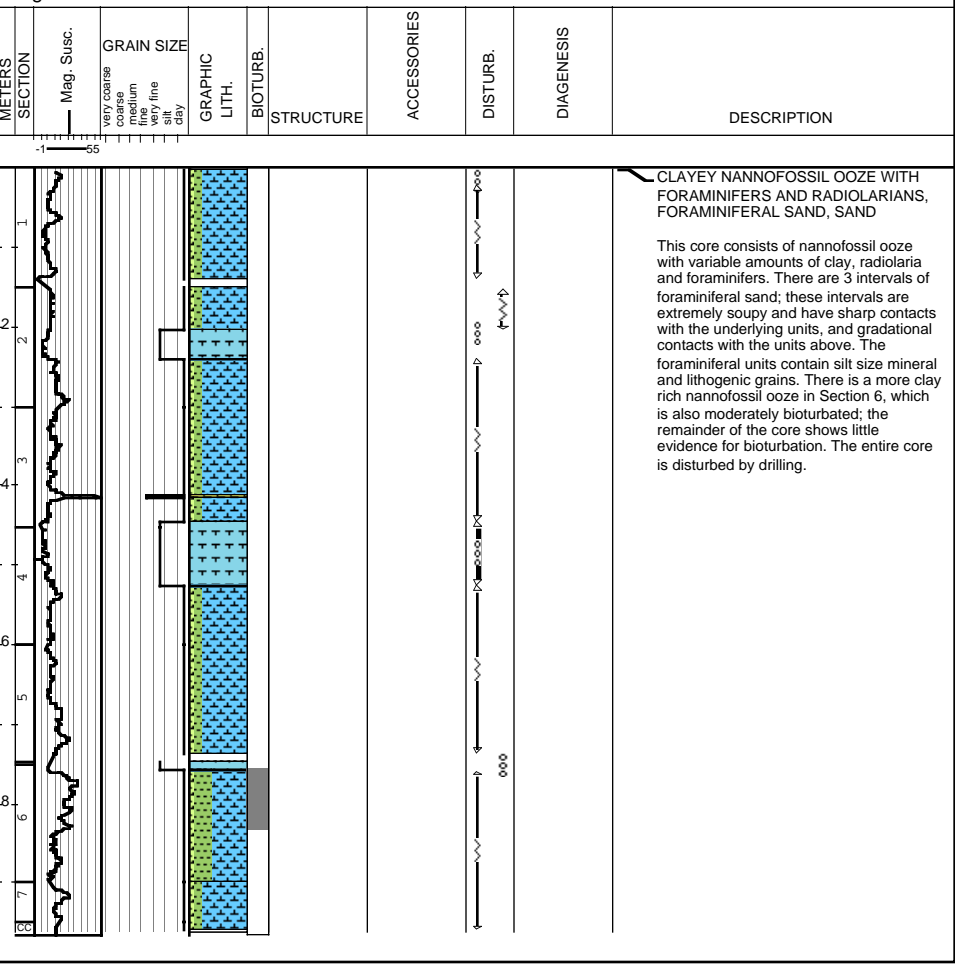


1074A-3H

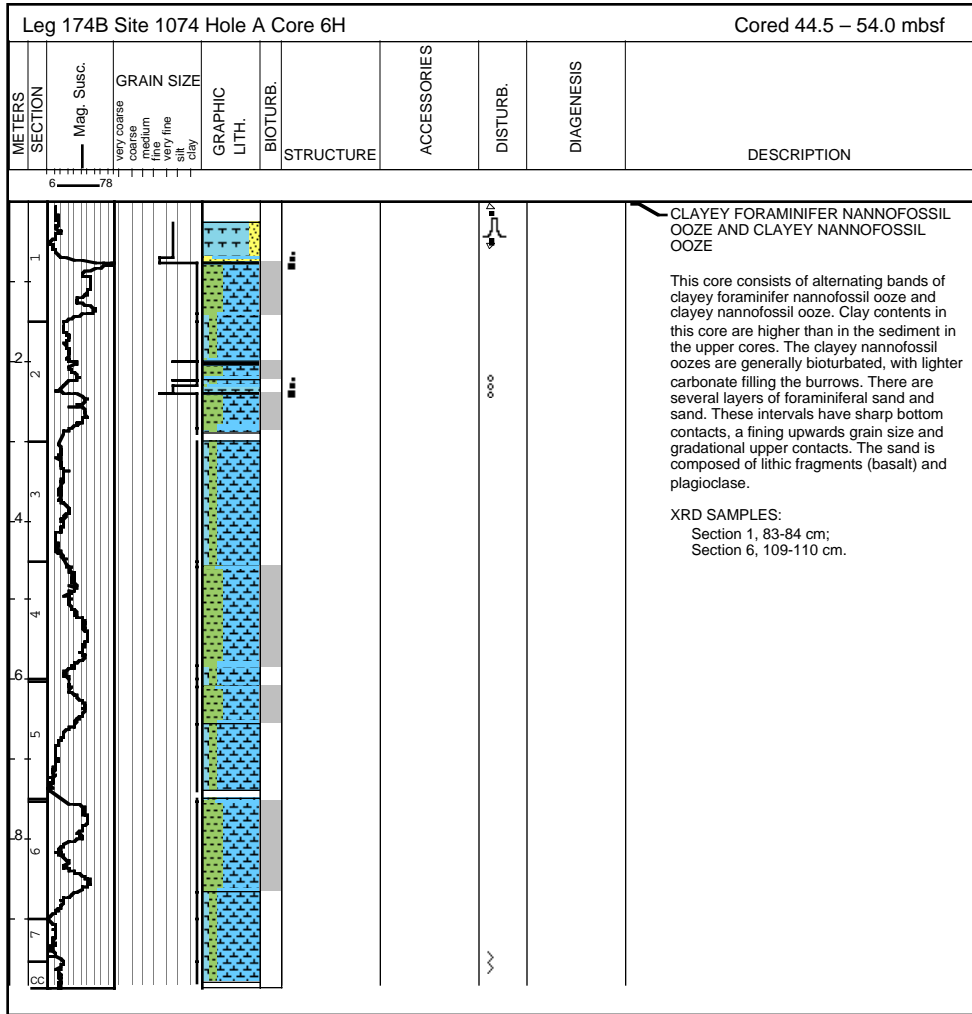


1074A-4H

Leg 174B Site 1074 Hole A Core 5H Cored 35.0 – 44.5 mbsf



1074A-5H

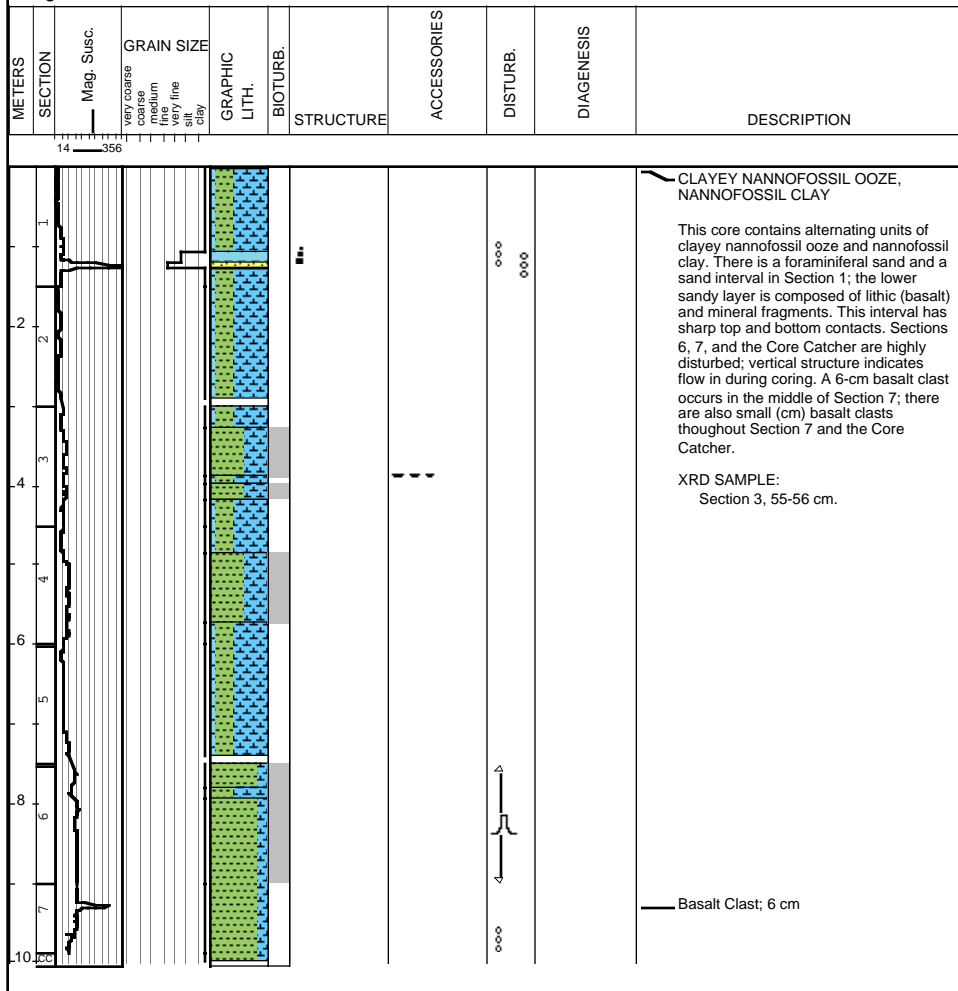





1074A-6H

Leg 174B Site 1074 Hole A Core 7H

Cored 54.0 – 63.5 mbsf

1074A-7H



METERS		Leg 174B Site 1074 Hole A Core 8X		Cored 63.5 – 69.5 mbsf		
SECTION	GRAIN SIZE	GRAPHIC LITH.	STRUCTURE	DISTURB.	FRACTURES	DESCRIPTION
	very coarse coarse medium fine very fine silt clay					
1						<p>APHYRIC BASALT</p> <p>This section generally consists of grey pebbles of aphyric basalt with brown weathering rinds up to 1 cm thick. The groundmass in most pieces consists of interlocking laths of plagioclase with about 15% anhedral amphibole. Very small (<0.5mm) amygdules and thin fractures in several of the pieces are coated with zeolites. The bottom half cm of Piece 2 and all of Piece 3, a 2-cm pebble, is a fine grained gabbro with crystals of amphibole and plagioclase up to 2 mm, with a well developed 0.8 cm weathered zone. Piece 2 is 8 cm long and the only piece with certain up orientation. No observed structures except a thin vein in Piece 2 and several thin fractures in Piece 5.</p>

1074A-8X