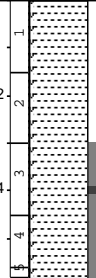
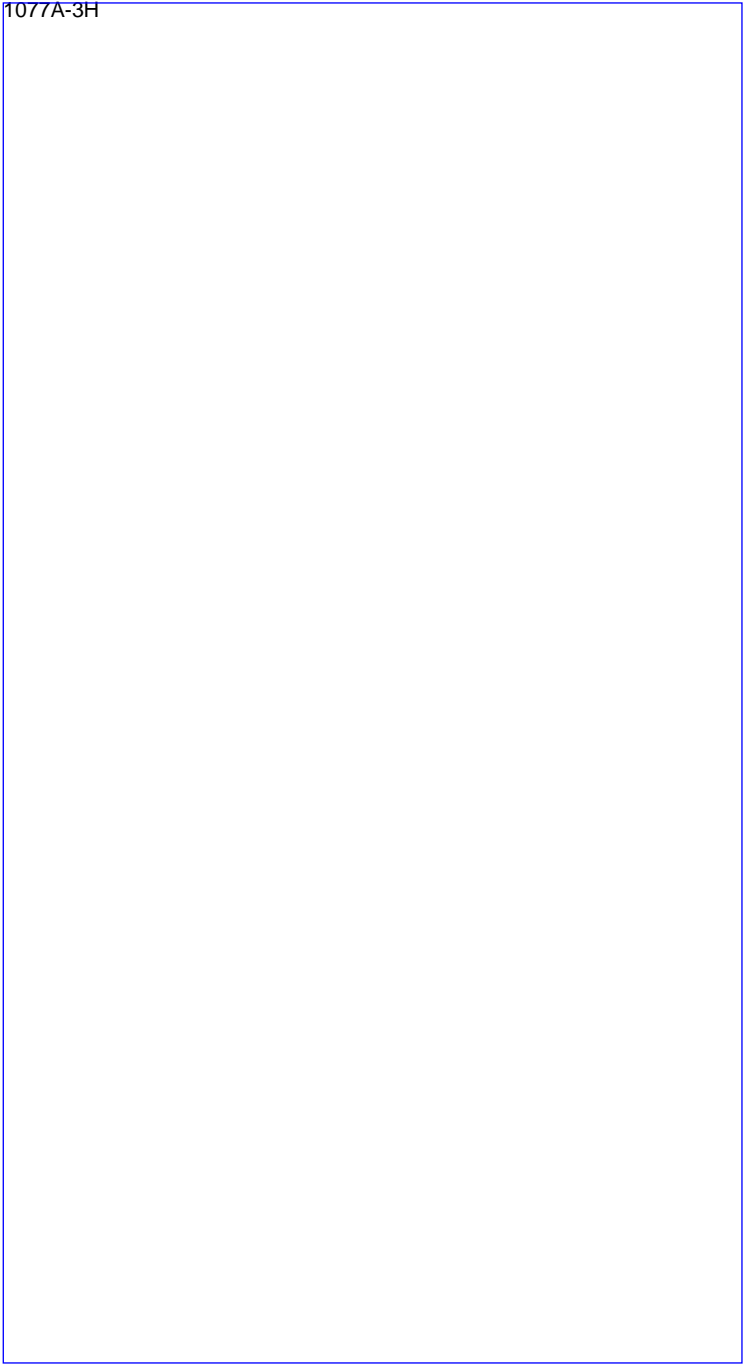
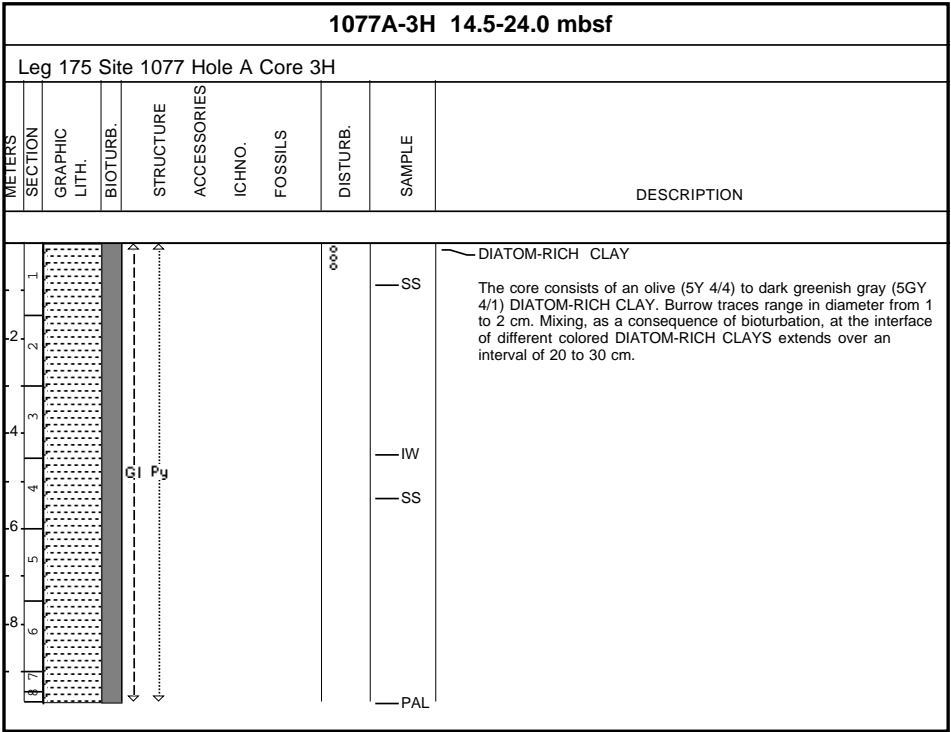


1077A-2H 5.0-14.5 mbsf										
Leg 175 Site 1077 Hole A Core 2H										
METERS	SECTION	GRAPHIC LITH.	BIOTURB.	STRUCTURE	ACCESSORIES	ICHNO.	FOSSILS	DISTURB.	SAMPLE	DESCRIPTION
1										<p>DIATOM-RICH CLAY</p> <p>The core consists of dark gray (5Y 4/1) and olive gray (5Y 4/2) DIATOM-RICH CLAY. Moderate bioturbation occurs throughout the core. Pteropods and shell fragments are common. Framboidal pyrite appears in this core.</p>
2									SS	
3									SS	
4									IW	
5									SS	
6									PAL	

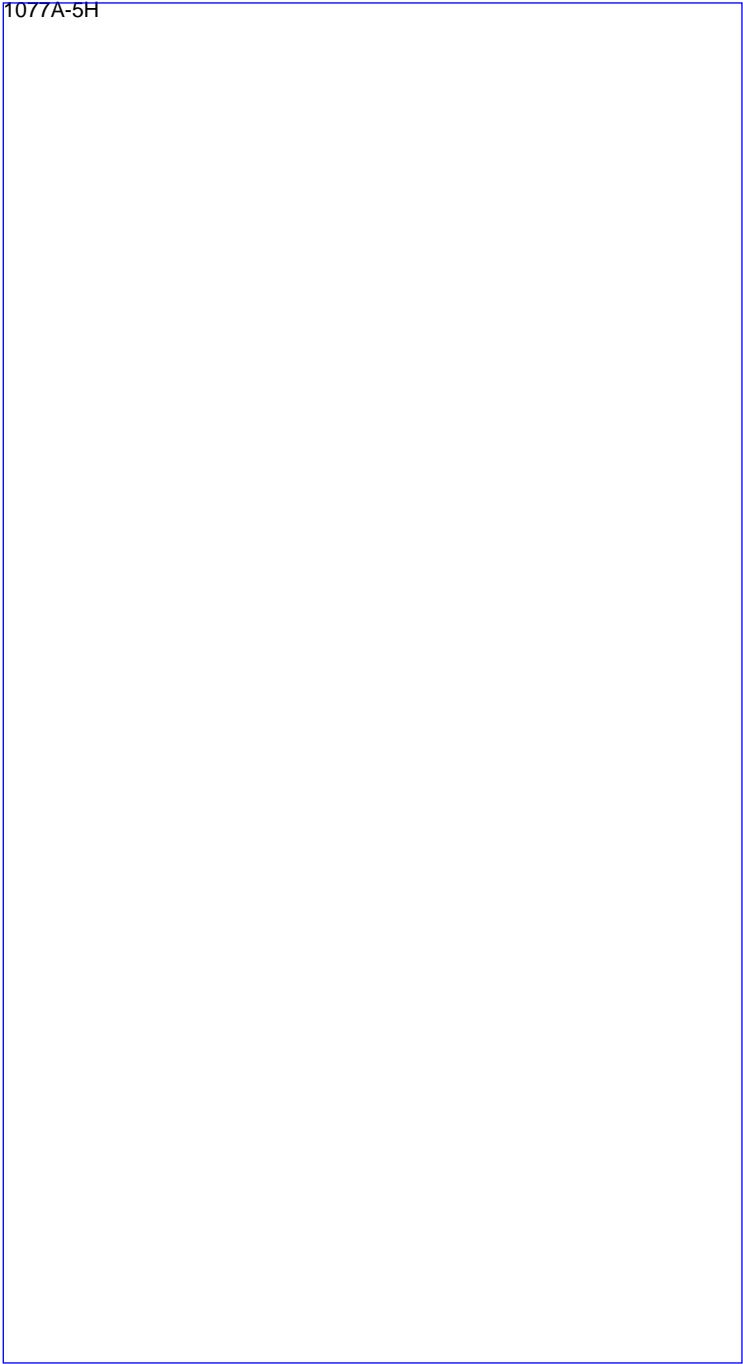
1077A-2H

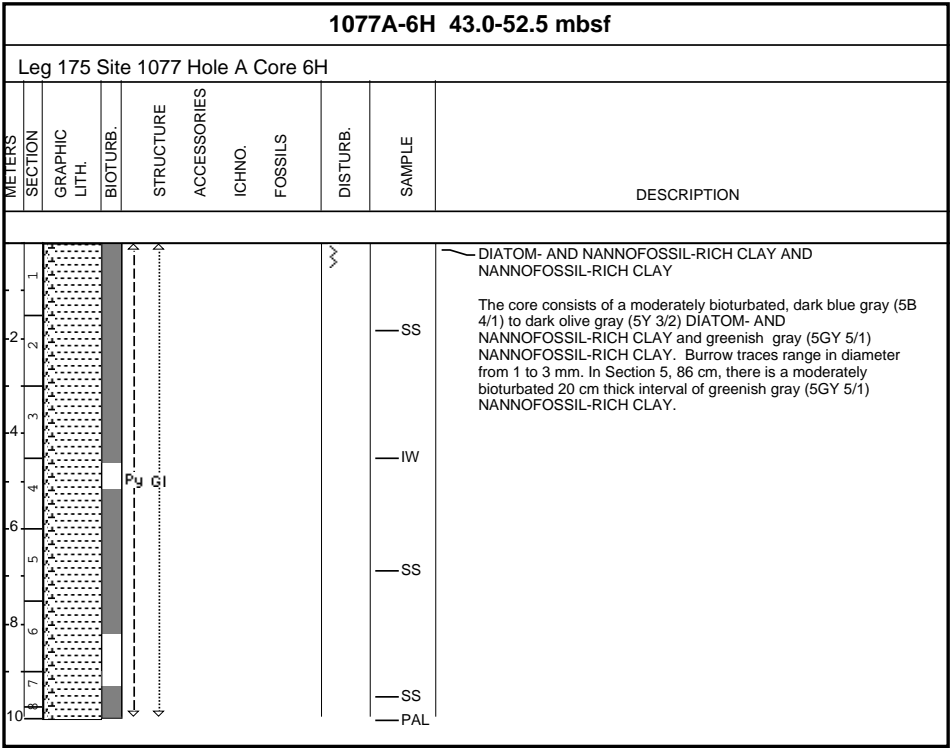


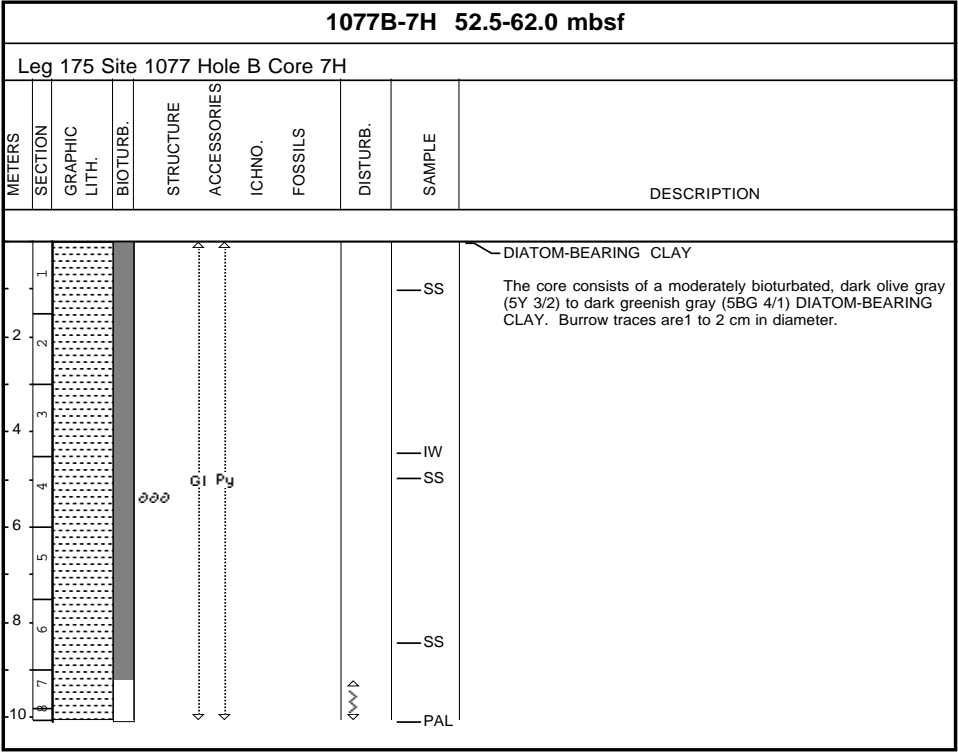
1077A-4H 24.0-33.5 mbsf										
Leg 175 Site 1077 Hole A Core 4H										
METERS	SECTION	GRAPHIC LITH.	BIOTURB.	STRUCTURE	ACCESSORIES	ICHNO.	FOSSILS	DISTURB.	SAMPLE	DESCRIPTION
1										<p>DIATOM-BEARING CLAY and DIATOM-BEARING, NANNOFOSSIL-RICH CLAY</p> <p>The core consists of a moderately bioturbated, olive (5Y 4/4) and dark greenish gray (5GY 4/1) DIATOM-BEARING CLAY and DIATOM-BEARING, NANNOFOSSIL-RICH CLAY. There is a gradual transition from the DIATOM-RICH CLAY of Core 3H to DIATOM-BEARING NANNOFOSSIL-RICH CLAY of this core, and a gradual transition from DIATOM-BEARING CLAY (Section 6, 7) to NANNOFOSSIL-RICH, DIATOM-BEARING NANNOFOSSIL-RICH CLAY.</p> <p>IW</p> <p>SS</p> <p>SS</p> <p>PAL</p>
2										
3										
4										
5										
6										
7										
8										

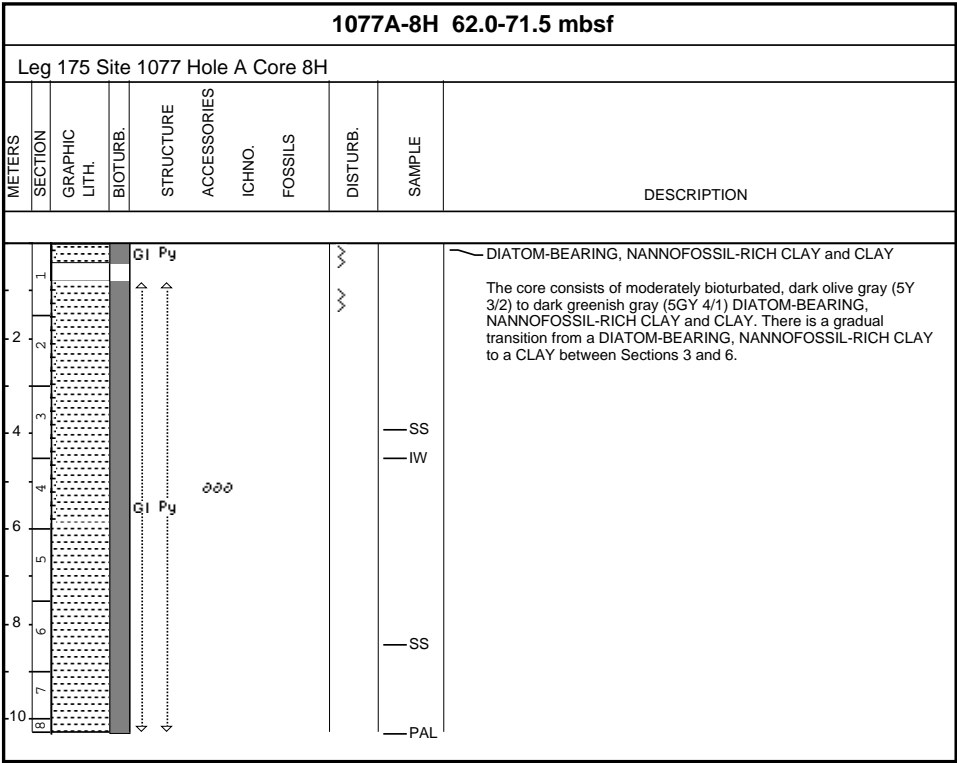


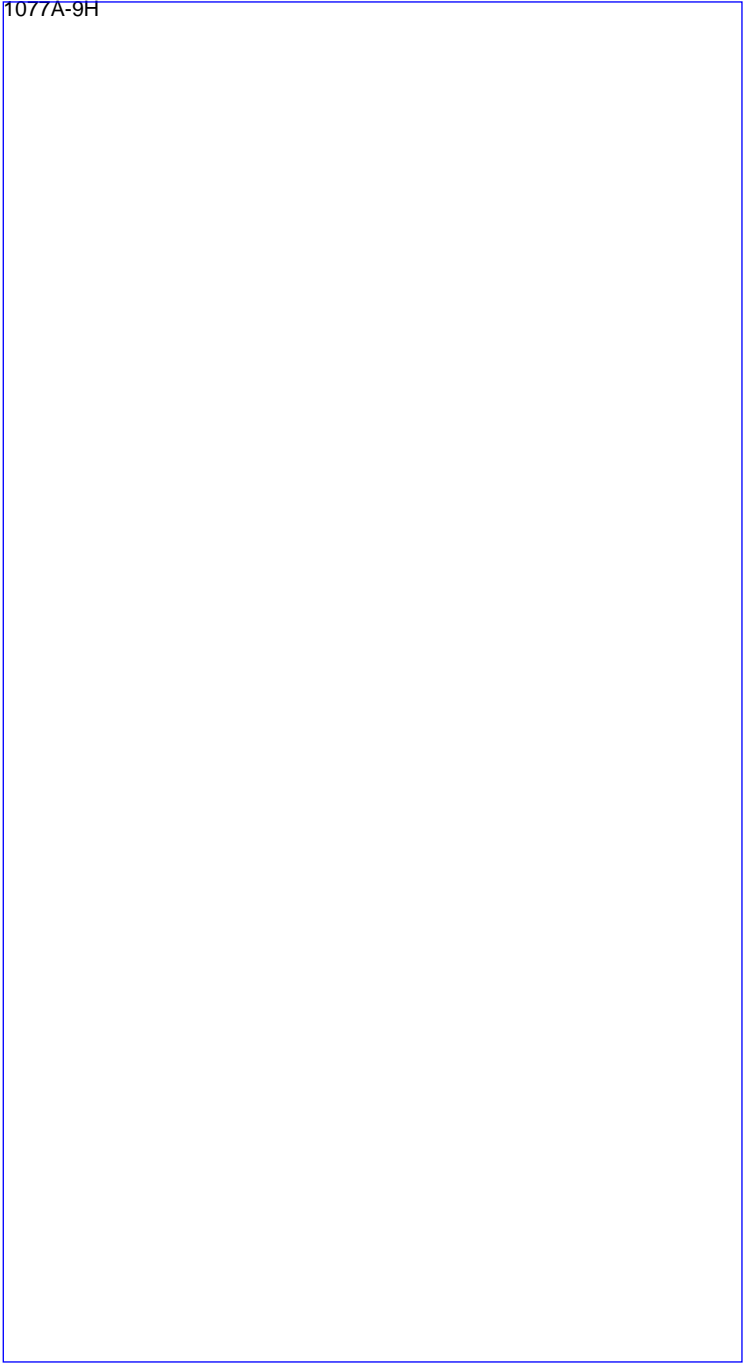
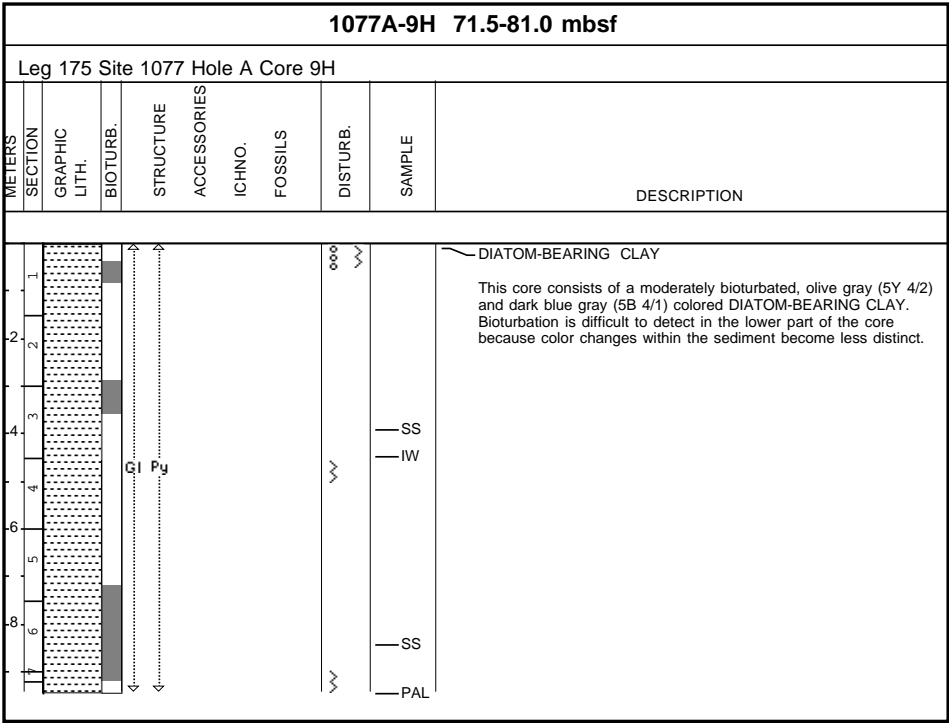
1077A-5H 33.5-43.0 mbsf										
Leg 175 Site 1077 Hole A Core 5H										
METERS	SECTION	GRAPHIC LITH.	BIOTURB.	STRUCTURE	ACCESSORIES	ICHNO.	FOSSILS	DISTURB.	SAMPLE	DESCRIPTION
1										<p>DIATOM-BEARING CLAY and DIATOM- AND NANNOFOSSIL-RICH CLAY</p> <p>The core consists of a moderately bioturbated, olive (5Y 4/4) and dark greenish gray (5GY 4/1), DIATOM-BEARING CLAY and DIATOM- AND NANNOFOSSIL-RICH CLAY. There is a gradual transition from DIATOM-BEARING, NANNOFOSSIL-RICH CLAY at the base of Core 4H to the DIATOM-BEARING CLAY of this core, and a gradual transition (Sections 5) from the DIATOM-BEARING CLAY to DIATOM- AND NANNOFOSSIL-RICH CLAY. Burrow traces are 1 to 2 cm in diameter. Rare, whitish-gray nodules, 0.2 mm in diameter, are disseminated throughout Section 5.</p>
2									SS	
3									SS	
4									IW	
5									SS	
6										
7										
8									PAL	

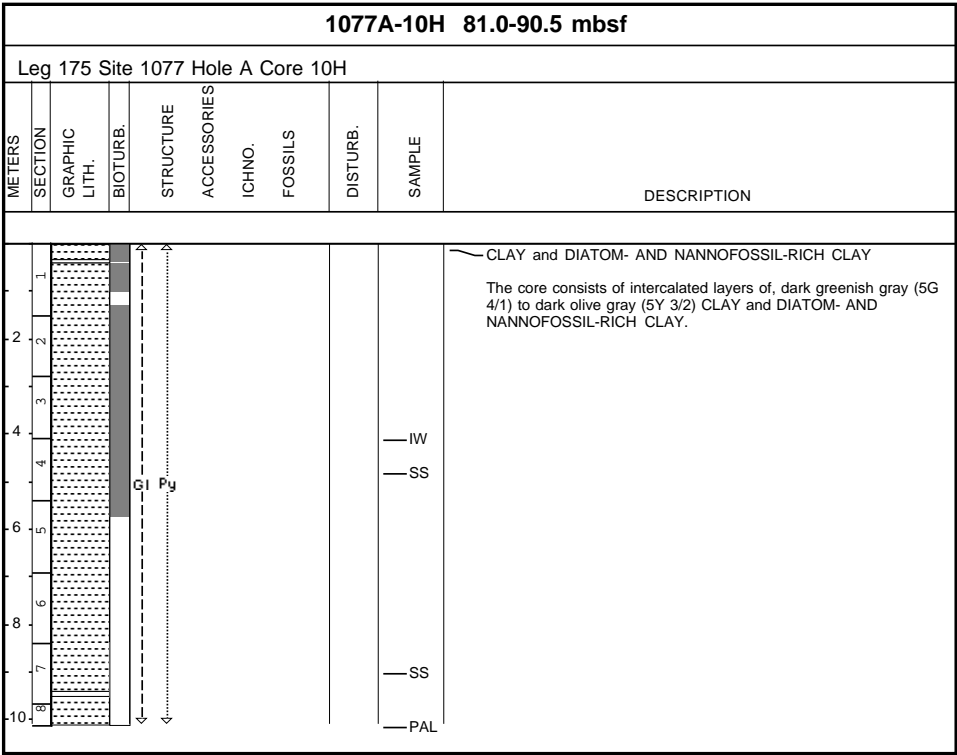


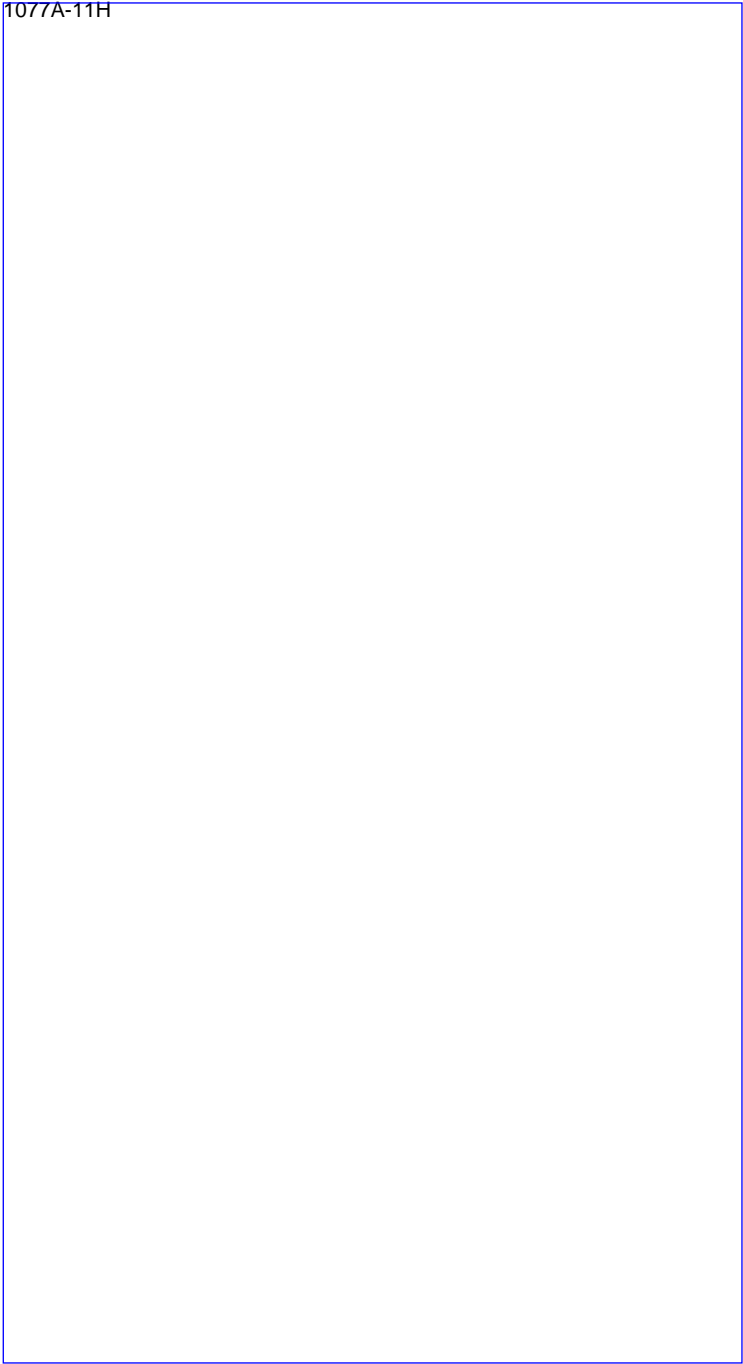
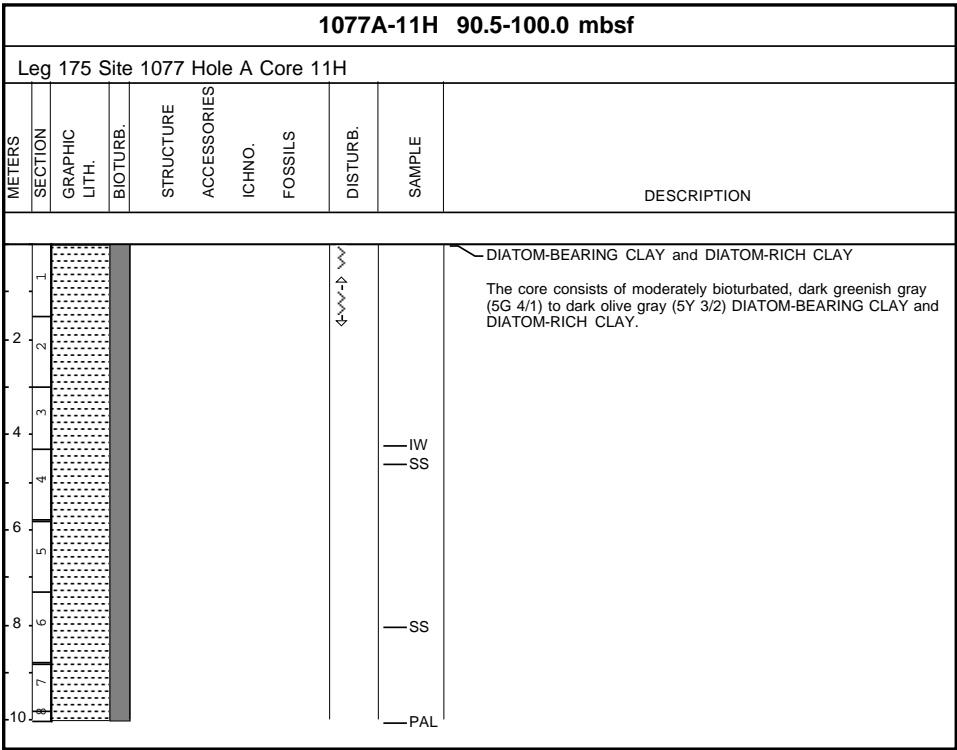


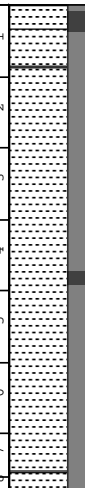





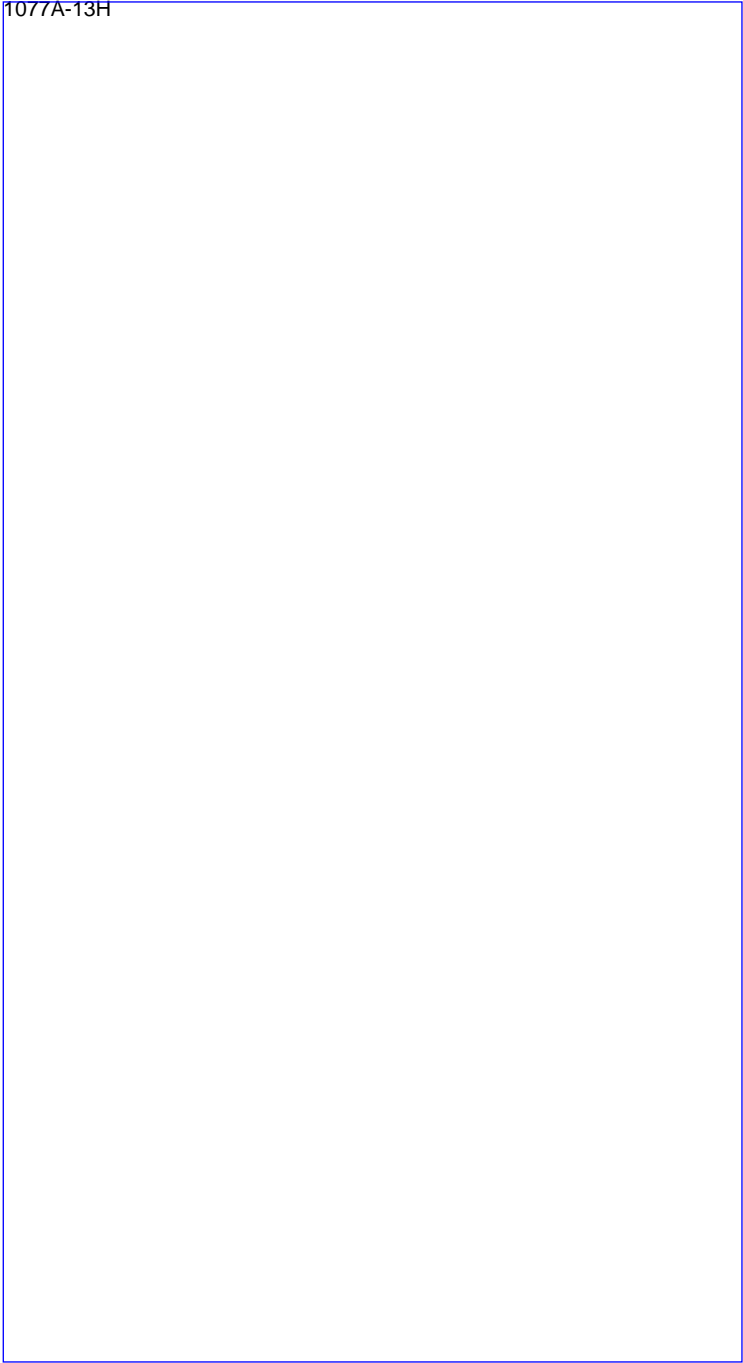
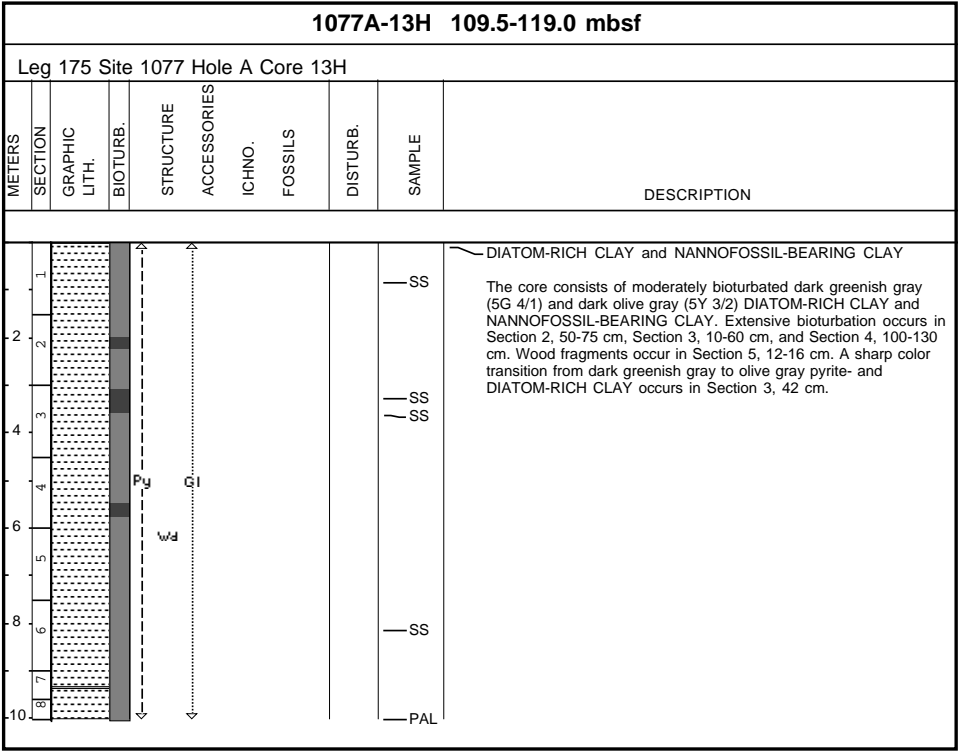


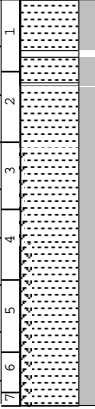
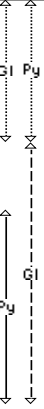
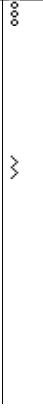
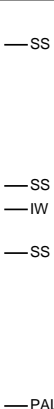




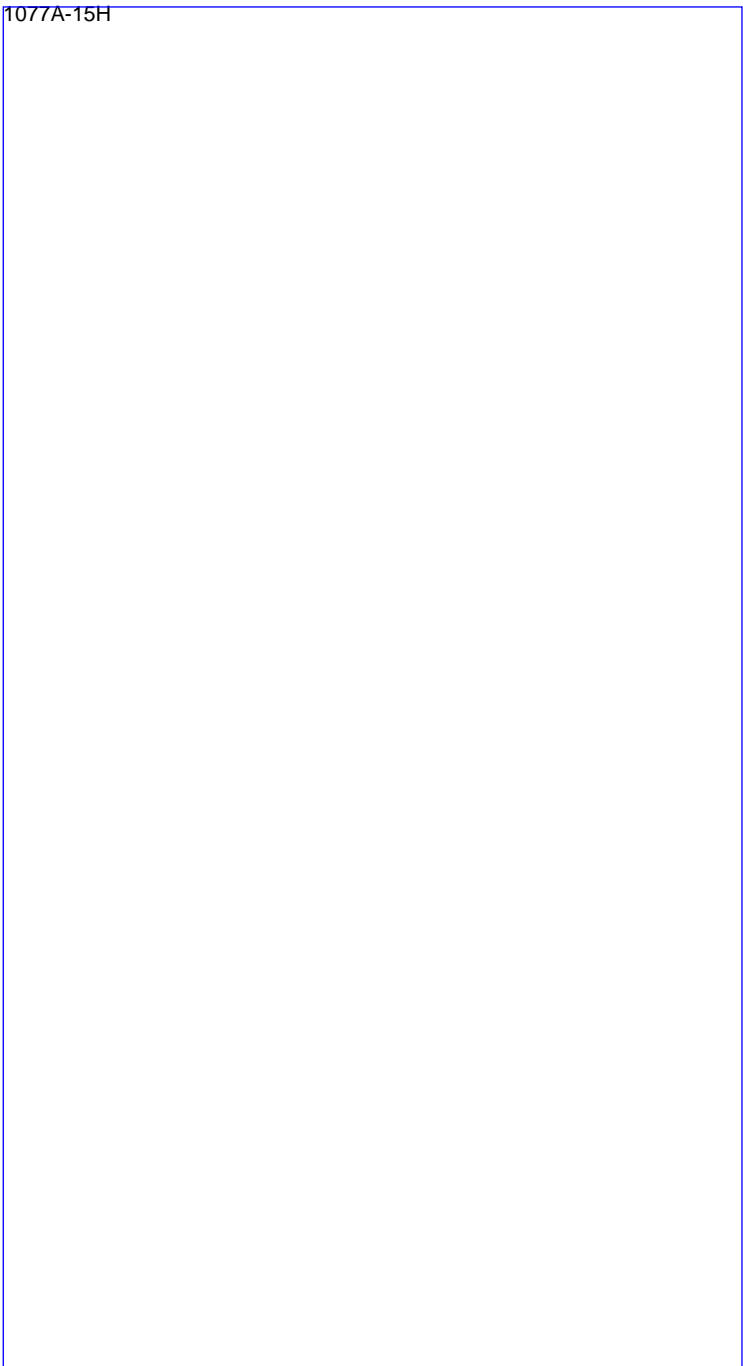
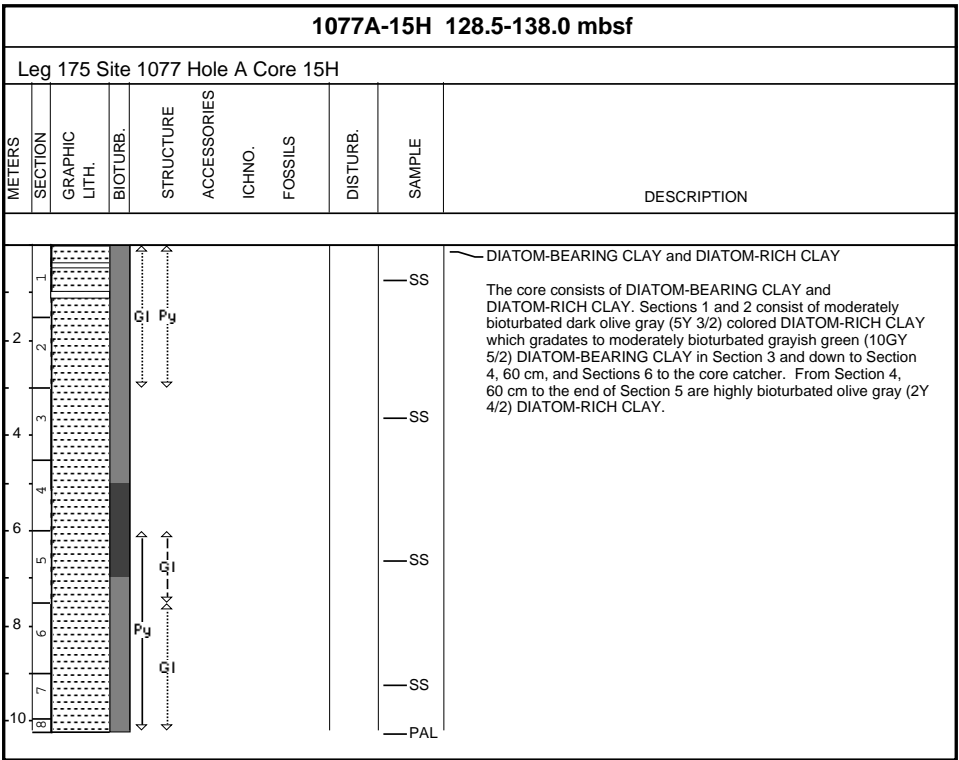
1077A-12H 100.0-109.5 mbsf							
Leg 175 Site 1077 Hole A Core 12H							
METERS	SECTION	GRAPHIC LITH.	BIOTURB.	STRUCTURE	ACCESSORIES	ICHNO.	FOSSILS
						DISTURB.	SAMPLE
DESCRIPTION							
1 2 3 4 5 6 7 8 9 10							
DIATOM-BEARING CLAY and DIATOM-RICH CLAY							
The core consists of moderately bioturbated, dark greenish gray (5G 4/1) to dark olive gray (5Y 3/2) DIATOM-BEARING CLAY and DIATOM-RICH CLAY.							
							

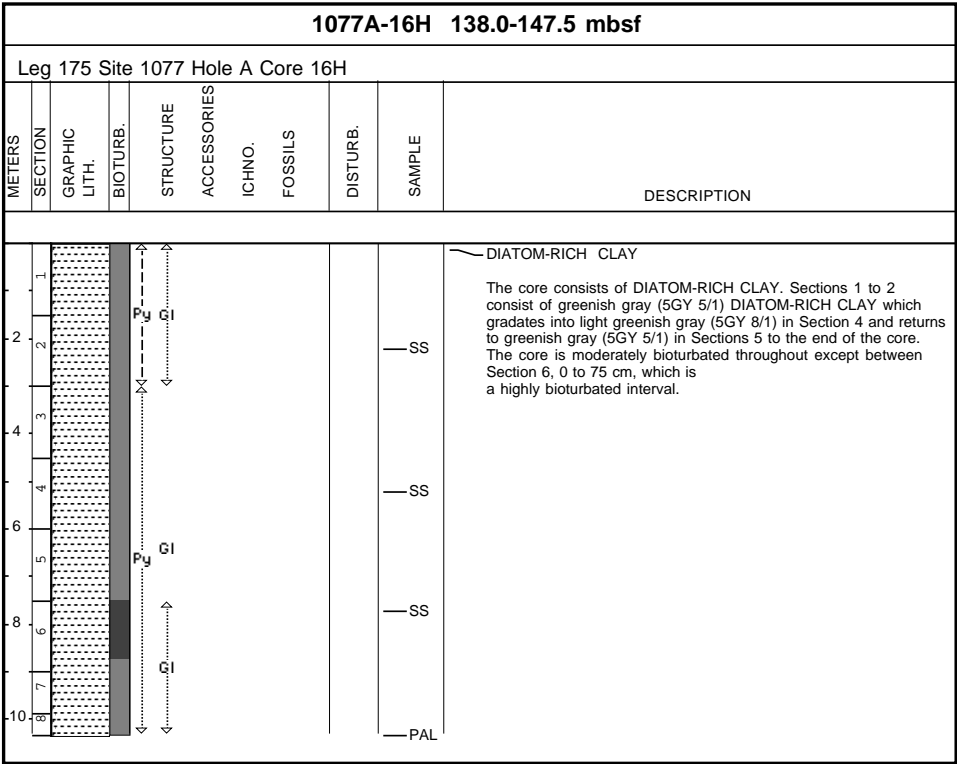
1077A-12H

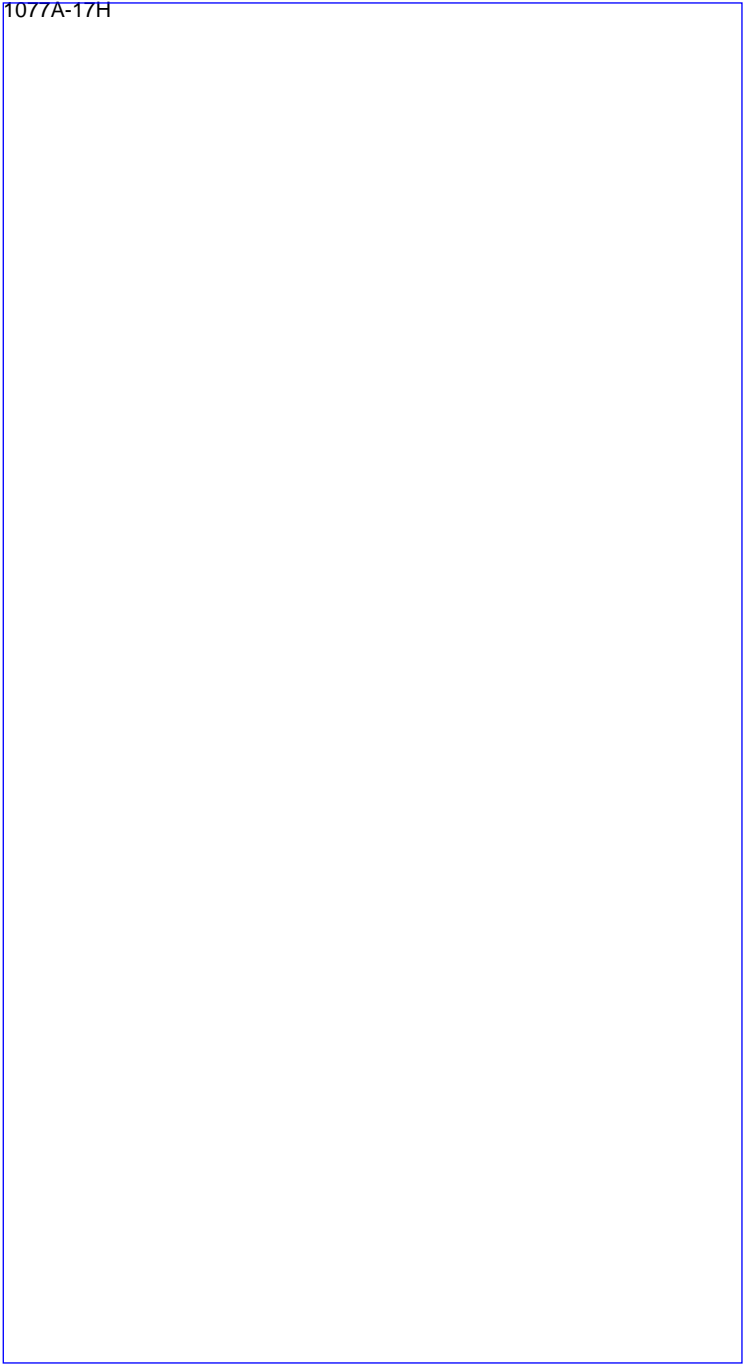
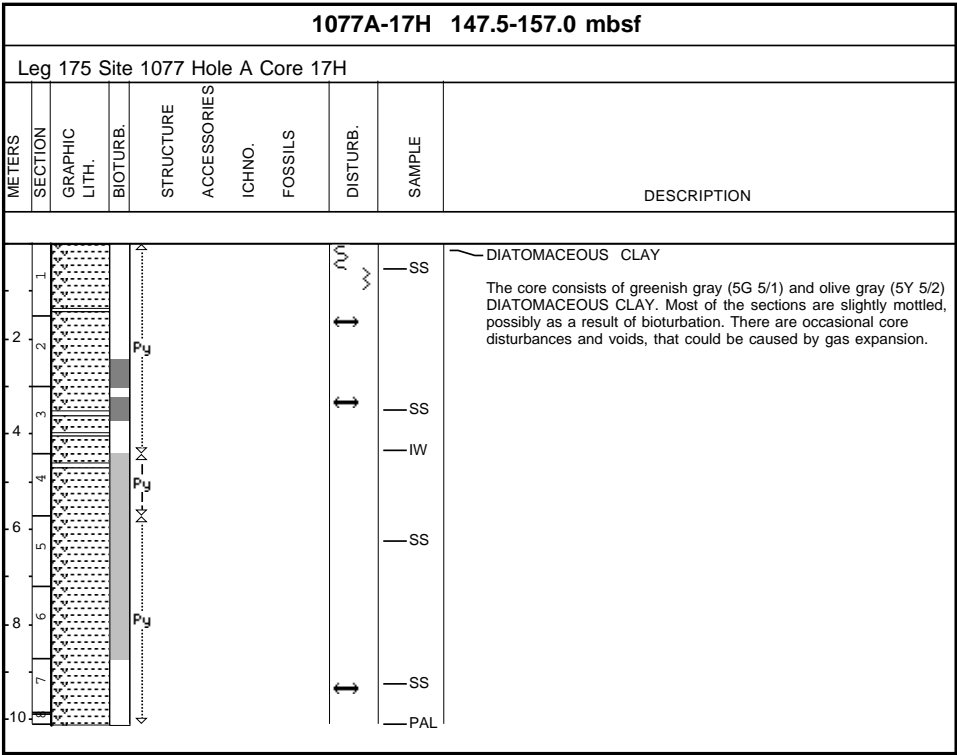


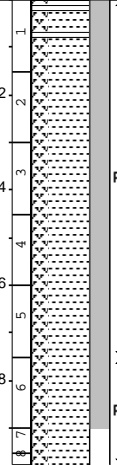
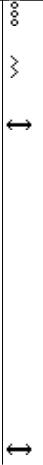
1077A-14H 119.0-128.5 mbsf										
Leg 175 Site 1077 Hole A Core 14H										
METERS	SECTION	GRAPHIC LITH.	BIOTURB.	STRUCTURE	ACCESSORIES	ICHO.	FOSSILS	DISTURB.	SAMPLE	DESCRIPTION
1 2 3 4 5 6 7 8	1 2 3 4 5 6 7									<p>DIATOM-BEARING CLAY, DIATOM-RICH CLAY and DIATOMACEOUS CLAY</p> <p>The core consists of a DIATOM-BEARING CLAY, DIATOM-RICH CLAY and DIATOMACEOUS CLAY. Sections 1 and 2 consist of moderately bioturbated dark olive gray (5Y 3/2) DIATOM-BEARING CLAY which grades into moderately bioturbated gray green (10G 4/2) DIATOM-RICH CLAY in Section 3 and highly bioturbated olive gray (5Y 4/2) DIATOMACEOUS CLAY in Sections 4 to 6.</p>

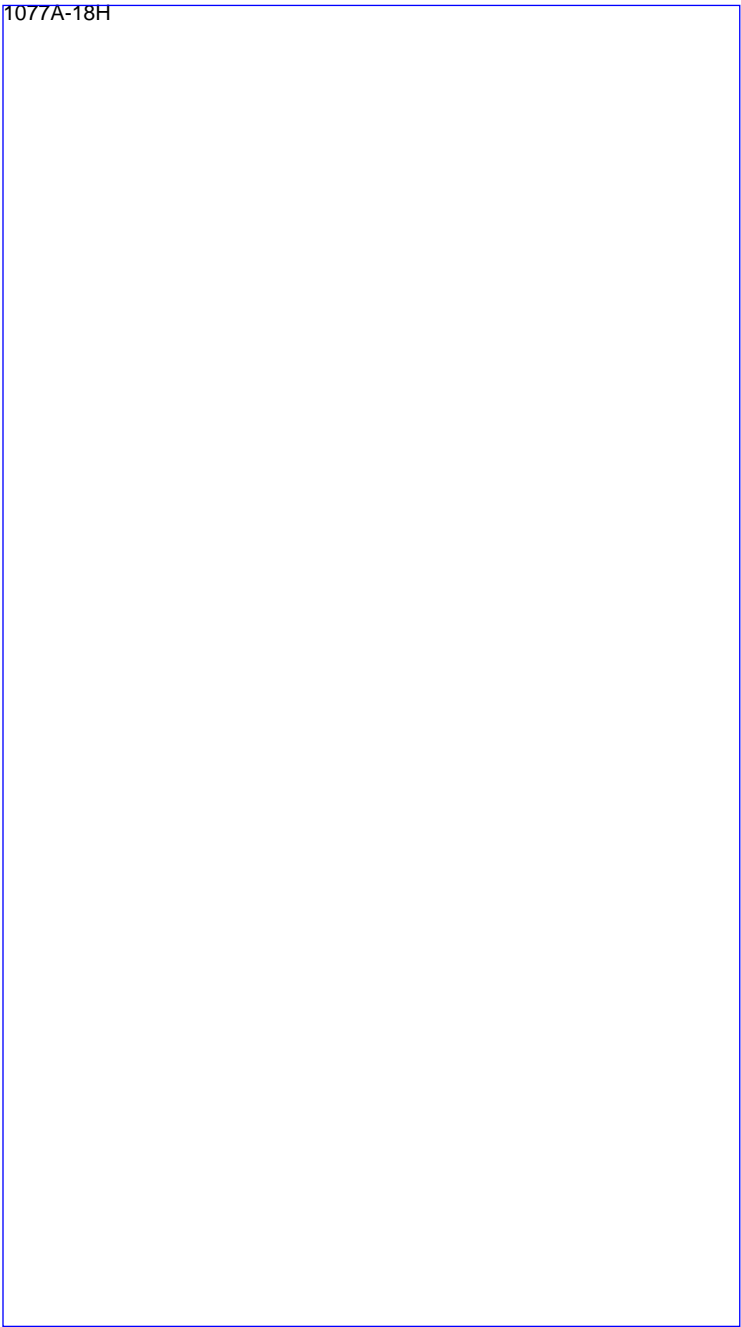


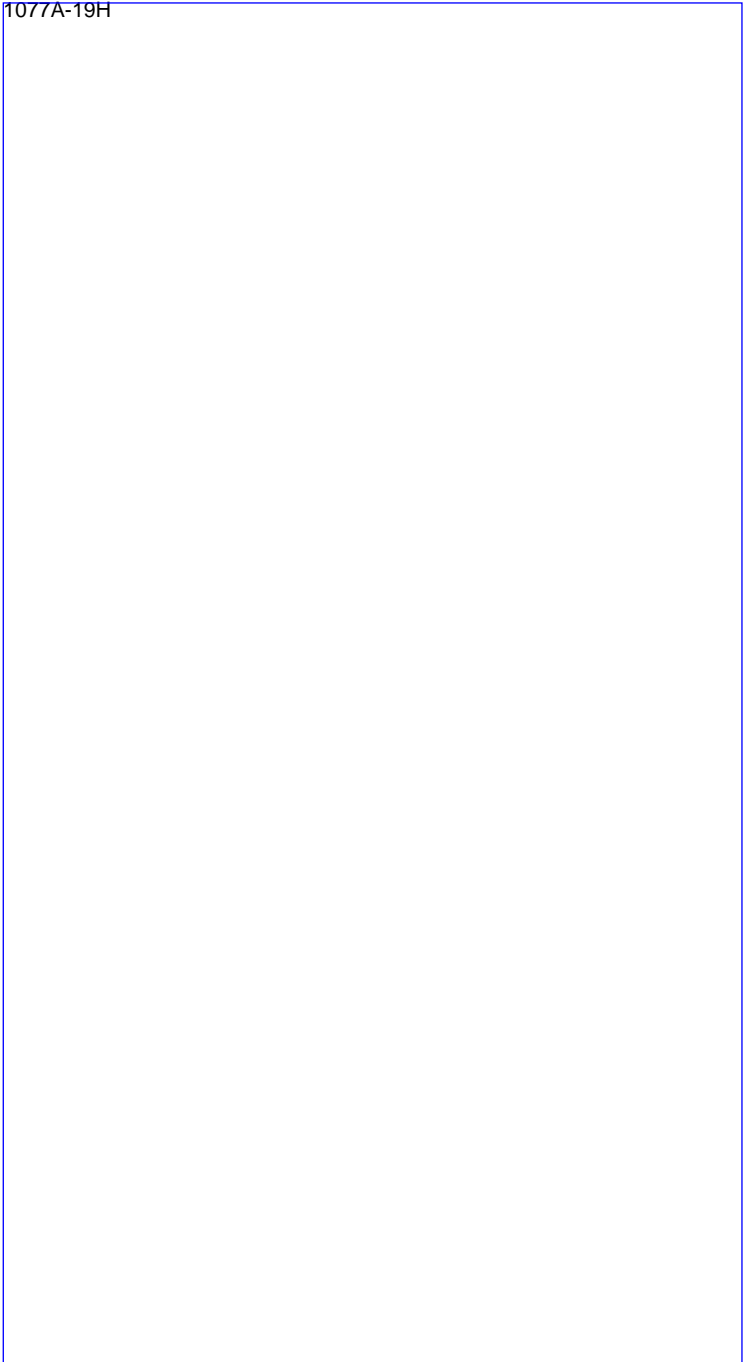
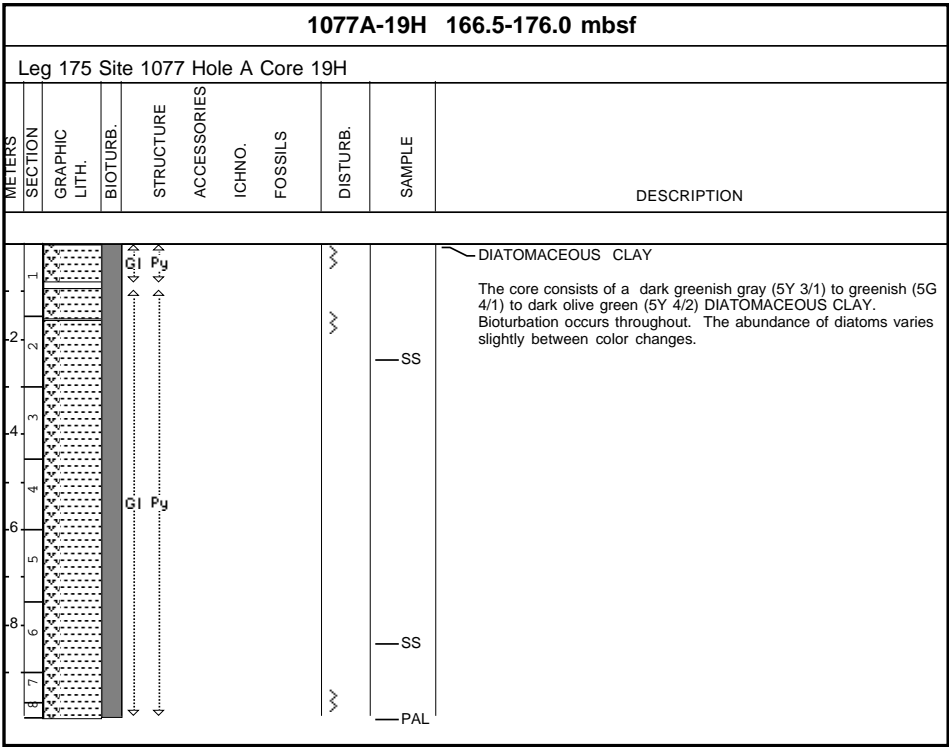


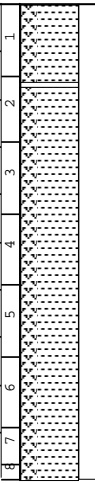
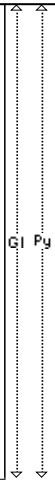
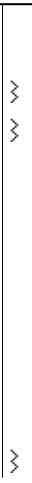




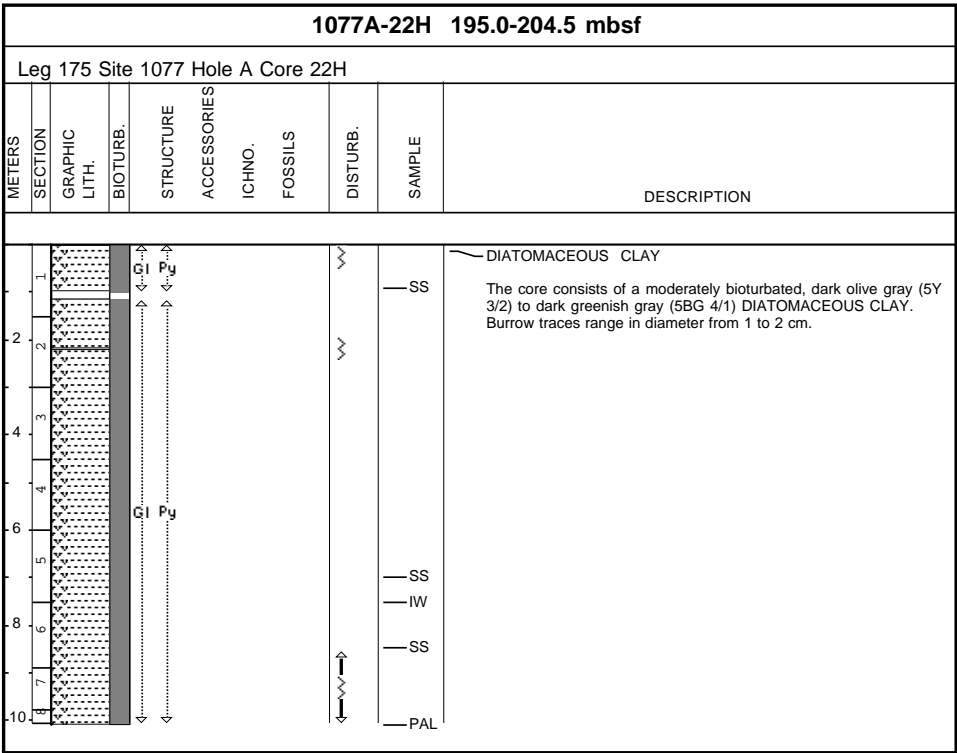
1077A-18H 157.0-166.5 mbsf										
Leg 175 Site 1077 Hole A Core 18H										
METERS	SECTION	GRAPHIC LITH.	BIOTURB.	STRUCTURE	ACCESSORIES	ICHNO.	FOSSILS	DISTURB.	SAMPLE	DESCRIPTION
1 2 3 4 5 6 7										<p>DIATOMACEOUS CLAY</p> <p>The core is a dark greenish gray (5G 4/1), greenish gray (5G 5/1), and dark olive gray (5Y 3/2) DIATOMACEOUS CLAY. Mottling is moderate throughout the core. There is a distinct change in color in Section 4, at 30 cm.</p> <p>PAL</p>

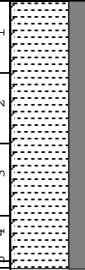








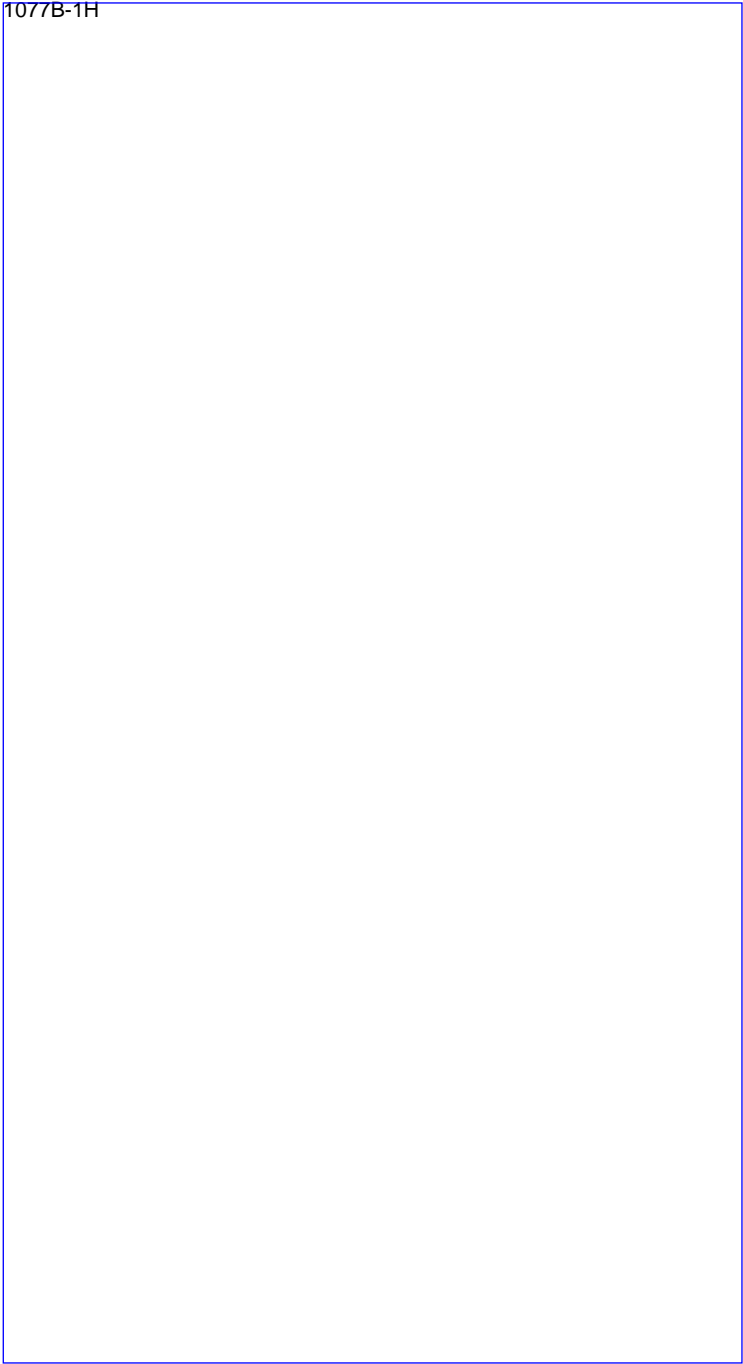


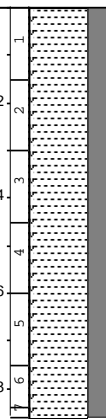
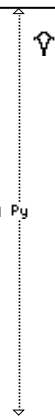
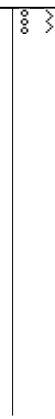
1077A-20H 176.0-185.5 mbsf										
Leg 175 Site 1077 Hole A Core 20H										
METERS	SECTION	GRAPHIC LITH.	BIOTURB.	STRUCTURE	ACCESSORIES	ICHNO.	FOSSILS	DISTURB.	SAMPLE	DESCRIPTION
1 2 3 4 5 6 7 8 9 10									SS IW SS PAL	<p>DIATOMACEOUS CLAY</p> <p>The core consists of an olive gray (5Y 4/2) DIATOMACEOUS CLAY. Bioturbation exists throughout the core. Gas expansion voids exists at the bottom of the core.</p>



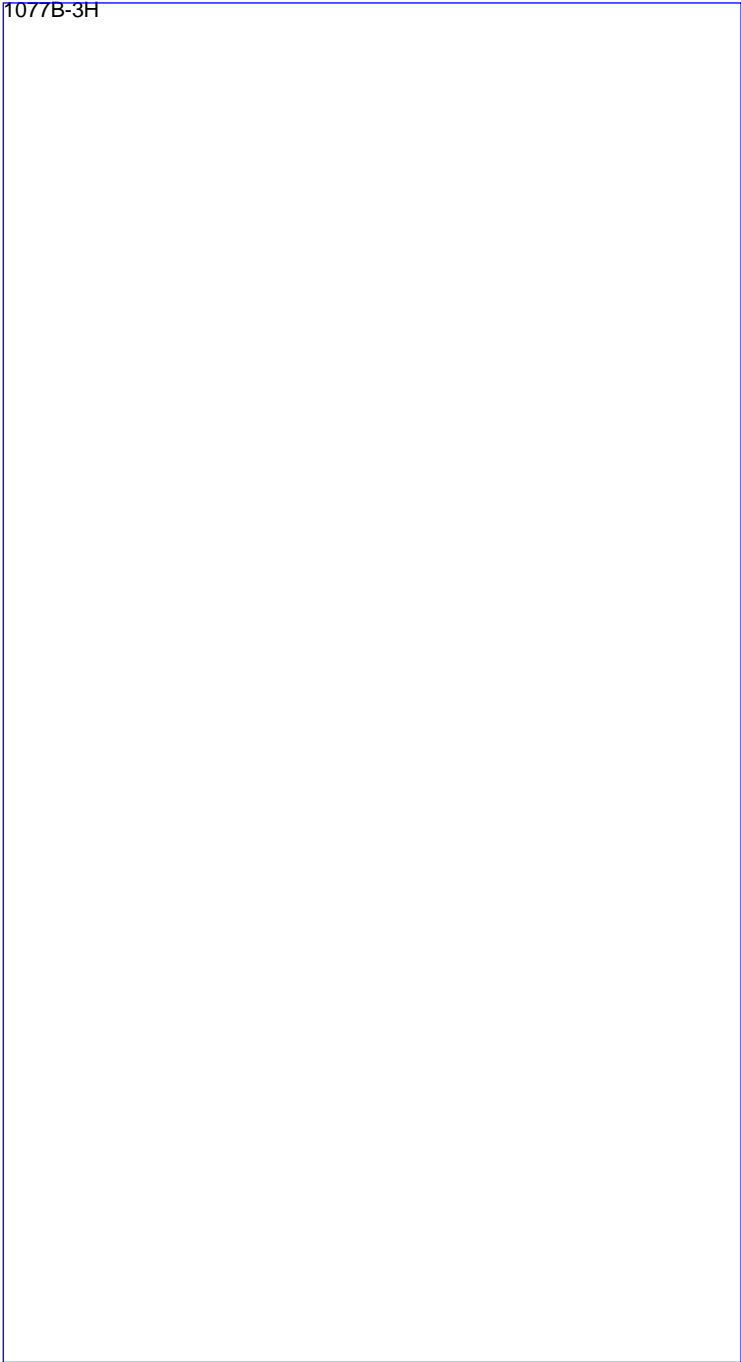
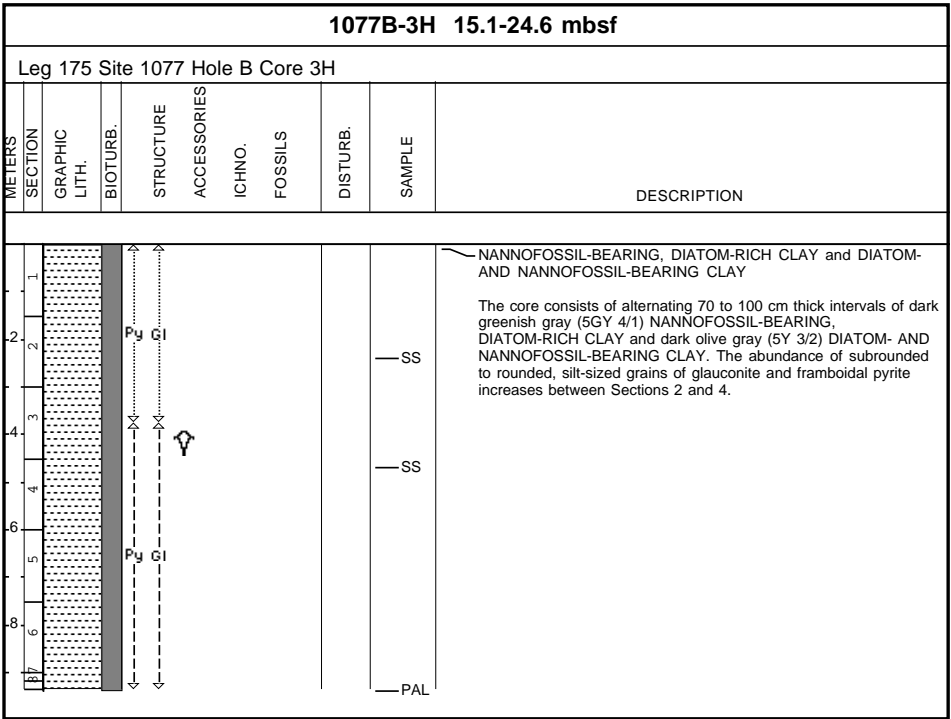


1077B-1H 0.0-5.6 mbsf										
Leg 175 Site 1077 Hole B Core 1H										
METERS	SECTION	GRAPHIC LITH.	BIOTURB.	STRUCTURE	ACCESSORIES	ICHNO.	FOSSILS	DISTURB.	SAMPLE	DESCRIPTION
0.0	1									DIATOM-RICH CLAY
0.5	2									The core consists of a moderately bioturbated, dark olive gray (5Y 3/2) DIATOM-RICH CLAY. Gas expansion voids are present in Section1, 50 cm, and Section 3, 5 cm.
1.0	3									
1.5	4								SS	
2.0	5								PAL	



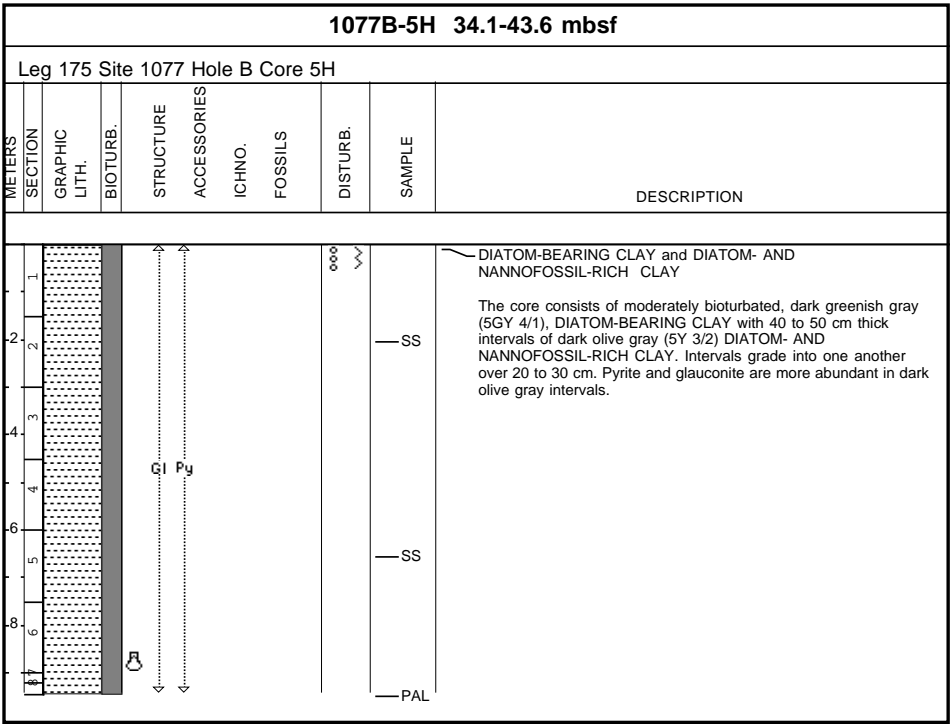
1077B-2H 5.6-15.1 mbsf										
Leg 175 Site 1077 Hole B Core 2H										
METERS	SECTION	GRAPHIC LITH.	BIOTURB.	STRUCTURE	ACCESSORIES	ICHNO.	FOSSILS	DISTURB.	SAMPLE	DESCRIPTION
1 2 3 4 5 6 7 8										<p>~ NANNOFOSSIL-BEARING, DIATOM-RICH CLAY</p> <p>The core consists of a moderately bioturbated, olive gray (5Y 5/1) to dark olive gray (5Y 3/2) colored NANNOFOSSIL-BEARING, DIATOM-RICH CLAY.</p> <p>— SS</p> <p>— PAL</p>

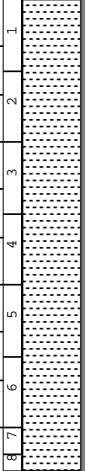




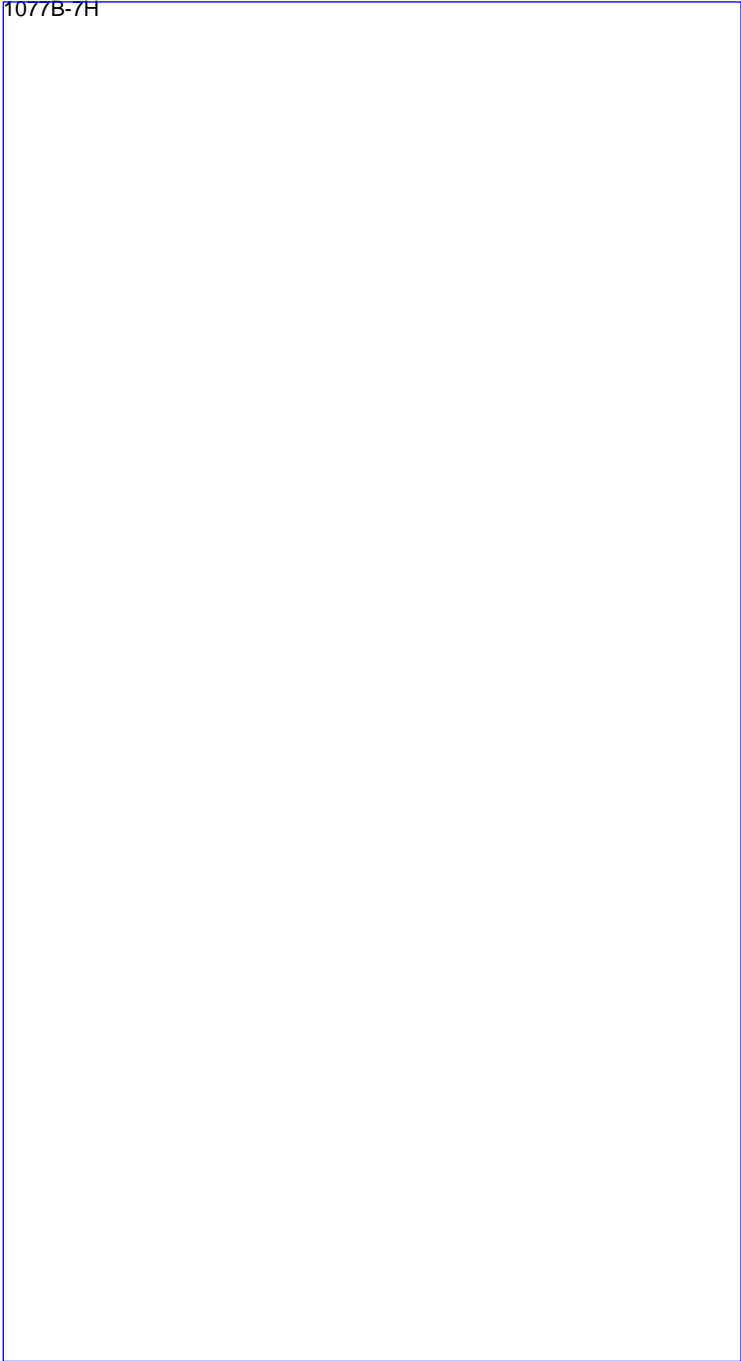
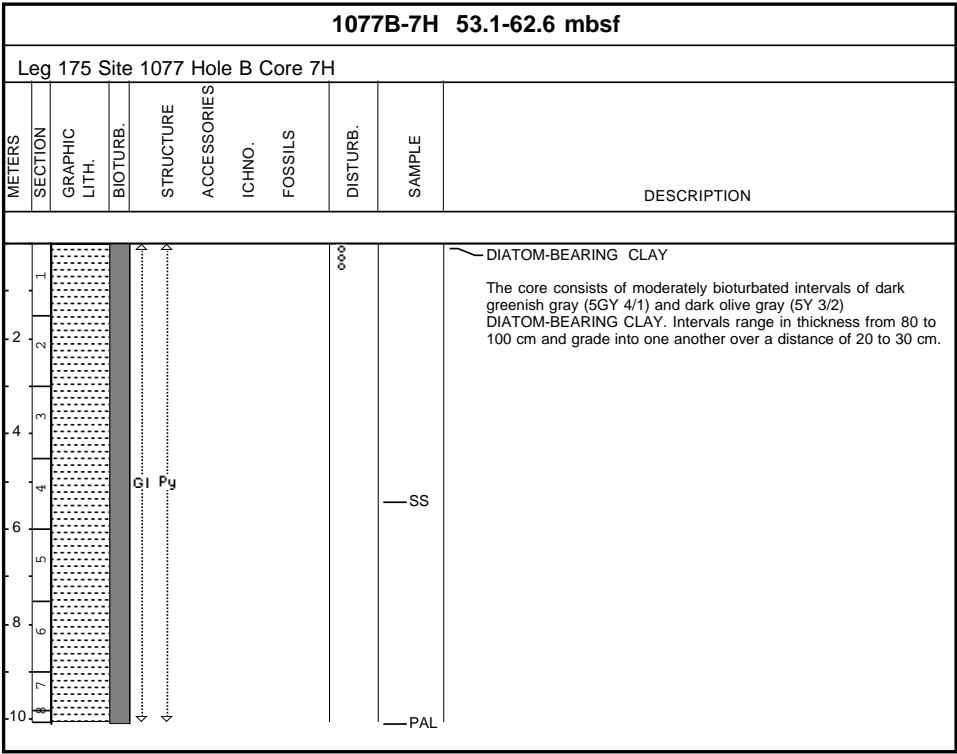
1077B-4H 24.6-34.1 mbsf										
Leg 175 Site 1077 Hole B Core 4H										
METERS	SECTION	GRAPHIC LITH.	BIOTURB.	STRUCTURE	ACCESSORIES	ICHNO.	FOSSILS	DISTURB.	SAMPLE	DESCRIPTION
1										<div>DIATOM-BEARING CLAY and NANNOFOSSIL-RICH, DIATOM-BEARING CLAY</div> <div>The core consists of a moderately bioturbated, dark greenish gray (5Y 3/2) DIATOM-BEARING CLAY with a 200 cm interval of dark olive gray (5Y 3/2) NANNOFOSSIL-RICH, DIATOM-BEARING CLAY which begins in the middle of Section 3. Shell fragments are present in Section 3, 42 cm.</div>
2										
3										
4										
5										
6										
7										
8										





1077B-6H 43.6-53.1 mbsf							
Leg 175 Site 1077 Hole B Core 6H							
METERS	SECTION	GRAPHIC LITH.	BIOTURB.	STRUCTURE	ACCESSORIES		
				ICHNO.	FOSSILS	DISTURB.	
						SAMPLE	
						DESCRIPTION	
0							DIATOM- AND NANNOFOSSIL-RICH CLAY and DIATOM-BEARING CLAY The core consists of a moderately bioturbated, dark greenish gray (5GY 4/1), DIATOM- AND NANNOFOSSIL-RICH CLAY with 30 to 40 cm thick intervals of dark olive gray (5Y 3/2) DIATOM-BEARING CLAY. Intervals grade into one another over 20 to 30 cm. Pyrite and glauconite are more abundant in dark olive gray intervals. There is a 3 cm thick package of dark greenish gray clay with sharp lower and upper contacts in Section 5, 135 cm.
1							
2							
3							
4							— SS
5							
6							
7							— SS
8							— PAL

1077B-6H



1077B-8H 62.6-72.1 mbsf									
Leg 175 Site 1077 Hole B Core 8H									
METERS	SECTION	GRAPHIC LITH.	BIOTURB.	STRUCTURE	ACCESSORIES	ICHNO.	FOSSILS	DISTURB.	SAMPLE
DESCRIPTION									
1									
2									
3									
4									
5									
6									
7									
8									
9									
10									

DIATOM-BEARING CLAY

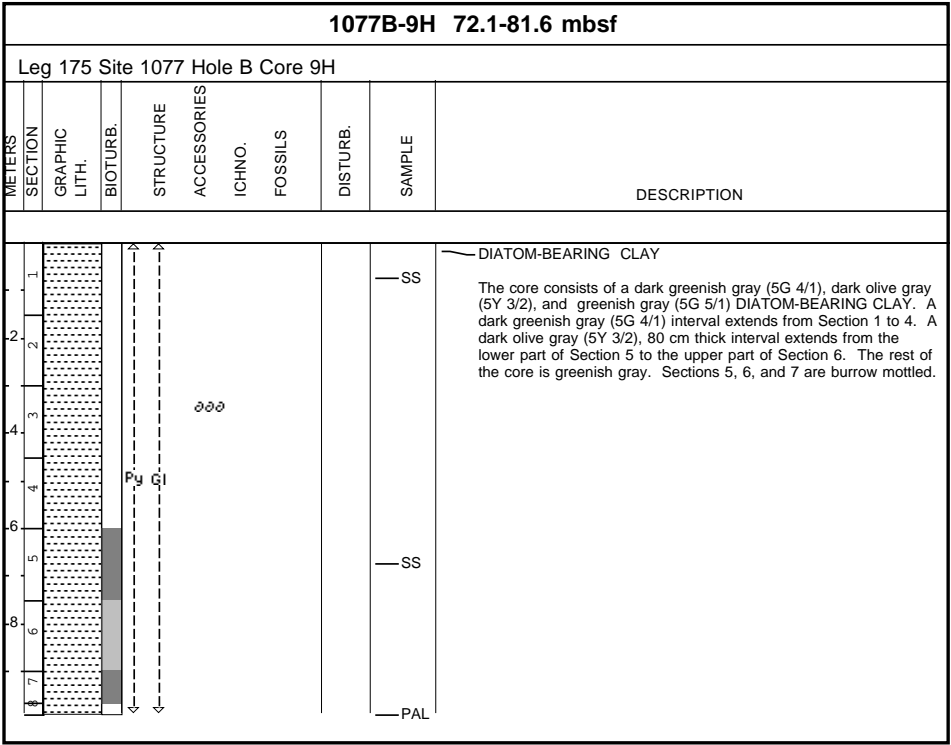
The core consists of a moderately bioturbated, dark greenish gray (5GY 4/1) DIATOM-BEARING CLAY. The color is more homogeneous than in cores from the upper part of the section. Burrow traces range in diameter from 1 to 2 cm.

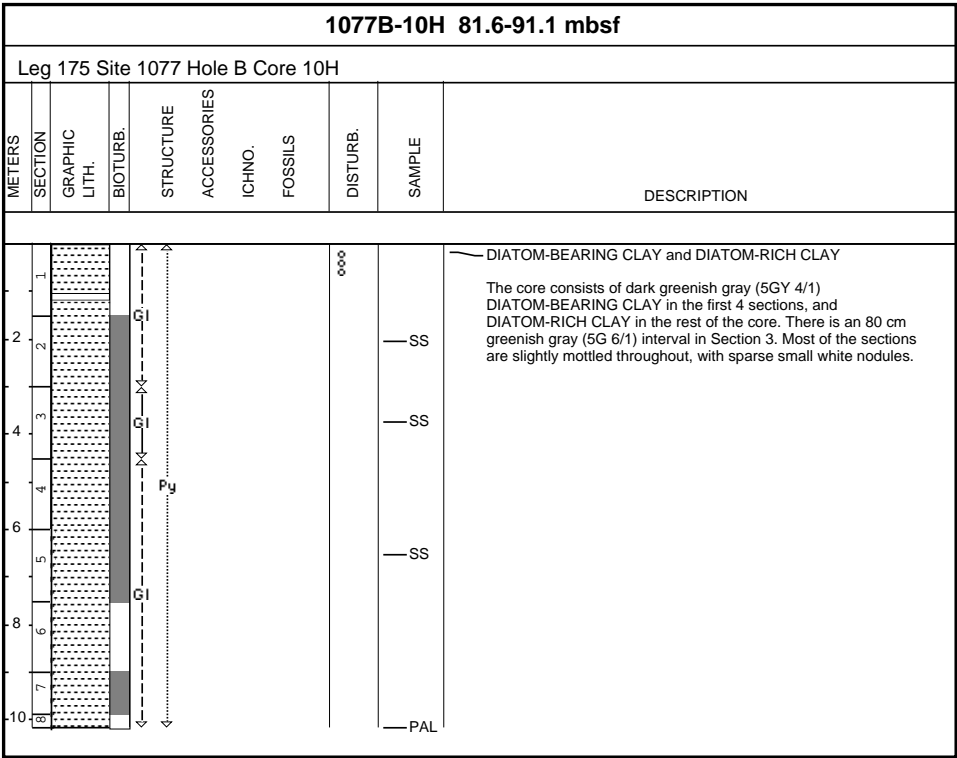
SS

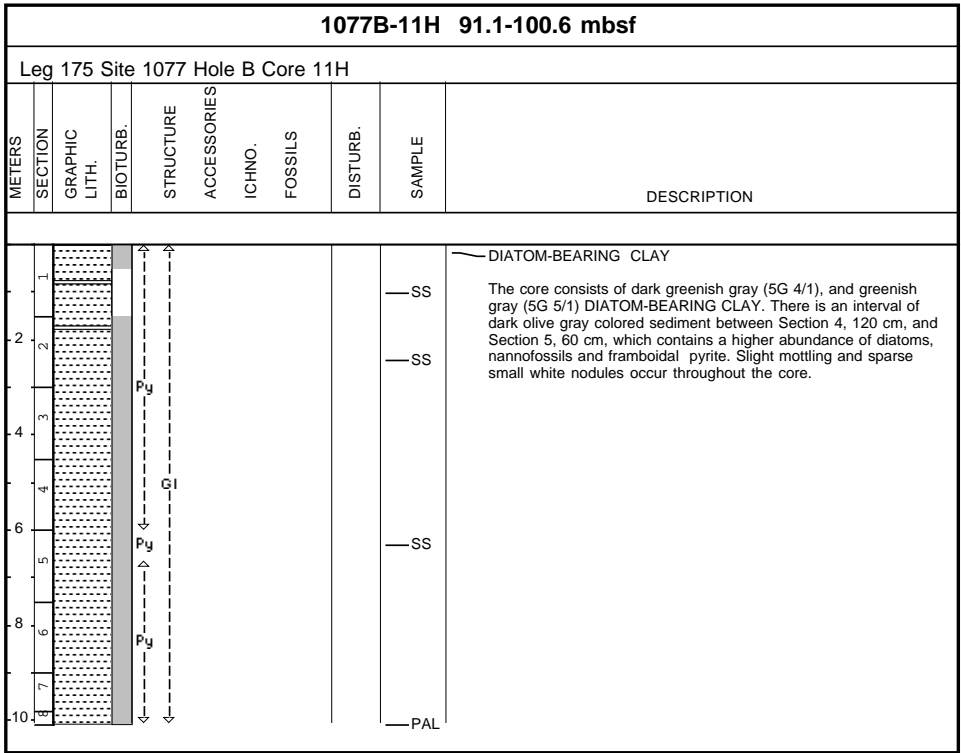
PAL

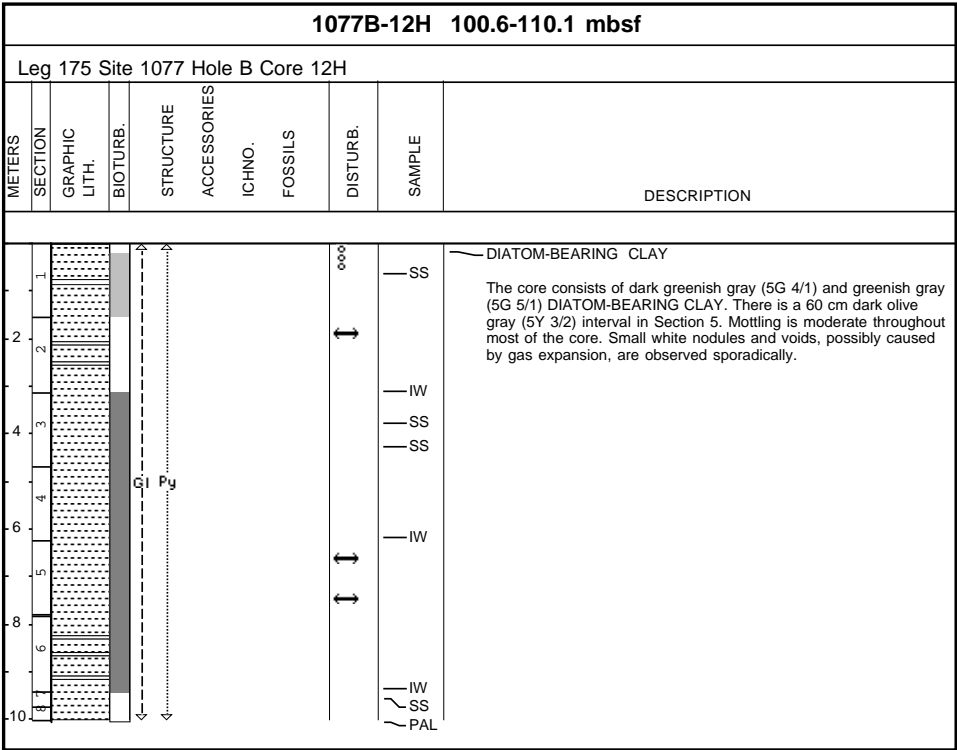
GI Py

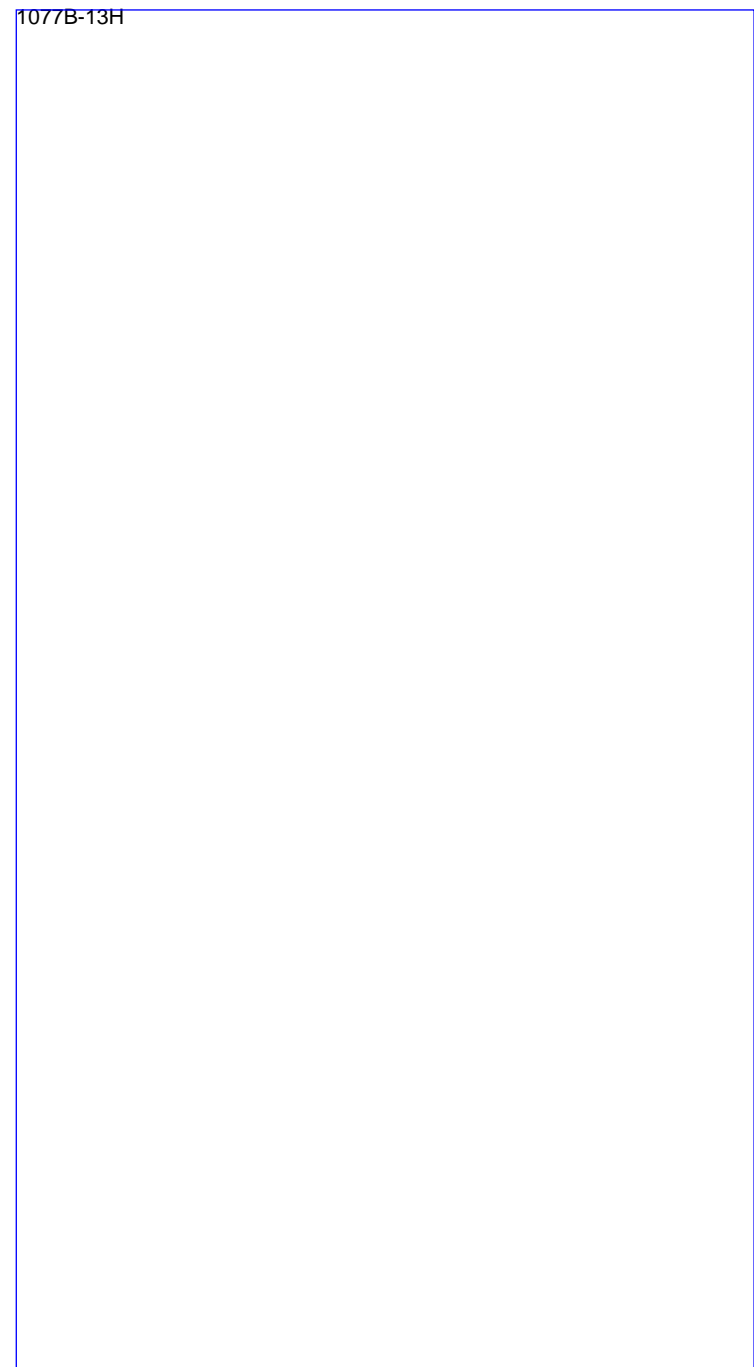
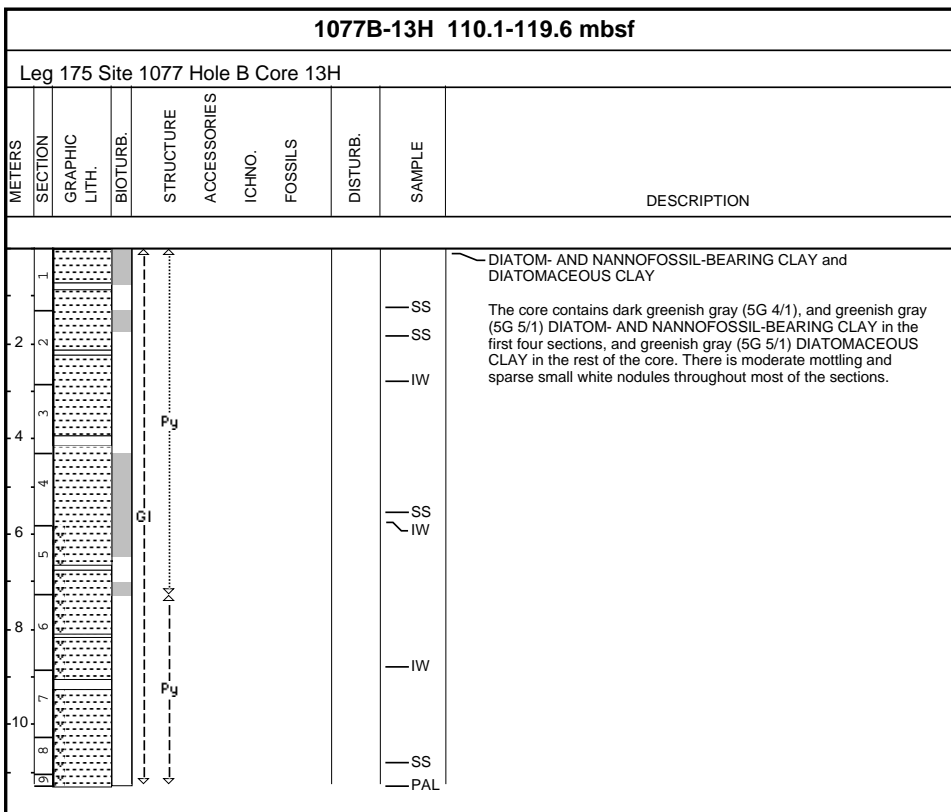
1077B-8H

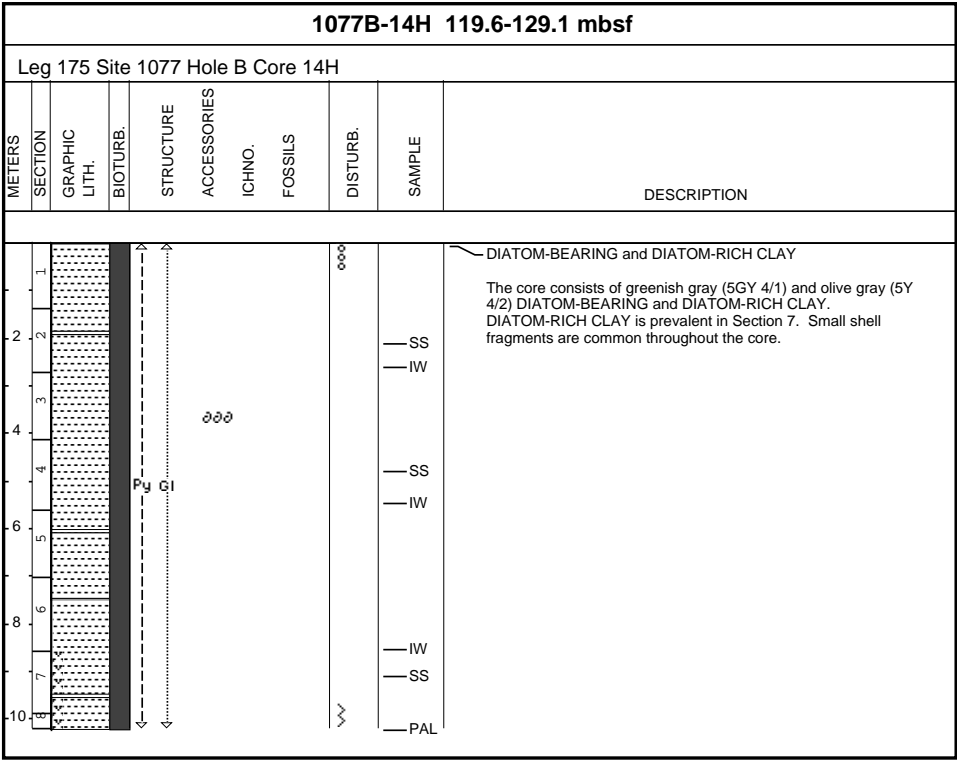


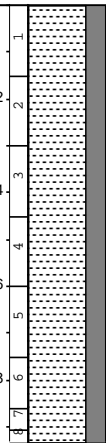
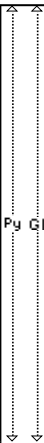






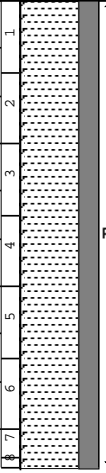




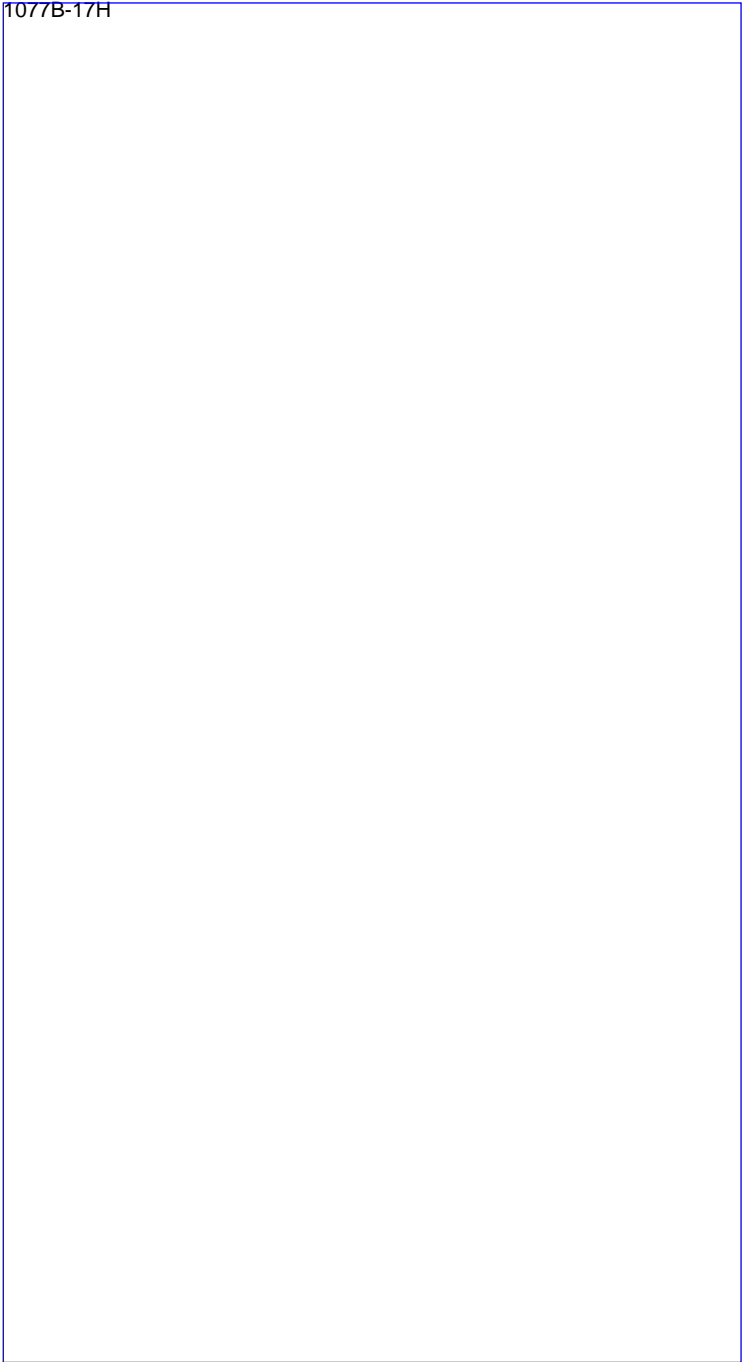
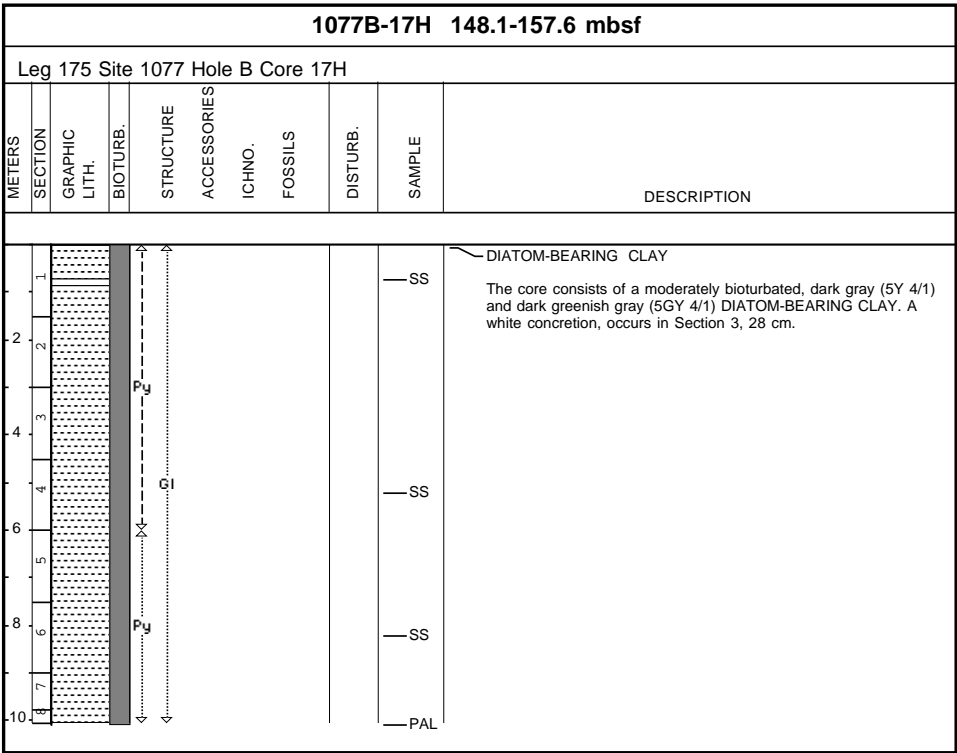


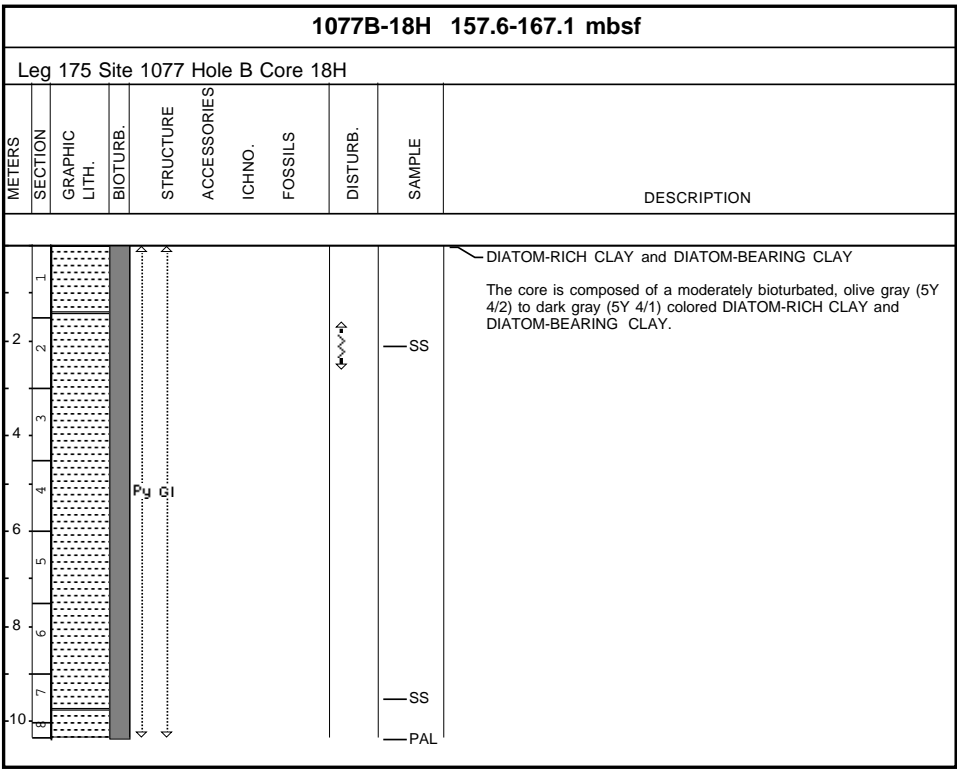
1077B-15H 129.1-138.6 mbsf											
Leg 175 Site 1077 Hole B Core 15H											
METERS	SECTION	GRAPHIC LITH.	BIOTURB.	STRUCTURE	ACCESSORIES	ICHNO.	FOSSILS	DISTURB.	SAMPLE	DIAGENESIS	DESCRIPTION
1 2 3 4 5 6 7 8											<p>CLAY and DIATOM-RICH CLAY</p> <p>The core consists of olive gray (5Y 4/2) and dark gray (5Y 4/1) DIATOM-RICH CLAY and greenish gray (5G 4/1) CLAY. A sharp color change occurs from greenish gray CLAY to olive gray DIATOM-RICH CLAY. The contact is only mildly bioturbated. Two additional, bioturbated contacts in Section 5 show color changes from dark greenish gray DIATOM-RICH CLAY to olive gray DIATOM-RICH CLAY.</p>

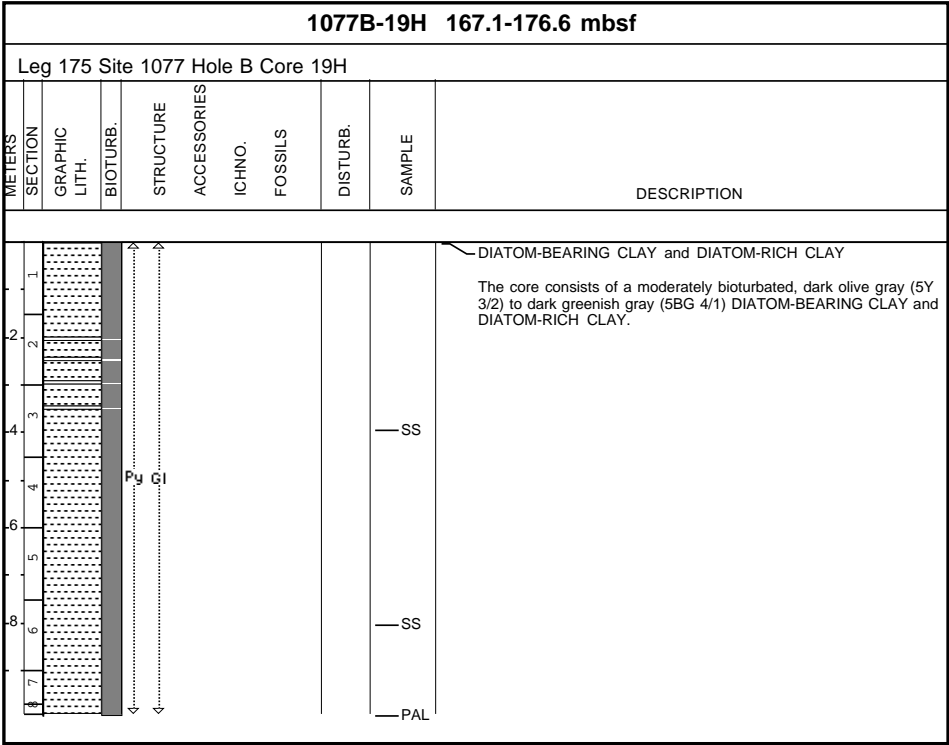


1077B-16H 138.6-148.1 mbsf										
Leg 175 Site 1077 Hole B Core 16H										
METERS	SECTION	GRAPHIC LITH.	BIOTURB.	STRUCTURE	ACCESSORIES	ICHNO.	FOSSILS	DISTURB.	SAMPLE	DESCRIPTION
1 2 3 4 5 6 7 8									SS SS SS PAL	<p>DIATOM-RICH CLAY</p> <p>The core consists of moderately bioturbated, dark gray (5Y 4/1), olive gray (5Y 4/2), and dark greenish gray (5GY 4/1) DIATOM-RICH CLAY.</p>



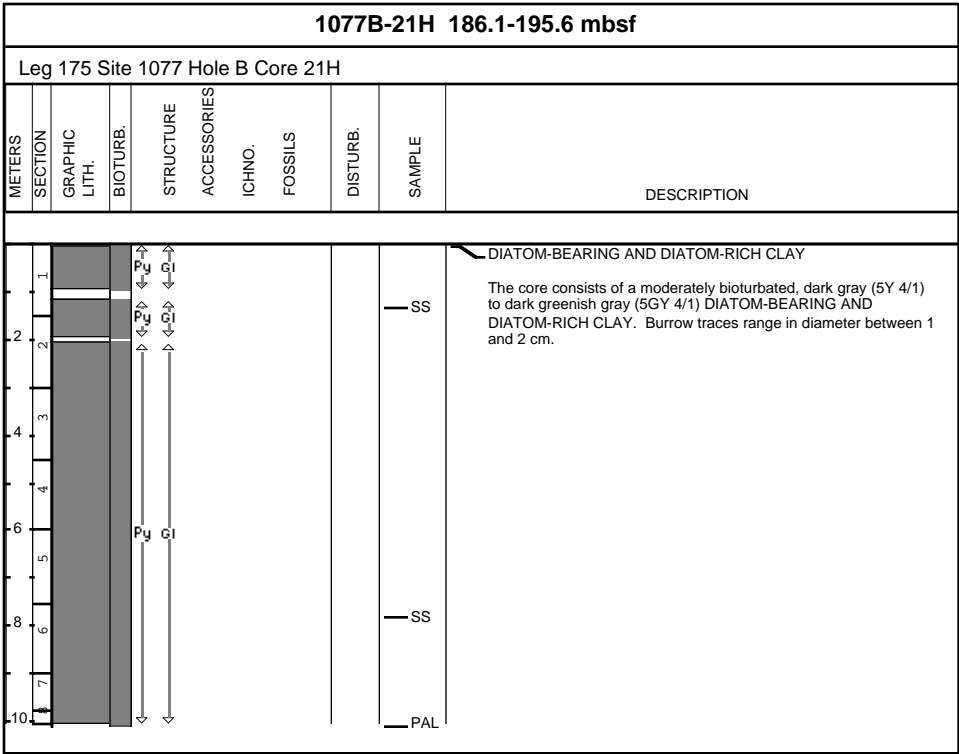






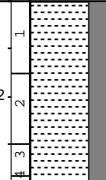
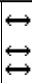
1077B-20H 176.6-186.1 mbsf						
Leg 175 Site 1077 Hole B Core 20H						
METERS	SECTION	GRAPHIC LITH.	BIOTURB.	STRUCTURE	ACCESSORIES	DESCRIPTION
				ICHNO.	FOSSILS	
				DISTURB.		
					SAMPLE	
1						DIATOM-BEARING CLAY
2						The core is consisted of a moderately bioturbated, dark gray (5Y 3/1) to dark olive gray (5Y 4/1) colored DIATOM-BEARING CLAY. Shell fragments are disseminated throughout the core.
3						SS
4						
5						SS
6						
7						PAL

1077B-20H



1077B-22H 195.6-205.1 mbsf										
Leg 175 Site 1077 Hole B Core 22H										
METERS	SECTION	GRAPHIC LITH.	BIOTURB.	STRUCTURE	ACCESSORIES	ICHO.	FOSSILS	DISTURB.	SAMPLE	DESCRIPTION
1										DIATOM-RICH CLAY The core consists of a moderately bioturbated, dark gray (5Y 4/1) to dark greenish gray (5GY 4/1) DIATOM-RICH CLAY. Spotty shell fragments are randomly distributed downcore.
2									SS	
3										
4										
5									SS	
6										
7										
10									PAL	



1077C-1H 0.0-3.8 mbsf										
Leg 175 Site 1077 Hole C Core 1H										
METERS	SECTION	GRAPHIC LITH.	BIOTURB.	STRUCTURE	ACCESSORIES	ICHNO.	FOSSILS	DISTURB.	SAMPLE	DESCRIPTION
0.0 1.0 2.0 3.0										<p>DIATOM-BEARING CLAY</p> <p>The core consists of moderately bioturbated, dark gray (5Y 4/1) to dark greenish gray (5GY 4/1) DIATOM-BEARING CLAY. Burrow traces are 7 to 10 mm in diameter.</p>



1077C-2H 3.8-13.3 mbsf										
Leg 175 Site 1077 Hole C Core 2H										
METERS	SECTION	GRAPHIC LITH.	BIOTURB.	STRUCTURE	ACCESSORIES	ICHNO.	FOSSILS	DISTURB.	SAMPLE	DESCRIPTION
1 2 3									SS PAL	<p>DIATOM-BEARING CLAY</p> <p>The core is composed by a moderately bioturbated, dark olive green (5Y 3/2) DIATOM-BEARING CLAY. Burrowing traces range in diameter from 1 and 2 cm throughout the core.</p>



