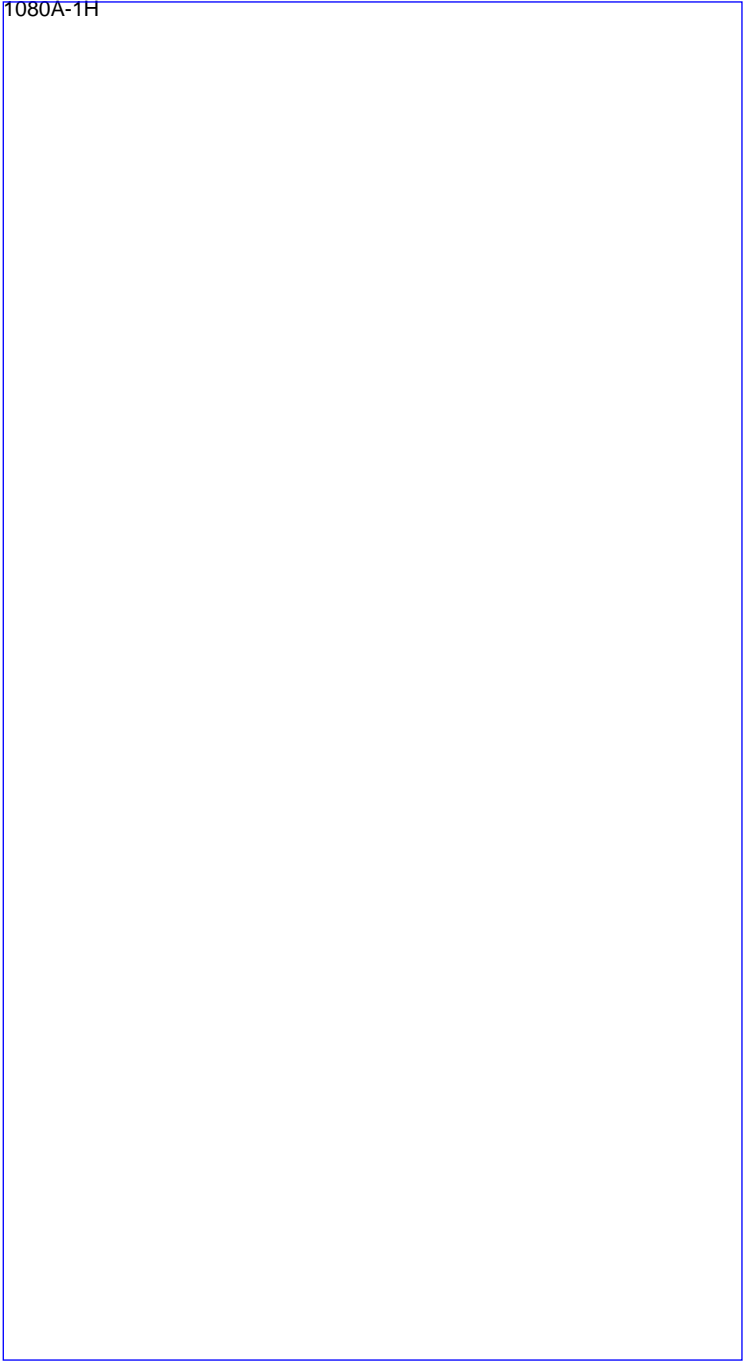
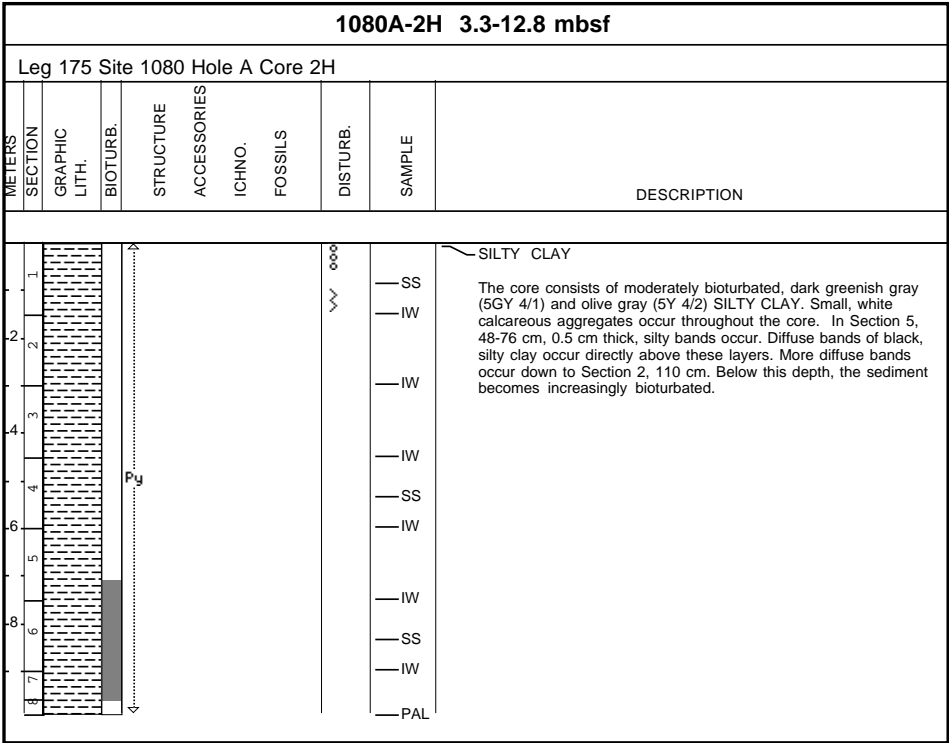
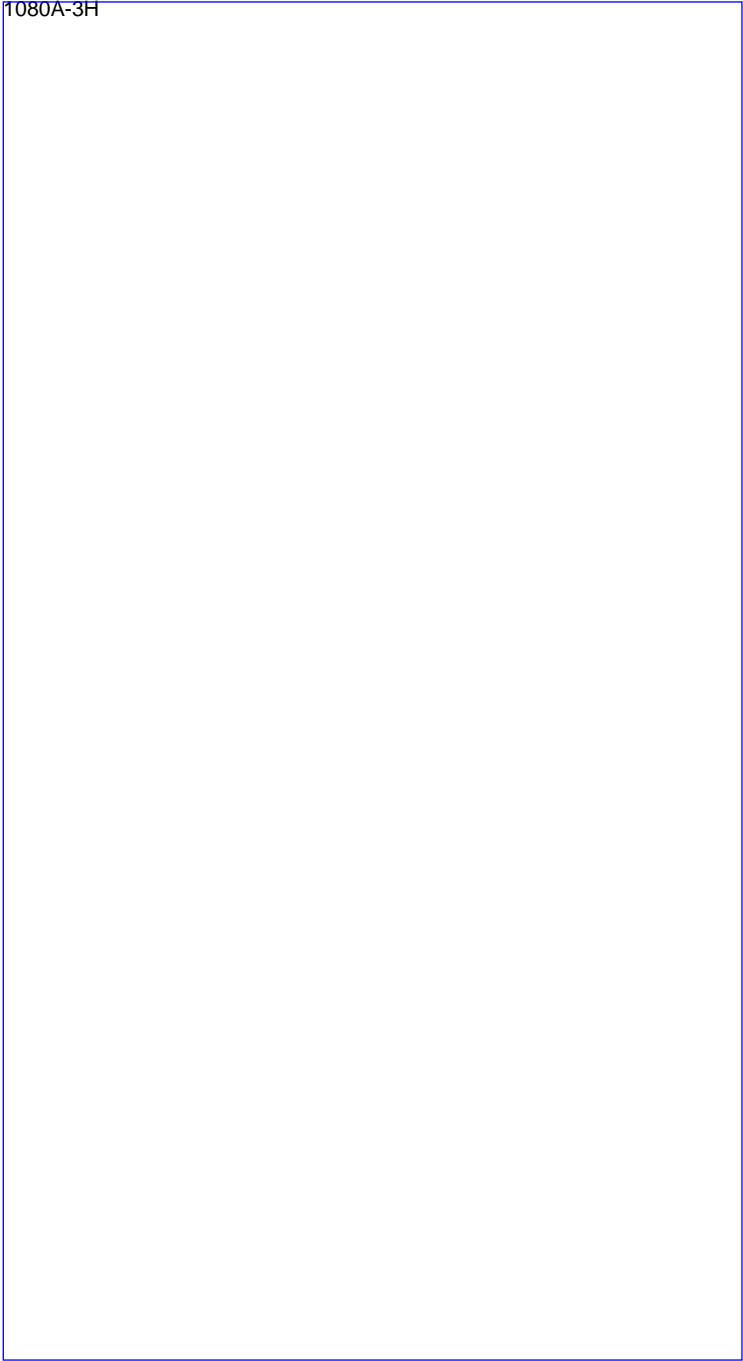
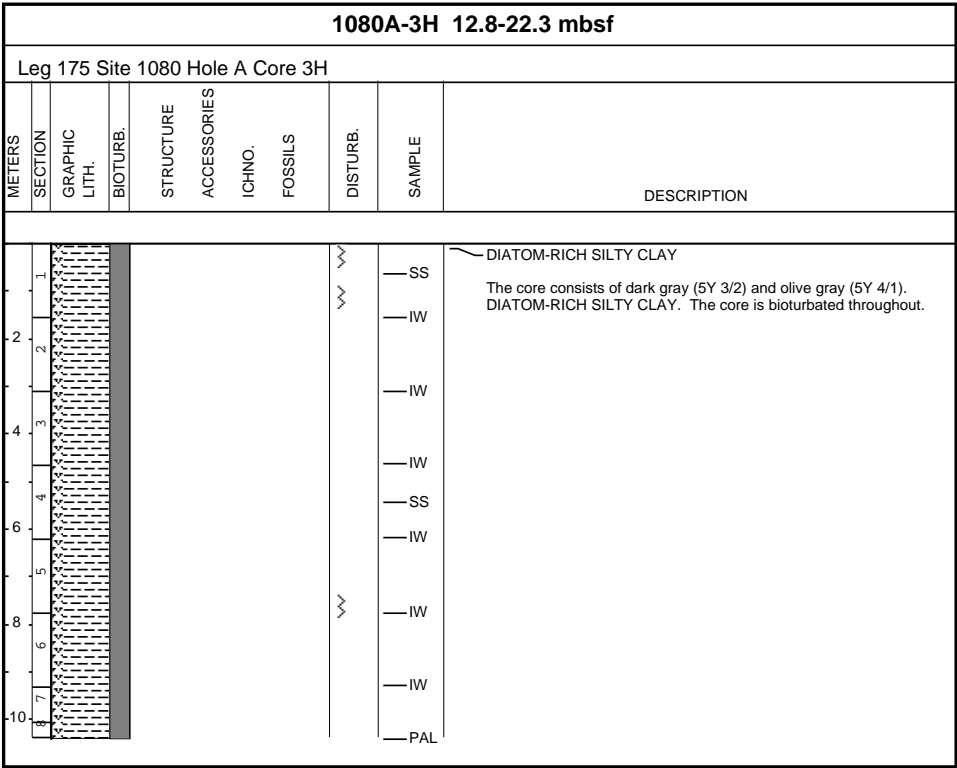


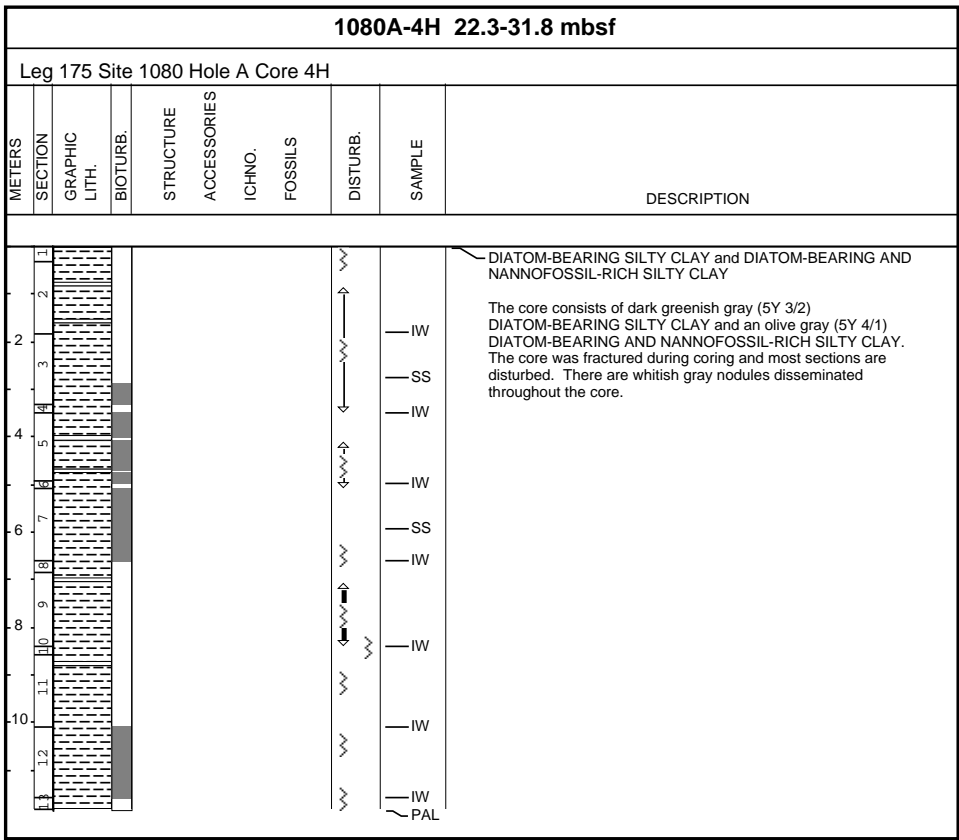


| 1080A-1H 0.0-3.3 mbsf | | | | | | | | | | |
|----------------------------------|---------|---------------|----------|-----------|-------------|--------|---------|----------|---------------------|--|
| Leg 175 Site 1080 Hole A Core 1H | | | | | | | | | | |
| METERS | SECTION | GRAPHIC LITH. | BIOTURB. | STRUCTURE | ACCESSORIES | ICHNO. | FOSSILS | DISTURB. | SAMPLE | DESCRIPTION |
| 1 2 | | | | | | | | | IW IW PAL | NANNOFOSSIL- AND FORAMINIFER-BEARING, DIATOM-RICH SILTY CLAY The core consists of homogeneous, dark greenish gray (5GY 4/1 and 5G 4/1) NANNOFOSSIL-AND FORAMINIFER-BEARING, DIATOM-RICH SILTY CLAY. |

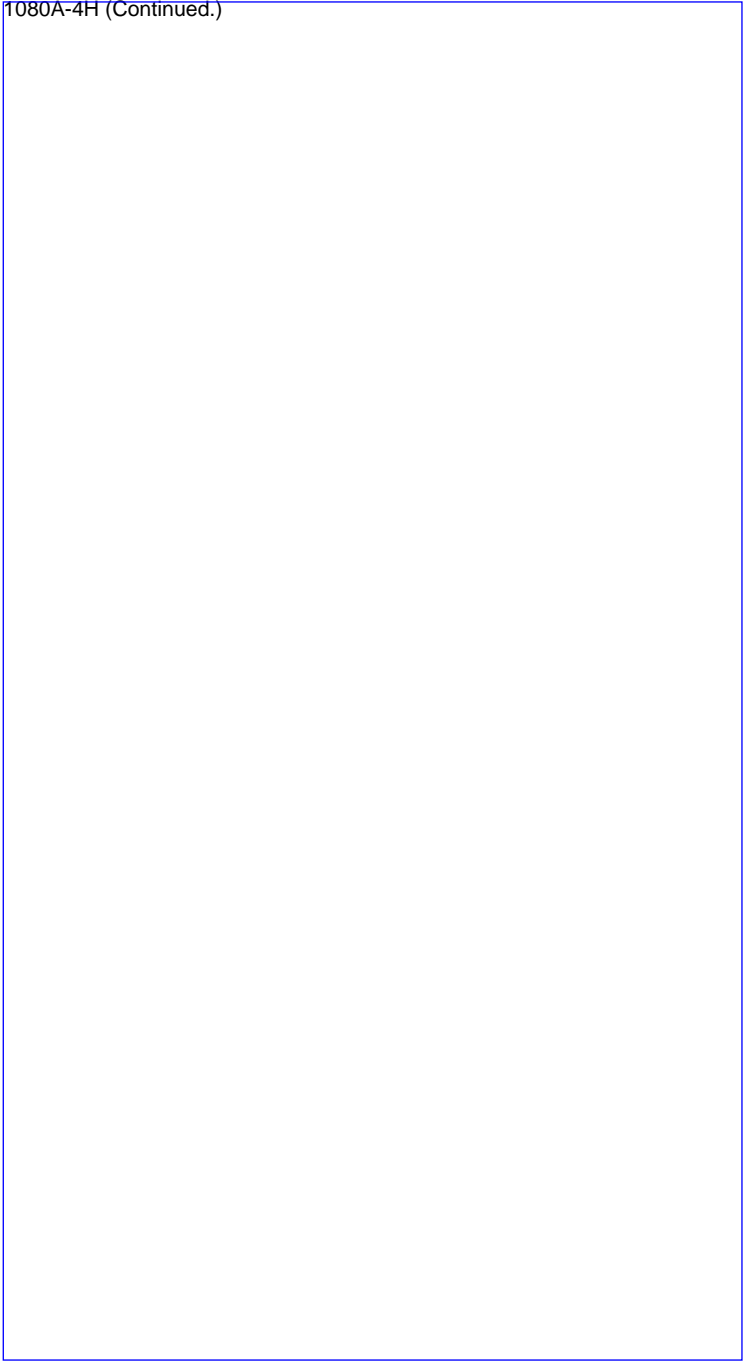
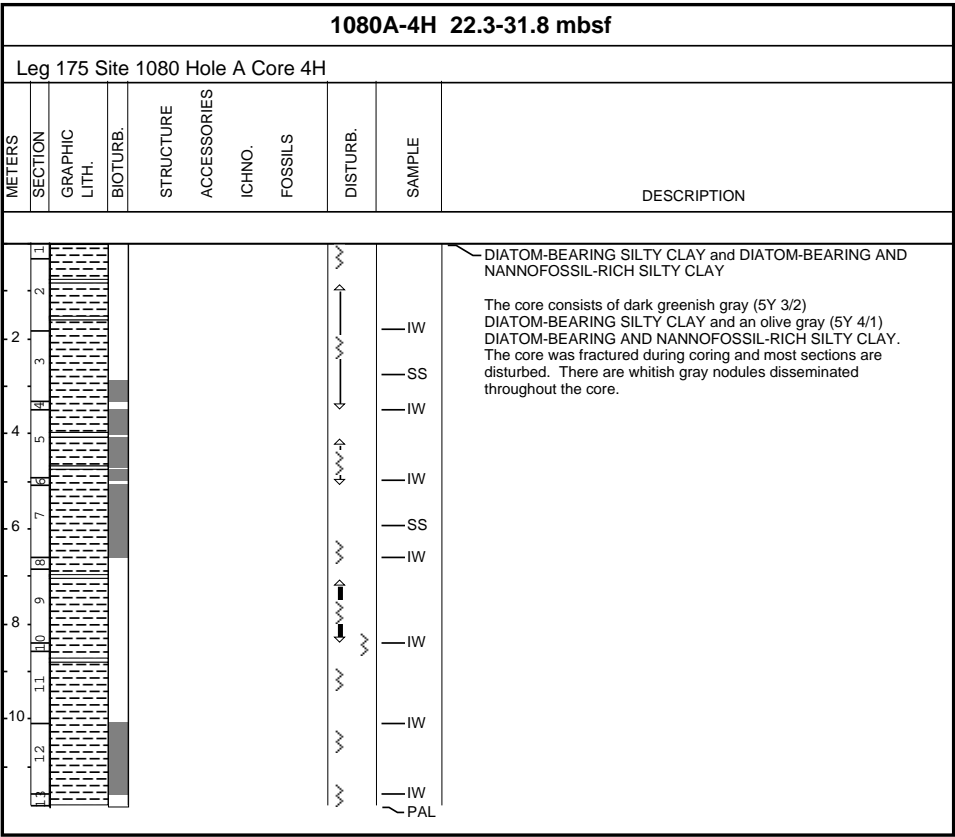


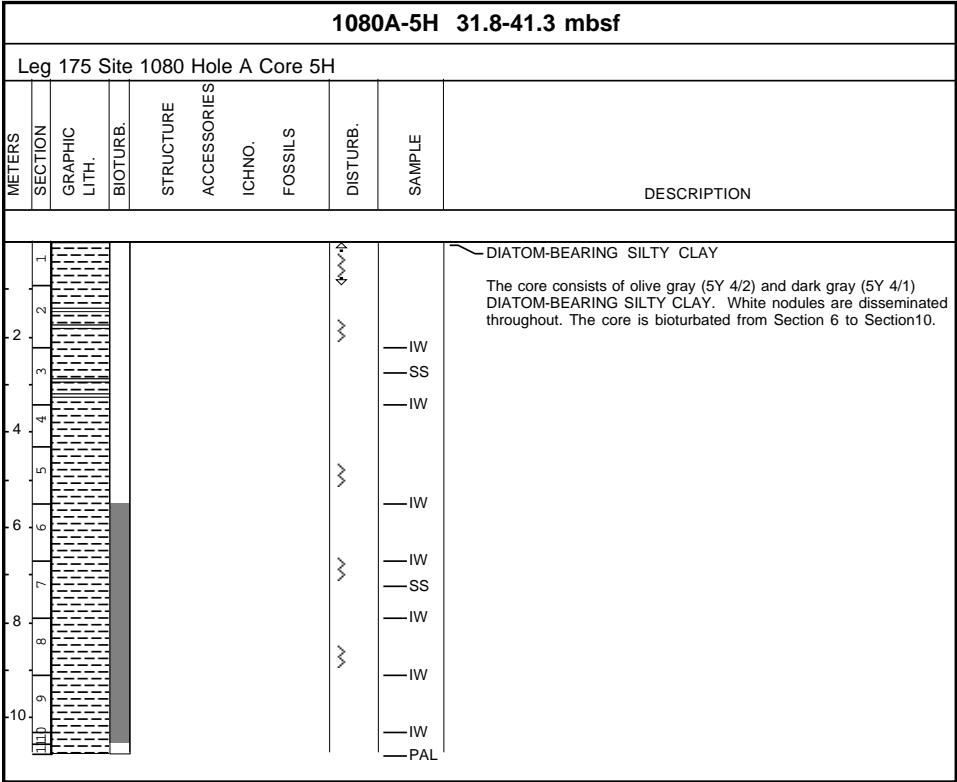






1080A-4H (Continued next page.)





1080A-5H (Continued next page.)

| 1080A-5H 31.8-41.3 mbsf | | | | | | | | |
|---|---------|---------------|----------|-----------|-------------|----------|---|--|
| Leg 175 Site 1080 Hole A Core 5H | | | | | | | | |
| METERS | SECTION | GRAPHIC LITH. | BIOTURB. | STRUCTURE | ACCESSORIES | ICHNO. | FOSILS | |
| | | | | | | DISTURB. | SAMPLE | |
| DESCRIPTION | | | | | | | | |
| 1 2 3 4 5 6 7 8 9 10 | | | | | | | IW SS IW IW IW SS IW IW PAL | DIATOM-BEARING SILTY CLAY The core consists of olive gray (5Y 4/2) and dark gray (5Y 4/1) DIATOM-BEARING SILTY CLAY. White nodules are disseminated throughout. The core is bioturbated from Section 6 to Section 10. |

1080A-5H (Continued.)

| 1080A-6H 41.3-50.8 mbsf | | | | | | | | | | |
|----------------------------------|---------|---------------|----------|-----------|-------------|---------|---------|----------|--------|--|
| Leg 175 Site 1080 Hole A Core 6H | | | | | | | | | | |
| METERS | SECTION | GRAPHIC LITH. | BIOTURB. | STRUCTURE | ACCESSORIES | IC-HNO. | FOSSILS | DISTURB. | SAMPLE | DESCRIPTION |
| 1 | | | | | | | | | | <p>DIATOM-BEARING SILTY CLAY</p> <p>The core consists of a dark olive gray (5Y 3/2), DIATOM-BEARING SILTY CLAY. The color changes to dark gray (5Y 4/1) in some intervals. Small, white nodules are concentrated within a short interval in Section 7, 78-79 cm.</p> |
| 2 | | | | | | | | | IW | |
| 3 | | | | | | | | | SS | |
| 4 | | | | | | | | | IW | |
| 5 | | | | | | | | | IW | |
| 6 | | | | | | | | | IW | |
| 7 | | | | | | | | | SS | |
| 8 | | | | | | | | | IW | |
| 9 | | | | | | | | | IW | |
| 10 | | | | | | | | | PAL | |

1080A-6H (Continued next page.)

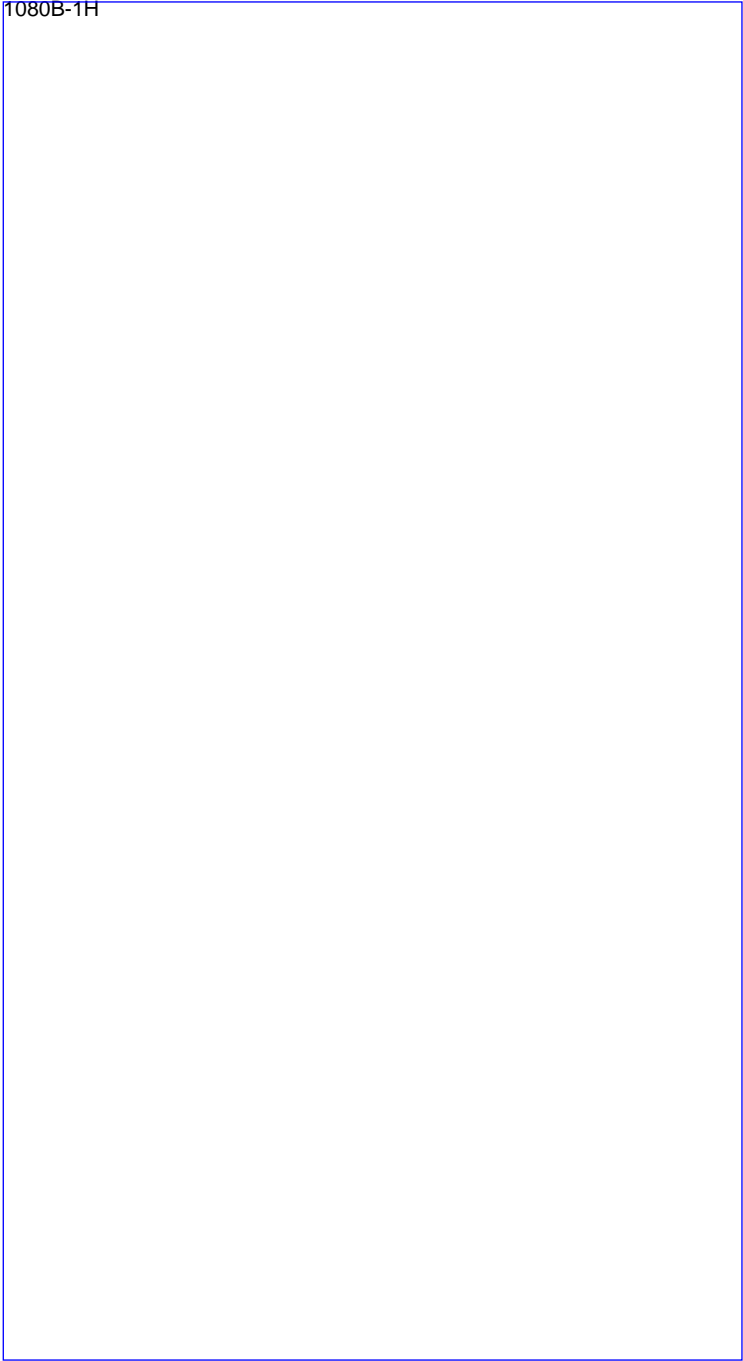
| 1080A-6H 41.3-50.8 mbsf | | | | | | | | | | |
|----------------------------------|---------|---------------|----------|-----------|-------------|-------|---------|----------|--------|--|
| Leg 175 Site 1080 Hole A Core 6H | | | | | | | | | | |
| METERS | SECTION | GRAPHIC LITH. | BIOTURB. | STRUCTURE | ACCESSORIES | ICHO. | FOSSILS | DISTURB. | SAMPLE | DESCRIPTION |
| 1 | | | | | | | | | | <p>DIATOM-BEARING SILTY CLAY</p> <p>The core consists of a dark olive gray (5Y 3/2), DIATOM-BEARING SILTY CLAY. The color changes to dark gray (5Y 4/1) in some intervals. Small, white nodules are concentrated within a short interval in Section 7, 78-79 cm.</p> |
| 2 | | | | | | | | | IW | |
| 3 | | | | | | | | | SS | |
| 4 | | | | | | | | | IW | |
| 5 | | | | | | | | | IW | |
| 6 | | | | | | | | | SS | |
| 7 | | | | | | | | | IW | |
| 8 | | | | | | | | | IW | |
| 9 | | | | | | | | | PAL | |
| 10 | | | | | | | | | | |

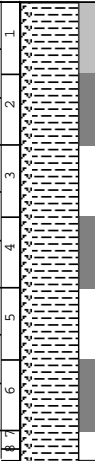
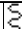
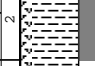


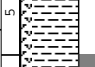
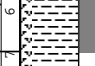
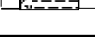
1080A-6H (Continued.)

| 1080A-7X 50.8-52.1 mbsf | | | | | | | | | |
|---|---------|---------------|----------|-----------------------|--------|---------|----------|--------|-------------|
| Leg 175 Site 1080 Hole A Core 7X | | | | | | | | | |
| METERS | SECTION | GRAPHIC LITH. | BIOTURB. | STRUCTURE ACCESSORIES | ICHNO. | FOSSILS | DISTURB. | SAMPLE | DESCRIPTION |
| <div><div></div><div></div><div></div><div></div><div></div><div></div><div></div><div></div><div></div><div></div></div> <div>DOLOMITE HORIZON</div> <div>The core is composed of gray (5Y 5/1; 5Y 6/1) DOLOMITE HORIZON with faint laminae and burrows.</div> | | | | | | | | | |



| 1080B-1H 0.0-9.2 mbsf | | | | | | | | | | |
|----------------------------------|---------|---------------|----------|-----------|-------------|--------|---------|----------|--------|---|
| Leg 175 Site 1080 Hole B Core 1H | | | | | | | | | | |
| METERS | SECTION | GRAPHIC LITH. | BIOTURB. | STRUCTURE | ACCESSORIES | ICHNO. | FOSSILS | DISTURB. | SAMPLE | DESCRIPTION |
| 1 | | | | | | | | ooo | SS | DIATOM-RICH SILTY CLAY The core contains an olive gray (5Y 4/2) and dark greenish gray (5G 4/1) DIATOM-RICH SILTY CLAY. There are whitish nodules disseminated throughout. |
| 2 | | | | | | | | | | |
| 3 | | | | | | | | | | |
| 4 | | | | | | | | | | |
| 5 | | | | | | | | | | |
| 6 | | | | | | | | | | |
| 7 | | | | | | | | | | |
| 8 | | | | | | | | | SS | |
| 9 | | | | | | | | | PAL | |



| 1080B-2H 9.2-18.7 mbsf | | | | | | | | | | |
|----------------------------------|---------|---|----------|-----------|-------------|--------|---------|---|--------|---|
| Leg 175 Site 1080 Hole B Core 2H | | | | | | | | | | |
| METERS | SECTION | GRAPHIC LITH. | BIOTURB. | STRUCTURE | ACCESSORIES | ICHNO. | FOSSILS | DISTURB. | SAMPLE | DESCRIPTION |
| 1 | |  | | | | | |  | | <p>DIATOM-RICH SILTY CLAY</p> <p>The core consists of olive gray (5Y 4/2) and dark greenish gray (5G 4/1) DIATOM-RICH SILTY CLAY. In Section 3, 50 cm, and Section 6, 60 cm, there is a distinct change in color from dark greenish gray (5G 4/1) to olive gray (5Y 4/2) and dark greenish gray (5G 4/1) to olive gray (5Y 4/2). Most of the sections show slight to moderate mottling. Small white nodules occur disseminated throughout the core.</p> |
| 2 | |  | | | | | | | | |
| 3 | |  | | | | | | | SS | |
| 4 | |  | | | | | | | SS | |
| 5 | |  | | | | | | | | |
| 6 | |  | | | | | | | | |
| 7 | |  | | | | | | | SS | |
| 8 | | | | | | | | | PAL | |

1080B-2H

