

57° 15'E

Bathymetry of Atlantis Bank Atlantis II Fracture Zone: Southwest Indi

Henry J.B. Dick¹, Christopher J. MacLeod², Paul T. Robinson³, Sir
and

Maurice A. Tivey¹

¹Woods Hole Oceanographic Institution

²Cardiff University

³Dalhousie University

⁴University of Edinburgh

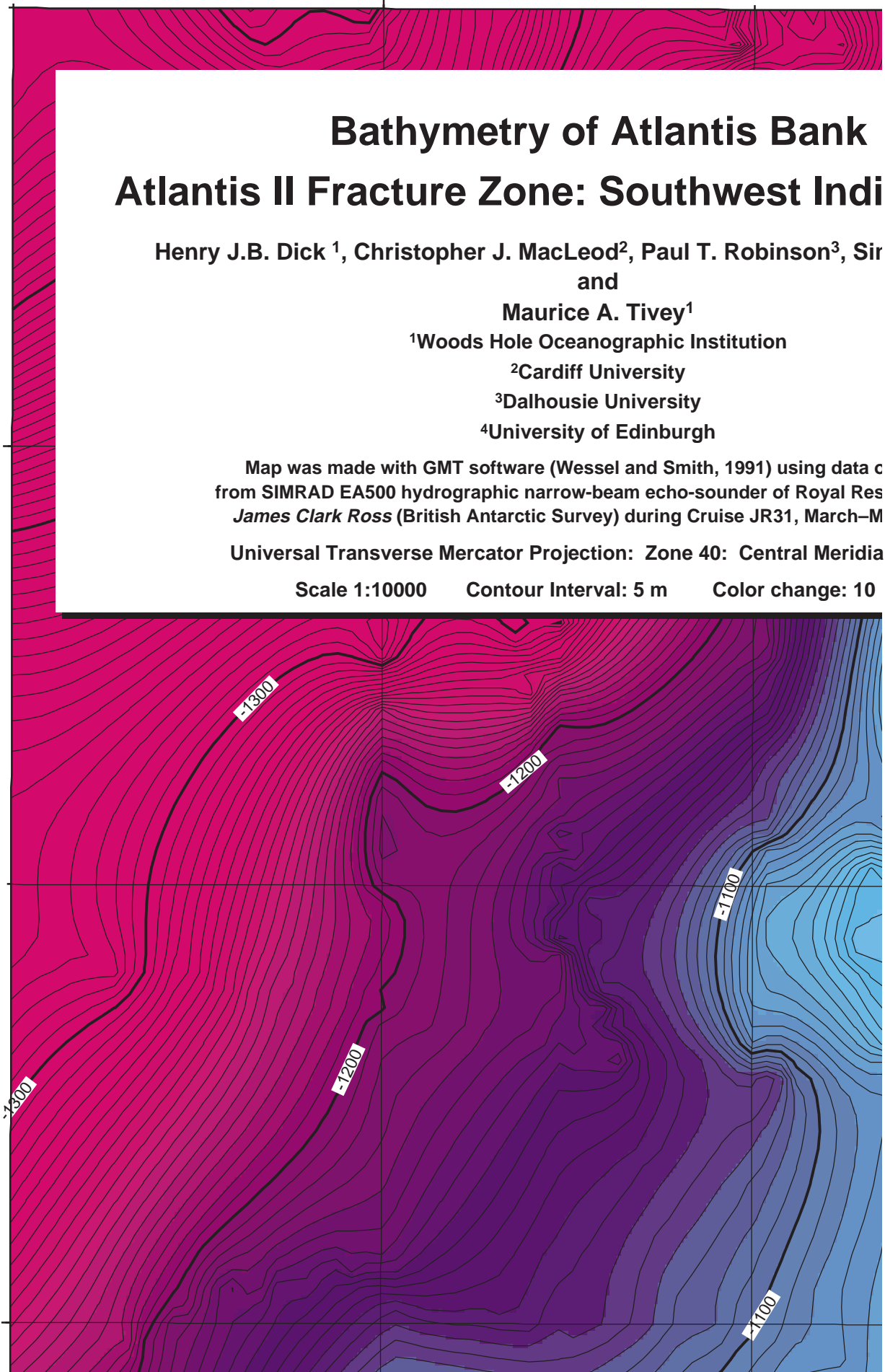
Map was made with GMT software (Wessel and Smith, 1991) using data c
from SIMRAD EA500 hydrographic narrow-beam echo-sounder of Royal Res
James Clark Ross (British Antarctic Survey) during Cruise JR31, March–M

Universal Transverse Mercator Projection: Zone 40: Central Meridia

Scale 1:10000 Contour Interval: 5 m Color change: 10

32° 40'S

32° 41'S



57° 16'E

57° 17'E

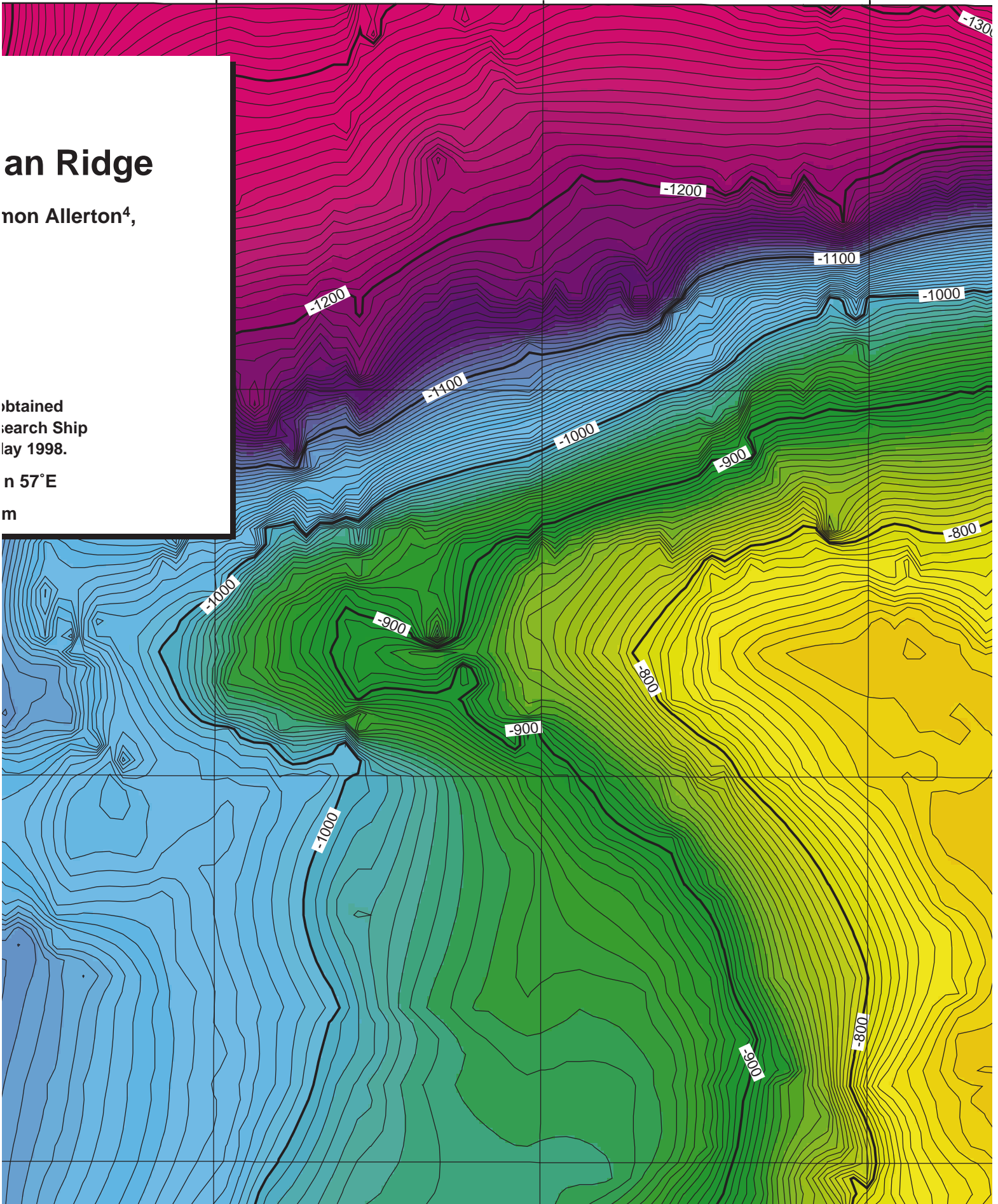
an Ridge

non Allerton⁴,

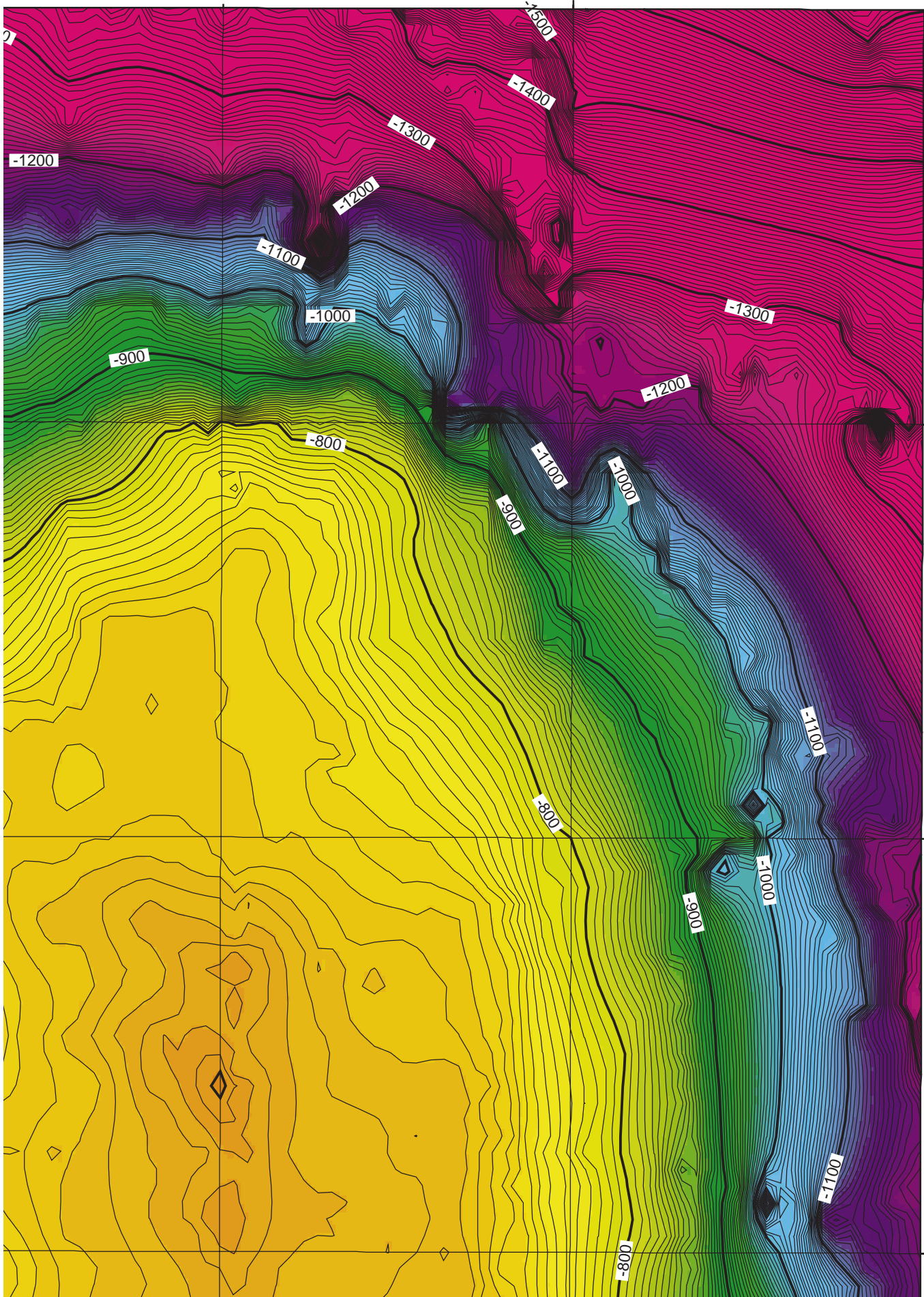
obtained
Research Ship
May 1998.

n 57°E

m



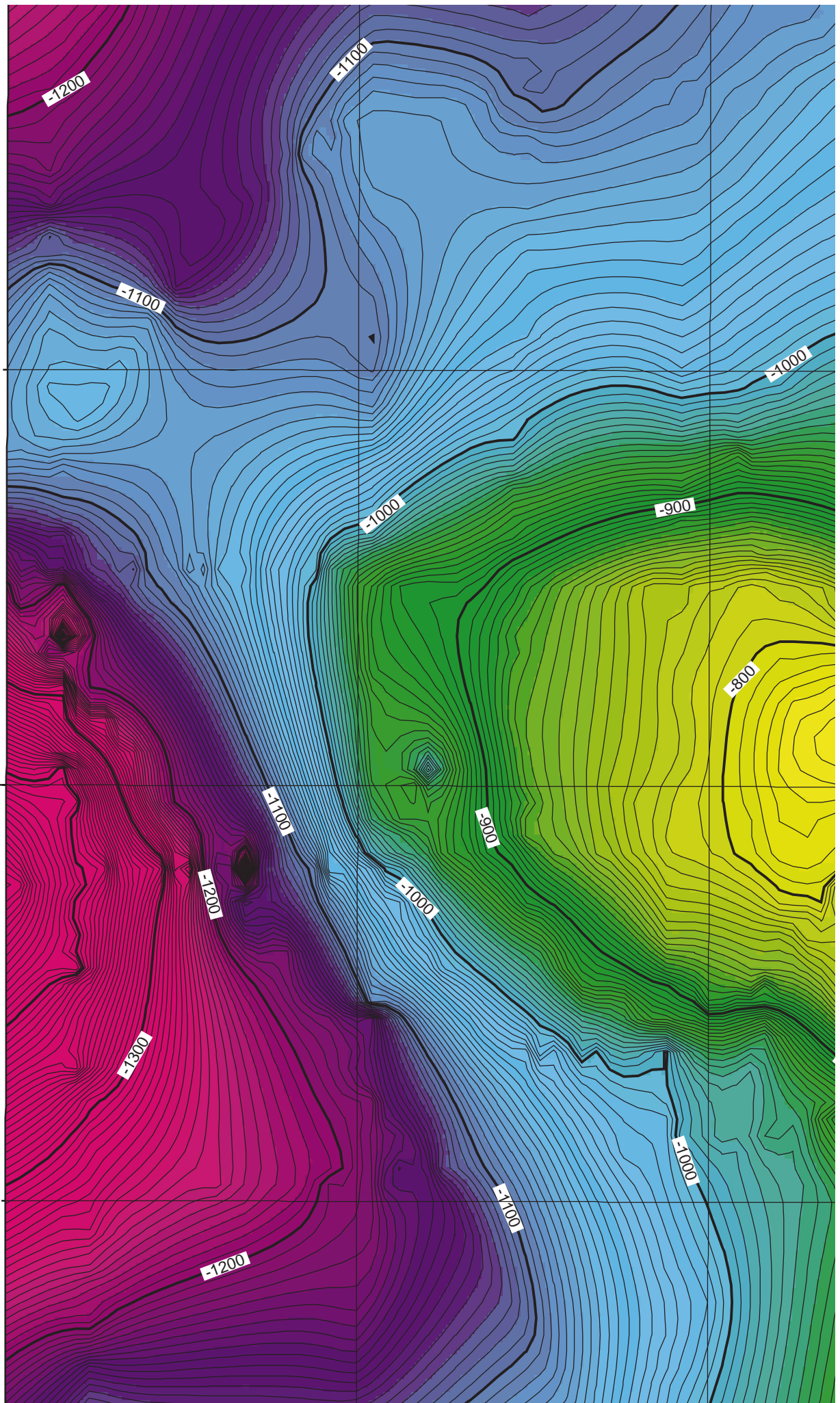
57° 18'E

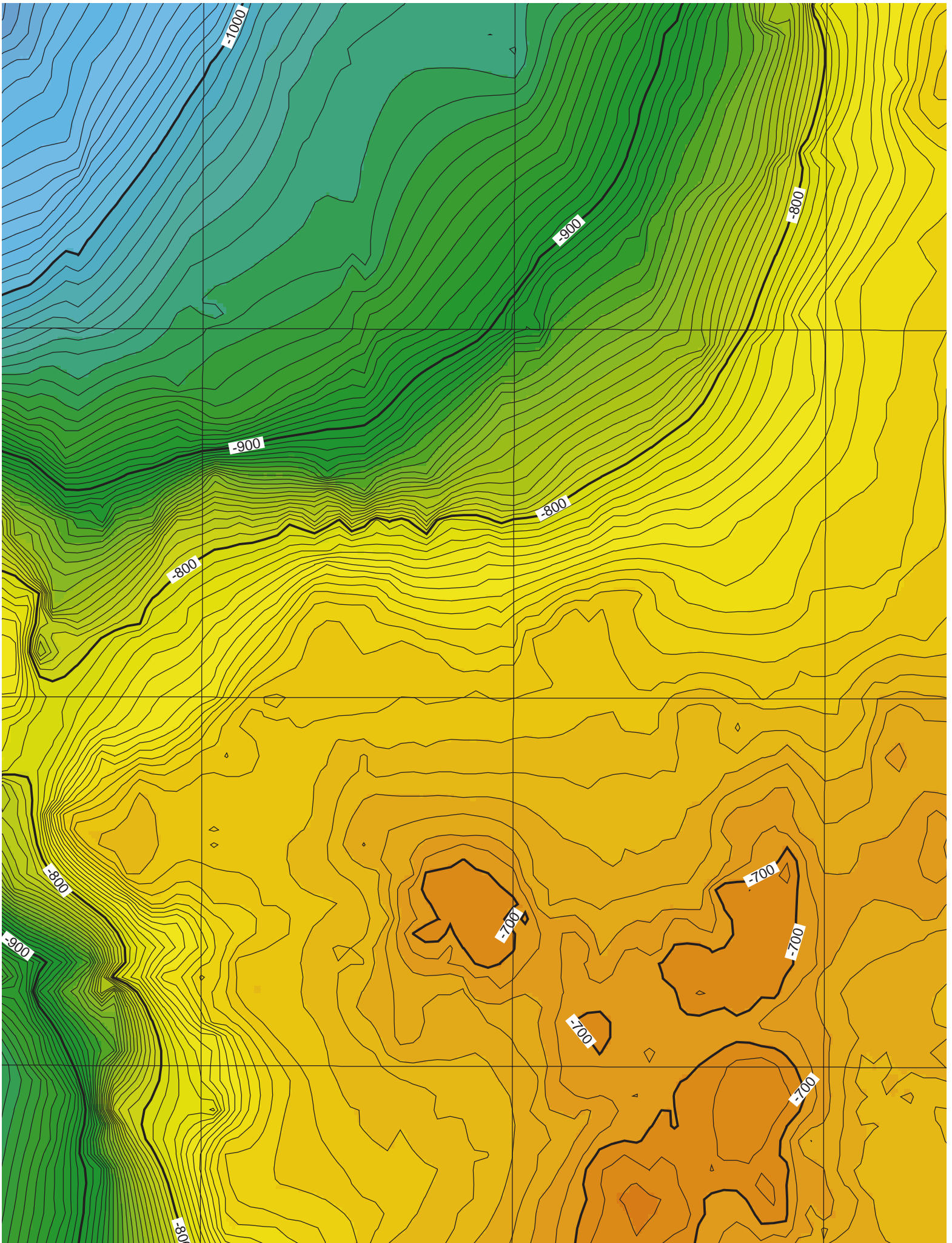


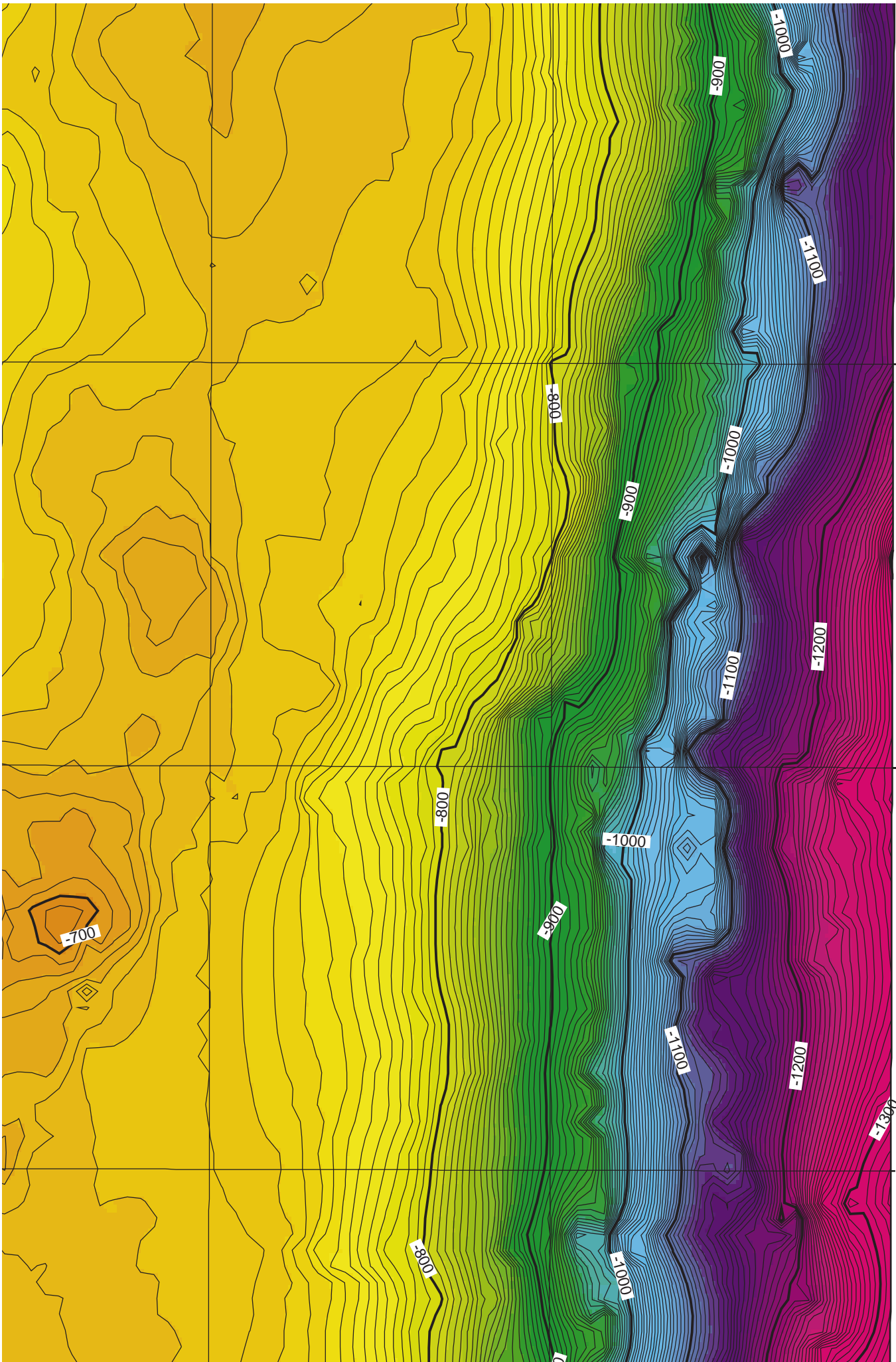
32° 40'S

32° 41'S

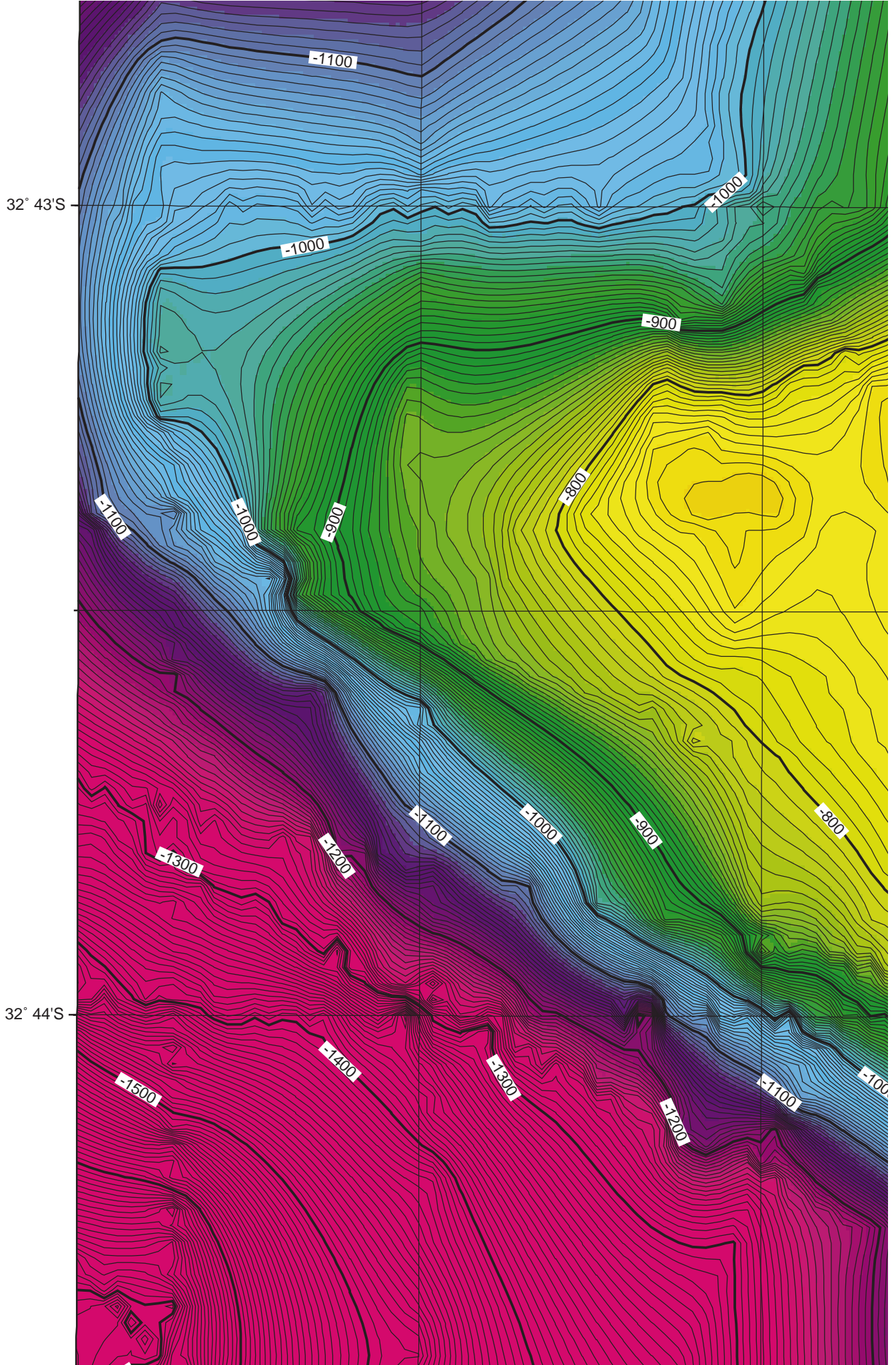
32° 42'S

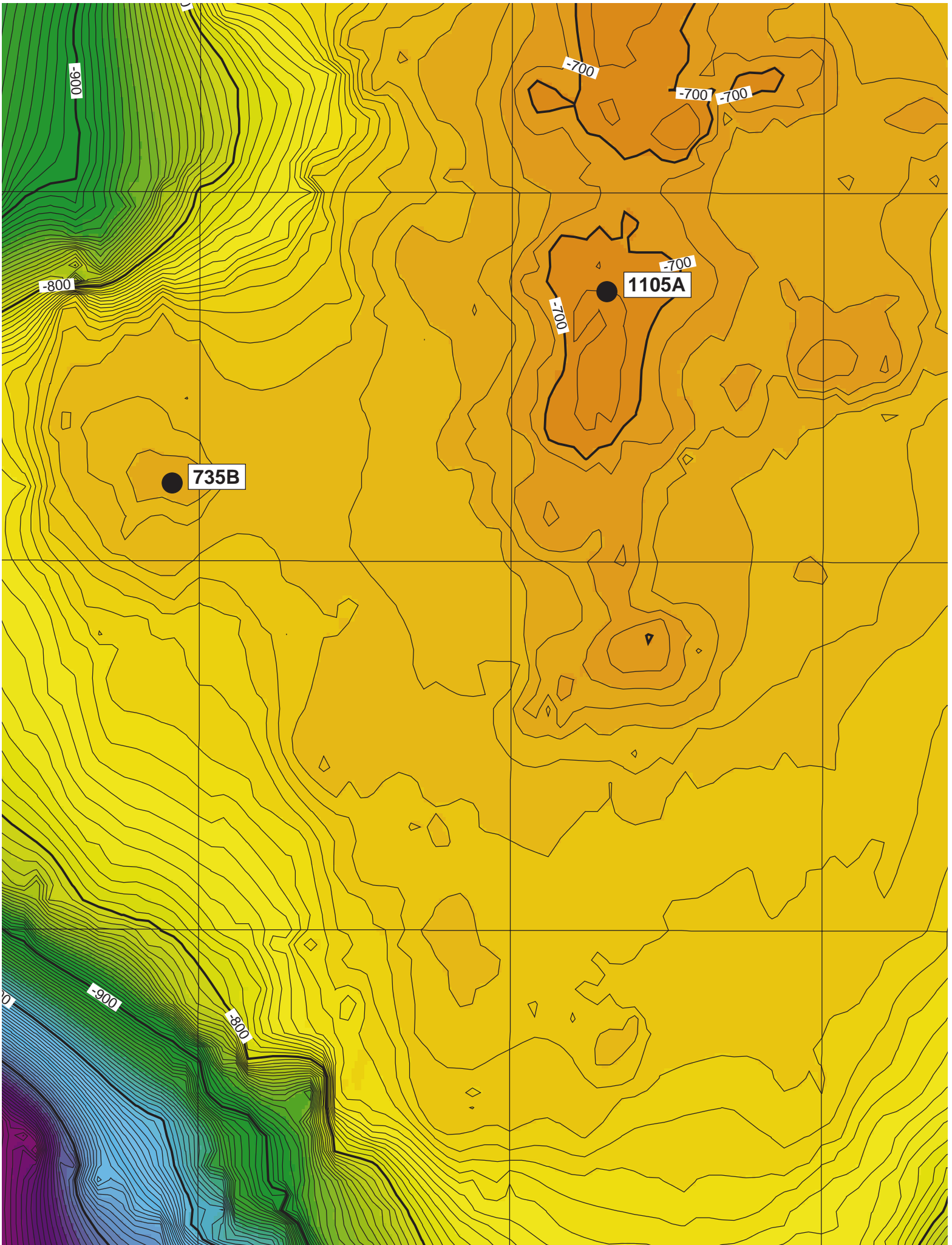


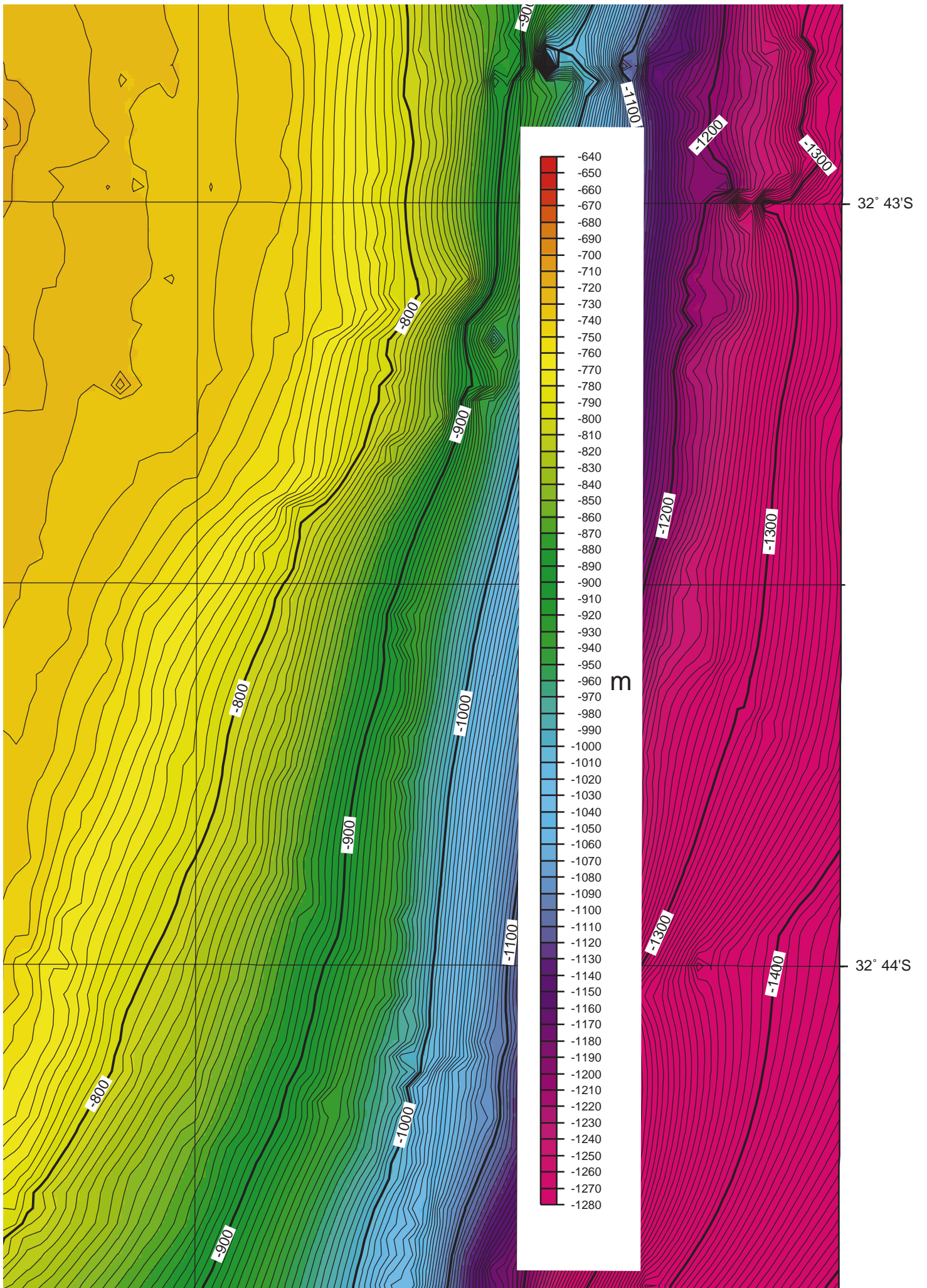




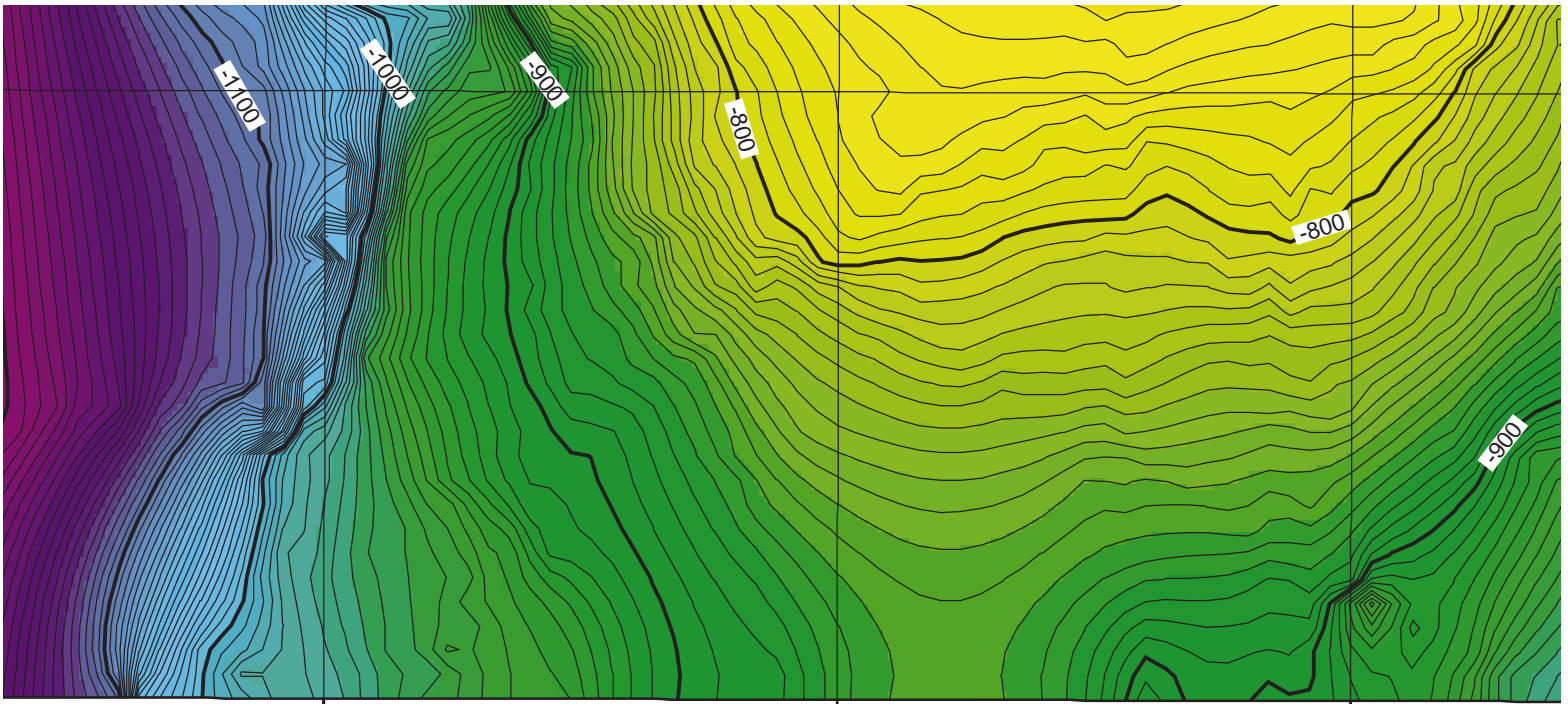
32° 42'S





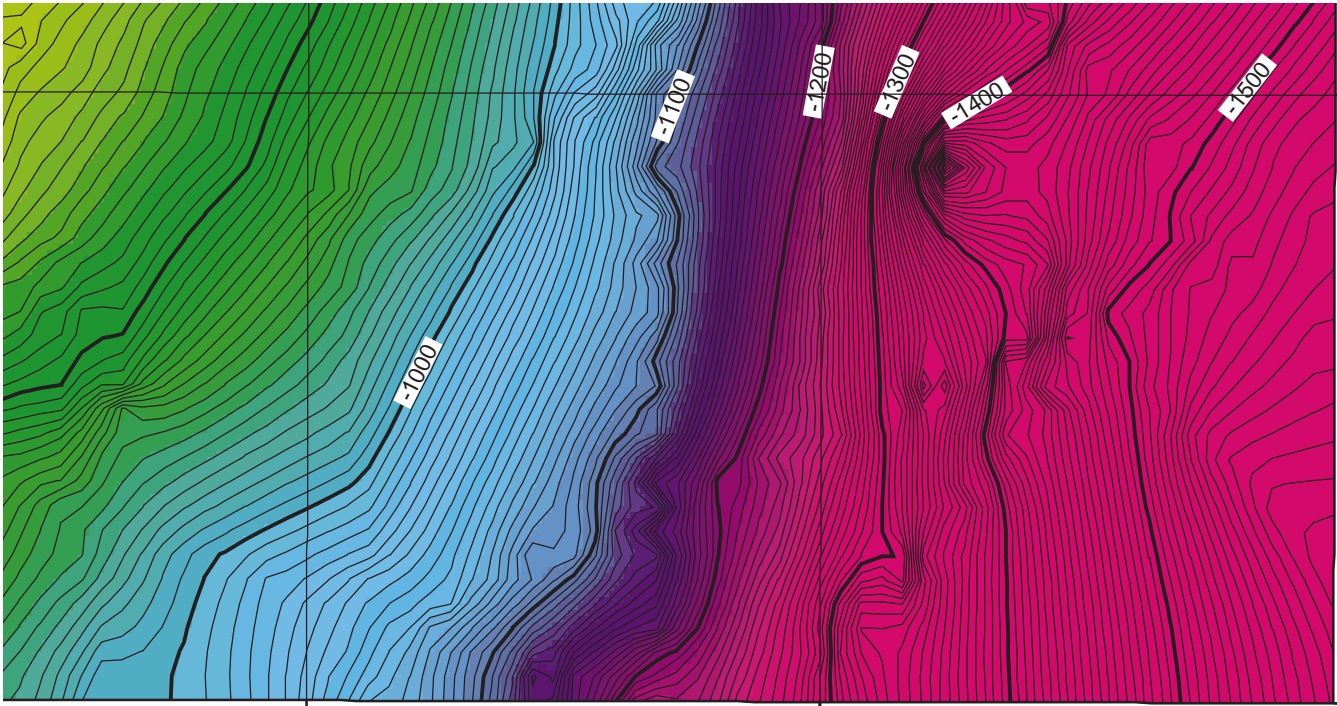






57° 16'E

57° 17'E



57° 18'E

32° 45'S