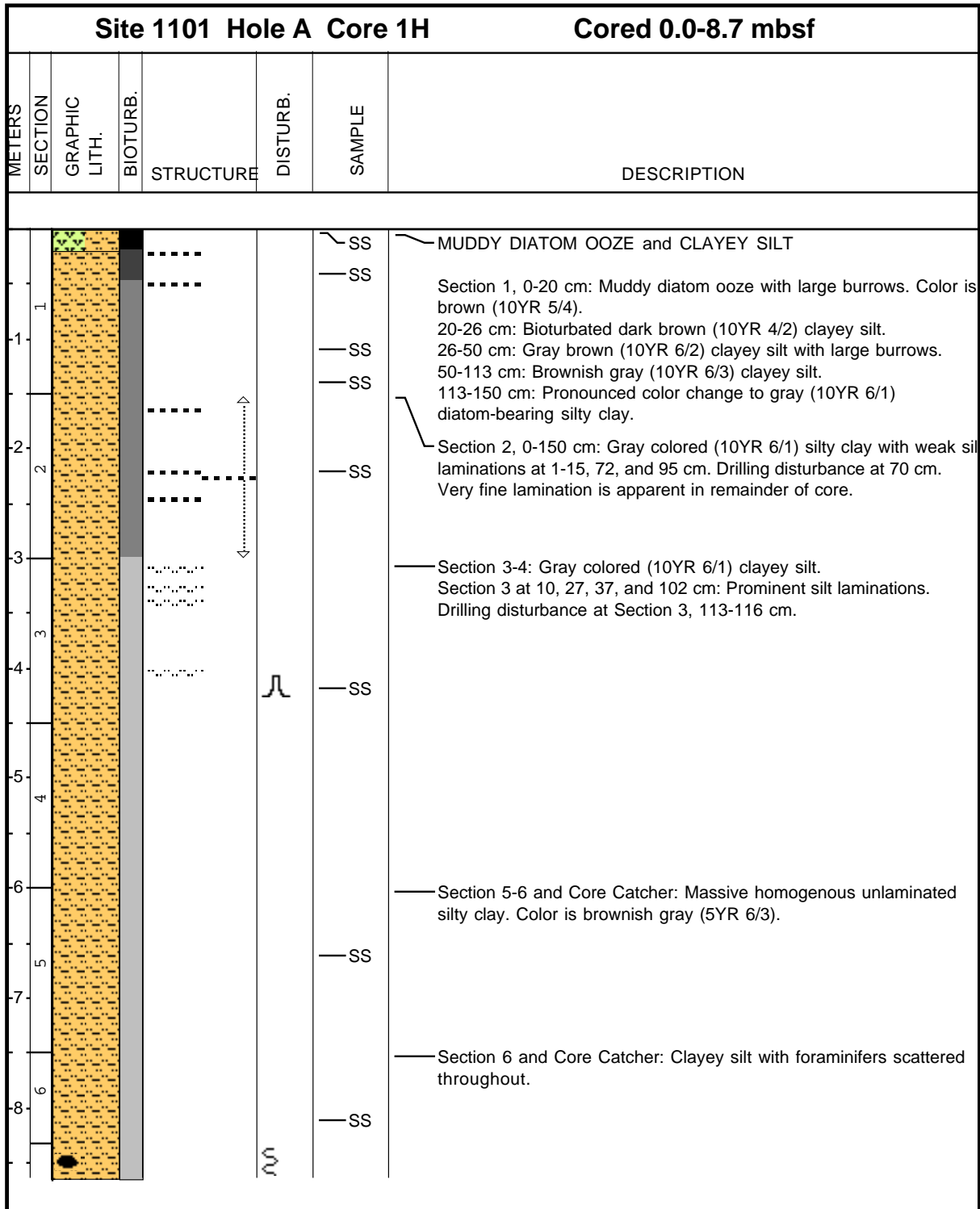
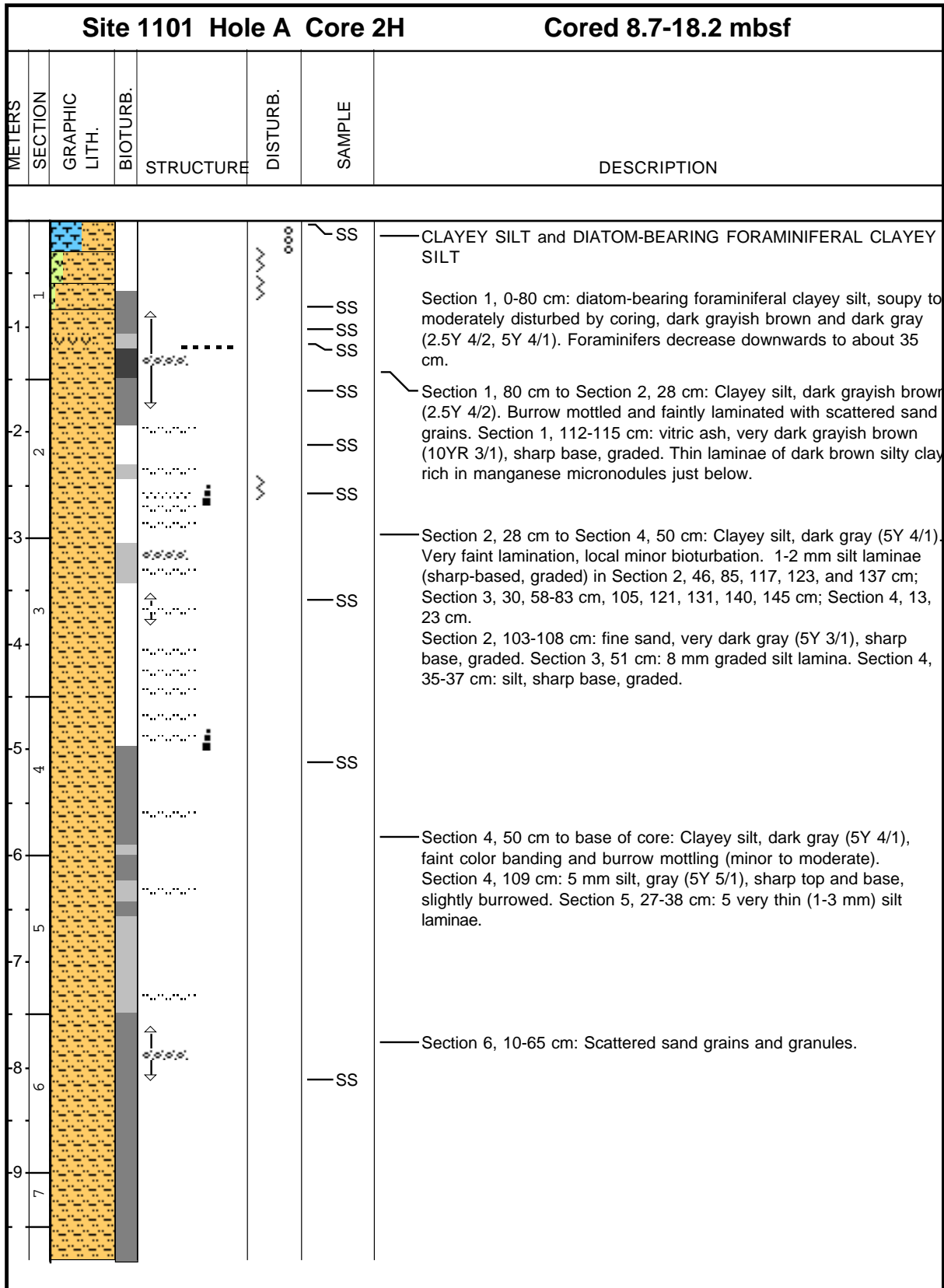


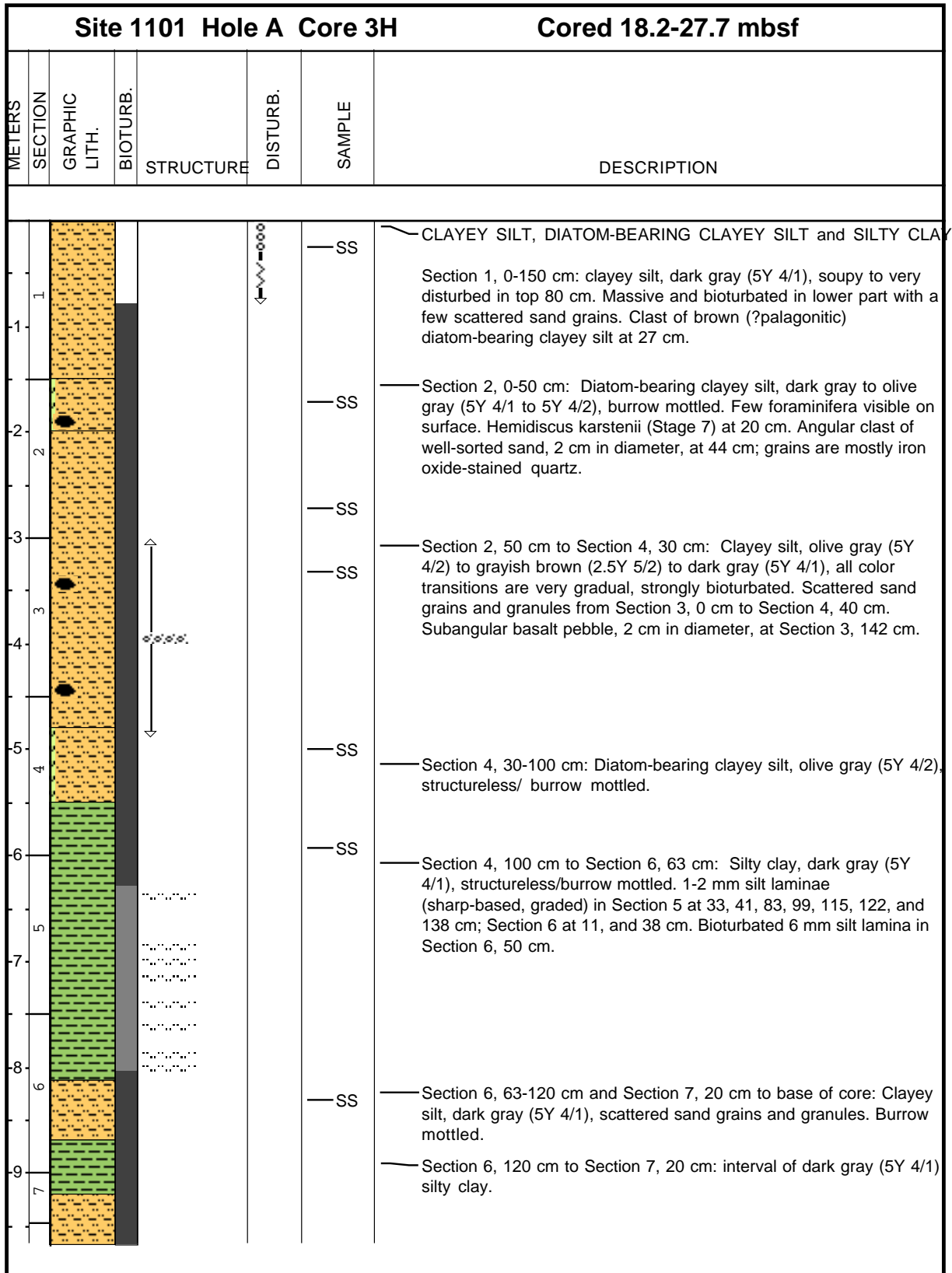
Core Image



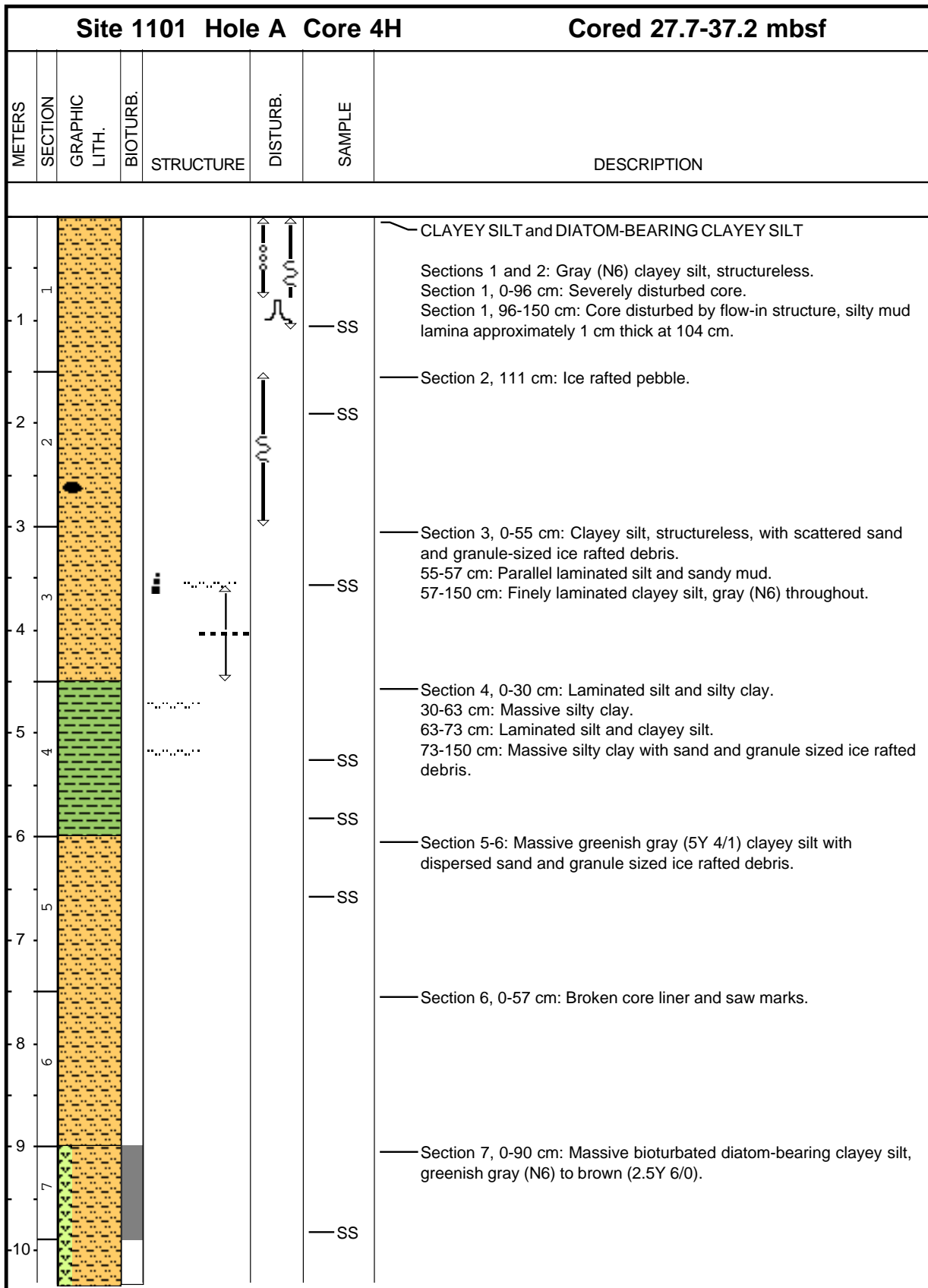
Core Image



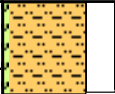
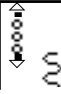
Core Image



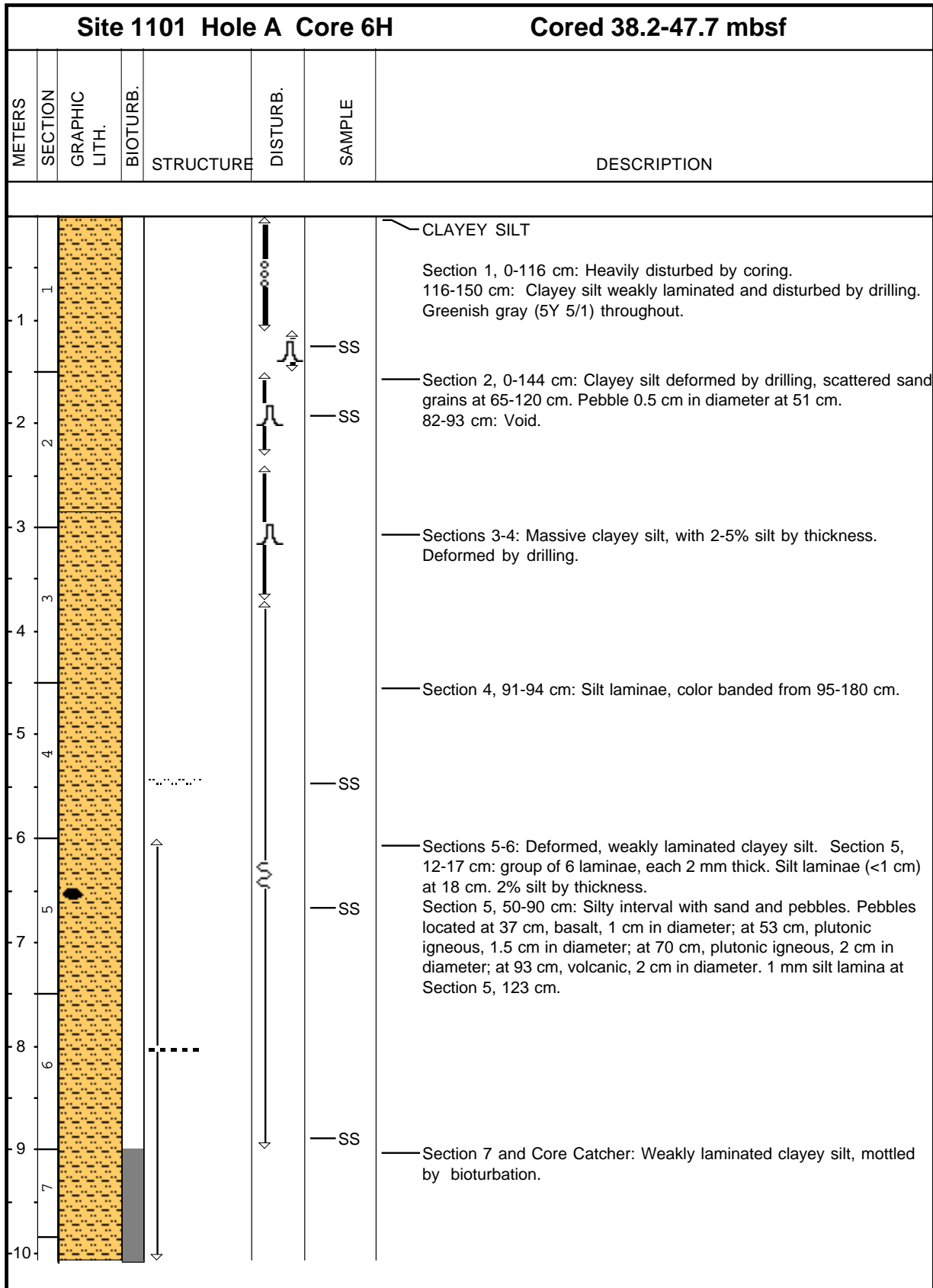
Core Image



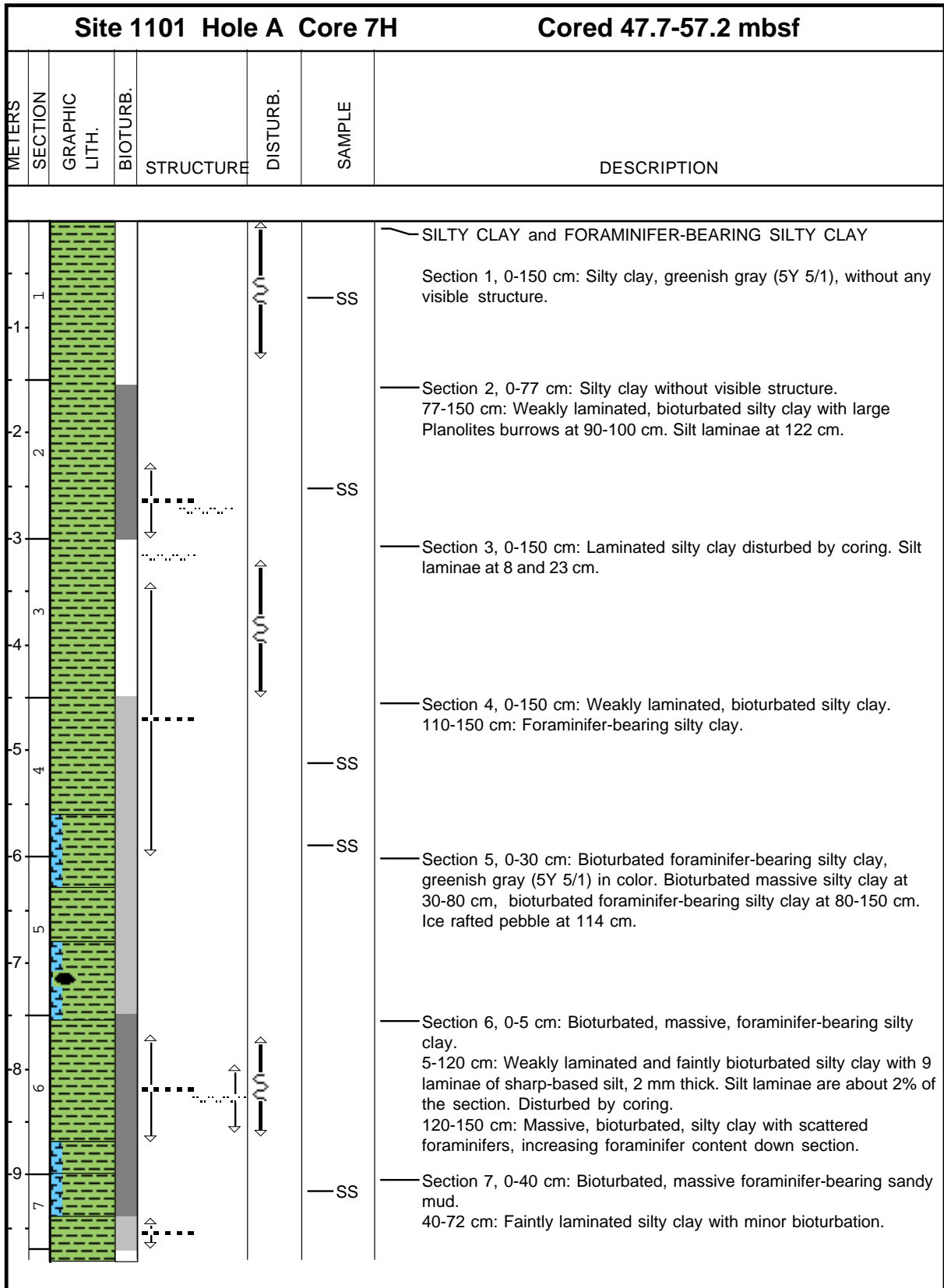
Core Image

Site 1101 Hole A Core 5H				Cored 37.2-38.2 mbsf			
METERS	SECTION	GRAPHIC LITH.	BIOTURB.	STRUCTURE	DISTURB.	SAMPLE	DESCRIPTION
1						SS SS	DIATOM-BEARING CLAYEY SILT 0-47 cm: Greenish gray (5Y 5/1) clayey silt, completely soupy due to drilling disturbance.

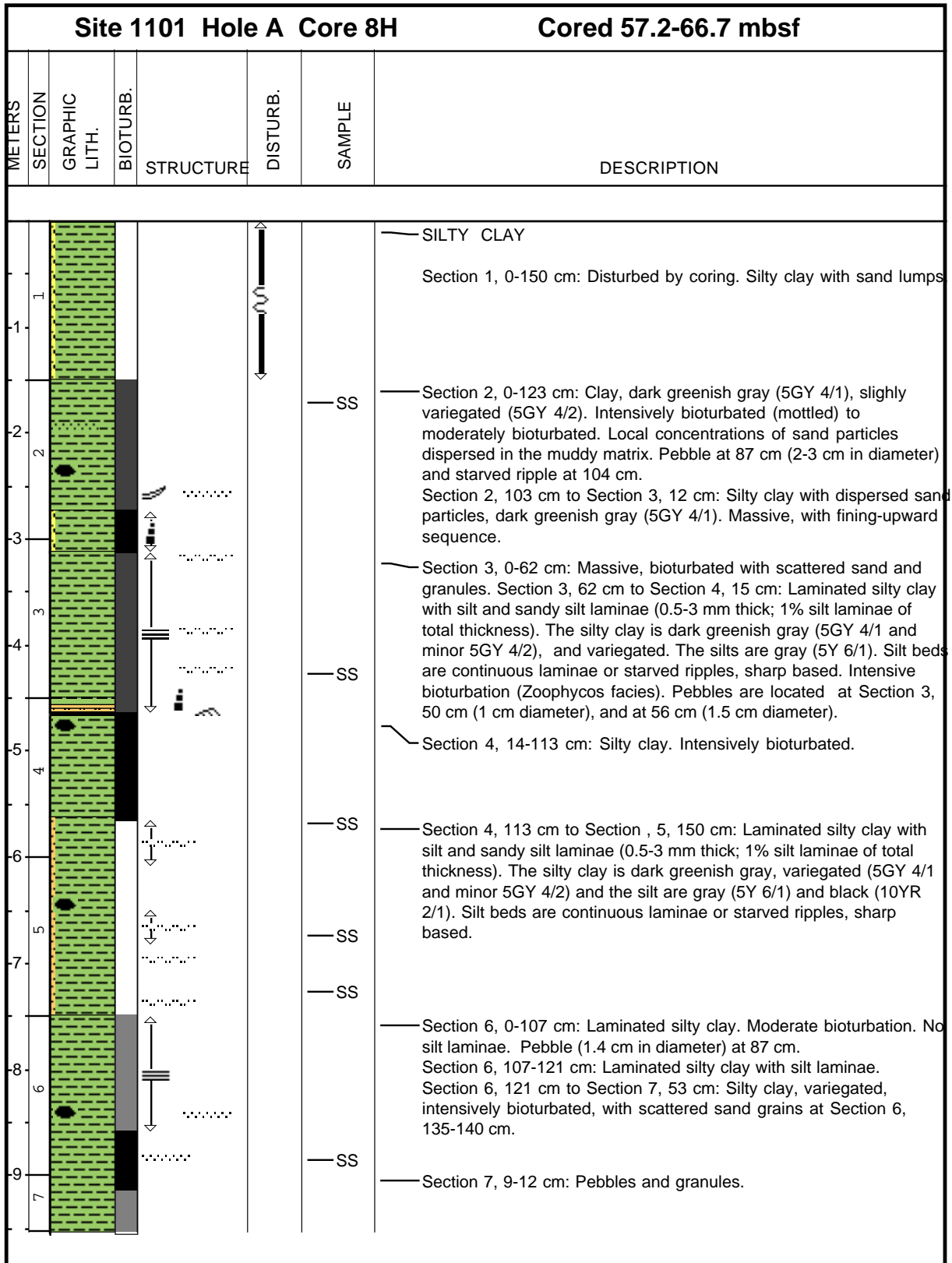
Core Image



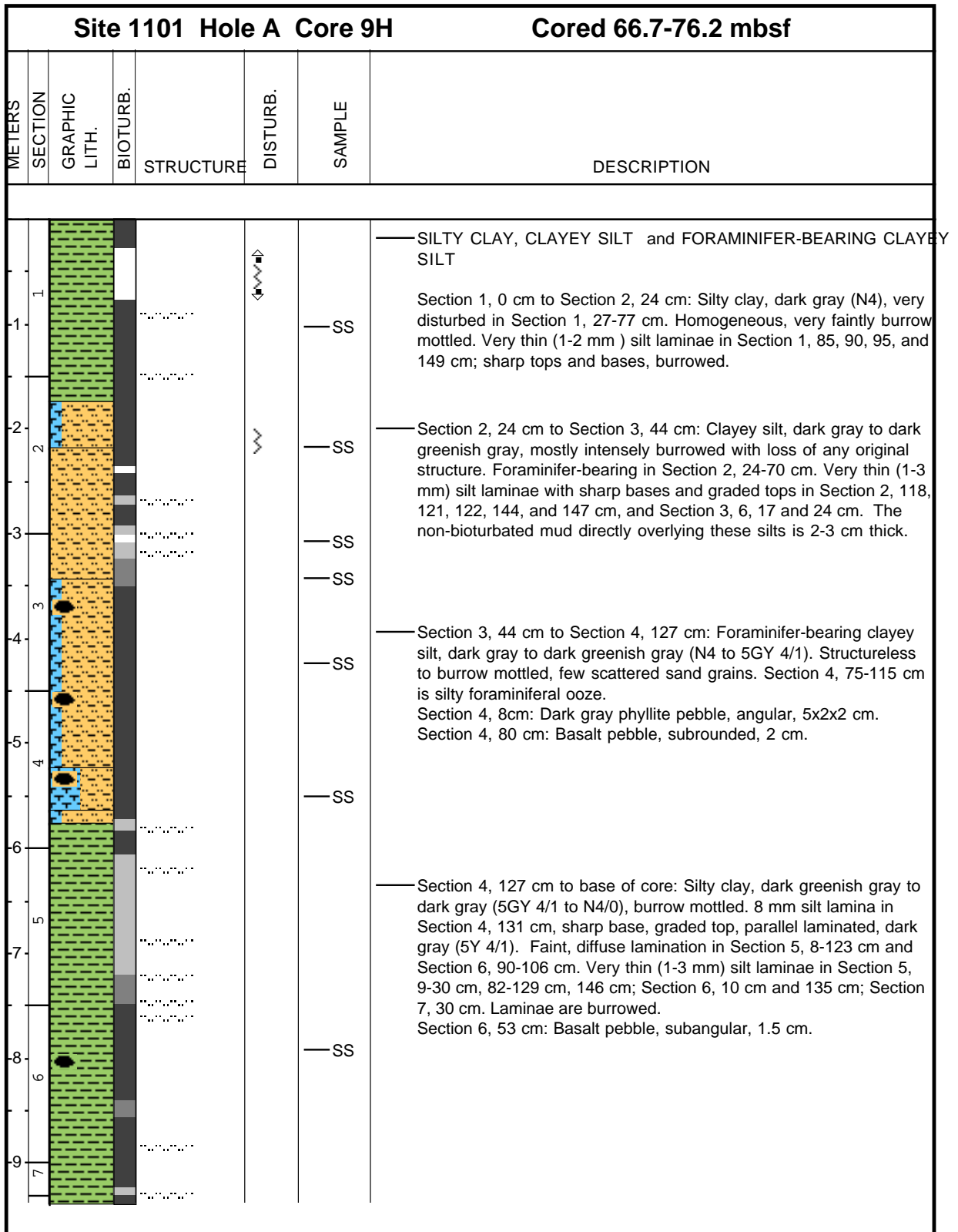
Core Image



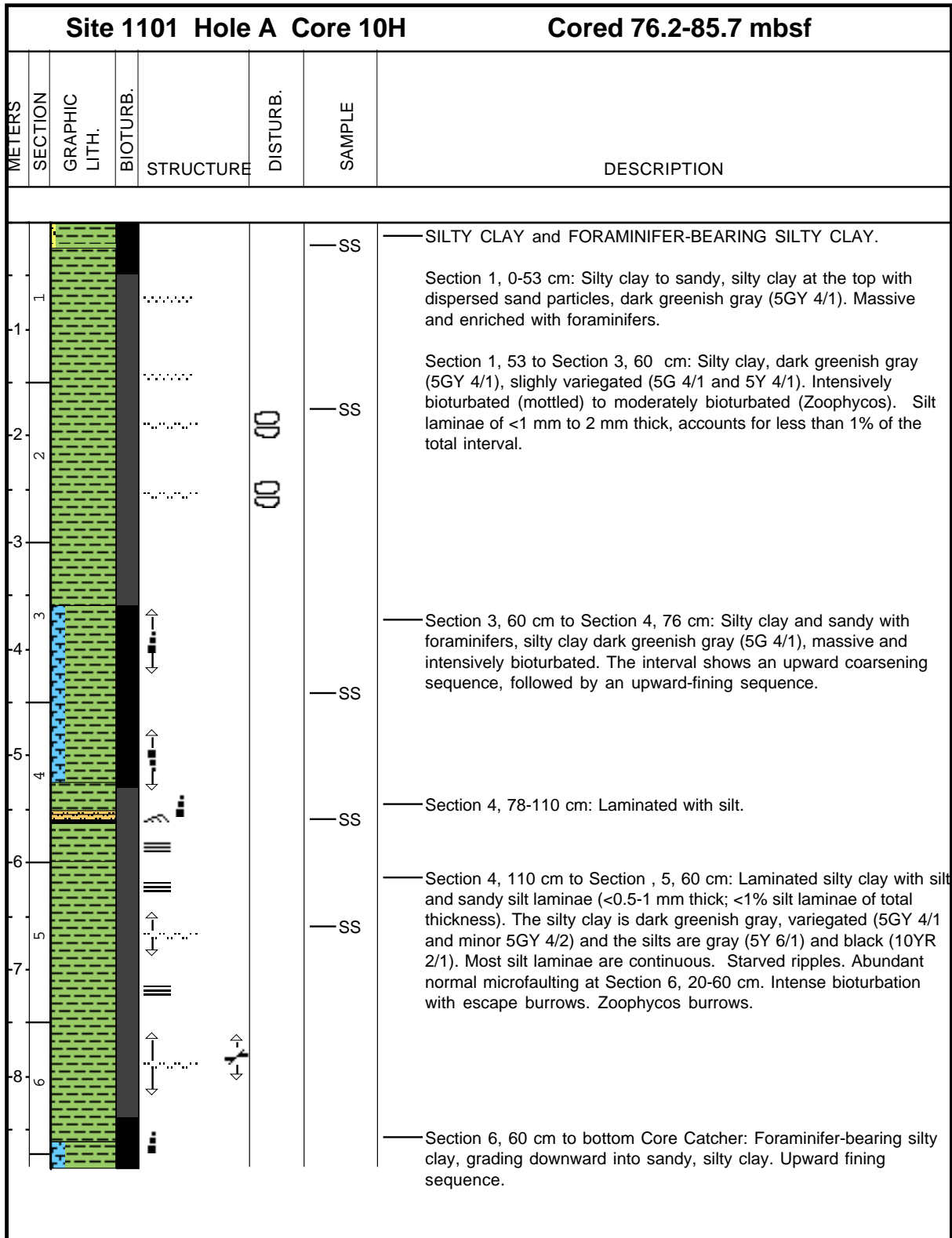
Core Image



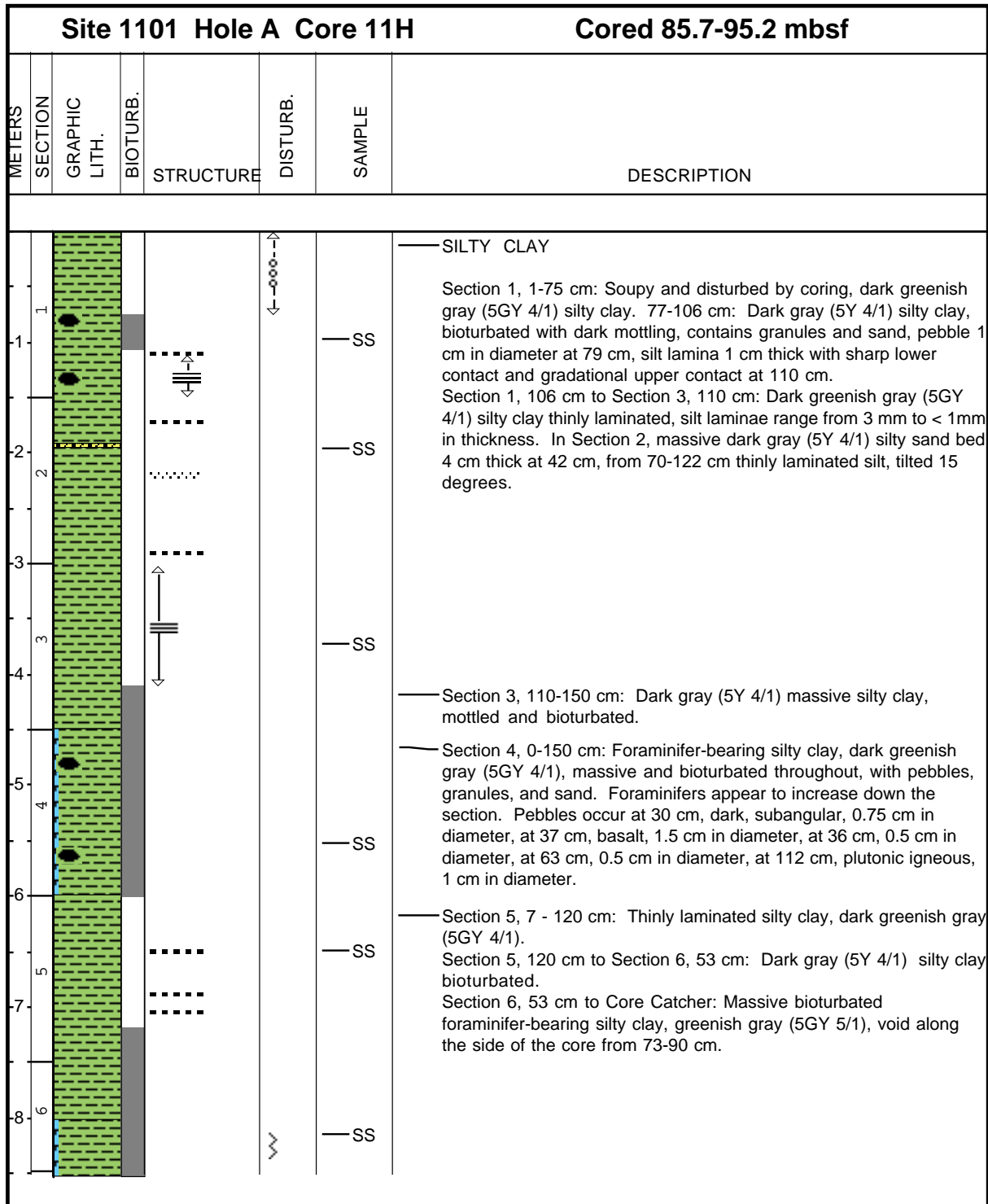
Core Image



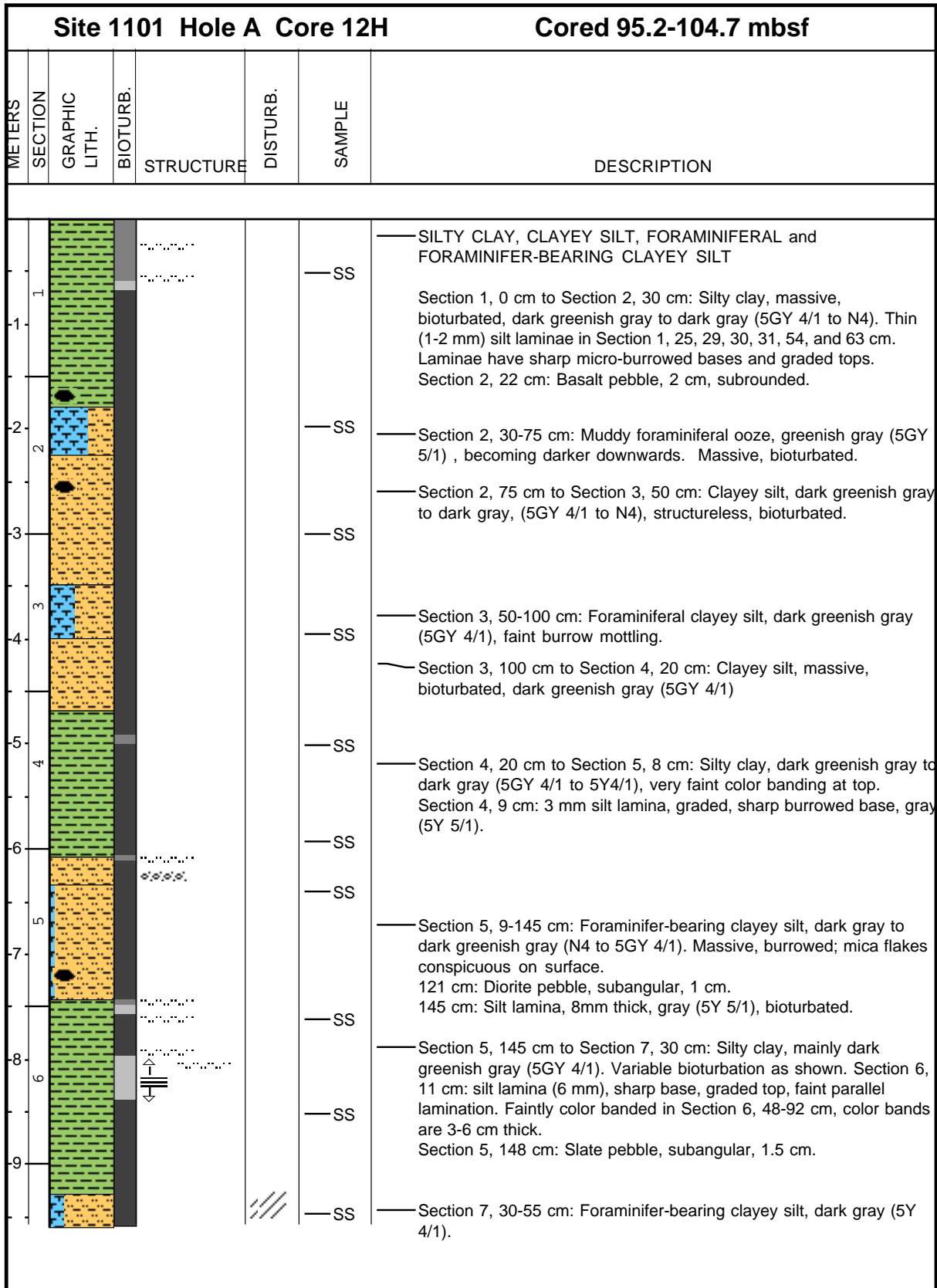
Core Image



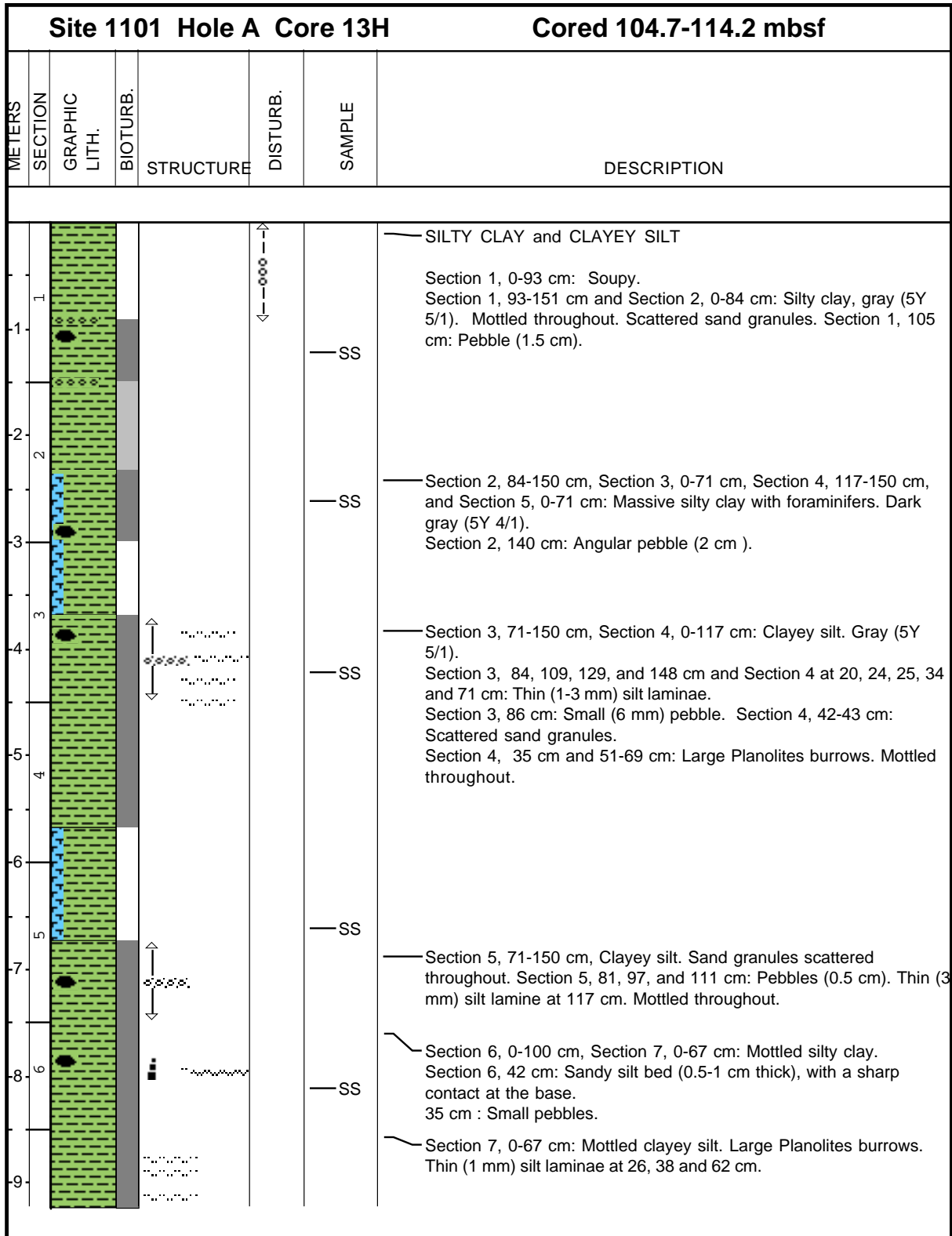
Core Image



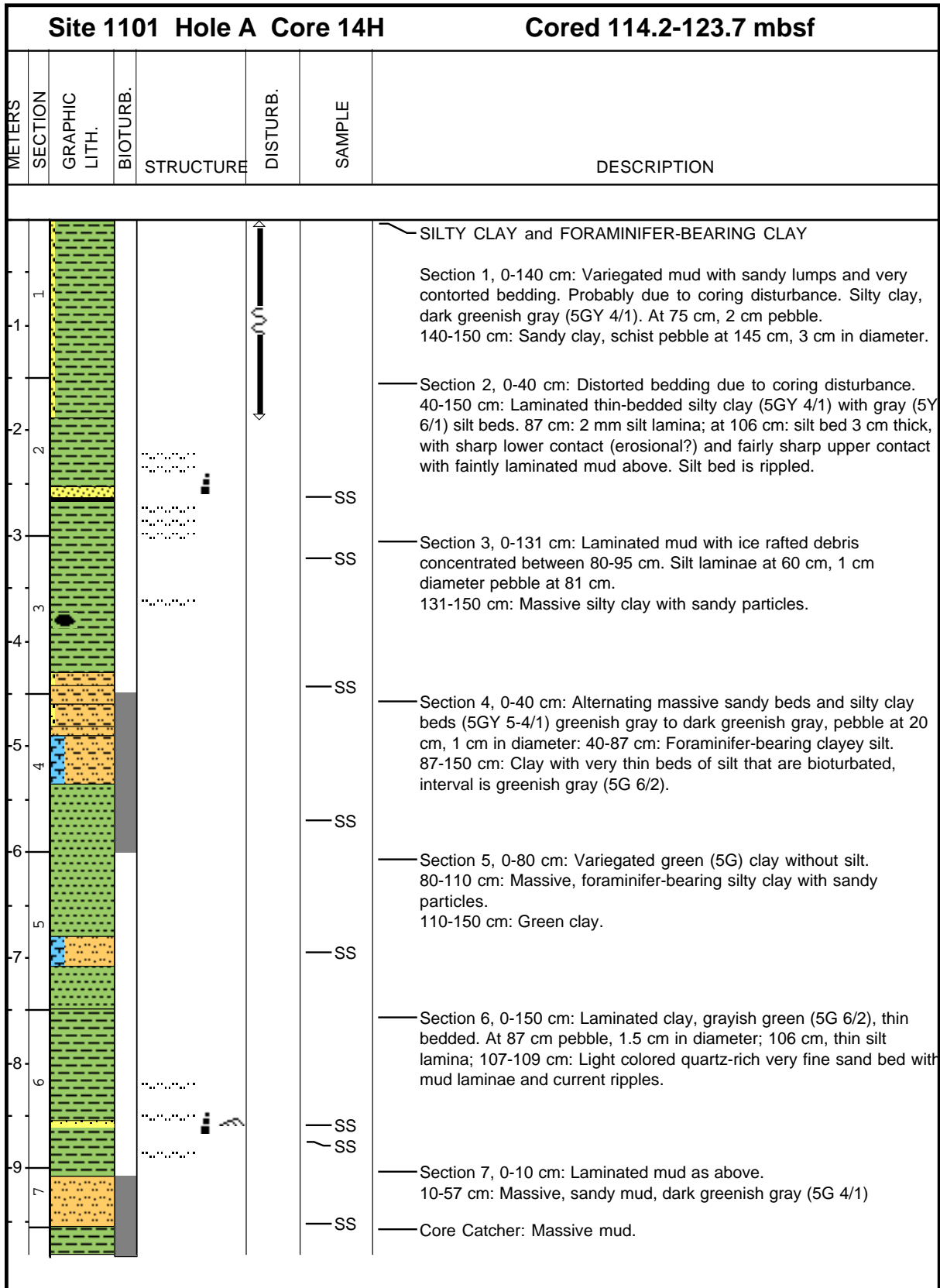
Core Image



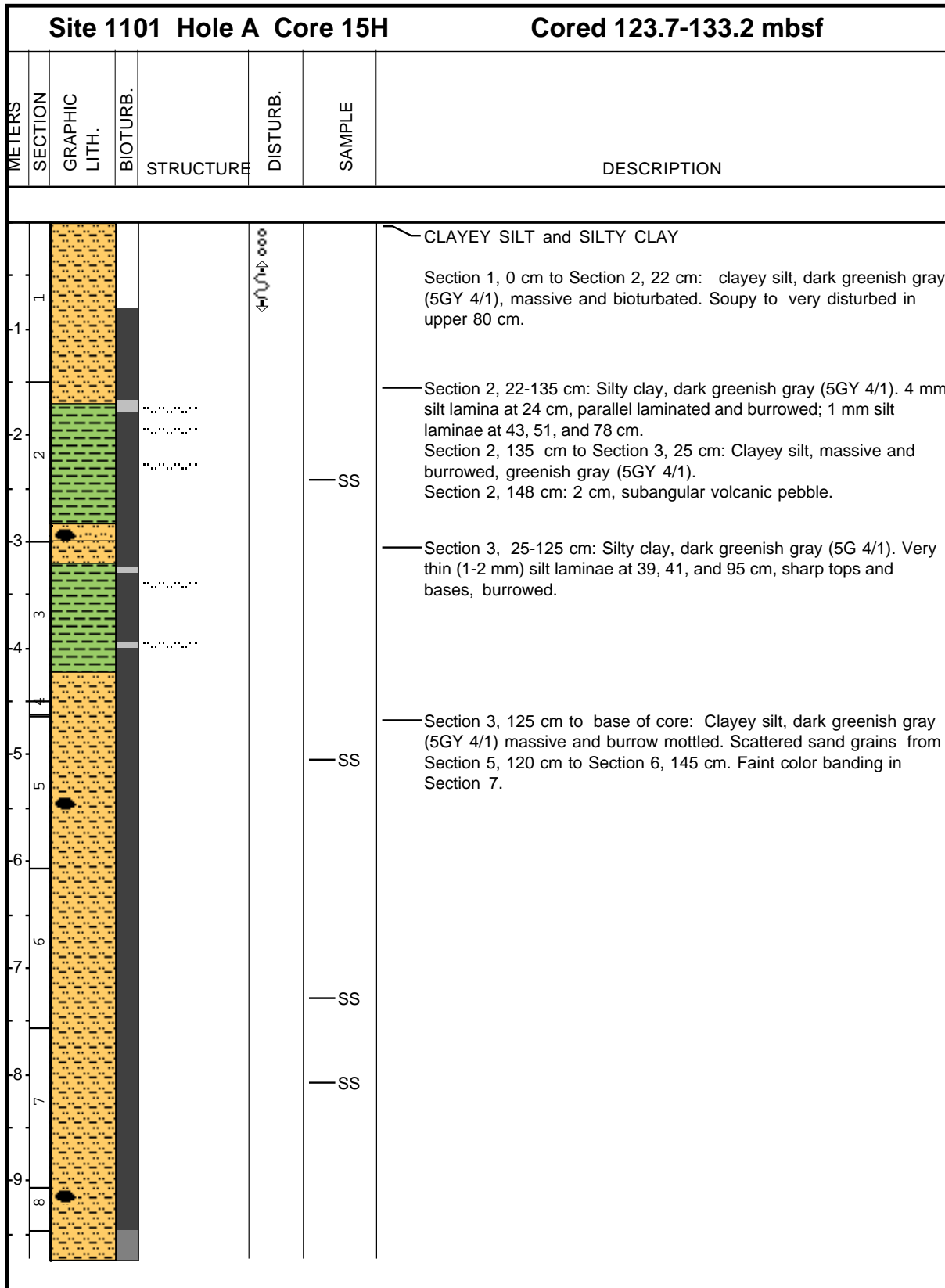
Core Image



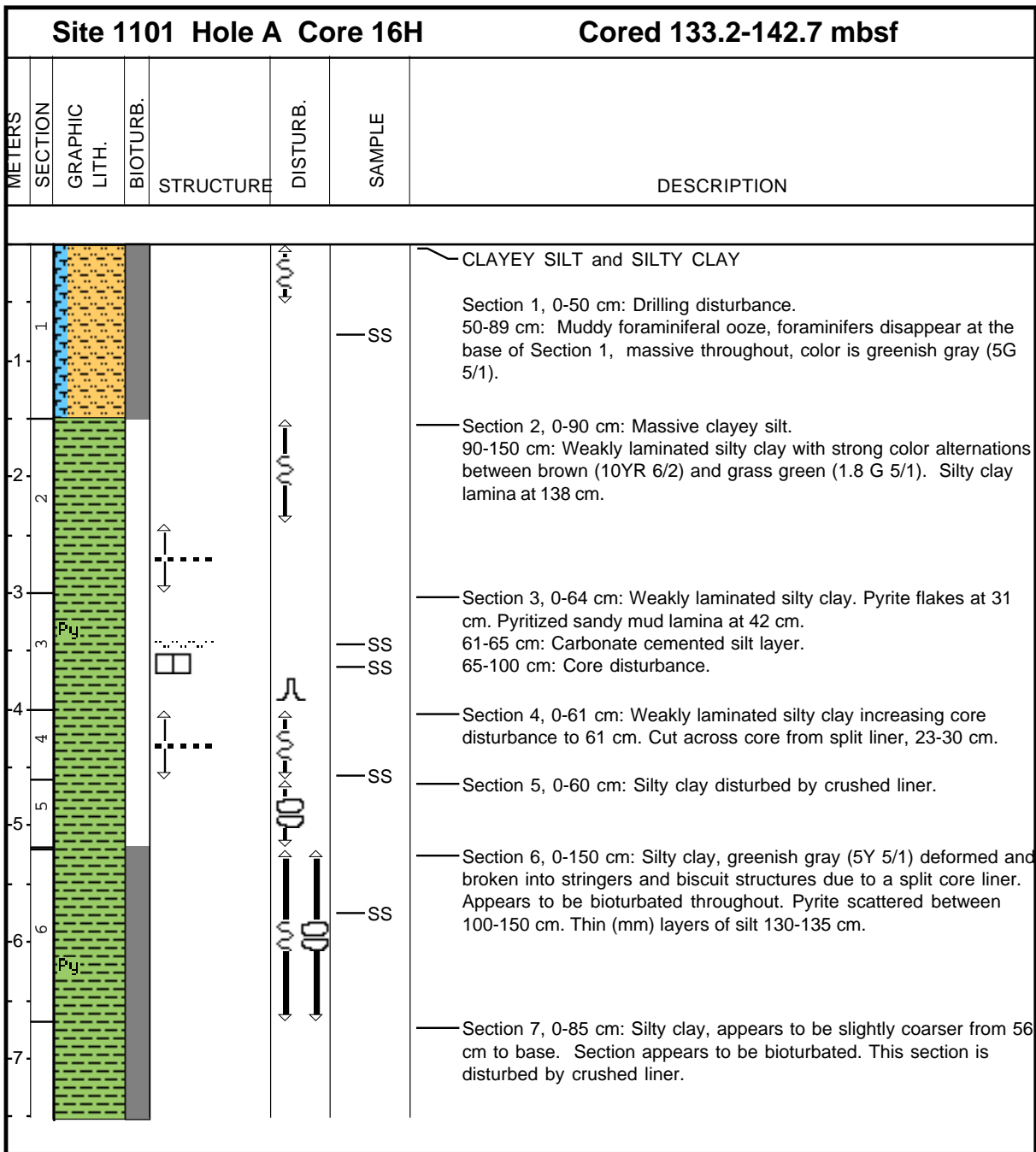
Core Image



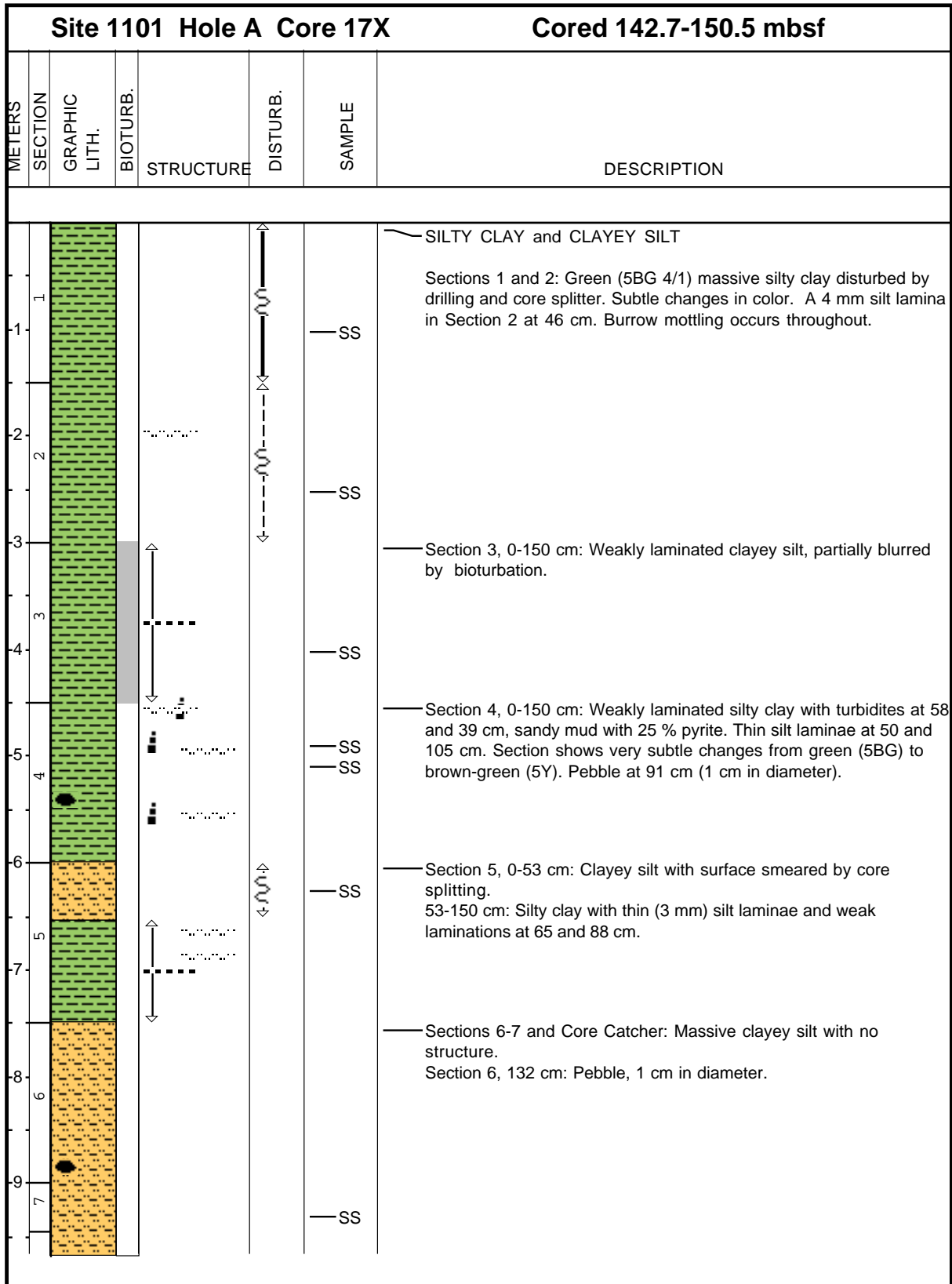
Core Image



Core Image



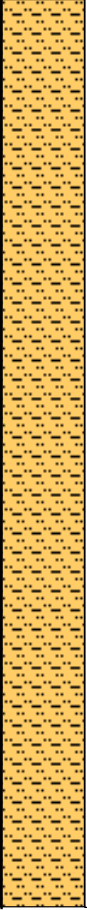





Core Image



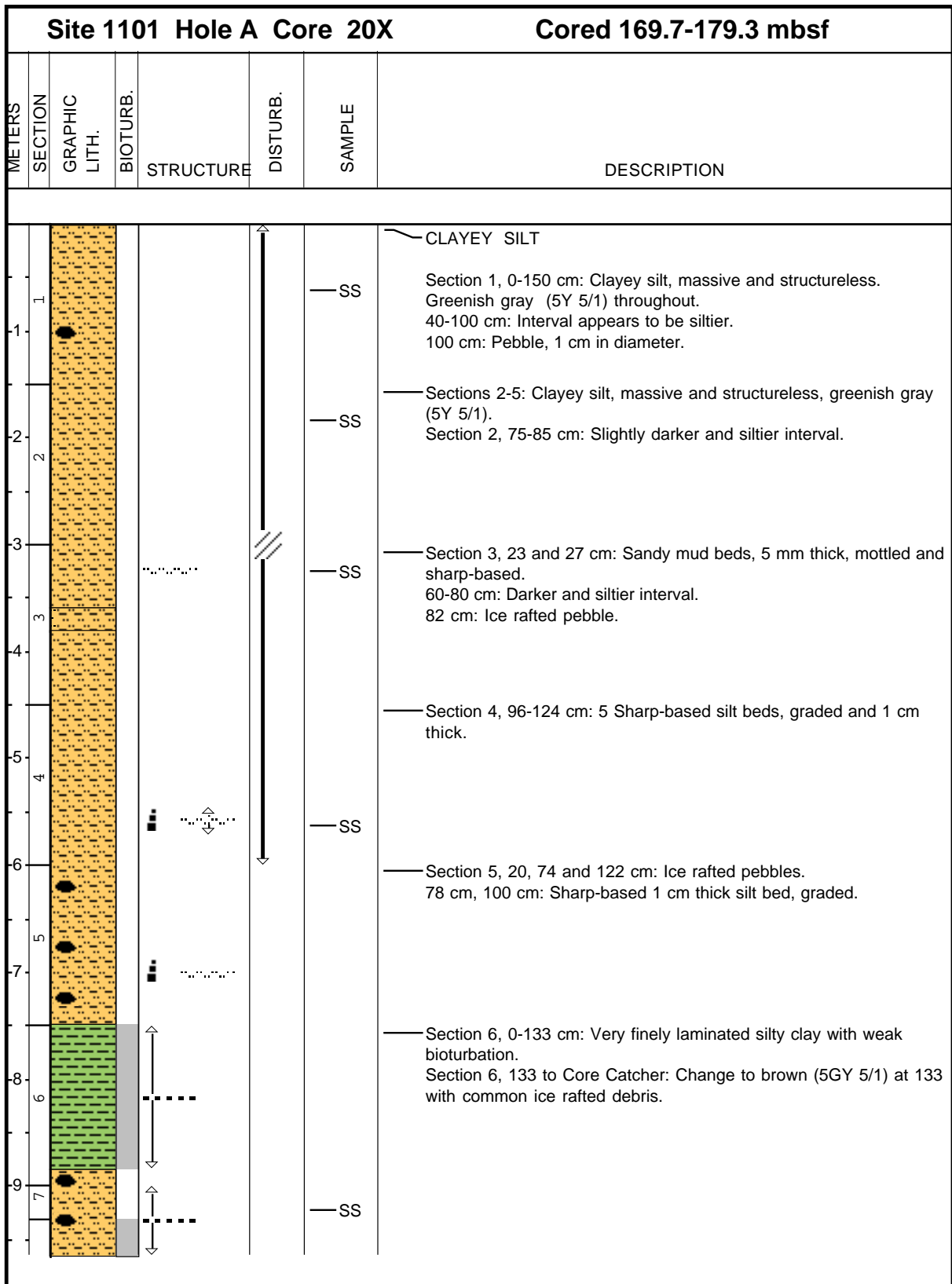
Core Image

Site 1101 Hole A Core 18X				Cored 150.5-160.1 mbsf				
METERS	SECTION	GRAPHIC LITH.	BIOTURB.	STRUCTURE	DISTURB.	SAMPLE	DESCRIPTION	
1	1					SS	CLAYEY SILT Section 1, 0-150 cm: Mottled bioturbated greenish gray (5GY 6/1) clayey silt, disturbed by drilling.	
2	2					SS	Section 2, 0-150 cm: Weakly laminated clayey silt with burrow mottling at 0-50, 75-97, and 134-150 cm; alternating with brown (structureless silty clay intervals at 50-75 and 97-134 cm). Color is predominantly dark greenish gray (5G 4/1).	
3	3					SS	Section 3, 0-97 cm: Disturbed by drilling. 97-145 cm: Clayey silt, structureless, mottled and bioturbated with a brown-colored interval at 110-117 cm. Color is predominantly dark greenish gray (5GY 5/1).	
4	4					SS	Section 4, 0-23 cm: Clayey silt, massive and structureless. 23-102 and 139-150 cm: Disturbed by drilling. 102-139 cm: Weakly laminated clayey silt.	
5	5						SS	Section 5, 0-150 cm: Massive silty clay; no structure or lamination. Brown (10 YR) interval at 26-31 cm. Silt lamina at 96 cm.
6	6						SS	Section 6, 0-150 cm: Massive clayey silt with brown (10 YR) intervals at 40-80 and 122-127 cm.
7	7						SS	Section 7 and Core catcher: Massive clayey silt without structure, greenish gray (5GY 5/1).

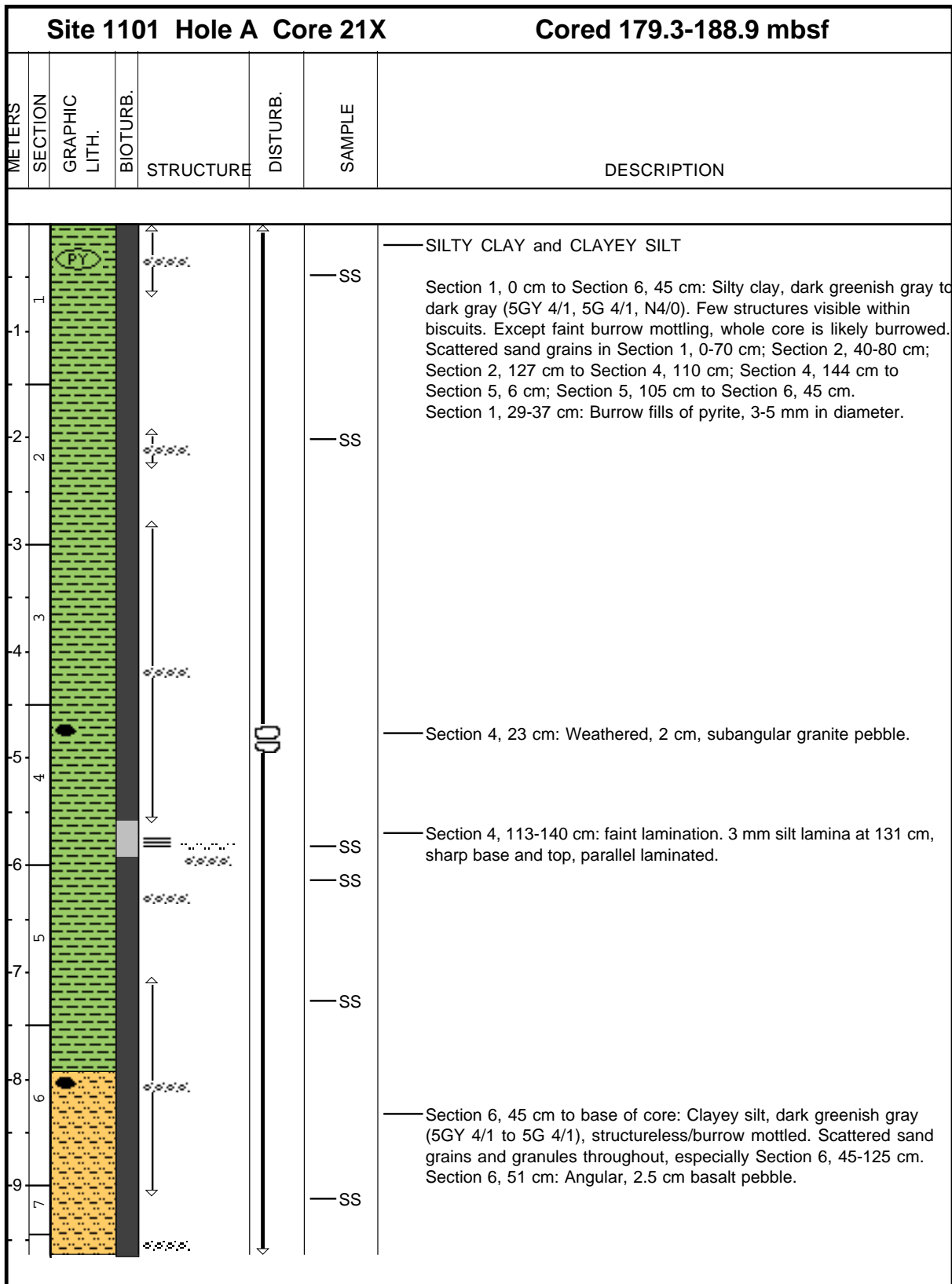
Core Image

Site 1101 Hole A Core 19X						Cored 160.1-169.7 mbsf	
METERS	SECTION	GRAPHIC LITH.	BIOTURB.	STRUCTURE	DISTURB.	SAMPLE	DESCRIPTION
1						SS	<p>CLAYEY SILT</p> <p>Section 1, 0-91 cm: Clayey silt highly disturbed by drilling. 91-125 cm: Weakly laminated silty clay, greenish gray (5GY 5/1). A 2 mm silt bed at 100 cm. 125-150 cm: Clayey silt disturbed by drilling.</p> <p>Section 2, 0-150 cm: Massive clayey silt disturbed by drilling. A bed of clay and silt sized carbonate (aragonite) at 110-126 cm.</p> <p>Sections 3-5 and Core Catcher: Clayey silt, massive and structureless, greenish gray (5Y 5/1) throughout.</p>
1						SS	
2						SS	
3						SS	
4						SS	
5							
6							

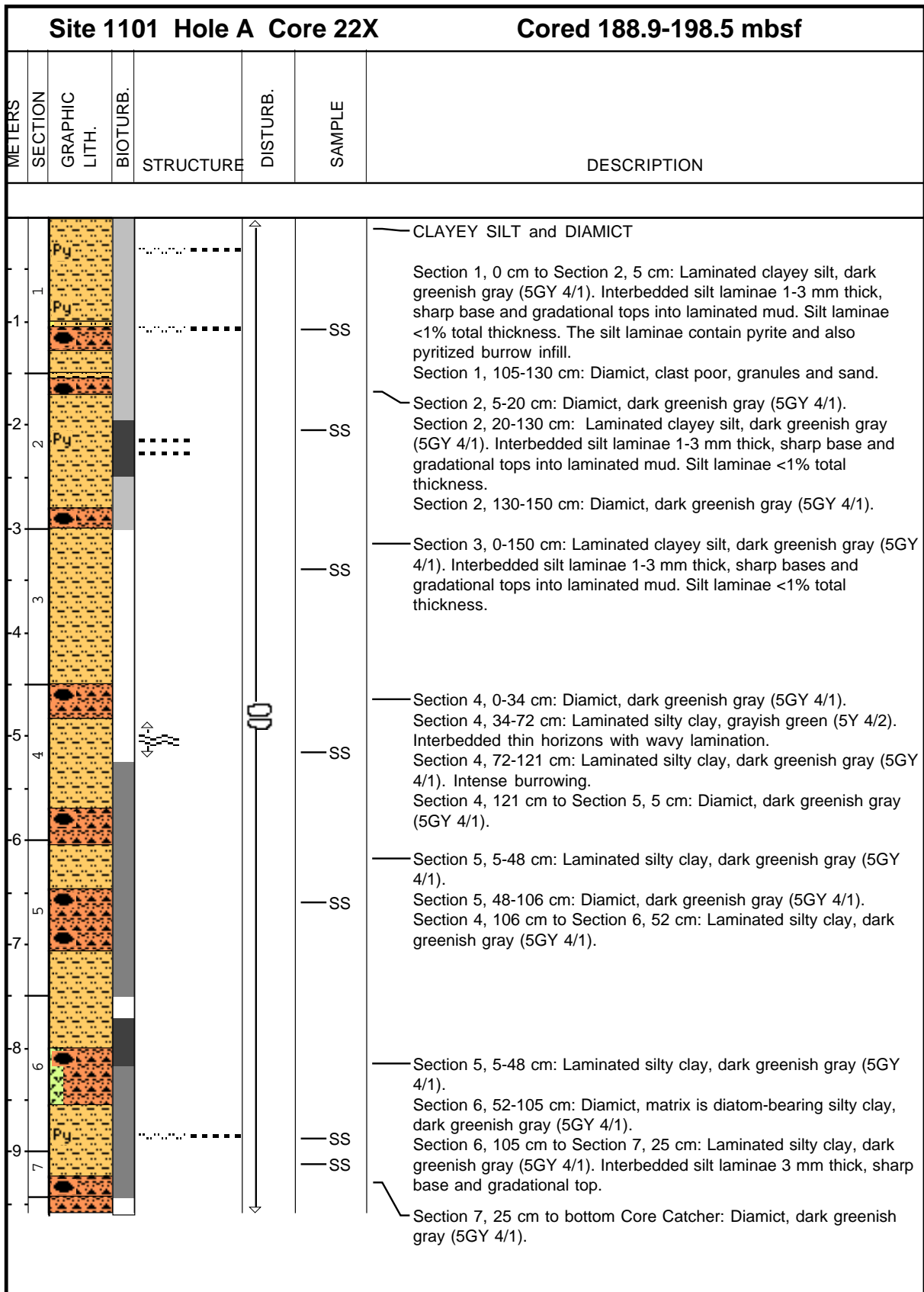
Core Image



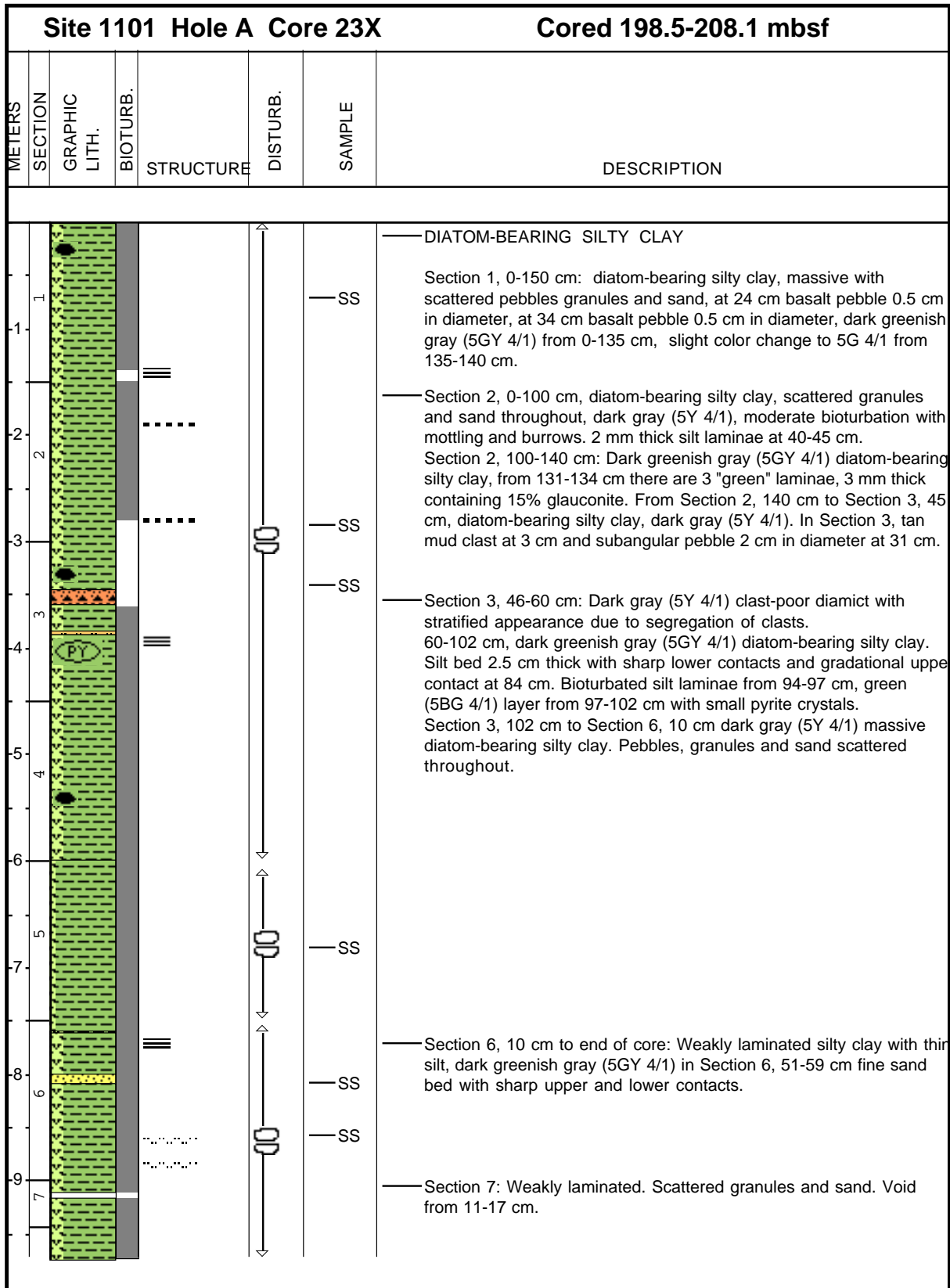
Core Image



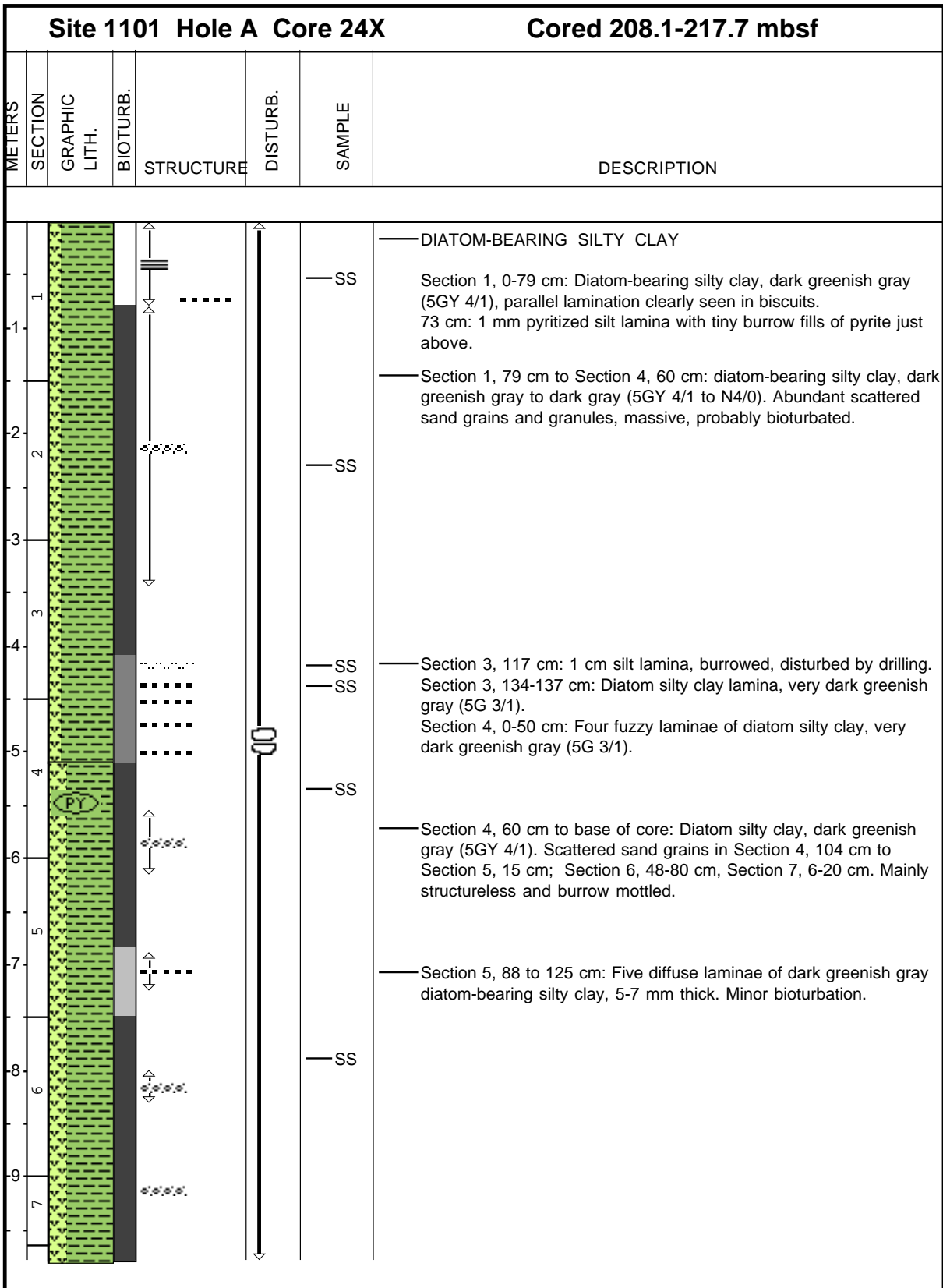
Core Image



Core Image



Core Image



**CORE DESCRIPTIONS
SMEAR SLIDES, SITE 1101**

		Note: 0.5 equal to tr.											Size											Composition - Siliclastic											Composition - Biogenic											
Leg	Site	Hole	Core	Type	Section	Interval (cm)	Depth (mbsf)	Depth (mcd)	Described by	Major lithology (1)	Minor lithology (2)	Sand	Silt	sum (sand+silt)	Clay	sum (sand+silt+clay)	Quartz	Feldspar	Clay (too fine to identify)	Mica	Glauconite	Rock Fragments	Volcanic Glass	Acc. Minerals	Carbonate	Opaque	Framboids/micronodules	Other	Terrigenous (tot silico-clay counts)	Total clay + siliclastic	Nannofossils	Foraminifers	Diatoms	Radiolarians	Coccolith	Silicoflagellates	Sponge Spicules	Shell debris	unidentified/other	Total Biogenic	Sediment or Rock Name					
178	1101	A	20	X	3	24	172.9		wlf		2	70	20		10	30.0	5.0	9.0	5.0		30.0	2.0	2.0	1.0				5.0		90		7.0	1.0			1.0		1.0		10	sandy mud					
178	1101	A	20	X	4	112	175.3		wlf	1		2	50		48	30.0	10.0	10.0	1.0		30.0		2.0	10.0				5.0		90		2.0	2.0			1.0		5.0		10	clayey silt					
178	1101	A	20	X	7	20	178.9		wlf	1		5	60		35	25.0	10.0	10.0	3.0		25.0		2.0	10.0				5.0		90		3.0	2.0			1.0		4.0		10	clayey silt					
178	1101	A	21	X	1	46	179.8		eac	1		0	40		60	60.0	29.0	2.0								2.0		4.0		97		2.0	0.5			1.0				3	silty clay					
178	1101	A	21	X	2	50	181.3		eac	1		2	60		40	75.0	10.0		2.0							2.0		6.0		95		5.0				0.5				5	clayey silt					
178	1101	A	21	X	5	12	185.4		eac	1		0	40		60	15.0	10.0	60.0	5.0							5.0		4.0		99		1.0				0.5				1	silty clay					
178	1101	A	21	X	5	125	186.6		eac	1		0	30		70	15.0	6.0	70.0	6.0									5.0		98		2.0				0.5				2	silty clay					
178	1101	A	21	X	7	10	188.4		eac	1		2	70		38	30.0	8.0	30.0	5.0							2.0		5.0		98		2.0				0.5				2	clayey silt					
178	1101	A	22	X	1	104	189.9		ce		2	0	75		25	35.0	5.0	30.0	5.0							20.0		4.0		97		3.0				0.5				3	clayey silt					
178	1101	A	22	X	2	54	190.9		ce	1		0	55		45	30.0	5.0	46.0	5.0							3.0		3.0		94		5.0				1.0				6	clayey silt					
178	1101	A	22	X	3	38	192.3		ce	1		15	45		40	25.0	10.0	58.0	2.0							3.0		2.0		94		5.0				1.0				6	silty mud					
178	1101	A	22	X	4	63	194		ce	1		0	25		75	20.0	5.0	67.0	2.0					3.0		1.0		2.0		96		3.0					1.0			3	silty clay					
178	1101	A	22	X	5	58	195.5		ce	1		3	20		17	15.0	3.0	69.0											87		10.0			0.5	3.0				13	silty clay						
178	1101	A	22	X	6	133	197.7		ce		2	5	95		0	60.0	10.0		5.0						15.0		10.0		100											0	silt					
178	1101	A	22	X	7	11	198		ce	1		0	25		75	20.0	5.0	73.0	2.0										96			3.0					1.0			4	silty clay					
178	1101	A	23	X	1	70	199.2		eac	1		0	40		60	60.0	32.0		2.0								2.0		76		3.0		1.0				3.0			24	Diatom-bearing silty clay					
178	1101	A	23	X	2	133	201.3		eac		2	3	30		67	40.0	20.0			20.0							2.0		77		20.0	0.5			3.0				23	Diatom-bearing silty clay						
178	1101	A	23	X	3	40	201.9		eac	1		0	30		70	10.0	5.0	60.0	1.0								5.0		81		15.0				0.5				19	Diatom-bearing silty clay						
178	1101	A	23	X	5	82	205.3		eac	1		0	24		76	8.0	3.0	70.0	2.0								5.0		88		8.0				4.0				12	silty clay						
178	1101	A	23	X	6	55	206.6		eac		2	90	10		0	40.0	30.0				30.0								100											0	sand					
178	1101	A	23	X	6	105	207.1		eac	1		0	30		70	10.0	6.0	60.0											76			20.0	0.5			4.0				24	Diatom-bearing silty clay					
178	1101	A	24	X	1	52	208.6		eac	1		0	40		60	18.0	60.0							1.0		1.0			80		0.5	20.0					0.5			20	Diatom-bearing silty clay					
178	1101	A	24	X	2	78	210.4		cjp	1		1	40		59	15.0	5.0	50.0					8.0		1.0	1.0			80		20.0	0.5							20	Diatom-bearing silty clay						
178	1101	A	24	X	3	116	212.3		cjp		2	10	90		0	40.0	10.0		1.0		33.0		3.0			2.0			89		10.0	0.5			1.0				11	Diatom-bearing silty clay						
178	1101	A	24	X	3	135	212.5		cjp		2	0	40		60	18.0		50.0								2.0			70		30.0	0.5					0.5			30	Diatomaceous silty clay					
178	1101	A	24	X	4	83	213.4		cjp	1		1	40		60	18.0						50.0		1.0		1.0			70		30.0						0.5			30	Diatomaceous silty clay					
178	1101	A	24	X	6	37	216		cjp	1		0	50		50	20.0	3.0	40.0					5.0		1.0		1.0		70		30.0					0.5				30	Diatomaceous silty clay					