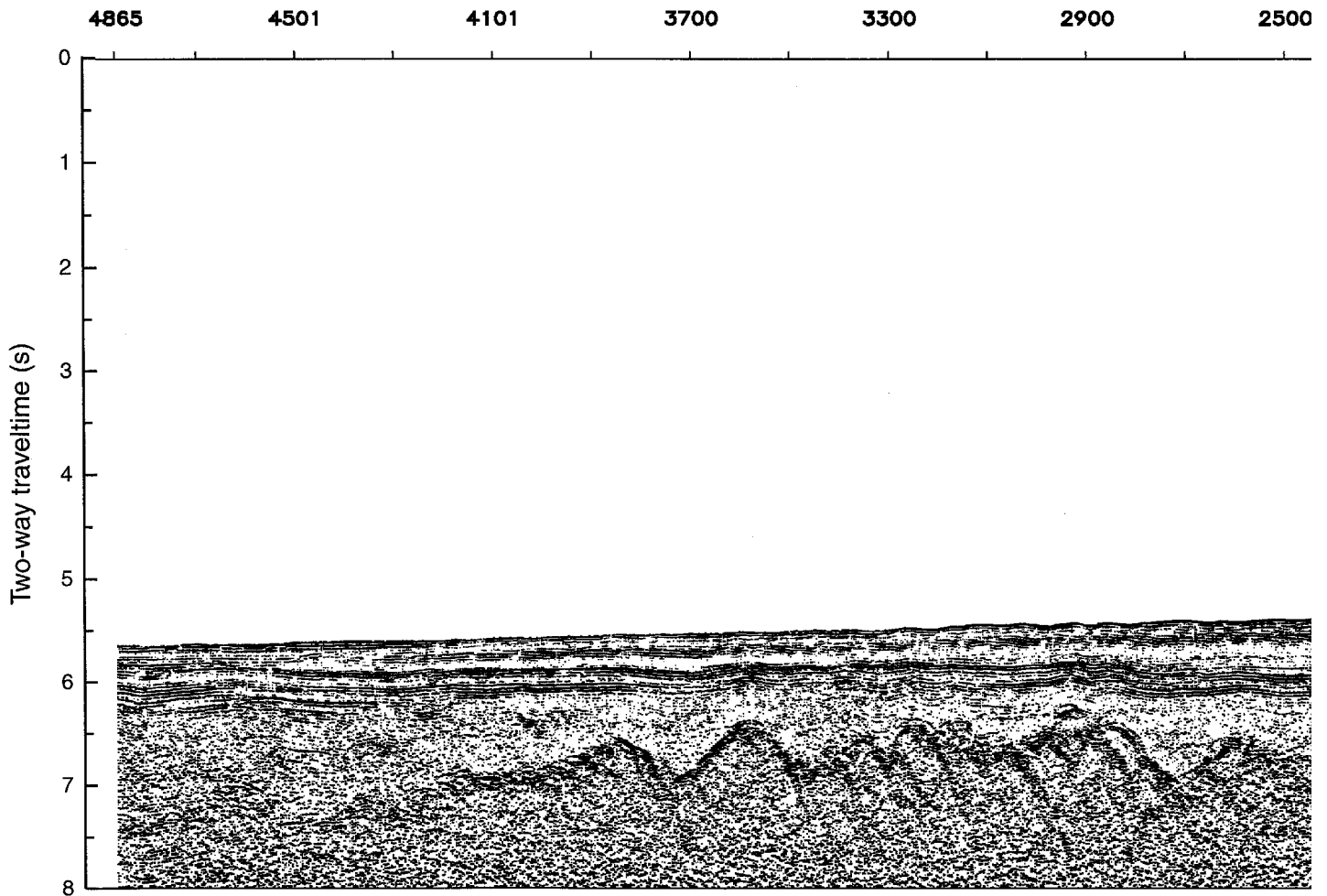


ODP Proceedings, Initial Reports, Volume 178: Chapter 1, Figure AF1. Seismic reflection profiles crossing sites drilled during Leg 178, with schematic maps showing profile locations. For a description of acquisition parameters, see Tables **T9**, p. 66, and **T10**, p. 67, in the "Explanatory Notes" chapter. For a description of processing parameters and brief accounts of regional geological significance, see "**Appendix**," p. 24, in the "Leg 178 Summary" chapter. (Continued on back side.)

Line I95-135A SP 100-4864

NORTH
↙



WEST

LINE 195135A SP 100-4864

LI

Site 1095

2100

1700

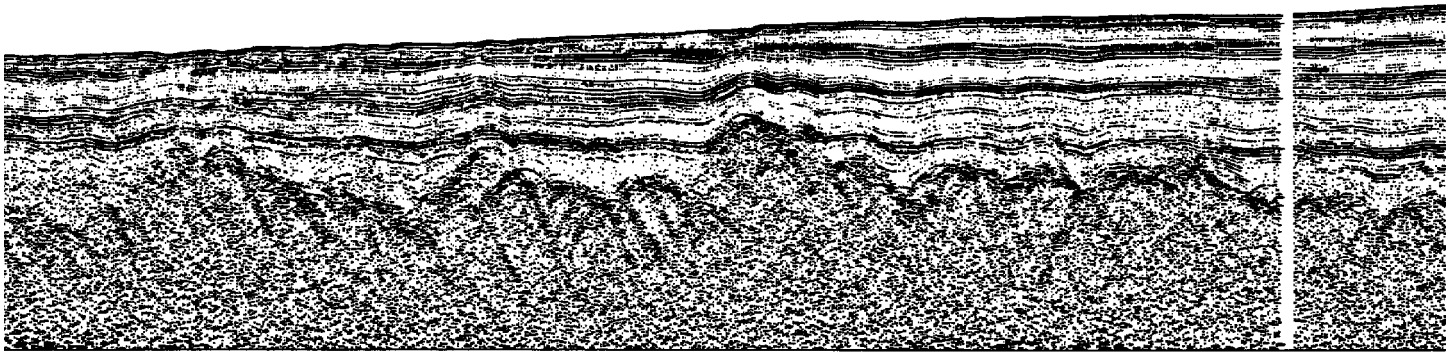
1300

900

500

100

7300



NE 195135 SP 100-7450

Site 1096 (Projected)

6900

6500

6100

5700

5300

4900

45



NORTH-WEST

10 Km

00

4100

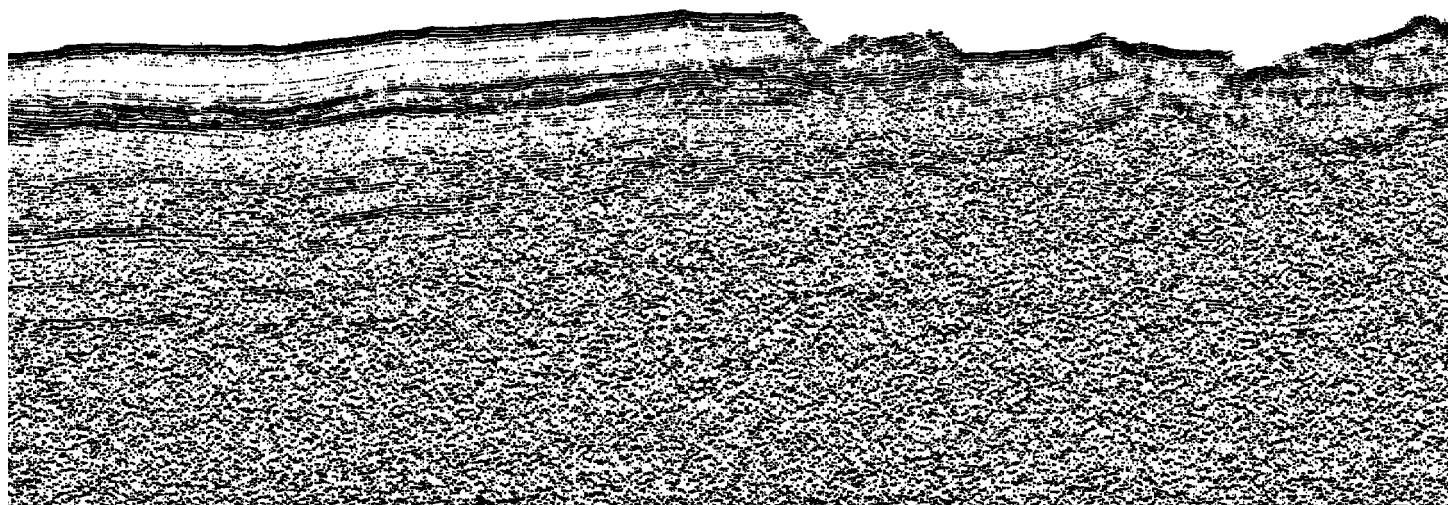
3700

3300

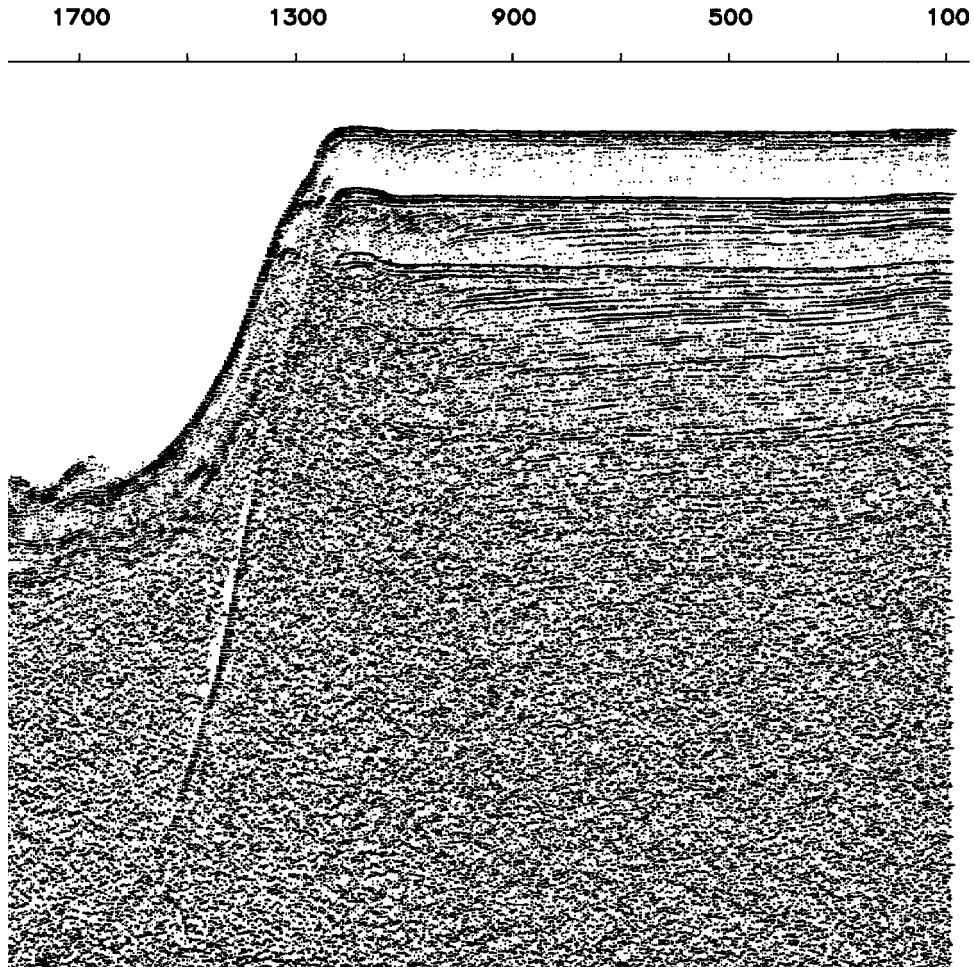
2900

2500

2100

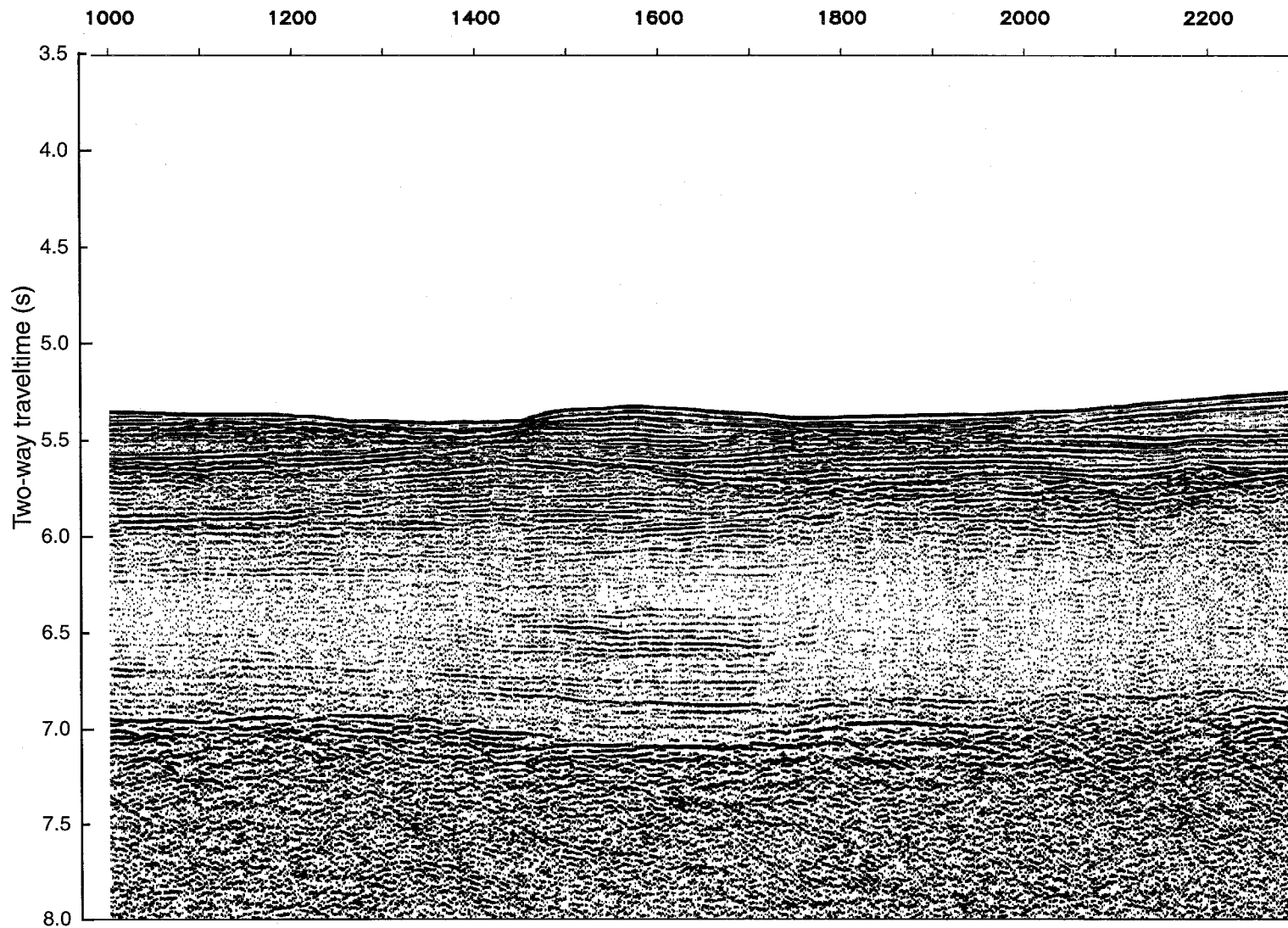


Line I95-135 SP 100-7450



Line I95-130 SP 1000-6700

10 Km





2400

2600

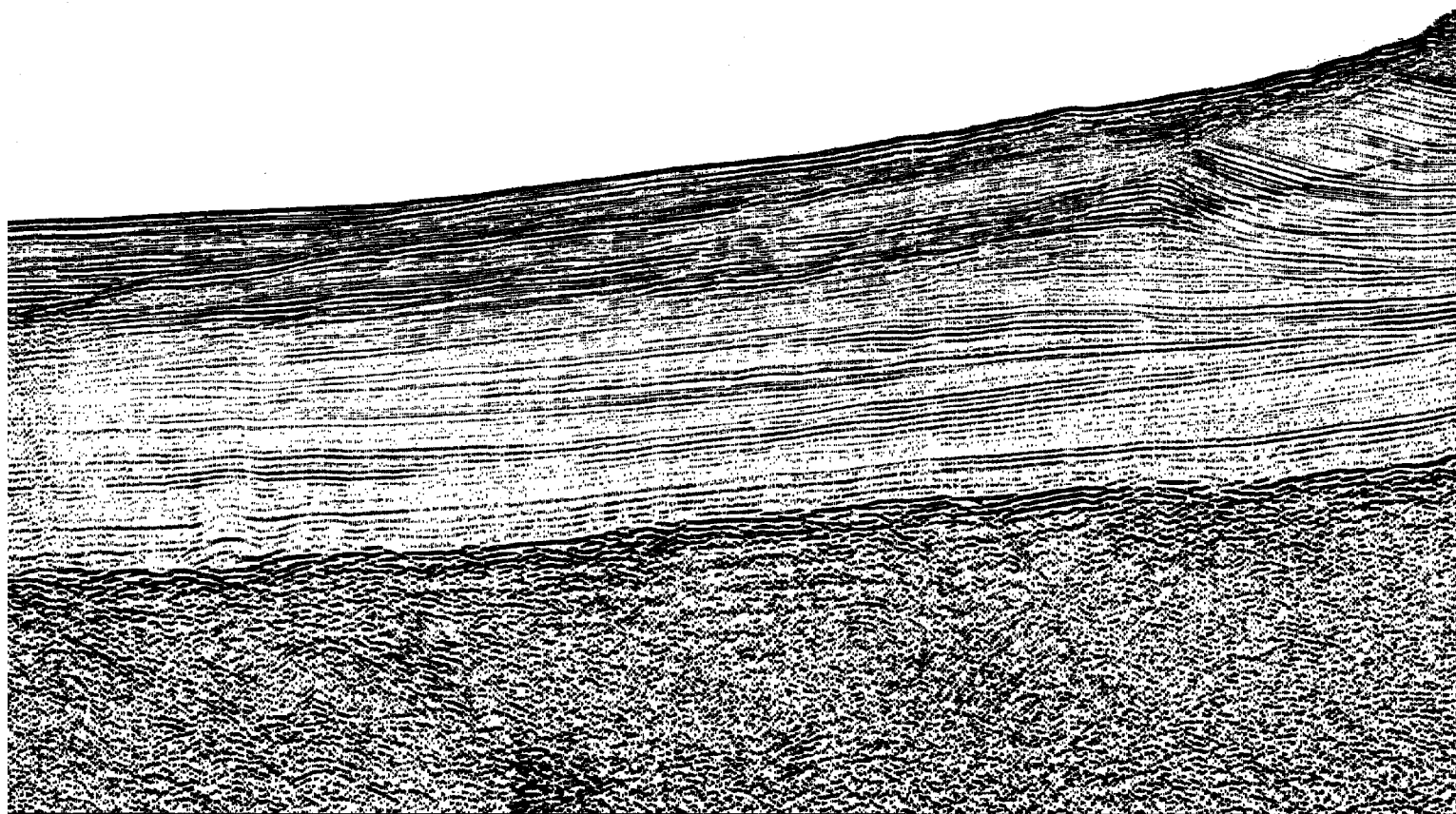
2800

3000

3200

3400

3600



NORTH-EAST

Site 1096

3800

4000

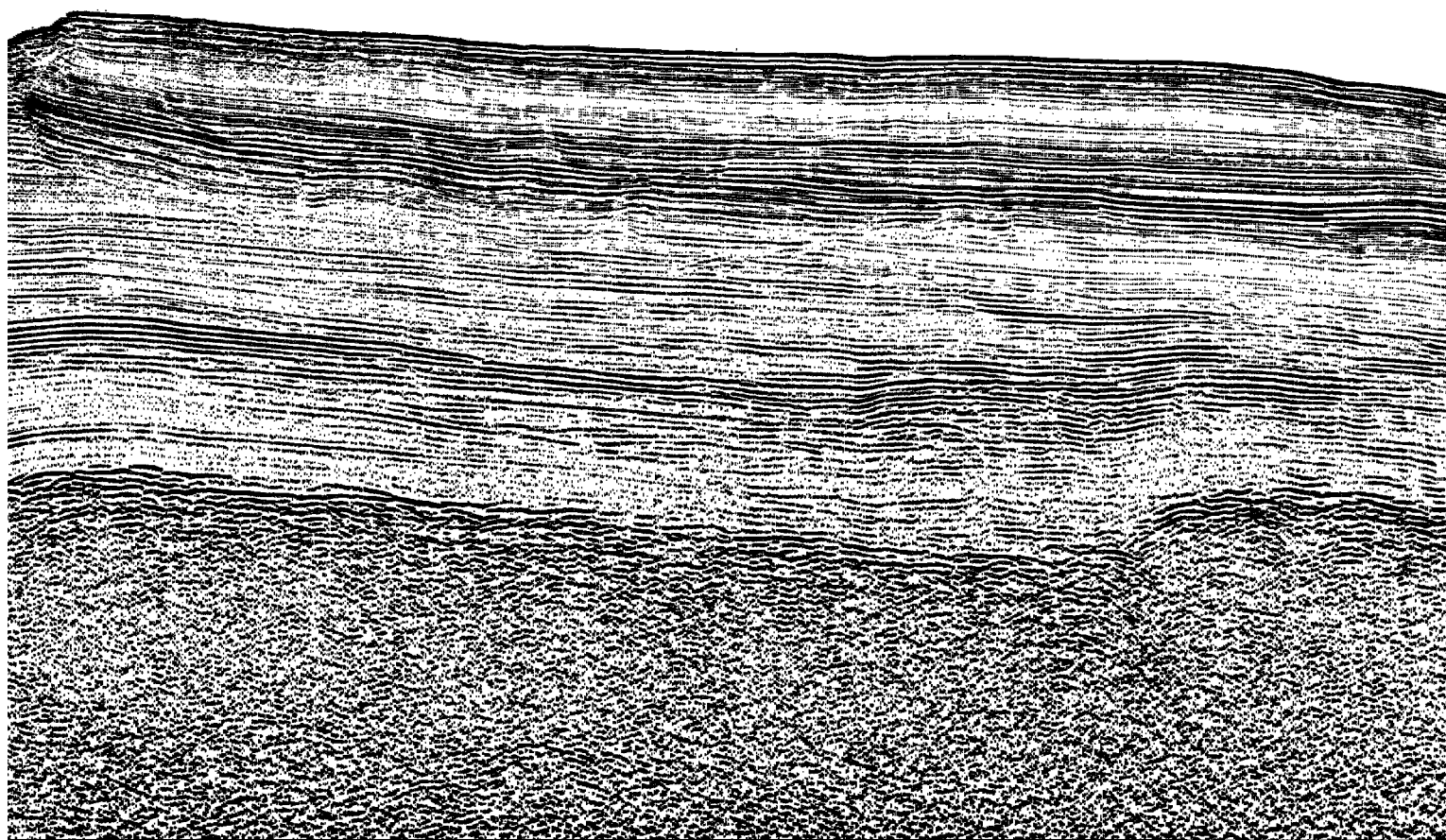
4200

4400

4600

4800

5000



Line I95-130 SP 10

5200

5400

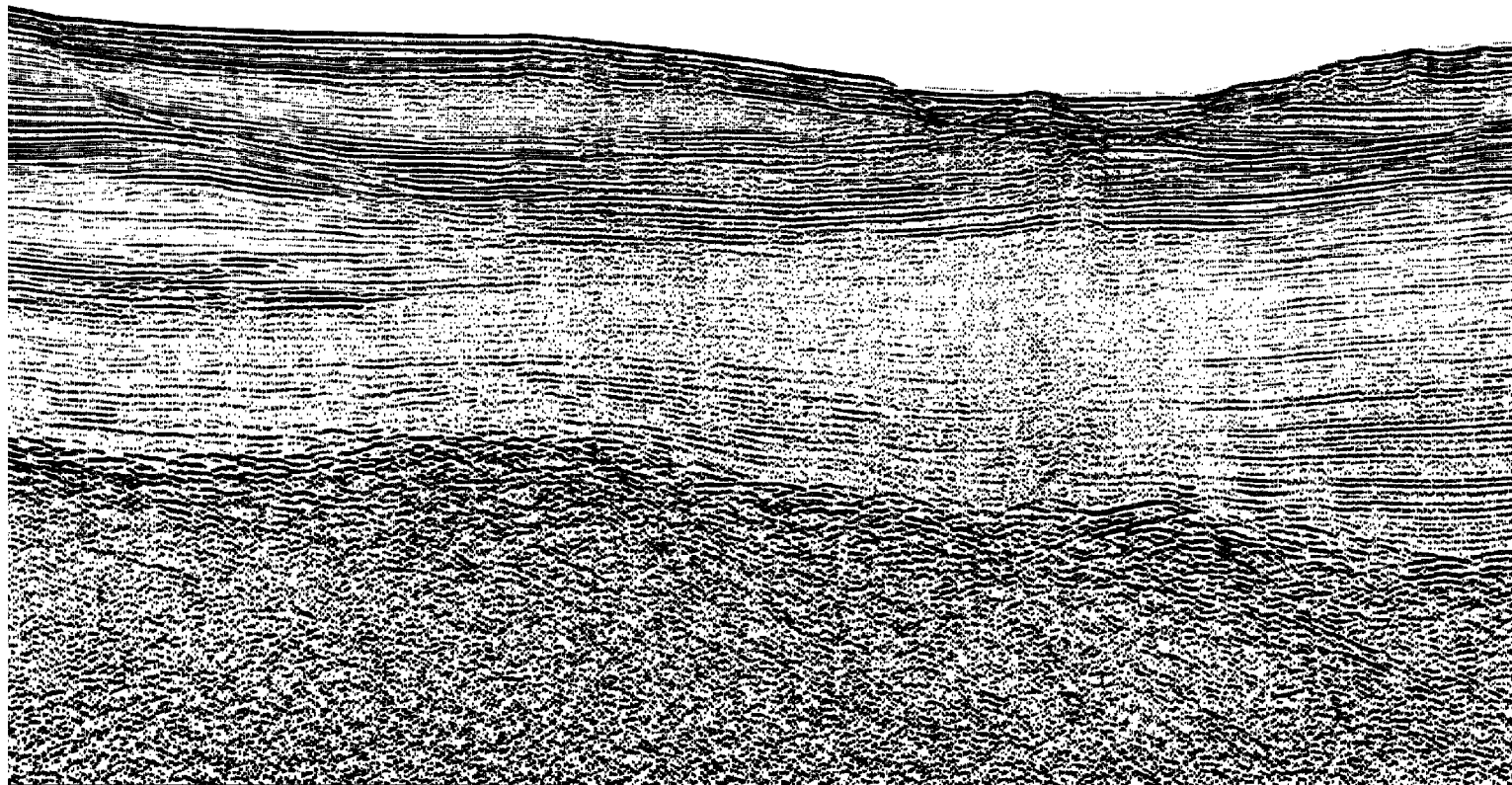
5600

5800

6000

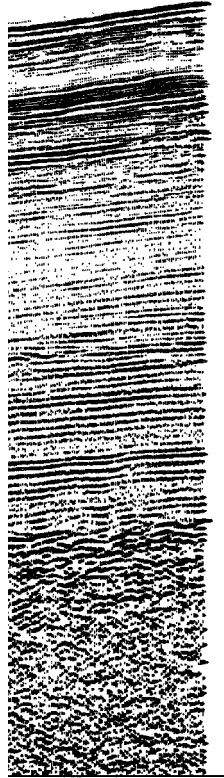
6200

6400

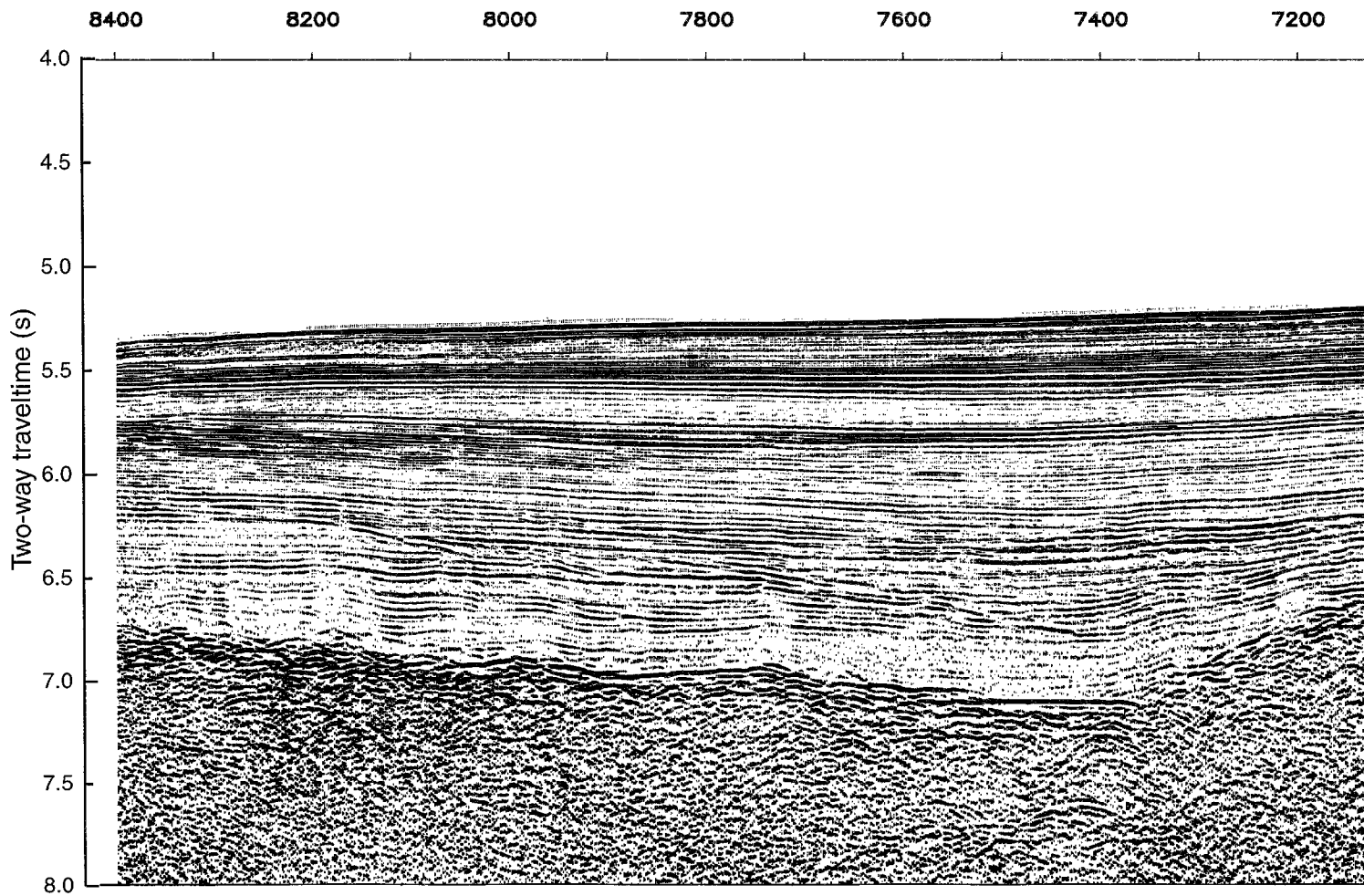


100-6700

6600 6700



Line I95-137 SP 4400-8400



SOUTH-WEST

Site 1095

7000

6800

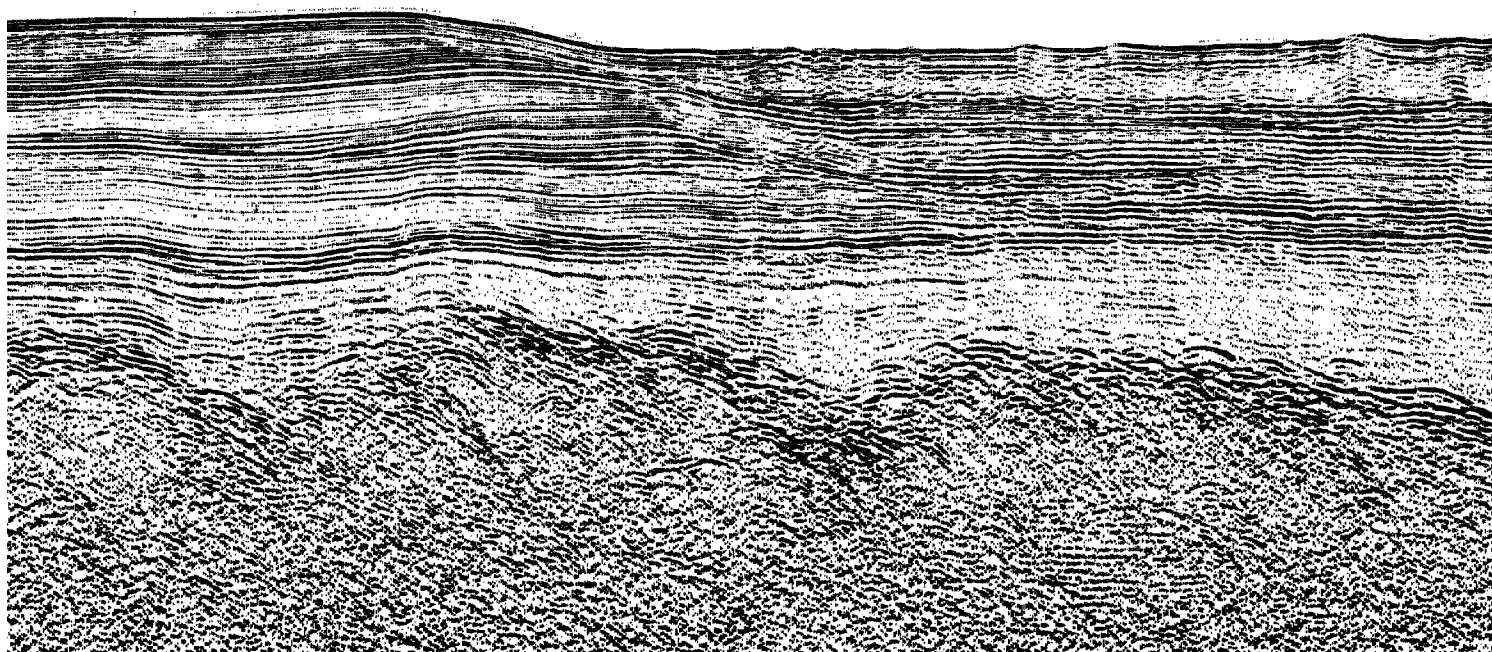
6600

6400

6200

6000

5800



10 Km

Line I95-137 SP 4400-8400

5600

5400

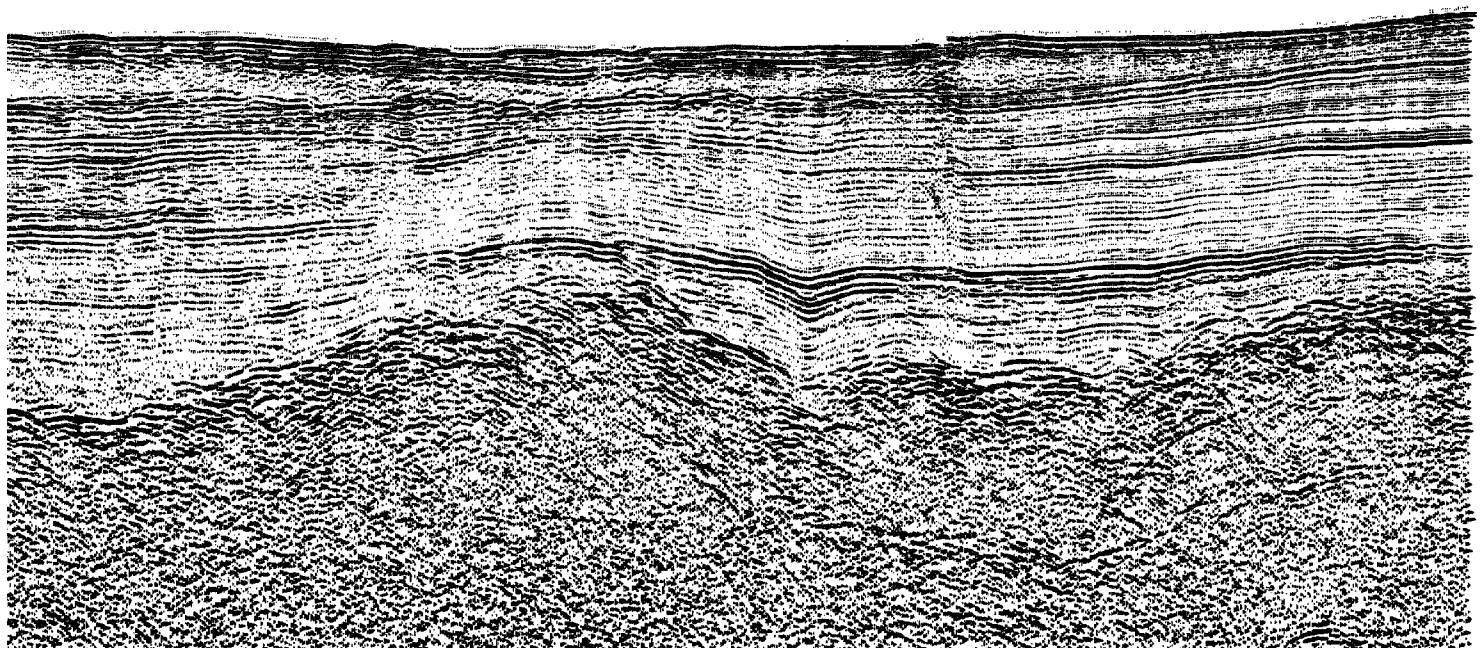
5200

5000

4800

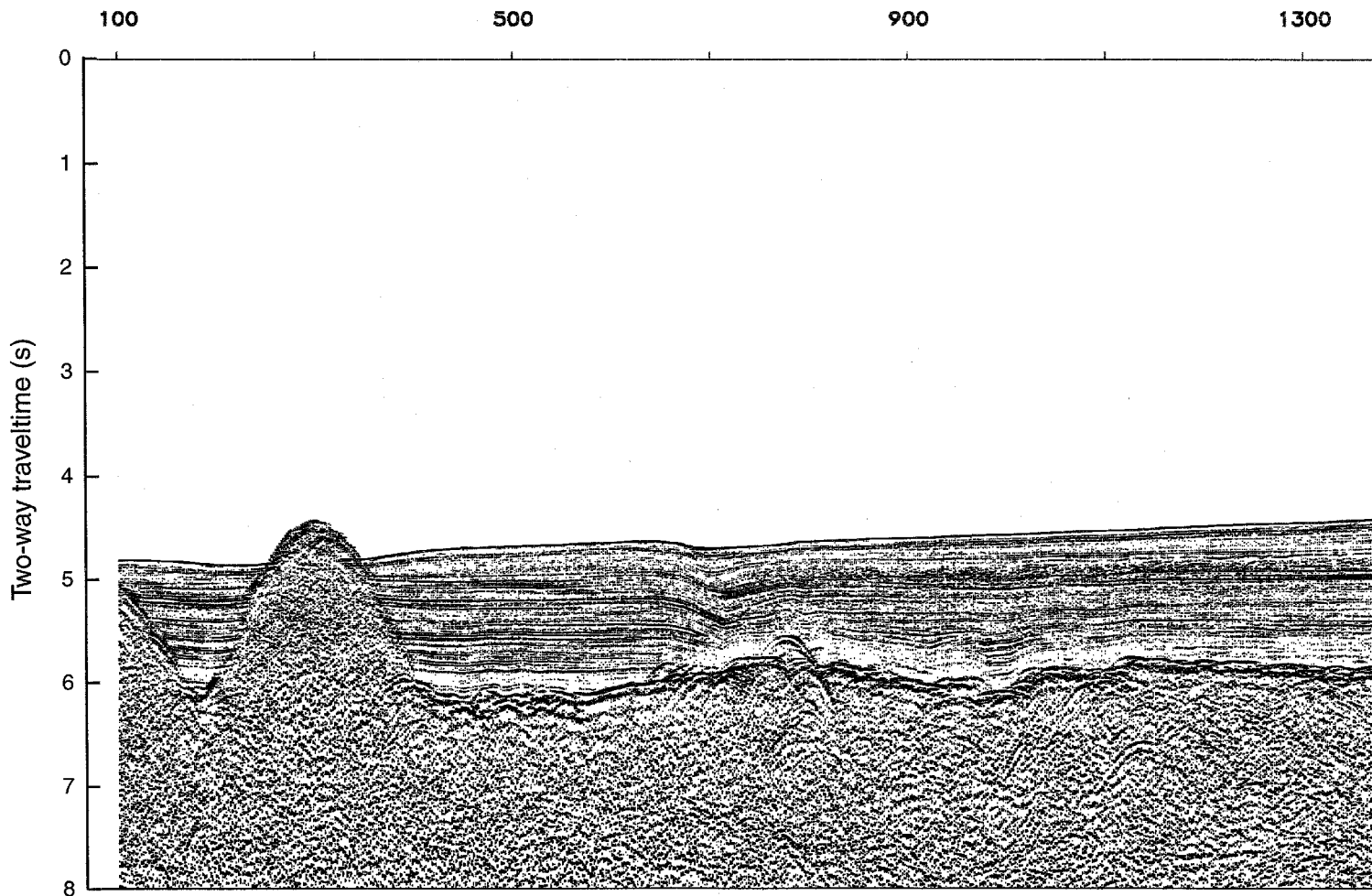
4600

4400



Line I92-114 SP 100-4500

Site 1101



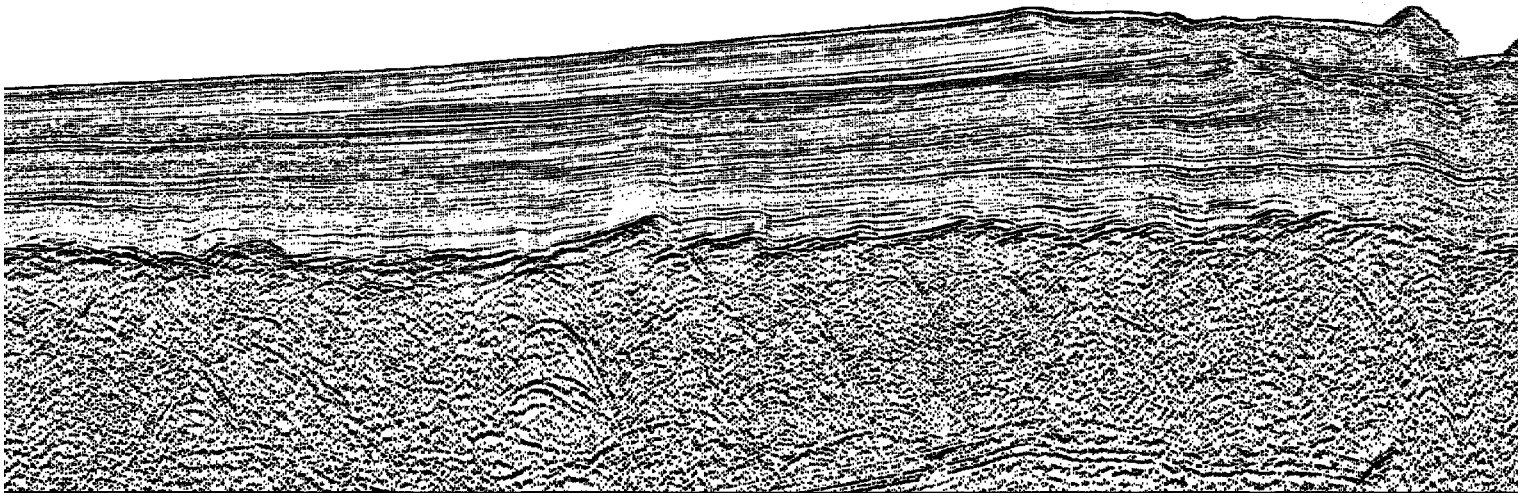
The Programma Nazionale di Ricerche in Antartide (PNRA), Italy, is acknowledged for contributing to the publication of

SOUTH-EAST

1700

2100

2500



these seismic profiles.

Line 192-11

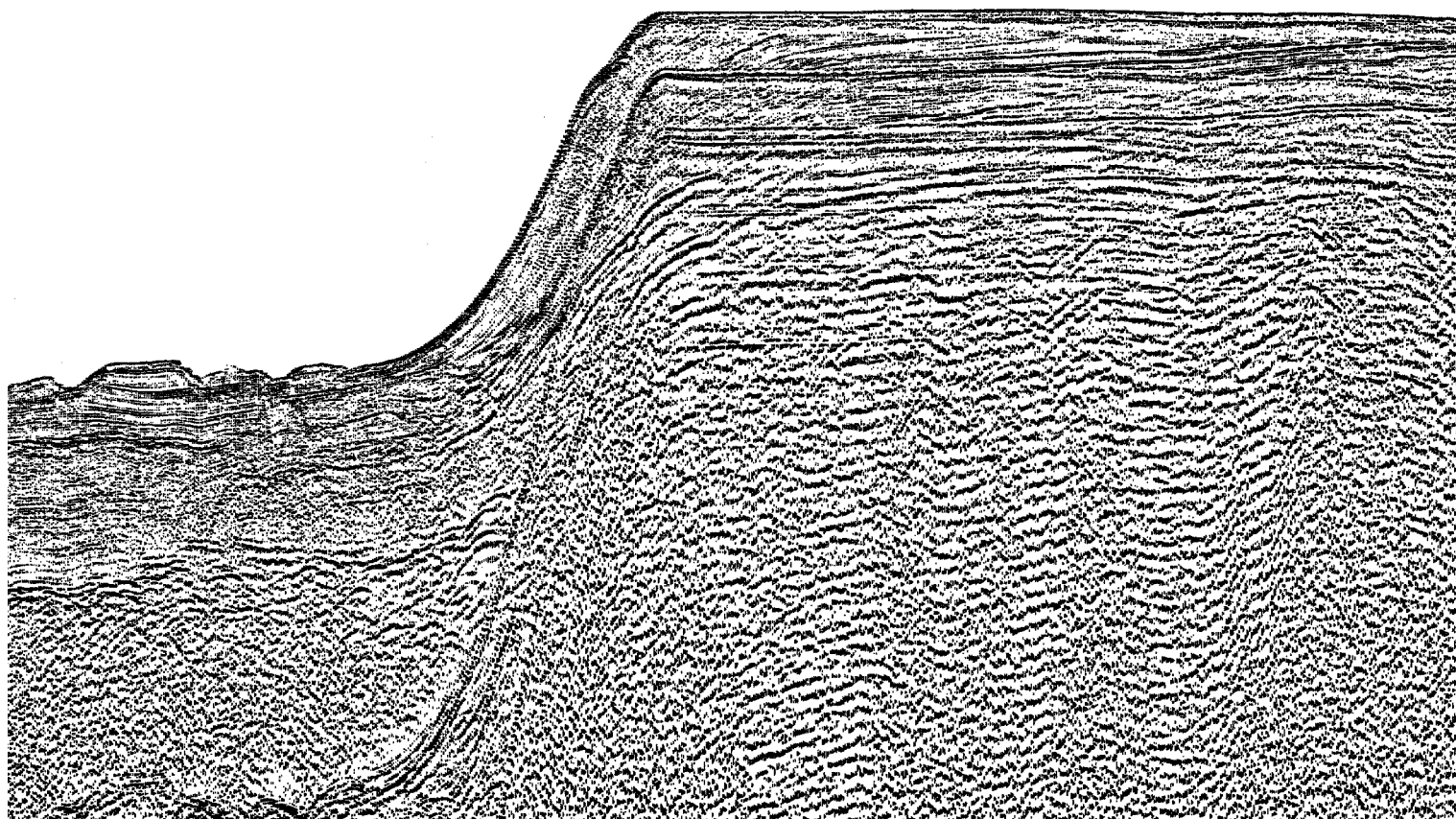
10 Km

2900

3300

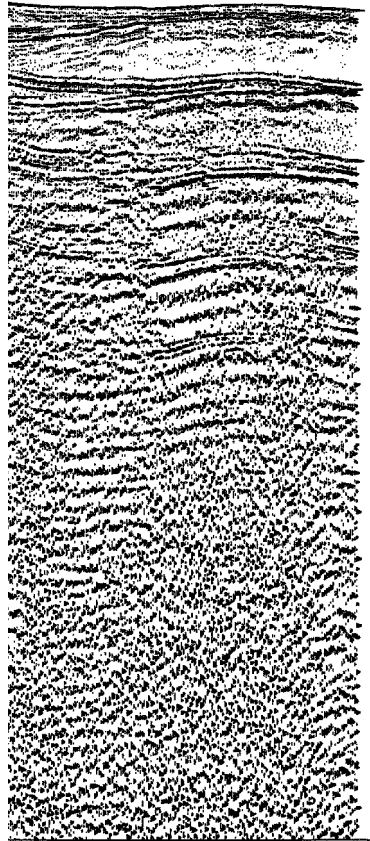
3700

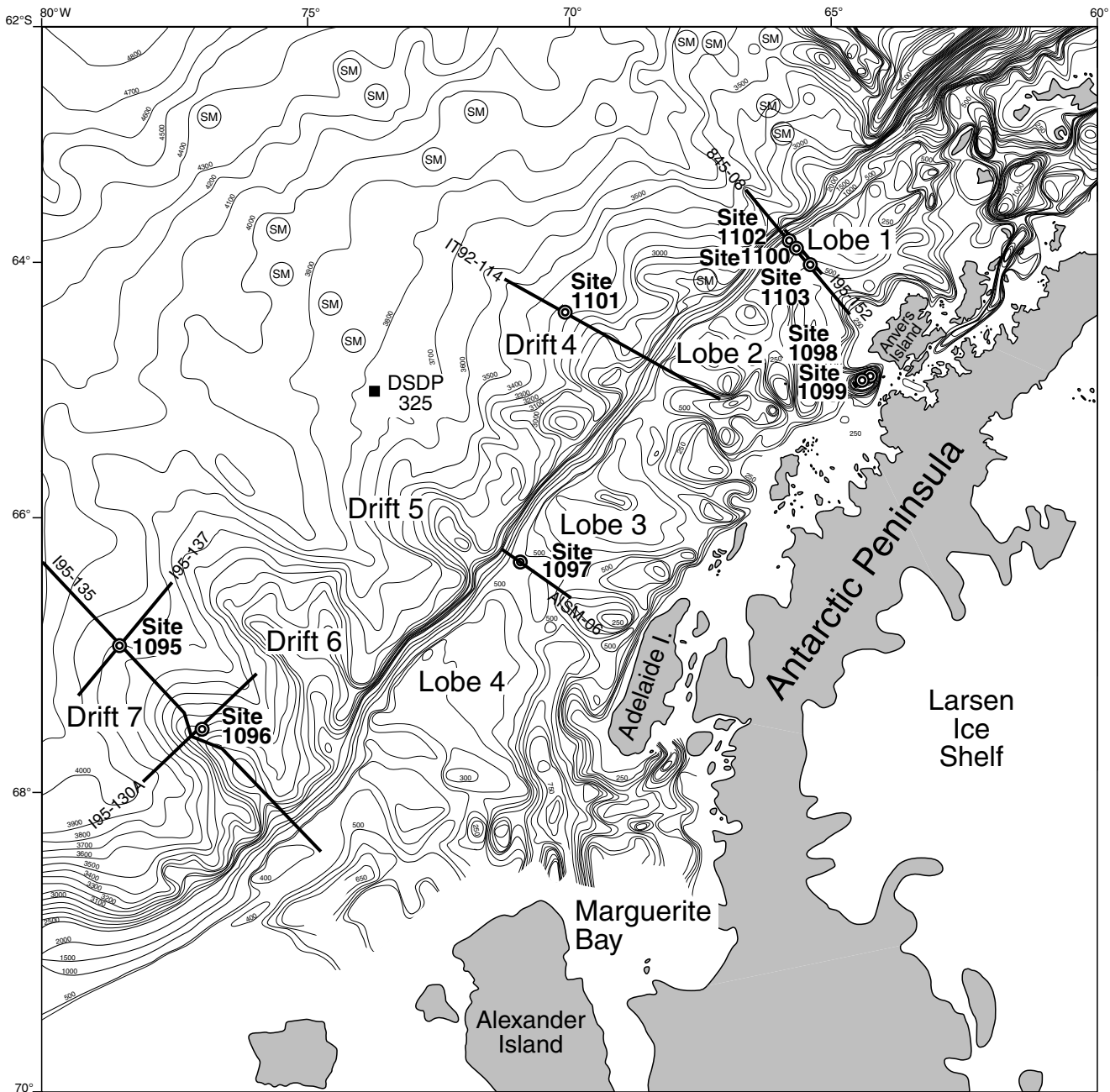
4100



I4 SP 100-4500

4500



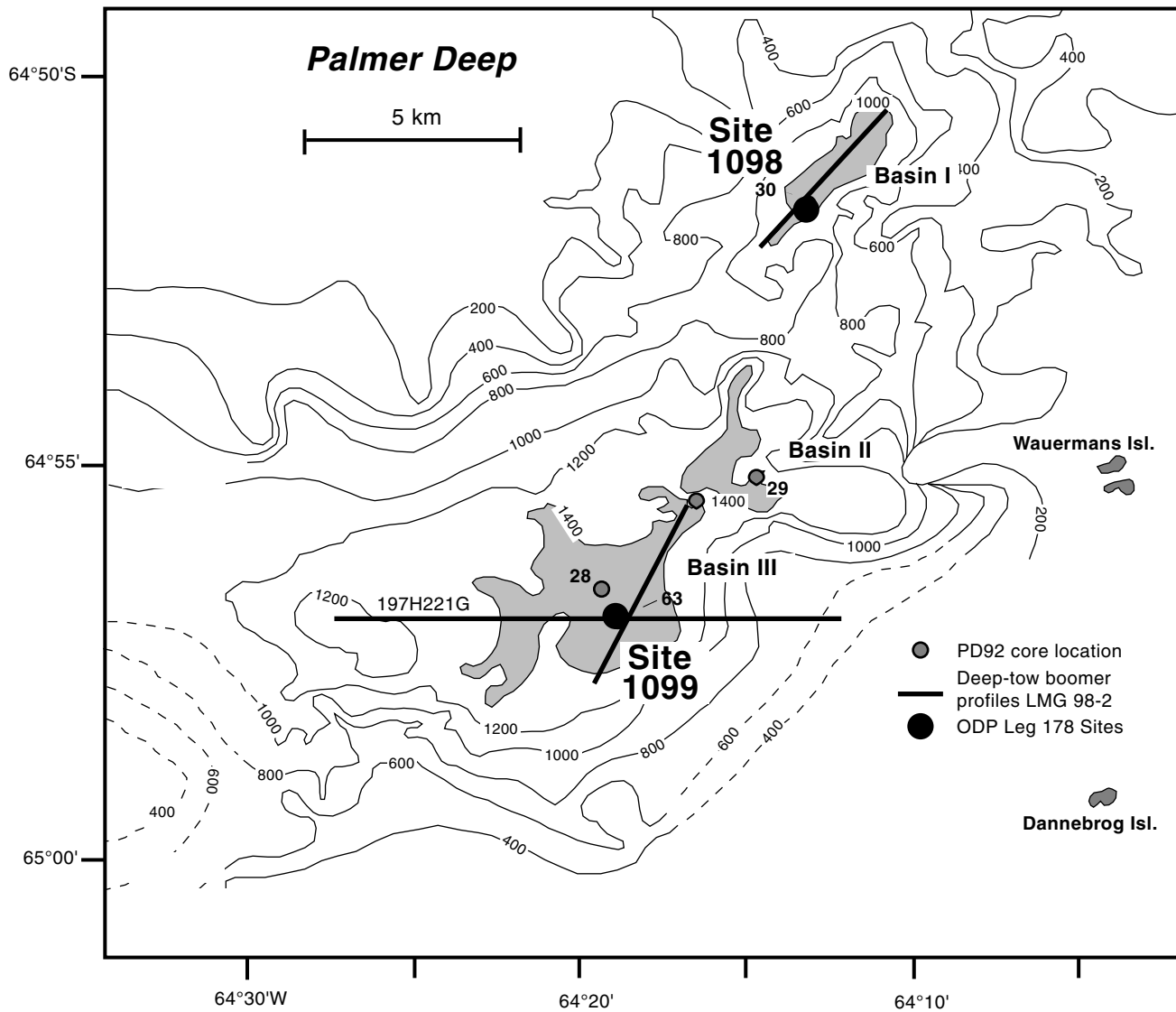


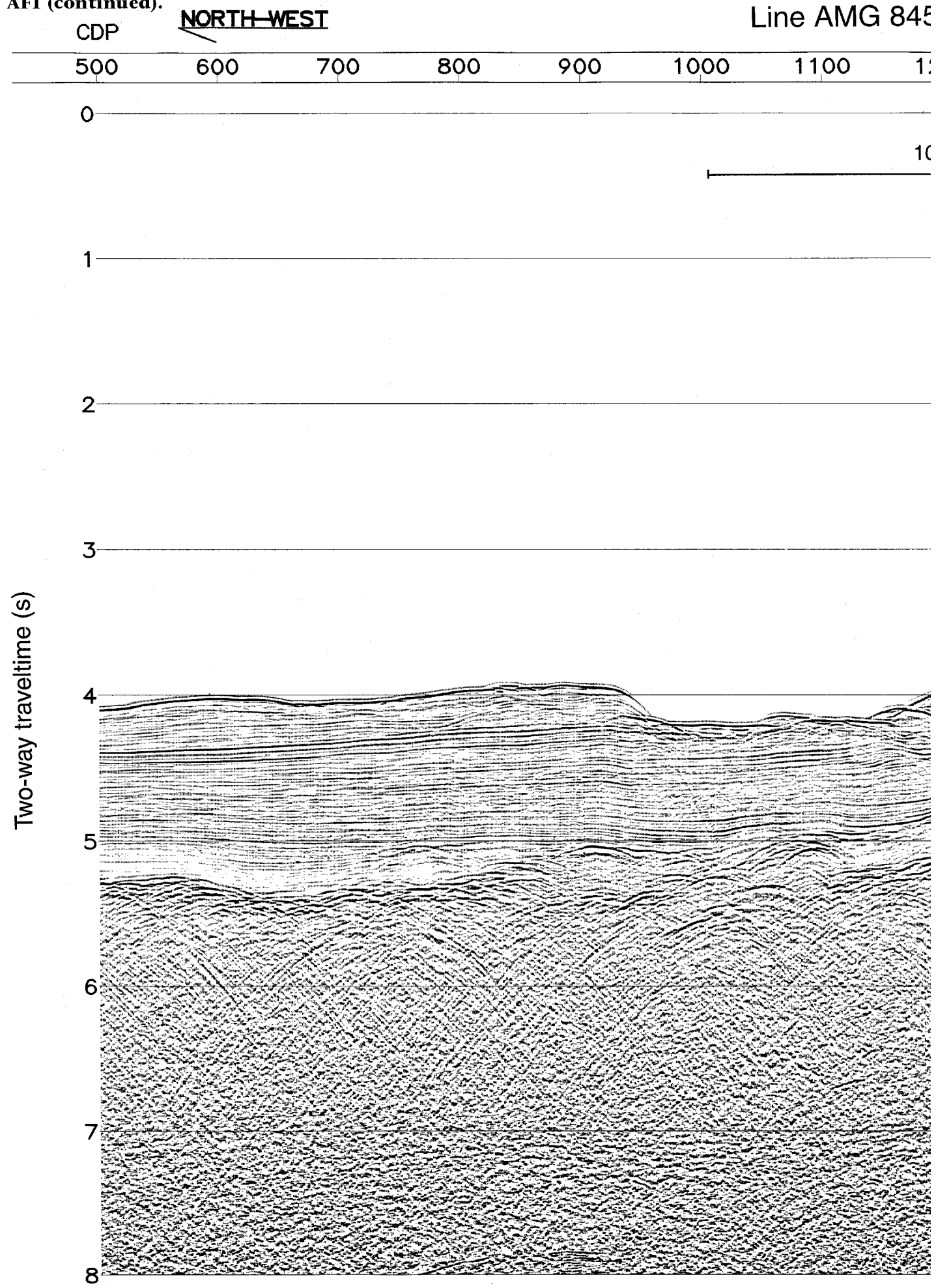
⊙ ODP Leg 178 Sites

■ DSDP Site 325

/ Seismic profiles

⊙ SM Seamount



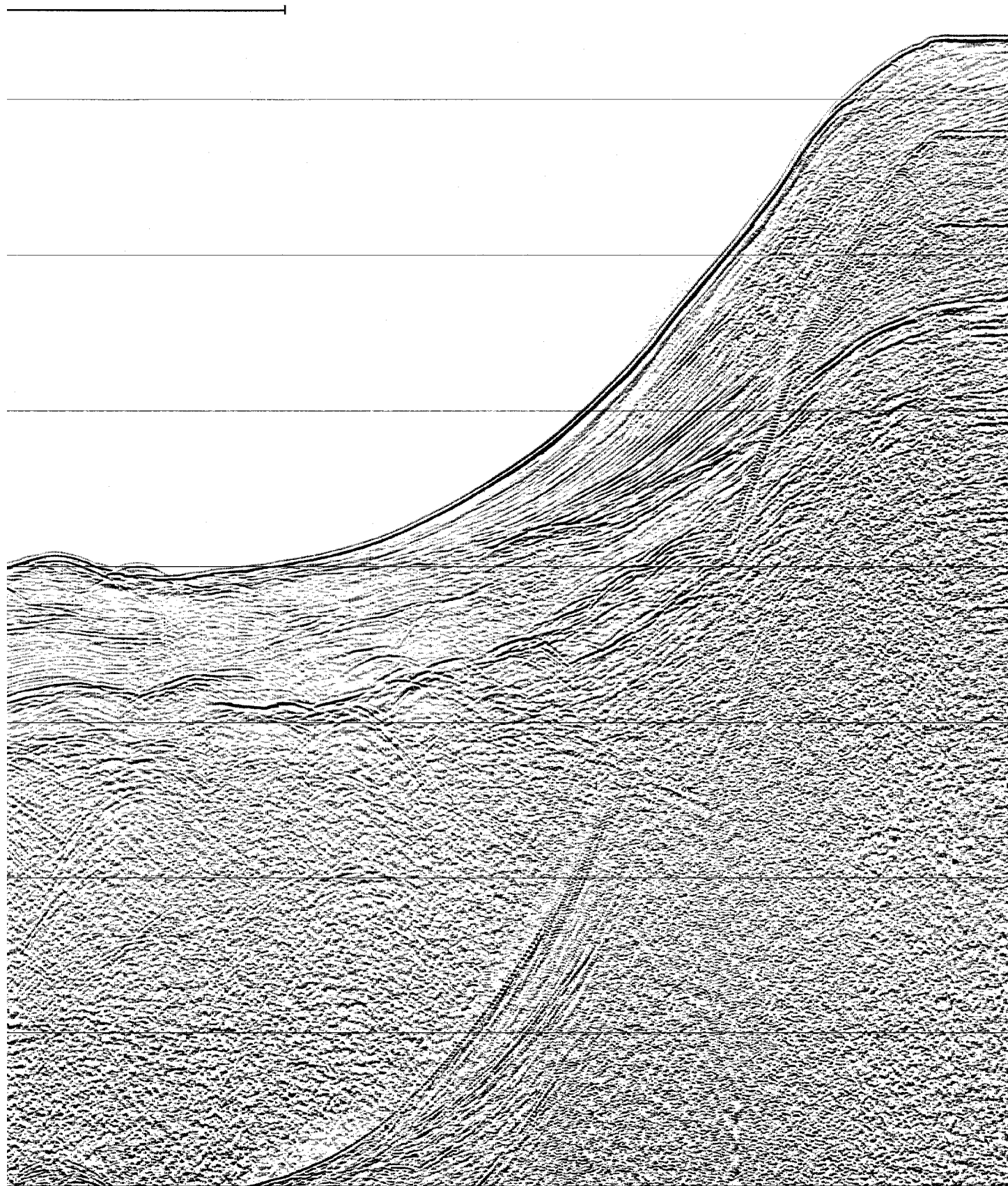


5-08

Site 1102

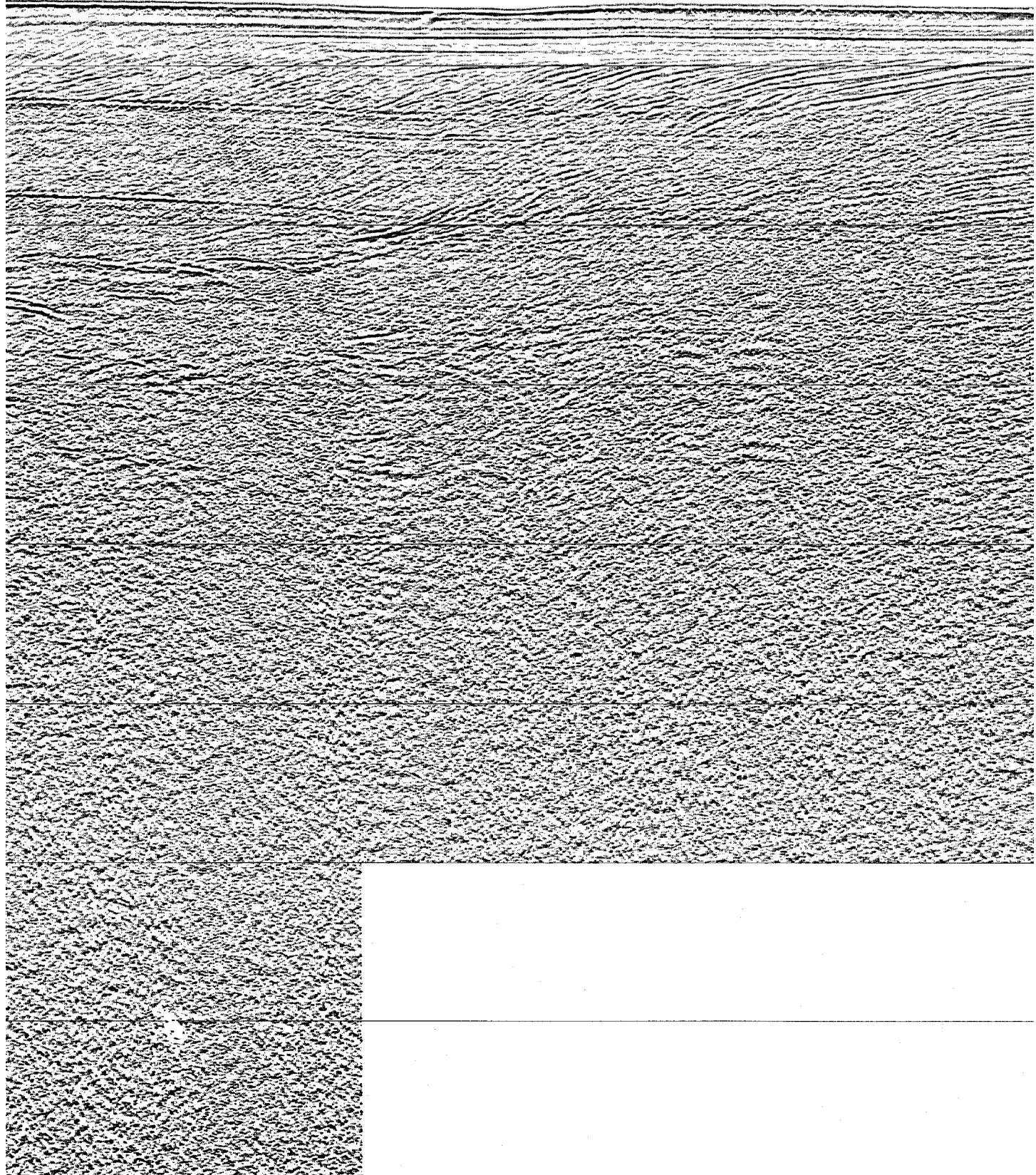
200 1300 1400 1500 1600 1700 1800 1900

0 Km



Site 1100

2000 2100 2200 2300 2400 2500 2600 2700



Site 1103

2800

2900

3000

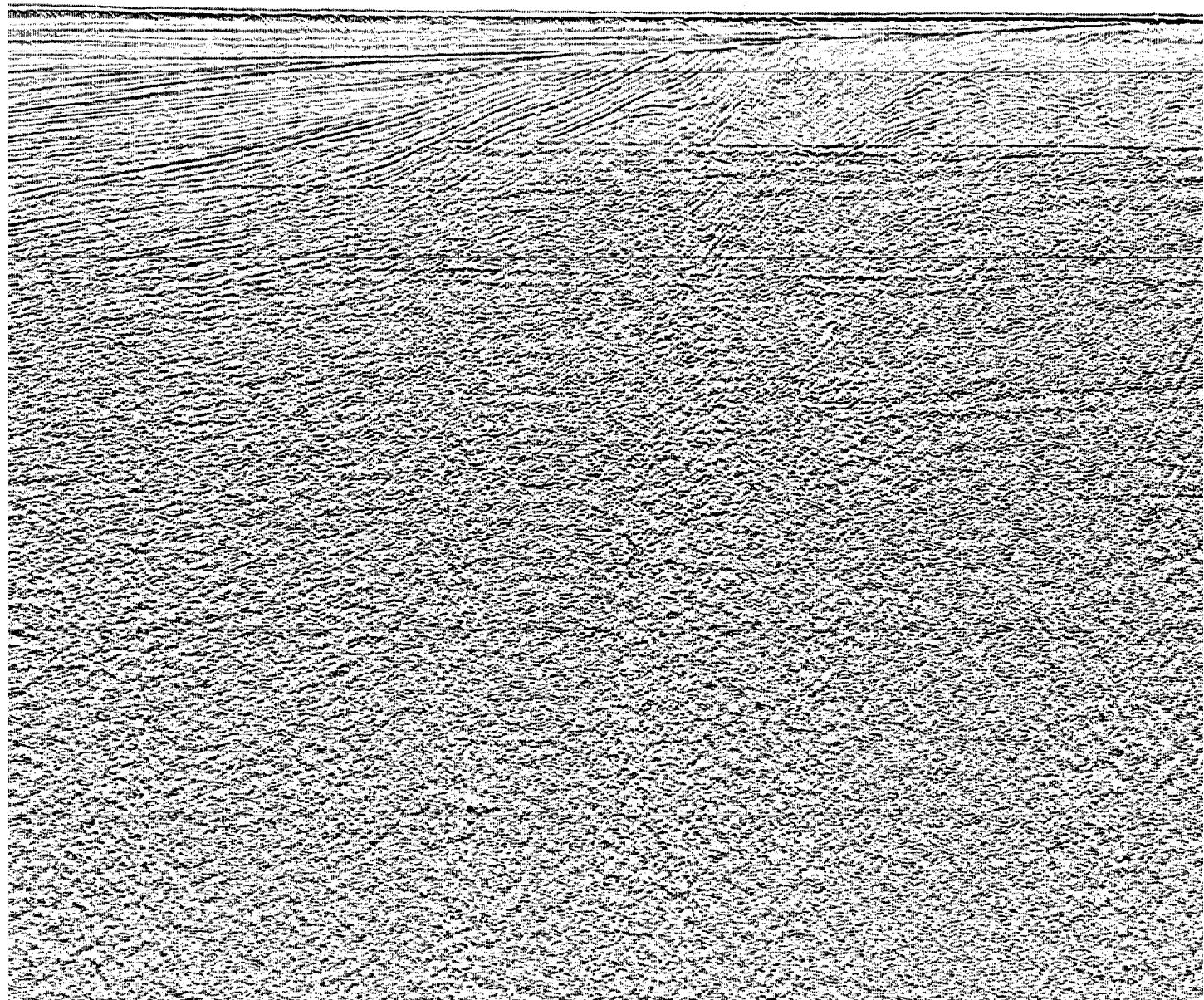
3100

3200

3300

3400

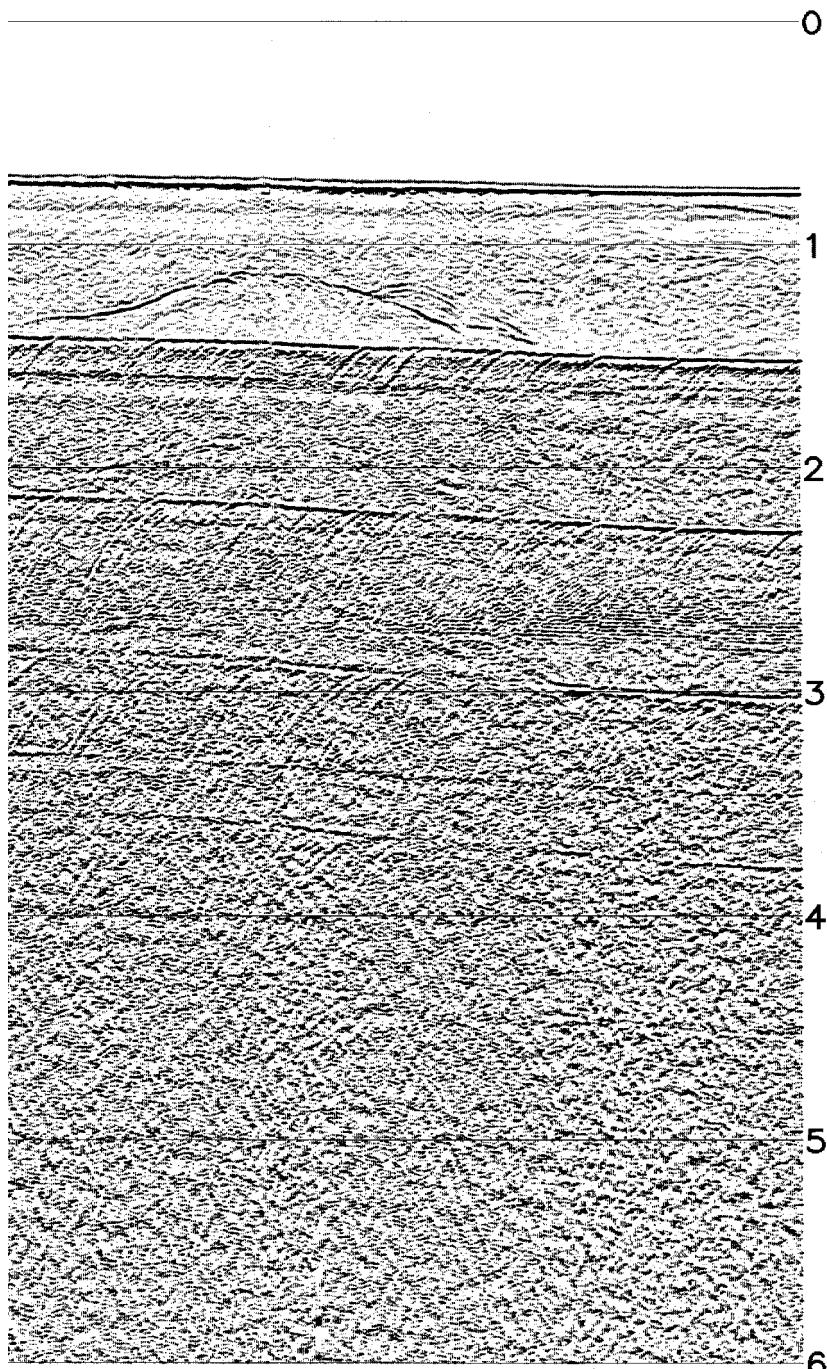
3500



SOUTH-EAST

CDP

0 3600 3700 3800 3900



0

1

2

3

4

5

6

7

8

Line I95-152 SP 400-2120

Site 1102

400

500

600

700

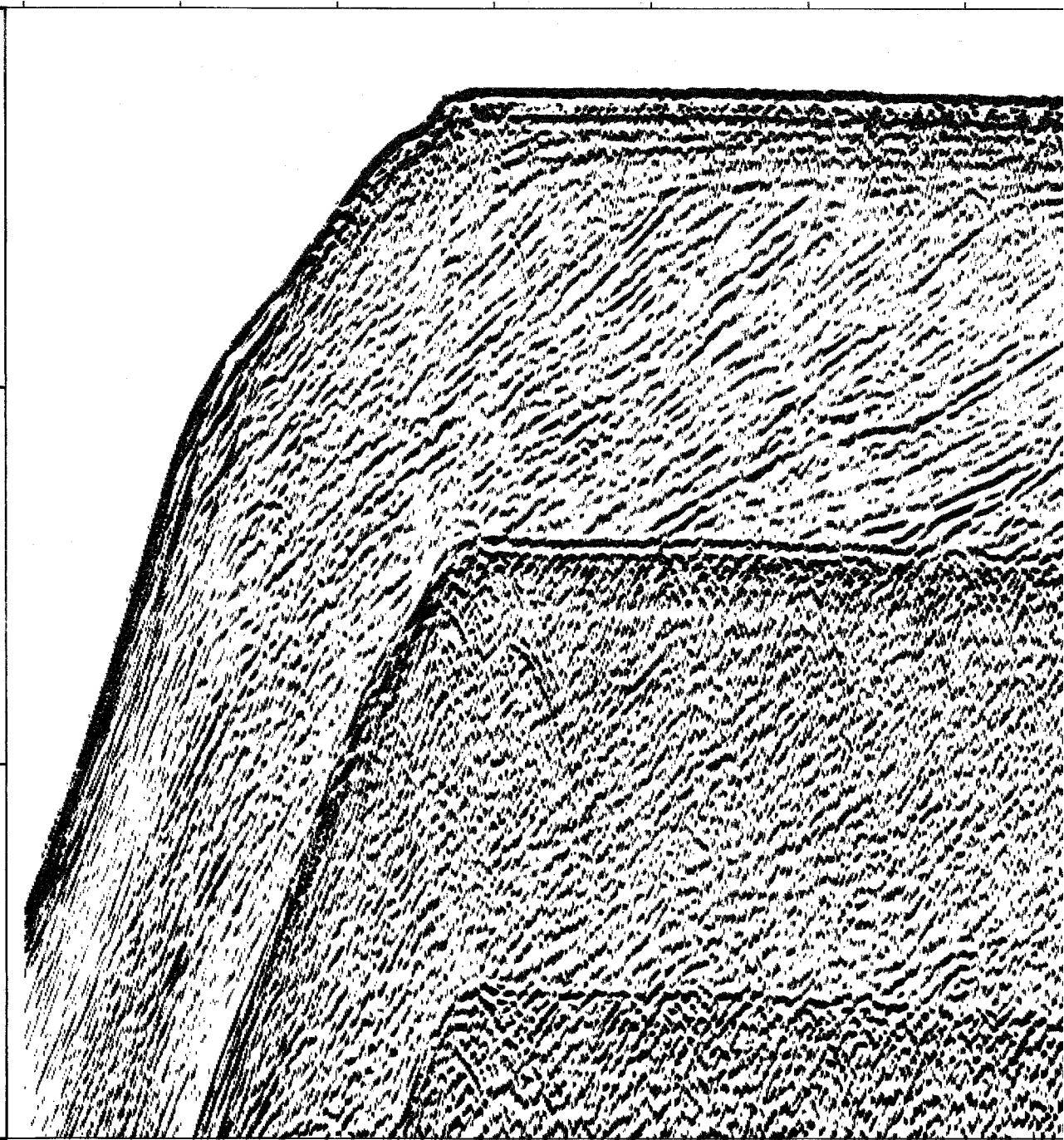
0.5

1.0

1.5

2.0

Two-way travelttime (s)



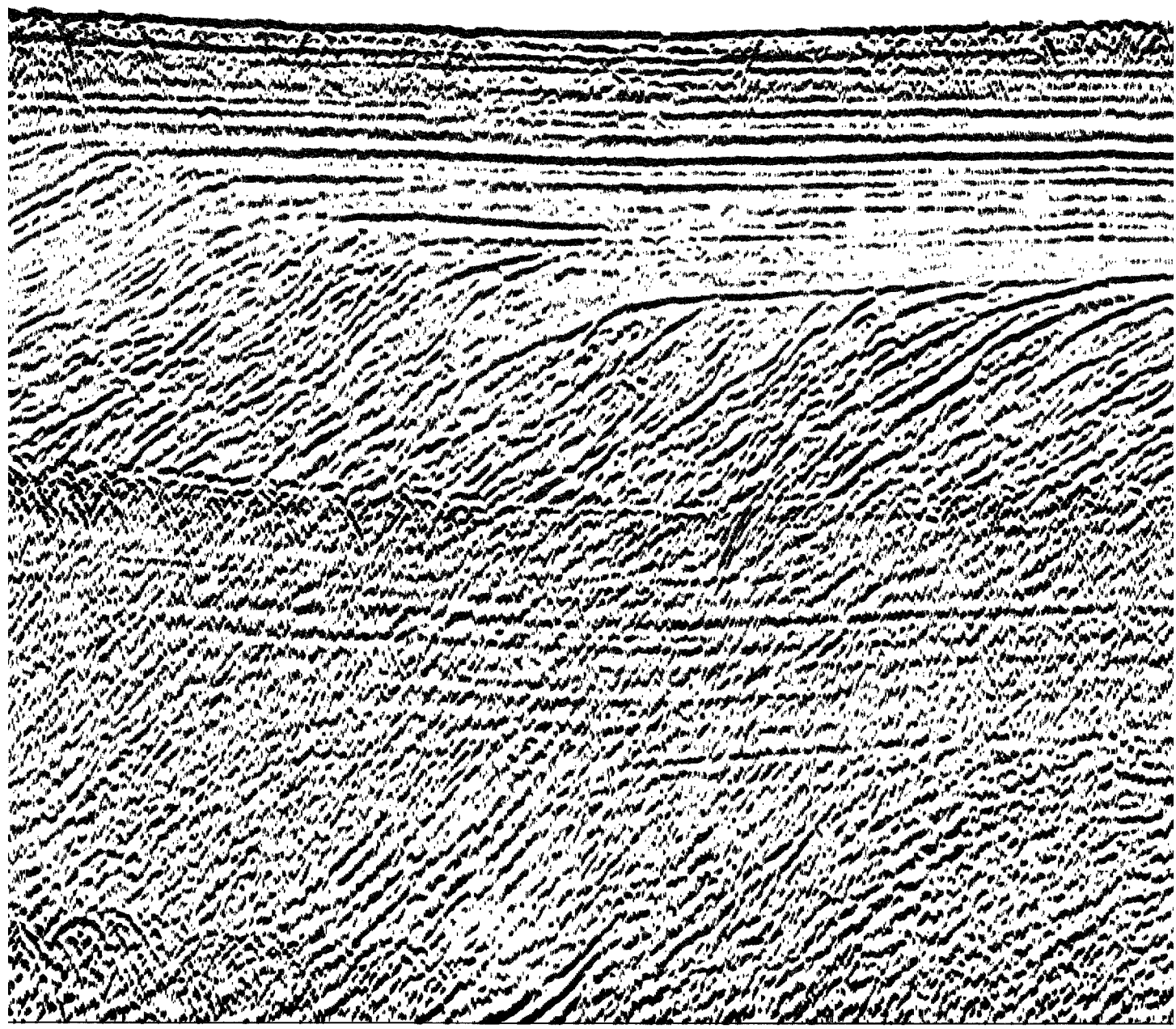
Site 1

800

900

1000

1100



SOUTH-EAST

5 Km

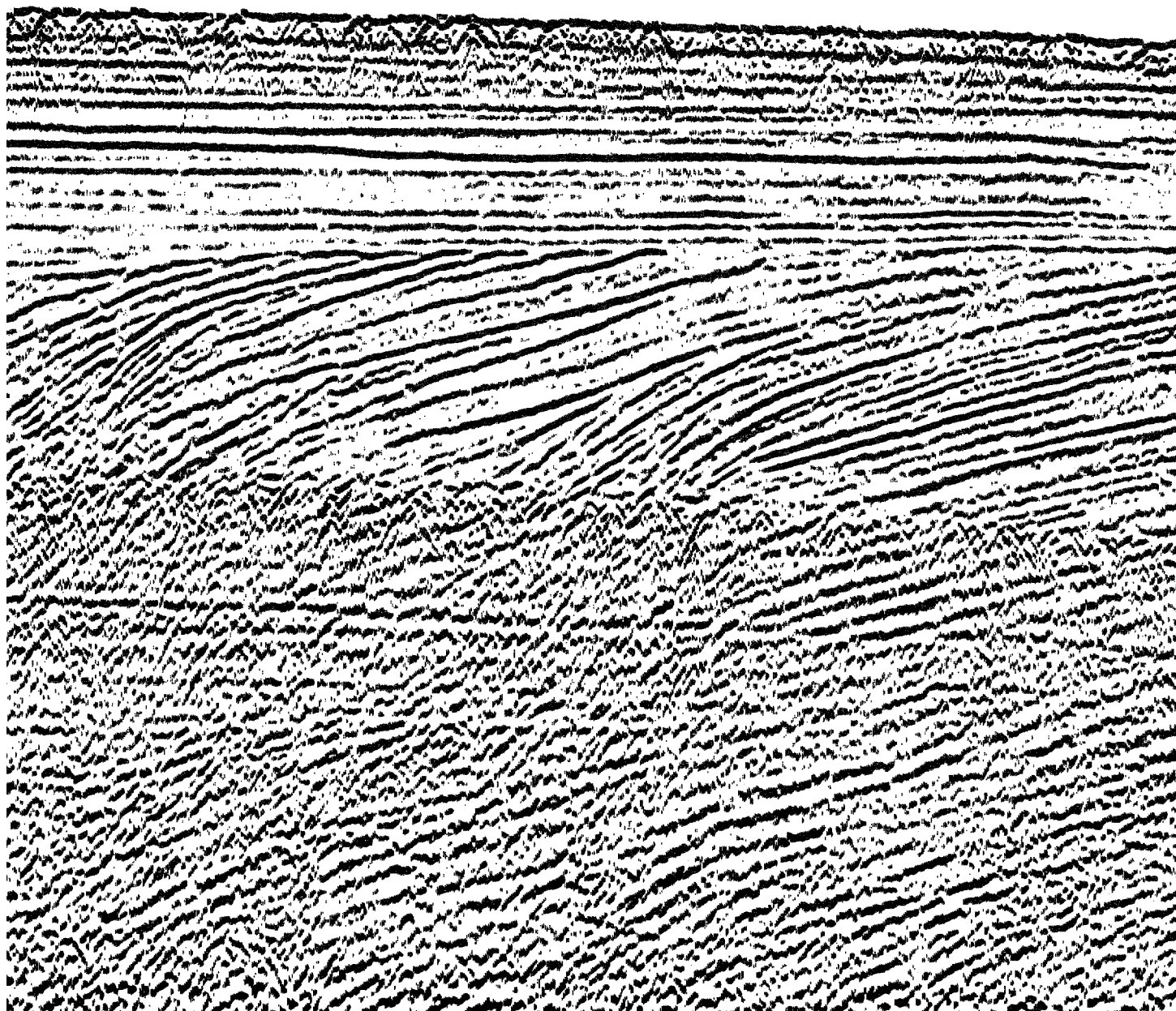
100

1200

1300

1400

1



Site 1103

500

1600

1700

1800

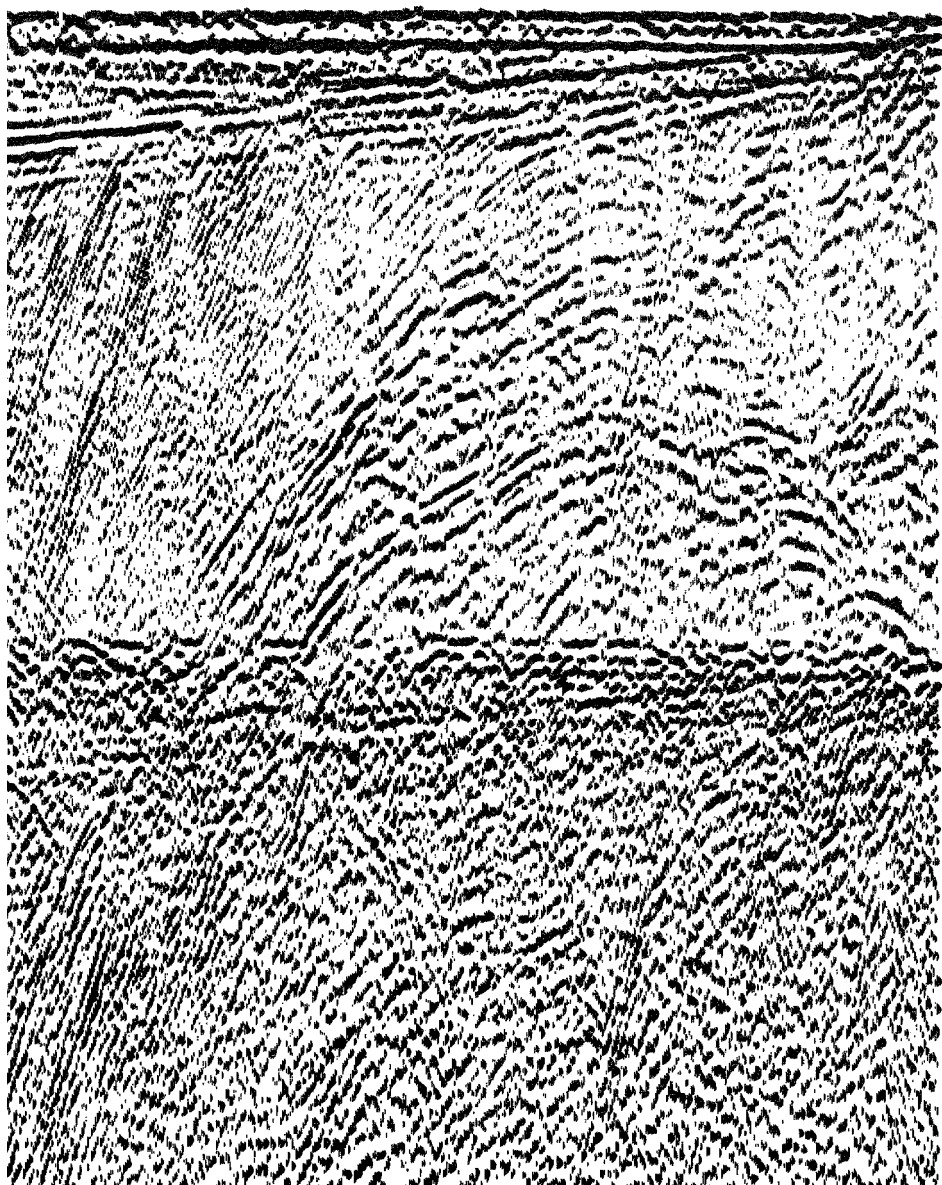


Line I95-152 SP 400-2120

1900

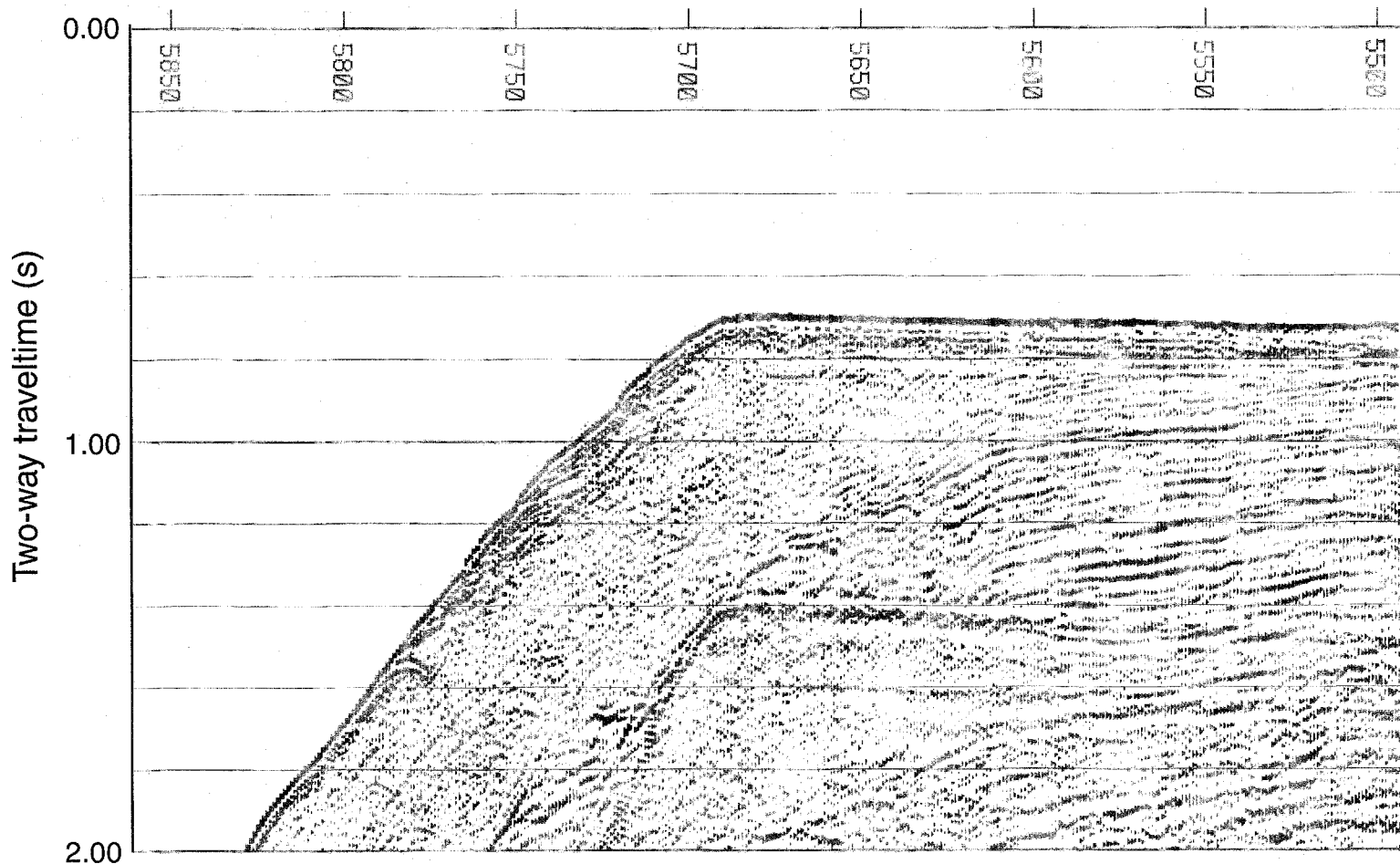
2000

2120



SHPL

NORTH-WEST



Site 1097

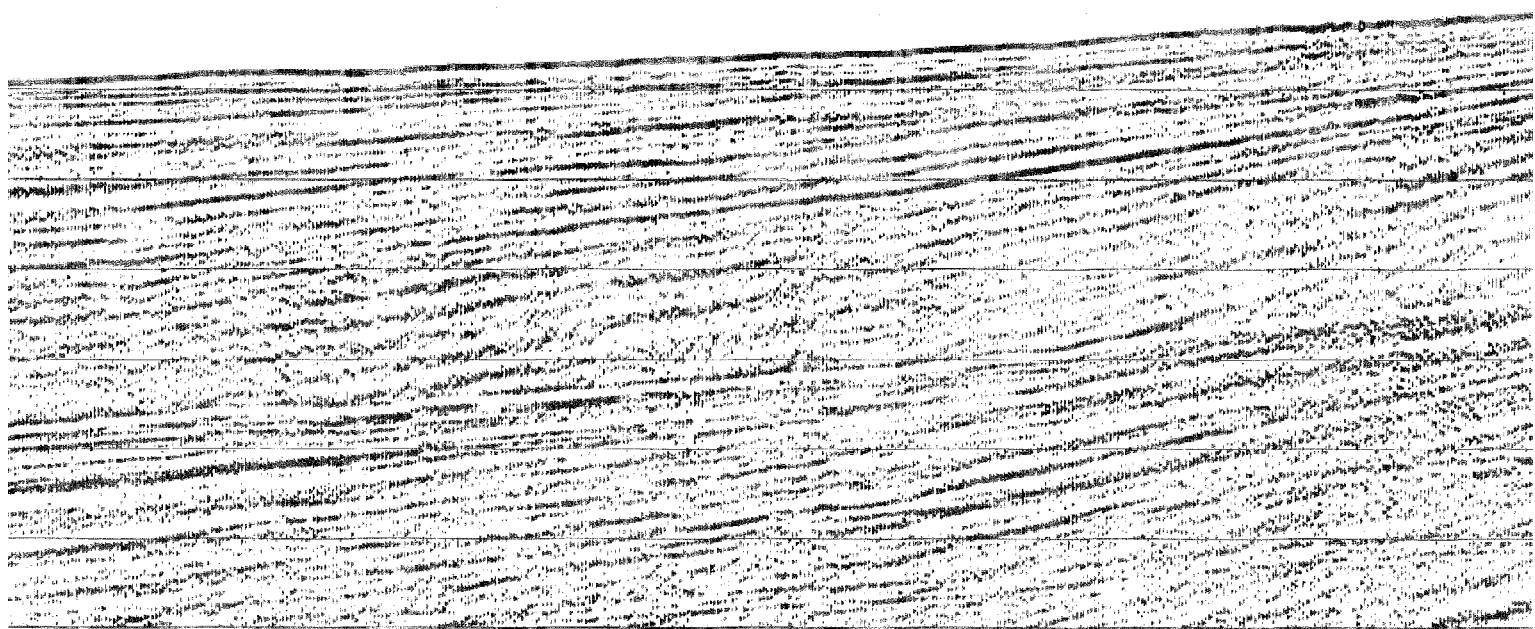
4700
4750
4800
4850
4900
4950
5000
5050
5100
5150
5200
5250
5300
5350
5400
5450

ANTPAC 97 AISM06 FINAL ST

10 Km

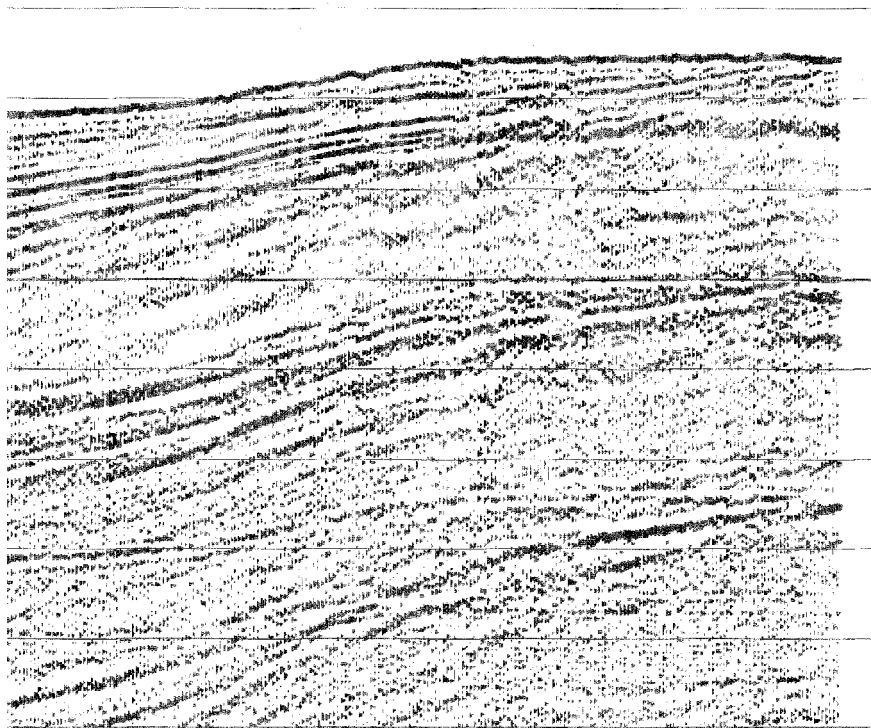
3900
3950
4000
4050
4100
4150
4200
4250
4300
4350
4400
4450
4500
4550
4600
4650

ACK

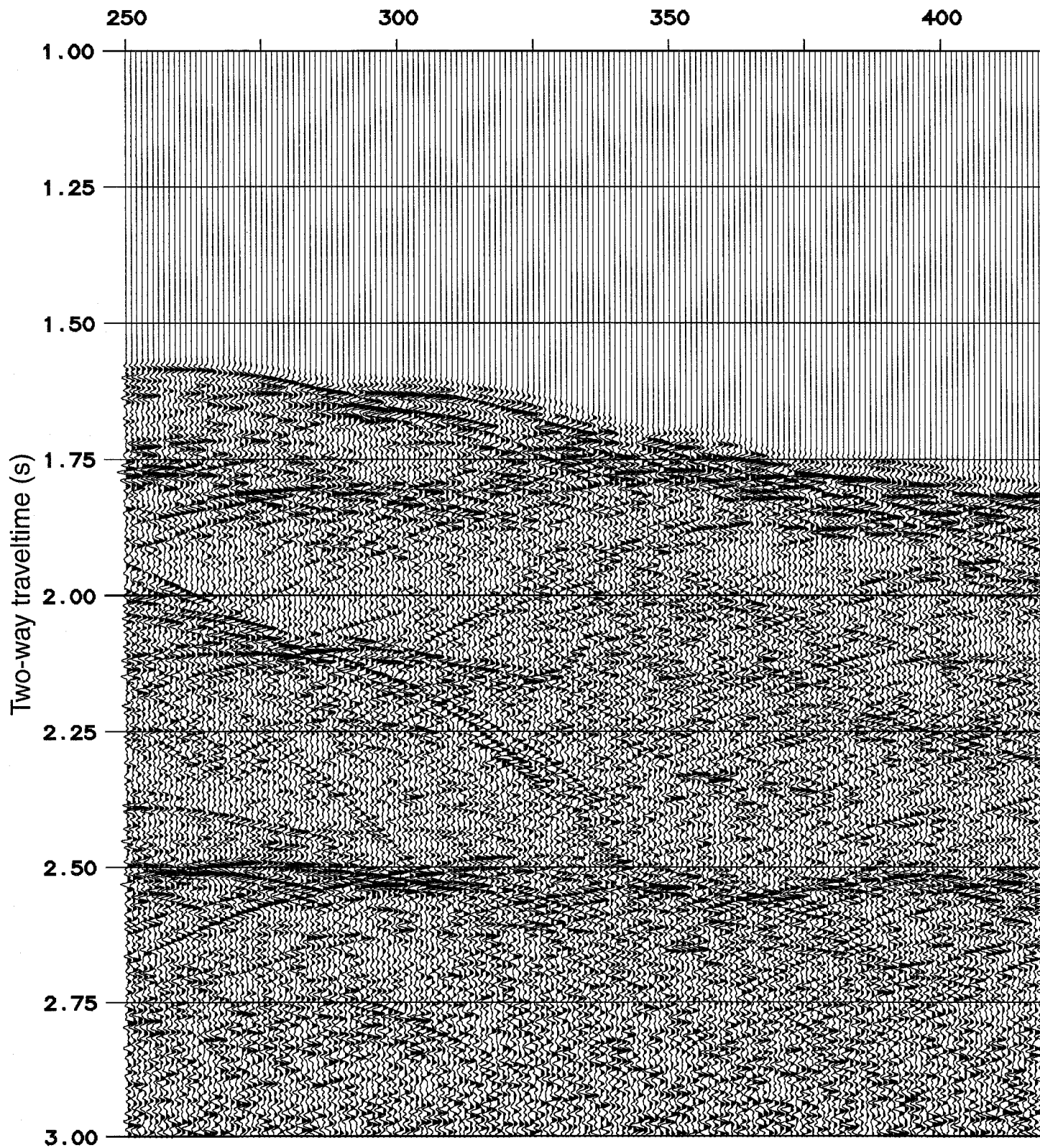


SOUTH-EAST

3850
3800
3750
3700
3650
3600
3550
3500
3450



Line I97H-221G SP 250-1025



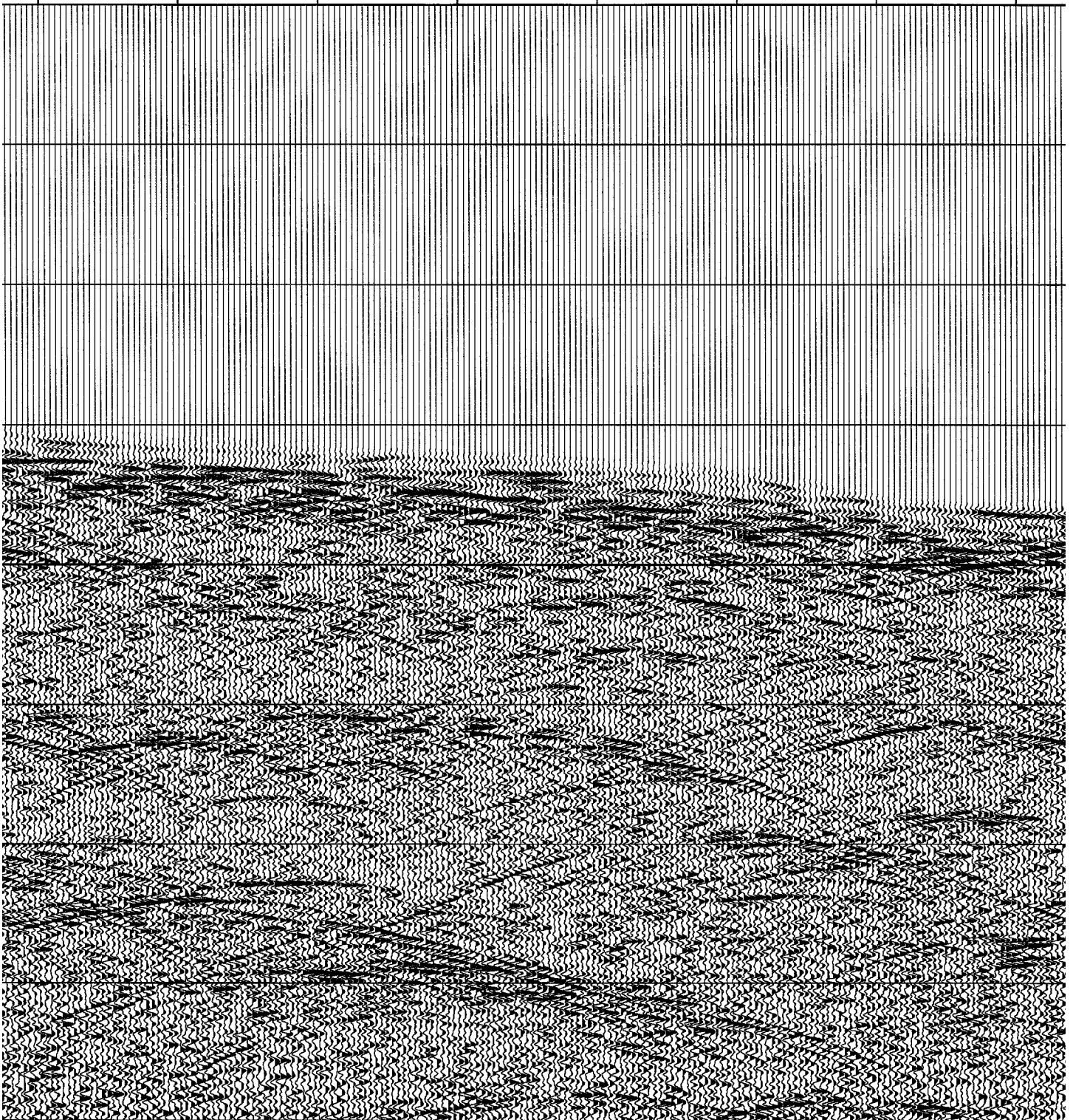
1 Km

450

500

550

600



EAST

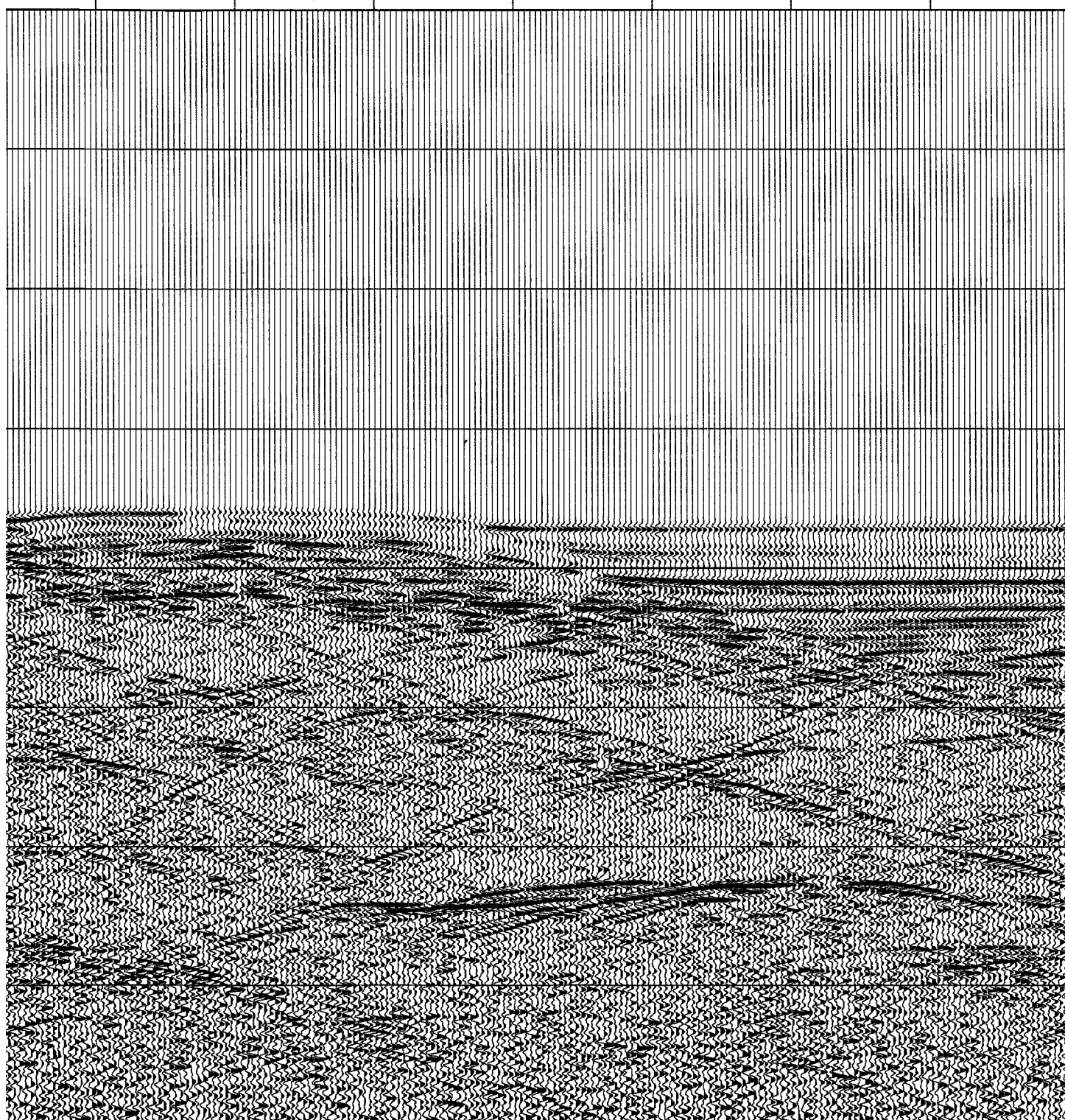
Site

650

700

750

8



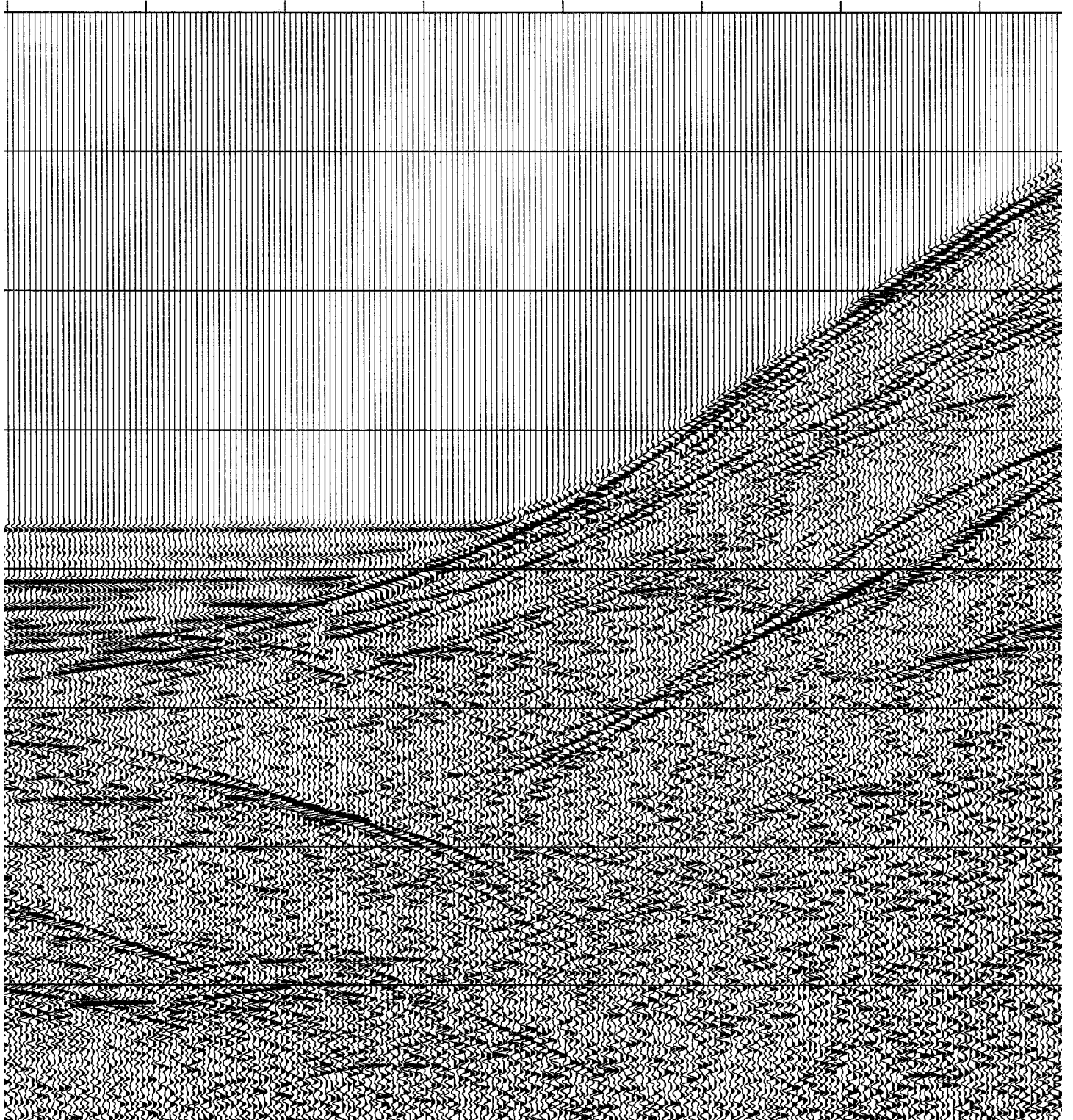
1099

00

850

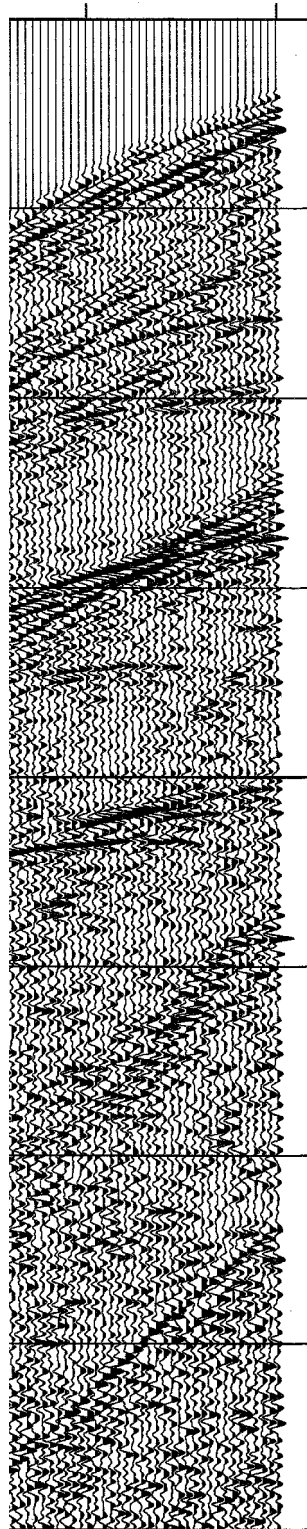
900

950



1000

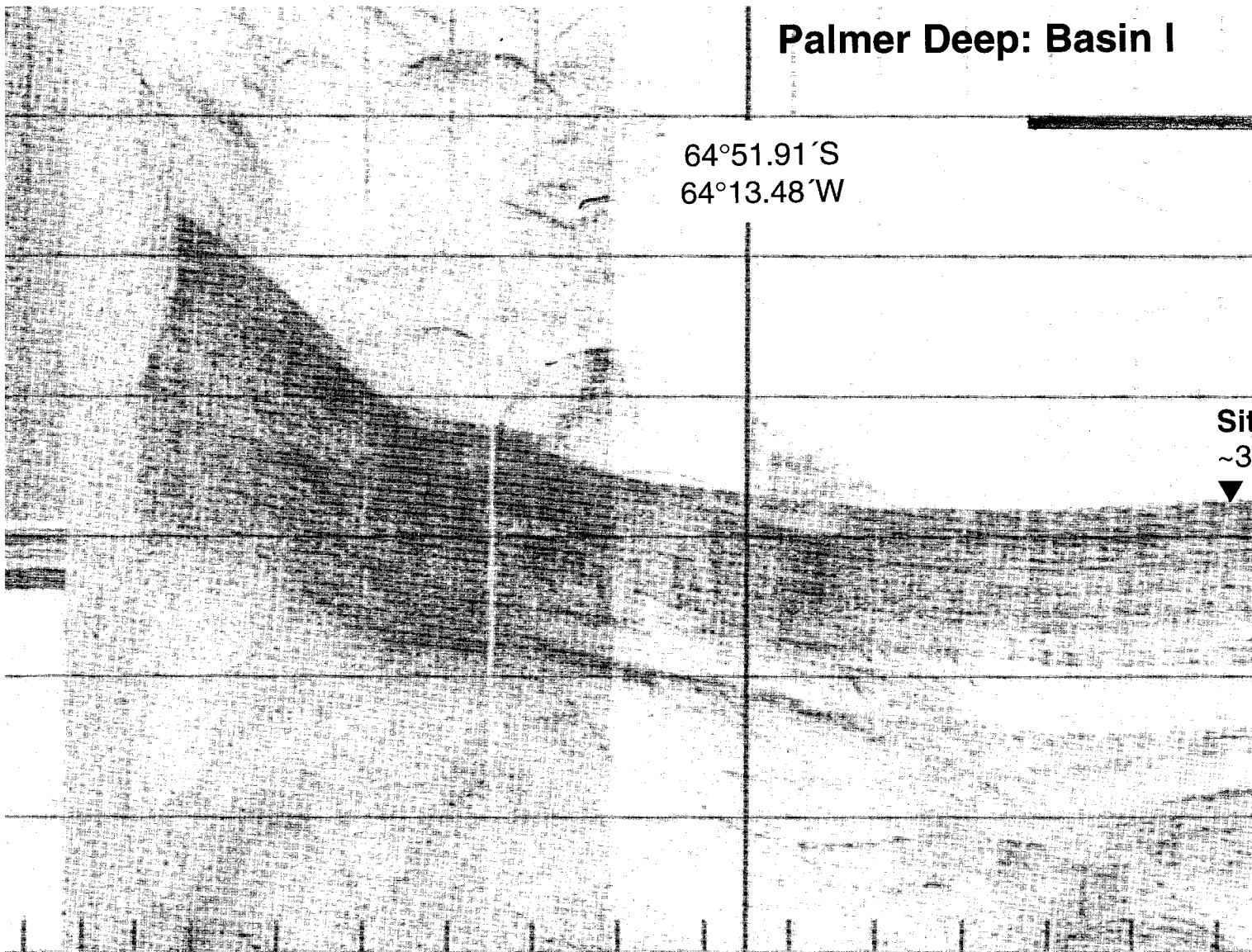
1025



Palmer Deep: Basin I

64°51.91'S
64°13.48'W

Sit
~3
▼



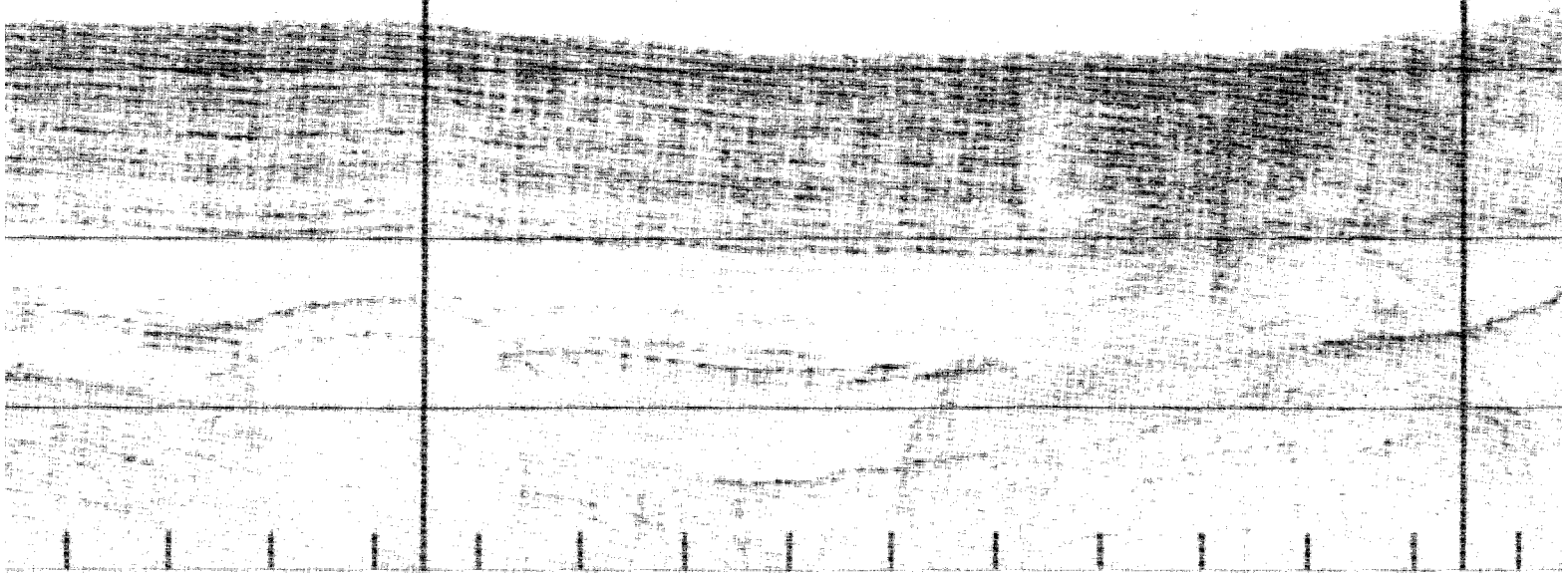
SW <-----> NE

1 kilometer

64°50.70'S
64°10.00'W

25 ms

Line 1098
100 m to southeast



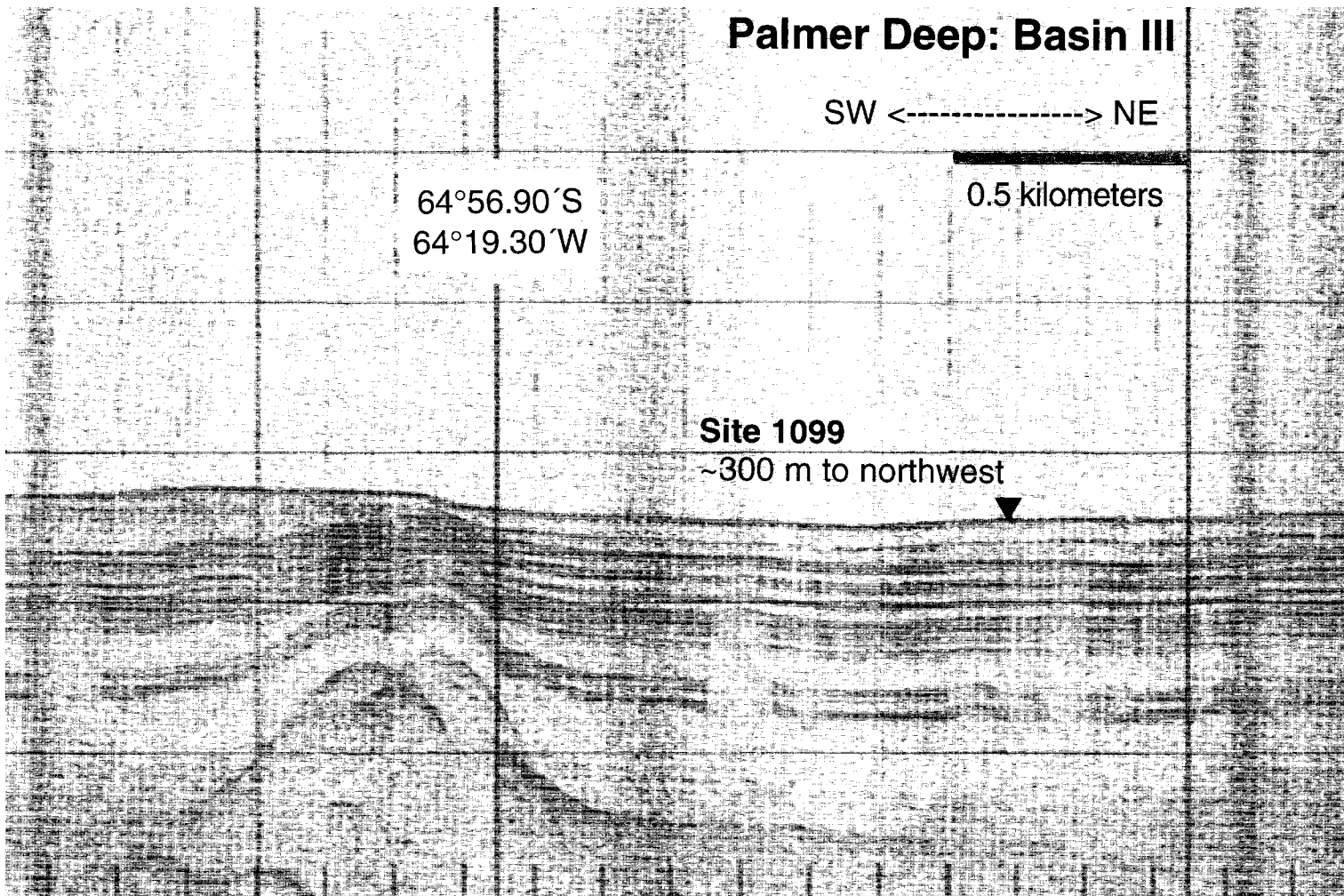
Palmer Deep: Basin III

SW <-----> NE

64°56.90' S
64°19.30' W

0.5 kilometers

Site 1099
~300 m to northwest



64°56.27'S
64°17.71'W

25 ms