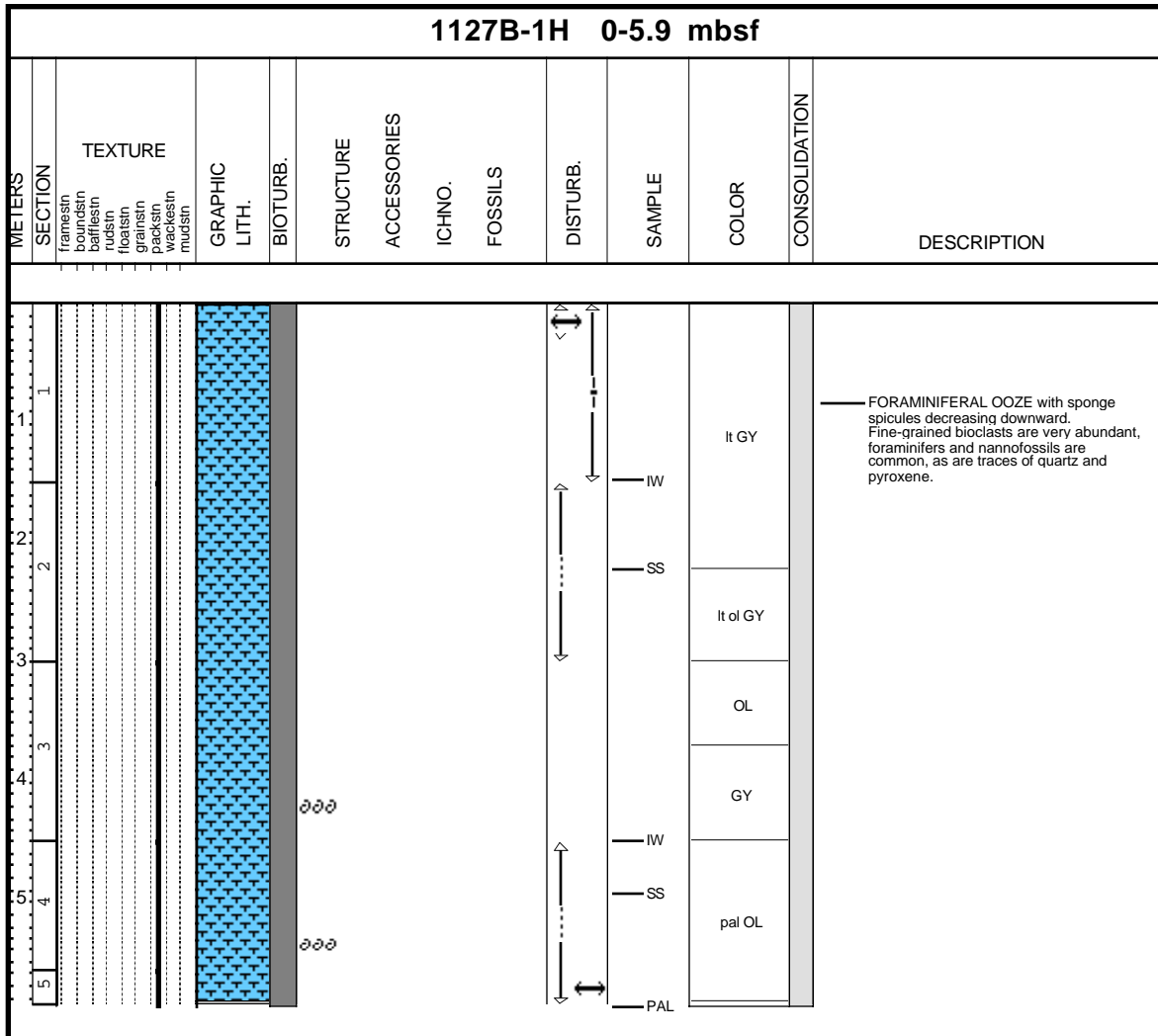
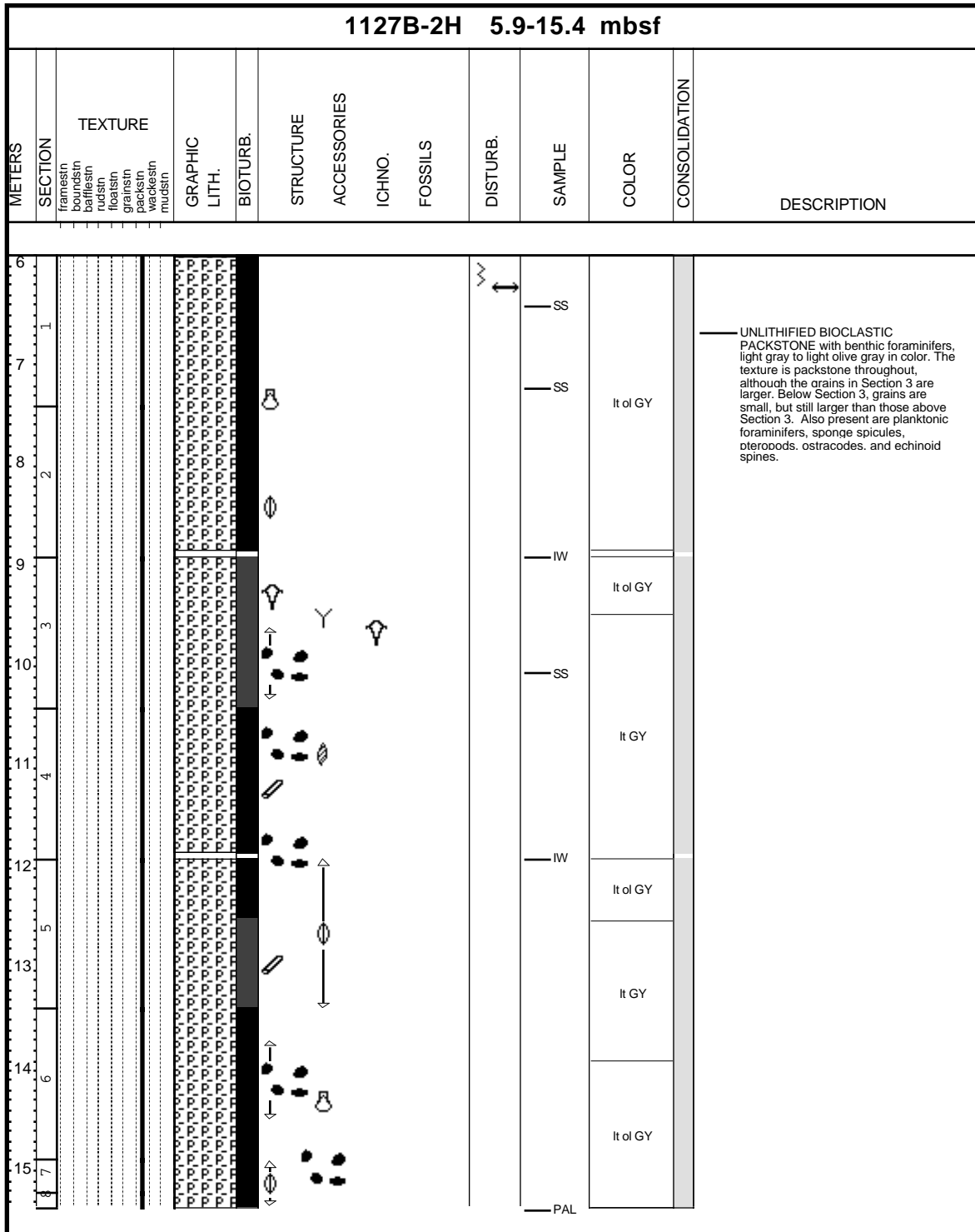


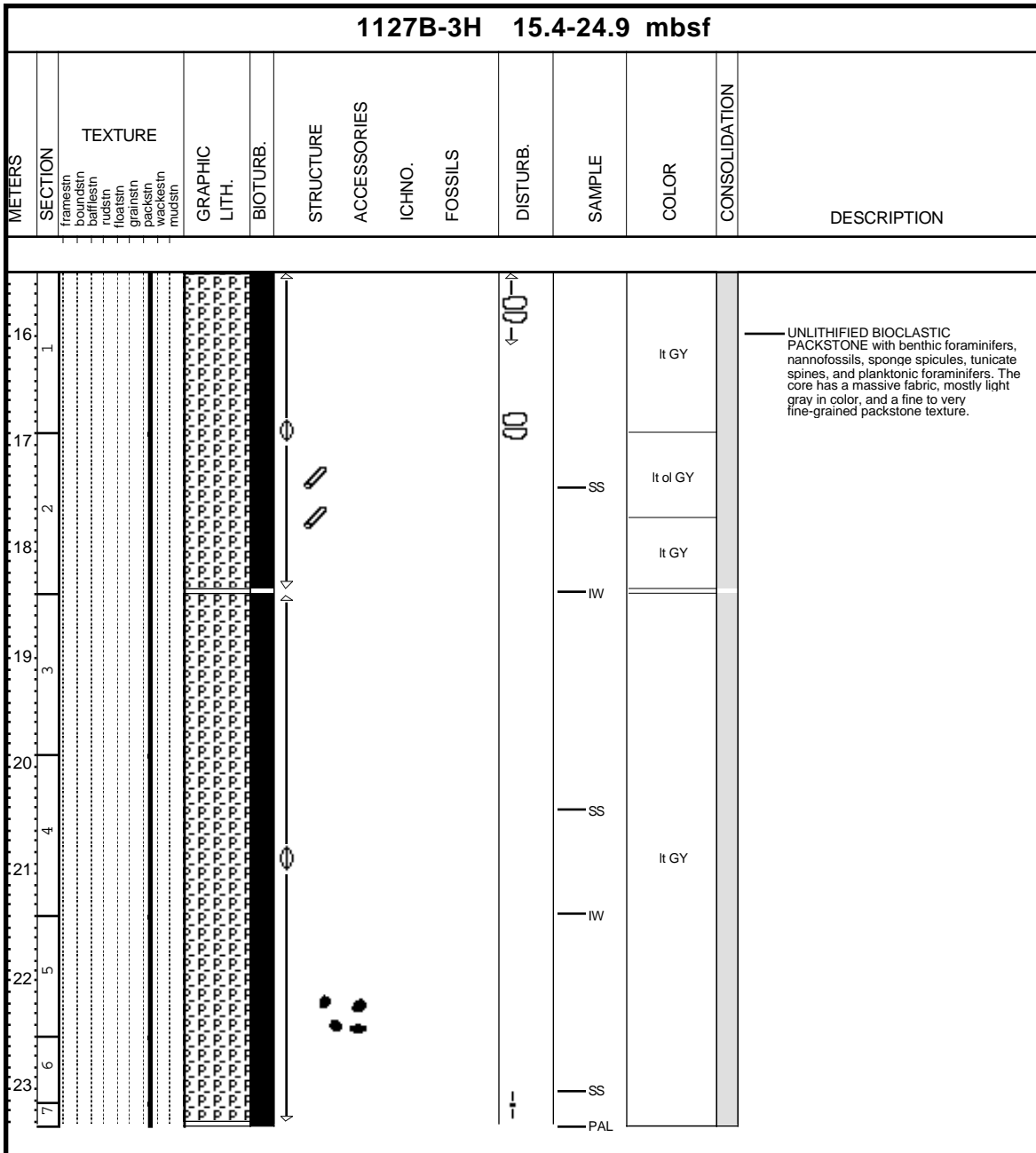
Core Photo



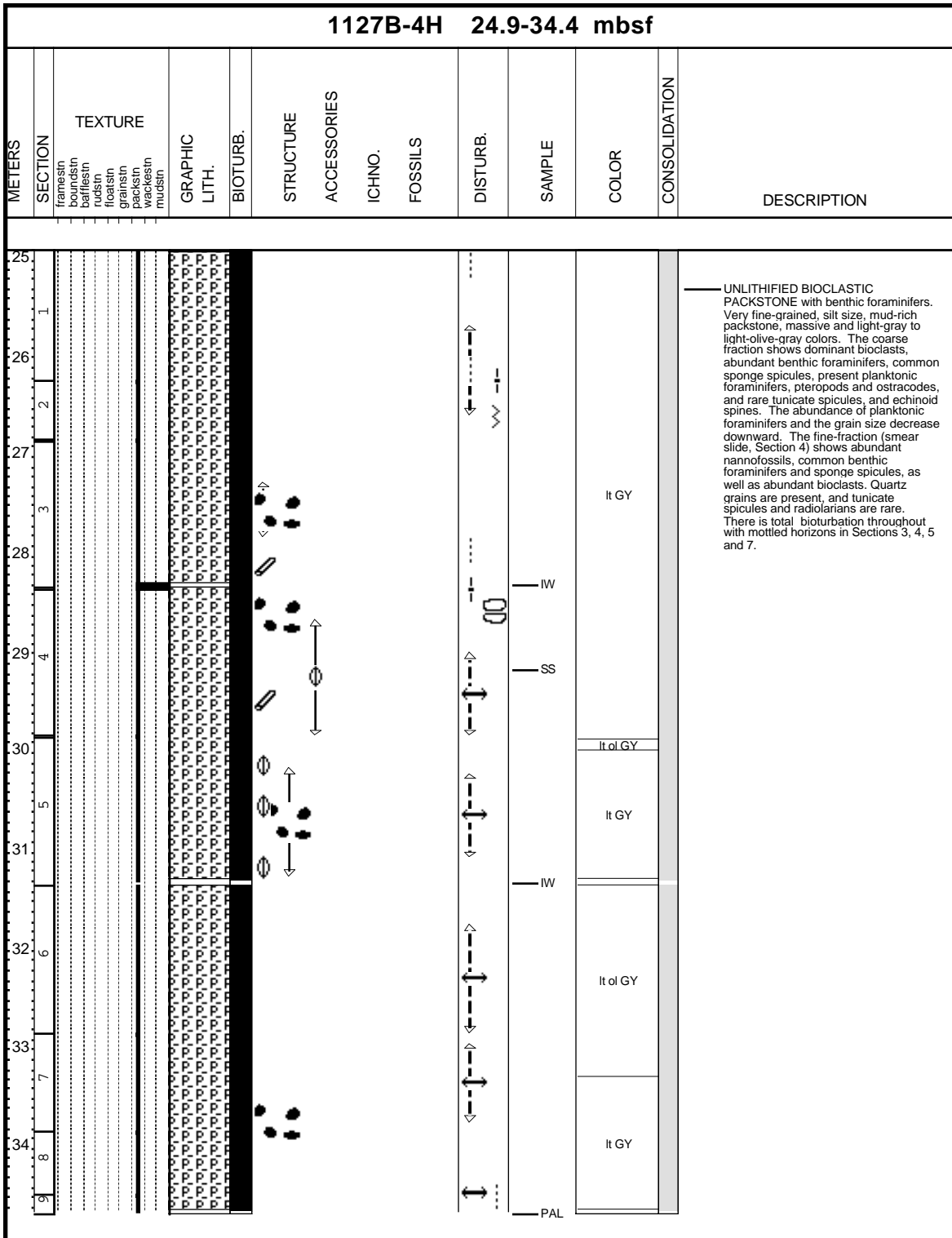
Core Photo



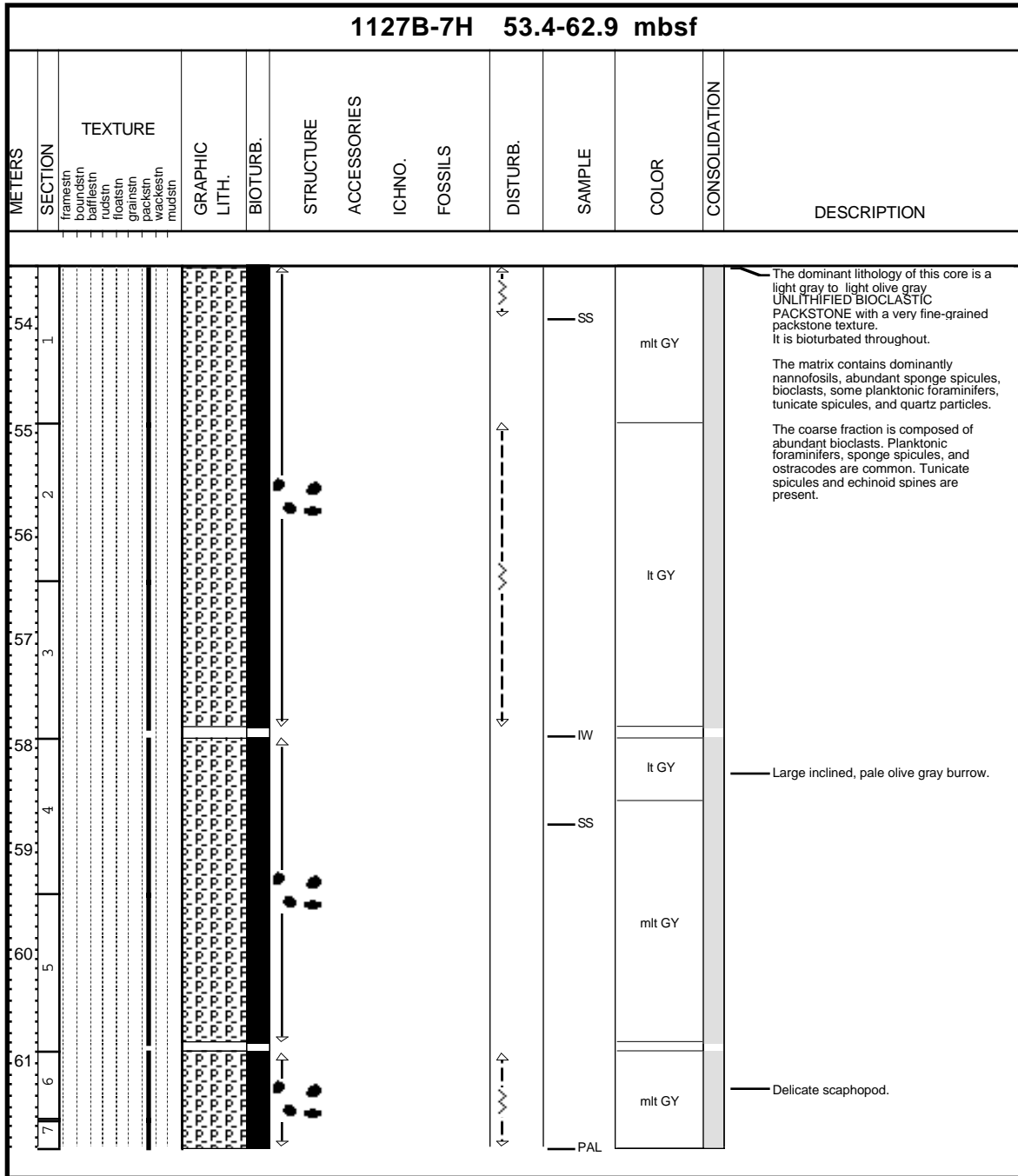
Core Photo



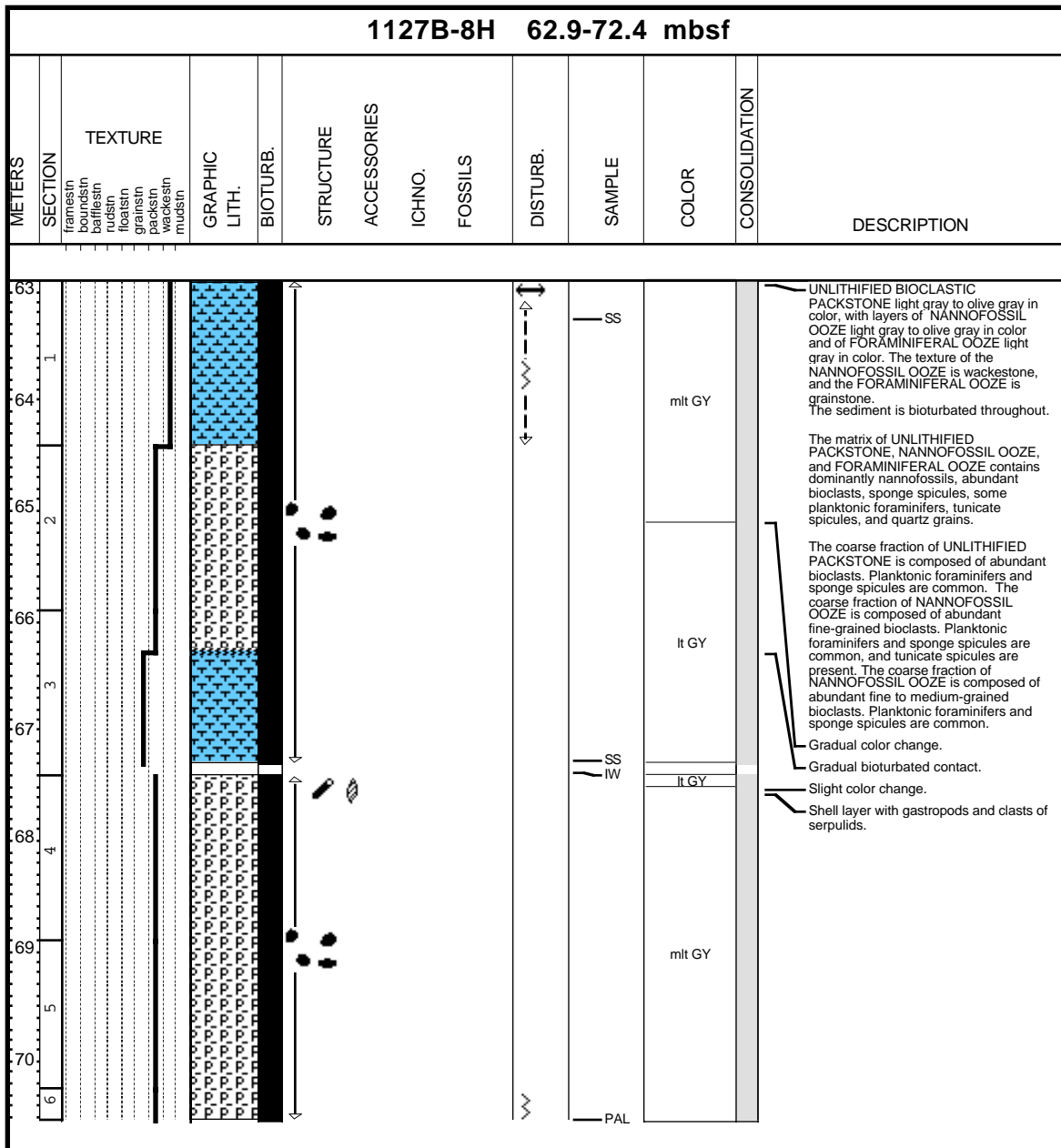
Core Photo



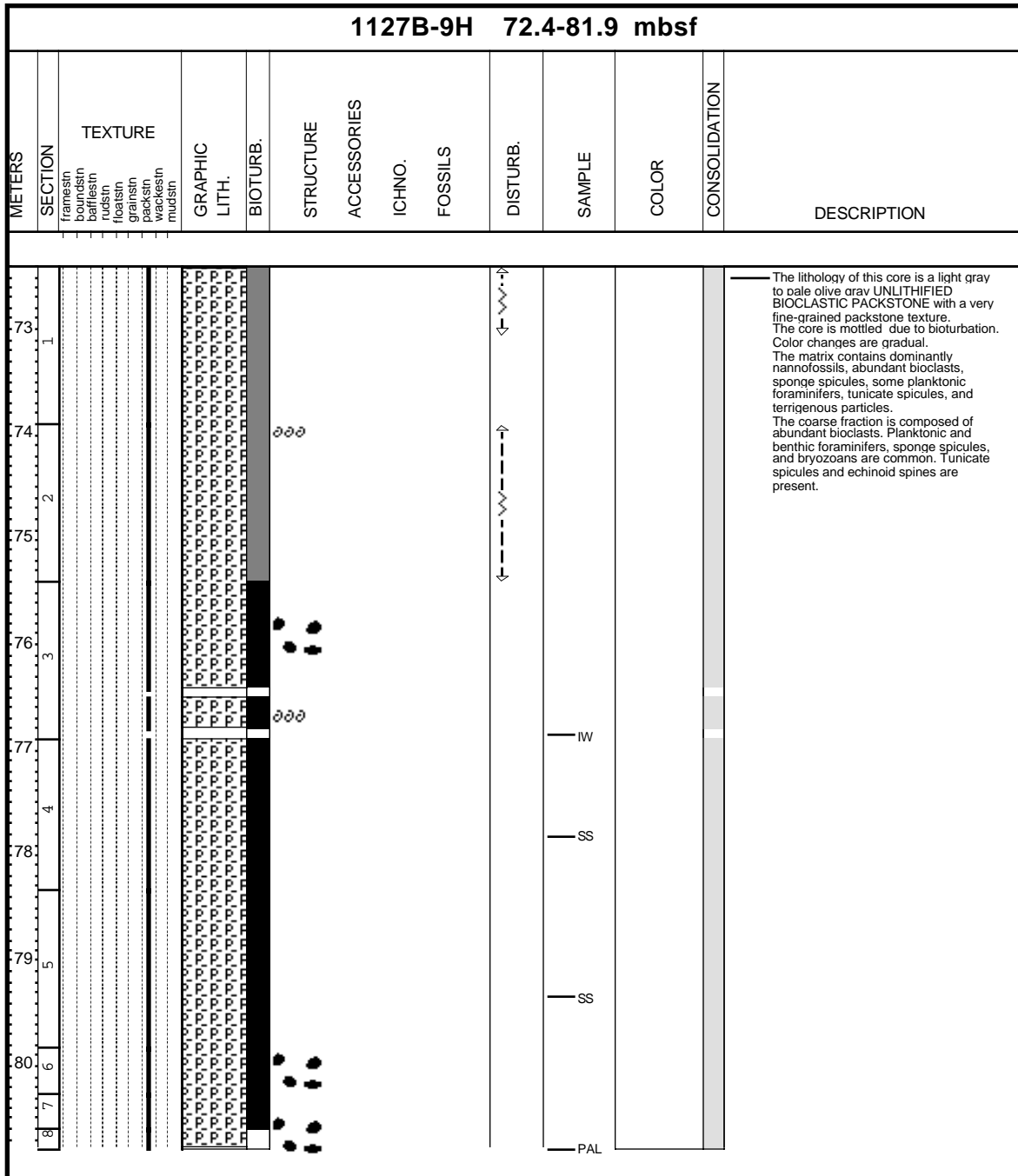
Core Photo



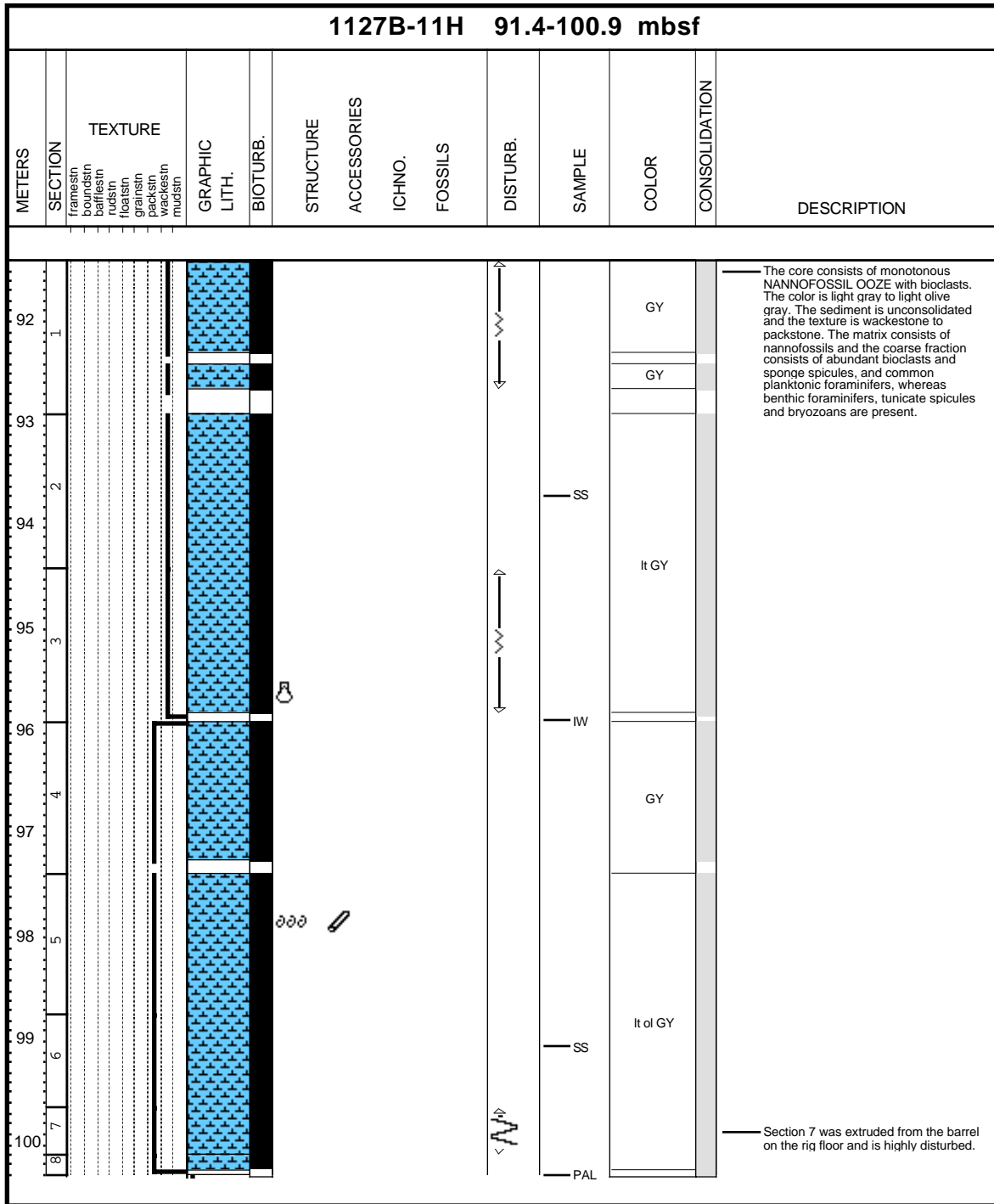
Core Photo



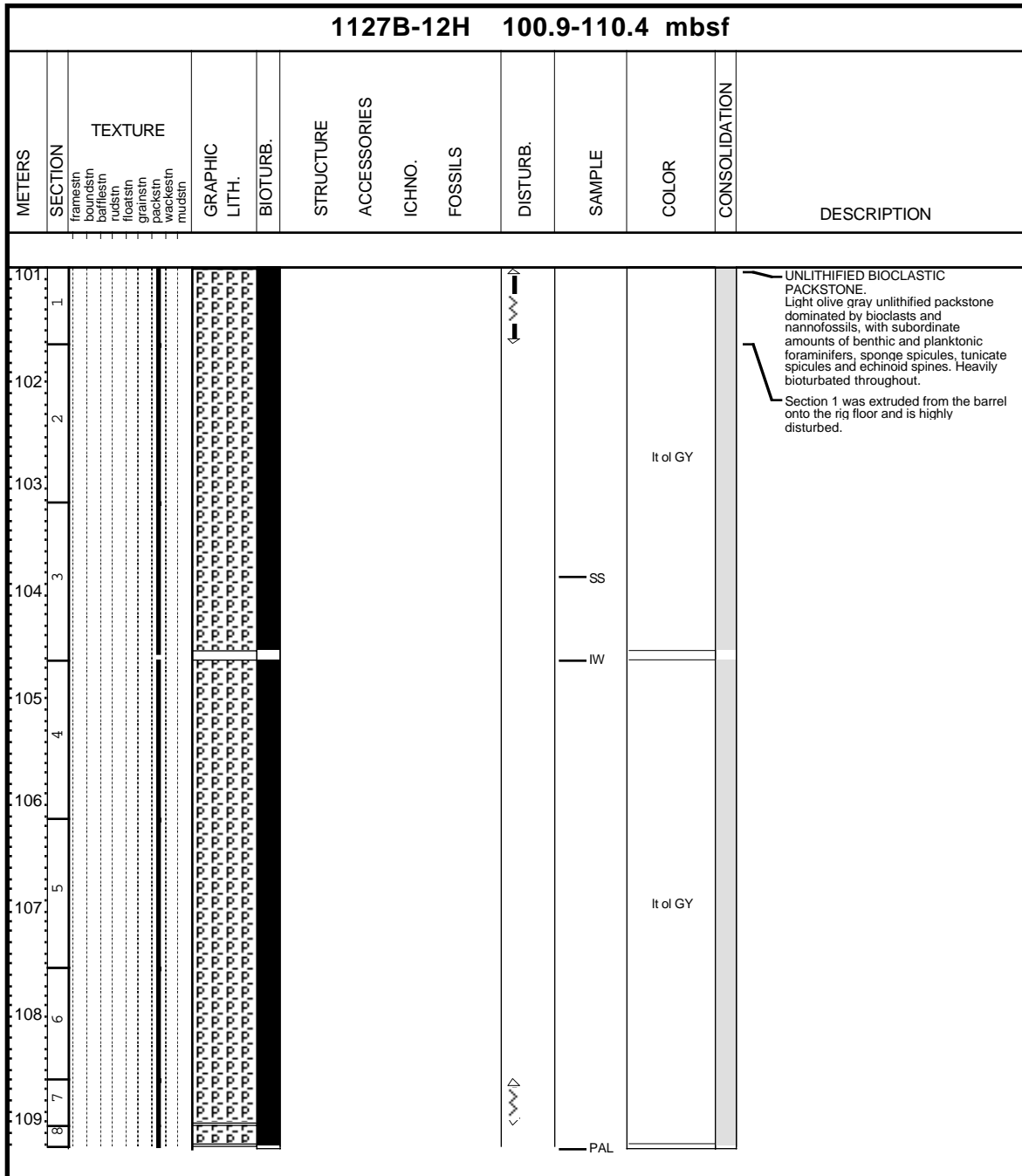
Core Photo



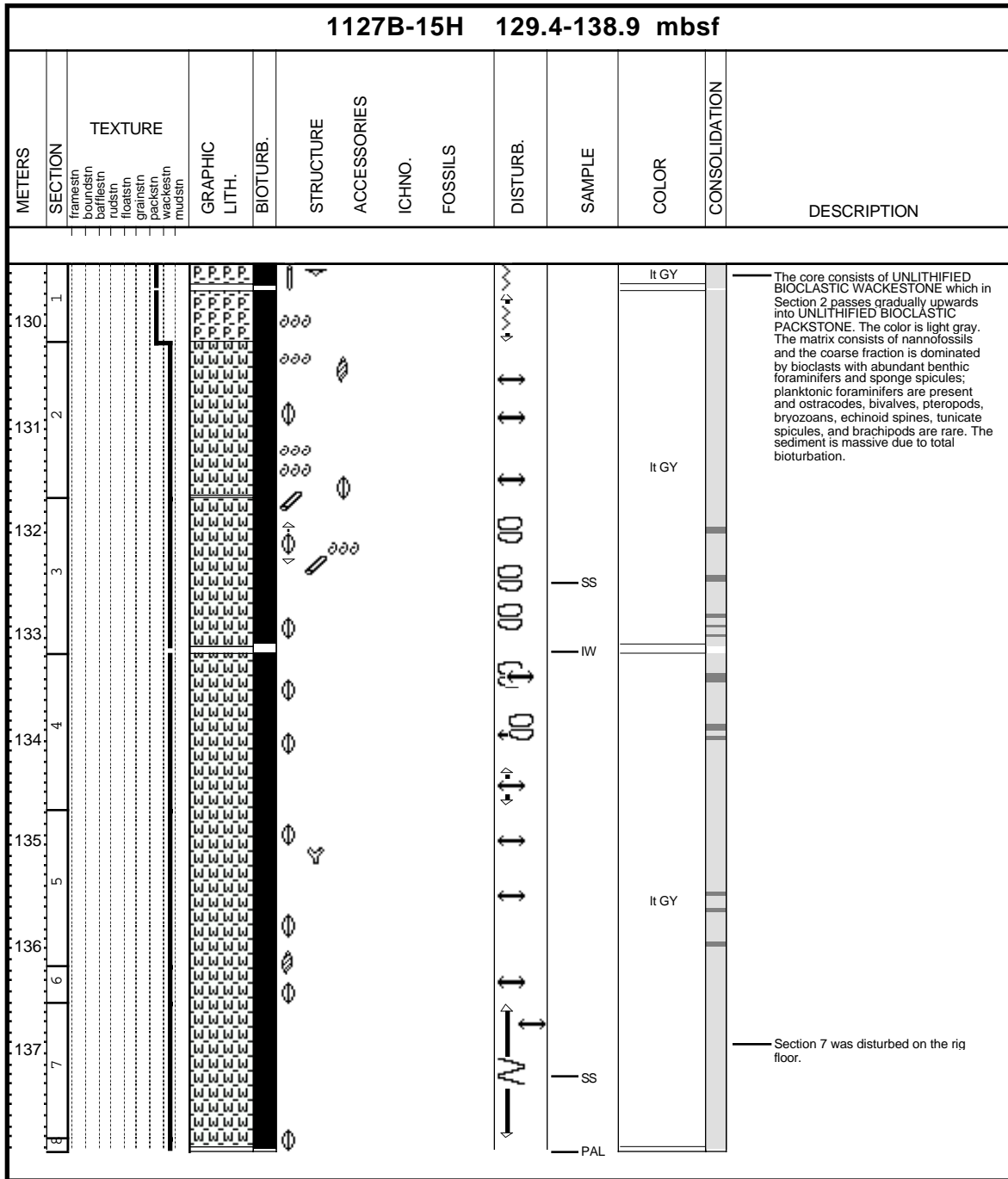
Core Photo



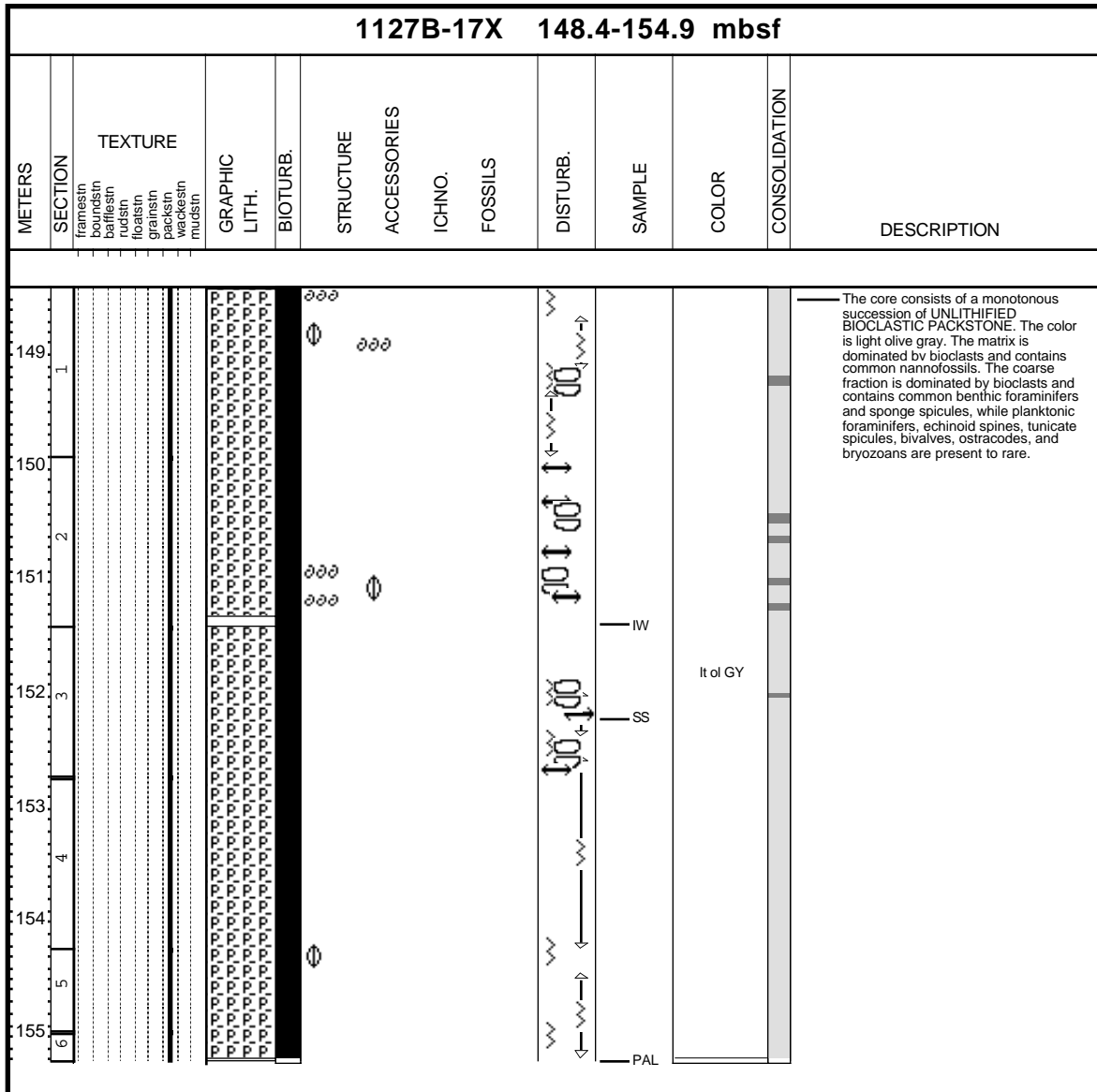
Core Photo



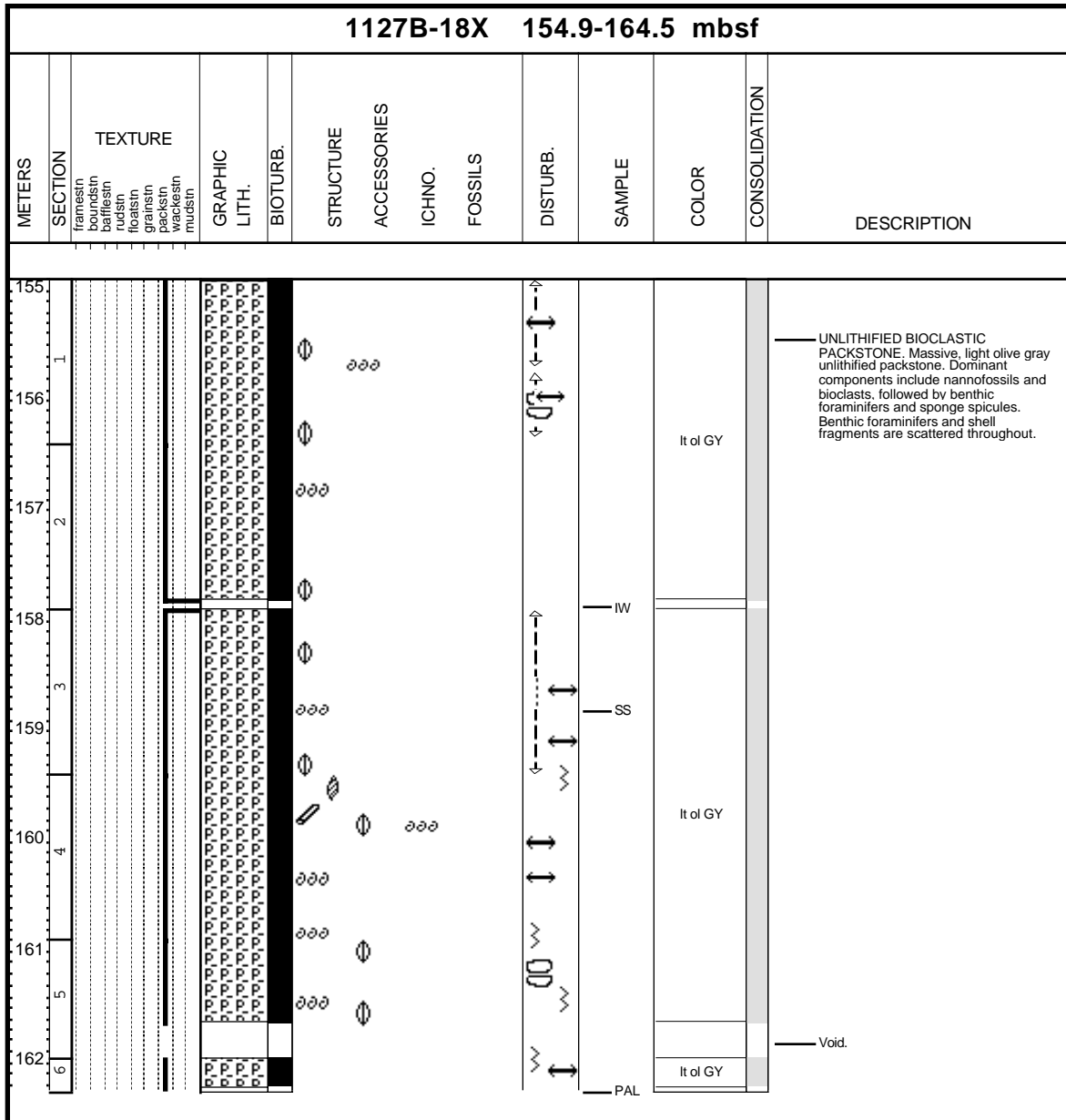
Core Photo



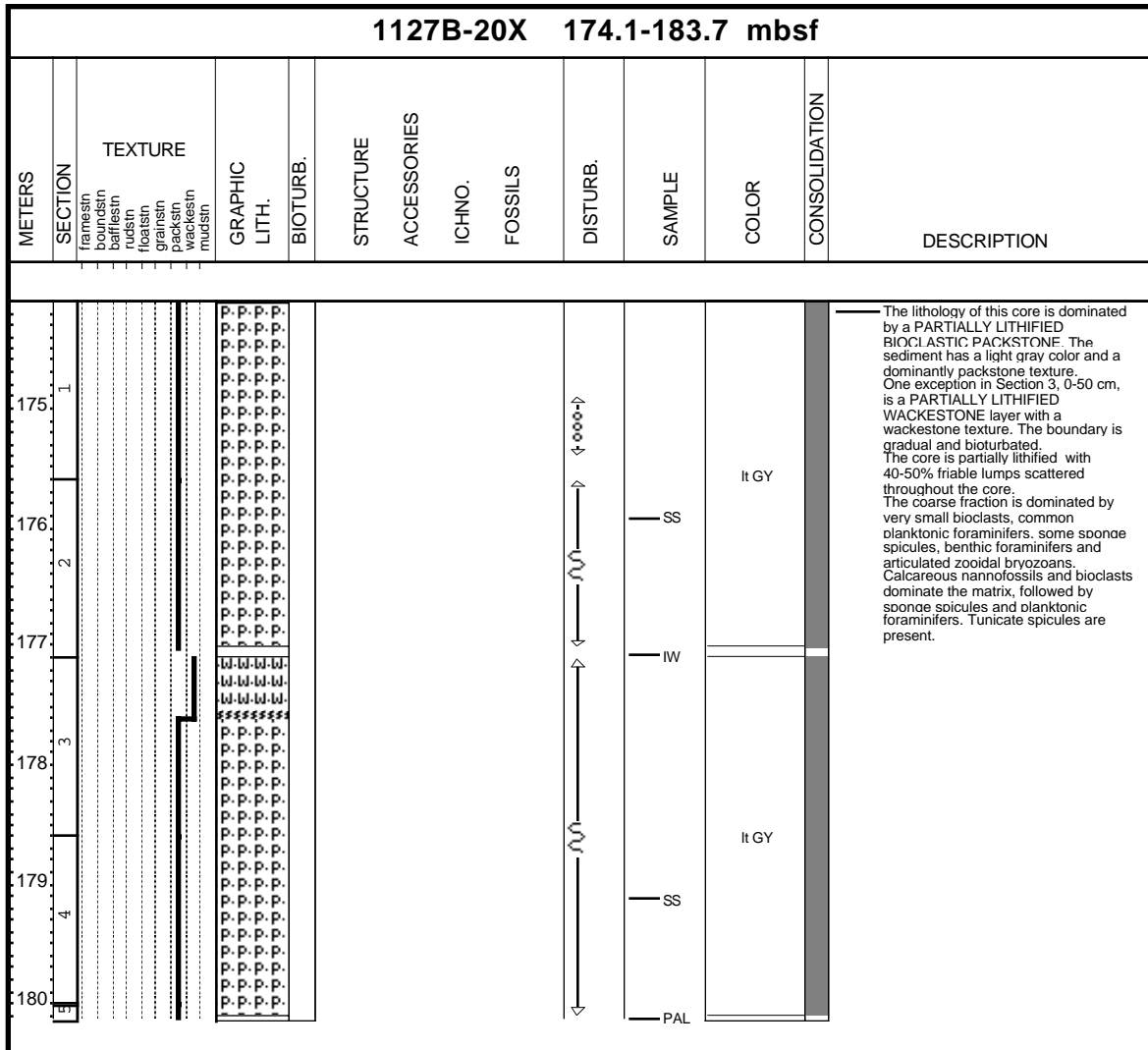
Core Photo



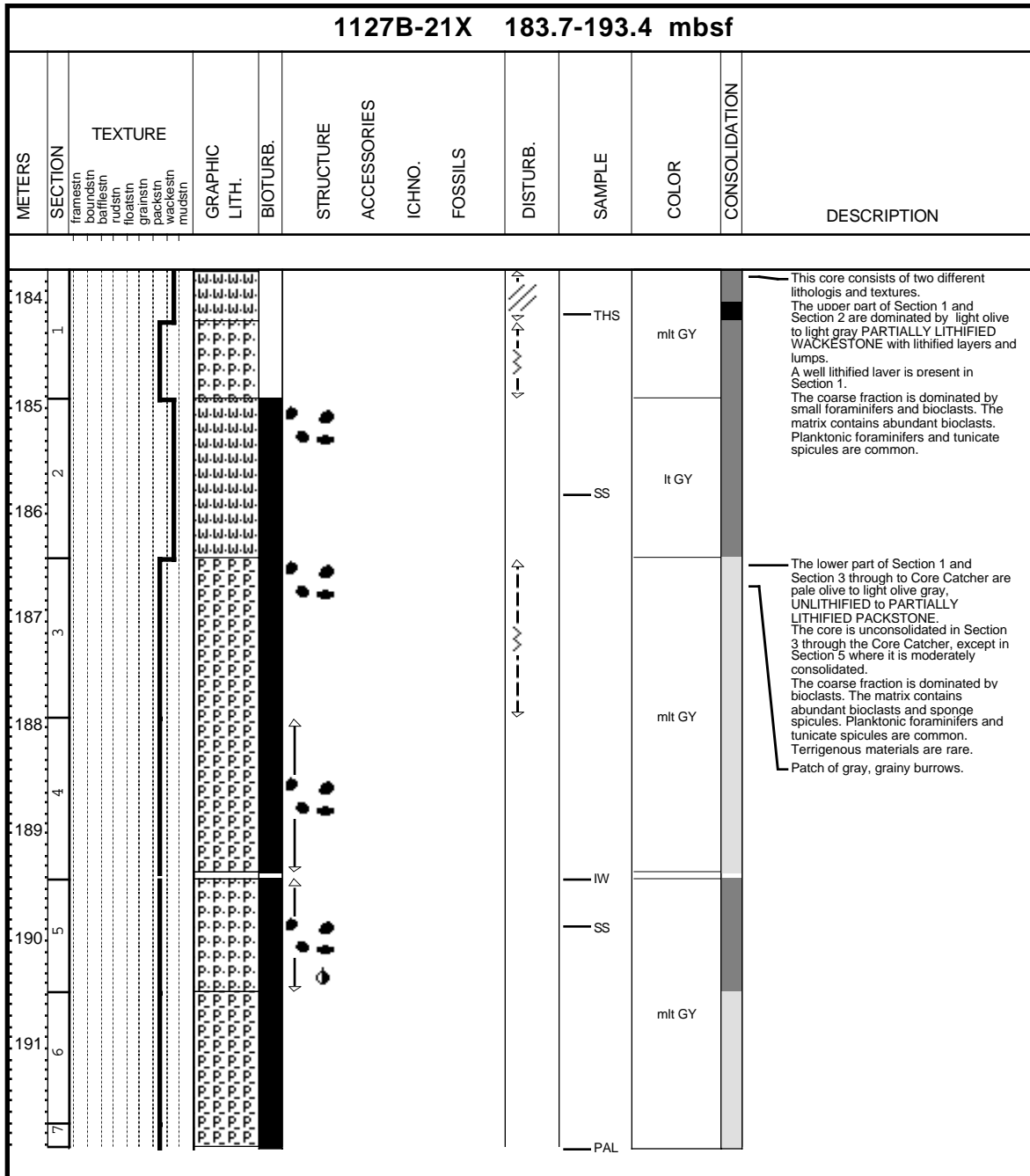
Core Photo



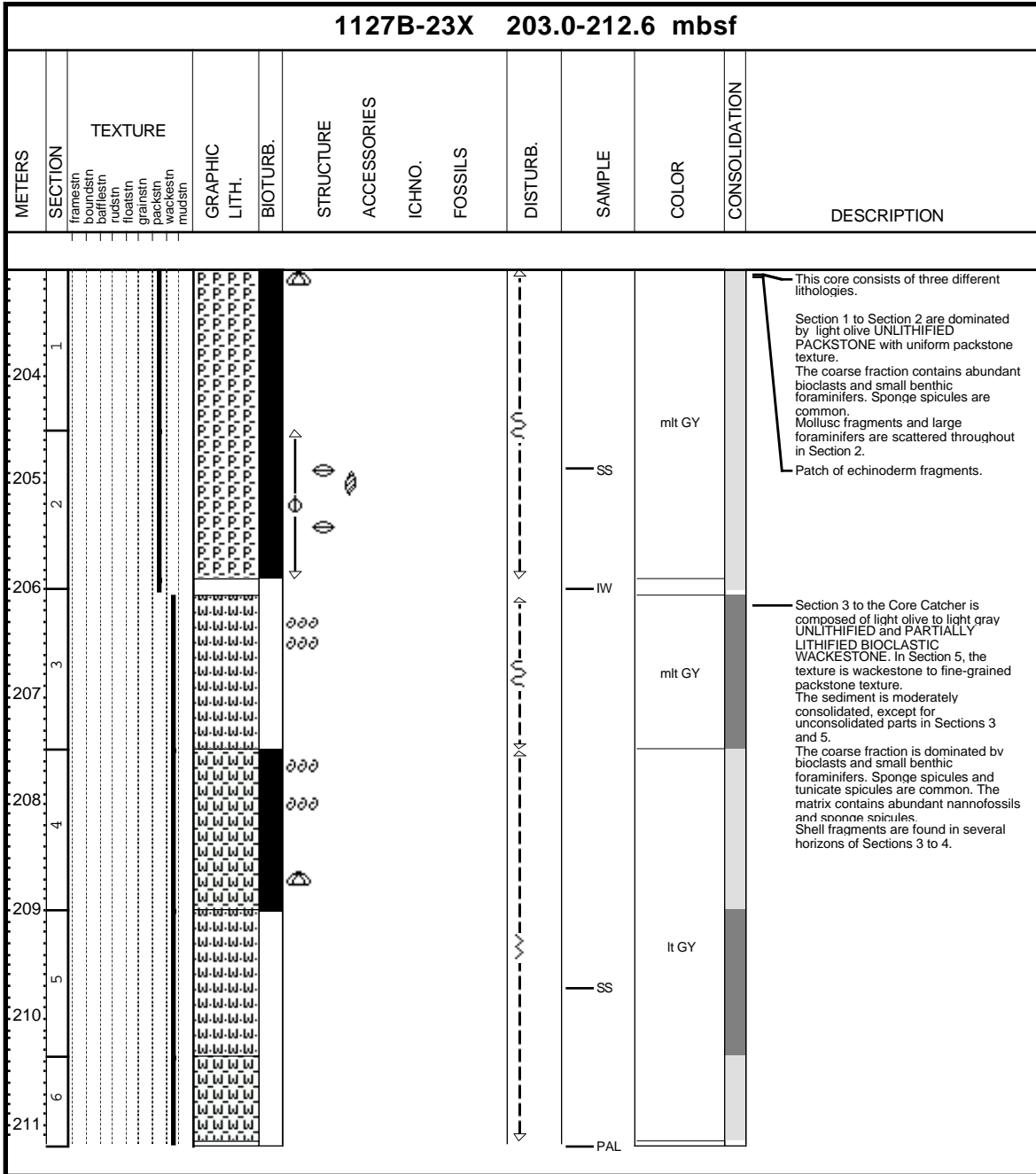
Core Photo



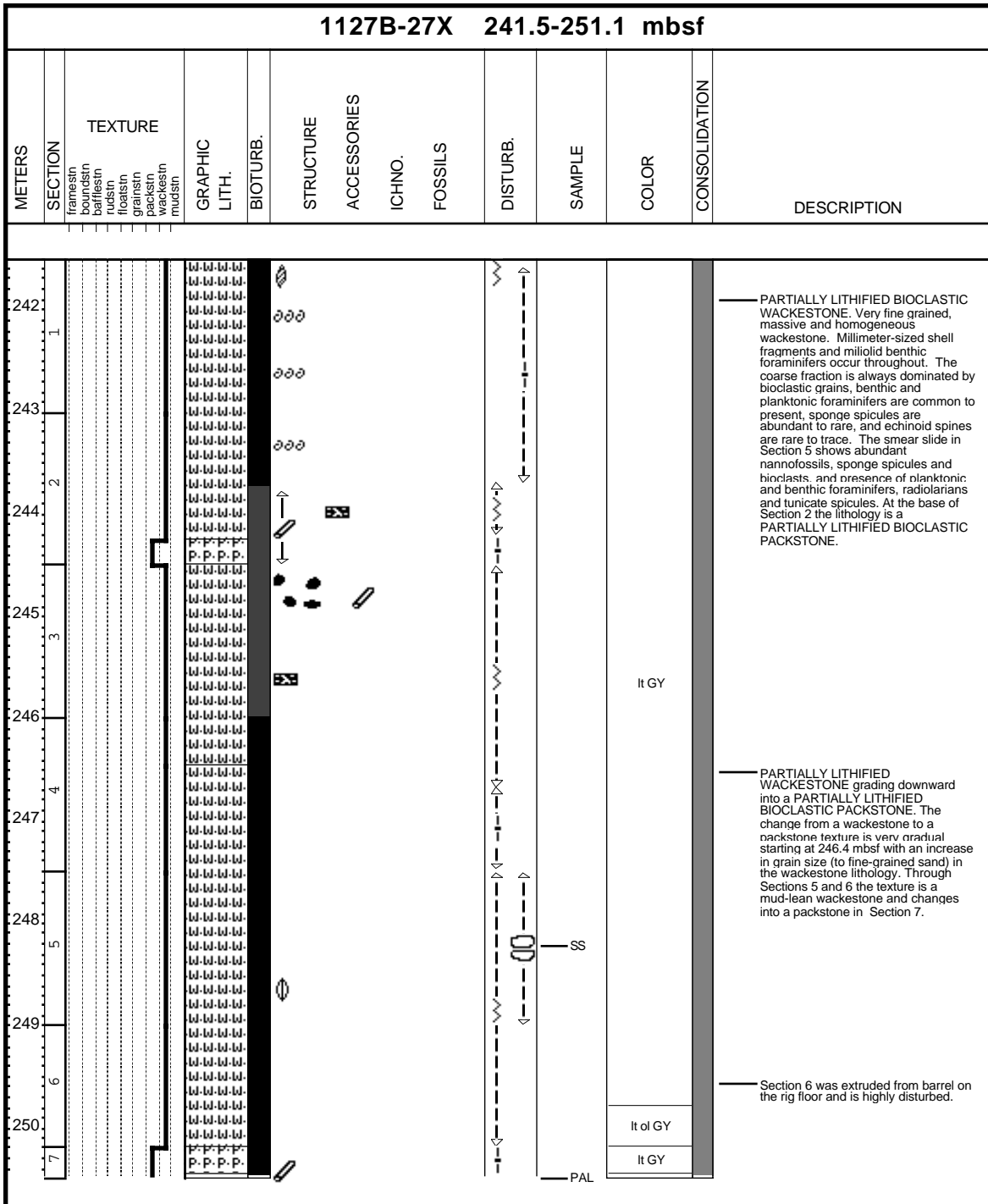
Core Photo



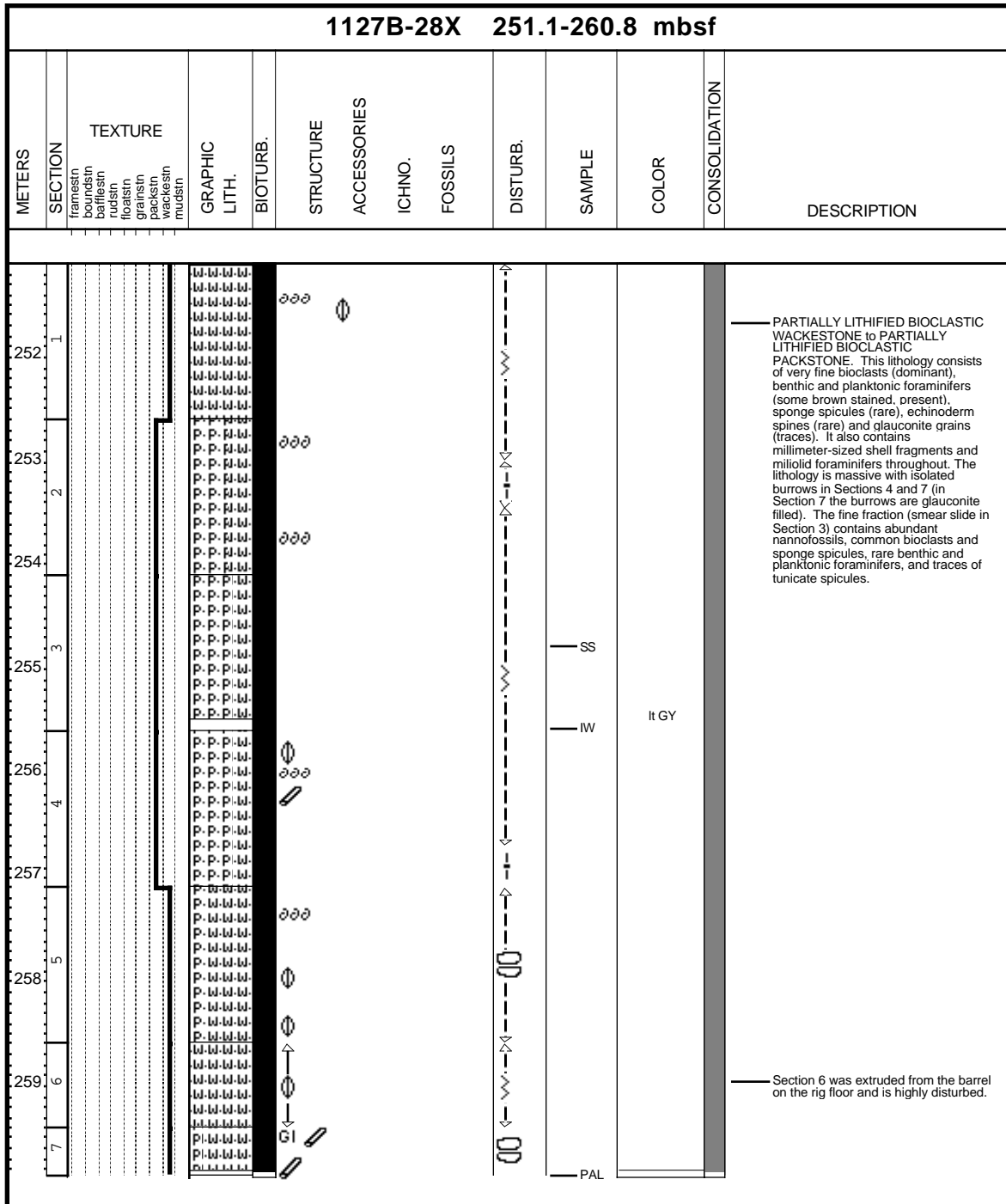
Core Photo



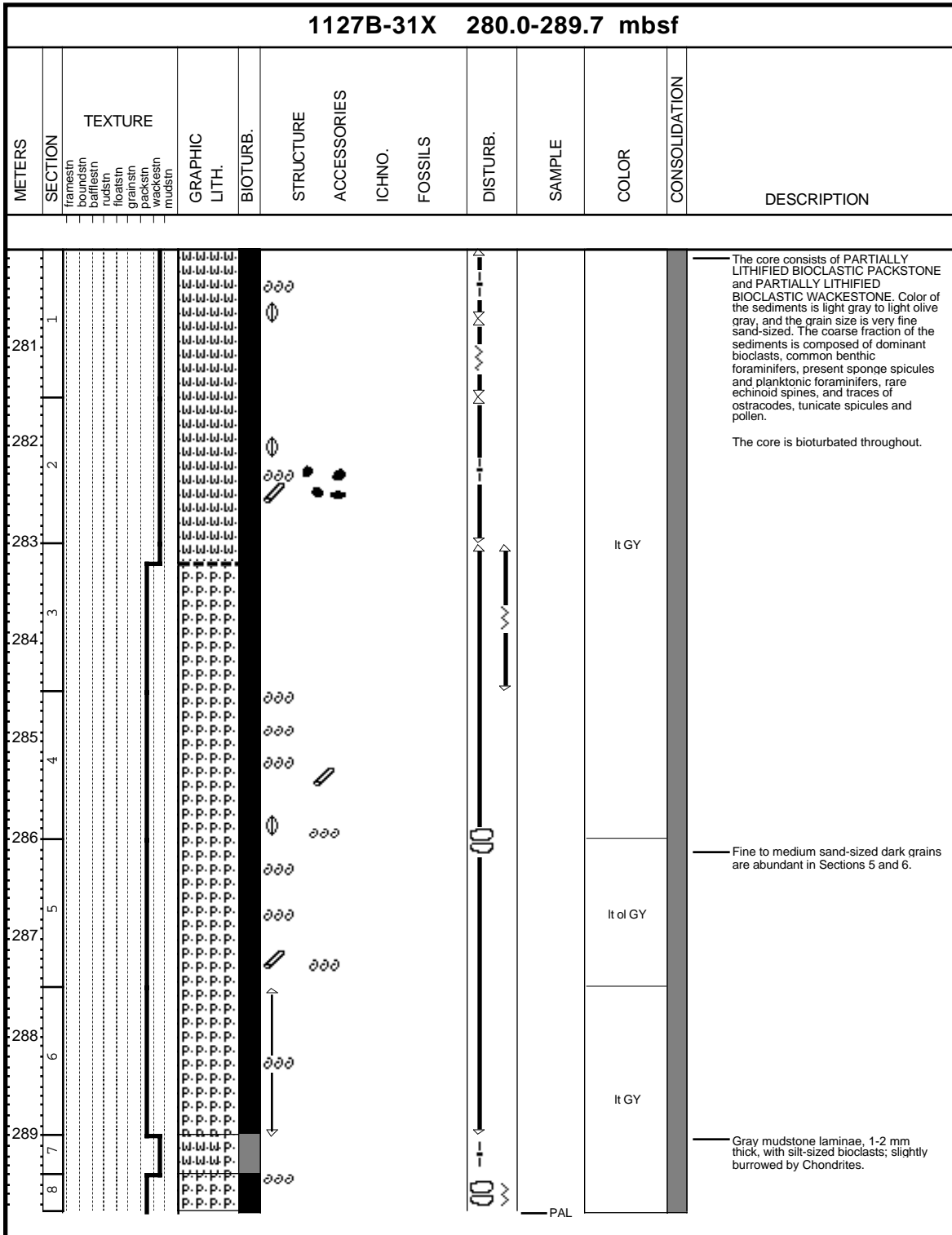
Core Photo



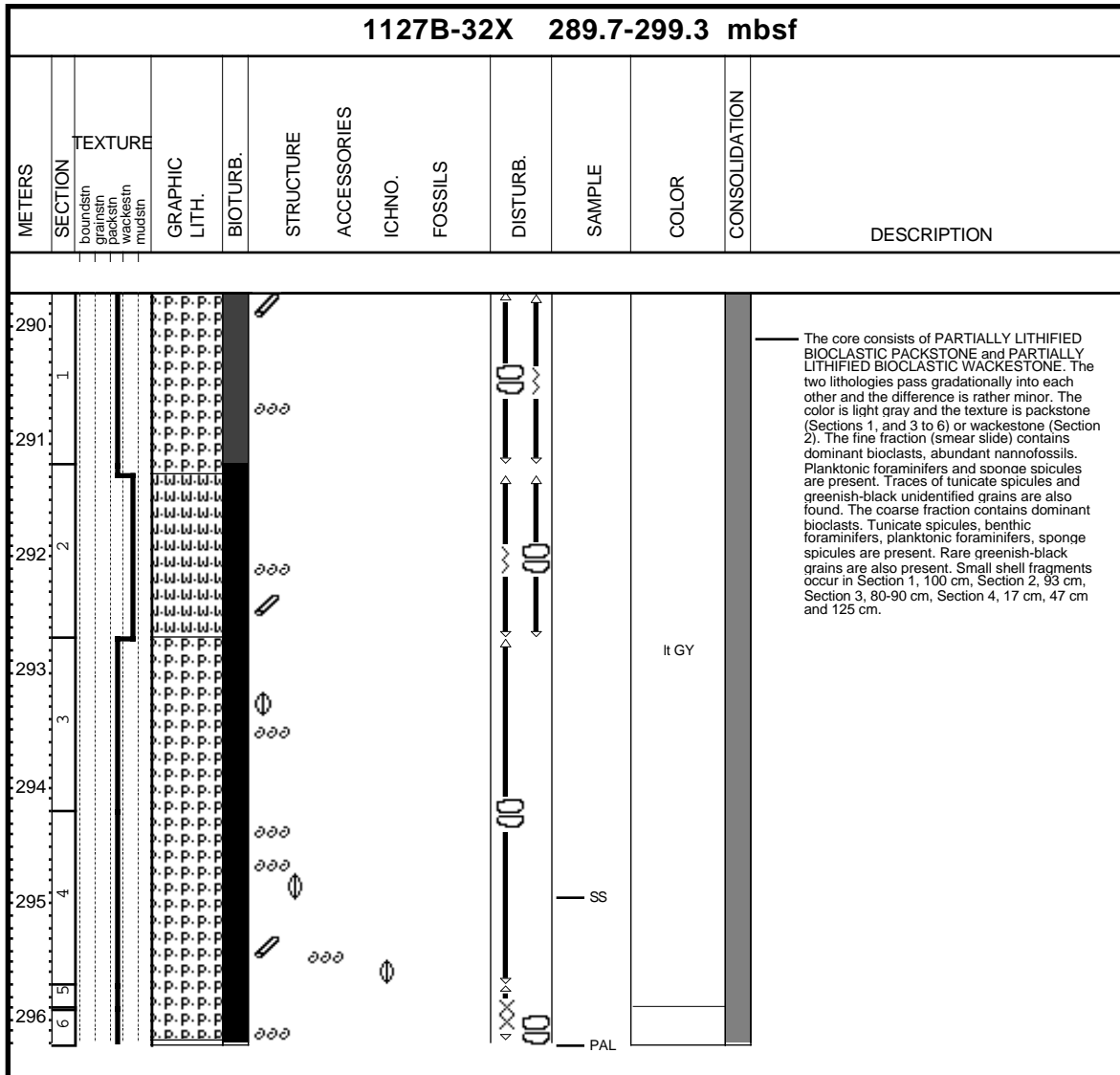
Core Photo



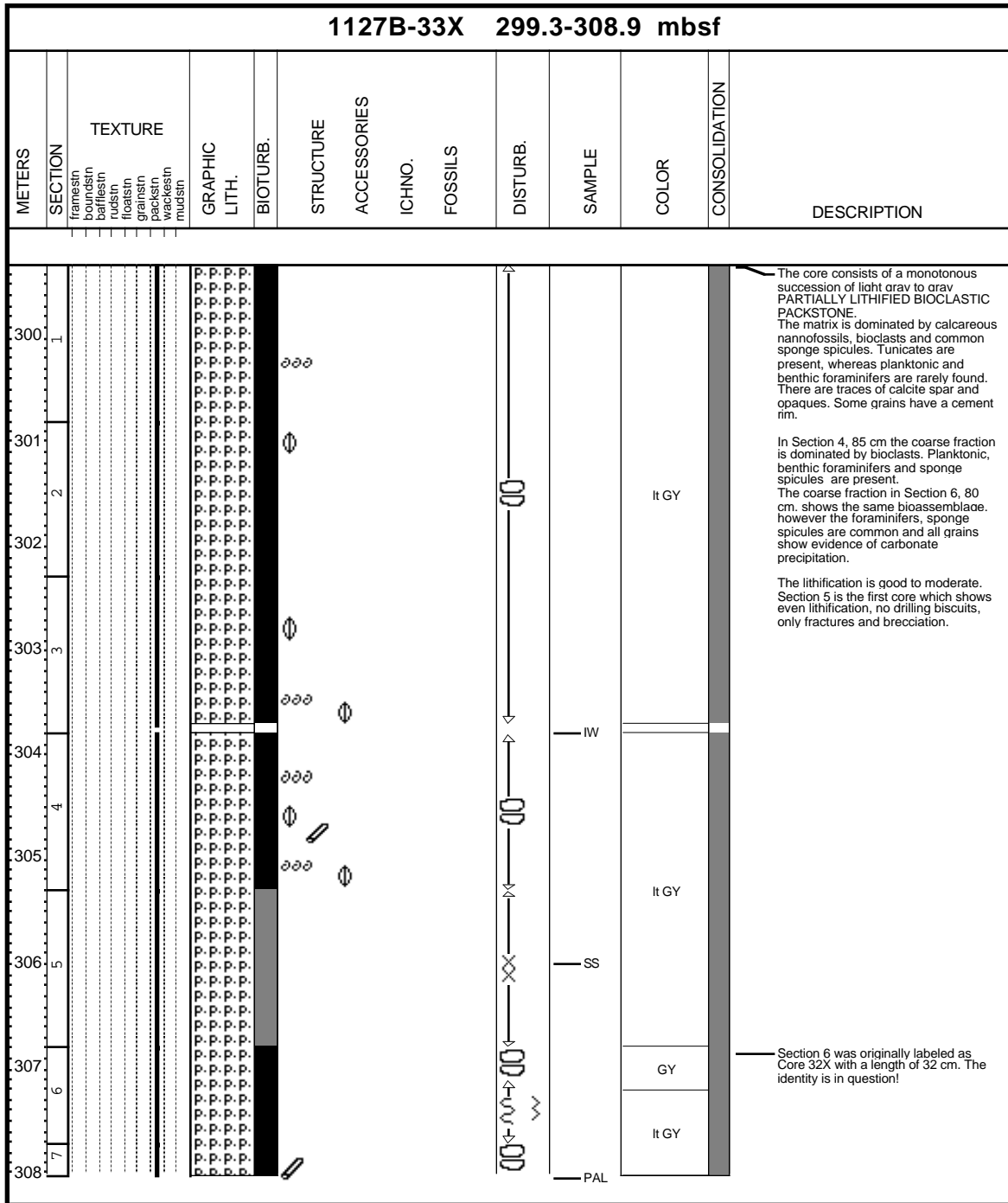
Core Photo



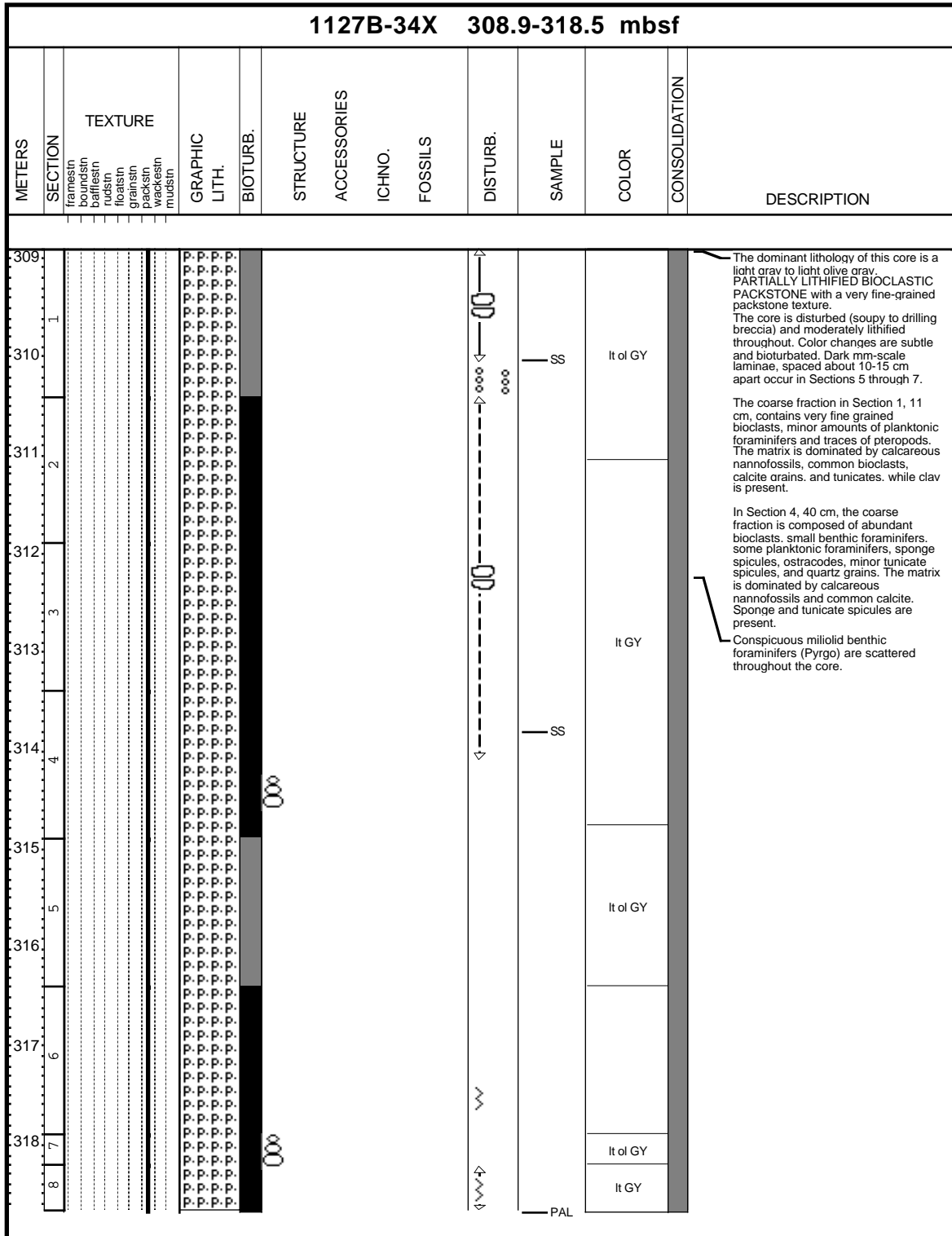
Core Photo



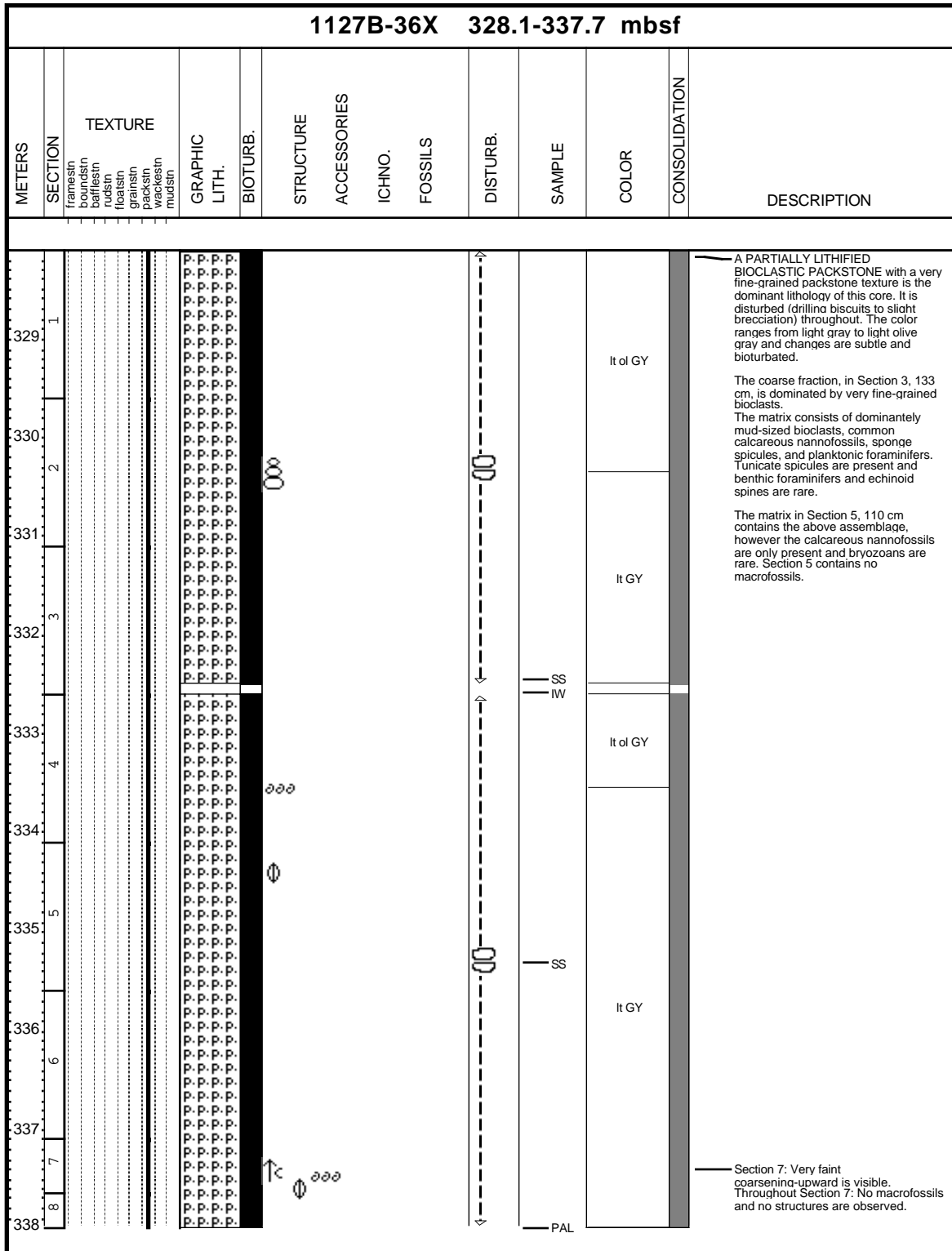
Core Photo



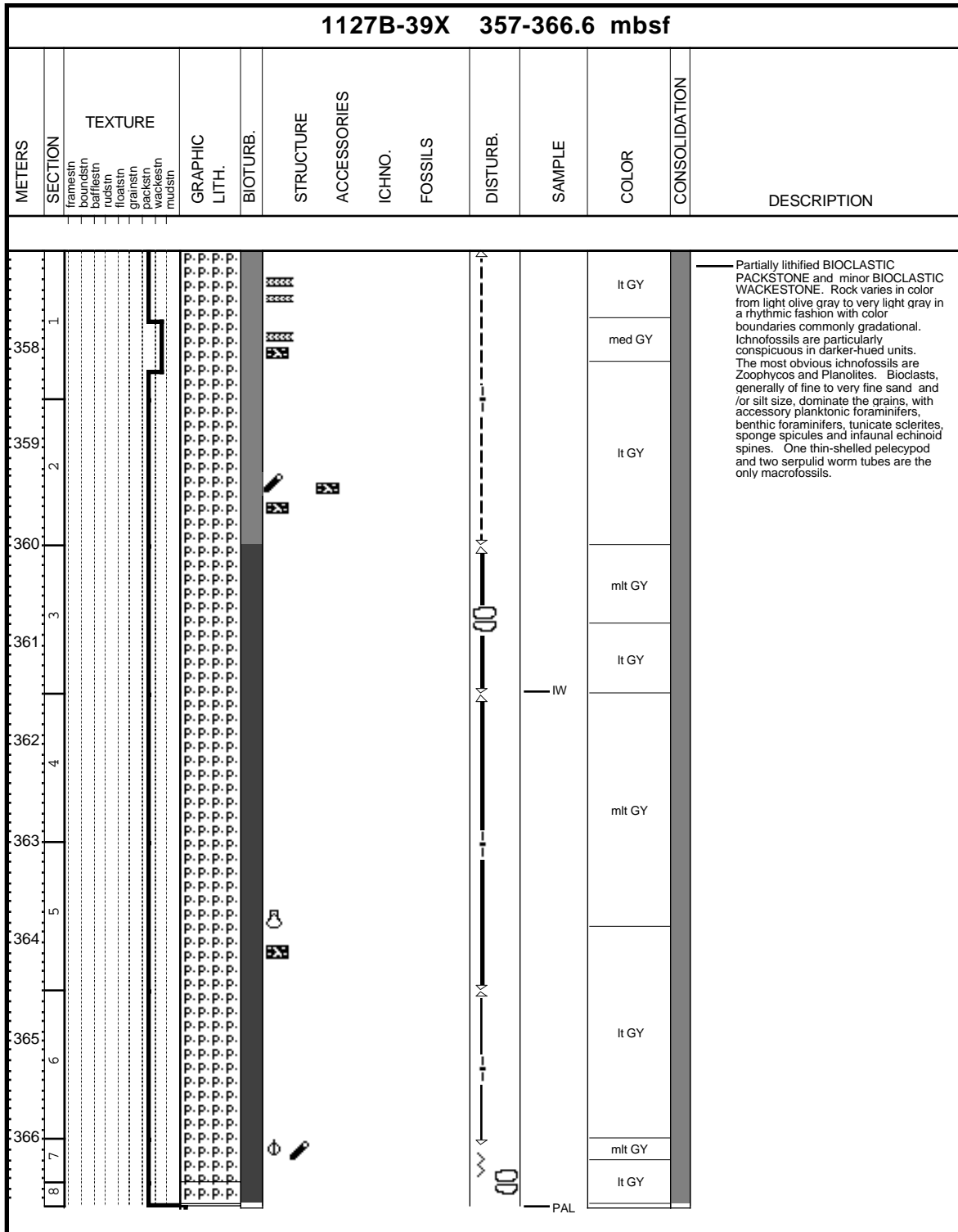
Core Photo



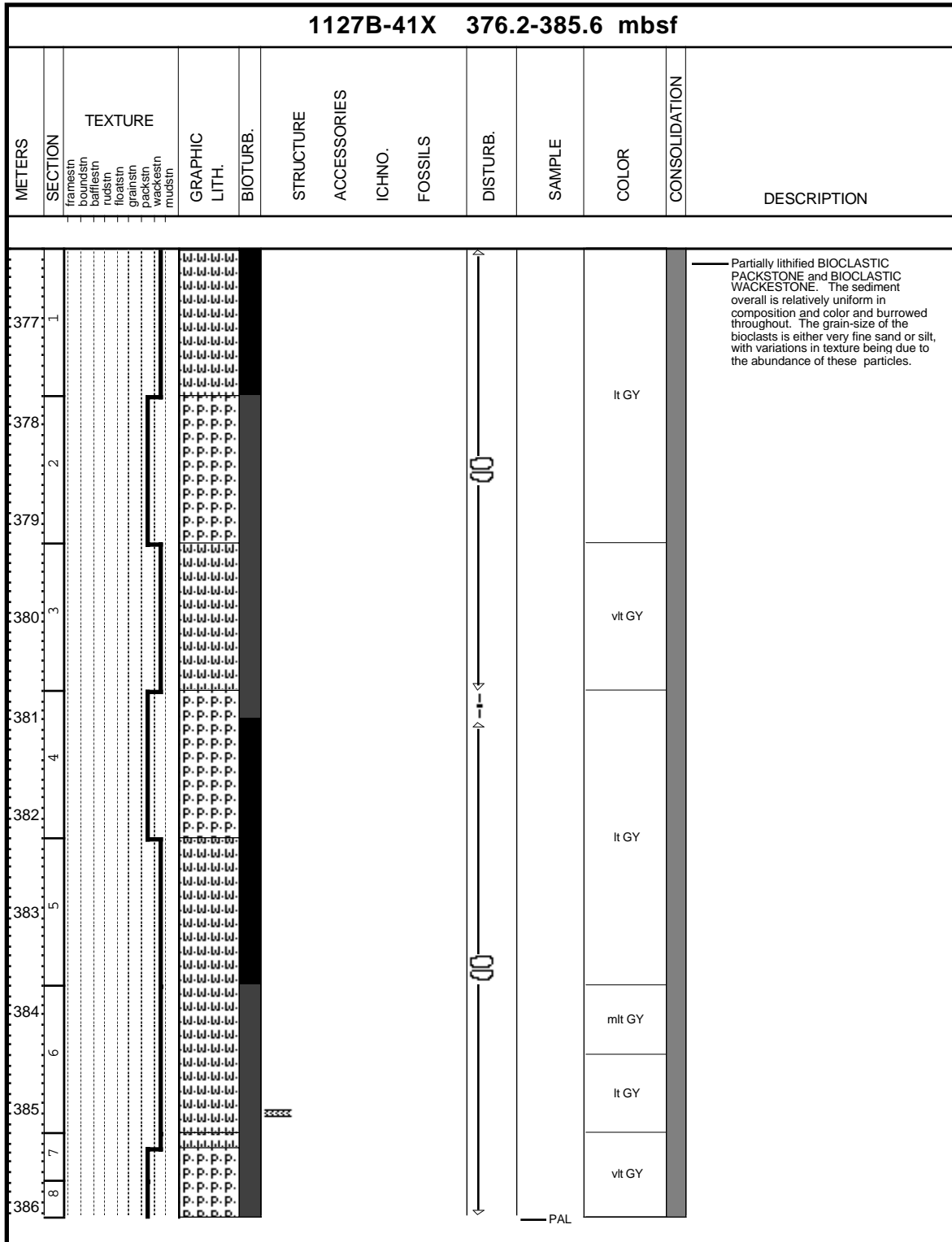
Core Photo



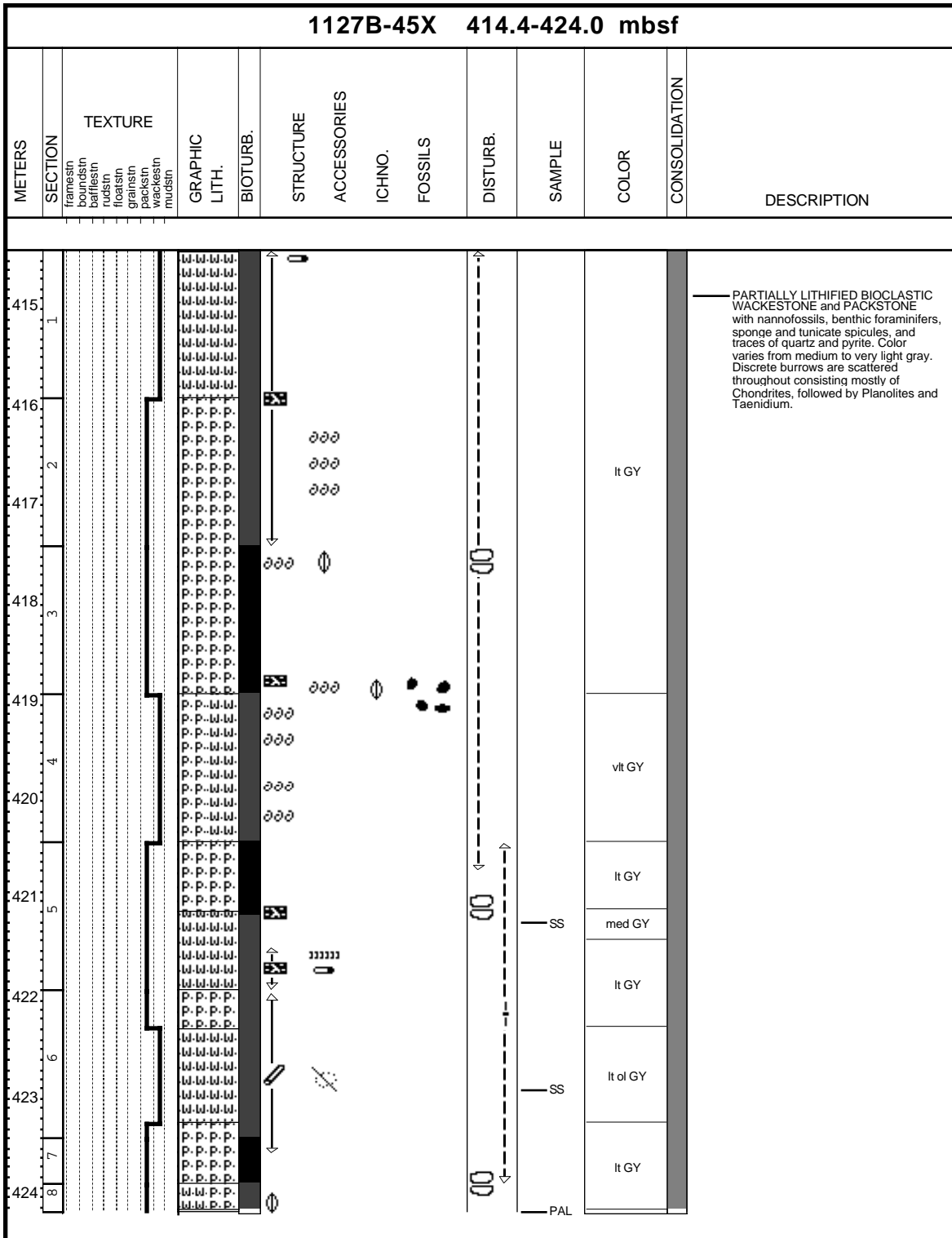
Core Photo



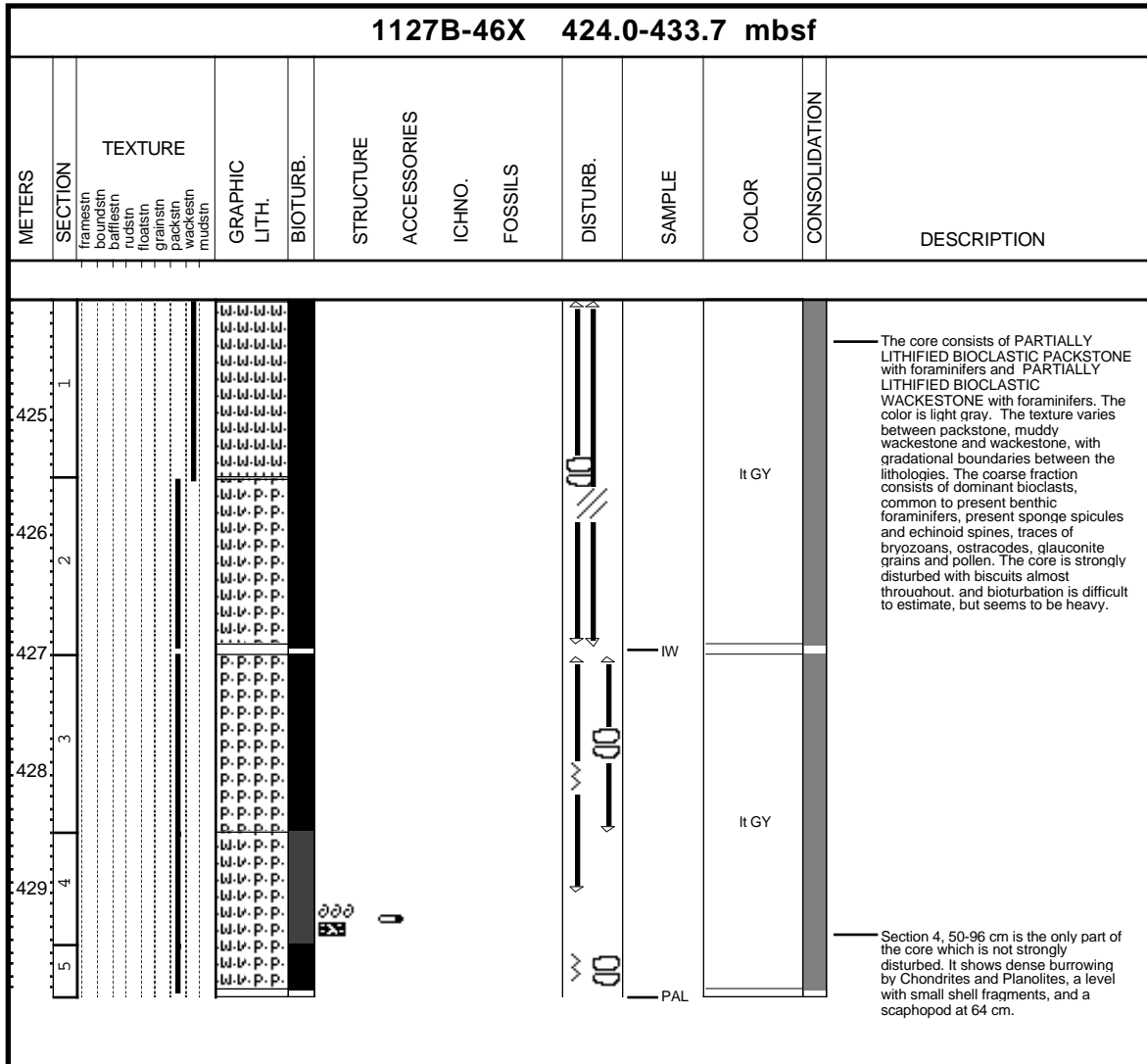
Core Photo



Core Photo

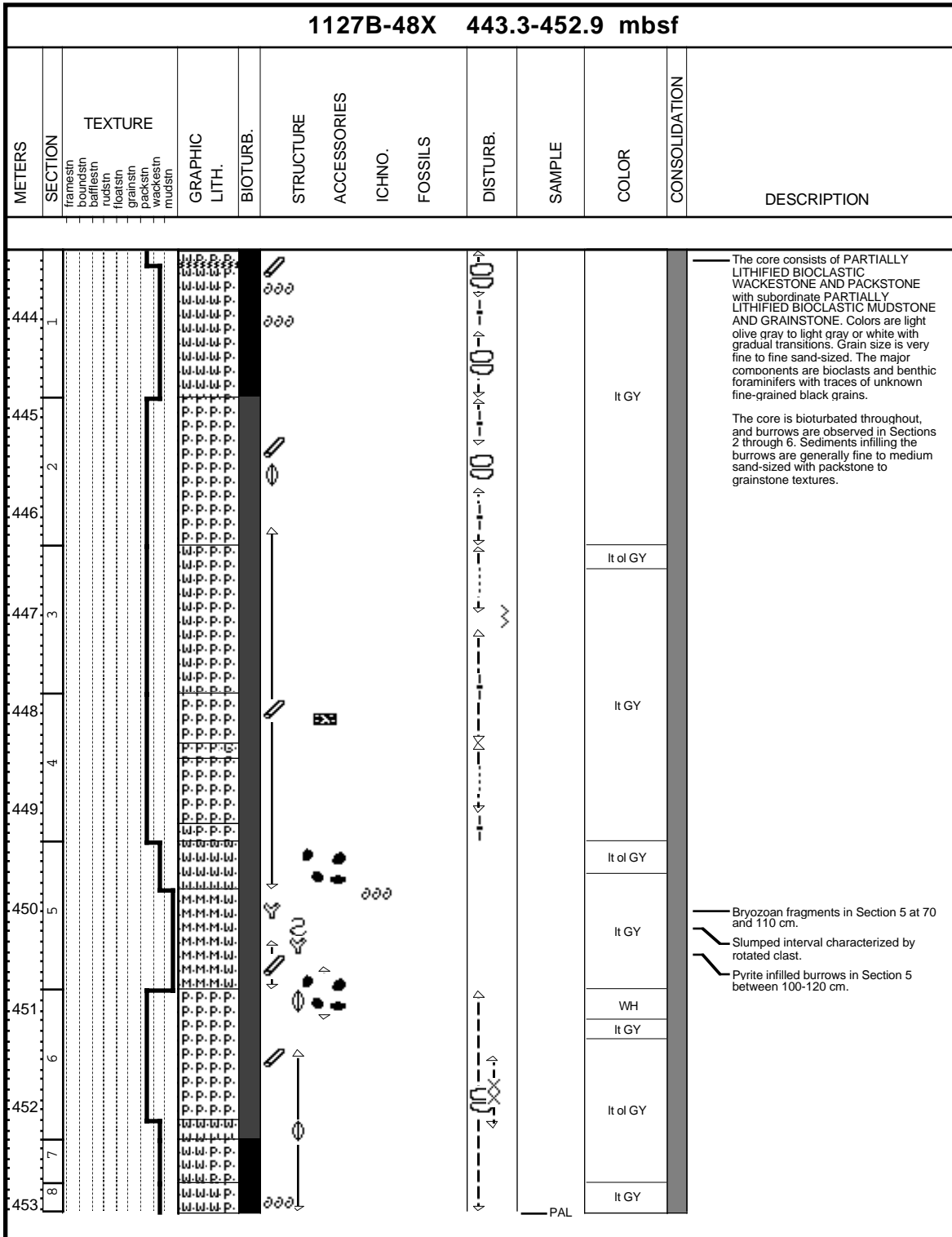


Core Photo

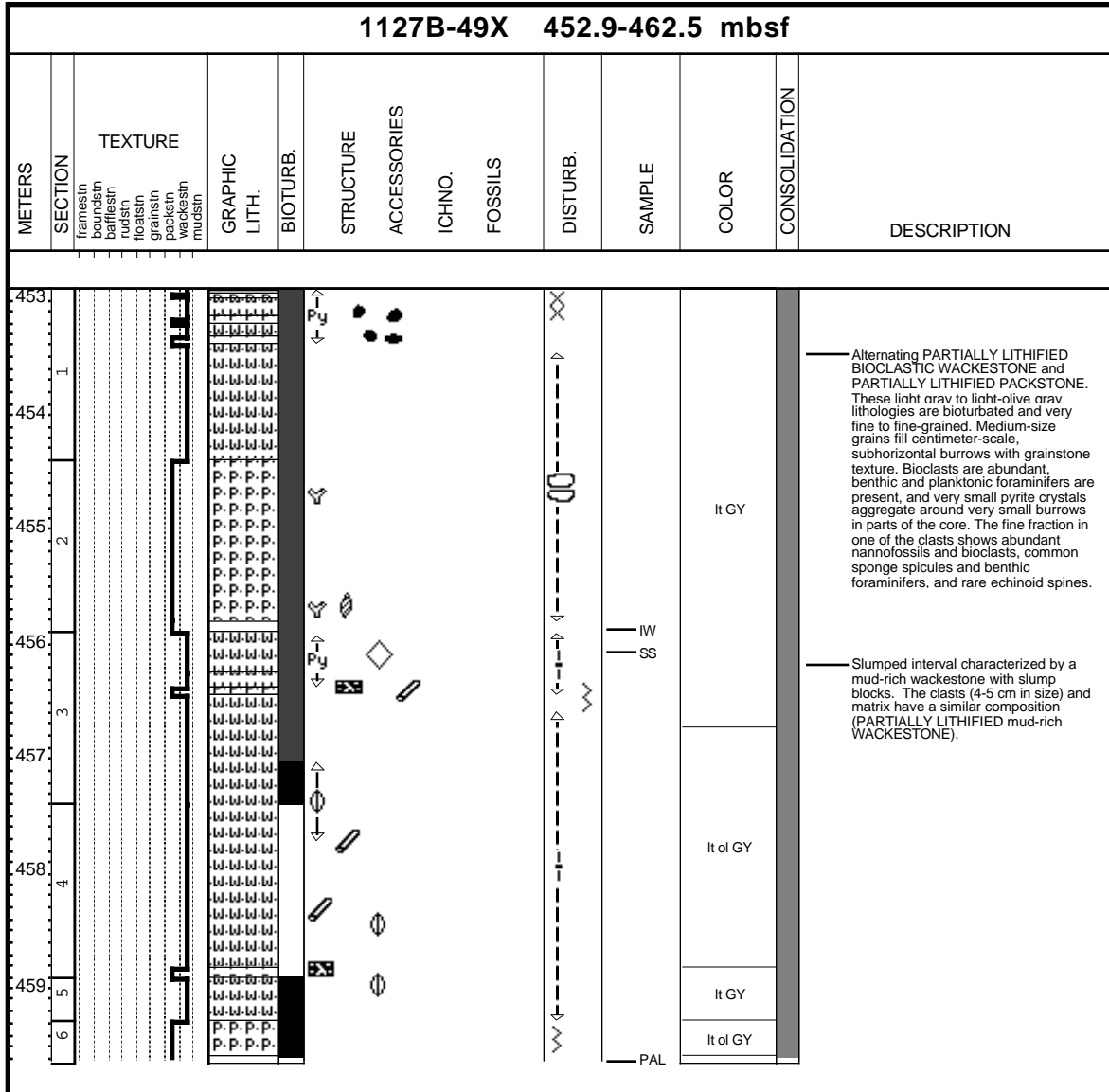


CORE DESCRIPTIONS
VISUAL CORE DESCRIPTIONS, SITE 1127

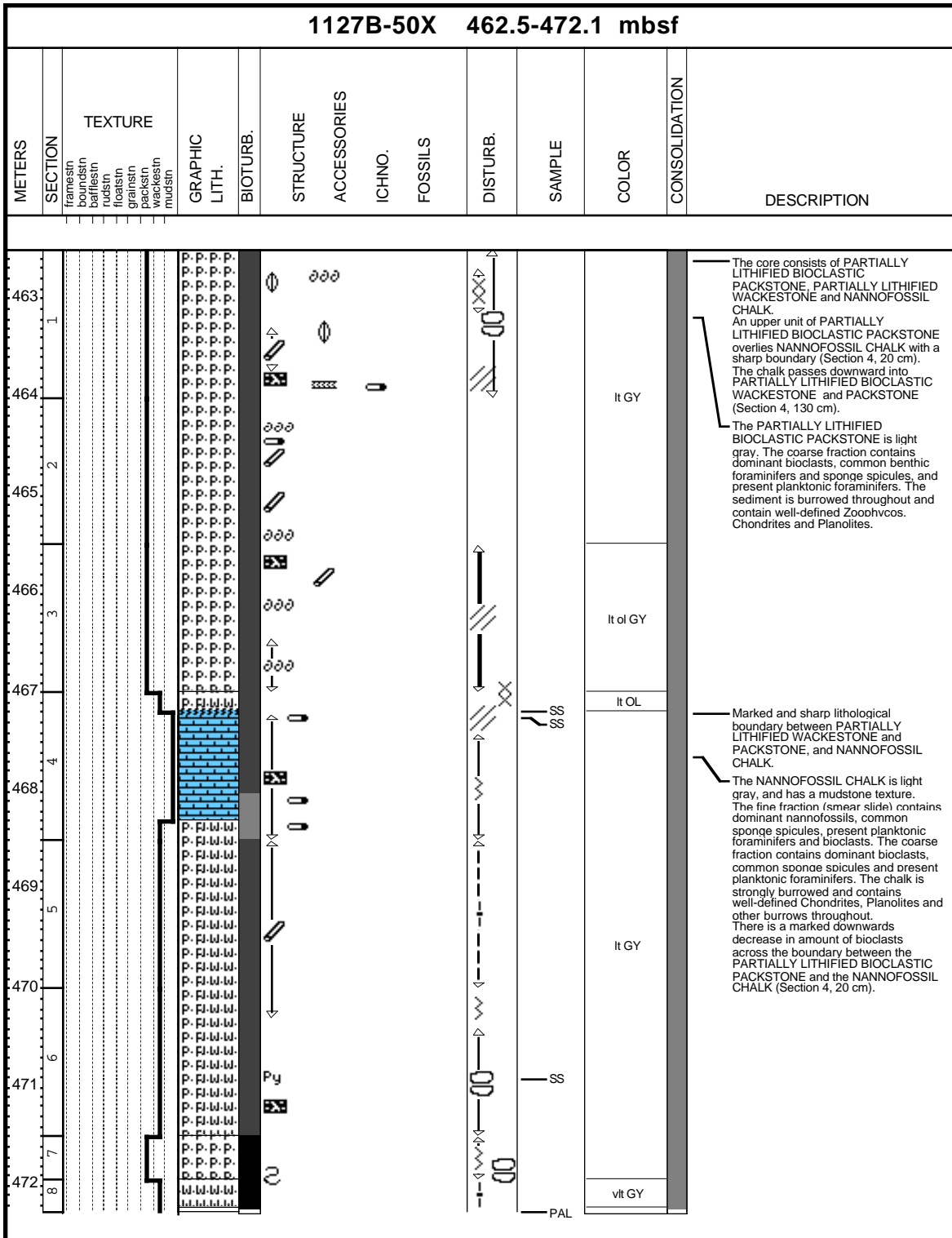
Core Photo



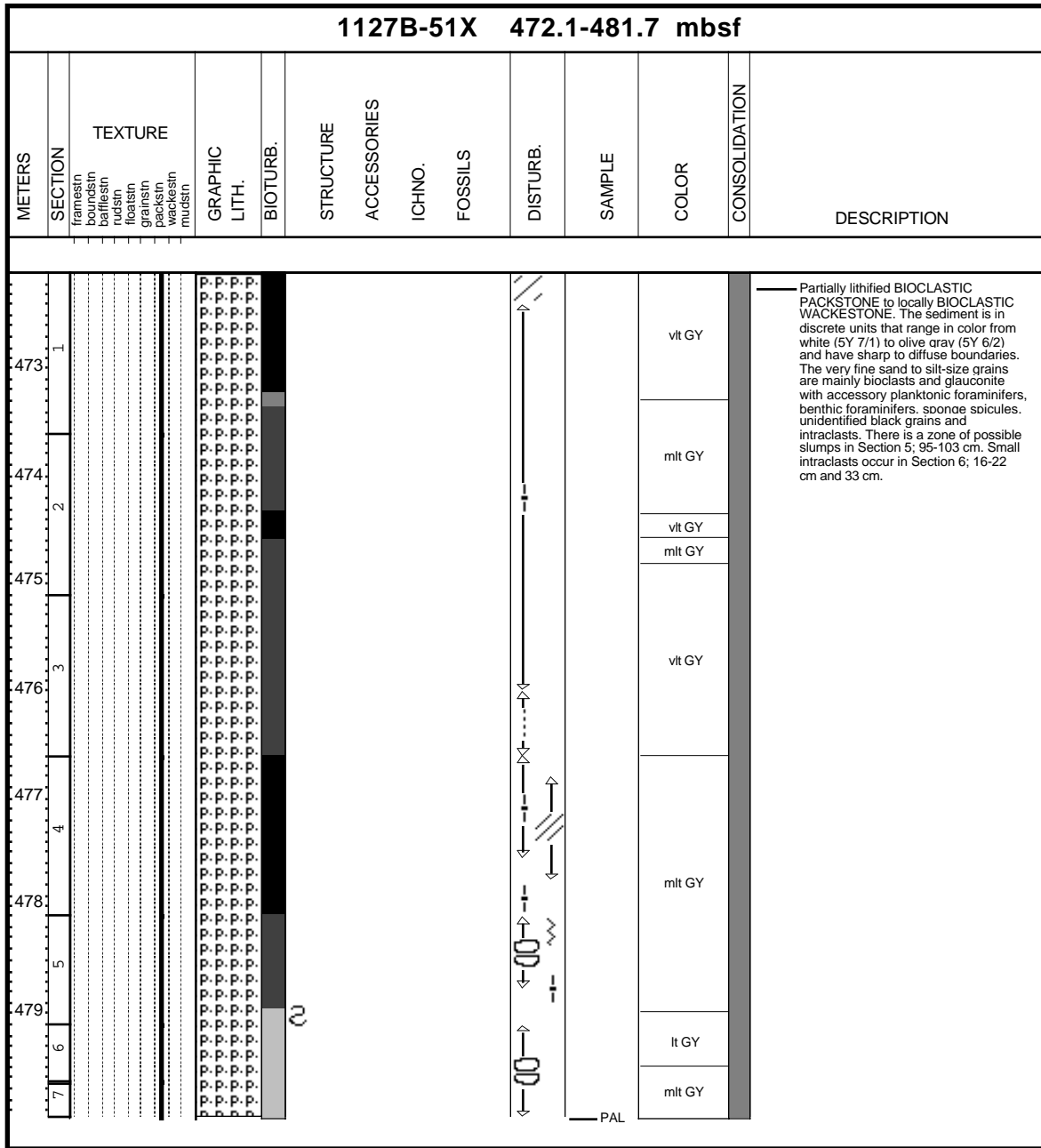
Core Photo



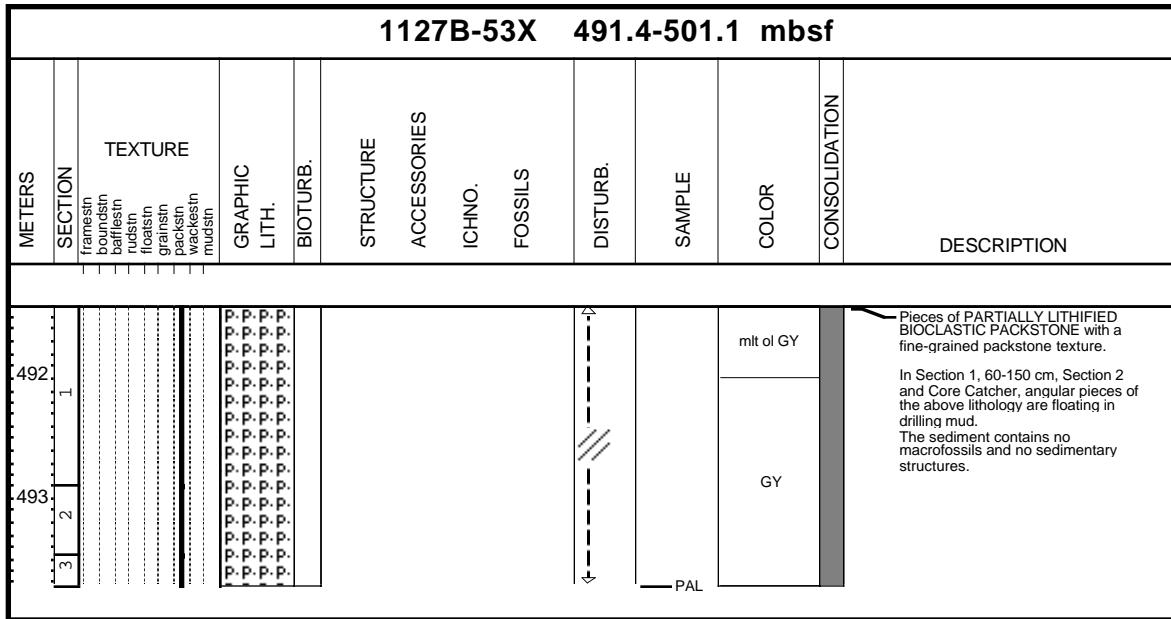
Core Photo



Core Photo



Core Photo



1127B-54X NO RECOVERY

Core Photo

1127B-55X 507.7-510.7 mbsf													
METERS	SECTION	TEXTURE	GRAPHIC LITH.	BIOTURB.	STRUCTURE	ACCESSORIES	ICHO.	FOSSILS	DISTURB.	SAMPLE	COLOR	CONSOLIDATION	DESCRIPTION
	framesin boundstrn baffliesin rudstin floatstin grainstin packstin wackstin mudstin												<p>Pieces of heavily chertified, dark gray BIOCLASTIC PACKSTONE. Some vugs infilled with non-chertified chalky material (probably unaltered burrows). Contours of bioclasts can be recognized in the chert, as well as blackened grains.</p>

Sample										Texture			Mineral							Biogenic										Rock		Comments								
Leg	Site	Hole	Core	Type	Section	Top (cm)	Depth (mbsf)	Lithology	Sand	Silt	Clay	Aragonite (15)	Calcite (30)	Dolomite (62)	Fe Oxide (68)	Glauconite (82)	Opauques (140)	Pyrite (169)	Quartz (172)	Algae (5)	Benthic Forams (20)	Bivalves (23)	Bryozoa (24)	Coccolith (51)	Echinoid Spine (64)	Ostracod (144)	Planktonic Forams (160)	Pollen (162)	Pteropod (166)	Radiolarians (173)	Sponge Spicules (199)		Tunicate (216)	Bioclasts (21)	Organic Debris, Organic Matter (142)					
182	1127	B	28	X	3	46	254.56	D	C	D										R																				
182	1127	B	29	X	4	80	266.10	D		D										P																				
182	1127	B	30	X	5	76	277.16	D		D										P																				
182	1127	B	32	X	4	72	294.92	D												P																				
182	1127	B	33	X	5	70	306.00	D	C	D										R																				
182	1127	B	34	X	1	114	310.04	D												*																				
182	1127	B	34	X	4	39	313.79	D				C											D																	
182	1127	B	35	X	3	95	322.45	D	P		P									*																				
182	1127	B	36	X	3	133	332.43	D						*						R																				
182	1127	B	36	X	5	110	335.20	D												R		R																		
182	1127	B	37	X	4	60	342.80	D												R																				
182	1127	B	37	X	6	20	345.40	D																																
182	1127	B	39	X	3	60	360.60	D							R																									
182	1127	B	39	X	5	110	364.10	D												P																				
182	1127	B	40	X	2	90	369.00	D												C																				
182	1127	B	40	X	5	50	373.10	D												C																				
182	1127	B	44	X	4	70	410.00	D												C																				
182	1127	B	45	X	5	80	421.20	D												C																				
182	1127	B	45	X	6	100	422.90	D												R																				
182	1127	B	49	X	3	15	456.05	D												C																				
182	1127	B	50	X	4	19	467.19	D												C																				
182	1127	B	50	X	4	32.5	467.33	D												C																				
182	1127	B	50	X	6	90	470.90	D										R		R																				

CORE DESCRIPTIONS
SMEAR SLIDES, SITE 1127

