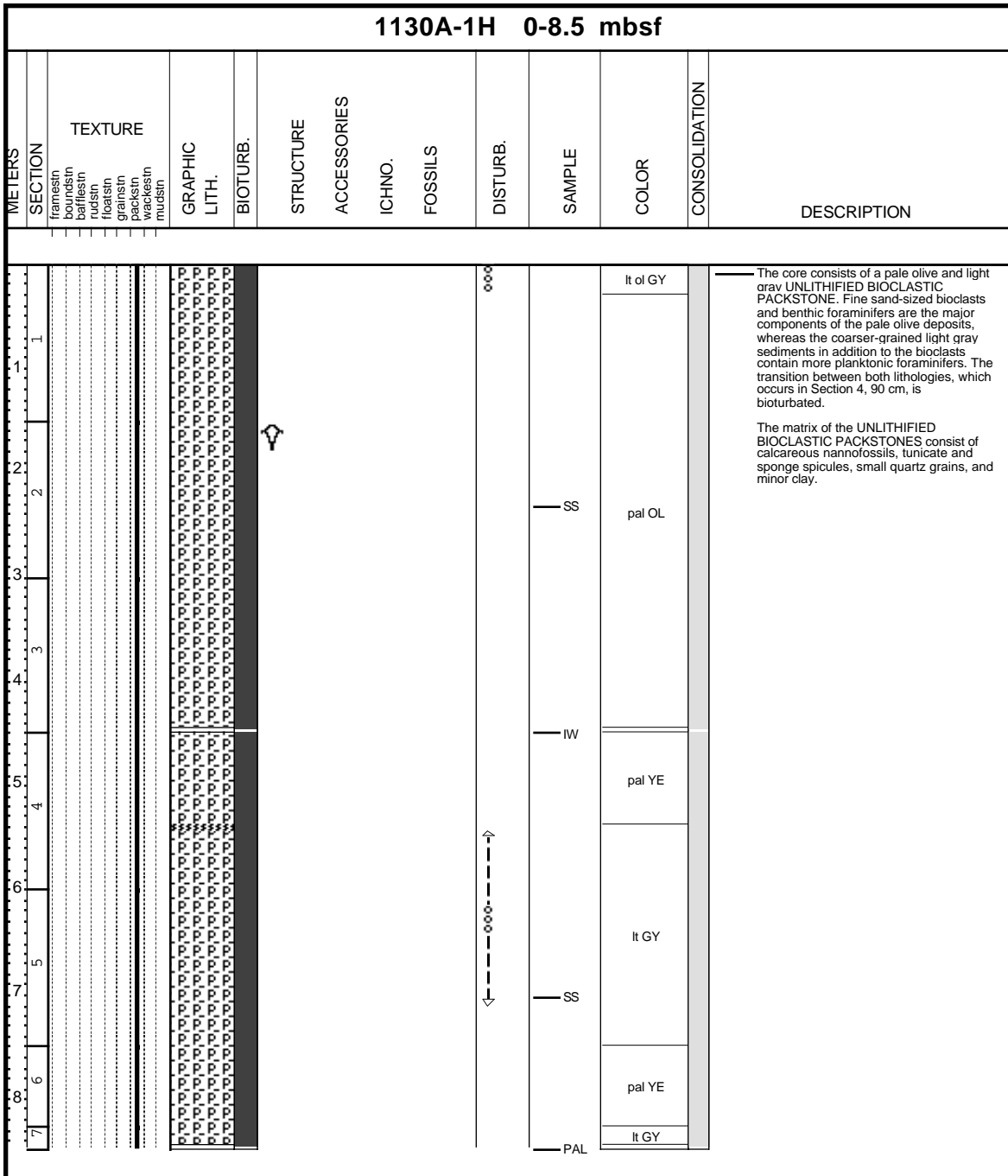
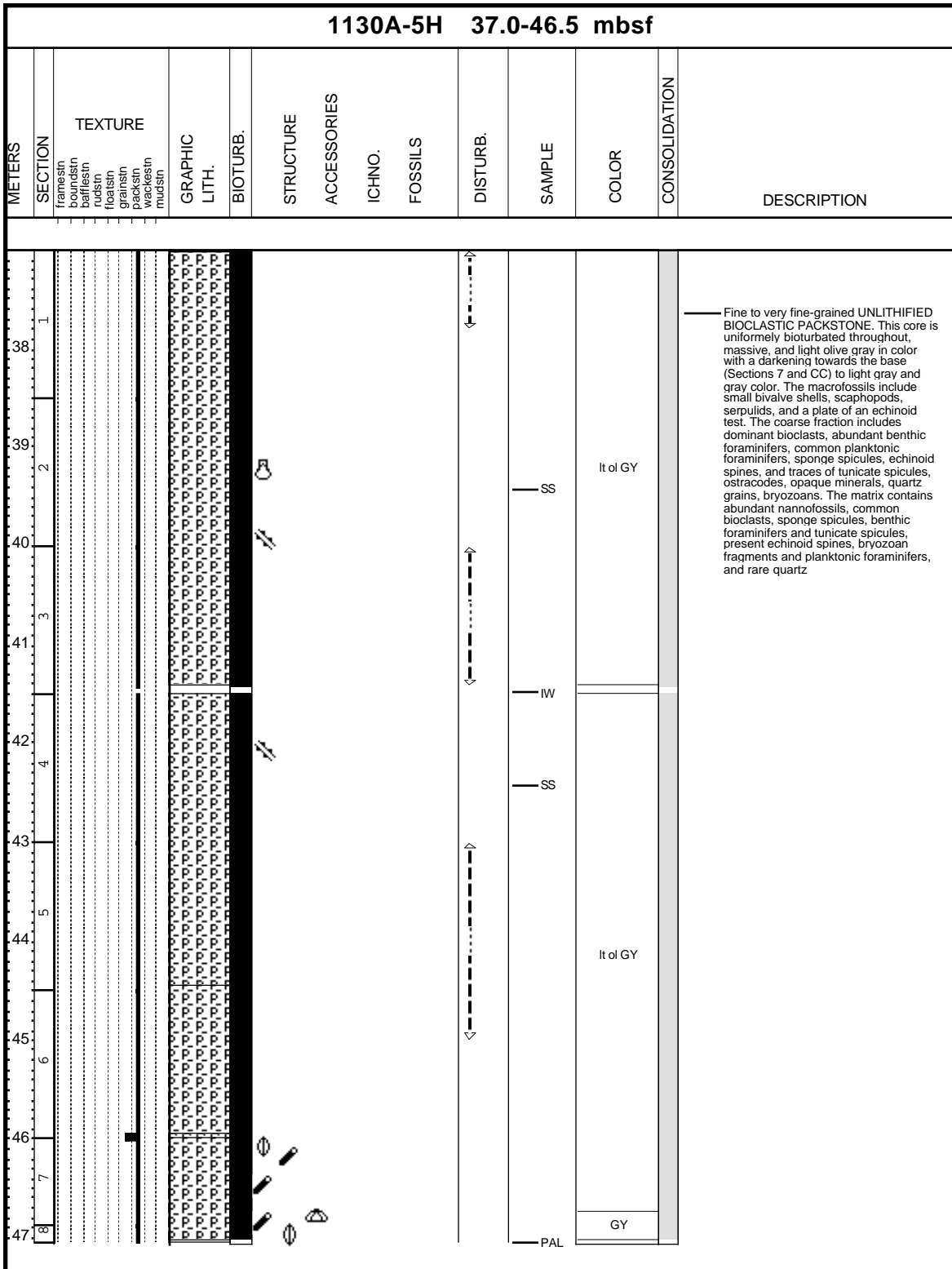


CORE DESCRIPTIONS
VISUAL CORE DESCRIPTIONS, SITE 1130

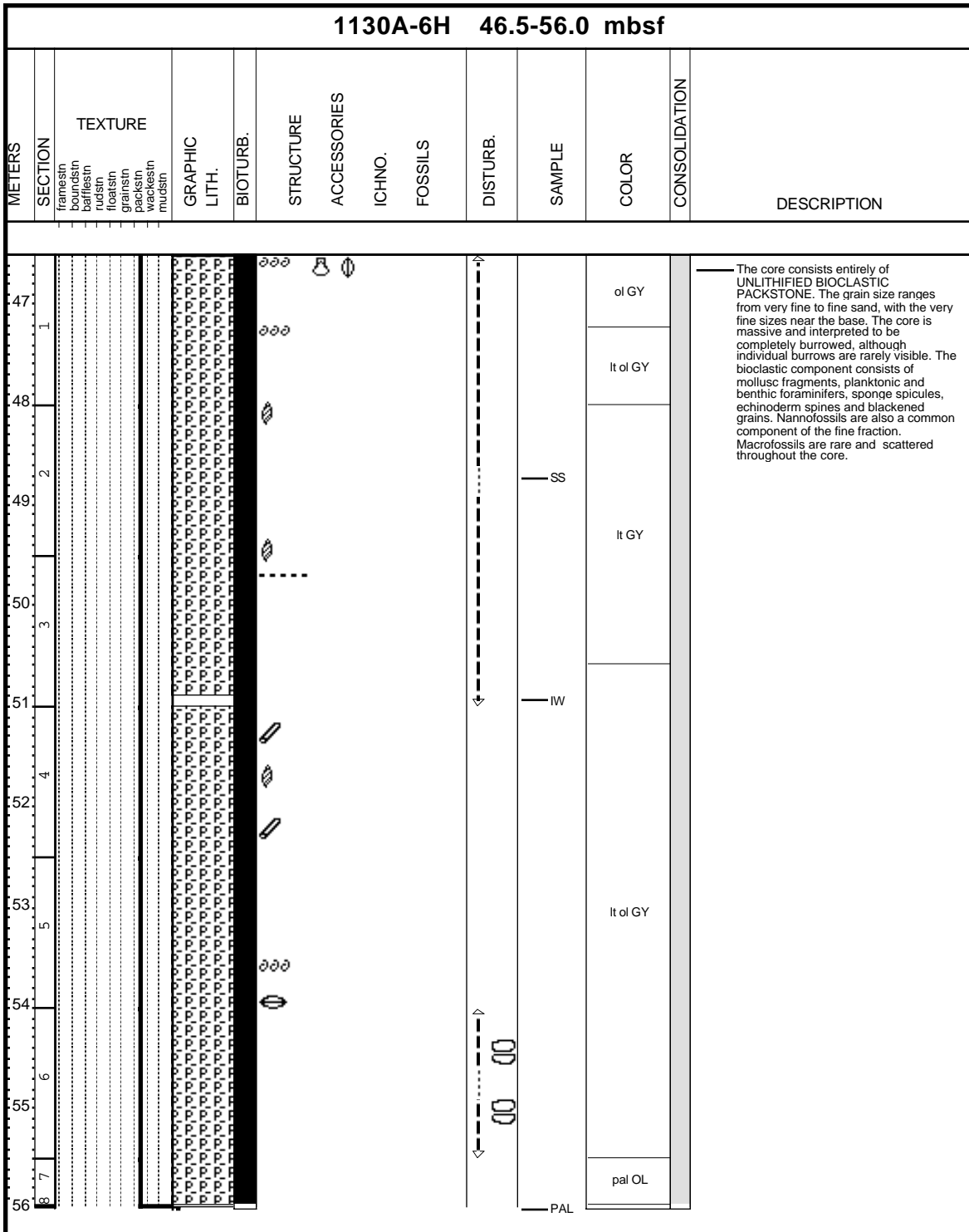
Core Photo



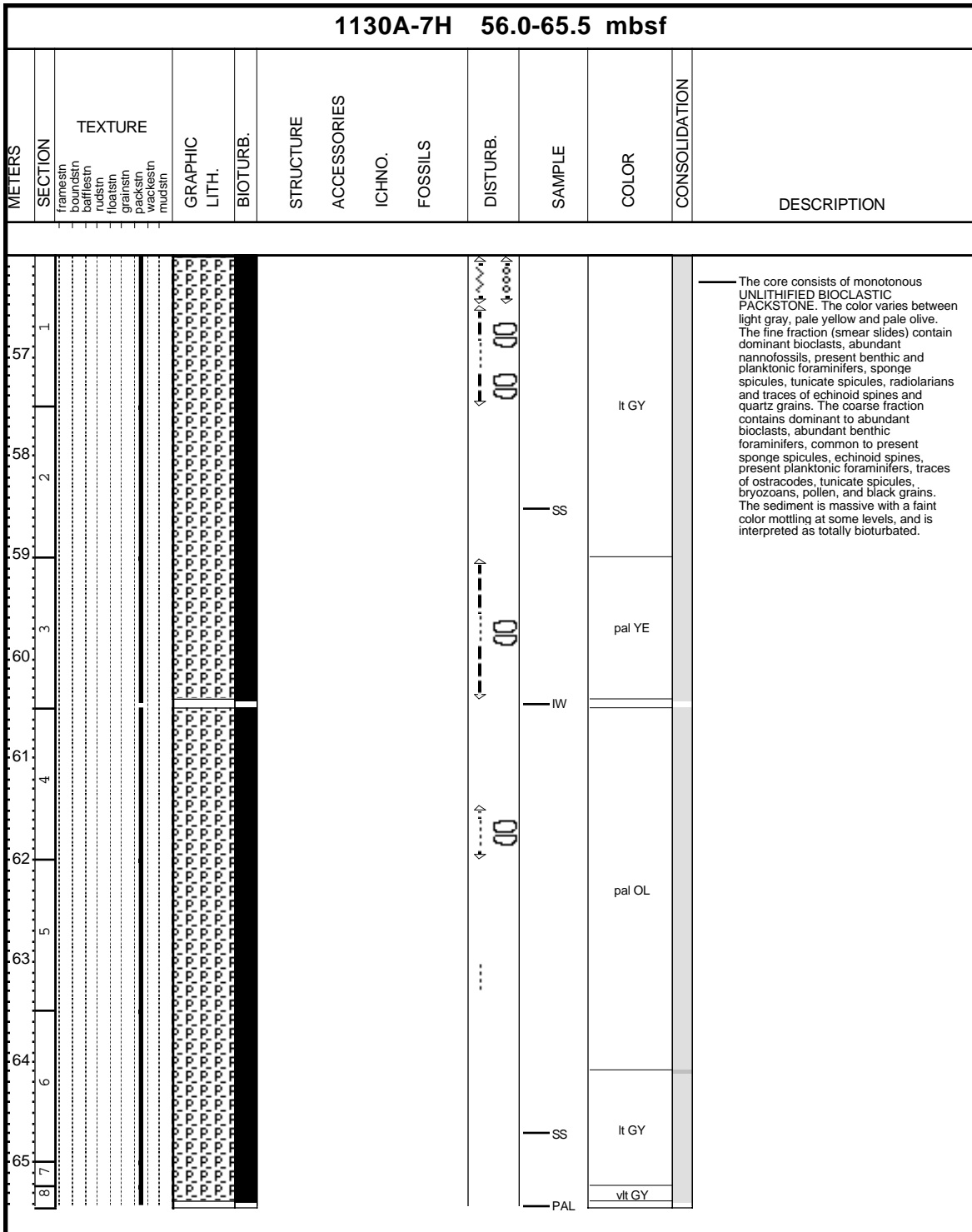
Core Photo



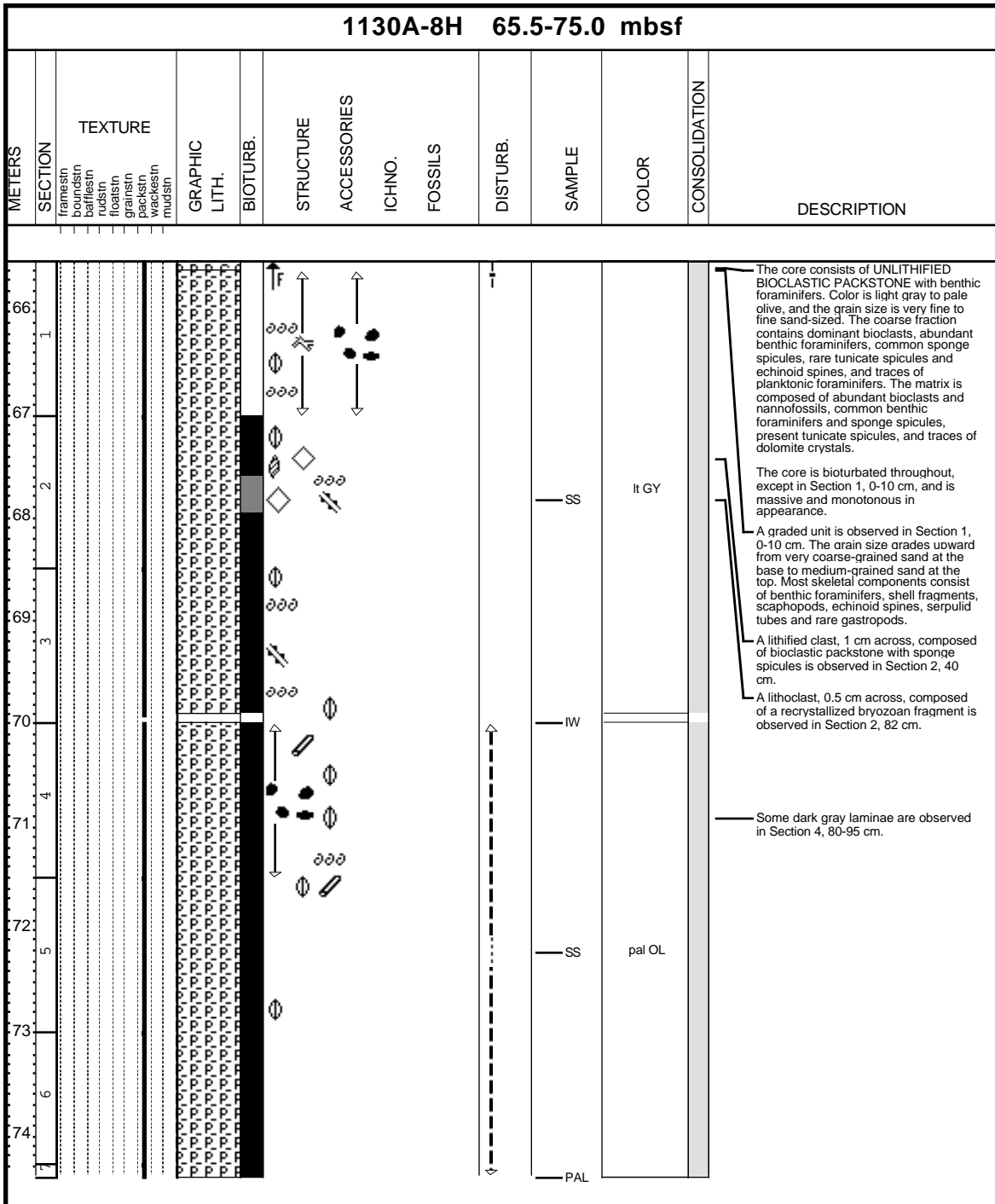
Core Photo



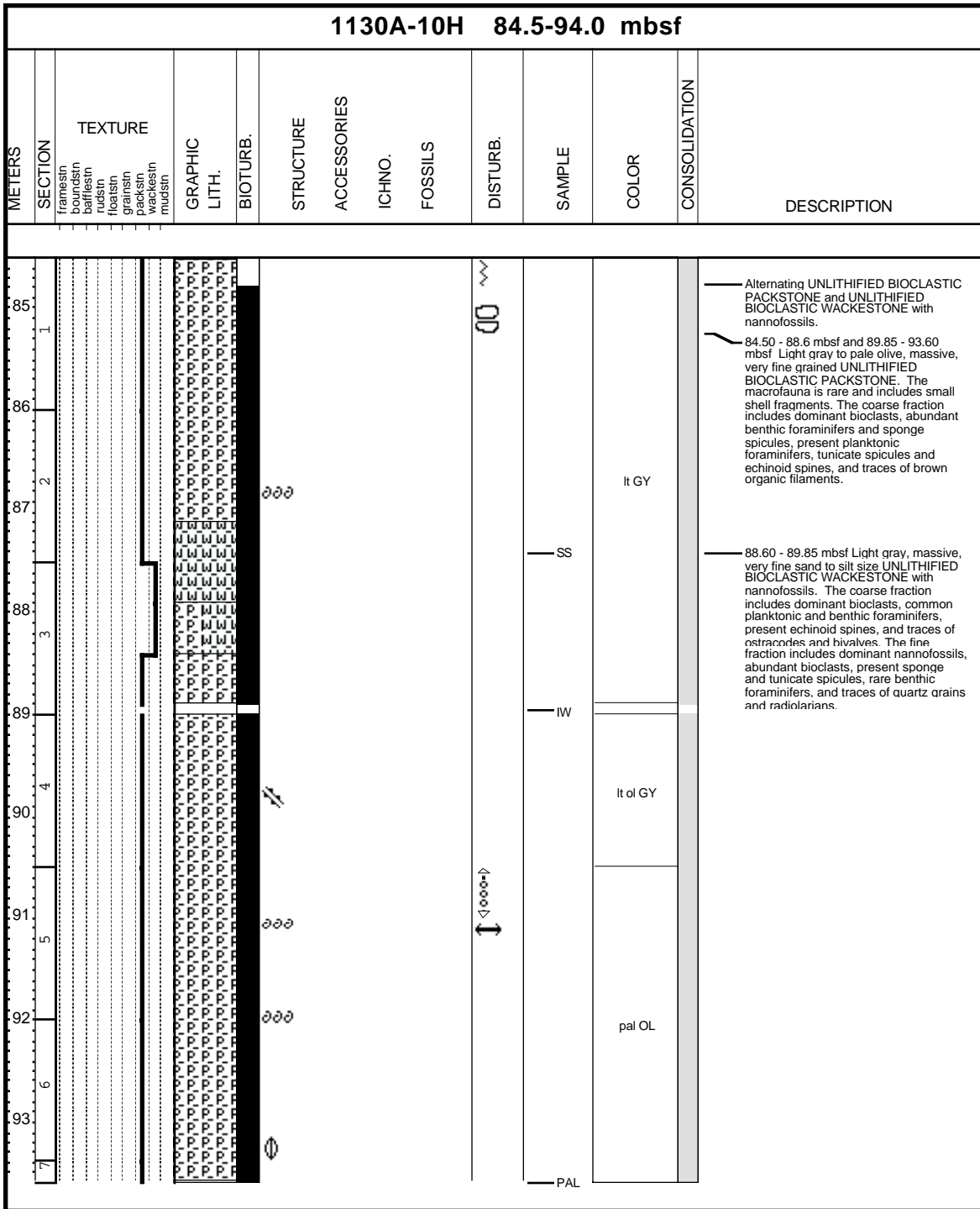
Core Photo



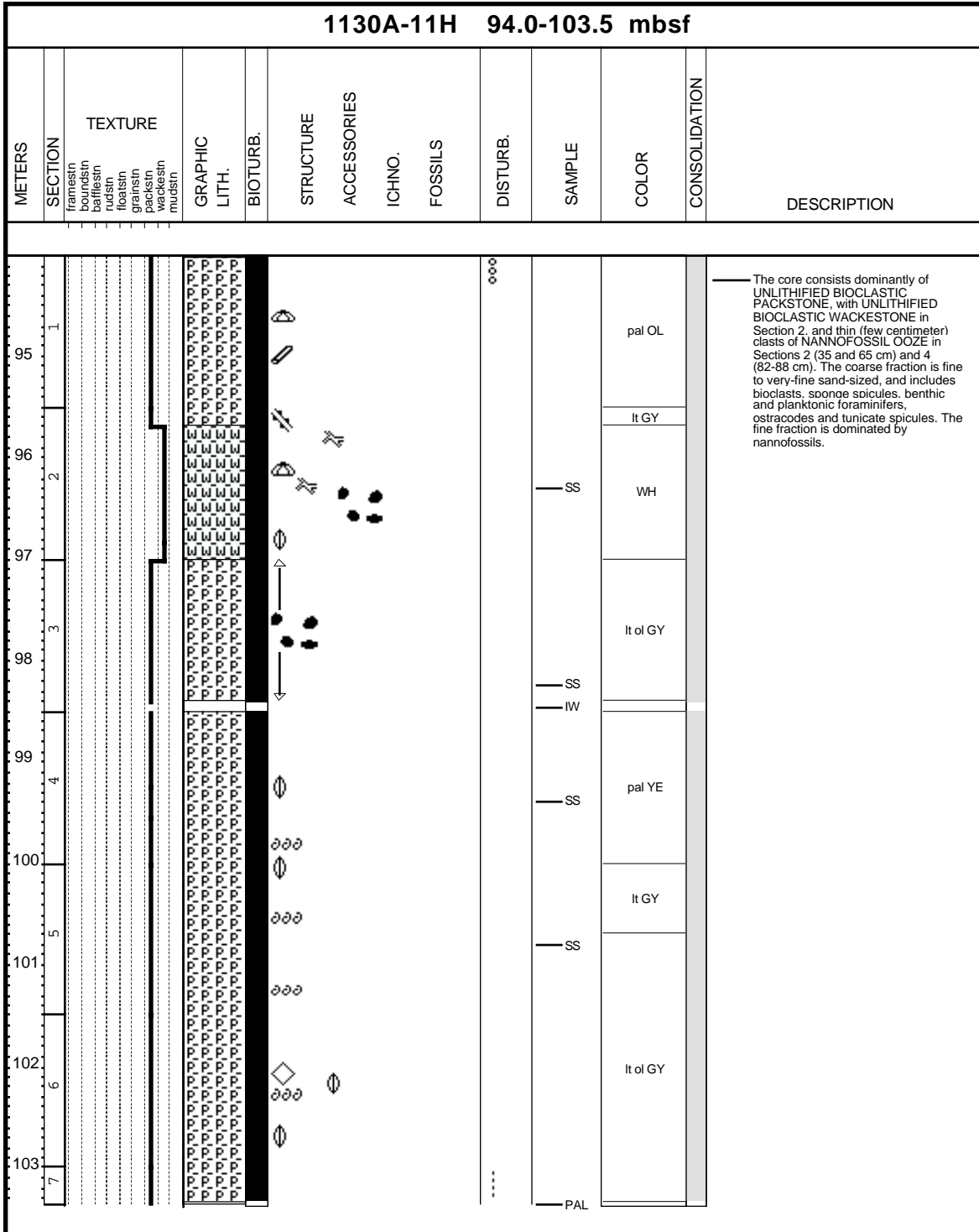
Core Photo



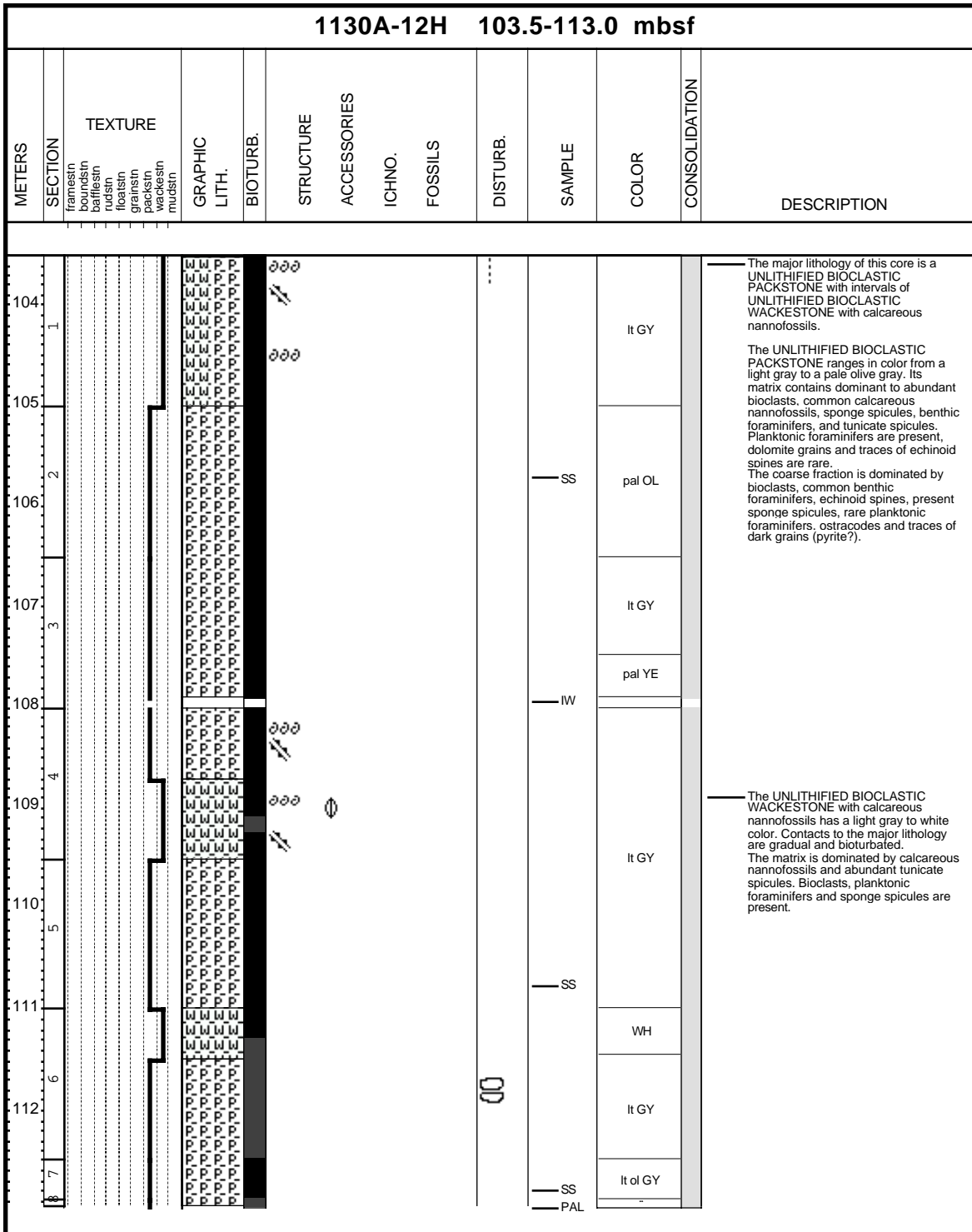
Core Photo



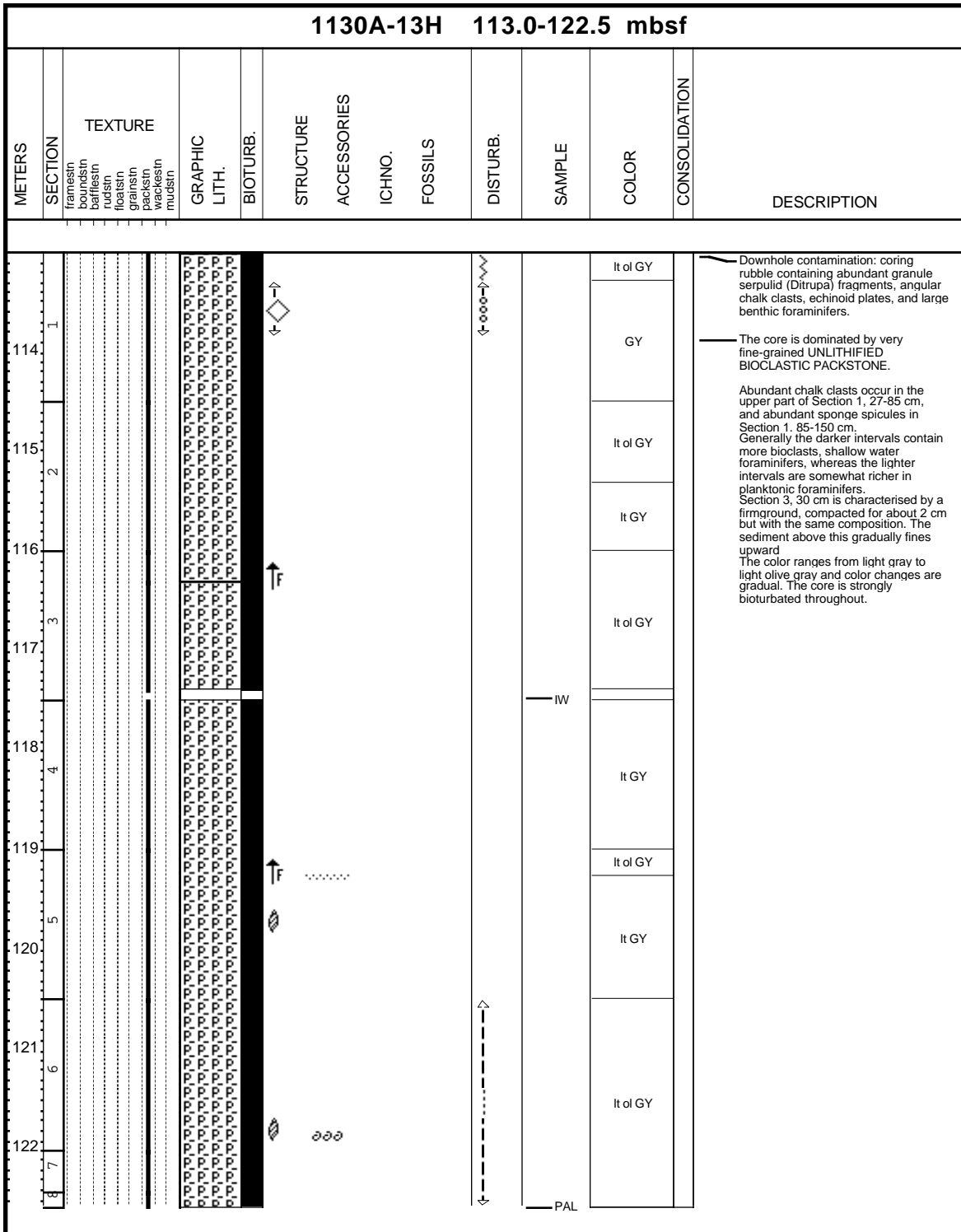
Core Photo



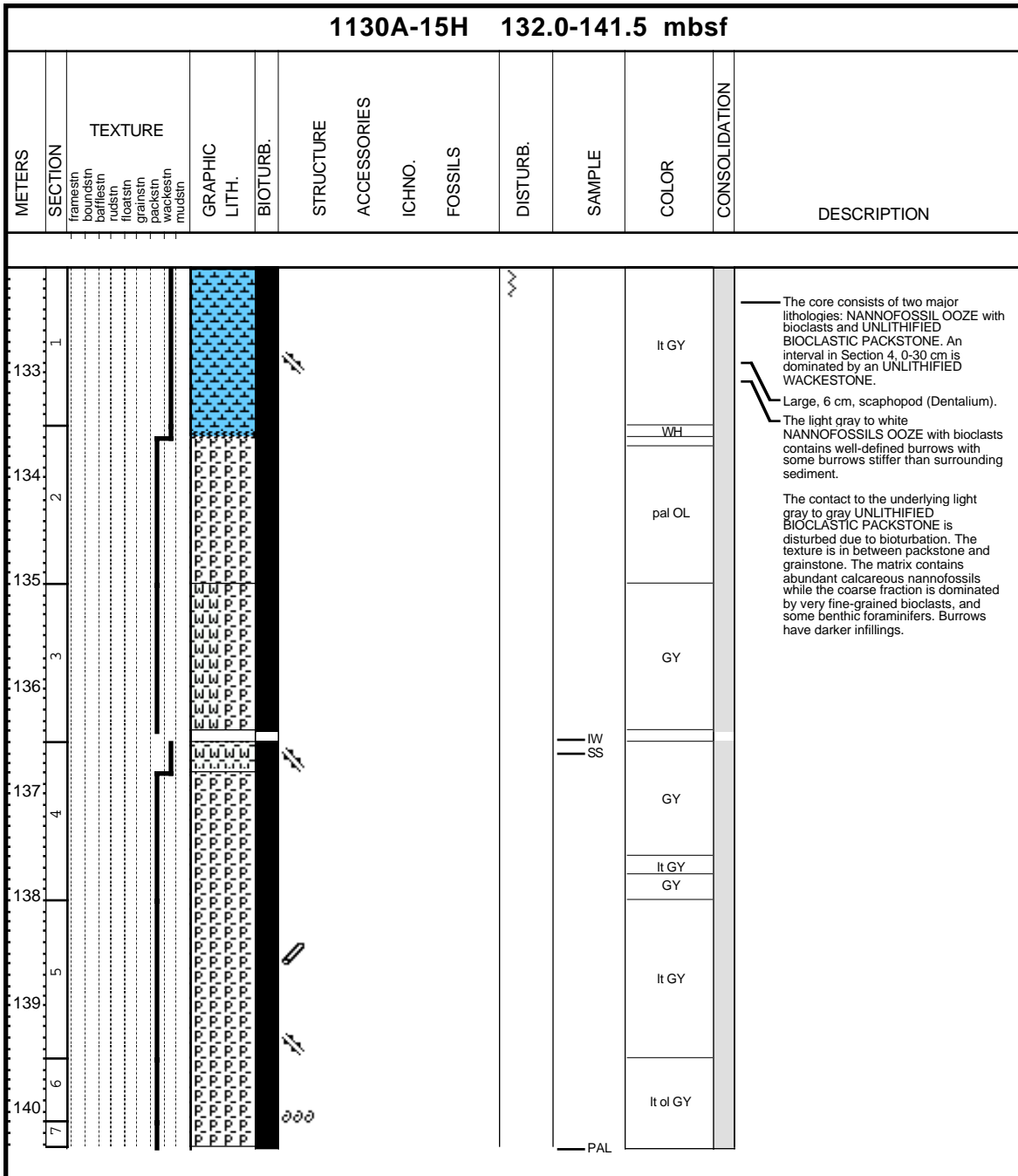
Core Photo



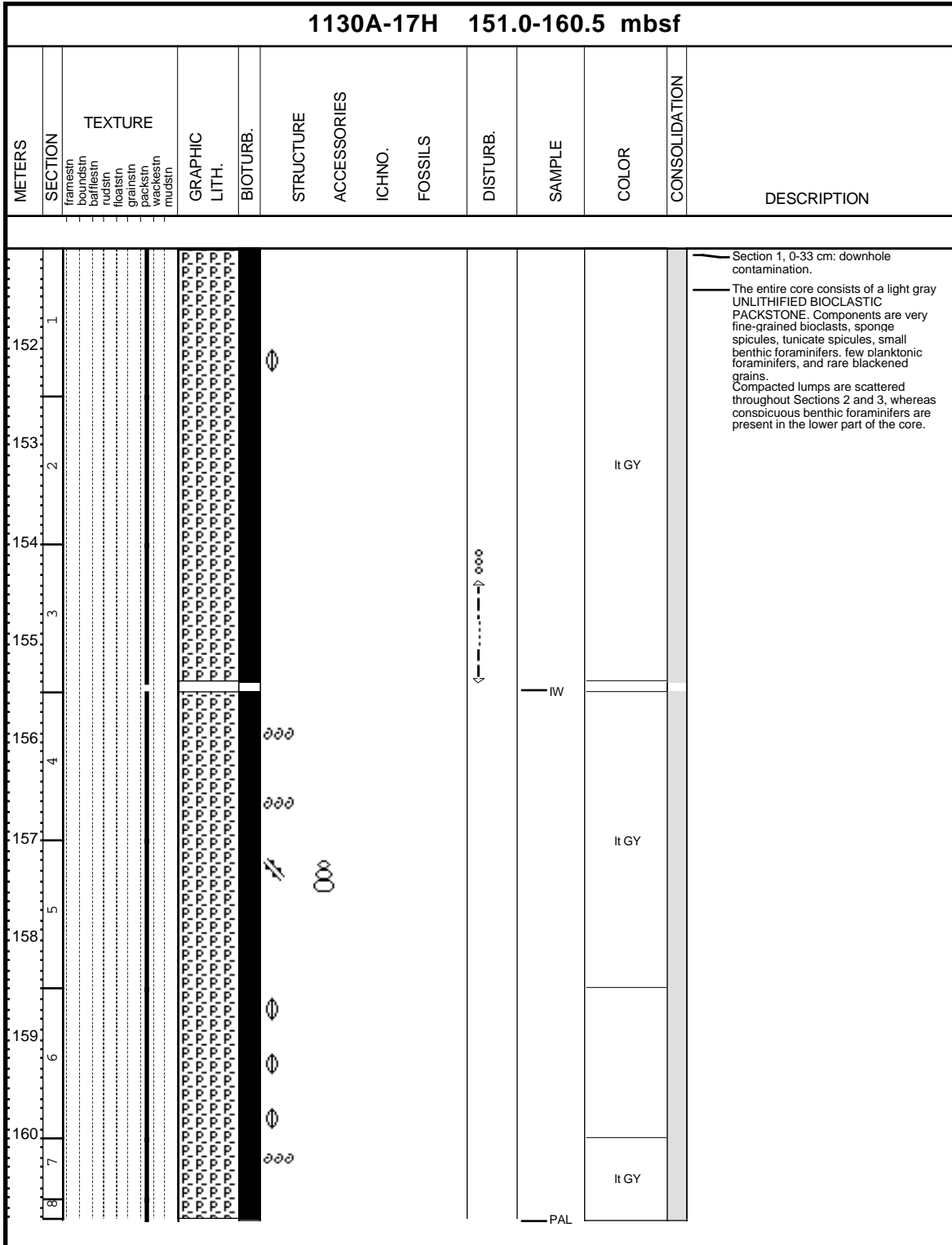
Core Photo



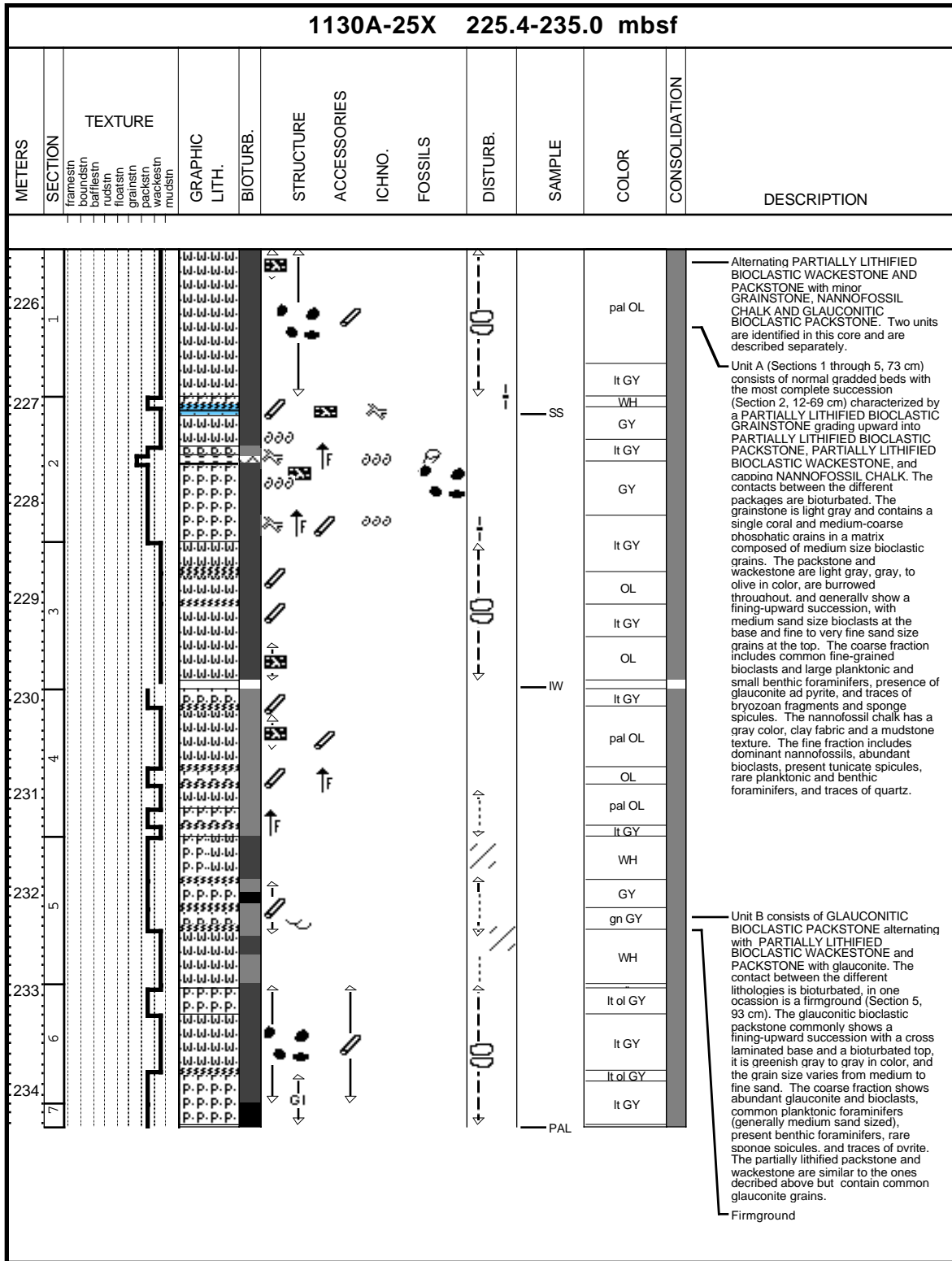
Core Photo



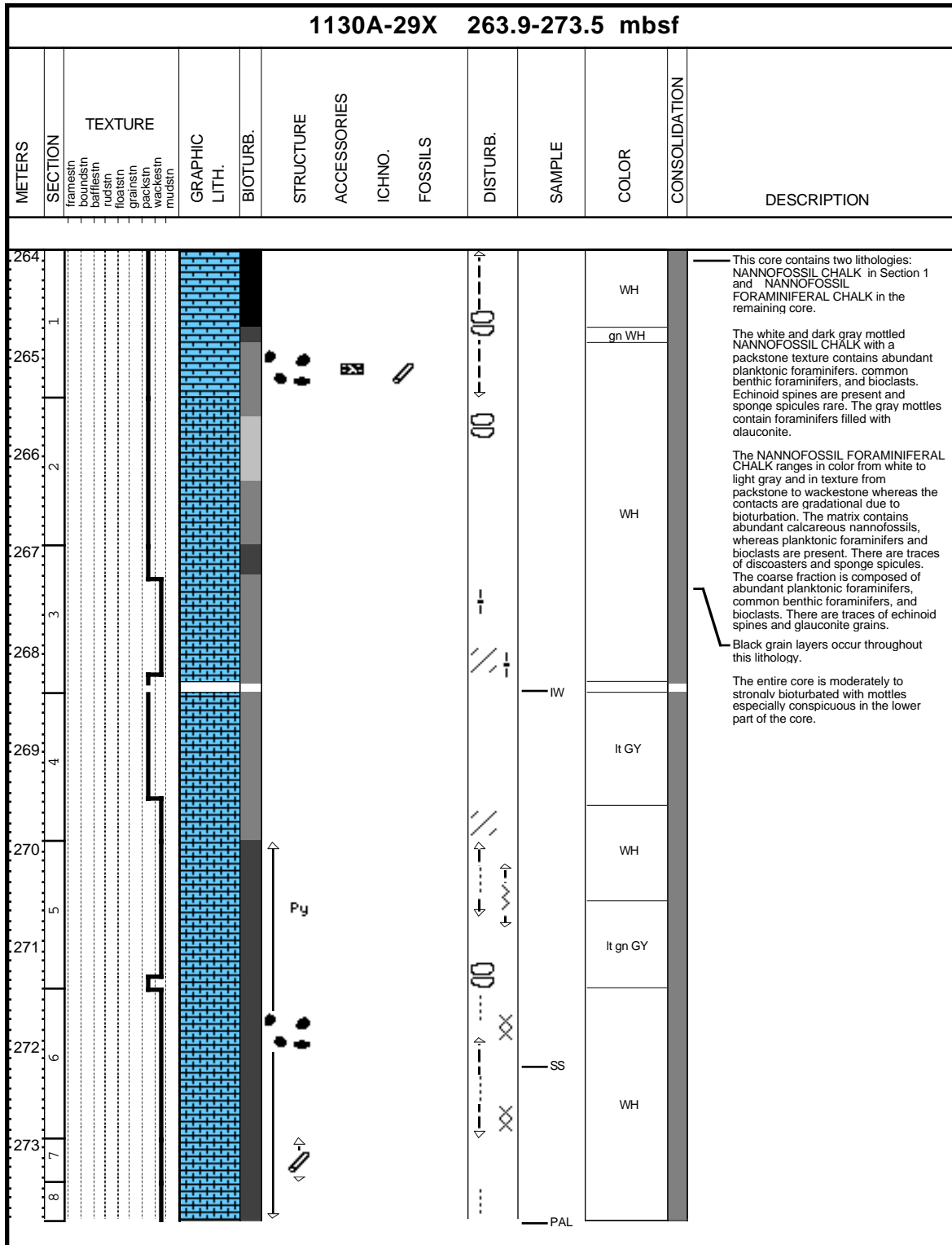
Core Photo



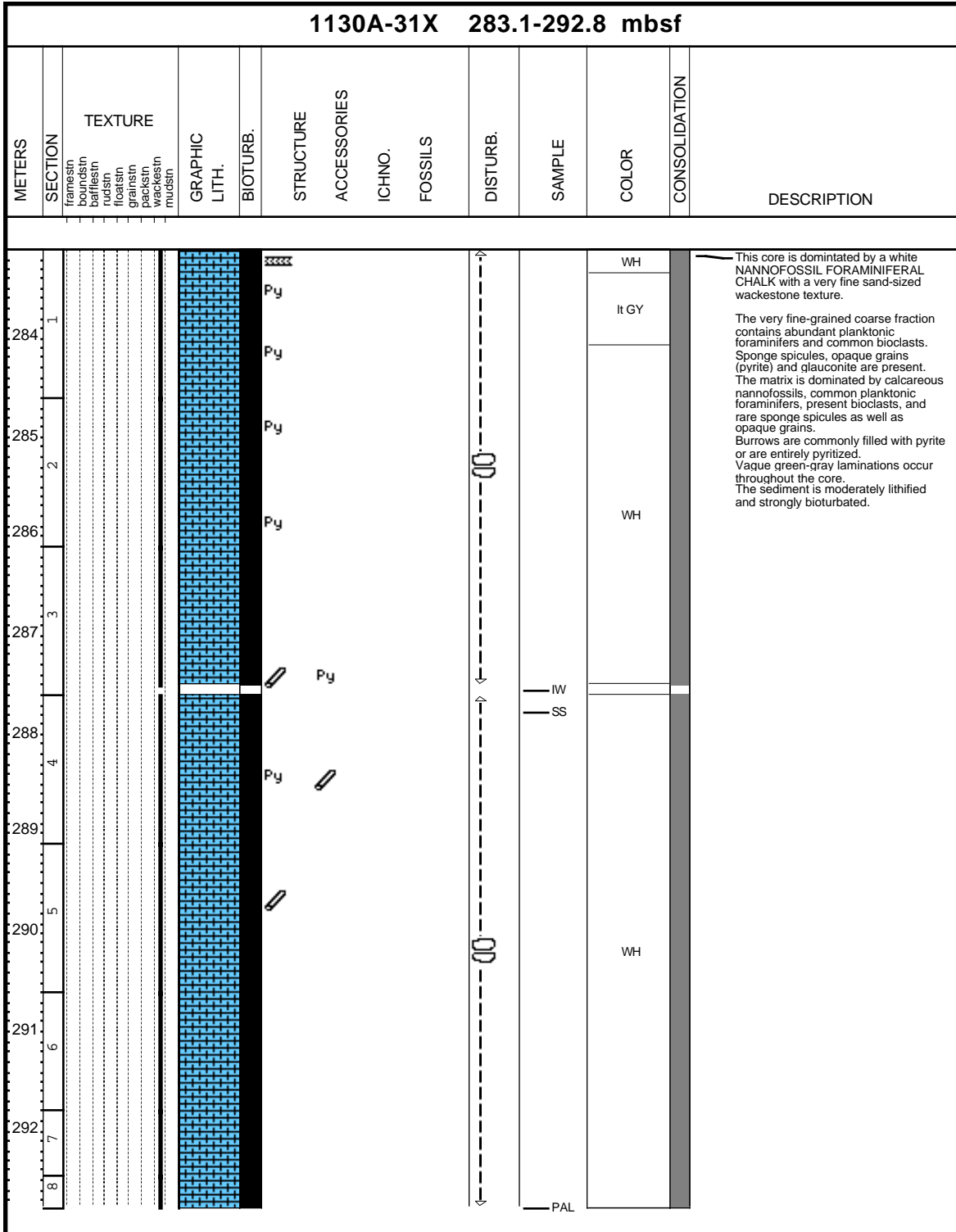
Core Photo



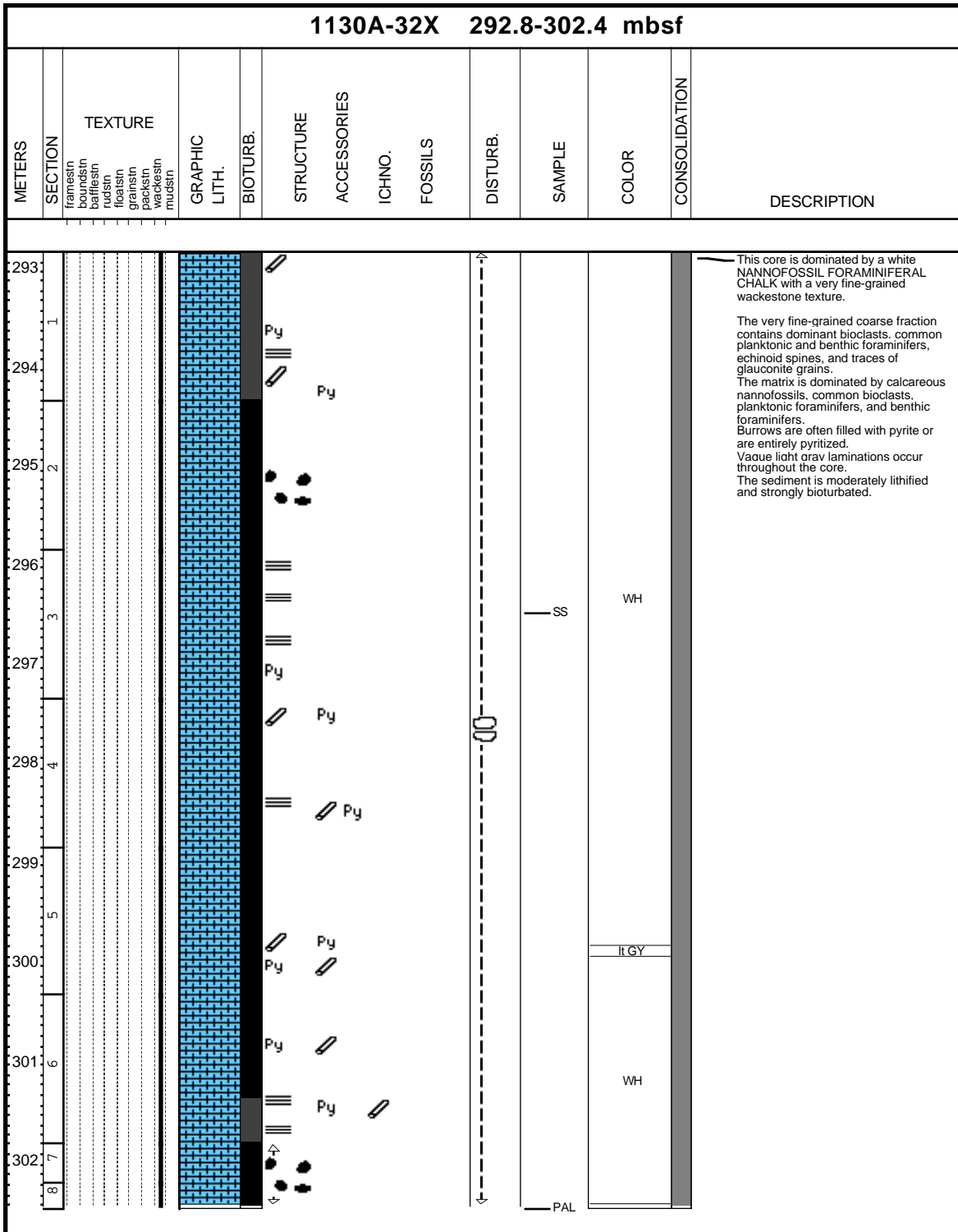
Core Photo



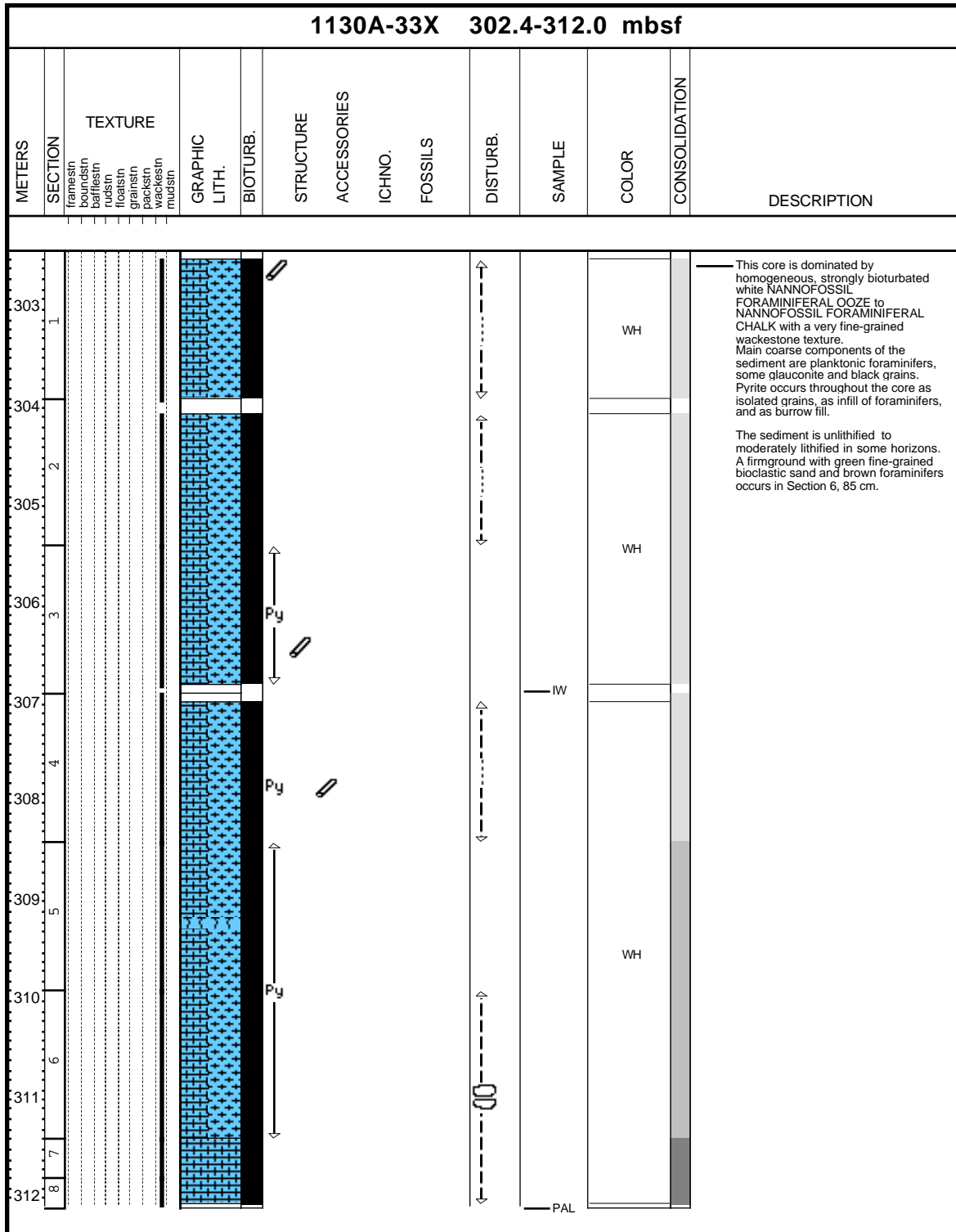
Core Photo



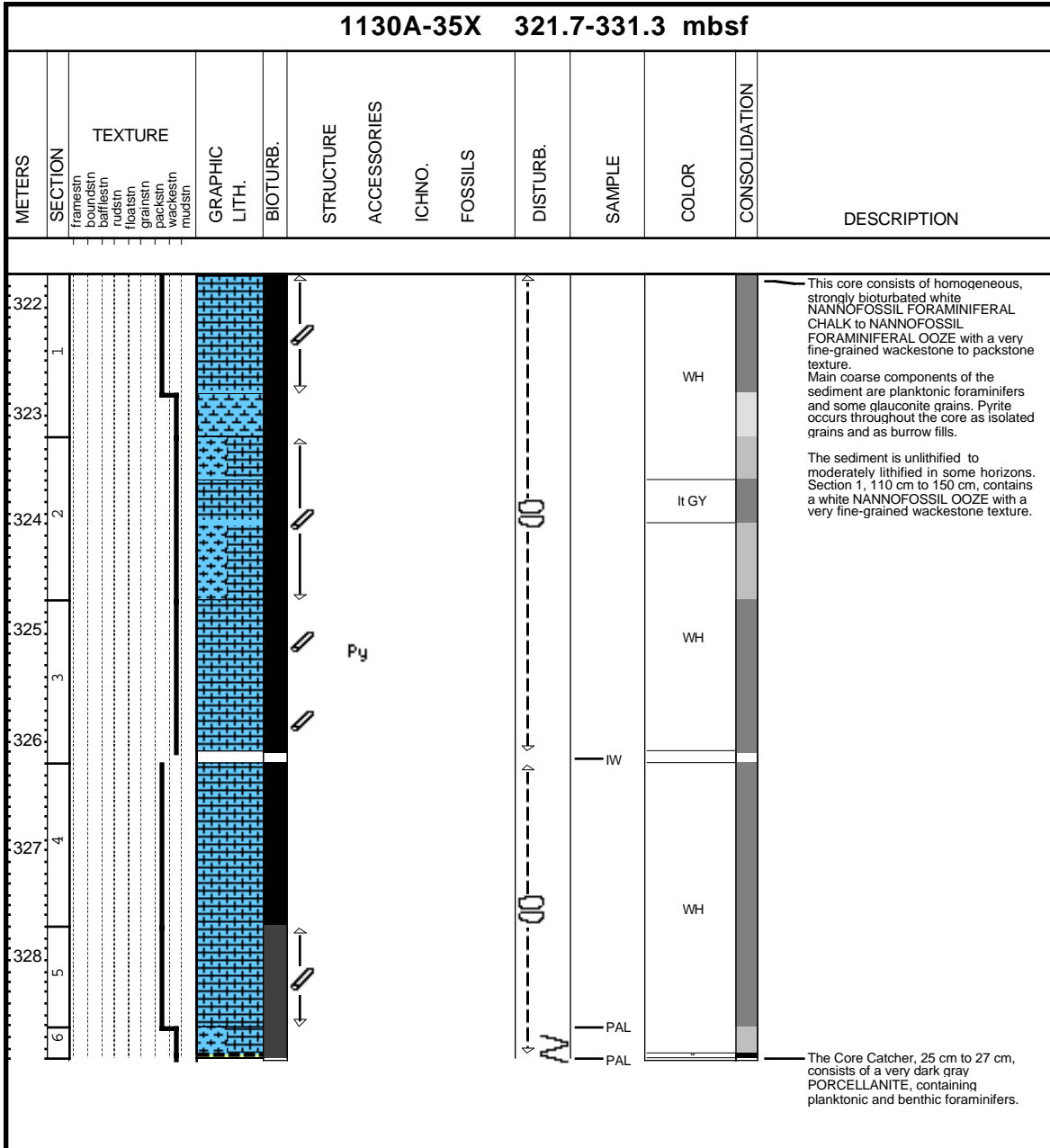
Core Photo




Core Photo




Core Photo



Core Photo


1130A-37X 340.9-350.4 mbsf													
METERS	SECTION	TEXTURE	GRAPHIC LITH.	BIOTURB.	STRUCTURE	ACCESSORIES	ICHNO.	FOSSILS	DISTURB.	SAMPLE	COLOR	CONSOLIDATION	DESCRIPTION
341	1	framsn bramsn brfflmsn rudsn foatsn grainsn packsn wackesn mudsn											<p>This core consists of very dark gray PORCELLANITE. Small mm-sized, irregular areas of chalk are partly replaced. This appears to be a planktonic foraminiferal grainstone with sponge spicules, somewhat neomorphosed, with a fine-grained wackestone-packstone texture.</p>

Core Photo

1130A-40X 369.5-379.1 mbsf													
METERS	SECTION	TEXTURE	GRAPHIC LITH.	BIOTURB.	STRUCTURE	ACCESSORIES	ICHNO.	FOSSILS	DISTURB.	SAMPLE	COLOR	CONSOLIDATION	DESCRIPTION
1													<p>This Core Catcher includes highly fragmented CALCAREOUS SANDSTONE fragments, consisting of bioclastic litharenite, coarse-grained sandstone with carbonate cement, and patches of bioclastic grainstone with isopachous cements.</p> <p>The bioclastic litharenite consists of fine- and very coarse-grained, subrounded brown-stained quartz grains and rock fragments with a bioclastic matrix and carbonate cement.</p> <p>The coarse-grained sandstone with carbonate cement includes fragments of miliolid foraminifers, serpulids, bivalves, and echinoderms.</p>

1130A-41X NO RECOVERY

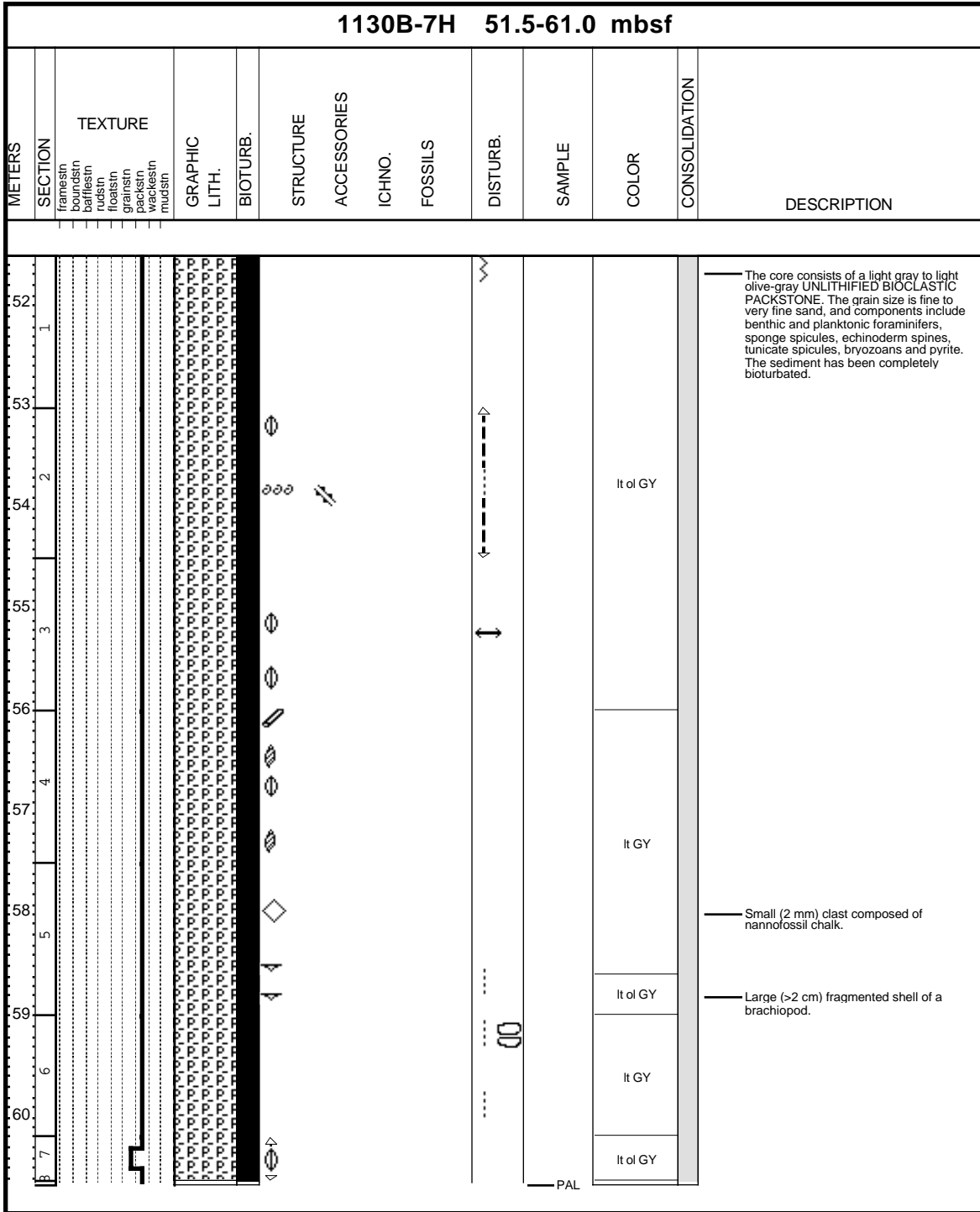
Core Photo

METERS		1130B-3H 13.5-23.0 mbsf										
SECTION	TEXTURE	GRAPHIC LITH.	BIOTURB.	STRUCTURE	ACCESSORIES	ICHNO.	FOSSILS	DISTURB.	SAMPLE	COLOR	CONSOLIDATION	DESCRIPTION
framesin boundsin bafflesin rudsin floatsin grainsin scalesin mudsln												
 <p>This Core Catcher consists of a light olive gray, fine-grained UNLITHIFIED BIOCLASTIC PACKSTONE.</p>												

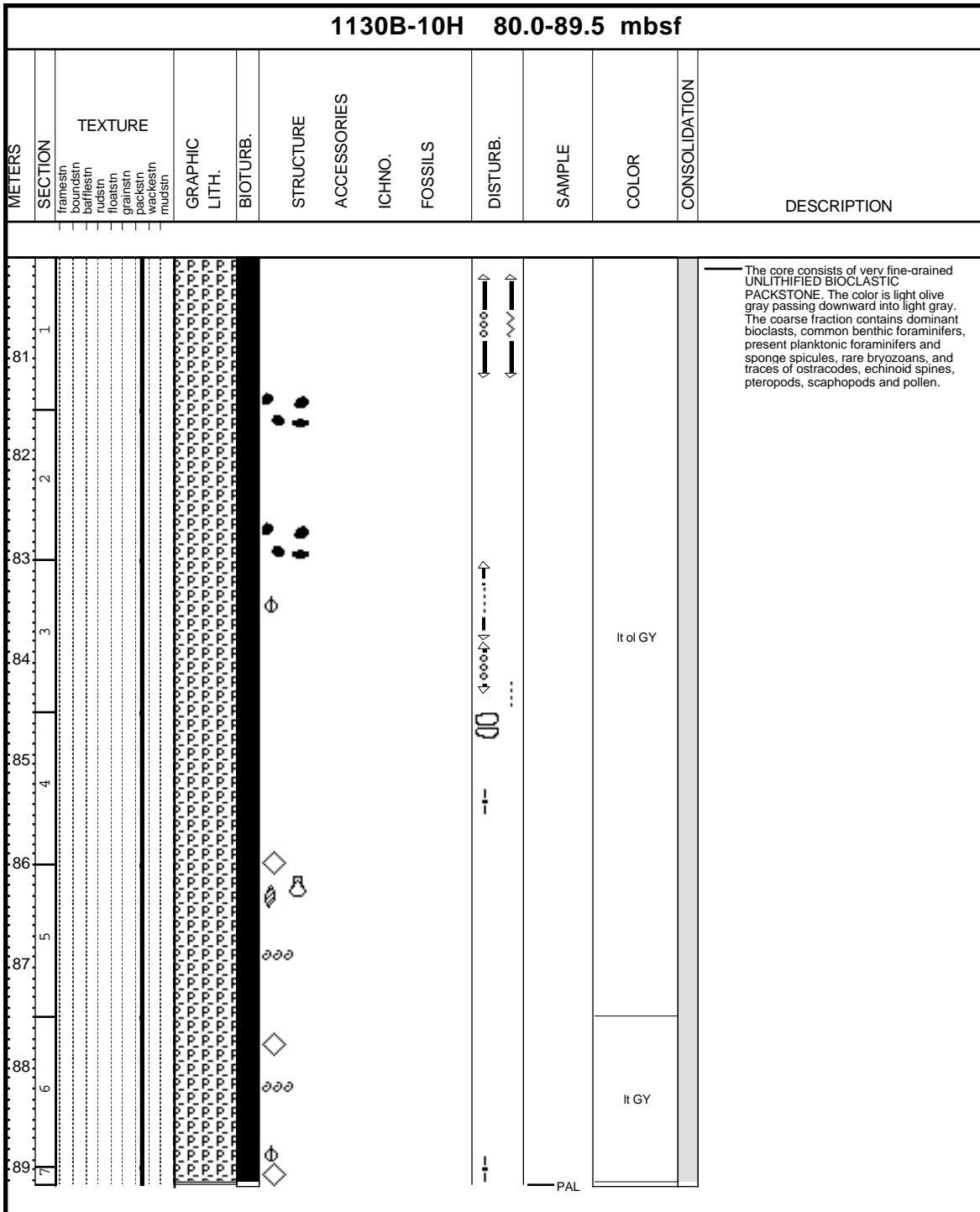
Core Photo

1130B-6H 42.0-51.5 mbsf														
METERS	SECTION	TEXTURE	GRAPHIC LITH.	BIOTURB.	STRUCTURE	ACCESSORIES	ICHNO.	FOSSILS	DISTURB.	SAMPLE	COLOR	CONSOLIDATION	DESCRIPTION	
43	1												<p>All of Core 6H is extremely disturbed. Core liner was destroyed, and the entire core was transferred section by section to new liner.</p> <p>Greenish gray, pale olive to pale yellow UNCONSOLIDATED BIOCLASTIC PACKSTONE.</p>	
44	2											gn GY		
45	3													
46														lt GY
47	4													
48	5													pal OL
49	6												pal YE	
										PAL				

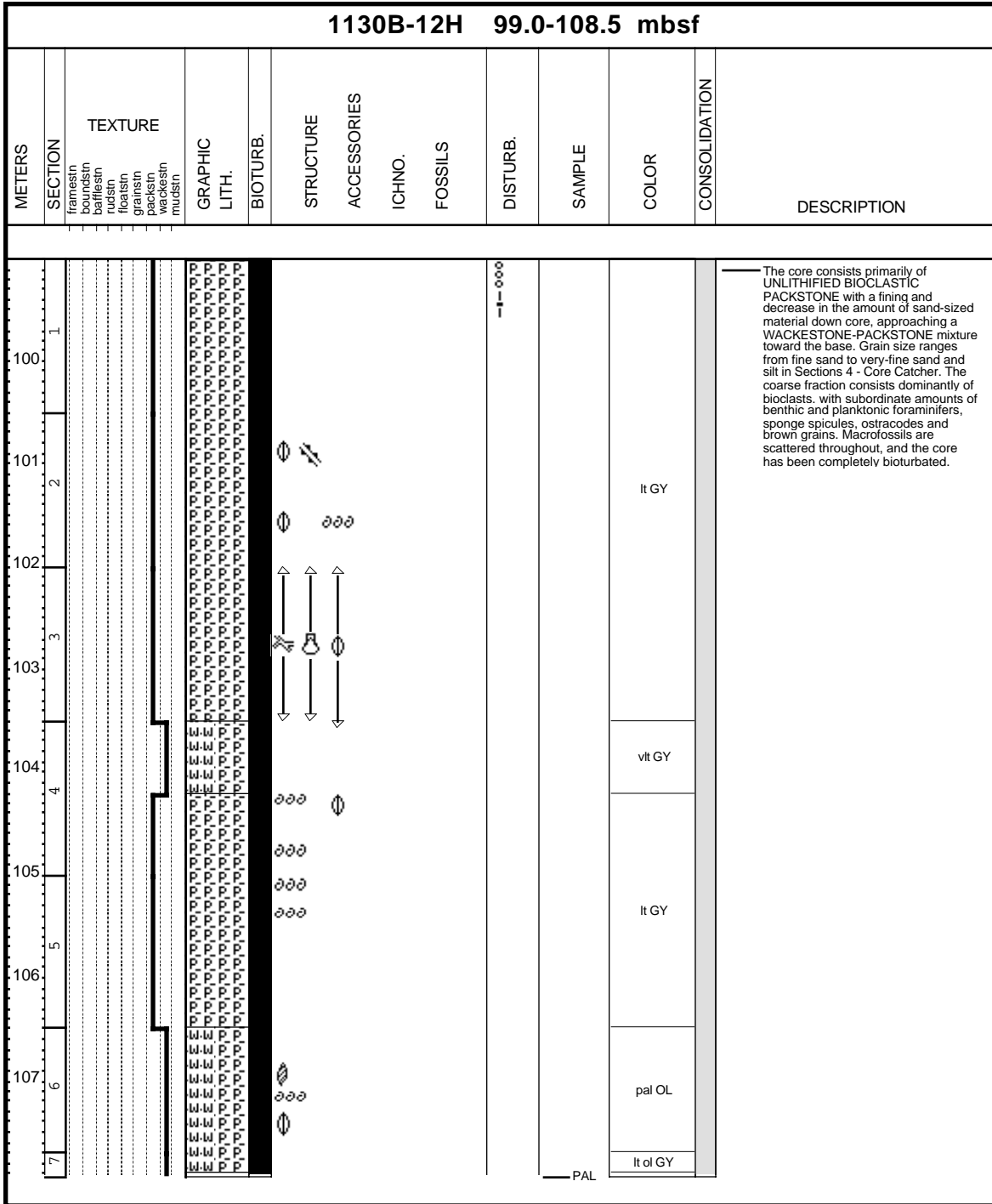
Core Photo



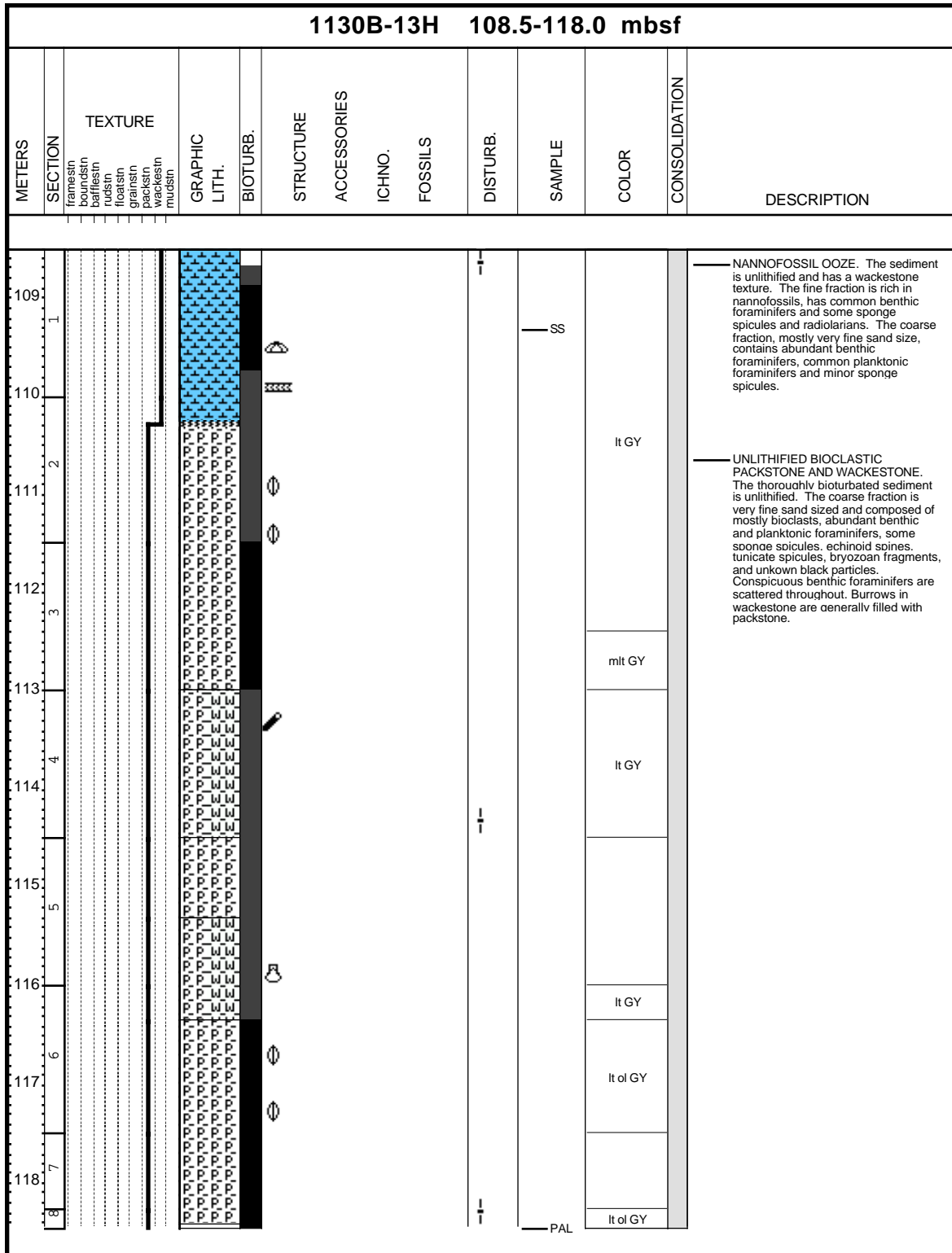
Core Photo



Core Photo



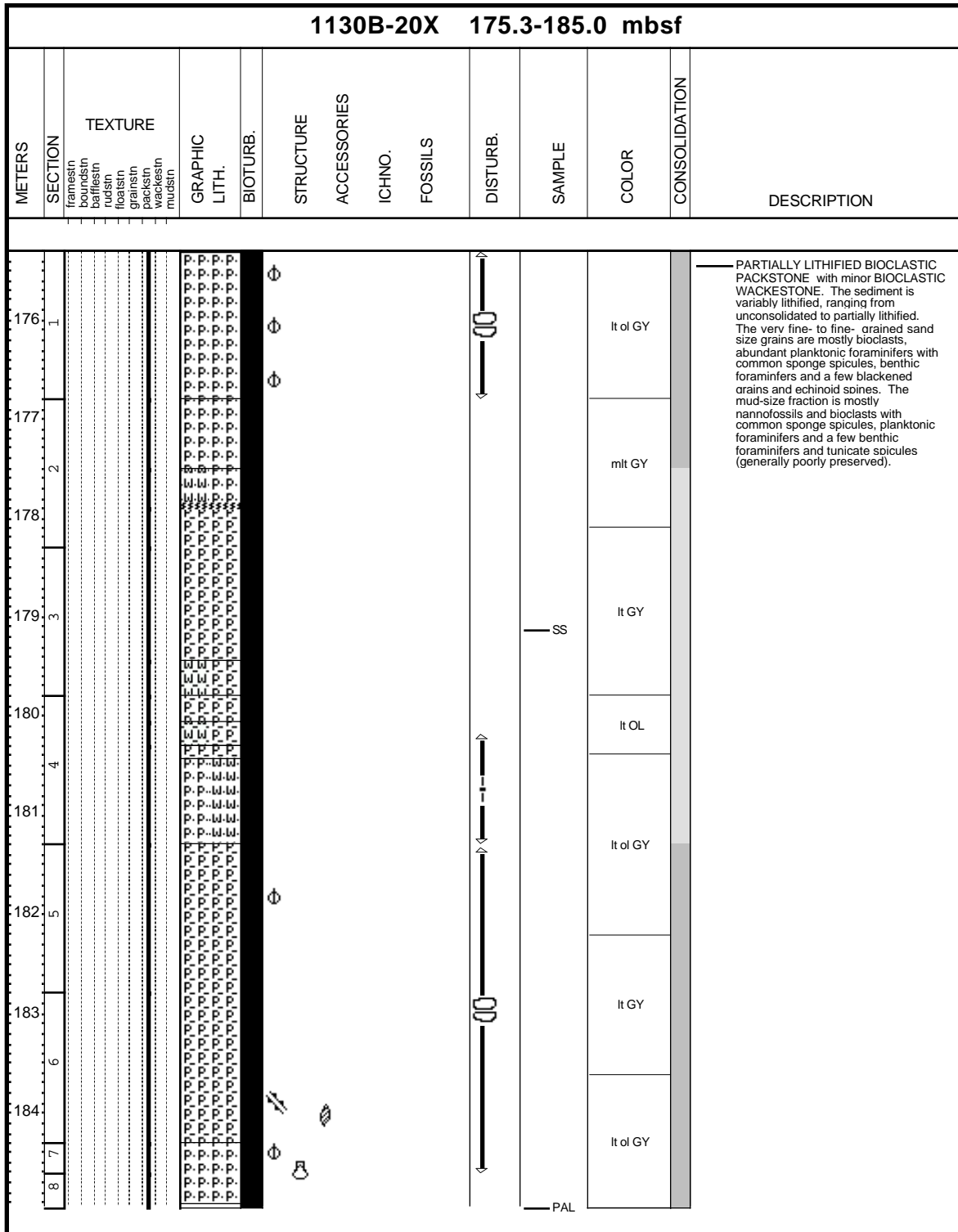
Core Photo



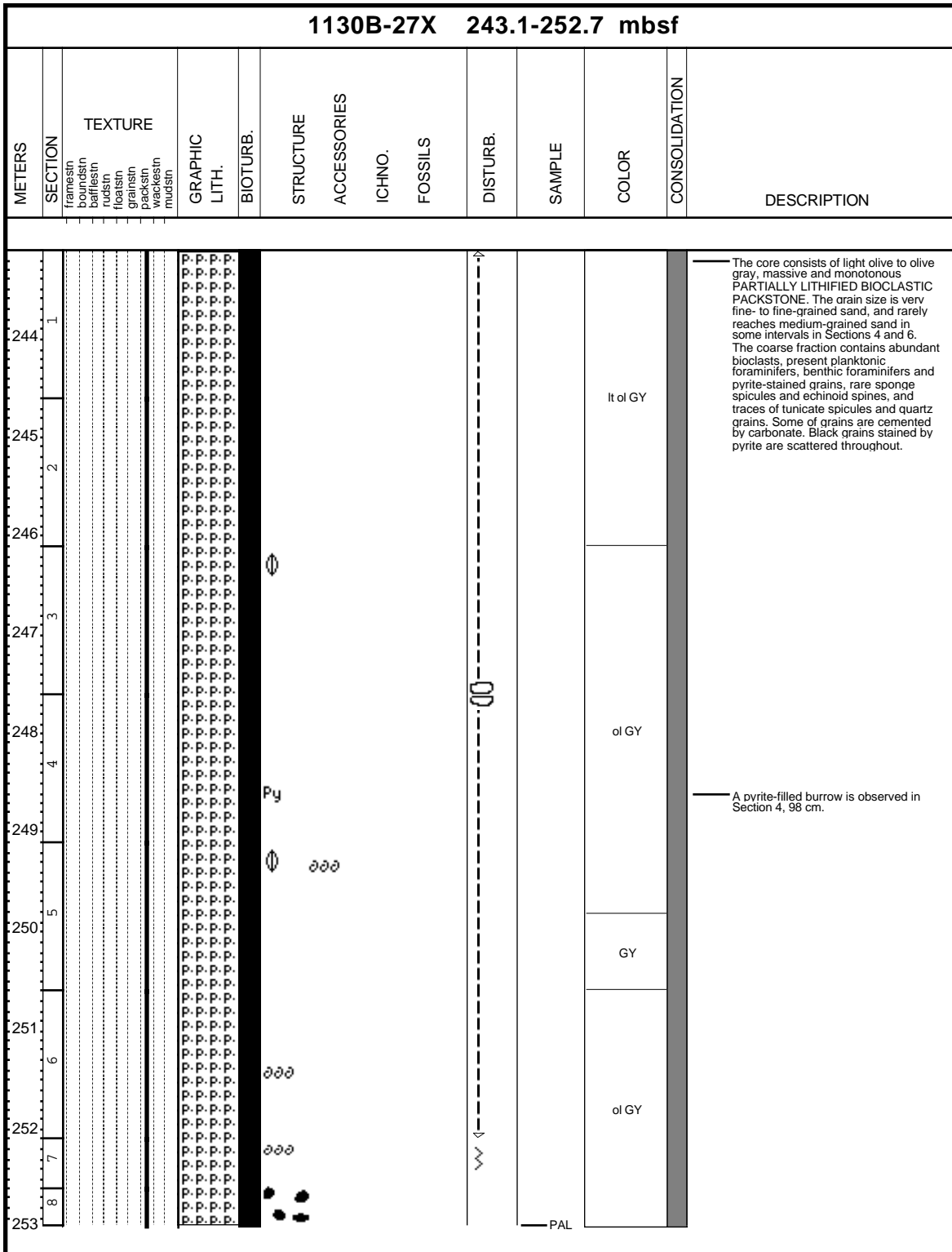
Core Photo

1130B-16H 137.0-146.5 mbsf													
METERS	SECTION	TEXTURE	GRAPHIC LITH.	BIOTURB.	STRUCTURE	ACCESSORIES	ICHNO.	FOSSILS	DISTURB.	SAMPLE	COLOR	CONSOLIDATION	DESCRIPTION
138.0	1										lt YE		<p>UNLITHIFIED BIOCLASTIC PACKSTONE with minor BIOCLASTIC WACKESTONE. This uniform, well-burrowed, unlithified, sediment has a coarse fraction of very fine to fine sand-size grains consisting of, in addition to bioclasts, abundant planktonic foraminifers, common sponge spicules and minor blackened grains, echinoid spines and lithoclasts. There are conspicuous miliolid benthic foraminifers scattered throughout.</p>
139.0	2										lt ol GY		
140.0	3										lt GY		
141.0	4										lt ol GY		
142.0	5										lt OL		
143.0	6										lt GY		
144.0	7										lt OL		
146.0	8										lt OL		

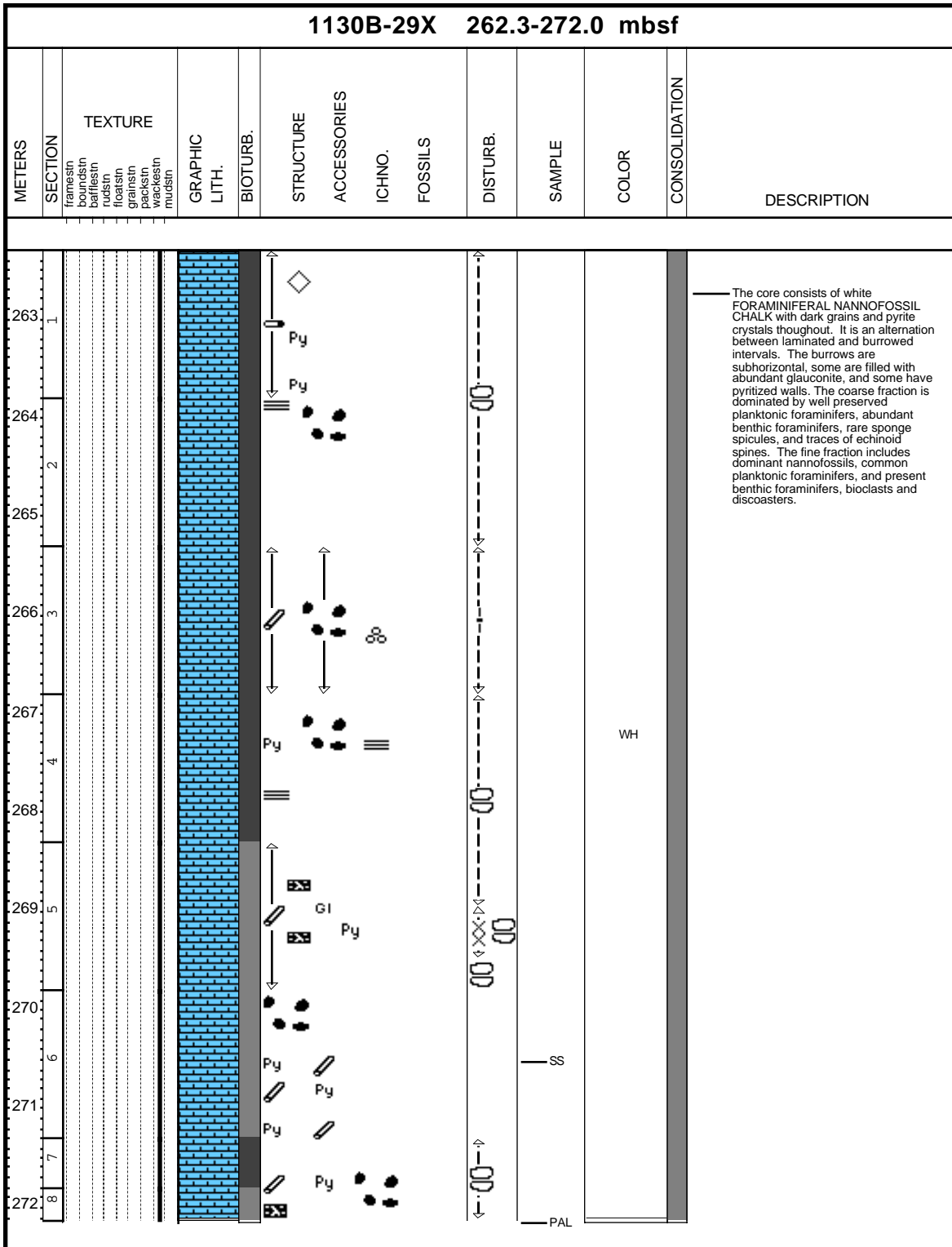
Core Photo



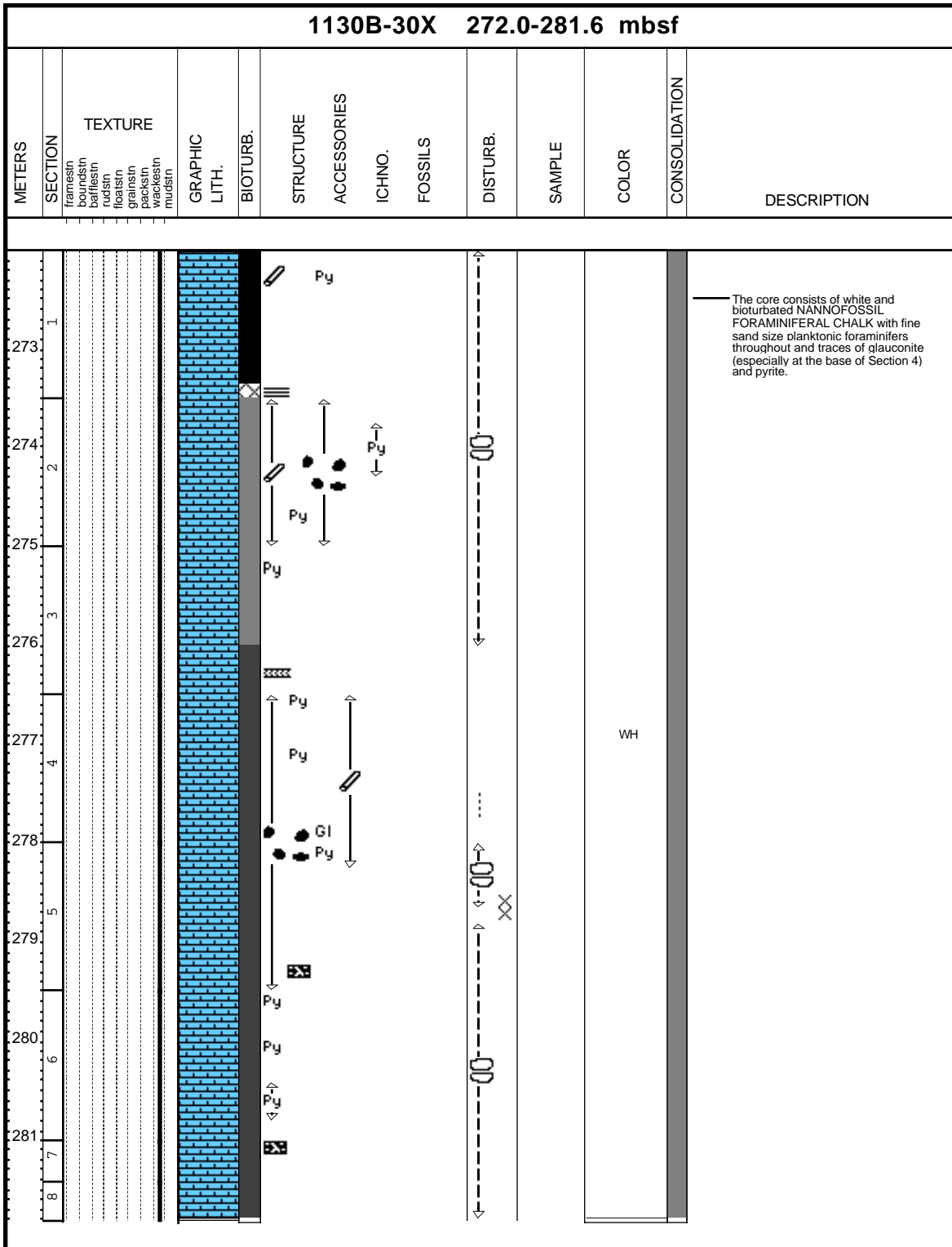
Core Photo



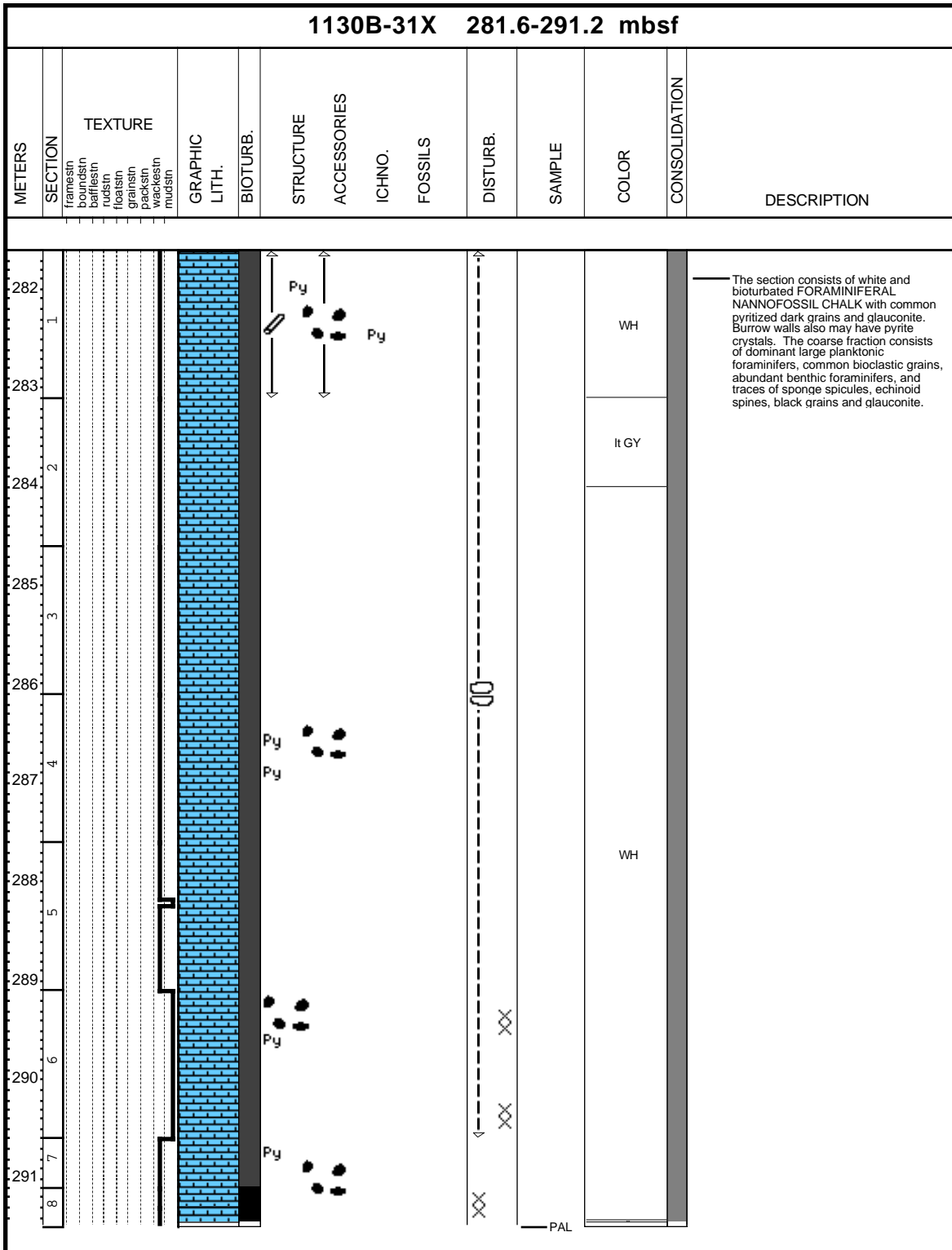
Core Photo



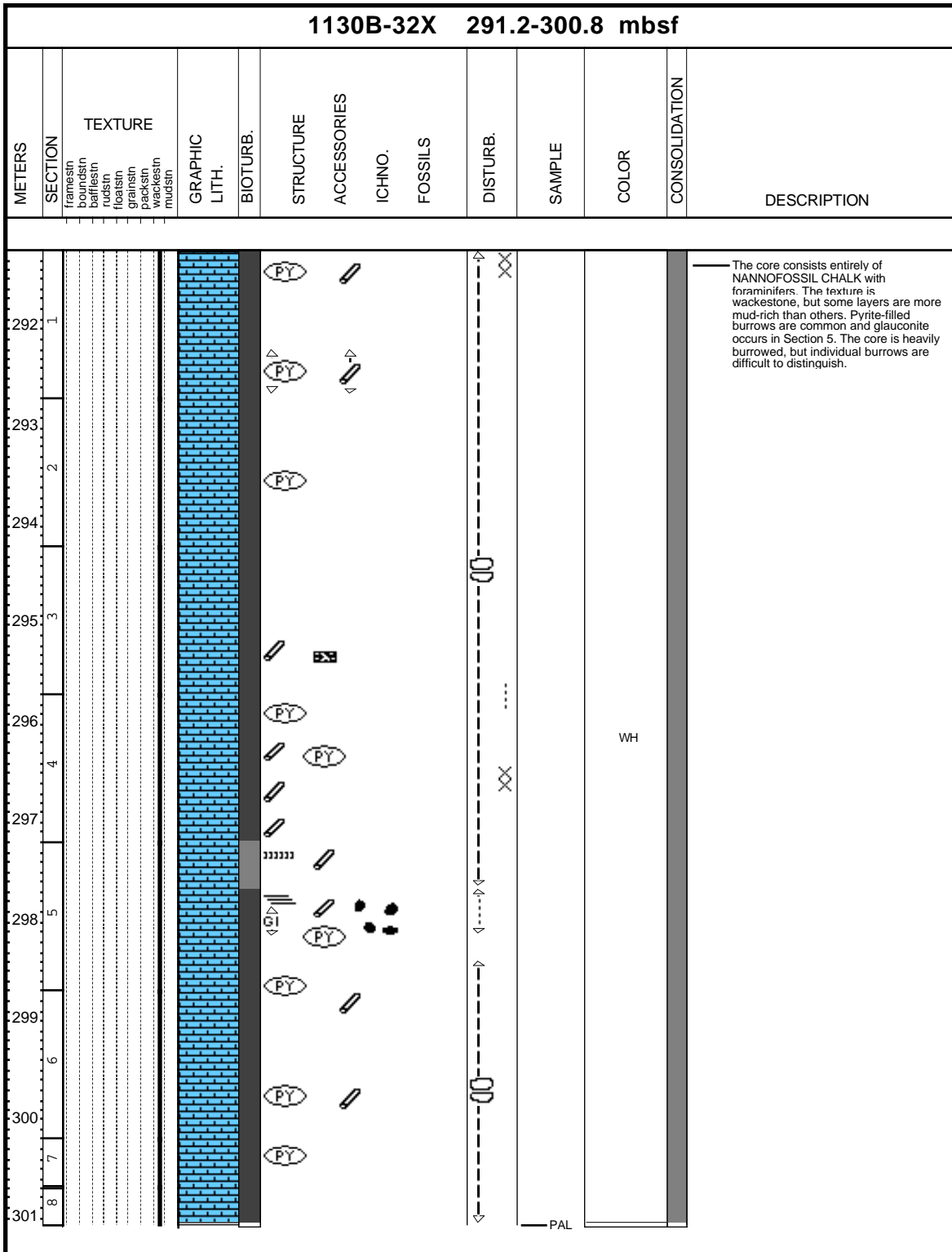
Core Photo



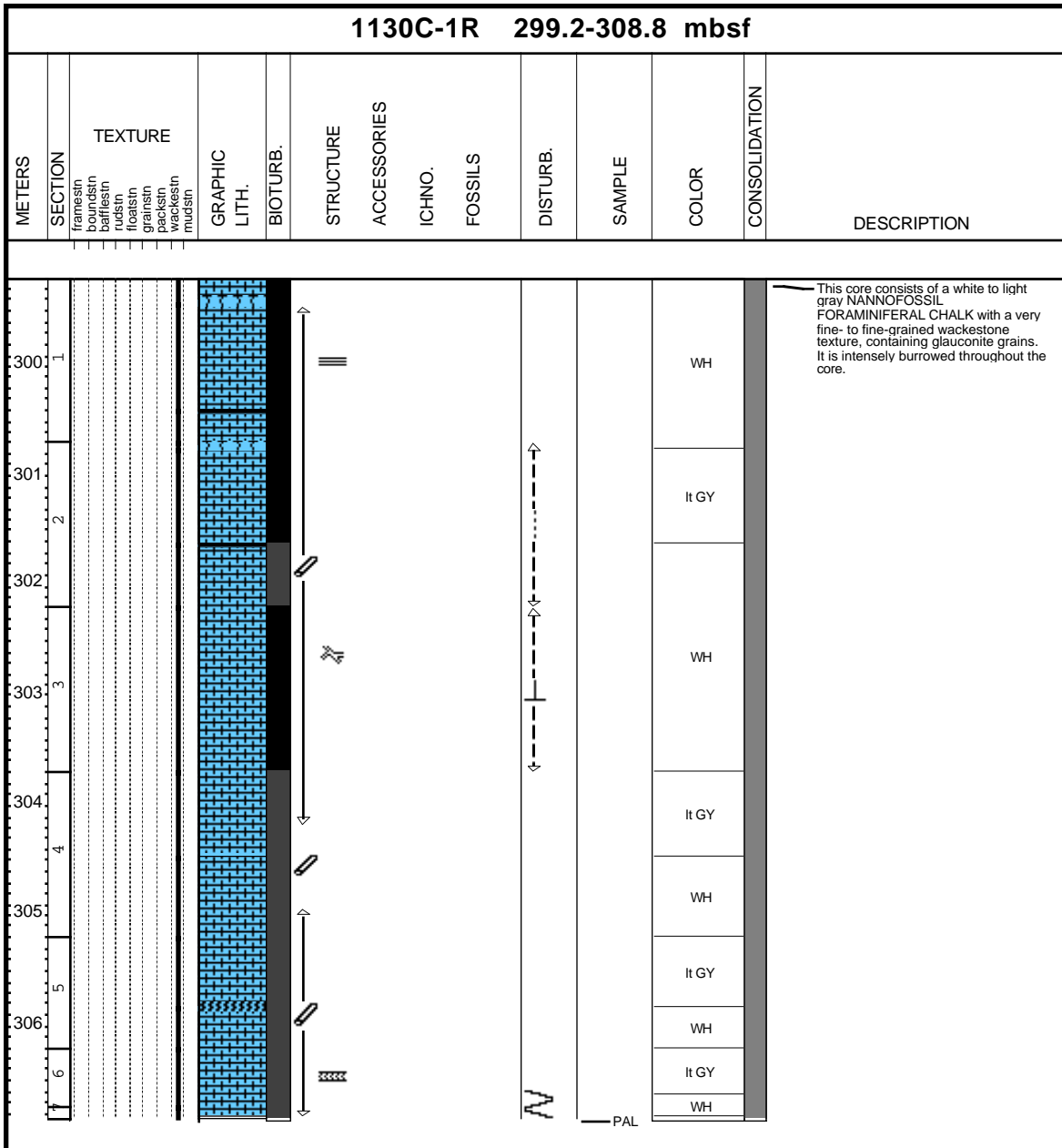
Core Photo



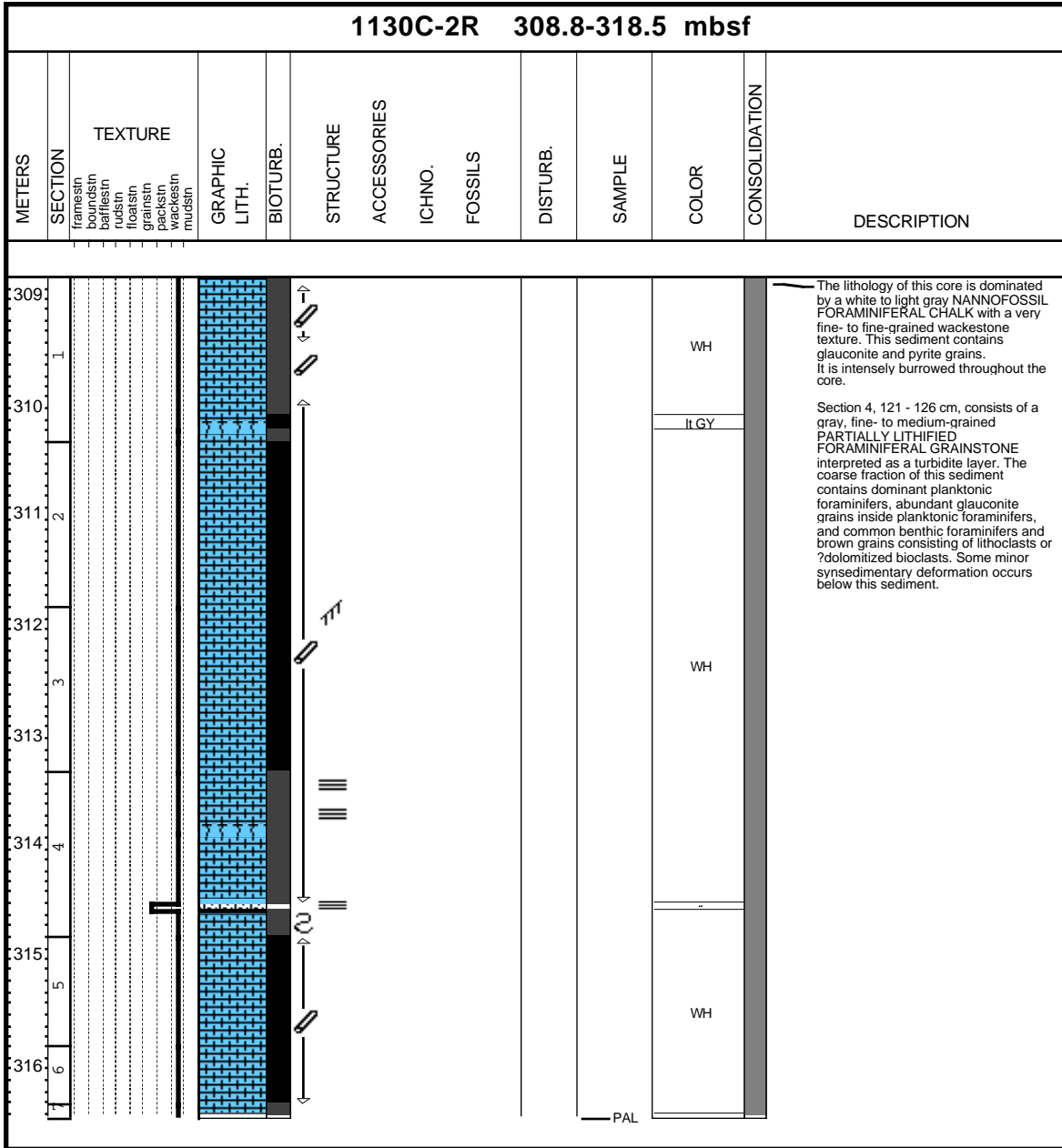
Core Photo



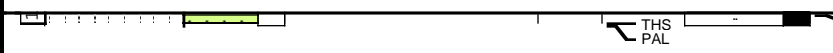
Core Photo



Core Photo



Core Photo

1130C-4R 328.1-337.7 mbsf1													
METERS	SECTION	TEXTURE	GRAPHIC LITH.	BIOTURB.	STRUCTURE	ACCESSORIES	ICHNO.	FOSSILS	DISTURB.	SAMPLE	COLOR	CONSOLIDATION	DESCRIPTION
	framesin boundsin barfliesin rudsin floatsin grainsin packsin wackesin mudsin												 <p>This core contains fragments of a dark gray PORCELLANITE. It is a silicified calcareous chalk with benthic and planktonic foraminifers, bioclasts, and sponge spicules.</p>


Core Photo

1130C-5R 337.7-347.4 mbsf																
METERS	SECTION	TEXTURE				GRAPHIC LITH.	BIOTURB.	STRUCTURE	ACCESSORIES	ICHNO.	FOSSILS	DISTURB.	SAMPLE	COLOR	CONSOLIDATION	DESCRIPTION
	framesin boundsin bafflesin rudsin floatsin grainsin scalesin mudsln															
																<p>The core contains fragments of dark gray PORCELLANITE. The fragments have vugs which are filled with white NANNOFOSSIL FORAMINIFER CHALK.</p>

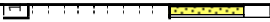

Core Photo

1130C-6R 347.4-356.9 mbsf													
METERS	SECTION	TEXTURE	GRAPHIC LITH.	BIOTURB.	STRUCTURE	ACCESSORIES	ICHO.	FOSSILS	DISTURB.	SAMPLE	COLOR	CONSOLIDATION	DESCRIPTION
1													<p>This core contains fragments of dark gray PORCELLANITE. The PORCELLANITE has vugs infilled with white pelagic limestone which contains planktonic foraminifers and blackened grains.</p>


Core Photo

1130C-7R 356.9-366.4 mbsf													
METERS	SECTION	TEXTURE	GRAPHIC LITH.	BIOTURB.	STRUCTURE	ACCESSORIES	ICHNO.	FOSSILS	DISTURB.	SAMPLE	COLOR	CONSOLIDATION	DESCRIPTION
357	fr mf bf rd fo gr pr mu												<p>This core contains fragments of a white and dark gray PORCELLANITE and pieces of a white NANNOFOSSIL FORAMINIFERAL OOZE. The PORCELLANITE probably is a silicified planktonic foraminiferal ooze or chalk. The NANNOFOSSIL FORAMINIFERAL OOZE contains extremely small planktonic foraminifers (silt to very fine sand-sized).</p>

Core Photo

1130C-9R 376.0-385.6 mbsf													
METERS	SECTION	TEXTURE	GRAPHIC LITH.	BIOTURB.	STRUCTURE	ACCESSORIES	ICHNO.	FOSSILS	DISTURB.	SAMPLE	COLOR	CONSOLIDATION	DESCRIPTION
	fractnsn formsn buffnsn rustnsn floatsn grainnsn packetsn wackesnsn mudsn												  <p>This core contains fragments of a grayish-red CALCAREOUS SANDSTONE. The components are coarse sand-sized subangular to subrounded quartz grains. Other components are lithic fragments, some opaque minerals, and minor bioclasts. The cement is a carbonate isopachous rim cement.</p>

Core Photo

1130C-10R 385.6-395.2 mbsf											
METERS	SECTION	TEXTURE	GRAPHIC LITH.	BIOTURB.	STRUCTURE	ACCESSORIES	ICHNO.	FOSSILS	DISTURB.	SAMPLE	DESCRIPTION
386.1	framesn foramsn buffsn rudsn floatsn grainsn packsn wackesn mudsn										<p>Section 1, 2-7 cm, 15-40 cm, and 50-91 cm consist of a CALCAREOUS SANDSTONE. Grains are quartz, bryozoans, lithic fragments, and bioclasts. The siliciclastic components are coarse-grained, subangular to rounded, moderately to well-sorted, and cemented by calcite.</p> <p>Section 1, 7-15 cm, contains a BIVALVE GRAINSTONE with fragments of bivalves (Pecten), delicate branching bryozoans, seroulids, and quartz grains.</p> <p>Section 1, 40-50 cm contains a very coarse-grained BRYOZOAN GRAINSTONE with delicate branching and fenestrate brvozoans, quartz grains, bioclasts, gastropods, bivalves, echinoderms, and opaque grains.</p>

Sample		Texture		Mineral										Biogenic										Rock		Comments										
Leg	Site	Hole	Core	Type	Section	Top (cm)	Depth (mbsf)	Lithology	Sand	Silt	Clay	Biotite	Clay	Dolomite	Fe Oxide	Feldspar	Glauconite	Opauques	Phosphorite	Pyrite	Quartz	Benthic Foraminifers	Bryozoans	Coccolith	Diatoms		Discoaster	Echinoid Spine	Ostracodes	Planktonic Foraminifers	Radiolarians	Sponge Spicules	Tunicate Spines	Bioclasts	Lithoclasts	
182	1130	A	1	H	2	80.00	2.30	D	D			R	C			R	*	*			C	C	R	C	*	P		P	P	P	P	P	P		Rare - worm tubes	
182	1130	A	1	H	5	100.00	7.00	D	D				P								P	P	P	C		P		R	C	C	P	A		Rare - worm tubes; many bioclasts are bored		
182	1130	A	4	H	4	60.00	32.60	D													R	R	A			P		C	C	C	C	C				
182	1130	A	5	H	2	90.00	39.40	D													R	C	*	A	R		P		P	C	C	C	C		Rare - worm tubes	
182	1130	A	5	H	4	90.00	42.40	D													R	C	P	A			P		C	C	C	C	A			
182	1130	A	6	H	2	70.00	48.70	D														A	A	A				R	A	P	A	A	D			
182	1130	A	7	H	2	100.00	58.50	D	D	A												R	A	A				R		P	P	P	D			
182	1130	A	7	H	6	120.00	64.70	D	C	D	C									*			A	A		*		P	R	C	P	D				
182	1130	A	8	H	2	82.00	67.82	D						*								A	C	*			P		C	P	A				Rare - rot-shaped grain; many brownish grains	
182	1130	A	8	H	5	70.00	72.20	D												R		C	A	A					C	P	A					
182	1130	A	9	H	2	40.00	76.90	D														P	A	A	*				P	C	P	D				
182	1130	A	9	H	3	74.00	78.74	D														C	A	A			P		P	C	C	C				
182	1130	A	10	H	2	140.00	87.40	D												*		R	D	D				R	*	P	P	A				
182	1130	A	11	H	2	75.00	96.25	D														P		D	D				P	A	P	A				
182	1130	A	11	H	3	120.00	98.20	D															D	D												
182	1130	A	11	H	4	100.00	99.50	D														A	A	A			P	*	P	*	C	C	A			
182	1130	A	11	H	5	80.00	100.80	D														R	C	A	A		*	R	*	C	P	D				
182	1130	A	12	H	2	70.00	105.70	D						R								C	C	C			*	P	P	C	C	A				
182	1130	A	12	H	5	126.00	110.76	M														R	D	D				P		P	A	P				
182	1130	A	12	H	7	26.00	112.76	D														A	A	A					*	P	*	D				
182	1130	A	14	H	7	40.00	131.90	D														P	D	D			P		C	A	P	C				
182	1130	A	15	H	4	10.00	136.60	D														P	A	A			R	C	C	C	A					
182	1130	A	16	H	4	68.00	145.66	D								*				R		P	C	A			R	C	C	P	D			Rare - tube worms		
182	1130	A	16	H	6	60.00	148.58	D														C	A	*		*	C	C	A	C	A					
182	1130	A	18	H	4	70.00	165.70	D														P	D	*			C	C	C	A						
182	1130	A	19	X	4	107.00	175.57	D													R	P	A	*		P		C	P	P	D					
182	1130	A	20	X	4	84.00	182.74	D				R										C	A	*		P		P	C	C	A				Rare - scaphopods	
182	1130	A	22	X	4	140.00	202.50	D												*		P	A				C	A	C	A						
182	1130	A	23	X	3	135.00	210.55	D														C	D	D				P		P	C	A				
182	1130	A	23	X	6	140.00	215.10	D														A	D	D					C	*	A					
182	1130	A	24	X	1	43.00	216.23	D	C	A	D			*								R	D	D				P		C	R	C				
182	1130	A	24	X	4	40.00	220.70	D						R								A	A	*				P	R	C	P	A				
182	1130	A	25	X	2	22.00	227.12	D	P	D	A											R	D	D				R		P	P	A				
182	1130	A	26	X	2	80.00	237.30	D														A	A	A			*	R		P	A					
182	1130	A	27	X	3	40.00	248.00	D						*								P	D	D			*	R	*	C	P	A				
182	1130	A	27	X	3	105.00	248.65	D														P	D	D				R		P	R	A				
182	1130	A	28	X	3	120.00	258.50	D															D	D		*		R		R		P				
182	1130	A	28	X	6	50.00	262.30	D														R	D	D		R		R		R						
182	1130	A	29	X	6	73.00	272.13	D	P	P	D											R	D	D		*		P		*				P		
182	1130	A	31	X	4	17.00	287.77	D													R		D	D				C	R							
182	1130	A	32	X	3	63.00	296.43	D														C	D	D		C		C		C						
182	1130	B	8	H	6	66.00	69.16	D														P	D	R						C	A					
182	1130	B	13	H	1	80.00	109.30	D			D											C	A	A				*	P	C	C					
182	1130	B	17	H	1	70.00	147.20	D														C	D	D		R		C	C	C	A					
182	1130	B	18	X	1	71.00	156.71	D						*								R	A	A				C	C	C	P	D				
182	1130	B	20	X	3	76.00	179.06	D													*	P	A	A			R	C	C	P	A				Rare-rim cement	
182	1130	B	26	X	6	99.00	241.99	D														P	A	A				P		P						
182	1130	B	26	X	6	106.00	242.06	M														R	D	D				R		R						
182	1130	B	28	X	7	30.00	262.00	D															D	D		*		*							*	
182	1130	B	29	X	6	70.00	270.50	D														P	D	D				P								
182	1130	C	7	R	CC	17.00	357.07	M			D											R	D	D				C		R						

